



TEREX

1804 LCI

Material Handler

OPERATING WEIGHT	77,200 - 90,500 lbs (41,000 - 43,100 kg)
NET ENGINE POWER	228 hp (170 kW)
MAX REACH	54' 4" (16.5 m)



Specifications

Engine

Manufacturer / Model	Deutz / BF6M 1013 ECP
Charging	Turbocharger / intercooler
Engine output (acc. to ISO 1585)	228 hp (170 kW)
Displacement	436 in ³ (7.14 L)
Maximum rpm	1,900 min ⁻¹

Hydraulic System

Computer controlled AWE4 system with two load limit controlled high performance piston pumps and fuel saving oil supply on demand in order to ensure sensitive, proportional and load independent control of all movements. Primary and secondary safeguarding of the hydraulic system against overload. Anti-cavitation valves for all working functions, throttle control in the lifting and folding circuit.

Hydraulic system	2 x axial piston pumps
Main pump	HPR 160/160
Maximum gear pump output	2 x 85 gpm (322 L/min)
Max. operating pressure	4,641/5,551 psi (320/380 bar)

Noise Level

Outside cab (LwA)	104 dBA
Inside cab (LpA)	75 dBA
Dynamic noise measurements acc. 2000 / 14 EU regulations, well below EU limits.	

Electrical System

Operating voltage	24 Volt
Cold-start high performance batteries	2 x 143 Ah

Operation

Servo-supported maintenance free two lever cross controls with especially fine tuning (SAE recommendation). Manual control for forward, backward, and curve drive as well as counter rotating of tracks. Foot pedals for forward and backward drive. Driving via foot operated rocker pedal (conforming to ISO pattern) available optionally.

Fluid Capacities

Fuel tank	112 gal (423.8 L)
Hydraulic tank	133 gal (503.4 L)
Engine oil tank	6 gal (22.7 L)

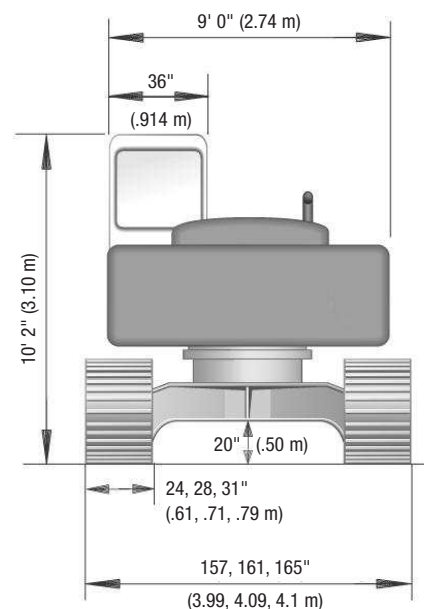
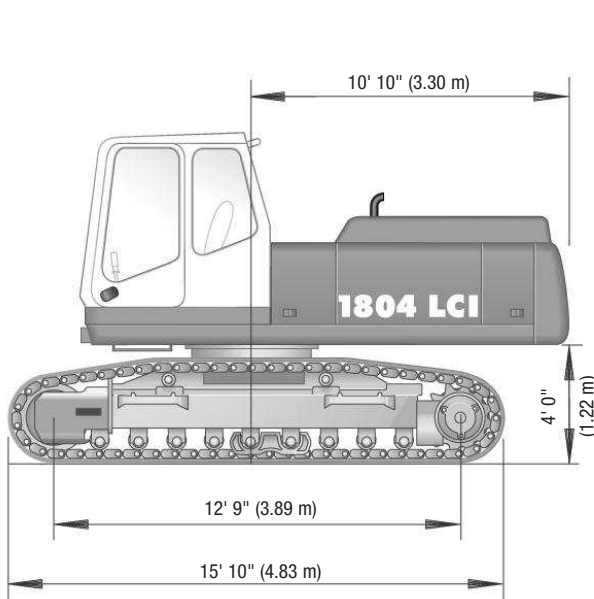
MATERIAL HANDLER
1804 LCI

Specifications

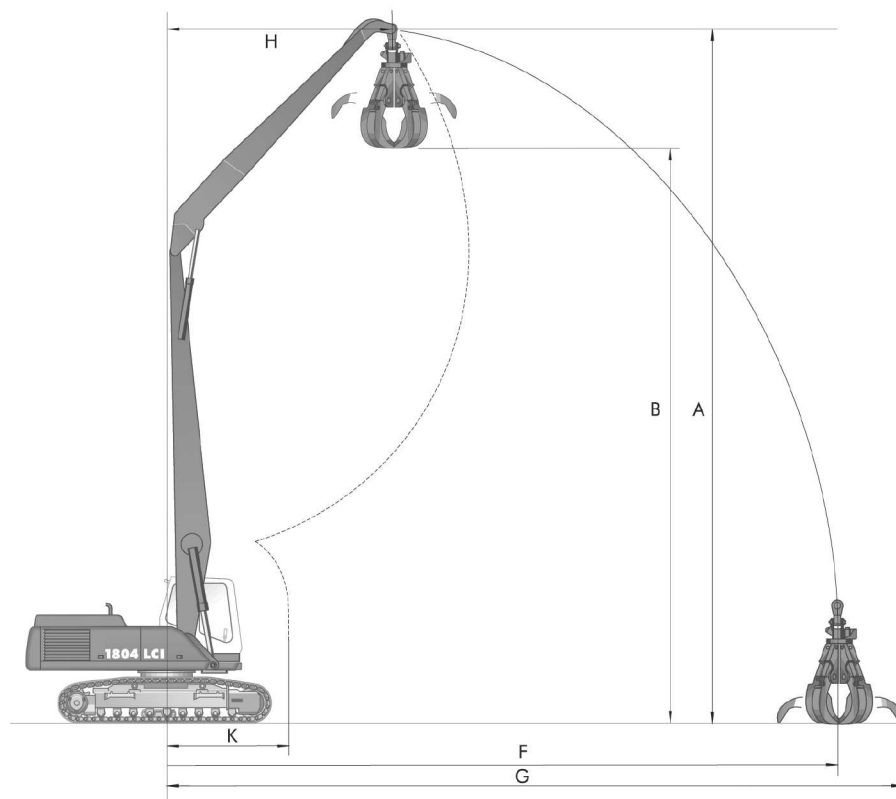
Cab	
Shock absorbing resilient mountings • Heat insulated panoramic windows for best all around visibility • No glare interior • Skylight with window • Air conditioning • Ergonomic control levers • Adjustable steering column • Forward and reverse seat adjustment, independent of the control panel • Up and over windscreen lockable under roof panel	
Swing Mechanism	
Swing mechanism with dual-drive	
Swing motor	Axial piston with priority valve
Swing gear box	Planetary gearing
Swing brake*	Lockable multi-disc
Drive internally toothed	
Swing speed	8.5 min ⁻¹
Swing torque	68,900 lb•ft (93.4 kNm)
*Straight forward swing operations while on grades due to foot locking pedal brake, if swing pressure exceeds 1,740 psi (120 bar).	
Drive	
Individual drive of each chassis side via a swashplate hydraulic motor • Planetary gear • Automatic acting multi-disc-brake (holding brake) • Double-acting travel brake valve • Compact drive unit located in protected position inside the chassis frame • Dual speed drive motors. • Automatic change of the travelling speed stages in case drive resistance increases	

Traveling Speed	
Low	0 - 1.8 mph (0 - 2.9 km/h)
High	0 - 2.8 mph (0 - 4.51 km/h)
Undercarriage	
Tracked undercarriage • High ground clearance • X-shape • Heavy tractor type crawler tracks of special design • Lifetime lubricated carrier and track rollers • Asymmetrical roof-profile open to the bottom • Protected against retention of material on upper chassis frames and the three-rib track plates • Lubricated tracks • Sealed bolts • Smooth ride-quality • D6C crawler gear parts • Track tensioning by hydraulic grease ram and a pre-loaded steel spring • Track guides at the front and the middle of the lateral frame and dirt rejector at the rear • Optional 2' 4" (711 mm) and 2' 7" (787 mm) wide grousers	
Operating Weight	
Basic machine including work attachment, 5 tine grapple 3,630 lbs (1,646 kg)	
Reach 47' (14.3 m)	77,200 lbs (35,000 kg)
Reach 50' 11" (15.5 m)	84,500 lbs (38,000 kg)
Reach 54' 4" (16.6 m)	90,400 lbs (41,000 kg)

Dimensions



Working Ranges



Total Reach: 47' (14.3 m)
Boom 28' 7" (8.7 m), Stick 22' 8" (6.9 m)

Equipped with grapple

A Jib height	51' 6" (15.4 m)
B Dumping height	41' 8" (12.7 m)
F Max. outreach	48' 7" (14.8 m)
G Max. length of jib	52' 1" (15.9 m)
H Max. outreach length	16' 11" (5.16 m)
K Min. length of jib	10' 2" (3.10 m)

Total Reach: 50' 11" (15.5 m)
Boom 31' (9.4 m), Stick 25' 5" (7.7 m)

Equipped with grapple

A Jib height	53' 10" (16.4 m)
B Dumping height	44' 11" (13.7 m)
F Max. outreach	50' 11" (15.5 m)
G Max. length of jib	56' 1" (17.1 m)
H Max. outreach length	19' 8" (6 m)
K Min. length of jib	9' 2" (2.8 m)

Total Reach: 54' 4" (16.6 m)
Boom 34' 9" (10.6 m), Stick 25' 5" (7.7 m)

Equipped with grapple

A Jib height	56' 11" (17.4 m)
B Dumping height	47' 9" (14.6 m)
F Max. outreach	55' 9" (17.0 m)
G Max. length of jib	59' 8" (18.2 m)
H Max. outreach length	20' 10" (6.40 m)
K Min. length of jib	12' 4" (3.8 m)

Standard Equipment

Dual speed drive motors

Fuel tank indicator

Central lubrication point (electrically)

Battery main switch in the negative wire

Skylight with window

Comfort seat with arm rests and lumbar support

Tool-box in the undercarriage

Sealed base boom pivot pins

Seat belts

Emergency boom lowering accumulator

Windscreen washer

Air conditioned cab with storage area

Sliding window in cab door

AM / FM cassette stereo

Hydraulic vertical cab lift, 6' 7" (2 m)

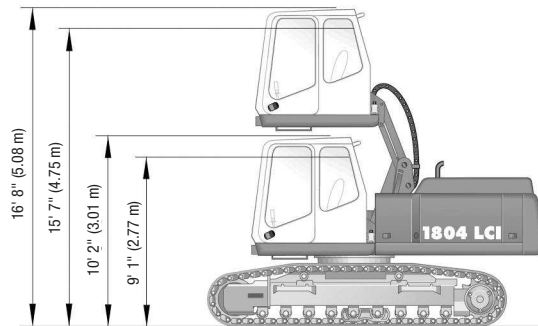
2 spot lights, boom mounted

Hydraulic piping for grab articulated

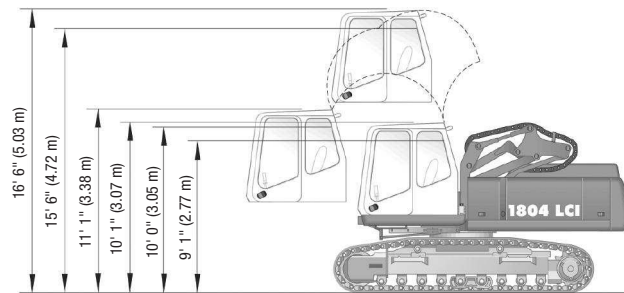
Material Handler 1804 LCI

Cab Design

Hydraulic cab lift



Hydraulic cab lift with horizontal / vertical



Loading Dimensions

Reach 47' (14.3 m) boom system

Length A 41' 6" (12.65 m)

Height B 11' 6" (3.51 m)

Reach 50' 11" (15.52 m) boom system

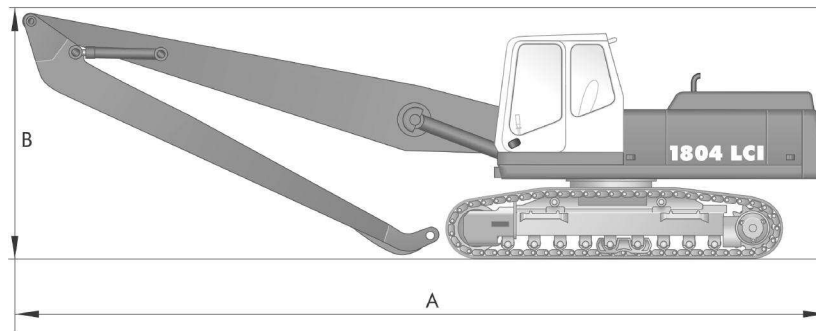
Length A 43' 11" (13.38 m)

Height B 10' 8" (3.25 m)

Reach 54' 4" (16.5 m) boom system

Length A 47' 5" (14.45 m)

Height B 10' 6" (3.20 m)



Attachments

			Capacity	Weight
Grapples	4 tine	Open	.98 yd ³ (799 L)	3,125 lbs (1,417 kg)
	5 tine	Open	.98 yd ³ (799 L)	3,630 lbs (1,646 kg)
	5 tine	Half-Open	.98 yd ³ (799 L)	4,070 lbs (1,846 kg)
Quick-Attach connection available.				
Contact your local TEREX Material Handling distributor for more attachment options.				



TEREX Construction Americas

8800 Rostin Road
Southaven, MS 38671
USA

TEL 662-393-1800
SALES 866-837-3923
PARTS & TECH SUPPORT 888-201-6008
FAX 662-393-1700
EMAIL sales@terexca.com
WEB terexca.com

For more information, product demonstration, or details on purchase, lease and rental plans, please contact your local TEREX Material Handling Distributor.

Effective date: January 1, 2005. For further information, please contact your local distributor or the TEREX sales office listed. Product specifications are subject to change without notice or obligation. The photographs and drawings in this brochure are for illustrative purposes only. Refer to the appropriate Operator's Manual for instructions on the proper use of this equipment. Failure to follow the appropriate Operator's Manual when using our equipment or to otherwise act irresponsibly may result in serious injury or death. Prices and specifications subject to change without notice. The only warranty applicable is the standard written warranty applicable to the particular product and sale. TEREX makes no other warranty, expressed or implied. Products and services listed may be trademarks, service marks or trade-names of TEREX Corporation and/or its subsidiaries in the USA and other countries and all rights are reserved. "TEREX" is a Registered Trademark of TEREX Corporation in the USA and many other countries. Copyright ©2005 TEREX Corporation

1804 LCI 2K 0905B Part #109124

Courtesy of Crane.Market