



AMERICAN HC 275

Hydraulic Crawler Crane 92 HI Boom

LIFT RATINGS IN POUNDS

With 92HI Offset Tip Boom and 172,000 Pound Counterweight

Boom Length	Radius (Feet)	Boom Angle (Degrees)	360 Degree Rating (Pounds)	From Boom Pt. to Ground (Feet)
65' (21.3M)	16	81.4	550,000 *	77
	20	77.8	431,740 *	76
	25	73.2	342,870 *	75
	30	68.5	260,230	74
	35	63.6	205,850	72
	40	58.5	169,740	69
	50	47.2	124,690	62
80' (24.4M)	60	33.1	97,730	52
	18	81.6	480,390 *	87
	20	80.1	431,080 *	86
	25	76.4	342,340 *	85
	30	72.7	260,560	84
	35	68.9	206,110	82
	40	64.9	169,970	80
	50	56.6	124,870	74
90' (27.4M)	60	47.4	97,910	67
	70	36.5	79,960	55
	80	21.0	67,040	36
	19	81.8	453,450 *	97
	20	81.2	430,220 *	97
	25	78.0	341,540 *	96
	30	74.7	260,340	94
	35	71.3	205,850	93
	40	67.9	169,700	91
100' (30.5M)	50	60.8	124,580	86
	60	53.1	97,620	80
	70	44.5	79,700	71
	80	34.2	66,780	58
	90	19.7	57,080	38
	21	81.5	407,940 *	107
	25	79.2	340,540 *	106
	30	76.2	259,990	105
	35	73.3	205,460	103
	40	70.2	169,290	102
110' (33.5M)	50	64.0	124,150	98
	60	57.3	97,190	92
	70	50.1	79,290	84
	80	42.1	66,360	75
	90	32.4	56,670	61
	100	18.6	49,130	40
	22	81.8	387,980 *	117
	25	80.2	339,650 *	116
	30	77.5	259,670	115
	35	74.8	205,110	114
	40	72.1	168,930	112
120' (36.6M)	50	66.5	123,770	109
	60	60.6	96,820	104
	70	54.4	78,920	97
	80	47.6	66,000	89
	90	40.0	56,300	78
	100	30.8	48,760	64
	110	17.7	42,740	41
	23	82.0	369,440 *	126
	25	81.0	338,750 *	126
	30	78.6	259,330	125
	35	76.1	204,730	124
	40	73.6	168,540	123
50	68.6	123,360	119	
60	63.3	96,410	115	
70	57.8	78,530	109	
80	51.9	65,590	102	

Boom Length	Radius (Feet)	Boom Angle (Degrees)	360 Degree Rating (Pounds)	From Boom Pt. to Ground (Feet)
120' (con't)	90	45.5	55,890	93
	100	38.2	48,350	82
	110	29.4	42,320	67
	120	16.9	37,480	43
	130' (39.6M)	25	81.7	321,040 *
30		79.5	259,300	135
35		77.2	204,710	134
40		74.9	168,530	133
50		70.3	123,360	130
60		65.5	96,430	126
70		60.5	78,580	121
80		55.3	65,650	115
90		49.7	55,940	107
100		43.6	48,410	97
110		36.6	42,380	85
120		28.2	37,600	69
130		16.2	33,450	44
140' (42.7M)	26	81.9	297,000 *	146
	30	80.2	258,940	146
	35	78.1	204,320	145
	40	76.0	168,130	144
	50	71.8	122,940	141
	60	67.4	96,010	137
	70	62.8	78,170	132
	80	58.1	65,230	127
	90	53.1	55,520	120
	100	47.8	47,980	111
	110	41.9	41,950	101
	120	35.2	37,200	88
	130	27.2	33,060	72
	140	15.6	29,550	45
150' (45.7M)	28	81.7	288,860	156
	30	80.9	258,550	156
	35	78.9	203,880	155
	40	77.0	167,670	154
	50	73.0	122,460	151
	60	69.0	95,530	148
	70	64.8	77,690	143
	80	60.5	64,740	138
	90	55.9	55,020	132
	100	51.2	47,470	124
	110	46.0	41,440	116
	120	40.4	36,720	105
	130	34.0	32,590	91
	140	26.2	29,090	74
	150	15.1	26,080	47
160' (48.8M)	29	81.8	270,330 *	166
	30	81.5	258,170	166
	35	79.6	203,480	165
	40	77.8	167,250	164
	50	74.1	122,020	162
	60	70.3	95,080	158
	70	66.5	77,260	154
	80	62.5	64,280	150
	90	58.3	54,570	144
	100	54.0	47,010	137
	110	49.4	40,970	129
	120	44.5	36,290	120
	130	39.0	32,150	108
	140	32.8	28,660	94
	150	25.3	25,650	76

Boom Length	Radius (Feet)	Boom Angle (Degrees)	360 Degree Rating (Pounds)	From Boom Pt. to Ground (Feet)
170' (51.8M)	30	82.0	249,690 *	176
	35	80.3	203,060	175
	40	78.5	166,810	174
	50	75.1	121,560	172
	60	71.5	94,620	169
	70	67.9	76,810	165
	80	64.2	63,830	161
	90	60.4	54,090	155
	100	56.4	46,530	149
	110	52.3	40,500	142
	120	47.8	35,850	134
	130	43.0	31,710	124
	180' (54.9M)	140	37.8	28,210
150		31.8	25,200	97
160		24.6	22,600	78
32		81.8	215,060 *	186
35		80.8	202,820	185
40		79.2	166,600	184
50		75.9	121,360	182
60		72.6	94,450	179
70		69.2	76,660	176
80		65.8	63,680	172
90		62.2	53,950	167
100		58.5	46,390	161
110		54.7	40,350	155
120		50.7	35,720	147
190' (57.9M)	130	46.4	31,600	138
	140	41.8	28,090	128
	150	36.7	25,100	115
	160	30.9	22,490	100
	170	23.8	20,220	80
	33	81.9	199,300 *	196
	35	81.3	197,990 *	195
	40	79.8	166,180	195
	50	76.7	120,930	193
	60	73.6	94,000	190
	70	70.4	76,220	187
	80	67.1	63,230	183
	90	63.8	53,490	178
	100	60.4	45,920	173
	110	56.8	40,240	167
200' (61.0M)	120	53.1	35,280	160
	130	49.2	31,140	152
	140	45.1	27,650	142
	150	40.6	24,650	131
	160	35.7	22,050	118
	170	30.0	19,770	103
	180	23.2	17,770	82
	35	81.7	193,970 *	206
	40	80.3	165,740	205
	50	77.4	120,900	203
	60	74.4	93,520	200
	70	71.4	75,740	197
	80	68.3	62,740	194
	90	65.2	52,990	189
	100	62.0	45,410	184
	110	58.7	39,750	179
120	55.3	34,790	172	
130	51.7	30,640	165	
140	47.9	27,140	156	
150	43.9	24,150	146	

LIFT RATINGS IN POUNDS (continued)

With 92HI Offset Tip Boom and 172,000 Pound Counterweight

Boom Length	Radius (Feet)	Boom Angle (Degrees)	360 Degree Rating (Pounds)	From Boom Pt. to Ground (Feet)	
200' (con't)	160	39.5	21,540	135	
	170	34.7	19,260	122	
	180	29.2	17,260	105	
	190	22.6	15,480	84	
	210' (64.0M)	36	81.8	174,640 *	216
40		80.7	165,310	215	
50		78.0	120,460	213	
60		75.2	93,060	211	
70		72.3	75,280	208	
80		69.4	62,270	204	
90		66.5	52,510	200	
100		63.4	44,930	195	
110		60.3	39,290	190	
120		57.1	34,320	184	
130		53.8	30,180	177	
140		50.3	26,680	169	
150		46.7	23,670	160	
160		42.7	21,080	150	
170		38.5	18,790	138	
180		33.8	16,790	125	
190		28.5	15,010	108	
200		22.0	13,420	86	
220' (67.1M)		37	82.0	156,330 *	225
		40	81.2	156,330 *	225
	50	78.5	120,030	223	
	60	75.8	92,590	221	
	70	73.1	74,820	218	
	80	70.4	61,800	215	
	90	67.6	52,030	211	
	100	64.7	44,440	207	
	110	61.8	38,830	202	
	120	58.8	33,850	196	
	130	55.7	29,710	189	
	140	52.5	26,200	182	
	150	49.1	23,200	174	
	160	45.5	20,590	165	
	170	41.7	18,320	154	
	180	37.6	16,310	142	
	190	33.0	14,520	128	
	200	27.8	12,930	110	
	210	21.5	11,500	88	
	230' (70.1M)	39	81.8	132,640 *	235
40		81.6	132,510 *	235	
50		79.0	119,760	233	
60		76.5	92,320	231	
70		73.9	74,580	229	
80		71.3	61,550	225	
90		68.6	51,780	222	
100		65.9	44,190	218	
110		63.1	38,600	213	
120		60.3	33,630	207	
130		57.4	29,490	201	
140		54.4	25,980	195	
150		51.2	22,980	187	
160		47.9	20,380	178	
170		44.5	18,100	169	
180		40.7	16,090	158	
190		36.7	14,310	145	
200		32.3	12,710	131	
210		27.2	11,280	113	
220		21.0	9,990	90	
240' (73.2M)	40	81.9	119,340 *	245	
	50	79.5	119,330	244	
	60	77.1	91,870	242	
	70	74.6	74,130	239	
	80	72.1	61,090	236	
	90	69.6	51,310	233	
	100	67.0	43,720	229	
	110	64.3	38,150	224	
	120	61.7	33,180	219	

Boom Length	Radius (Feet)	Boom Angle (Degrees)	360 Degree Rating (Pounds)	From Boom Pt. to Ground (Feet)	
240' (con't)	130	58.9	29,030	213	
	140	56.1	25,520	207	
	150	53.1	22,520	200	
	160	50.0	19,910	192	
	170	46.8	17,630	183	
	180	43.5	15,620	173	
	190	39.8	13,840	161	
	200	35.9	12,240	148	
	210	31.6	10,810	133	
	220	26.6	9,520	115	
	230	20.6	8,340	92	
	250' (76.2M)	42	81.8	117,270 *	255
		50	79.9	117,270 *	254
60		77.6	91,400	252	
70		75.2	73,650	249	
80		72.8	60,600	247	
90		70.4	50,810	243	
100		67.9	43,210	239	
110		65.4	37,660	235	
120		62.9	32,680	230	
130		60.3	28,530	225	
140		57.6	25,020	219	
150		54.8	22,010	212	
160		52.0	19,400	205	
170	49.0	17,130	196		
180	45.8	15,110	187		
190	42.5	13,330	177		
200	39.0	11,730	165		
210	35.2	10,290	152		
220	30.9	9,000	136		
230	26.1	7,820	117		
240	20.1	6,760	94		
260' (79.2M)	43	81.9	107,130 *	265	
	50	80.3	107,130 *	264	
	60	78.1	90,940	262	
	70	75.8	73,210	260	
	80	73.5	60,130	257	
	90	71.2	50,340	254	
	100	68.8	42,730	250	
	110	66.4	37,190	246	
	120	64.0	32,210	241	
	130	61.5	28,060	236	
	140	59.0	24,550	230	
	150	56.4	21,530	224	
	160	53.7	18,920	217	
170	50.9	16,640	209		
180	48.0	14,630	201		
190	44.9	12,840	191		
200	41.7	11,250	180		
210	38.2	9,800	168		
220	34.5	8,510	155		
230	30.3	7,330	139		
240	25.5	6,260	120		
250	19.7	5,290	95		
270' (82.3M)	44	82.0	98,020 *	275	
	50	80.7	98,020 *	274	
	60	78.5	90,460	272	
	70	76.3	72,740	270	
	80	74.1	59,660	267	
	90	71.9	49,850	264	
	100	69.7	42,240	261	
	110	67.4	36,730	257	
	120	65.1	31,740	252	
	130	62.7	27,580	248	
	140	60.3	24,060	242	
	150	57.8	21,050	236	
	160	55.2	18,440	229	
170	52.6	16,160	222		
180	49.8	14,140	214		
190	47.0	12,350	205		

Boom Length	Radius (Feet)	Boom Angle (Degrees)	360 Degree Rating (Pounds)	From Boom Pt. to Ground (Feet)
270' (con't)	200	44.0	10,750	195
	210	40.8	9,320	184
	220	37.5	8,020	172
	230	33.8	6,840	158
	240	29.7	5,760	141
	250	25.0	4,780	122
280' (85.3M)	46	81.8	84,470 *	285
	50	81.0	84,270 *	284
	60	78.9	83,540 *	282
	70	76.8	72,440	280
	80	74.7	59,360	278
	90	72.6	49,560	275
	100	70.4	41,930	271
	110	68.2	36,440	268
	120	66.0	31,460	263
	130	63.7	27,300	259
	140	61.4	23,790	254
	150	59.1	20,770	248
	160	56.6	18,160	242
	170	54.1	15,880	235
180	51.6	13,870	227	
190	48.9	12,080	219	
200	46.1	10,480	209	
210	43.2	9,040	199	
220	40.1	7,740	188	
230	36.7	6,560	175	
240	33.2	5,480	161	
250	29.2	4,500	144	
290' (88.4M)	47	81.9	76,270 *	295
	50	81.3	75,930 *	294
	60	79.3	75,260 *	293
	70	77.3	71,990	291
	80	75.3	58,900	288
	90	73.2	49,090	285
	100	71.1	41,460	282
	110	69.0	35,990	278
	120	66.9	31,000	274
	130	64.7	26,840	270
	140	62.5	23,320	265
	150	60.2	20,300	259
	160	57.9	17,690	253
	170	55.6	15,400	247
180	53.1	13,390	240	
190	50.6	11,600	232	
200	48.0	10,000	223	
210	45.3	8,560	214	
220	42.4	7,250	203	
230	39.3	6,080	191	
240	36.1	5,000	178	
300' (91.4M)	49	81.8	74,730 *	305
	50	81.6	74,730 *	304
	60	79.7	73,910 *	303
	70	77.7	71,530	301
	80	75.8	58,420	298
	90	73.8	48,590	296
	100	71.8	40,950	293
	110	69.7	35,500	289
	120	67.7	30,510	285
	130	65.6	26,340	281
	140	63.5	22,820	276
	150	61.3	19,800	271
	160	59.1	17,190	265
	170	56.9	14,890	259
180	54.5	12,880	252	
190	52.2	11,090	245	
200	49.7	9,490	236	
210	47.1	8,050	227	
220	44.4	6,740	218	
230	41.6	5,560	207	
240	38.7	4,480	195	

LIFT RATINGS IN POUNDS (continued)

With 92HI Offset Tip Boom and 172,000 Pound Counterweight, 16HL Jib

Boom and Jib Length	Jib Radius (Feet)	5.0 Deg Offset		15.0 Deg Offset		25.0 Deg Offset		
		Boom Angle	Ratings (Pounds)	Boom Angle	Ratings (Pounds)	Boom Angle	Ratings (Pounds)	
70' (21.3M) JIB & 220' (67.1M) BOOM	52	81.9	21,920*					
	60	80.3	21,390*					
	70	78.3	20,720*	80.6	18,490*			
	80	76.3	20,080*	78.6	17,990*	80.7	16,340*	
	90	74.2	19,490*	76.5	17,520*	78.6	15,970*	
	100	72.2	18,980*	74.4	17,120*	76.5	15,610*	
	110	70.1	18,430*	72.3	16,740*	74.4	15,250*	
	120	67.9	17,990*	70.2	16,360*	72.2	14,990*	
	130	65.8	17,510*	68.0	15,990*	70.0	13,900*	
	140	63.6	17,050*	65.8	15,570*	67.8	13,350*	
	150	61.4	16,670*	63.6	15,210*	65.5	12,780*	
	160	59.1	16,300*	61.2	14,870*	63.2	12,290*	
	170	56.7	15,810*	58.9	14,560*	60.8	11,830*	
220	43.7	11,890	45.7	11,900	47.3	10,290*		
70' (21.3M) JIB & 230' (70.1M) BOOM	53	82.0	21,880*					
	60	80.6	21,400*					
	70	78.7	20,730*	80.9	18,420*			
	80	76.7	20,160*	78.9	17,970*	81.0	16,270*	
	90	74.8	19,580*	77.0	17,560*	79.0	16,010*	
	100	72.8	19,080*	75.0	17,130*	77.0	15,650*	
	110	70.8	18,530*	72.9	16,750*	75.0	15,300*	
	120	68.7	18,110*	70.9	16,450*	72.9	14,740*	
	130	66.6	17,610*	68.8	16,080*	70.8	14,120*	
	140	64.5	17,230*	66.7	15,660*	68.6	13,510*	
	150	62.4	16,820*	64.5	15,290*	66.4	12,960*	
	160	60.2	16,420*	62.3	14,990*	64.2	12,440*	
	170	58.0	16,000*	60.1	14,660*	61.9	12,010*	
230	42.9	10,410	44.9	10,420	46.4	10,180*		
70' (21.3M) JIB & 240' (73.2M) BOOM	55	81.9	21,730*					
	60	80.9	21,430*					
	70	79.0	20,850*	81.2	18,420*			
	80	77.2	20,250*	79.3	18,050*	81.3	16,240*	
	90	75.3	19,650*	77.4	17,560*	79.4	16,010*	
	100	73.3	19,100*	75.5	17,180*	77.5	15,700*	
	110	71.4	18,680*	73.5	16,840*	75.5	15,340*	
	120	69.4	18,170*	71.5	16,510*	73.5	14,930*	
	130	67.4	17,700*	69.5	16,150*	71.5	14,280*	
	140	65.4	17,350*	67.5	15,800*	69.4	13,630*	
	150	63.4	16,890*	65.4	15,400*	67.3	13,090*	
	160	61.3	16,570*	63.3	15,060*	65.1	12,590*	
	170	59.1	16,210*	61.2	14,800*	63.0	12,160*	
240	42.2	8,820	44.0	8,830	45.5	8,850		
70' (21.3M) JIB & 250' (76.2M) BOOM	56	81.9	21,800*					
	60	81.2	21,540*					
	70	79.4	20,870*	81.5	18,490*			
	80	77.6	20,330*	79.7	18,070*	81.6	16,280*	
	90	75.7	19,720*	77.8	17,630*	79.8	15,980*	
	100	73.9	19,200*	75.9	17,230*	77.9	15,730*	
	110	72.0	18,730*	74.1	16,900*	76.0	15,380*	
	120	70.1	18,300*	72.1	16,540*	74.0	15,040*	
	130	68.2	17,850*	70.2	16,180*	72.1	14,390*	
	140	66.2	17,440*	68.3	15,870*	70.1	13,790*	
	150	64.3	17,070*	66.3	15,530*	68.1	13,270*	
	160	62.2	16,650*	64.2	15,210*	66.0	12,750*	
	170	60.2	16,360*	62.2	14,870*	63.9	12,330*	
250	42.2	8,850	44.0	8,830	45.5	8,850		
250' (con't)	220	49.1	10,420					
	230	46.7	9,280					
	240	44.1	8,240					
	250	41.5	7,300					
	70' (21.3M) JIB & 260' (79.2M) BOOM	57	82.0	21,710*				
		60	81.5	21,470*				
		70	79.7	20,920*	81.7	18,480*		
		80	77.9	20,330*	80.0	18,070*	81.9	16,270*
		90	76.2	19,800*	78.2	17,620*	80.1	15,950*
		100	74.4	19,330*	76.4	17,280*	78.3	15,700*
		110	72.6	18,850*	74.6	16,940*	76.4	15,410*
		120	70.7	18,370*	72.7	16,560*	74.5	15,130*
		130	68.9	17,910*	70.9	16,250*	72.7	14,530*
140		67.0	17,570*	69.0	15,980*	70.8	13,920*	
150		65.1	17,130*	67.0	15,610*	68.8	13,410*	
160		63.2	16,770*	65.1	15,270*	66.8	12,890*	
170		61.2	16,460*	63.1	14,950*	64.8	12,480*	
260	40.8	5,870	42.5	5,890	43.9	5,910		
70' (21.3M) JIB & 270' (82.3M) BOOM	59	81.9	21,570*					
	60	81.7	21,480*					
	70	80.0	20,930*	82.0	18,470*			
	80	78.3	20,410*	80.3	18,060*			
	90	76.6	19,870*	78.5	17,680*	80.4	15,980*	
	100	74.8	19,360*	76.8	17,330*	78.6	15,660*	
	110	73.1	18,870*	75.0	16,950*	76.8	15,440*	
	120	71.3	18,480*	73.3	16,630*	75.0	15,130*	
	130	69.5	18,040*	71.5	16,340*	73.2	14,720*	
	140	67.7	17,620*	69.6	16,010*	71.4	14,120*	
	150	65.9	17,210*	67.8	15,730*	69.5	13,520*	
	160	64.0	16,910*	65.9	15,390*	67.6	13,050*	
	170	62.1	16,550*	64.0	15,090*	65.7	12,600*	
270	40.1	4,520	41.8	4,530	43.1	4,550		
70' (21.3M) JIB & 280' (85.3M) BOOM	60	82.0	21,460*					
	70	80.3	20,900*					
	80	78.6	20,400*	80.6	17,990*			
	90	77.0	19,830*	78.9	17,630*	80.7	15,920*	
	100	75.3	19,370*	77.2	17,280*	79.0	15,630*	
	110	73.6	18,970*	75.5	16,950*	77.2	15,380*	
	120	71.9	18,510*	73.8	16,590*	75.5	15,180*	
	130	70.1	18,100*	72.0	16,290*	73.7	14,850*	
	140	68.4	17,710*	70.2	16,060*	71.9	14,220*	
	150	66.6	17,310*	68.5	15,730*	70.1	13,680*	
	160	64.8	16,950*	66.6	15,490*	68.3	13,180*	
	170	63.0	16,640*	64.8	15,190*	66.4	12,720*	
	180	61.1	16,490	62.9	14,870*	64.5	12,290*	
280	39.5	3,400	41.1	3,410	42.4	3,440		

LIFT RATINGS IN POUNDS (continued)

With 92HI Offset Tip Boom and 172,000 Pound Counterweight, 16HL Jib

Boom and Jib Length	Jib Radius (Feet)	5.0 Deg Offset		15.0 Deg Offset		25.0 Deg Offset	
		Boom Angle	Ratings (Pounds)	Boom Angle	Ratings (Pounds)	Boom Angle	Ratings (Pounds)
280' (con't)	170	65.7	6,200*	68.1	5,220*	70.3	4,530*
	180	64.0	5,990*	66.4	5,080*	68.6	4,440*
	190	62.3	5,780*	64.7	4,940*	66.9	4,350*
	200	60.6	5,590*	63.0	4,800*	65.1	4,260*
	210	58.8	5,400*	61.2	4,680*	63.3	4,170*
	220	57.0	5,230*	59.4	4,570*	61.5	4,110*
	230	55.2	5,100*	57.5	4,490*	59.6	4,050*
	240	53.3	4,950*	55.6	4,410*	57.6	4,000*
	250	51.3	4,850*	53.7	4,330*	55.6	3,960*
	260	49.4	4,720*	51.7	4,260*	53.6	3,940*
	270	47.3	4,630*	49.6	4,200*	51.5	3,910*
	280	45.2	4,050	47.4	4,060	49.3	3,910*
	100' (30.5M) JIB & 290' (88.4M) BOOM	68	82.0	10,090*			
70		81.7	9,970*				
80		80.2	9,450*				
90		78.7	8,970*	81.2	7,010*		
100		77.2	8,510*	79.7	6,750*	82.0	5,520*
110		75.7	8,080*	78.1	6,460*	80.4	5,350*
120	74.2	7,720*	76.6	6,230*	78.9	5,180*	

Boom and Jib Length	Jib Radius (Feet)	5.0 Deg Offset		15.0 Deg Offset		25.0 Deg Offset	
		Boom Angle	Ratings (Pounds)	Boom Angle	Ratings (Pounds)	Boom Angle	Ratings (Pounds)
290' (con't)	130	72.6	7,380*	75.1	5,980*	77.3	5,040*
	140	71.1	7,050*	73.5	5,790*	75.7	4,880*
	150	69.5	6,790*	71.9	5,590*	74.1	4,750*
	160	67.9	6,530*	70.3	5,400*	72.5	4,620*
	170	66.3	6,270*	68.7	5,250*	70.9	4,520*
	180	64.7	6,020*	67.1	5,080*	69.2	4,430*
	190	63.1	5,810*	65.4	4,940*	67.5	4,320*
	200	61.4	5,630*	63.7	4,830*	65.8	4,250*
	210	59.7	5,460*	62.0	4,690*	64.1	4,160*
	220	58.0	5,290*	60.3	4,580*	62.3	4,100*
	230	56.2	5,130*	58.5	4,500*	60.5	4,040*
	240	54.4	4,990*	56.7	4,400*	58.6	3,980*
	250	52.5	4,860*	54.8	4,340*	56.7	3,950*
	260	50.6	4,760*	52.9	4,260*	54.8	3,920*
	270	48.7	4,240	50.9	4,190*	52.8	3,890*
	280	46.6	3,500	48.9	3,520	50.7	3,550
	290	44.6	2,820	46.7	2,830	48.5	2,870

LIFT RATINGS IN POUNDS (continued)

With 92HI Offset Tip Boom and 172,000 Pound Upper Counterweight, #30 Jib

Boom and Jib Length	Jib Radius (Feet)	5.0 Deg Offset		15.0 Deg Offset		25.0 Deg Offset	
		Boom Angle	Ratings (Pounds)	Boom Angle	Ratings (Pounds)	Boom Angle	Ratings (Pounds)
55' (16.8M) JIB & 140' (42.7M) BOOM	38	81.9	60,000*				
	40	81.3	60,000*				
	50	78.3	60,000*	81.0	60,000*	80.5	38,790*
	60	75.3	60,000*	78.0	56,160*	77.4	38,790*
	70	72.3	60,000*	74.9	49,980*	74.2	37,500*
	80	69.2	59,210*	71.8	44,930*	71.0	34,640*
	90	66.0	53,090*	68.6	40,920*	67.6	32,290*
	100	62.7	47,920*	65.3	40,110*	64.2	30,260*
	110	59.3	42,770	61.9	37,330*	60.6	28,400*
	120	55.8	38,230	58.4	35,040*	56.8	26,930*
130	52.2	34,120	54.7	33,020*	52.8	25,650*	
140	48.3	30,650	50.7	30,660			
55' (16.8M) JIB & 150' (45.7M) BOOM	39	82.0	60,000*				
	40	81.7	60,000*				
	50	78.9	60,000*	81.5	60,000*	81.0	38,760*
	60	76.0	60,000*	78.6	57,750*	78.1	38,760*
	70	73.2	60,000*	75.7	51,650*	75.1	38,600*
	80	70.2	60,000*	72.7	46,410*	72.0	35,720*
	90	67.2	55,290*	69.7	42,440*	68.9	33,270*
	100	64.1	48,180	66.6	40,350*	65.6	31,150*
	110	61.0	42,170	63.4	38,560*	62.3	29,330*
	120	57.7	37,660	60.1	36,040*	58.8	27,890*
130	54.3	33,540	56.7	33,550	55.1	26,490*	
140	50.8	30,070	53.1	30,080	51.2	25,330*	
150	47.0	27,100	49.3	27,110			
55' (16.8M) JIB & 160' (48.8M) BOOM	41	81.8	60,000*				
	50	79.4	60,000*	81.9	60,000*	81.4	38,740*
	60	76.7	60,000*	79.1	59,090*	78.6	38,740*
	70	74.0	60,000*	76.4	53,090*	75.8	38,740*
	80	71.2	60,000*	73.6	47,970*	72.9	36,670*
	90	68.3	55,160	70.7	43,790*	69.9	34,240*
	100	65.4	47,630	67.8	40,280*	66.9	32,120*
	110	62.5	41,620	64.8	39,570*	63.8	30,250*
	120	59.4	37,120	61.7	37,120	60.5	28,700*
	130	56.2	33,020	58.5	33,020	57.1	27,310*
140	52.9	29,540	55.2	29,550	53.6	26,150*	
150	49.5	26,560	51.7	26,570	49.8	24,000	
160	45.8	23,980	48.0	23,990			
55' (16.8M) JIB & 170' (51.8M) BOOM	42	81.9	60,000*				
	50	79.9	60,000*	79.6	60,000*	81.8	38,710*
	60	77.3	60,000*	77.0	54,510*	79.2	38,710*
	70	74.7	60,000*	74.3	49,300*	76.5	38,710*
	80	72.0	60,000*	71.6	45,030*	73.7	37,580*
	90	69.3	54,610	68.9	41,500*	70.9	35,020*
	100	66.6	47,080	66.0	40,340*	68.0	32,900*
	110	63.8	41,050	63.1	36,600	65.1	31,110*
	120	60.9	36,590	60.1	32,480	62.1	29,560*
	130	57.9	32,480	57.0	29,010	58.9	28,160*
140	54.8	29,000	53.8	26,030	55.6	26,030	
150	51.6	26,020	50.4	23,450	52.1	23,450	
160	48.3	23,440	46.8	21,190	48.5	21,200	
170	44.7	21,190					
55' (16.8M) JIB & 180' (54.9M) BOOM	44	81.8	60,000*				
	50	80.3	60,000*	80.1	60,000*	79.6	38,700*
	60	77.9	60,000*	77.6	55,610*	77.1	38,700*
	70	75.4	60,000*	75.0	50,740*	74.5	38,360*
	80	72.8	60,000*	72.4	46,410*	71.8	35,900*
	90	70.3	54,300	69.8	42,710*	69.1	33,790*
	100	67.6	46,770	67.1	40,250*	66.3	31,870*
	110	65.0	40,740	64.4	36,310	63.4	30,310*
	120	62.3	36,310	61.6	32,190	60.5	28,730
	130	59.4	32,190	58.6	28,720	57.4	25,750
140	56.6	28,710	55.6	25,750	54.2	23,170	
150	53.6	25,740	52.5	23,160	50.8	20,910	
160	50.4	23,160	49.2	20,910	47.2	18,930	
170	47.2	20,900					
180	43.7	18,920					
55' (16.8M) JIB & 190' (57.9M) BOOM	45	81.9	60,000*				
	50	80.7	60,000*	80.5	60,000*	80.1	38,670*
	60	78.4	60,000*	78.1	56,540*	77.6	38,670*
	70	76.0	60,000*	75.7	51,980*	75.1	38,670*
	80	73.5	60,000*	73.2	47,590*	72.6	36,760*
	90	71.1	53,770	70.7	44,070*		
	100	68.6	46,230				

LIFT RATINGS IN POUNDS (continued)

With 92HI Offset Tip Boom and 172,000 Pound Upper Counterweight, #30 Jib

Boom and Jib Length	Jib Radius (Feet)	5.0 Deg Offset		15.0 Deg Offset		25.0 Deg Offset	
		Boom Angle	Ratings (Pounds)	Boom Angle	Ratings (Pounds)	Boom Angle	Ratings (Pounds)
65' (19.8M) JIB & 270' (82.3M) BOOM	58	82.0	51,540*				
	60	81.6	51,350*				
	70	79.9	50,370*	81.8	44,310*		
	80	78.2	49,430*	80.0	42,850*	81.8	32,570*
	90	76.4	47,160*	78.3	41,210*	80.0	32,570*
	100	74.7	42,250	76.5	38,370*	78.2	32,570*
	110	72.9	36,940	74.7	36,940	76.4	32,570*
	120	71.1	31,980	72.9	31,980	74.6	31,220*
	130	69.3	27,840	71.1	27,840	72.7	27,850
	140	67.4	24,350	69.2	24,350	70.9	24,360
	150	65.6	21,350	67.3	21,350	69.0	21,360
	160	63.7	18,760	65.4	18,760	67.0	18,770
	170	61.7	16,480	63.5	16,490	65.1	16,500
	180	59.8	14,490	61.5	14,490	63.0	14,500
	190	57.7	12,710	59.5	12,720	61.0	12,720
	200	55.7	11,130	57.4	11,130	58.9	11,140
	210	53.6	9,690	55.3	9,700	56.7	9,710
	220	51.4	8,400	53.1	8,410	54.5	8,420
	230	49.2	7,230	50.8	7,240	52.2	7,250
	240	46.8	6,170	48.5	6,170	49.8	6,180
250	44.4	5,190	46.0	5,190	47.3	5,210	
260	41.9	4,290	43.5	4,300	44.7	4,310	
65' (19.8M) JIB & 280' (85.3M) BOOM	60	81.9	46,040*				
	70	80.2	43,270*				
	80	78.5	40,730*	80.3	34,030*		
	90	76.8	36,990*	78.6	32,710*	80.3	28,640*
	100	75.1	35,070*	76.9	31,430*	78.6	27,810*
	110	73.4	33,240*	75.2	30,130*	76.8	26,940*
	120	71.7	31,570*	73.4	28,820*	75.0	26,090*
	130	69.9	27,480	71.7	27,490	73.3	25,130*
	140	68.1	23,980	69.9	23,990	71.4	23,990
	150	66.3	20,990	68.0	21,000	69.6	21,000
	160	64.5	18,390	66.2	18,400	67.8	18,410
	170	62.6	16,130	64.3	16,130	65.9	16,140
	180	60.7	14,130	62.4	14,130	63.9	14,140
	190	58.8	12,350	60.5	12,360	62.0	12,370
	200	56.8	10,760	58.5	10,760	60.0	10,770
	210	54.8	9,340	56.5	9,340	57.9	9,350
	220	52.7	8,040	54.4	8,050	55.8	8,060
	230	50.6	6,870	52.2	6,880	53.6	6,890
	240	48.4	5,800	50.0	5,810	51.3	5,820
	250	46.1	4,830	47.7	4,830	49.0	4,840
260	43.7	3,940	45.3	3,950	46.5	3,960	
75' (22.9M) JIB & 190' (57.9M) BOOM	50	81.8	42,120*				
	60	79.6	36,150*				
	70	77.4	35,050*	80.1	31,710*		
	80	75.2	33,980*	77.9	30,930*	80.4	28,010*
	90	72.9	32,970*	75.6	30,010*	78.1	27,230*
	100	70.7	32,130*	73.3	29,180*	75.8	26,310*
	110	68.3	31,330*	71.0	28,270*	73.4	24,710*
	120	66.0	30,210*	68.6	27,480*	71.0	23,350*
	130	63.6	29,320*	66.2	26,840*	68.6	22,140*
	140	61.1	28,390*	63.7	26,200*	66.1	21,120*
75' (22.9M) JIB & 200' (61.0M) BOOM	50	81.9	42,160*				
	60	80.0	36,290*				
	70	77.9	35,250*	80.5	31,790*		
	80	75.7	34,200*	78.3	31,060*	80.8	28,120*
	90	73.6	33,250*	76.2	30,210*	78.6	27,440*
	100	71.4	32,450*	74.0	29,350*	76.4	26,780*
	110	69.2	31,600*	71.7	28,580*	74.1	25,170*
	120	66.9	30,710*	69.5	27,760*	71.8	23,840*
	130	64.6	29,660*	67.1	27,040*	69.4	22,620*
	140	62.3	27,980	64.8	26,390*	67.0	21,530*
75' (22.9M) JIB & 240' (73.2M) BOOM	50	81.9	42,160*				
	60	80.0	36,290*				
	70	77.9	35,250*	80.5	31,790*		
	80	75.7	34,200*	78.3	31,060*	80.8	28,120*
	90	73.6	33,250*	76.2	30,210*	78.6	27,440*
	100	71.4	32,450*	74.0	29,350*	76.4	26,780*
	110	69.2	31,600*	71.7	28,580*	74.1	25,170*
	120	66.9	30,710*	69.5	27,760*	71.8	23,840*
	130	64.6	29,660*	67.1	27,040*	69.4	22,620*
	140	62.3	27,980	64.8	26,390*	67.0	21,530*

Boom and Jib Length	Jib Radius (Feet)	5.0 Deg Offset		15.0 Deg Offset		25.0 Deg Offset		
		Boom Angle	Ratings (Pounds)	Boom Angle	Ratings (Pounds)	Boom Angle	Ratings (Pounds)	
75' (22.9M) JIB & 210' (64.0M) BOOM	52	82.0	42,170*					
	60	80.3	36,440*					
	70	78.3	35,310*	80.8	31,800*			
	80	76.2	34,380*	78.8	31,060*	81.1	28,240*	
	90	74.2	33,470*	76.7	30,480*	79.0	27,550*	
	100	72.1	32,540*	74.5	29,540*	76.9	26,900*	
	110	69.9	31,720*	72.4	28,720*	74.7	25,680*	
	120	67.8	30,940*	70.2	27,960*	72.5	24,230*	
	130	65.6	30,040*	68.0	27,330*	70.2	23,070*	
	140	63.3	27,460	65.8	26,690*	67.9	21,940*	
	150	61.1	24,470	63.5	24,480	65.6	21,000*	
	160	58.7	21,900	61.1	21,900	63.2	20,150*	
	170	56.3	19,630	58.7	19,640	60.7	19,290*	
	180	53.8	17,640	56.2	17,640	58.2	17,650	
	190	51.3	15,870	53.6	15,870	55.6	15,880	
	200	48.6	14,290	50.9	14,290	52.8	14,300	
	210	45.8	12,870	48.1	12,880	49.9	12,890	
	75' (22.9M) JIB & 220' (67.1M) BOOM	54	81.9	41,850*				
		60	80.7	36,400*				
		70	78.7	36,400*	81.1	31,850*		
80		76.7	34,550*	79.1	31,120*	81.4	28,230*	
90		74.7	33,680*	77.1	30,500*	79.4	27,650*	
100		72.7	32,760*	75.1	29,710*	77.3	27,010*	
110		70.6	31,950*	73.0	28,940*	75.2	26,100*	
120		68.6	31,180*	70.9	28,170*	73.1	24,730*	
130		66.5	30,420*	68.8	27,530*	71.0	23,480*	
140		64.3	26,930	66.7	26,880*	68.8	22,350*	
75' (22.9M) JIB & 230' (70.1M) BOOM	55	81.9	41,460*					
	60	81.0	36,350*					
	70	79.1	36,350*	81.4	31,700*			
	80	77.2	34,540*	79.5	31,100*	81.7	28,290*	
	90	75.2	33,730*	77.6	30,480*	79.8	27,710*	
	100	73.3	32,830*	75.6	29,860*	77.8	27,090*	
	110	71.3	32,060*	73.6	29,200*	75.8	26,500*	
	120	69.3	31,290*	71.6	28,440*	73.7	25,120*	
	130	67.3	30,070	69.6	27,690*	71.7	23,880*	
	140	65.2	26,590	67.5	26,590	69.6	22,750*	
75' (22.9M) JIB & 240' (73.2M) BOOM	57	81.8	36,690*					
	60	81.3	36,690*					
	70	79.4	35,470*	81.7	31,730*			
	80	77.6	34,600*	79.8	31,110*	82.0	28,270*	
	90	75.7	33,790*	78.0	30,520*	80.1	27,820*	
	100	73.8	33,040*	76.1	29,890*	78.2	27,220*	
	110	71.9	32,170*	74.2	29,300*	76.2	26,590*	
	120	70.0	31,520*	72.2	28,660*	74.3	25,510*	
	130	68.0	29,570	70.3	27,900*	72.3	24,270*	
	140	66.1	26,080	68.3	26,080	70.3	23,140*	

LIFT RATINGS IN POUNDS (continued)

With 92HI Offset Tip Boom and 172,000 Pound Upper Counterweight, #30 Jib

Boom and Jib Length	Jib Radius (Feet)	5.0 Deg Offset		15.0 Deg Offset		25.0 Deg Offset	
		Boom Angle	Ratings (Pounds)	Boom Angle	Ratings (Pounds)	Boom Angle	Ratings (Pounds)
260' BOOM (con't)	130	70.2	24,490*	72.5	21,590*	74.6	19,520*
	140	68.4	23,770*	70.7	21,080*	72.8	19,090*
	150	66.6	22,210	68.9	20,570*	71.0	18,760*
	160	64.8	19,620	67.0	19,630	69.1	18,380*
	170	62.9	17,360	65.2	17,360	67.2	17,370
	180	61.0	15,360	63.3	15,360	65.3	15,370
	190	59.1	13,580	61.3	13,590	63.3	13,600
	200	57.1	12,000	59.3	12,000	61.3	12,020
	210	55.1	10,570	57.3	10,570	59.2	10,580
	220	53.0	9,280	55.2	9,290	57.1	9,300
	230	50.9	8,110	53.0	8,120	54.9	8,130
	240	48.7	7,040	50.8	7,050	52.6	7,060
	250	46.4	6,070	48.5	6,070	50.2	6,080
	260	44.0	5,180	46.1	5,190	47.8	5,200
85' (25.9M) JIB & 270' (82.3M) BOOM	63	81.9	29,470*				
	70	80.8	28,890*				
	80	79.1	28,100*	81.4	24,780*		
	90	77.5	27,400*	79.8	24,230*	81.9	21,340*
	100	75.8	26,690*	78.1	23,620*	80.2	20,850*
	110	74.2	26,050*	76.4	22,910*	78.5	20,430*
	120	72.5	25,500*	74.7	22,350*	76.8	20,010*
	130	70.8	24,780*	73.0	21,750*	75.1	19,580*
	140	69.0	24,060*	71.3	21,230*	73.3	19,150*
	150	67.3	21,690	69.5	20,720*	71.6	18,810*
	160	65.5	19,100	67.7	19,100	69.8	18,510*
	170	63.7	16,830	65.9	16,830	67.9	16,850
	180	61.9	14,830	64.1	14,840	66.1	14,850
	190	60.0	13,060	62.2	13,060	64.2	13,070
	200	58.2	11,460	60.3	11,470	62.2	11,480
	210	56.2	10,040	58.4	10,040	60.2	10,050
	220	54.2	8,740	56.4	8,750	58.2	8,760
	230	52.2	7,570	54.3	7,580	56.1	7,590
	240	50.1	6,510	52.2	6,520	53.9	6,530
250	47.9	5,530	50.0	5,540	51.7	5,550	
260	45.7	4,640	47.7	4,640	49.4	4,660	
270	43.3	3,810	45.3	3,820	47.0	3,830	
95' (29.0M) JIB & 240' (73.2M) BOOM	61	81.9	24,720*				
	70	80.4	23,920*				
	80	78.6	23,200*	81.3	19,790*		
	90	76.9	22,440*	79.6	19,150*		
	100	75.1	21,540*	77.8	18,480*	80.4	16,260*
	110	73.3	20,730*	76.0	17,880*	78.5	15,830*
	120	71.5	19,960*	74.2	17,330*	76.7	15,450*
	130	69.7	19,250*	72.4	16,880*	74.8	15,060*
	140	67.9	18,600*	70.5	16,360*	73.0	14,690*
	150	66.0	17,990*	68.6	15,910*	71.1	14,380*
	160	64.1	17,370*	66.7	15,540*	69.1	14,120*
	170	62.2	16,850*	64.8	15,160*	67.1	13,810*
	180	60.2	16,400*	62.8	14,790*	65.1	13,540*
	190	58.2	14,760	60.8	14,420*	63.0	13,330*
	200	56.1	13,180	58.7	13,180	60.9	13,120*
	210	54.0	11,750	56.5	11,760	58.8	11,770
	220	51.8	10,470	54.4	10,480	56.5	10,490
230	49.6	9,300	52.1	9,310	54.2	9,320	
240	47.3	8,250	49.7	8,250	51.8	8,270	
95' (29.0M) JIB & 250' (76.2M) BOOM	62	82.0	24,650*				
	70	80.6	24,100*				
	80	79.0	23,360*	81.6	19,870*		
	90	77.3	22,650*	79.9	19,220*		
	100	75.6	21,740*	78.2	18,630*	80.7	16,290*
	110	73.8	20,960*	76.4	18,010*	78.9	15,860*
	120	72.1	20,190*	74.7	17,480*	77.1	15,480*
	130	70.3	19,420*	72.9	17,000*	75.3	15,100*
	140	68.5	18,810*	71.1	16,540*	73.5	14,790*
	150	66.7	18,190*	69.3	16,090*	71.7	14,480*
	160	64.9	17,590*	67.5	15,650*	69.8	14,160*
	170	63.0	17,070*	65.6	15,270*	67.9	13,900*
	180	61.2	15,990	63.7	14,890*	65.9	13,620*
	190	59.2	14,220	61.7	14,230	64.0	13,420*
	200	57.2	12,640	59.7	12,640	61.9	12,660
	210	55.2	11,210	57.7	11,210	59.9	11,220
	220	53.2	9,920	55.6	9,930	57.7	9,940
230	51.0	8,750	53.4	8,760	55.5	8,770	
240	48.8	7,690	51.2	7,700	53.2	7,710	
250	46.5	6,720	48.9	6,720	50.9	6,740	

Boom and Jib Length	Jib Radius (Feet)	5.0 Deg Offset		15.0 Deg Offset		25.0 Deg Offset	
		Boom Angle	Ratings (Pounds)	Boom Angle	Ratings (Pounds)	Boom Angle	Ratings (Pounds)
95' (29.0M) JIB & 260' (79.2M) BOOM	64	81.9	24,540*				
	70	80.9	24,100*				
	80	79.3	23,430*	81.8	19,960*		
	90	77.6	22,670*	80.2	19,300*		
	100	76.0	21,960*	78.5	18,680*	80.9	16,360*
	110	74.3	21,110*	76.8	18,140*	79.2	15,970*
	120	72.6	20,340*	75.1	17,600*	77.5	15,590*
	130	70.9	19,650*	73.4	17,070*	75.8	15,210*
	140	69.2	18,970*	71.7	16,620*	74.0	14,830*
	150	67.4	18,410*	69.9	16,200*	72.2	14,570*
	160	65.7	17,800*	68.1	15,750*	70.4	14,250*
	170	63.9	17,260*	66.3	15,370*	68.6	13,960*
	180	62.0	15,470	64.5	15,050*	66.7	13,710*
	190	60.2	13,700	62.6	13,700	64.8	13,500*
	200	58.3	12,110	60.7	12,120	62.9	12,130
	210	56.4	10,690	58.8	10,690	60.9	10,700
	220	54.4	9,390	56.8	9,400	58.8	9,410
230	52.3	8,220	54.7	8,230	56.7	8,240	
240	50.2	7,160	52.6	7,170	54.6	7,180	
250	48.1	6,180	50.4	6,190	52.3	6,200	
260	45.8	5,290	48.1	5,290	50.0	5,310	
95' (29.0M) JIB & 270' (82.3M) BOOM	65	82.0	24,540*				
	70	81.2	24,190*				
	80	79.6	23,490*				
	90	78.0	22,780*	80.5	19,370*		
	100	76.4	22,120*	78.8	18,820*	81.2	16,400*
	110	74.7	21,260*	77.2	18,200*	79.5	16,020*
	120	73.1	20,570*	75.6	17,730*	77.9	15,630*
	130	71.4	19,890*	73.9	17,200*	76.2	15,250*
	140	69.8	19,190*	72.2	16,740*	74.5	14,930*
	150	68.1	18,620*	70.5	16,290*	72.8	14,610*
	160	66.4	18,000*	68.8	15,910*	71.0	14,310*
	170	64.6	16,940	67.0	15,540*	69.2	14,060*
	180	62.9	14,950	65.3	14,950	67.4	13,800*
	190	61.1	13,170	63.5	13,170	65.6	13,190
200	59.3	11,580	61.6	11,590	63.7	11,600	
210	57.4	10,160	59.8	10,160	61.8	10,180	
220	55.5	8,860	57.8	8,870	59.9	8,880	
230	53.5	7,690	55.9	7,700	57.9	7,710	
240	51.5	6,630	53.8	6,640	55.8	6,650	
250	49.5	5,650	51.8	5,660	53.7	5,670	
260	47.3	4,750	49.6	4,760	51.5	4,770	
270	45.1	3,930	47.4	3,930	49.2	3,950	

MAXIMUM BOOM & JIB SELF-ERECTION DATA

	BOOM LENGTH (Feet)	JIB LENGTH		
		16HL JIB (Feet)	#30 JIB (Feet)	#40 JIB (Feet)
BLOCKED OVER THE END	300	50	0	0
	290	100	0	45
	280	-	65	75
	270	-	95	105
	280	0	0	0
OVER THE SIDE	270	70	0	0
	260	100	35	45
	250	-	65	75
	240	-	95	105

LOAD HOISTING INFORMATION

1-1/8" Diameter EEIPS Wire Rope			
MAXIMUM LIFTING CAPACITY (lbs.)	MINIMUM PARTS OF LINE	MAXIMUM HOISTING DISTANCE (Feet)	
		MAIN HOIST	AUXILIARY HOIST
550,000	14	90	90
490,280	12	105	105
449,420	11	110	110
408,570	10	130	130
367,710	9	145	145
326,850	8	160	160
286,000	7	185	185
245,140	6	215	215
204,280	5	260	260
163,420	4	325	325
122,570	3	435	435
81,710	2	655	655
40,850	1	1,310	1,310

Lifting any load with 14 parts of main fall load line requires the use of the single sheave crossover hanger block. Refer to the [HC275 Operator's Manual](#) for detailed information.

16HL JIB LOAD HOISTING INFORMATION

1-1/8" Diameter EEIPS Wire Rope			
MAXIMUM LIFTING CAPACITY (lbs.)	MINIMUM PARTS OF LINE	MAXIMUM HOISTING DISTANCE (Feet)	
		MAIN HOIST	AUXILIARY HOIST
32,000	1	1,310	1,310

#30 JIB LOAD HOISTING INFORMATION

1-1/8" Diameter EEIPS Wire Rope			
MAXIMUM LIFTING CAPACITY (lbs.)	MINIMUM PARTS OF LINE	MAXIMUM HOISTING DISTANCE (Feet)	
		MAIN HOIST	AUXILIARY HOIST
60,000	2	655	655
40,850	1	1,310	1,310

SPECIFICATIONS

Swing Speed	1.70 RPM
Travel Speed55 MPH High Range
.....	.37 MPH Low Range
Gradeability	30% (approximately 17°)

BOOM COMPOSITION CHART

Boom Length (Feet)	Boom Sections					
	25' 92HI Inner	15' 92HT Center	20' 92HT Center	10' 92ST Center	50' 92ST Center	40' 92H Outer
65	1	0	0	0	0	1
80	1	1	0	0	0	1
90	1	1	0	1	0	1
100	1	1	1	0	0	1
110	1	1	1	1	0	1
120	1	1	1	2	0	1
130	1	1	0	0	1	1
140	1	1	0	1	1	1
150	1	1	1	0	1	1
160	1	1	1	1	1	1
170	1	1	1	2	1	1
180	1	1	0	0	2	1
190	1	1	0	1	2	1
200	1	1	1	0	2	1
210	1	1	1	1	2	1
220	1	1	1	2	2	1
230	1	1	0	0	3	1
240	1	1	0	1	3	1
250	1	1	1	0	3	1
260	1	1	1	1	3	1
270	1	1	1	2	3	1
280	1	1	0	0	4	1
290	1	1	0	1	4	1
300	1	1	1	0	4	1

16HL JIB COMPOSITION CHART

Jib Length (Feet)	20' Inner	10' Center	20' Center	20' Outer
40	1	0	0	1
50	1	1	0	1
60	1	0	1	1
70	1	1	1	1
80	1	0	2	1
90	1	1	2	1
100	1	0	3	1

#30 JIB COMPOSITION CHART

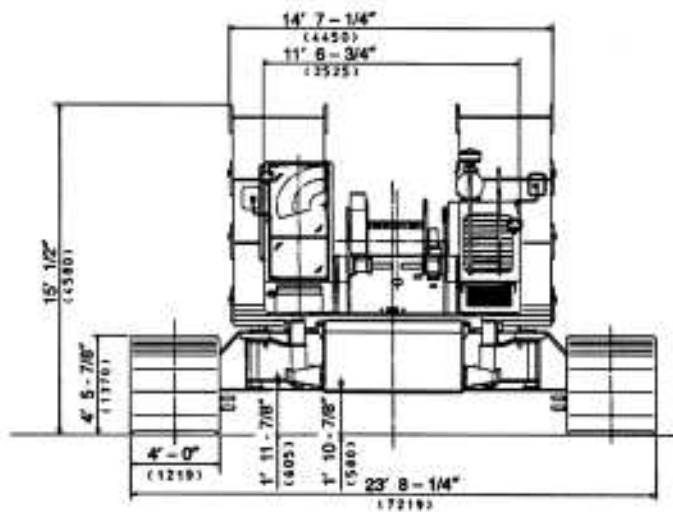
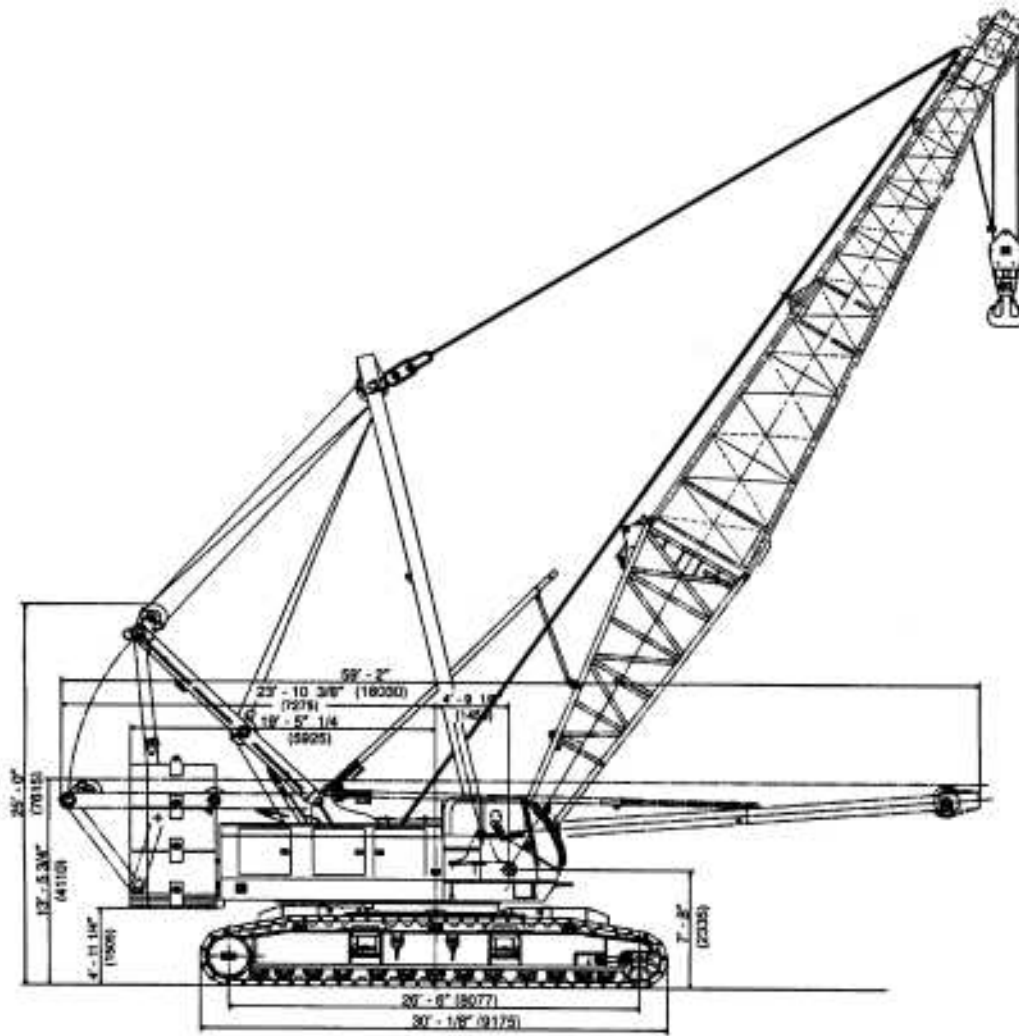
Jib Length (Feet)	12.5' Inner	10' Center	30' Center	12.5' Outer
35	1	1	0	1
45	1	2	0	1
55	1	0	1	1
65	1	1	1	1
75	1	2	1	1
85	1	0	2	1
95	1	1	2	1

HOIST DRUM PERFORMANCE

MAIN and AUXILIARY HOIST – 1-1/8" Diameter Rope					
Rope Layer	High Range		Low Range		Total Rope Length
	Line Speed (Feet per Minute)	Single Line Pull	Line Speed (Feet per Minute)	Single Line Pull	
1st*	360	27,030	180	54,055	155
2nd*	390	24,910	195	49,845	314
3rd*	420	23,105	210	46,230	496
4th*	450	21,560	225	43,100	680
5th*	480	20,195	240	40,390	885
6th*	510	18,980	255	37,985	1,095
7th*	540	17,925	270	35,845	1,325
8th**	570	-	285	-	1,560
9th**	600	-	300	-	1,815

* = Working Layers • ** = Storage Layers

HC 275 GENERAL DIMENSIONS



! WARNING

This rating chart is invalid if the crane has been modified or altered by use of other than GENUINE AMERICAN PARTS as such modifications or alterations may affect its capacity or safe operation. See American Crane Corporation Service Bulletin #259.

The ratings in this chart are for planning purposes only. Only those ratings specifically assigned to a crane and mounted in the operator's cab or in the Operator's Manual should be used for actual operation.

Ratings in this chart are in POUNDS and do not exceed the percentage of tipping specified for this crane by ANSI B30.5. All ratings require that the crane be standing level on a firm uniformly supporting surface.

Do not lift loads in excess of those shown on this chart. Lifting loads in excess of those shown or operation not in accordance with good operating practice, including limitations shown on page 3499 of Operator's Manual, can cause tipping, structural damage or catastrophic failure.

Asterisk (*) areas on this chart indicate ratings which are limited by strength of material or factors other than stability (tipping).

"RADIUS IN FEET" is the horizontal distance at ground level from the crane centerline of rotation to a vertical line through the center of gravity of the suspended load.

When using the main boom fall with jib in place, the main fall ratings must be reduced by the jib effective weight shown on the jib rating chart plus twice the weight of all suspended blocks, slings, rope, etc., at the jib fall.

Blocks, slings, buckets and other load carrying devices are considered part of the load. The weight of standard hoisting ropes for the rating at a given radius has been calculated as part of the boom point load and need not be considered in determining net allowable loads.

Ratings shown on this chart make no allowance for such factors as out of plumb loads, wind, poor soil conditions and dynamic effects due to excessive operating speeds. The user (operator) must exercise judgement to make allowance for these conditions. See page 3499 of Operator's Manual for detailed information.

No account is taken of the wind force on the load. This effect, which can be substantial for loads with large surface areas, must be considered by the user. In any wind it is strongly recommended that taglines be used to control the load.

Combinations of boom or boom and jib with a total length exceeding 350 ft (107M) can be operated at full rated capacity only in wind speeds of 15 mph (24 km/h) or less. If lifts are to be performed in winds between 15 mph (24 km/h) and 25 mph (40 km/h), ratings must be reduced 10%. No operation of the above combinations should be attempted in wind speeds over 40 km/h (25 MPH). The above limitations do not take into account loads with excessive surface area which are not restrained by tag lines.

BOOM HOIST LINE is 18 parts of 7/8 inch diameter 6 x 26, WS, FW, RAL, IWRC, EIPS wire rope with a minimum breaking strength of 79,600 pounds.

BOOM PENDANT SUSPENSION is 4 parts of 1-3/8 inch diameter EEIPS wire rope with a minimum breaking strength of 211,000 pounds.

JIB BACKSTAY LINE is 7/8 inch diameter wire rope with a minimum breaking strength of 69,200 pounds.

JIB FRONTSTAY PENDANT SUSPENSION is 2 parts of 7/8 inch diameter wire rope with a minimum breaking strength of 69,200 pounds.

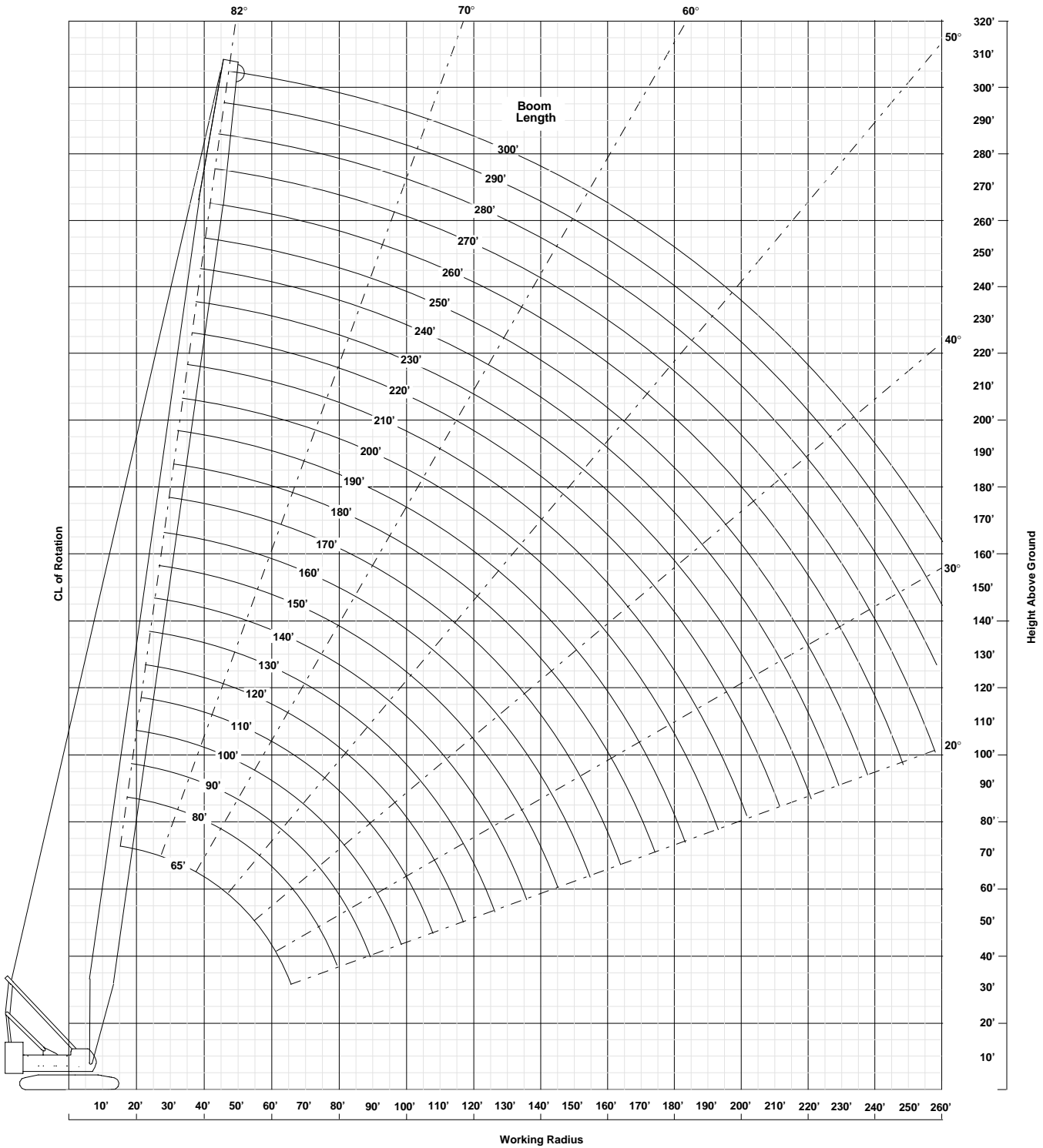
MAIN LOAD LINE is 1-1/8 inch diameter 6x25, FW, RRL, IWRC, EEIPS wire rope with a minimum breaking strength of 143,000 pounds.

WHIPLINE is 1-1/8 inch diameter 6 x 25, FW, RRL, IWRC, EEIPS wire rope with a minimum breaking strength of 143,000 pounds.

ERECTION

Erection "BLOCKED OVER THE END" is with the boom over the idler end with idler tumblers blocked (See operator's manual for blocking instructions). Erection "OVER THE SIDE" is with the boom 90° to the side frames. Blocks, slings and other load carrying devices must be on the ground during erection.

AMERICAN MODEL HC 275 WORKING RANGES WITH 92HI BOOM



For more information, product demonstration, or details on sales, lease and rental plans, please contact your local Terex American Crane Distributor.

We reserve the right to amend these specifications at any time without notice. The only warranty applicable is our standard written warranty applicable to the particular product and sale. We make no other warranty, expressed or implied.

 **TEREX CRANES**

AMERICAN CRANE CORPORATION
 202 Raleigh Street
 Wilmington, NC 28412 USA
 (910) 395-8500 • FAX: (910) 395-8538
 E-mail: american@american-crane.com

www.terexlift.com