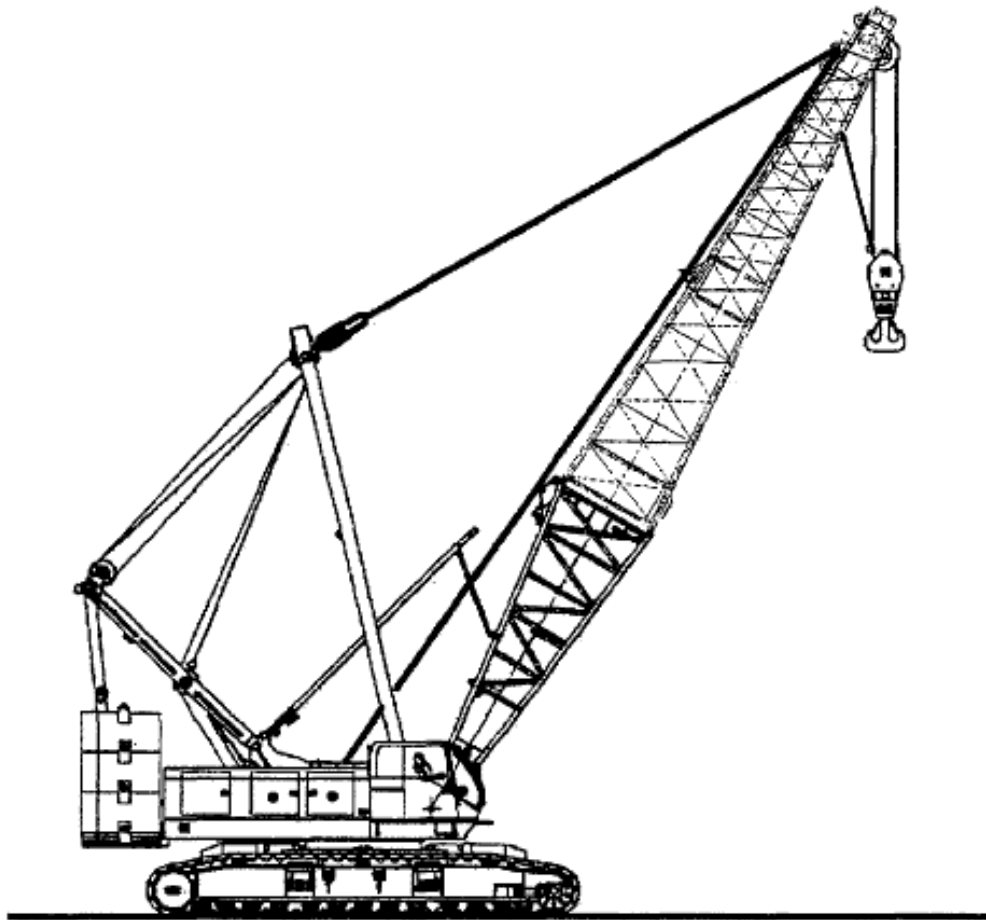




TEREX® | AMERICAN

HC275

PARTS CATALOG



TEREX S/N AC4334 and Above
IHI S/N HG81 and Above

September 2012

1086149

IHI HC275

INDEX 目次

Serial No. HG81~

DESCRIPTION	名 称	SHEET No.
HYDRAULIC PIPING:	油圧配管:	
HIGH & LOW PRESSURE PIPING	上部高低圧配管組立	8 - 1
MAIN CONTROL VALVE PIPING	主コントロールバルブ配管	8 - 2
OPERATION PIPING ASS'Y	運転装置配管組立	8 - 3
CONTROL PIPING ASS'Y(1)	制御配管組立(1)	8 - 4
CONTROL PIPING ASS'Y(2)	制御配管組立(2)	8 - 5
CONTROL VALVE PIPING ASS'Y	コントロールバルブ配管組立	8 - 6
BLOCK VALVE PIPING ASS'Y	ブロックバルブ配管組立	8 - 7
BOOM HOIST MOTOR PIPING ASS'Y	ブームホイストモータ配管組立	8 - 8
COUNTER WEIGHT CYLINDER PIPING	カウンタウエイトシリンダ配管	8 - 9
OIL TANK ASS'Y	作動油タンク組立	8 - 10
AUXILIARY POWER PIPING	補助動力配管	8 - 11
REEVING WINCH PIPING	補助ウインチ配管	8 - 12
MANIFOLD ASS'Y	マニホールド組立	8 - 14
BOOM & JIB		
BOOM INNER ASSEMBLY 25' 92HI		9 - 1
BOOM INNER WELDMENT 25' 92HI		9 - 1A
BOOM ANGLE INDICATOR ASSEMBLY		9 - 1B
BOOM FOOT PIN ASSEMBLY		9 - 2
BOOM OUTER ASSEMBLY 40' 92HI		9 - 3
BOOM OUTER WELDMENT 40' 92HI		9 - 3A
GUIDE SHEAVE ASSEMBLY BOOM OUTER		9 - 3B
SHEAVE ASSEMBLY PARTS LIST ONLY		9 - 3C
GUIDE SHEAVE ASSEMBLY BOOM OUTER LEAD IN		9 - 3D
BOOM POINT SHEAVE ASSEMBLY		9 - 3E
DEAD END, UNIVERSAL PART LIST ONLY		9 - 3F
EQUALIZER ASSEMBLY		9 - 3G
BOOM OUTER ASSEMBLY 40' 92H PL ONLY	AC 4408 AND EARLIER	9 - 4
BOOM OUTER WELDMENT 40'92HI	AC 4408 AND EARLIER	9 - 4A
GUIDE SHEAVE ASSEMBLY BOOM OUTER	AC 4408 AND EARLIER	9 - 4B
GUIDE SHEAVE ASSEMBLY BOOM OUTER LEAD IN	AC 4408 AND EARLIER	9 - 4C

Rev. No. ①

IHI HC275

INDEX 目次

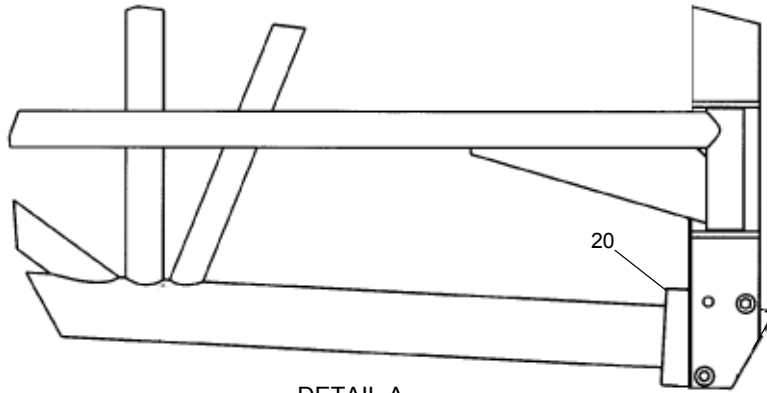
Serial No. HG81~

DESCRIPTION	名 称	SHEET No.
BOOM POINT SHEAVE ASSEMBLY	AC 4408 AND EARLIER	9 - 4D
SHEAVE GUARD ASSEMBLY	AC 4408 AND EARLIER	9 - 4E
HANGER BLOCK ASSEMBLY FOR 14 PARTS OF LINE		9 - 5
BOOM CENTER ASSEMBLY 10' 92ST		9 - 6
BOOM CENTER WELDMENT 10' 92ST		9 - 6A
TIMBER INSTALLATION 92" BOOM WITH 4.5" CHORD		9 - 7
BOOM CENTER ASSEMBLY 15' 92HI		9 - 8
BOOM CENTER WELDMENT 15' 92HI		9 - 8A
TIMBER INSTALLATION 92" BOOM WITH 5.0" CHORD		9 - 9
BOOM CENTER ASSEMBLY 20' 92HT		9 - 10
BOOM CENTER WELDMENT 20' 92HT		9 - 10A
BOOM CENTER ASSEMBLY 50' 92ST		9 - 11
BOOM CENTER WELDMENT 50' 92ST		9 - 11A
BOOM SUSPENSION PENDANTS		9 - 12
ANTI TWO BLOCK ASSEMBLY		9 - 13
INST'L UPPER LEVEL 3RD DRUM- 21K SLP NON-FREE SPOOL		9 - 14
INST'L, 3RD DRUM ASSY- 92HI BOOM NON FREESPOOL		9 - 15
ASSY 3RD DRUM SKID- 21K SLP NON-FREESPOOL		9 - 15A
INSTALLATION GUIDE SHEAVEBOOM INNER ASSEMBLY, SHEAVE BOX		9 - 16 9 - 16A
FLEETING SHEAVE ASSY-BOOM INNER		9 - 17
FLEETING SHEAVE ASSEMBLY		9 - 17A
HYDRAULIC BOOM PIPING INST'L-3RD DRUM		9 - 18
HYDRAULIC HOSE KIT		9 - 18A
3RD GUIDE SHEAVE ASSY-92HI BOOM TIP		9 - 19
SHEAVE ASSY-20" OD FOR 11/8" ROPE		9 - 19A
3RD GUIDE SHEAVE ASSY-92H BOOM TIP	FOR ASSY. 476050	9 - 20

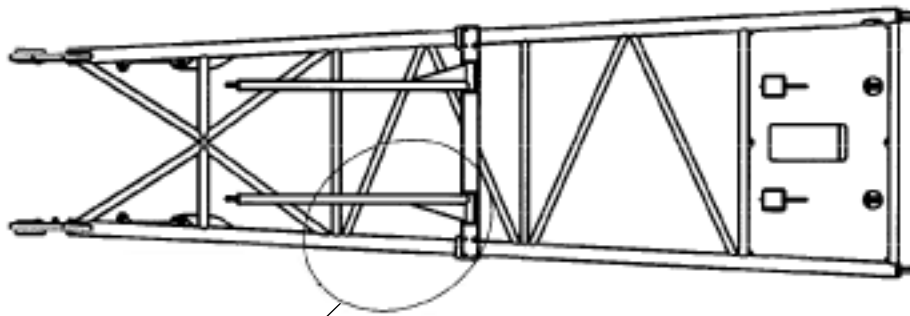
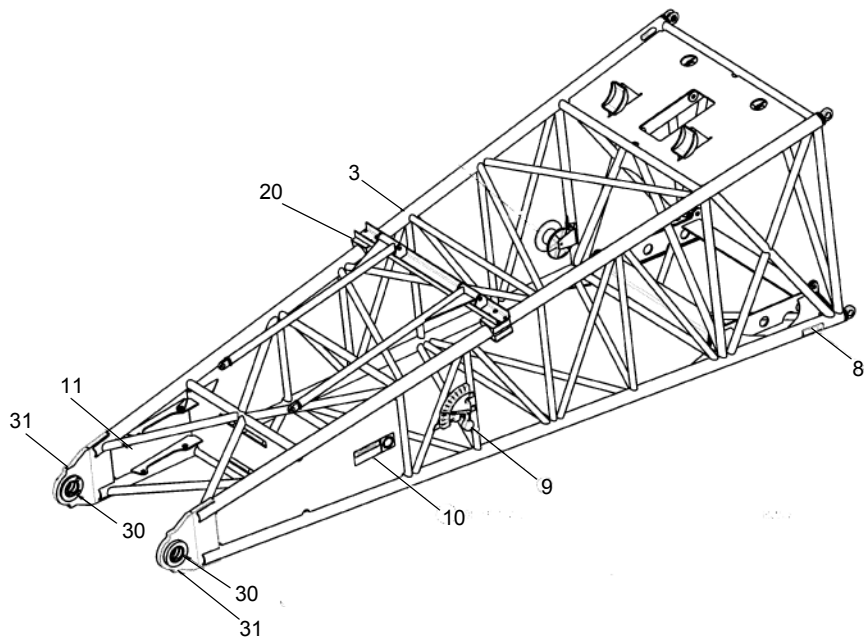
Rev. No. ①

SECTION 9

BOOM & JIB



DETAIL A



DETAIL A

HC275 1187499

IHI

MODEL HC275

BOOM INNER ASSEMBLY 25' 92HI

REV NO. ①
SHEET NO. 9 - 1

9



Courtesy of Crane.Market

KEY NO	PART NO	DESCRIPTION	QTY
0	X 1187499	Boom Inner Assembly 25' 92HI	
2*	1077993	* Paint & Decal Tubular Booms	1 STY
3	1187489	* Boom Inner Weldment (25' 92HI)	1
4*	1045331	* Paint, Enamel Black Air-Dry Enamel, ALKYD	7 GAL
5*	1106349	* Solvents, Reducing; See D055 SPECS.	2 GAL
6*	1106553	* Paint, Primer Buff Air-Dry Primer, ALKYD	7 GAL
8	1078048	* Label, Name Warning, Boom	2
9	1106435	* Indicator Boom Angle Installation W/Hardware	1
10	1065036	* Plate, Name Danger, to Prevent Serious	2
20	1187591	* INST, Poly Blocks (For IHI Boom Stops On 92HI Boom)	2
30	1187897	* Bushing, Boom Foot	2
31	810460	* Fitting, Lubrication	2

NOTE : * KEY NOs 2, 4, 5, 6 ARE NOT SHOWN IN THE ILLUSTRATION

IHI

MODEL HC275

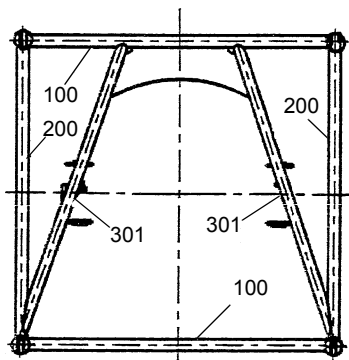
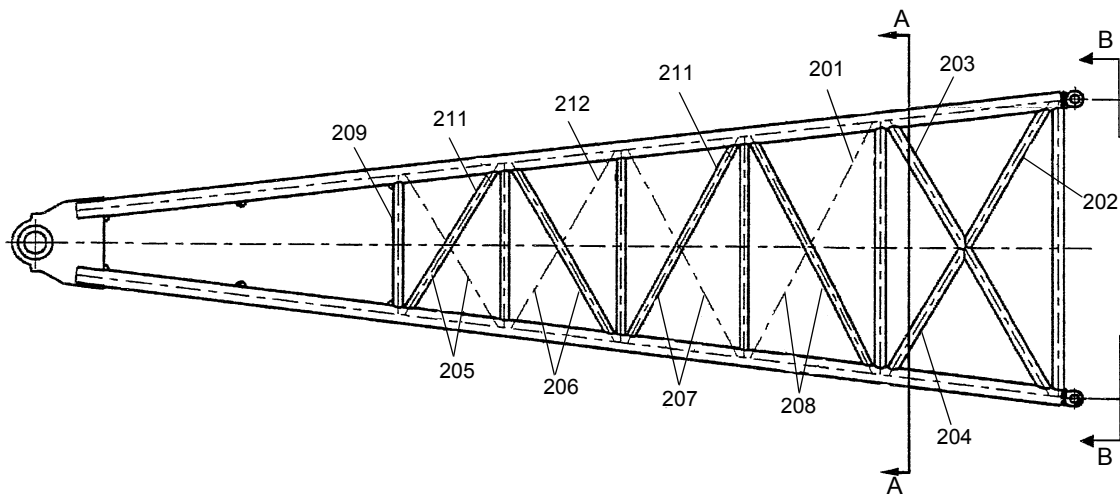
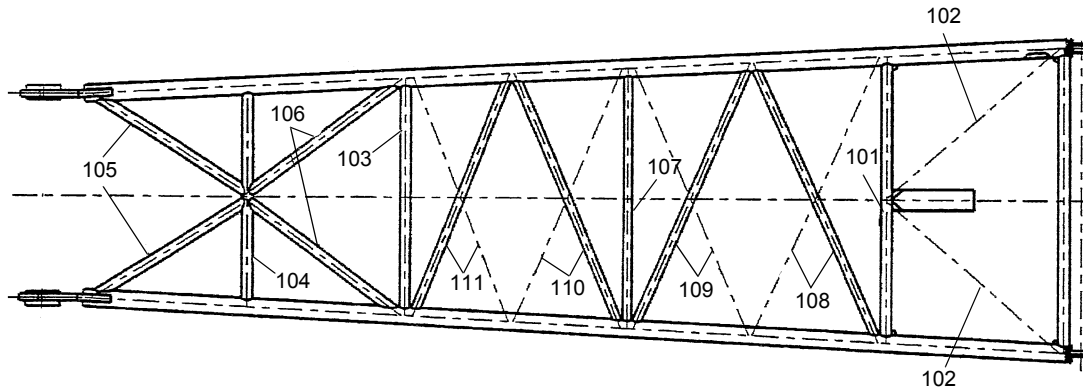
BOOM INNER ASSEMBLY 25' 92HI

REV NO. ①
SHEET NO. 9 - 1

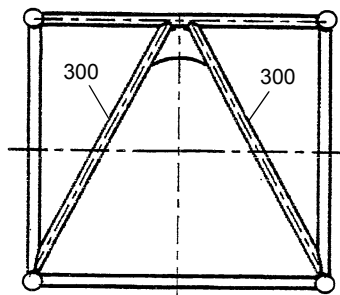
9



Courtesy of Crane.Market



SECTION B - B



SECTION A - A

HC275 1187489

IHI

MODEL HC275

BOOM INNER WELDMENT 25' 92HI

REV NO. ①
SHEET NO. 9 - 1A

9

Courtesy of Crane.Market

KEY NO	PART NO	DESCRIPTION	QTY
0	X 1187489	Weldment, 92HI Boom, 25FT.Inner	
100	1187550	* Tube, Lacing	2
101	1187551	* Tube, Lacing	2
102	1187552	* Tube, Lacing	2
103	1187553	* Tube, Lacing	2
104	1187554	* Tube, Lacing	2
105	1187555	* Tube, Lacing	4
106	1187556	* Tube, Lacing	4
107	1187557	* Tube, Lacing	2
108	1187558	* Tube, Lacing	2
109	1187559	* Tube, Lacing	2
110	1187560	* Tube, Lacing	2
111	1187561	* Tube, Lacing	2
200	1187562	* Tube, Lacing	2
201	1187563	* Tube, Lacing	2
202	1187564	* Tube, Lacing	2
203	1187565	* Tube, Lacing	2
204	1187566	* Tube, Lacing	2
205	1187567	* Tube, Lacing	2
206	1187568	* Tube, Lacing	2
207	1187569	* Tube, Lacing	2
208	1187570	* Tube, Lacing	2
209	1187571	* Tube, Lacing	2
211	1187572	* Tube, Lacing	2
212	1187573	* Tube, Lacing	2
214	1187574	* Tube, Lacing	2
300	1187575	* Tube, Lacing	2
301	1187576	* Tube, Lacing	2

NOTE

IHI

MODEL HC275

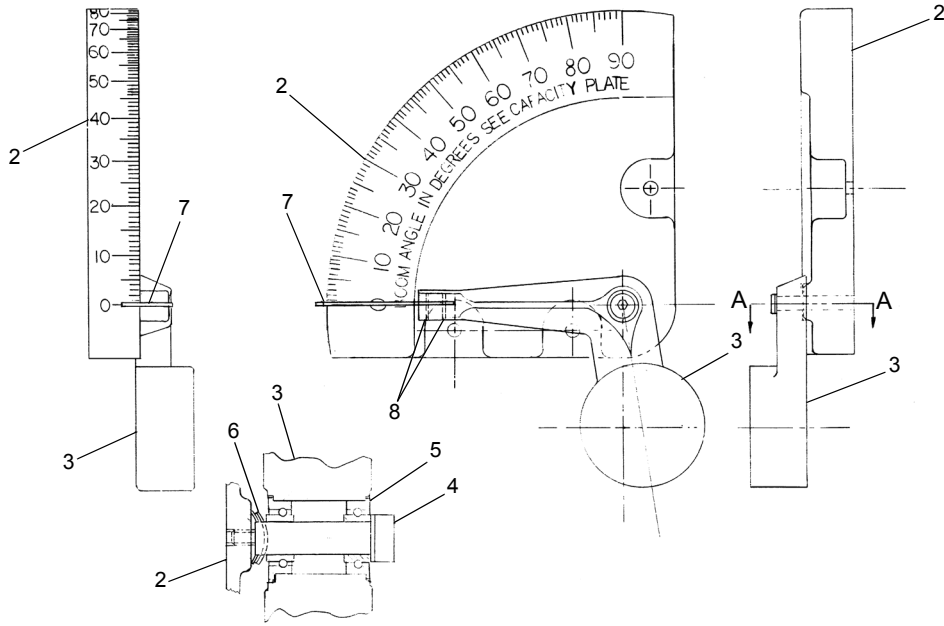
BOOM INNER WELDMENT 25' 92HI

REV NO. ^⓪
SHEET NO. 9 - 1A

9



Courtesy of Crane.Market



SECTION A - A

KEY NO	PART NO	DESCRIPTION	QTY
0	X 1105776	Boom Angle Indicator Assembly	
2	1105775	* Panel, Angle Indicator	1
3	1105401	* Arm, Angle Indicator	1
4	1103632	* Bolt, Strippr	1
5	1103633	* BRG, RLR	2
6	1103634	* Washer, UBend	2
7	1105777	* Plate	1
8	812169	* Pin, Spring	2

NOTE

HC275 1105776

IHI

BOOM ANGLE INDICATOR ASSEMBLY

9

MODEL HC275

REV NO. ①
SHEET NO. 9 - 1B

Courtesy of Crane.Market

Refer to Page 2-4

HC275 F31111700

IHI

MODEL HC275

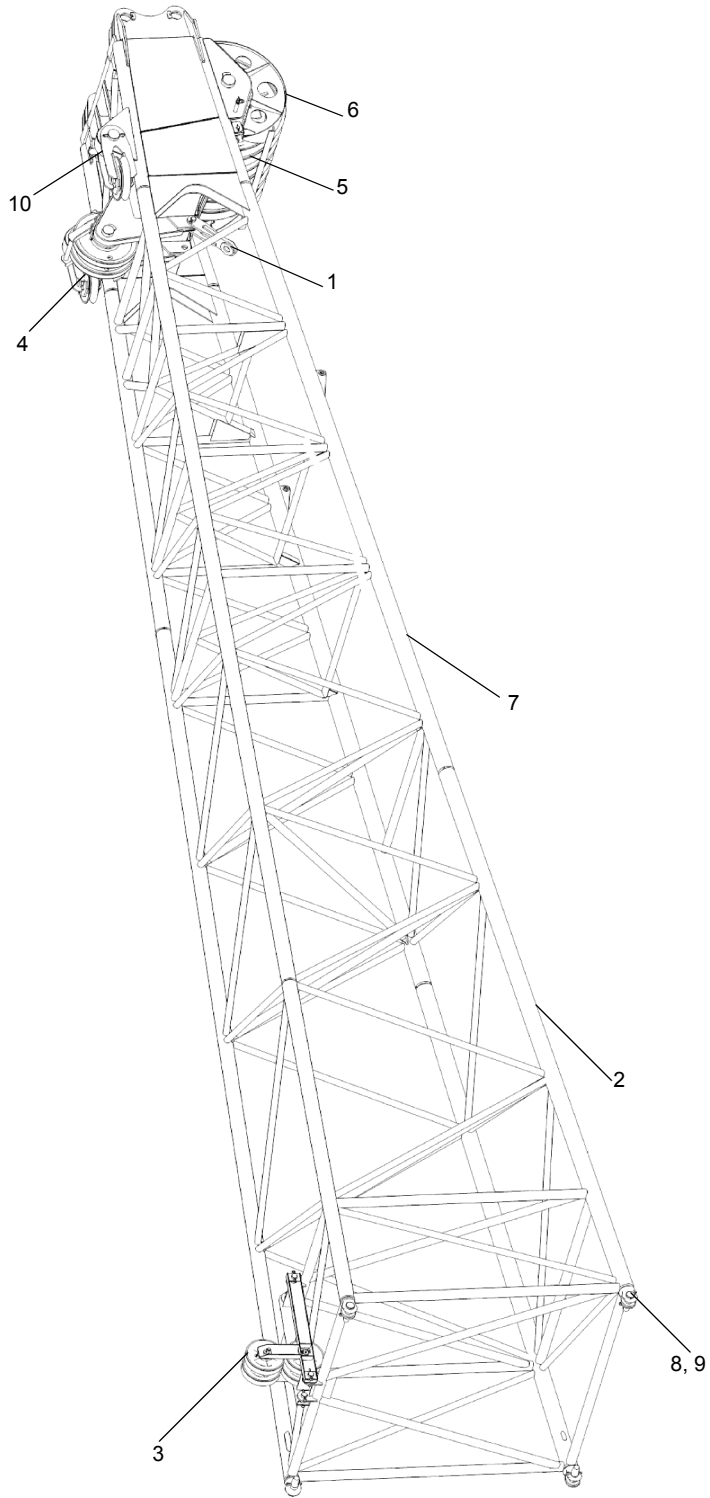
BOOM FOOT PIN ASSEMBLY

9

REV NO. ①
SHEET NO. 9 - 2



Courtesy of Crane.Market



HC275 1189400

IHI

MODEL HC275

BOOM OUTER ASSEMBLY 40' 92HI

9

REV NO. ①
SHEET NO. 9 - 3



Courtesy of Crane.Market


KEY NO	PART NO	DESCRIPTION	QTY
0	X 1189400	Boom Outer Assembly (40' 92HI)	
1	1189095	* End, Dead UNIV. W/Wedge & Socket	1
2	436634	* Plate, Name Installation	1
3	1189390	* Guide Sheave Assembly	1
4	1189412	* Guide Sheave Assembly	1
5	1189413	* Boom Point Assembly	1
6	714031	* Sheave Guard	1
7	1189401	* Boom Outer Weldment (40' 92HI)	1
8	410556	* Pin, Headed	4
9	804919	* Pin, Cotter	4
10	615850	* Equalizer Assembly	2

NOTE

IHI

MODEL HC275

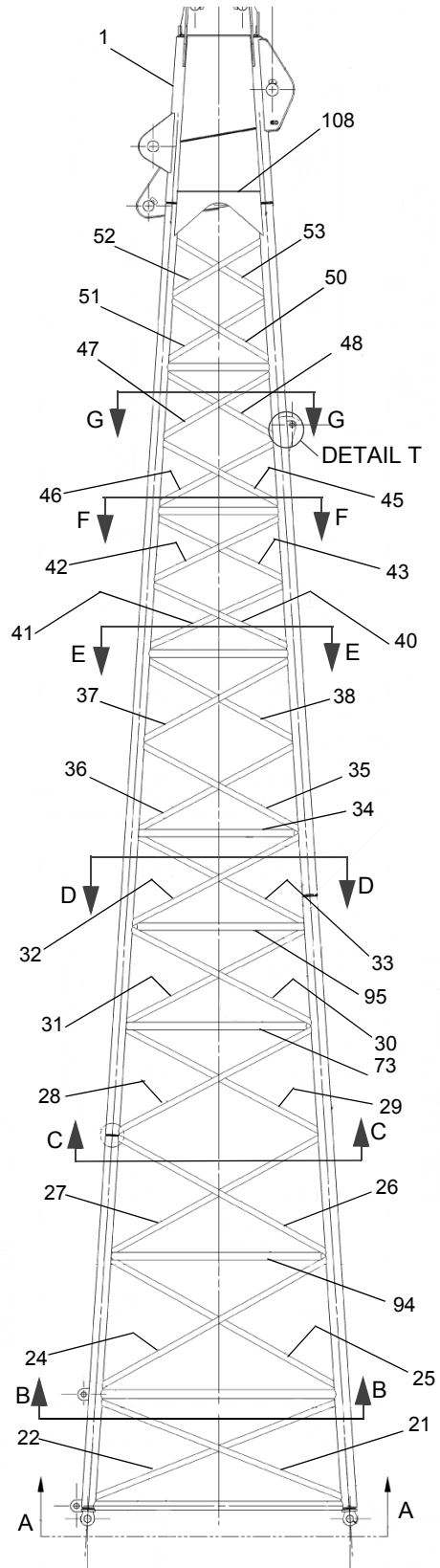
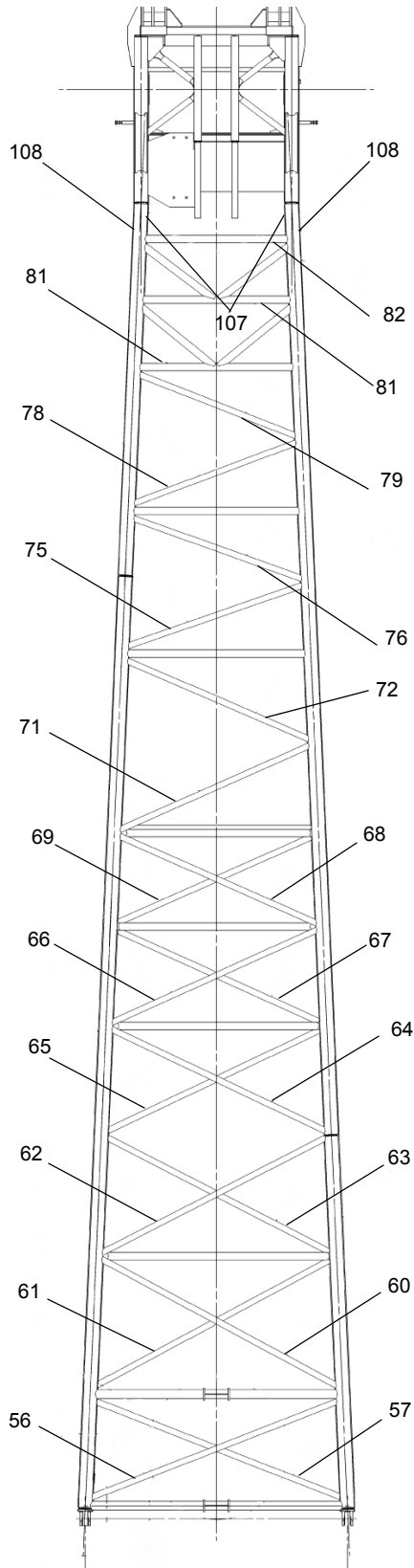
BOOM OUTER ASSEMBLY 40' 92HI

REV NO. 
SHEET NO. 9 - 3

9



Courtesy of Crane.Market



HC275 1189401

IHI

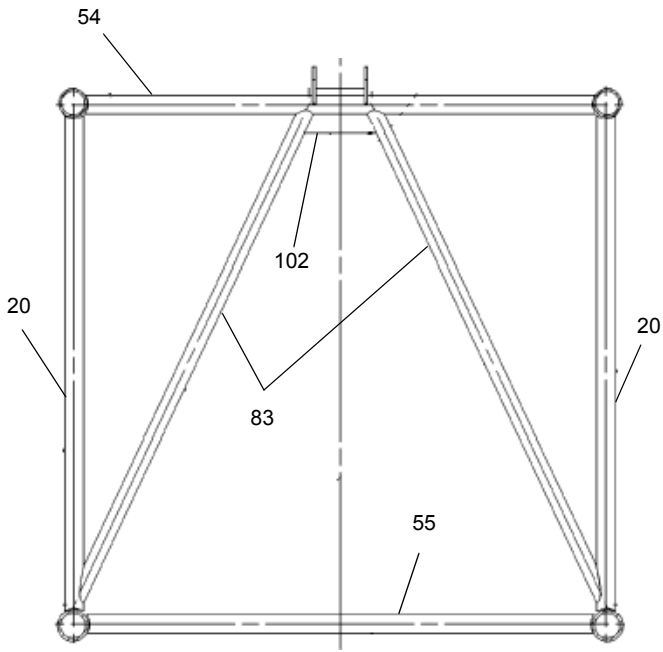
BOOM OUTER WELDMENT 40' 92HI

MODEL HC275

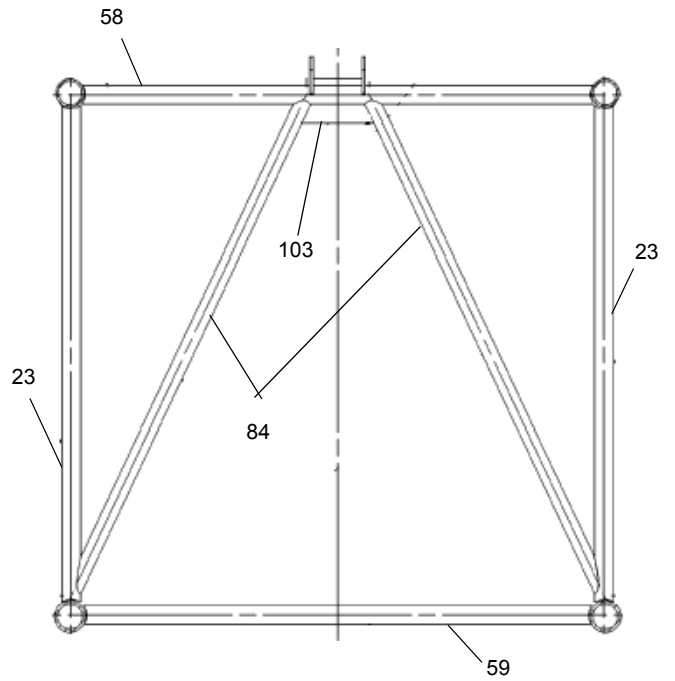
REV NO. ①
SHEET NO. 9 - 3A

9

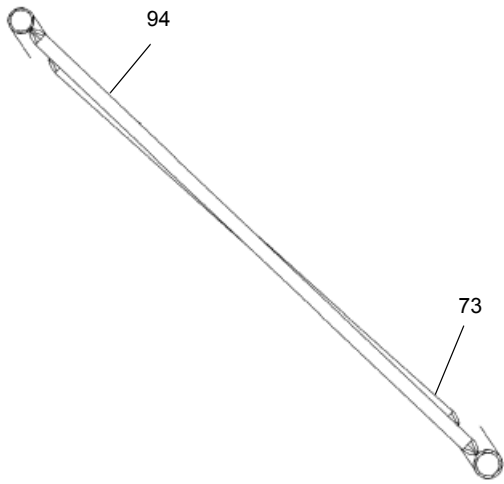
Courtesy of Crane.Market



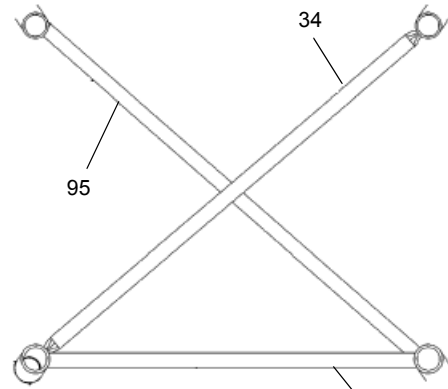
VIEW A-A



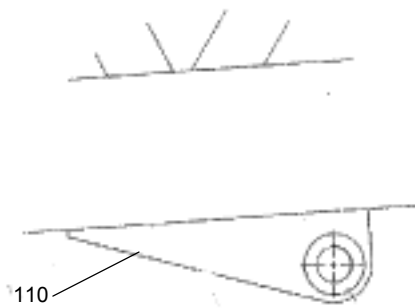
SECTION B-B



SECTION C-C



SECTION D-D



DETAIL -T

HC275 1189401

IHI

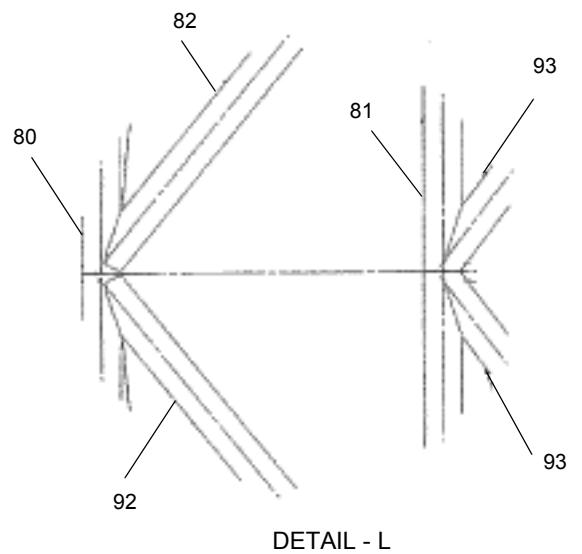
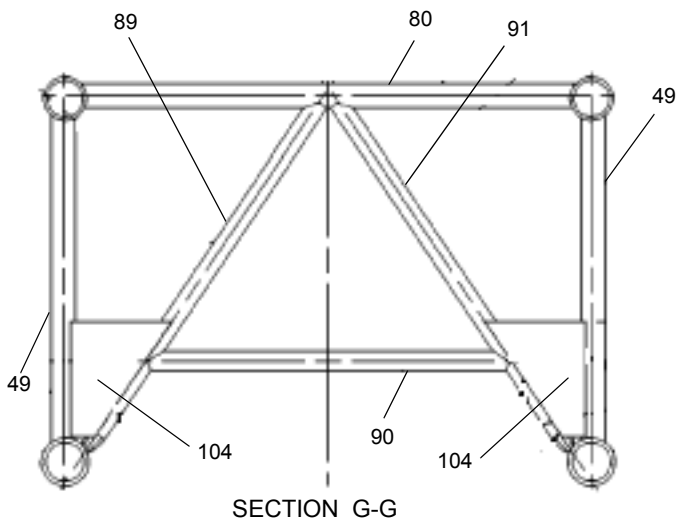
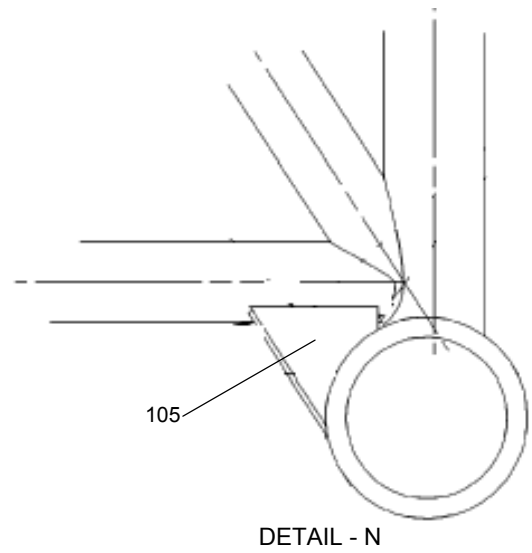
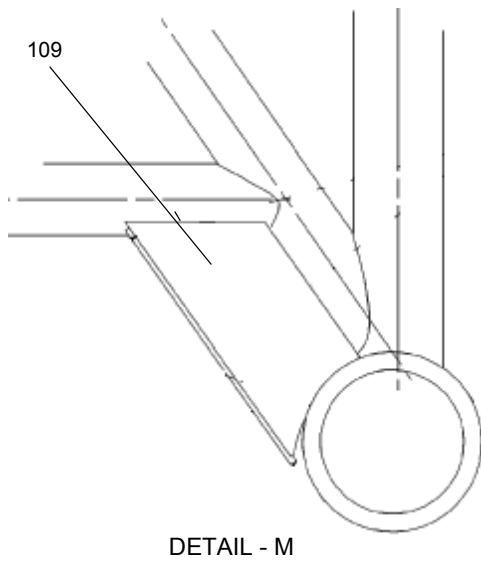
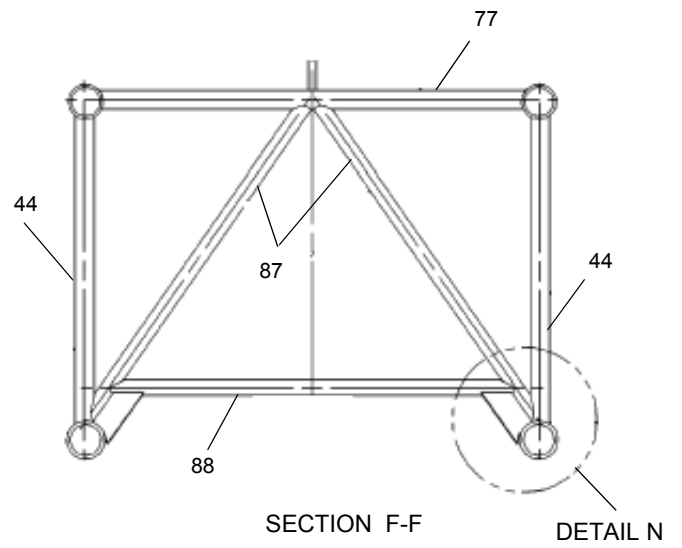
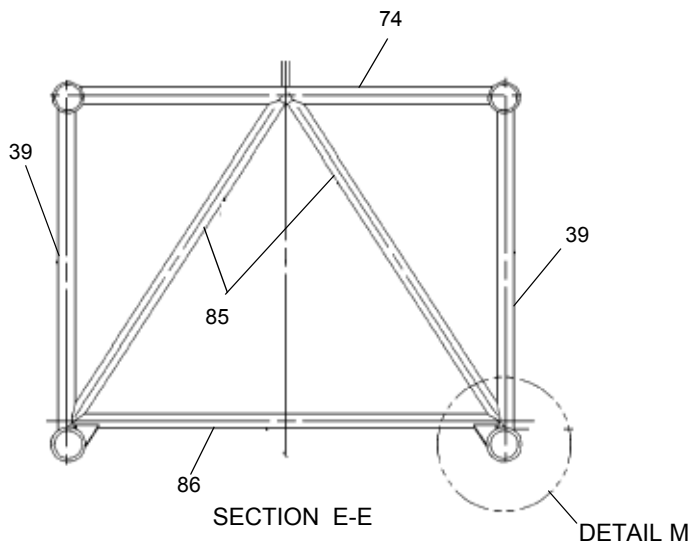
MODEL HC275

BOOM OUTER WELDMENT 40' 92HI

REV NO. ①
SHEET NO. 9 - 3A

9

Courtesy of Crane.Market



HC275 1189401

IHI

BOOM OUTER WELDMENT 40' 92HI

9

MODEL HC275

REV NO. ①
SHEET NO. 9 - 3A

Courtesy of Crane.Market

KEY NO	PART NO	DESCRIPTION	QTY
0	X 1189401	Boom Outer Weldment (40' 92HI)	
1*	1189405	* Boom Tip Weldment (40' 92HI)	1
20	1189415	* Tube Lacing	2
21	1189416	* Tube Lacing	1
22	1189417	* Tube Lacing	1
23	1189418	* Tube Lacing	2
24	1189419	* Tube Lacing	1
25	1189420	* Tube Lacing	1
26	1189421	* Tube Lacing	1
27	1189422	* Tube Lacing	1
28	1189423	* Tube Lacing	1
29	1189424	* Tube Lacing	1
30	1189425	* Tube Lacing	1
31	1189426	* Tube Lacing	1
32	1189427	* Tube Lacing	1
33	1189428	* Tube Lacing	1
34	1189429	* Tube Lacing	1
35	1189430	* Tube Lacing	1
36	1189431	* Tube Lacing	1
37	1189432	* Tube Lacing	1
38	1189433	* Tube Lacing	1
39	1189434	* Tube Lacing	2
40	1189435	* Tube Lacing	1
41	1189436	* Tube Lacing	1
42	1189437	* Tube Lacing	1
43	1189438	* Tube Lacing	1
44	1189439	* Tube Lacing	2
45	1189440	* Tube Lacing	1

NOTE : * KEY NO. 1 IS NOT SHOWN IN THE ILLUSTRATION

IHI

MODEL HC275

BOOM OUTER WELDMENT 40' 92HI

REV NO. ^①
SHEET NO. 9 - 3A

9



Courtesy of Crane.Market

KEY NO	PART NO	DESCRIPTION	QTY
46	1189441	* Tube Lacing	1
47	1189442	* Tube Lacing	1
48	1189443	* Tube Lacing	1
49	1189444	* Tube Lacing	2
50	1189445	* Tube Lacing	1
51	1189446	* Tube Lacing	1
52	1189447	* Tube Lacing	1
53	1189448	* Tube Lacing	1
54	1189449	* Tube Lacing	1
55	1189450	* Tube Lacing	1
56	1189451	* Tube Lacing	1
57	1189452	* Tube Lacing	1
58	1189453	* Tube Lacing	1
59	1189454	* Tube Lacing	1
60	1189455	* Tube Lacing	1
61	1189456	* Tube Lacing	1
62	1189457	* Tube Lacing	1
63	1189458	* Tube Lacing	1
64	1189459	* Tube Lacing	1
65	1189460	* Tube Lacing	1
66	1189461	* Tube Lacing	1
67	1189462	* Tube Lacing	1
68	1189463	* Tube Lacing	1
69	1189464	* Tube Lacing	1
70	1189465	* Tube Lacing	1
71	1189466	* Tube Lacing	1
72	1189467	* Tube Lacing	1
73	1189468	* Tube Lacing	1
74	1189469	* Tube Lacing	1

NOTE :

IHI

MODEL HC275

BOOM OUTER WELDMENT 40' 92HI

REV NO. ^⓪
SHEET NO. 9 - 3A

9



Courtesy of Crane.Market

KEY NO	PART NO	DESCRIPTION	QTY
75	1189470	* Tube Lacing	1
76	1189471	* Tube Lacing	1
77	1189472	* Tube Lacing	1
78	1189473	* Tube Lacing	1
79	1189474	* Tube Lacing	1
80	1189475	* Tube Lacing	1
81	1189476	* Tube Lacing	1
82	1189477	* Tube Lacing	1
83	1189478	* Tube Lacing	2
84	1189479	* Tube Lacing	2
85	1189480	* Tube Lacing	2
86	1189481	* Tube Lacing	1
87	1189482	* Tube Lacing	2
88	1189483	* Tube Lacing	1
89	1189484	* Tube Lacing	1
90	1189485	* Tube Lacing	1
91	1189486	* Tube Lacing	1
92	1189487	* Tube Lacing	2
93	1189488	* Tube Lacing	2
94	1189489	* Tube Lacing	1
95	1189490	* Tube Lacing	1
102	1189397	* Plate	1
103	1189398	* Plate	1
104	1189491	* Plate	4
105	1189492	* Stiffener Weldment	2
107	436152	* Plate	2
108	436210	* Plate	2
109	438241	* Stiffener Weldment	2
110	470484	* Bracket Weldment	2

NOTE :

IHI

MODEL HC275

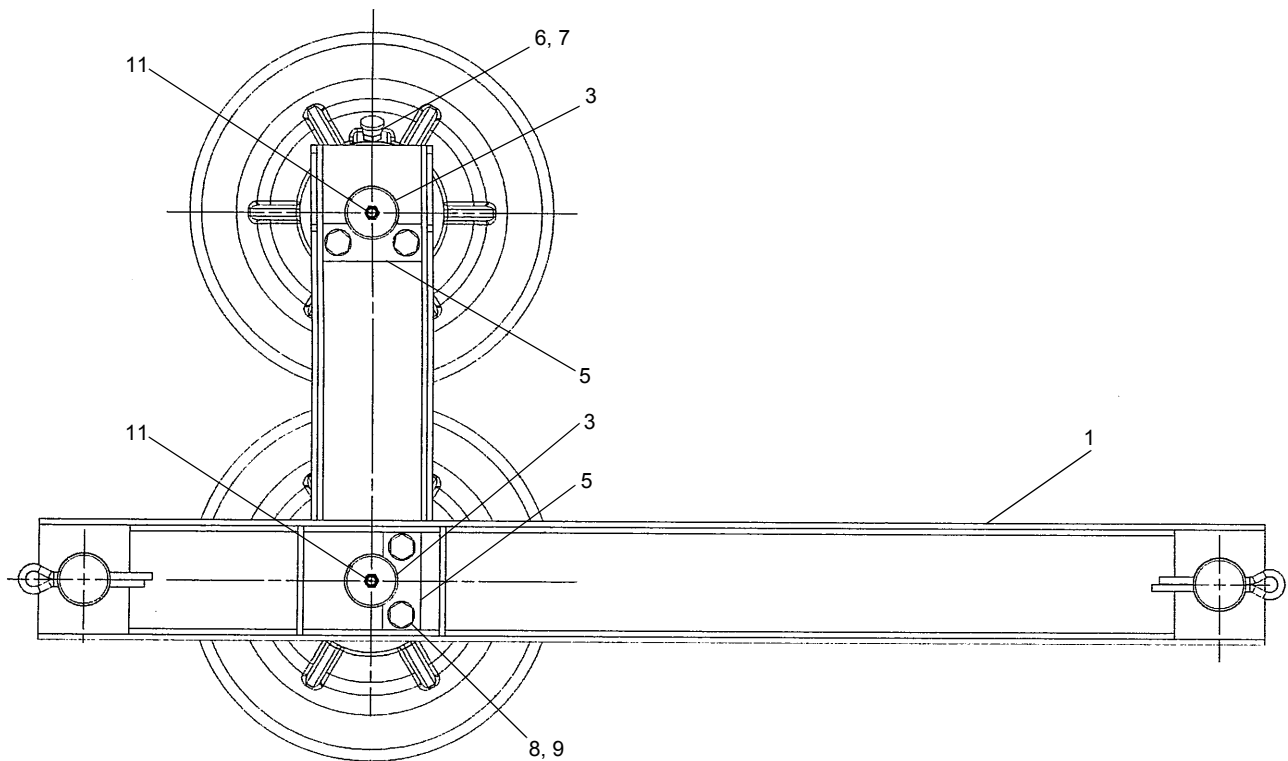
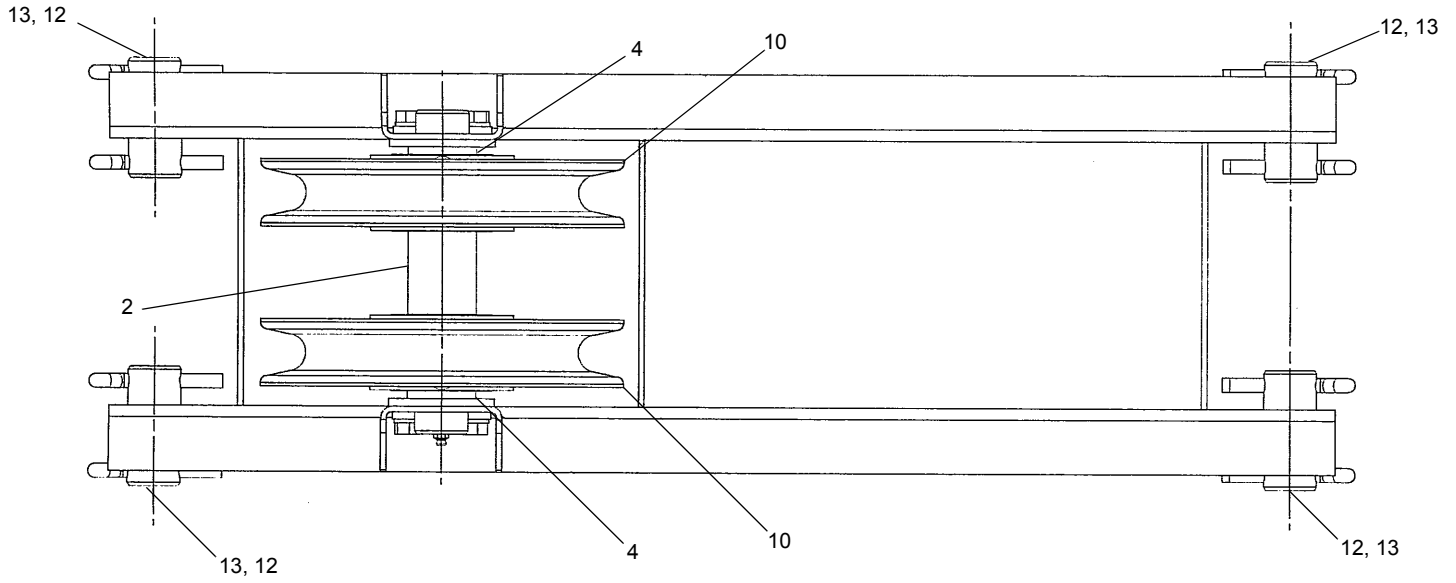
BOOM OUTER WELDMENT 40' 92HI

REV NO. ①
SHEET NO. 9 - 3A

9



Courtesy of Crane.Market



HC275 1189390

IHI

MODEL HC275

GUIDE SHEAVE ASSEMBLY
BOOM OUTER

REV NO. ①
SHEET NO. 9 - 3B

9

Courtesy of Crane.Market

KEY NO	PART NO	DESCRIPTION	QTY
0	X 1189390	Guide Sheave Assembly	
1	1189391	* Guide Sheave Weldment	1
2	436005	* Spacer, Tube	2
3	436006	* Pin	2
4	425885	* Tube	4
5	427364	* Bar, Key	4
6	810460	* Fitting, Lube	4
7	810736	* Cap, HYDR Fitting	4
8	814904	* Screw, Cap Hex Head	8
9	805060	* Washer, Lock	8
10	1101922	* Sheave Assembly	4
11	805010	* Fitting, Lube	2
12	1179732	* Pin, Mounting	4
13	804918	* Pin, Cotter	8

NOTE

IHI

MODEL HC275

GUIDE SHEAVE ASSEMBLY
BOOM OUTER

REV NO. ①
SHEET NO. 9 - 3B

9



Courtesy of Crane.Market

KEY NO	PART NO	DESCRIPTION	QTY
0	X 1101922	Sheave Assembly Part list only	
1*	512363	* Sheave, Wire Rope	1
2*	800065	* BRG, Ball, SGL	2

NOTE : * KEY NOs ARE NOT SHOWN IN ILLUSTRATION

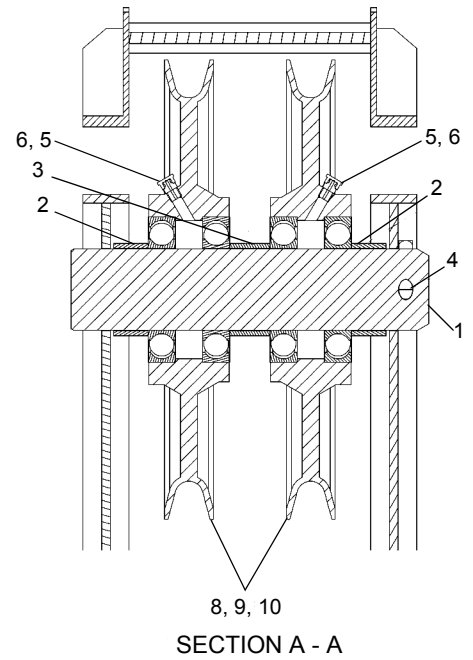
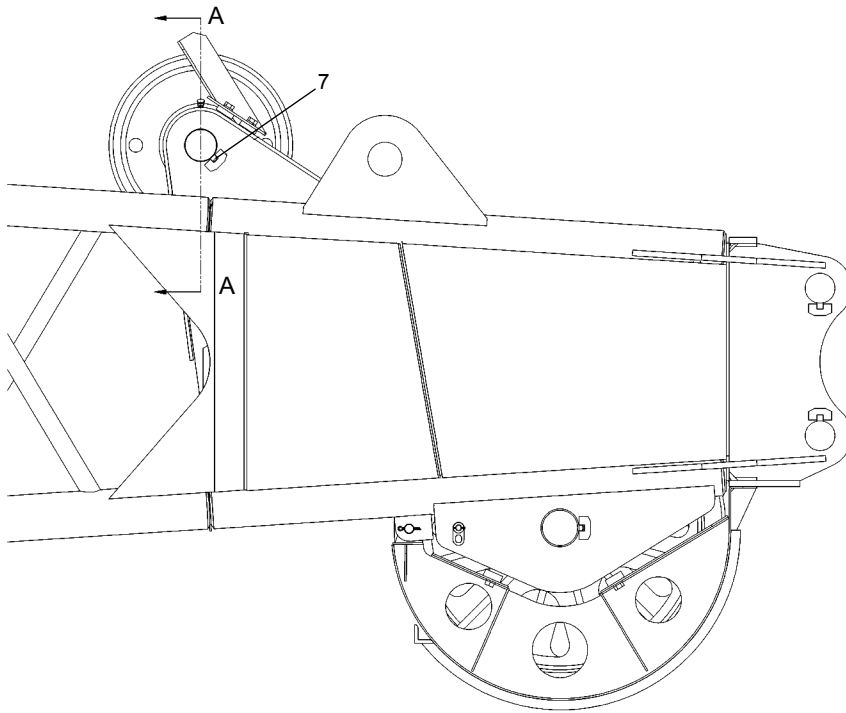
IHI

MODEL HC275

SHEAVE ASSEMBLY PARTS LIST ONLY

REV NO.
 SHEET NO. 9 - 3C





KEY NO	PART NO	DESCRIPTION	QTY
0	X 1189412	Guide Sheave Assembly Boom Outer Lead In	
1	436242	* Pin	1
2	436524	* Spacer, Tube	2
3	436526	* Spacer, Tube	1
4	804926	* Pin, Cotter	1
5	810460	* Fitting, Lube	2
6	810736	* Cap, HYDR Fitting	2
7	813146	* Pin, Grooved	1
8	1101859	* Sheave Assembly	2
9	1104790	* Sheave	1
10	801535	* Bearings	2

NOTE

HC275 1189412

IHI

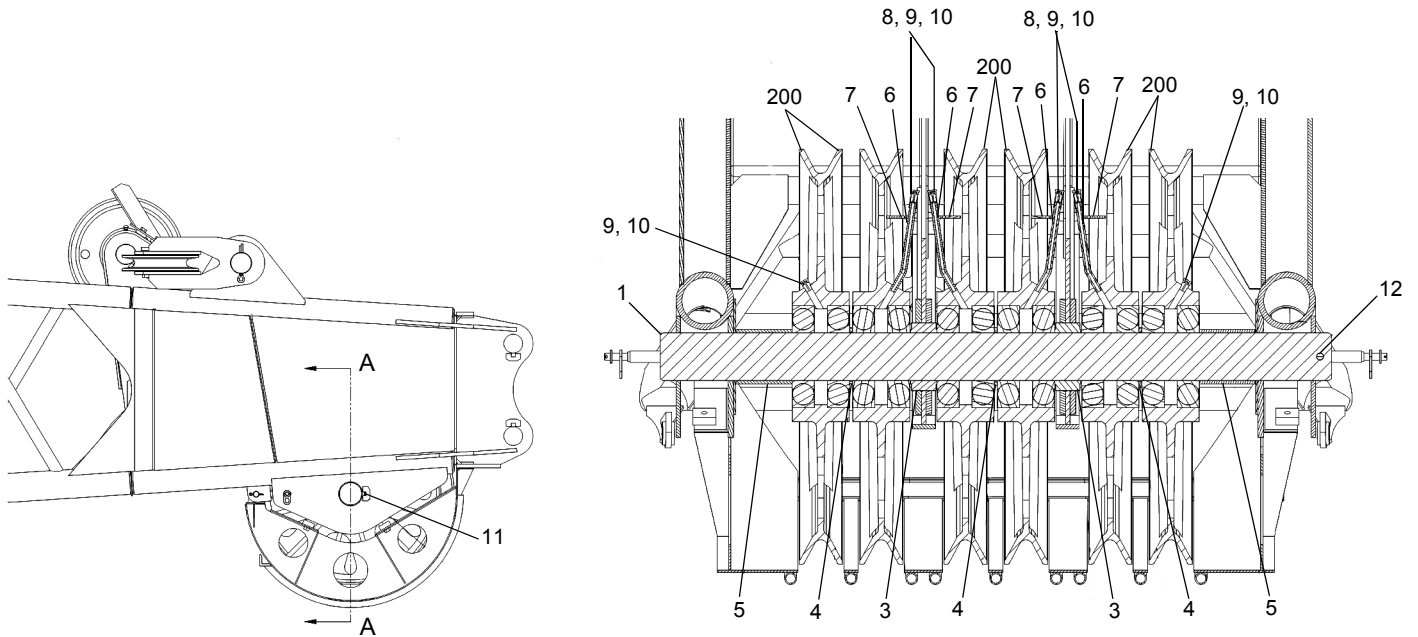
MODEL HC275

GUIDE SHEAVE ASSEMBLY
BOOM OUTER LEAD IN

REV NO. ①
SHEET NO. 9 - 3D

9

Courtesy of Crane.Market



SECTION A - A

KEY NO	PART NO	DESCRIPTION	QTY
0	X 1189413	Boom Point Sheave Assembly	
1	436247	* Pin	1
3	421157	* Spacer, Tube	2
4	421160	* Spacer, Tube	3
5	421161	* Spacer, Tube	2
6	421159	* Pipe, Bent	4
7	420555	* Bar	4
8	800402	* CPLG, Pipe	4
9	810460	* Fitting, Lube	6
10	810736	* Cap, HYDR Fitting	6
11	813146	* Pin, Grooved	1
12	804926	* Pin, Cotter	1
200	1101937	* Sheave Assembly	6
201*	601761	* Sheave	1
202*	810112	* Bearing	2

NOTE: * KEY NOS 201 & 202 ARE NOT SHOWN IN THE ILLUSTRATION.

HC275 1189413

IHI

BOOM POINT SHEAVE ASSEMBLY

9

MODEL HC275

REV NO. ①
SHEET NO. 9 - 3E

Courtesy of Crane.Market


KEY NO	PART NO	DESCRIPTION	QTY
0	X 1189095	Dead End, UNIV. W/Wedge & Socket	
2*	1189094	* Link WLDT. Rope Wedge & Socket	1
3*	1108192	* Pin Clevis	1
4*	804917	* Pin, Cotter	1
5*	815316	* Socket, Wedge	1

NOTE : * KEY NOs ARE NOT SHOWN IN ILLUSTRATION

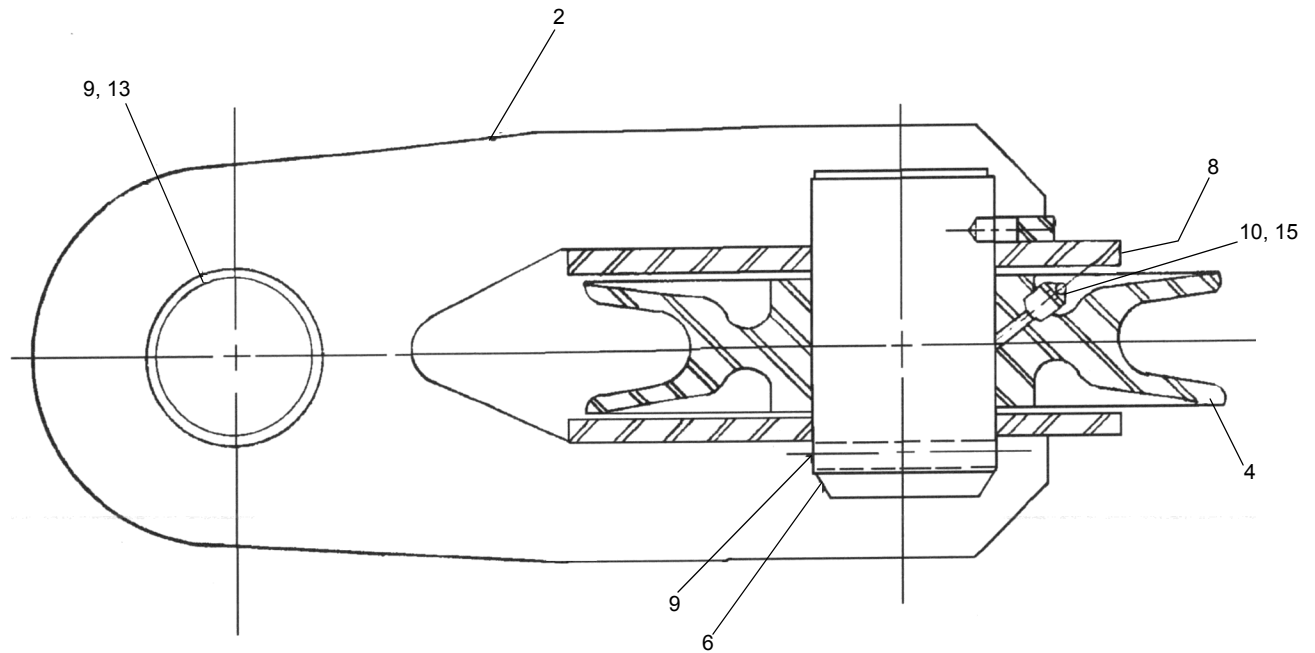
IHI

MODEL HC275

DEAD END, UNIVERSAL PARTS
LIST ONLY

REV NO. 
SHEET NO. 9 - 3F





KEY NO	PART NO	DESCRIPTION	QTY
0	X 615850*	Equalizer Assembly	
2	516563	* Equalizer Weldment	1
4	505380	* Sheave, Wire Rope	1
6	436019	* Pin	1
8	813146	* Pin, Grooved	1
9	804926	* Pin, Cotter	3
10	813164	* Fitting, Lube	1
13	436394	* Pin, 2 Cotter	1
15	810736	* Cap, HYDR Fitting	1

NOTE : * THIS ASSEMBLY IS USED ON 92HI & 77HI BOOM

HC275 615850

IHI

MODEL HC275

EQUALIZER ASSEMBLY

REV NO. ①
SHEET NO. 9 - 3G

9

Courtesy of Crane.Market

KEY NO	PART NO	DESCRIPTION	QTY
0	X 476050	Boom Point Sheave Assembly	
1*	1189095	* End, Dead UNIV.W/Wedge & Socket	1
2*	436634	* Plate, Name Installation	1
3*	518827	* Sheave Modification	1
4*	615665	* Guide Sheave Assembly	1
5*	615724	* Guide Sheave Assembly	1
6*	713867	* Boom Point	1
7*	714031	* Sheave Guard	1
8*	721589	* Boom Outer Section (40FT 92 HI)	1

NOTE : * KEY NOs ARE NOT SHOWN IN ILLUSTRATION

IHI

MODEL HC275

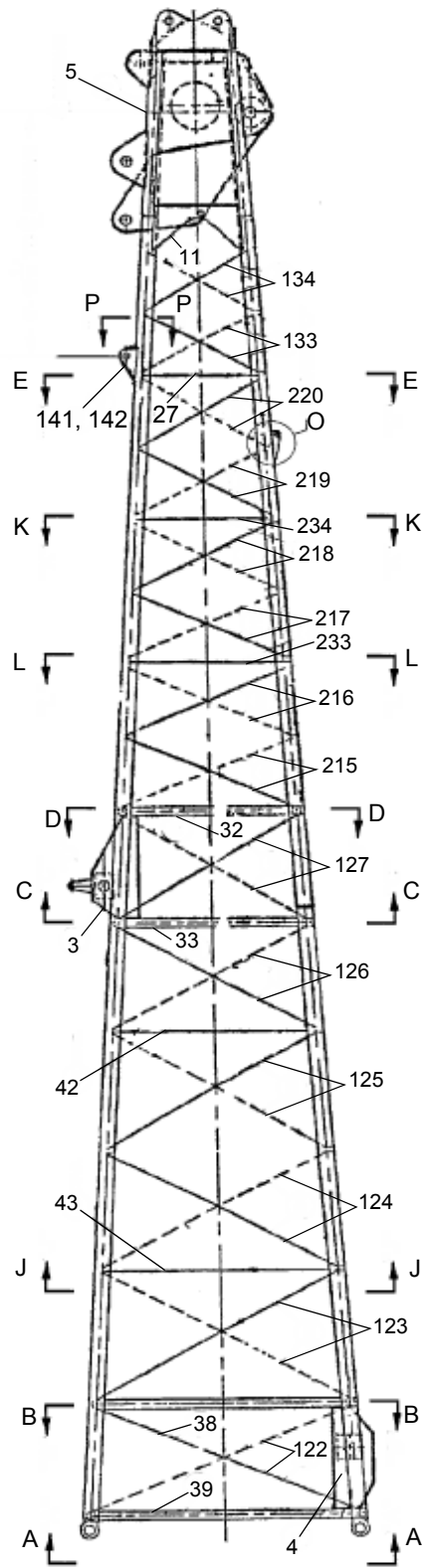
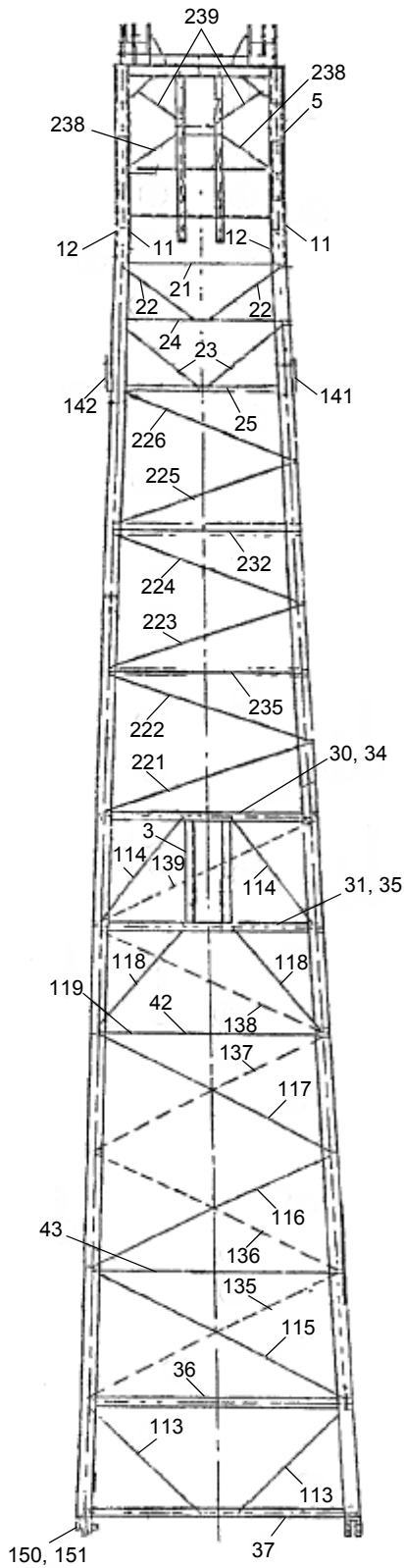
BOOM OUTER ASSEMBLY 40' 92H
PL ONLY

REV NO. ①
SHEET NO. 9 - 4

9



Courtesy of Crane.Market



HC275 721589

IHI

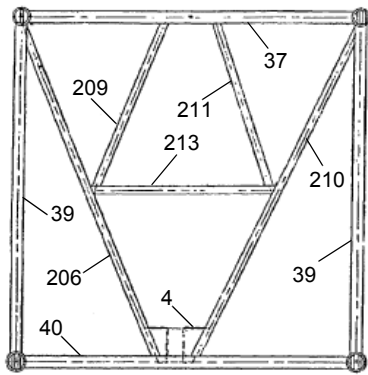
BOOM OUTER WELDMENT 40' 92HI

9

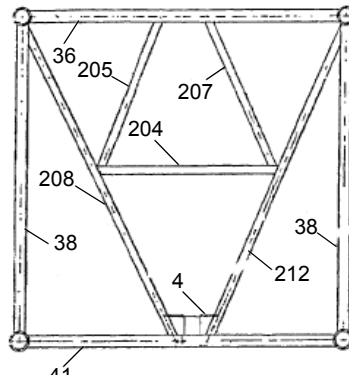
MODEL HC275

REV NO. ①
SHEET NO. 9 - 4A

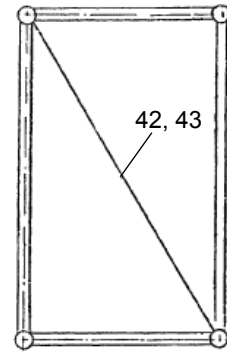
Courtesy of Crane.Market



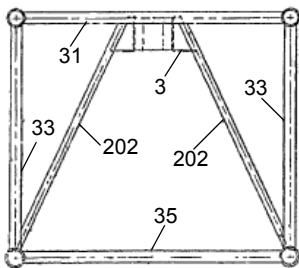
VIEW A - A



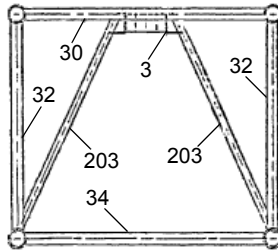
SECTION B - B



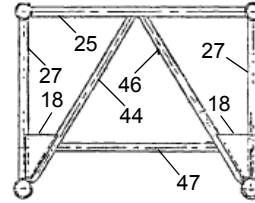
SECTION J - J



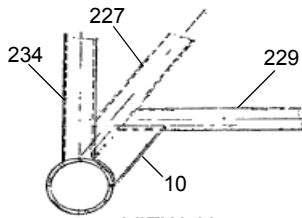
SECTION C - C



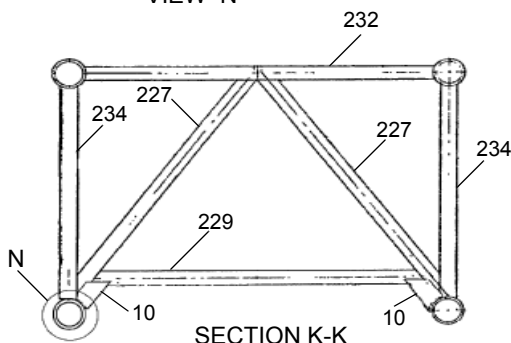
SECTION D - D



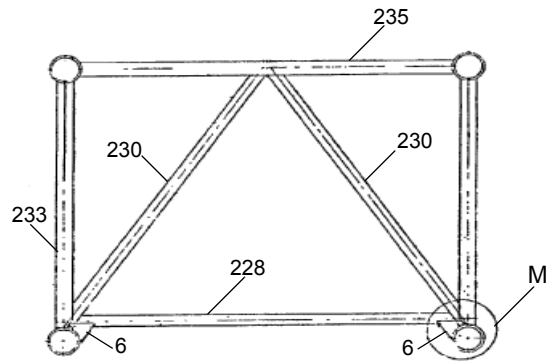
SECTION E - E



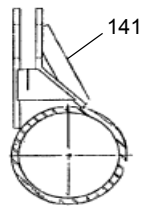
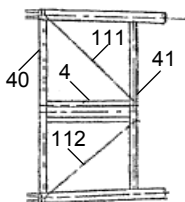
VIEW N



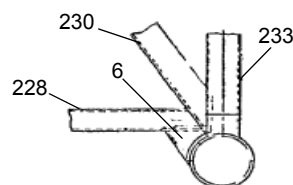
SECTION K - K



SECTION L - L



SECTION P - P



VIEW M



VIEW O

HC275 721589

IHI

BOOM OUTER WELDMENT 40' 92HI

9

MODEL HC275

REV NO. ①
SHEET NO. 9 - 4A

Courtesy of Crane.Market

KEY NO	PART NO	DESCRIPTION	QTY
0	X 721589	92H Boom Outer 40 FT	
3	615672	* Bracket Weldment Sheave Boom Tip	1
4	615670	* Bracket Weldment Sheave Outer	1
5	716071	* Boom Tip Weldment	1
6	438241	* Stiffener Weldment	2
10	438242	* Stiffener Weldment	2
11	436210	* Plate	2
12	436152	* Plate	2
18	465675	* Sheet	4
21	467865	* Tube, Lacing	1
22	467868	* Tube, Lacing	2
23	467869	* Tube, Lacing	2
24	467866	* Tube, Lacing	1
25	467867	* Tube, Lacing	1
27	467870	* Tube, Lacing	2
30	436319	* Tube, Lacing	1
31	436320	* Tube, Lacing	1
32	436323	* Tube, Lacing	2
33	436324	* Tube, Lacing	2
34	436327	* Tube, Lacing	1
35	436328	* Tube, Lacing	1
36	436321	* Tube, Lacing	1
37	436322	* Tube, Lacing	1
38	436325	* Tube, Lacing	2
39	436326	* Tube, Lacing	2
40	436330	* Tube, Lacing	1
41	436329	* Tube, Lacing	1
42	467871	* Tube, Lacing	1
43	467872	* Tube, Lacing	1

NOTE

IHI

MODEL HC275

BOOM OUTER WELDMENT 40' 92HI

REV NO. ①
SHEET NO. 9 - 4A

9



Courtesy of Crane.Market

KEY NO	PART NO	DESCRIPTION	QTY
44	467873	* Tube, Lacing	1
46	467874	* Tube, Lacing	1
47	467875	* Tube, Lacing	1
111	467876	* Tube, Lacing	1
112	467877	* Tube, Lacing	1
113	467878	* Tube, Lacing	2
114	1103246	* Tube, Lacing	2
115	467880	* Tube, Lacing	1
116	467881	* Tube, Lacing	1
117	467882	* Tube, Lacing	1
118	1103329	* Tube, Lacing	2
119	1103910	* Tube, Lacing	1
122	467884	* Tube, Lacing	2
123	467885	* Tube, Lacing	2
124	467886	* Tube, Lacing	2
125	467887	* Tube, Lacing	2
126	467888	* Tube, Lacing	2
127	467889	* Tube, Lacing	2
133	467890	* Tube, Lacing	2
134	468355	* Tube, Lacing	2
135	467892	* Tube, Lacing	1
136	467893	* Tube, Lacing	1
137	467894	* Tube, Lacing	1
138	467895	* Tube, Lacing	1
139	467896	* Tube, Lacing	1
141	527430	* Ear Weldment RH, 75 Ton Jib Stop	1
142	527431	* Ear Weldment LH, 75 Ton Jib Stop	1
150	410556	* Pin, Headed	4
151	804919	* Pin, Cotter	4

NOTE

IHI

MODEL HC275

BOOM OUTER WELDMENT 40' 92HI

REV NO. ^⓪
SHEET NO. 9 - 4A

9



Courtesy of Crane.Market


KEY NO	PART NO	DESCRIPTION	QTY
202	436595	* Tube, Lacing	2
203	436694	* Tube, Lacing	2
204	436695	* Tube, Lacing	1
205	436696	* Tube, Lacing	1
206	436697	* Tube, Lacing	1
207	436698	* Tube, Lacing	1
208	436699	* Tube, Lacing	1
209	437076	* Tube, Lacing	1
210	437077	* Tube, Lacing	1
211	437078	* Tube, Lacing	1
212	437091	* Tube, Lacing	1
213	437092	* Tube, Lacing	1
215	467897	* Tube, Lacing	2
216	467970	* Tube, Lacing	2
217	468350	* Tube, Lacing	2
218	468358	* Tube, Lacing	2
219	468359	* Tube, Lacing	2
220	468360	* Tube, Lacing	2
221	467971	* Tube, Lacing	1
222	467972	* Tube, Lacing	1
223	467973	* Tube, Lacing	1
224	467974	* Tube, Lacing	1
225	467975	* Tube, Lacing	1
226	467976	* Tube, Lacing	1
227	467977	* Tube, Lacing	2
228	467978	* Tube, Lacing	1
229	467979	* Tube, Lacing	1
230	467980	* Tube, Lacing	2
232	467982	* Tube, Lacing	1

NOTE

IHI

MODEL HC275

BOOM OUTER WELDMENT 40' 92HI

REV NO. 
SHEET NO. 9 - 4A

9



Courtesy of Crane.Market

KEY NO	PART NO	DESCRIPTION	QTY
233	467983	* Tube, Lacing	2
234	467984	* Tube, Lacing	2
235	467981	* Tube, Lacing	1
237	470484	* Bracket Weldment	2
238	467996	* Tube, Lacing	2
239	1106475	* Tube, Lacing	2

NOTE

IHI

MODEL HC275

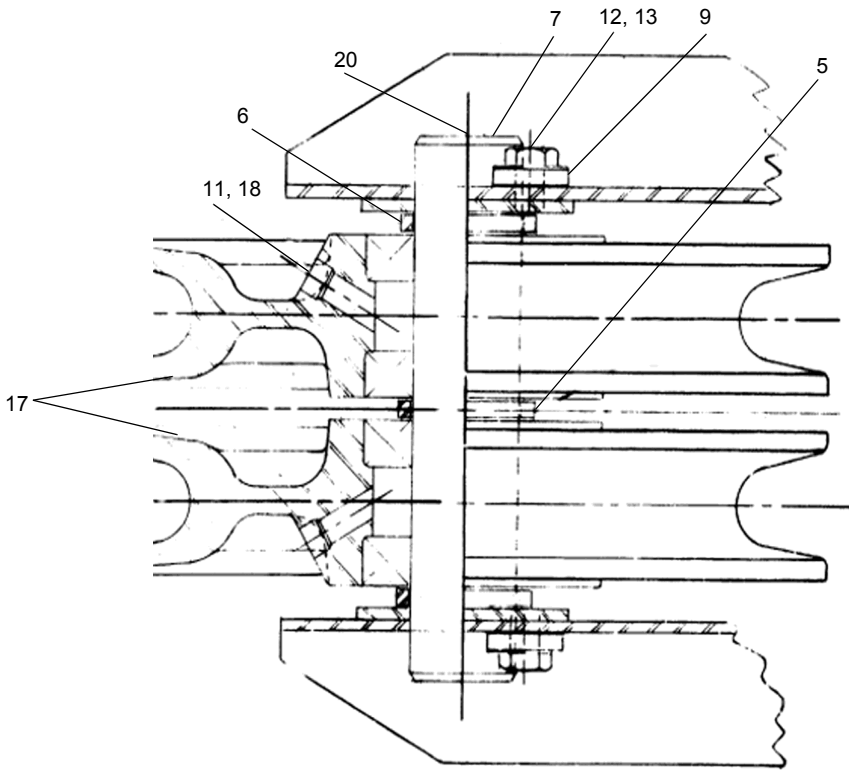
BOOM OUTER WELDMENT 40' 92HI

REV NO. ⁰
 SHEET NO. 9 - 4A

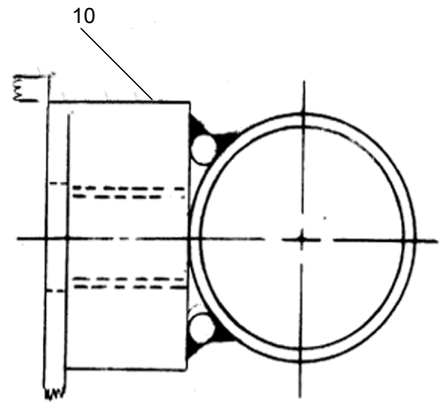
9



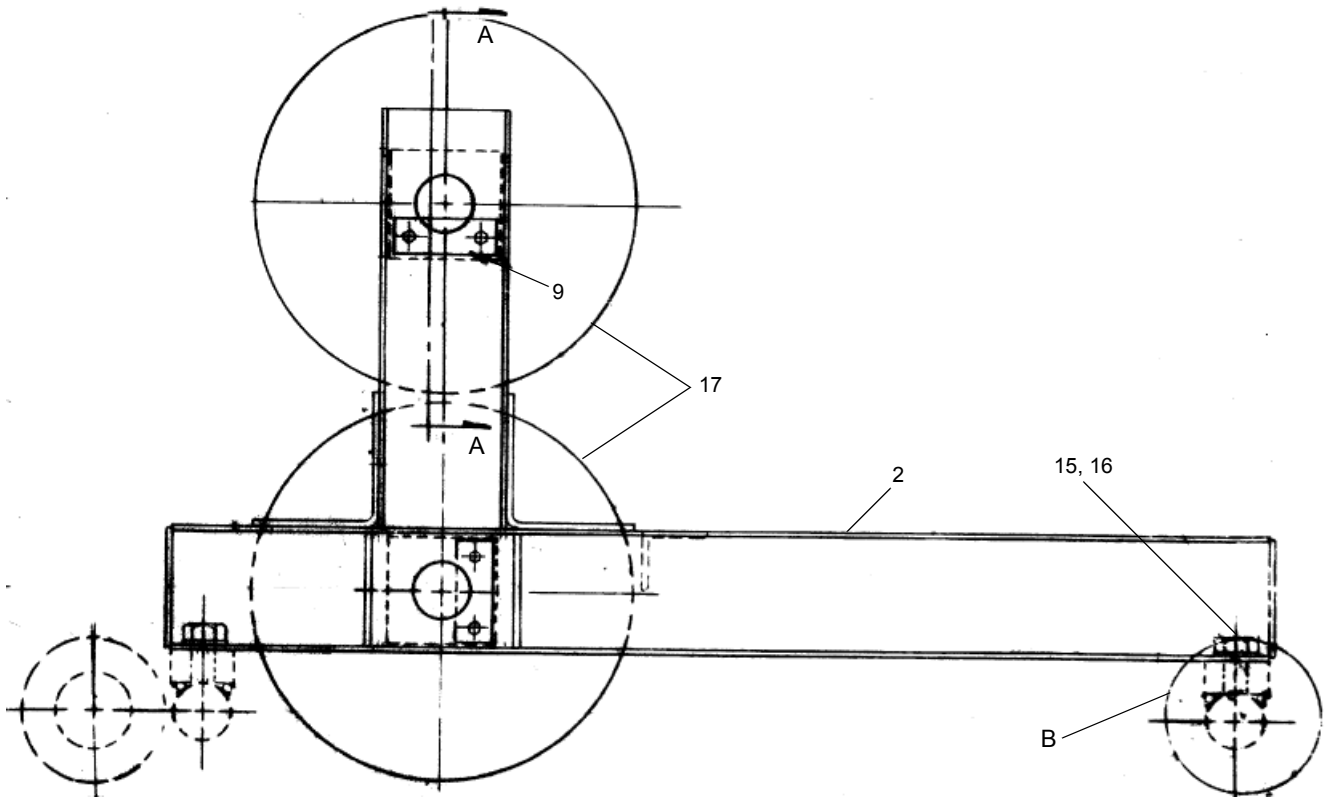
Courtesy of Crane.Market



SECTION A-A



DETAIL B



HC275 615665

IHI

MODEL HC275

GUIDE SHEAVE ASSEMBLY
BOOM OUTER

REV NO. ①
SHEET NO. 9 - 4B

9

Courtesy of Crane.Market

KEY NO	PART NO	DESCRIPTION	QTY
0	X 615665	Guide Sheave Assembly	
2	615664	* SPRT WLDT Guide Sheave Assembly	1
5	436005	* Spacer.Tube	2
6	425885	* Tube	4
7	436006	* Pin	2
8*	456404	* Bar.Round	8
9	427364	* Bar, Key	4
10	421269	* Pad, Mounting	4
11	810460	* Fitting, Lube SAE	4
12	814904	* SCR, Cap HXHD	8
13	805060	* Washer, Lock	8
15	814651	* SCR, Cap	4
16	805063	* Washer, Lock	4
17	1101922	* Sheave Assembly	4
18	810736	* Cap, HYDR Fitting	4
20	805010	* Fitting, Lube SAE	2

NOTE : * KEY NO 8 IS NOT SHOWN IN THE ILLUSTRATION

IHI

MODEL HC275

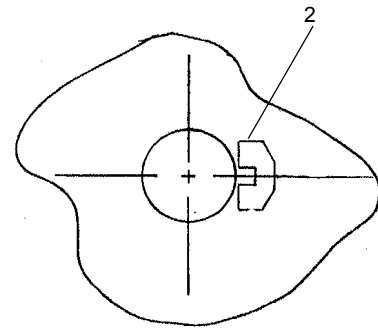
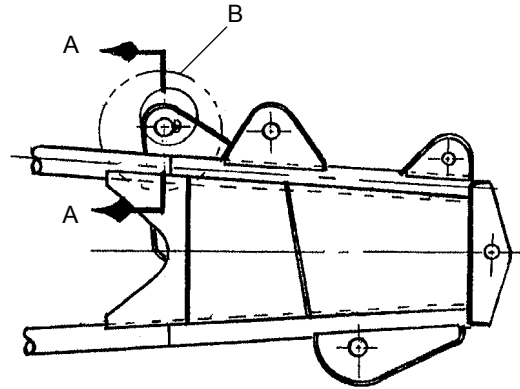
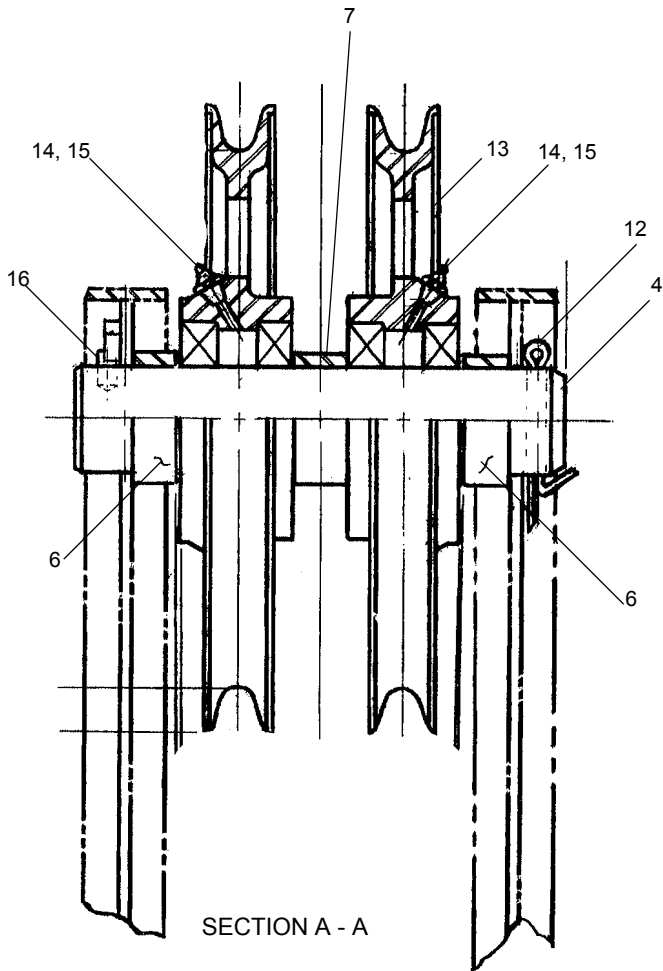
GUIDE SHEAVE ASSEMBLY
BOOM OUTER

REV NO. ①
SHEET NO. 9 - 4B

9



Courtesy of Crane.Market



HC275 615724

IHI

MODEL HC275

GUIDE SHEAVE ASSEMBLY
BOOM OUTER LEAD IN

REV NO. ①
SHEET NO. 9 - 4C

9

Courtesy of Crane.Market

KEY NO	PART NO	DESCRIPTION	QTY
0	X 615724	Guide Sheave Assembly	
2	409332	* Bar, Lock	1
4	436242	* Pin	1
6	436524	* Spacer, Tube	2
7	436526	* Spacer, Tube	1
12	804926	* Pin, Cotter	1
13	1101859	* Sheave Assembly	2
14	810460	* Fitting, Lube SAE	2
15	810736	* Cap, HYDR Fitting	2
16	813146	* Pin, Grooved	1

NOTE :

IHI

MODEL HC275

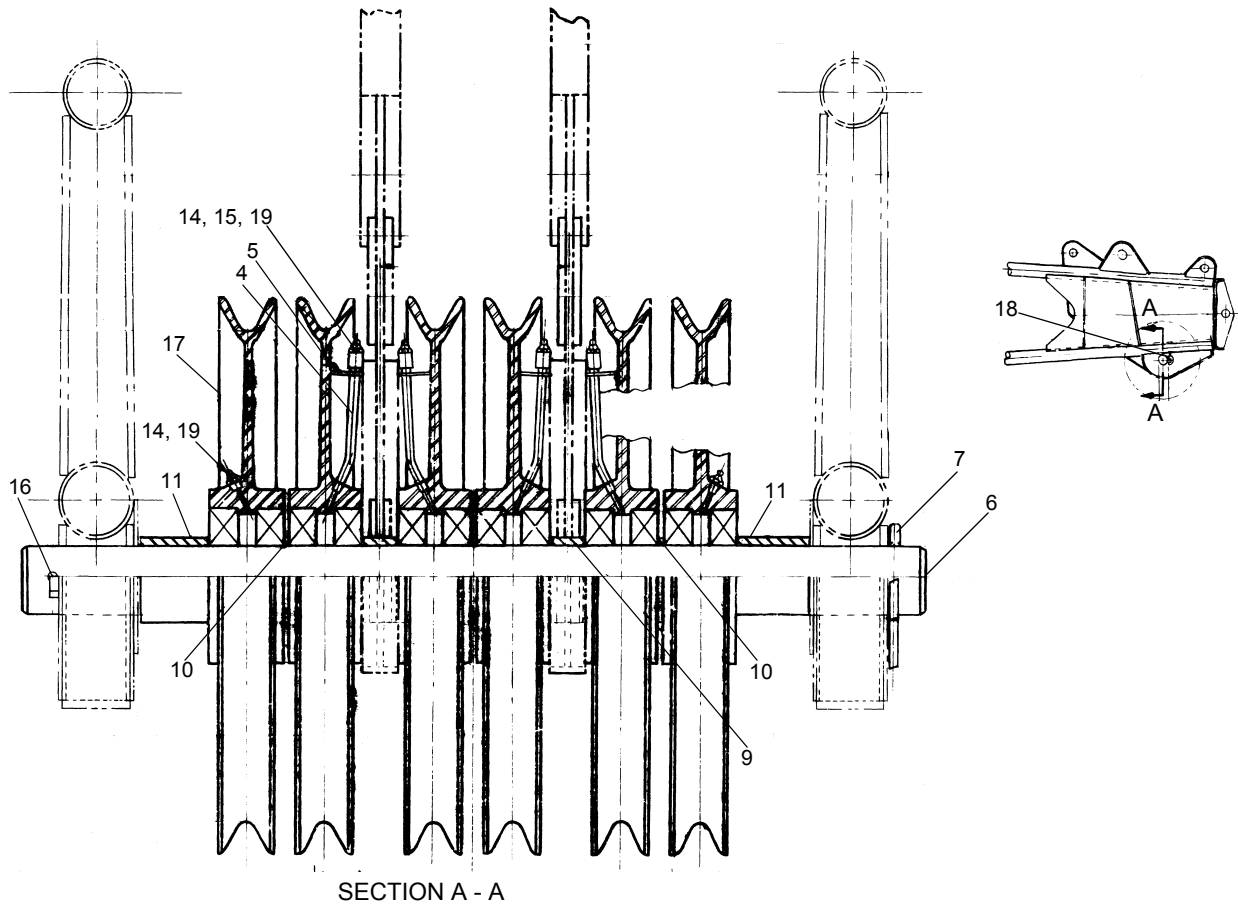
GUIDE SHEAVE ASSEMBLY
BOOM OUTER LEAD IN

REV NO. ^⓪
SHEET NO. 9 - 4C

9



Courtesy of Crane.Market



HC275 713867

IHI

MODEL HC275

BOOM POINT SHEAVE ASSEMBLY

9

REV NO. ①
SHEET NO. 9 - 4D

□

Courtesy of Crane.Market

KEY NO	PART NO	DESCRIPTION	QTY
0	X 713867	Boom Point Sheave Assembly	
4	421159	* Pipe, Bent	4
5	420555	* Bar	4
6	436247	* Pin, DWL/COT	1
7	804926	* Pin, Cotter	1
9	421157	* Spacer, Tube	2
10	421160	* Spacer, Tube	3
11	421161	* Spacer, Tube	2
14	810460	* Fitting, Lube SAE	6
15	800402	* CPLG, Pipe	4
16	813146	* Pin, Grooved	1
17	1101937	* Sheave Assembly	6
18	409332	* Bar, Lock	1
19	810736	* Cap, HYDR Fitting	6

NOTE

IHI

MODEL HC275

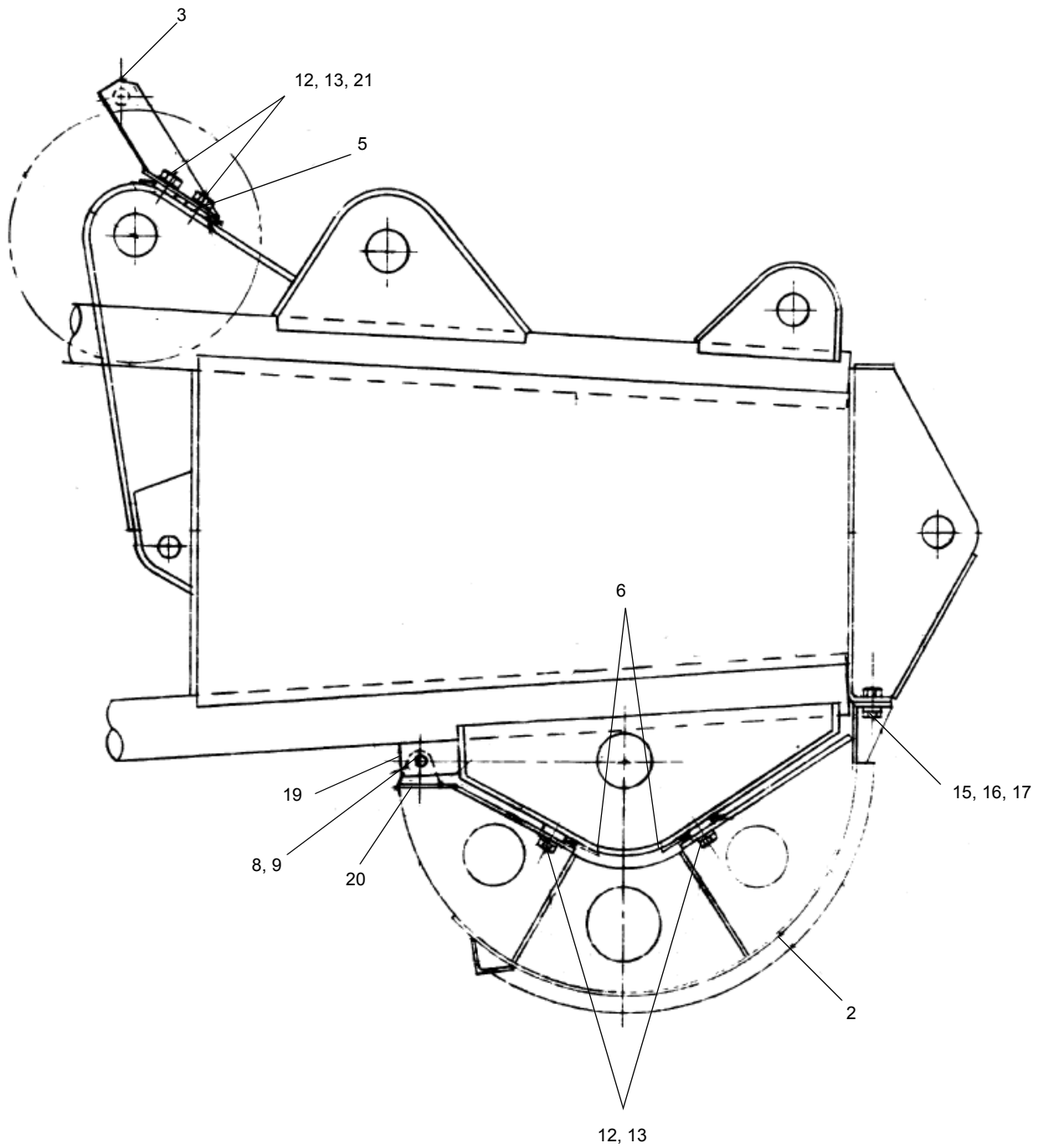
BOOM POINT SHEAVE ASSEMBLY

REV NO. ⁰
SHEET NO. 9 - 4D

9



Courtesy of Crane.Market



HC275 714031

IHI

MODEL HC275

SHEAVE GUARD ASSEMBLY

9

REV NO. ①
SHEET NO. 9 - 4E

□

Courtesy of Crane.Market

KEY NO	PART NO	DESCRIPTION	QTY
0	X 714031	Sheave Guard	
2	615608	* Sheave Guard	1
3	615877	* Sheave Guard Weldment	1
5	436527	* Pad, Mounting	4
6	M 4797	* Pad, Mounting	4
8	804890	* Pin, Cotter	4
9	L 4499A	* Pin, 2 Cotter	2
12	806870	* SCR, CAP	8
13	805062	* Washer, Lock	8
15	807828	* SCR, Cap	3
16	814786	* Nut, HEX	3
17	805063	* Washer, Lock	3
19	447486	* Plate	4
20	463669	* Plate, Ear	2
21	805075	* Washer, Round	4

NOTE :

IHI

MODEL HC275

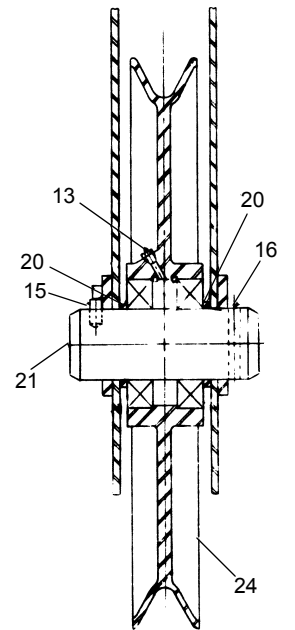
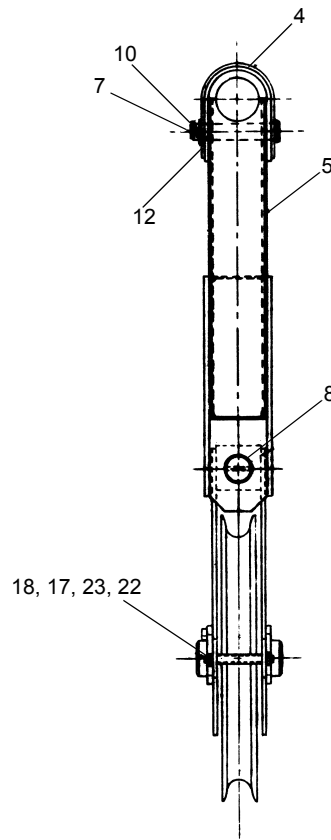
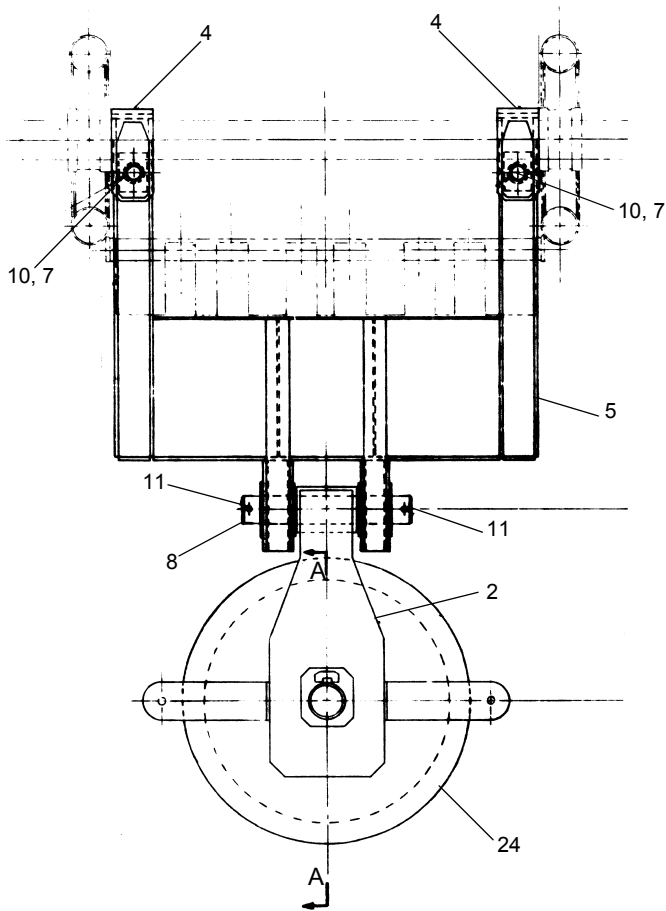
SHEAVE GUARD ASSEMBLY

REV NO. ①
SHEET NO. 9 - 4E

9



Courtesy of Crane.Market



SECTION A-A

HC275 715633

IHI

MODEL HC275

HANGER BLOCK ASSEMBLY
FOR 14 PARTS OF LINE

REV NO. ①
SHEET NO. 9 - 5

9

Courtesy of Crane.Market

KEY NO	PART NO	DESCRIPTION	QTY
0	X 715633	Hanger Block Assembly	
2	617573	* Hanger Block Weldment	1
4	510199	* Hanger Block Weldment	2
5	708490	* Frame WLDT	1
7	421186	* Pin, Headed	2
8	421187	* Pin, Cotter	1
10	804918	* Pin, Cotter	2
11	804925	* Pin, Cotter	2
12	810100	* Washer, Flat Machinery & SHG	6
13	810460	* Fitting, Lube SAE	1
15	813146	* Pin, Grooved	1
16	804926	* Pin, Cotter	1
17	814786	* Nut, HEX	2
18	805063	* Washer, Lock	2
20	440455	* Tube	2
21	440443	* Pin, DWL/COT	1
22	1053983	* SCR, Cap, HEX	2
23	452212	* Pipe, No THD	2
24	1101851	* Sheave Assembly	1

NOTE

IHI

MODEL HC275

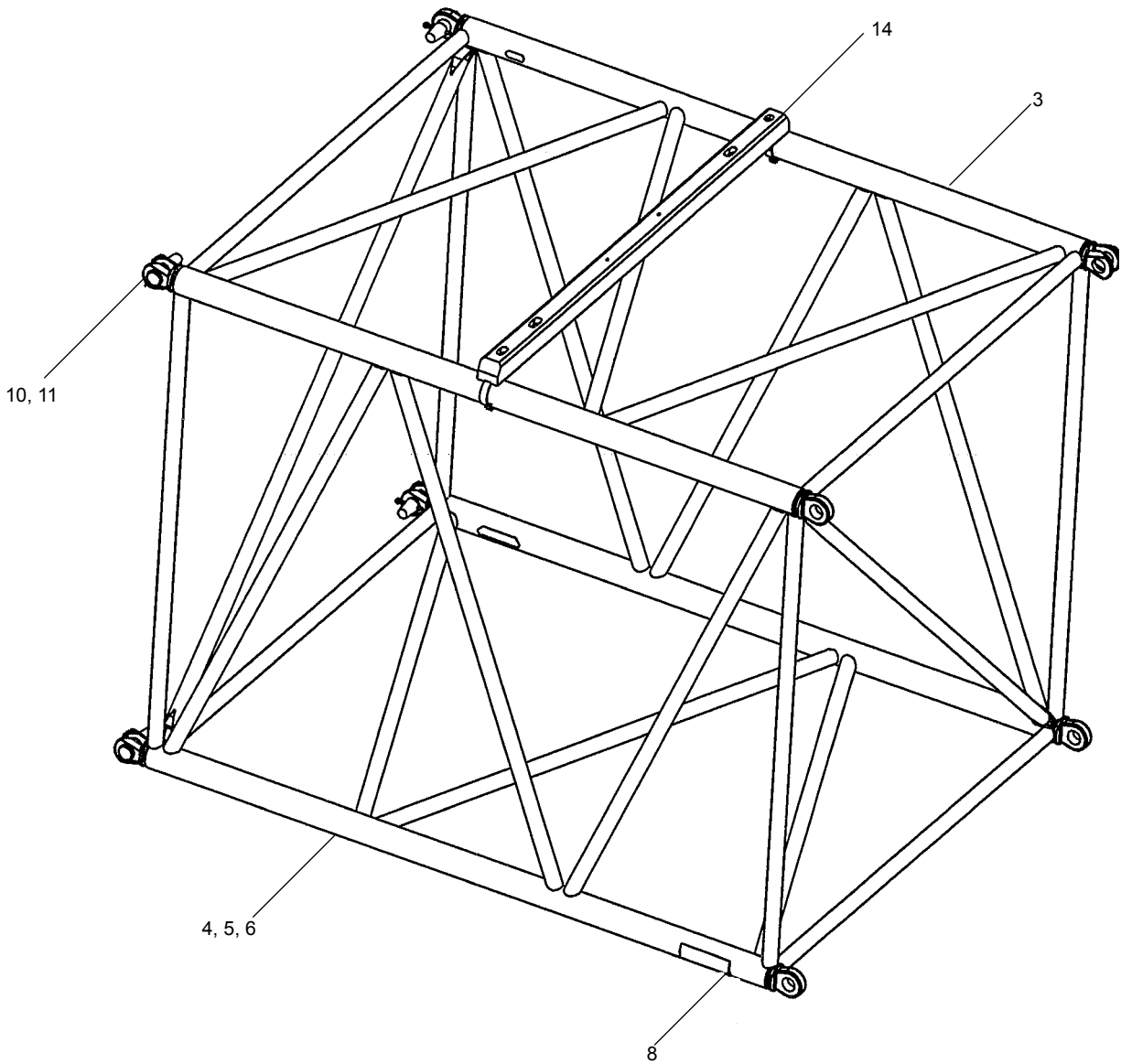
HANGER BLOCK ASSEMBLY
FOR 14 PARTS OF LINE

REV NO. ①
SHEET NO. 9 - 5

9



Courtesy of Crane.Market



HC275 1078215

IHI

MODEL HC275

BOOM CENTER ASSEMBLY 10' 92ST

REV NO. ①
 SHEET NO. 9 - 6

9



Courtesy of Crane.Market

KEY NO	PART NO	DESCRIPTION	QTY
0	X 1078215	Boom Center Section 92ST 10'	
2*	1077993	* Paint, & Decal Tubular Booms	1 STY
3	723323	* Boom Center Section(10' 92ST)	1
4	1045331	* Paint, Enamel; Black, Air Dry Enamel. ALKYD	2 GAL
5	1106349	* Solvents, Reducing; SEE D055 SPECS	0.5 GAL
6	1106553	* Paint, Primer Buff, Air Dry Primer ALKYD	2 GAL
8	1078048	* Label, Name; Warning-Boom	2
10	410556	* Pin, Headed	4
11	804919	* Pin, Cotter	4
14	1189200	* Installation, Timber(92" Boom & 4.50" Chord)	1

NOTE : * KEY NO 2 IS NOT SHOWN IN THE ILLUSTRATION

IHI

MODEL HC275

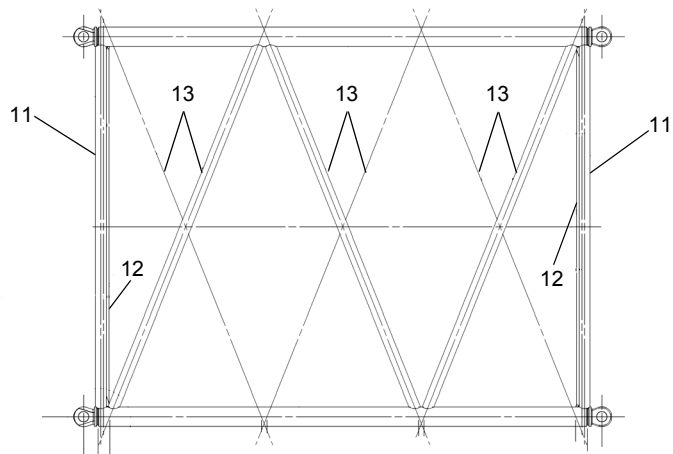
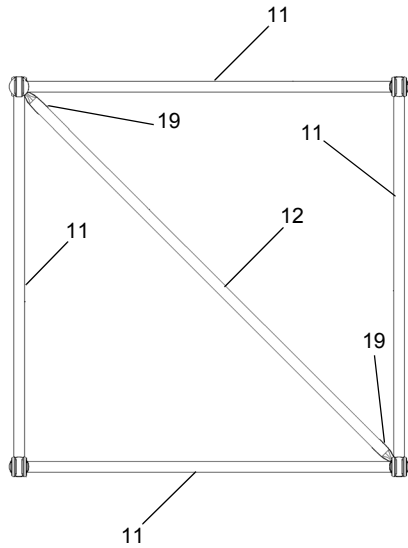
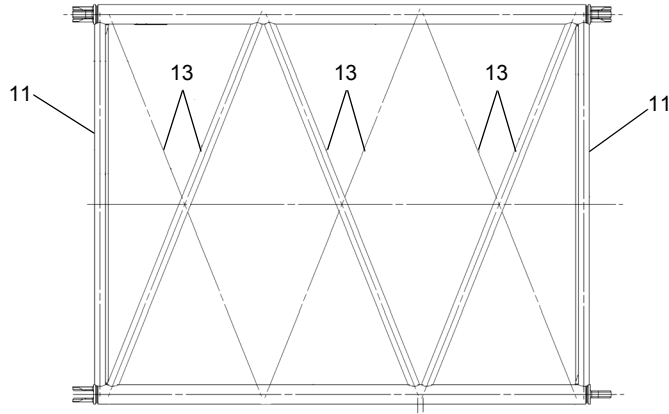
BOOM CENTER ASSEMBLY 10' 92ST

REV NO. ①
SHEET NO. 9 - 6

9



Courtesy of Crane.Market



KEY NO	PART NO	DESCRIPTION	QTY
0	X 723323	Boom Center Section	
11	474227	* Tube, Lacing	8
12	474228	* Tube, Lacing	2
13	474229	* Tube, Lacing	12
19	451097	* Sheet	8

NOTE

HC275 723323

IHI

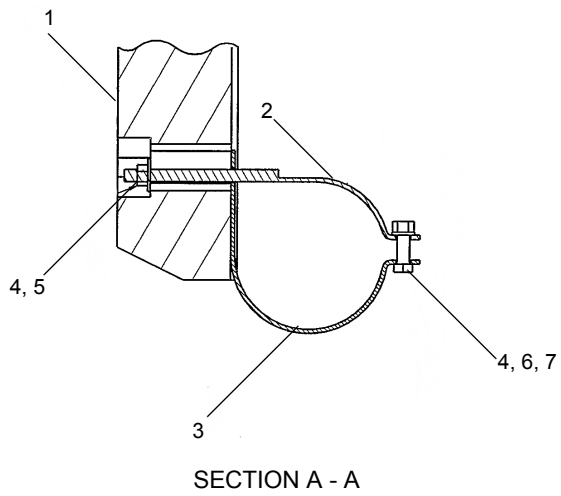
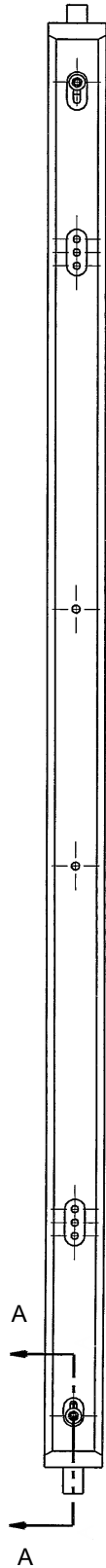
BOOM CENTER WELDMENT 10' 92ST

9

MODEL HC275

REV NO. ①
SHEET NO. 9 - 6A

Courtesy of Crane.Market



HC275 1189200

IHI

MODEL HC275

TIMBER INSTALLATION
92" BOOM WITH 4.5" CHORD

REV NO. ①
SHEET NO. 9 - 7

9

Courtesy of Crane.Market

KEY NO	PART NO	DESCRIPTION	QTY
0	X 1189200	Installation, Timber (92" Boom & 4.50" Chord)	
1	1186332	* Timber	1
2	1179975	* Weldment, Tie Rod	2
3	413482	* Bar, Bent	2
4	814654	* Nut, HEX	4
5	804470	* Washer, Flat	2
6	805058	* Washer, Lock	2
7	809833	* SCR, Cap HXHD	2

NOTE

IHI

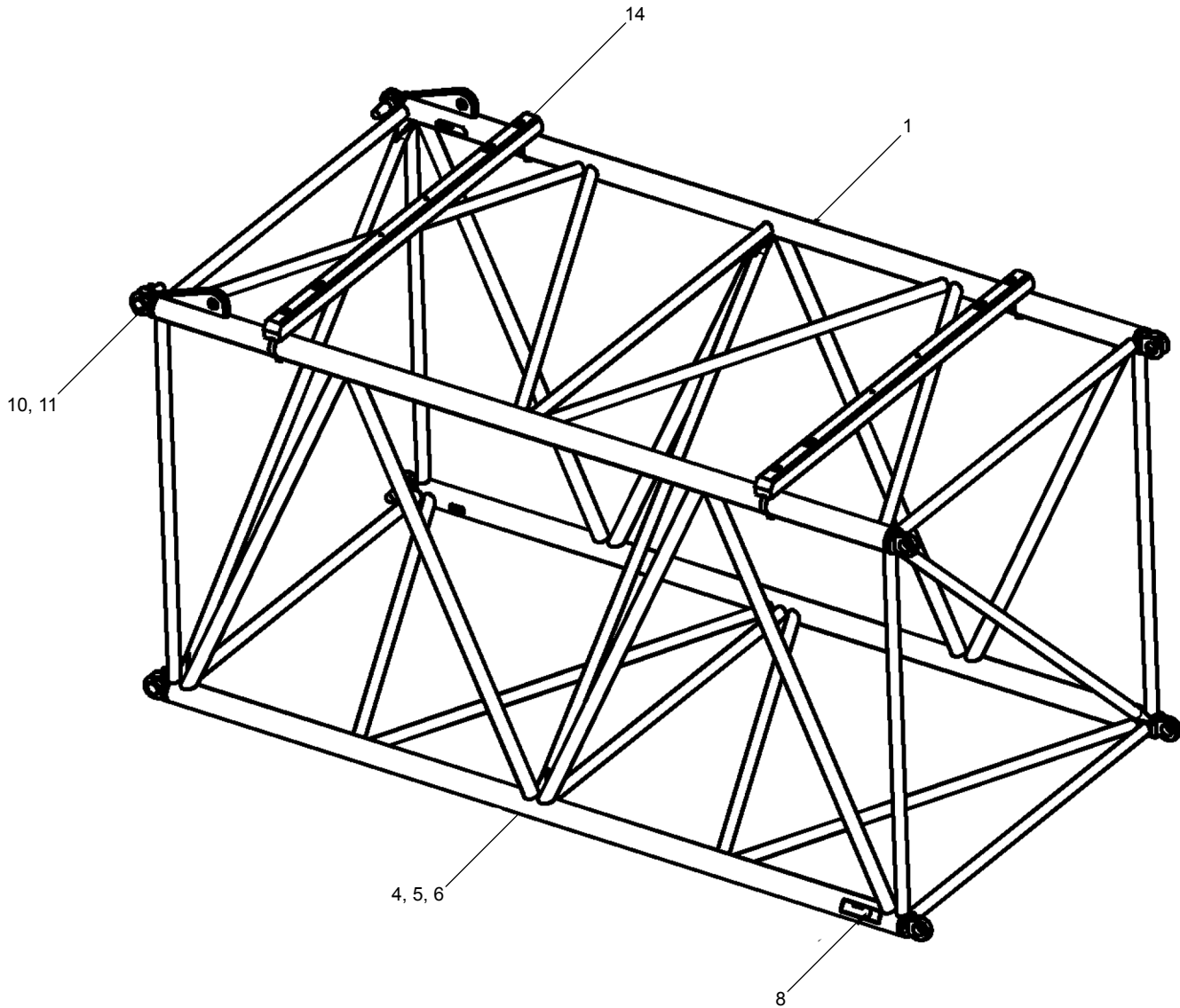
MODEL HC275

TIMBER INSTALLATION
92" BOOM WITH 4.5" CHORD

REV NO. ①
SHEET NO. 9 - 7

9





HC275 1188636

IHI

MODEL HC275

BOOM CENTER ASSEMBLY 15' 92HI

REV NO. ①
SHEET NO. 9 - 8

9



Courtesy of Crane.Market

KEY NO	PART NO	DESCRIPTION	QTY
0	X 1188636	Boom Center, 92HI 15	
1	1188633	* Boom Center Weldment (15' 92HI)	1
2*	1077993	* Paint & Decal Tubular Booms	1 STY
4	1045331	* Paint, Enamel Black Air-dry Enamel, ALKYD	4 GAL
5	1106349	* Solvents, Reducing See D055 Specs.	1 GAL
6	1106553	* Paint, Primer Buff Air-dry Primer, ALKYD	4 GAL
8	1078048	* Label, Name Warning Boom	2
10	410556	* Pin, Headed	4
11	804919	* Pin, Cotter	4
14	1187248	* Installation, Timber (92" Boom & 5.00" Chord)	2

NOTE : * KEY NO 2 IS NOT SHOWN IN THE ILLUSTRATION

IHI

MODEL HC275

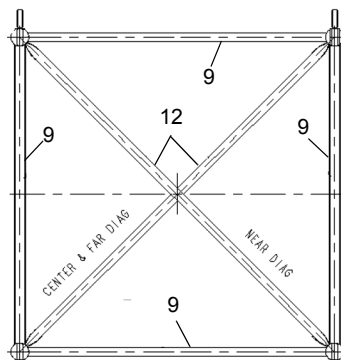
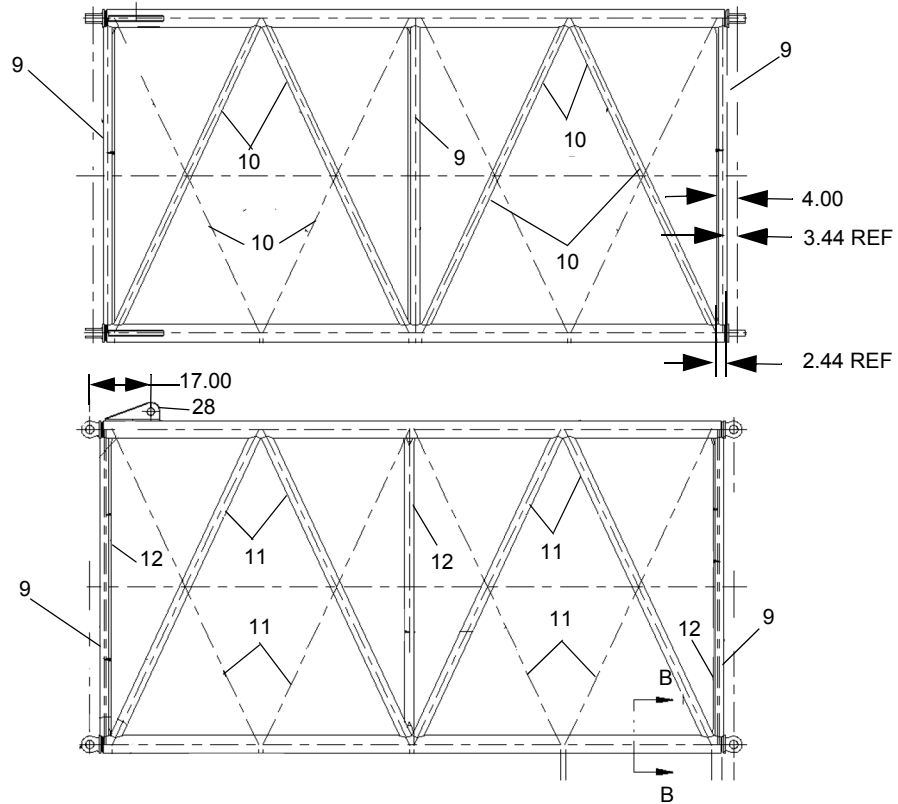
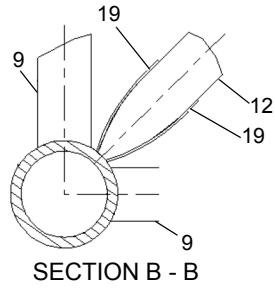
BOOM CENTER ASSEMBLY 15' 92HI

REV NO. ①
SHEET NO. 9 - 8

9



Courtesy of Crane.Market



HC275 1188633

IHI

MODEL HC275

BOOM CENTER WELDMENT (15' 92HI)

REV NO. ①
SHEET NO. 9 - 8A

9

Courtesy of Crane.Market

KEY NO	PART NO	DESCRIPTION	QTY
0	X1188633	Boom Center Weldment (15' 92HI)	
9	474213	* Tube, Lacing	10
10	1187246	* Tube, Lacing	8
11	1188635	* Tube, Lacing	8
12	474222	* Tube, Lacing	3
19	451097	* Sheet	12
28	471021	* Weldment Jib Backstay Dead End	2

NOTE

IHI

MODEL HC275

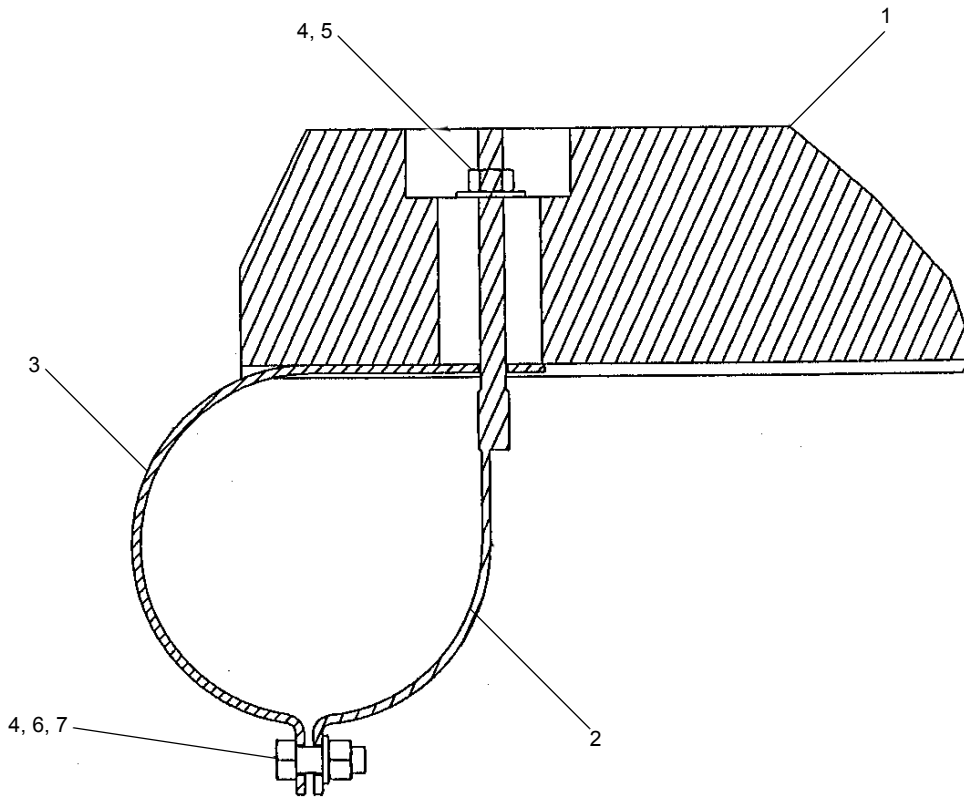
BOOM CENTER WELDMENT (15' 92HI)

REV NO. ①
SHEET NO. 9 - 8A

9



Courtesy of Crane.Market



KEY NO	PART NO	DESCRIPTION	QTY
0	X 1187248	Installation, Timber (92" Boom & 5.00" Chord)	
1	1186332	* Timber	1
2	436952	* Rod, THD2End	2
3	428505	* Bar, Bent	2
4	814654	* Nut, HEX	4
5	804470	* Washer, Flat	2
6	805058	* Washer, Lock	2
7	809833	* SCR, Cap	2

NOTE

HC275 1187248

IHI

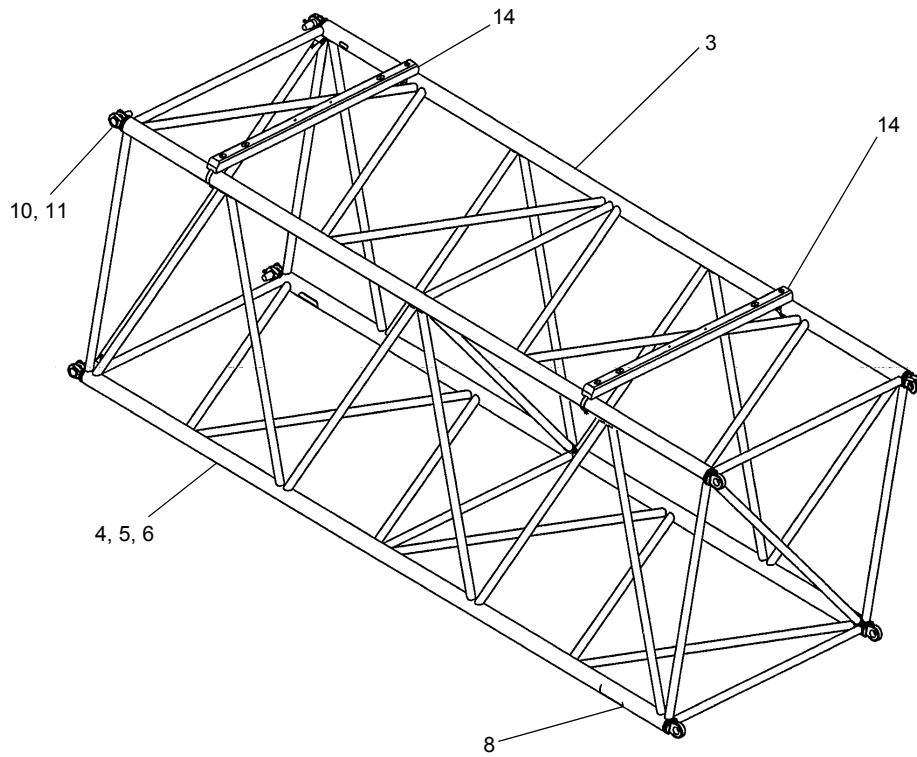
MODEL HC275

**TIMBER INSTALLATION
92" BOOM WITH 5.0" CHORD**

REV NO. ①
SHEET NO. 9 - 9

9





KEY NO	PART NO	DESCRIPTION	QTY
0	X 1078216	Boom Center 92HT 20'	
2*	1077993	* Paint & Decal Tubular Booms	1 STY
3	723324	* Boom Center Section (20FT 92ST)	1
4	1045331	* Paint, Enamel Black Air-Dry Enamel, ALKYD	2 GAL
5	1106349	* Solvents, Reducing D055 SPECS	0.50 GAL
6	1106553	* Paint, Primer Buff Air-Dry Primer, ALKYD	2 GAL
8	1078048	* Label, Name Warning, Boom	2
10	410556	* Pin, Headed	4
11	804919	* Pin, Cotter	4
14	1187248	* Installation, Timber (92" Boom & 5.00" Chord)	2

NOTE : * KEY NO 2 IS NOT SHOWN IN THE ILLUSTRATION

HC275 1078216

IHI

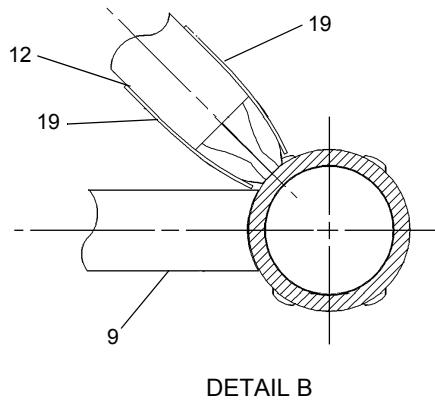
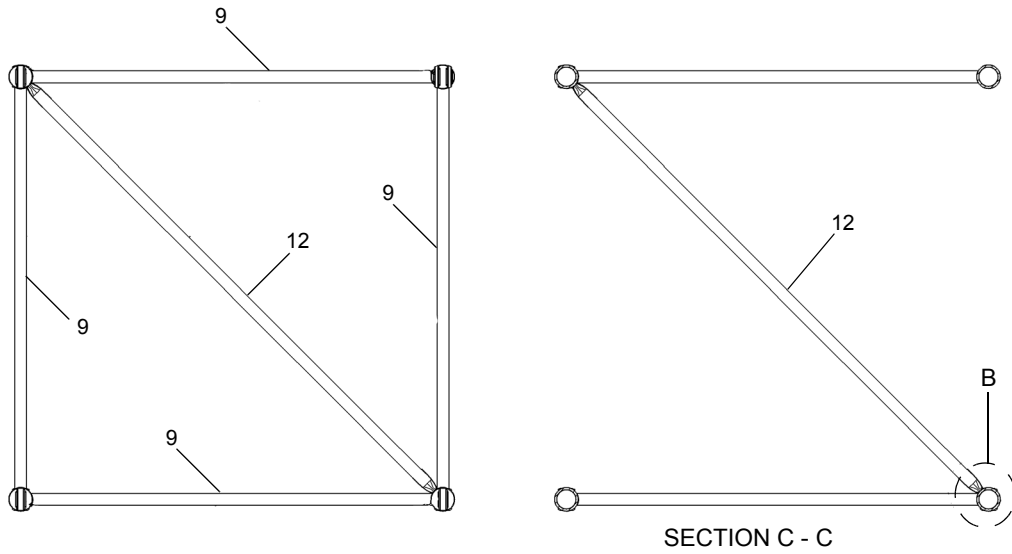
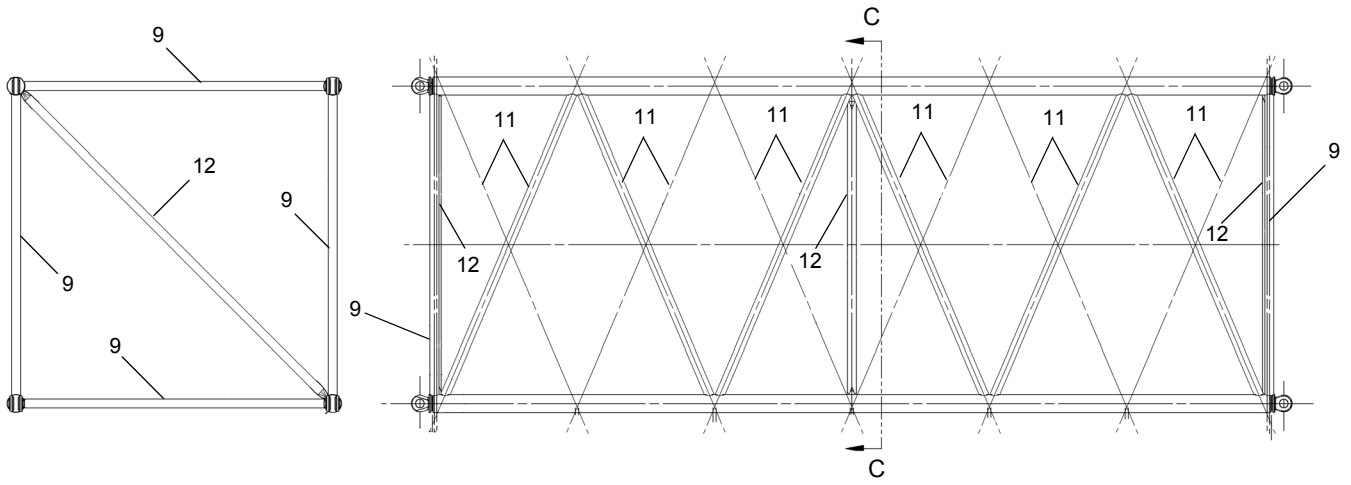
BOOM CENTER ASSY 20' 92HT

9

MODEL HC275

REV NO. ①
SHEET NO. 9 - 10

Courtesy of Crane.Market



HC275 723324

IHI

BOOM CENTER WELDMENT 20' 92HT

MODEL HC275

9

REV NO. ①
SHEET NO. 9 - 10A

Courtesy of Crane.Market

KEY NO	PART NO	DESCRIPTION	QTY
0	X 723324	Boom Center Section (20 FT 92HT)	
9	474213	* Tube, Lacing	10
10	474220	* Tube, Lacing	12
11	474221	* Tube, Lacing	12
12	474222	* Tube, Lacing	3
19	451097	* Sheet	12
31*	1080540	* Boom Kit 20 FT 92HT	1

NOTE : * KEY NO 31 IS NOT SHOWN IN THE ILLUSTRATION

IHI

MODEL HC275

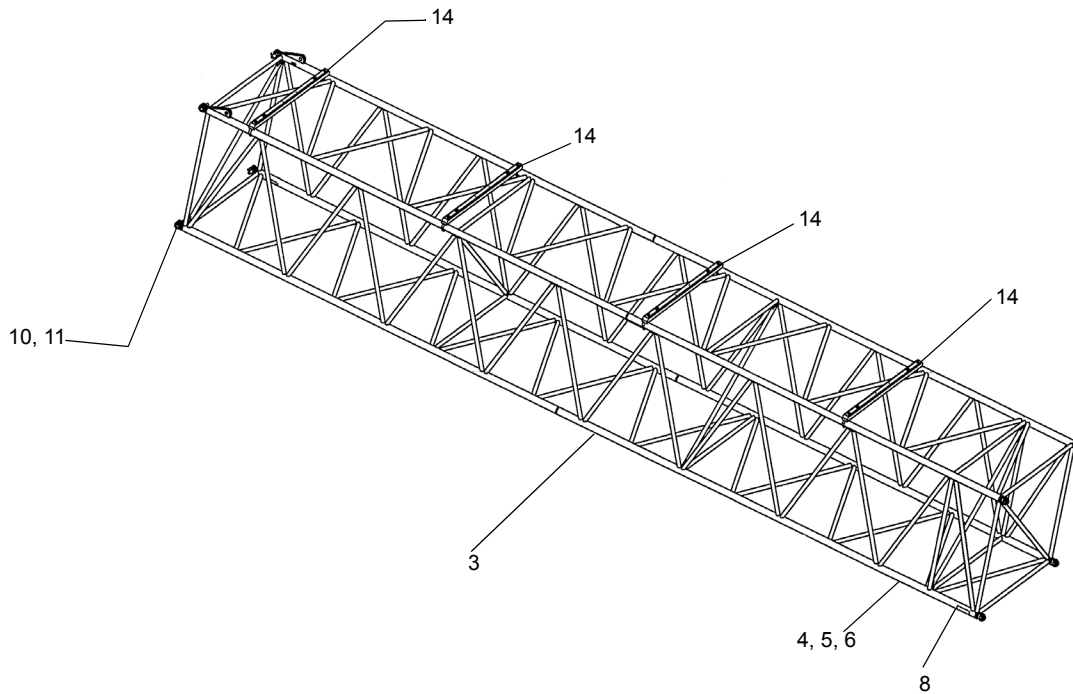
BOOM CENTER WELDMENT 20' 92HT

REV NO. ⁰
SHEET NO. 9 - 10A

9



Courtesy of Crane.Market



KEY NO	PART NO	DESCRIPTION	QTY
0	X 1078217	Boom Center 92ST 50'	
2*	1077993	* Paint & Decal Tubular Booms	1 STY
3	723327	* Boom Center Section (50 FT 92ST)	1
4	1045331	* Paint, Enamel Black Air-Dry Enamel, ALKYD	10 GAL
5	1106349	* Solvents, Reducing D055 SPECS	2.50 GAL
6	1106553	* Paint, Primer Buff Air-Dry Primer, ALKYD	10 GAL
8	1078048	* Label, Name Warning, Boom	2
10	410556	* Pin, Headed	4
11	804919	* Pin, Cotter	4
14	1189200	* Installation, Timber (92" Boom & 4.50" Chord)	4

NOTE : * KEY NO 2 NOT SHOWN IN THE ILLUSTRATION

HC275 1078217

IHI

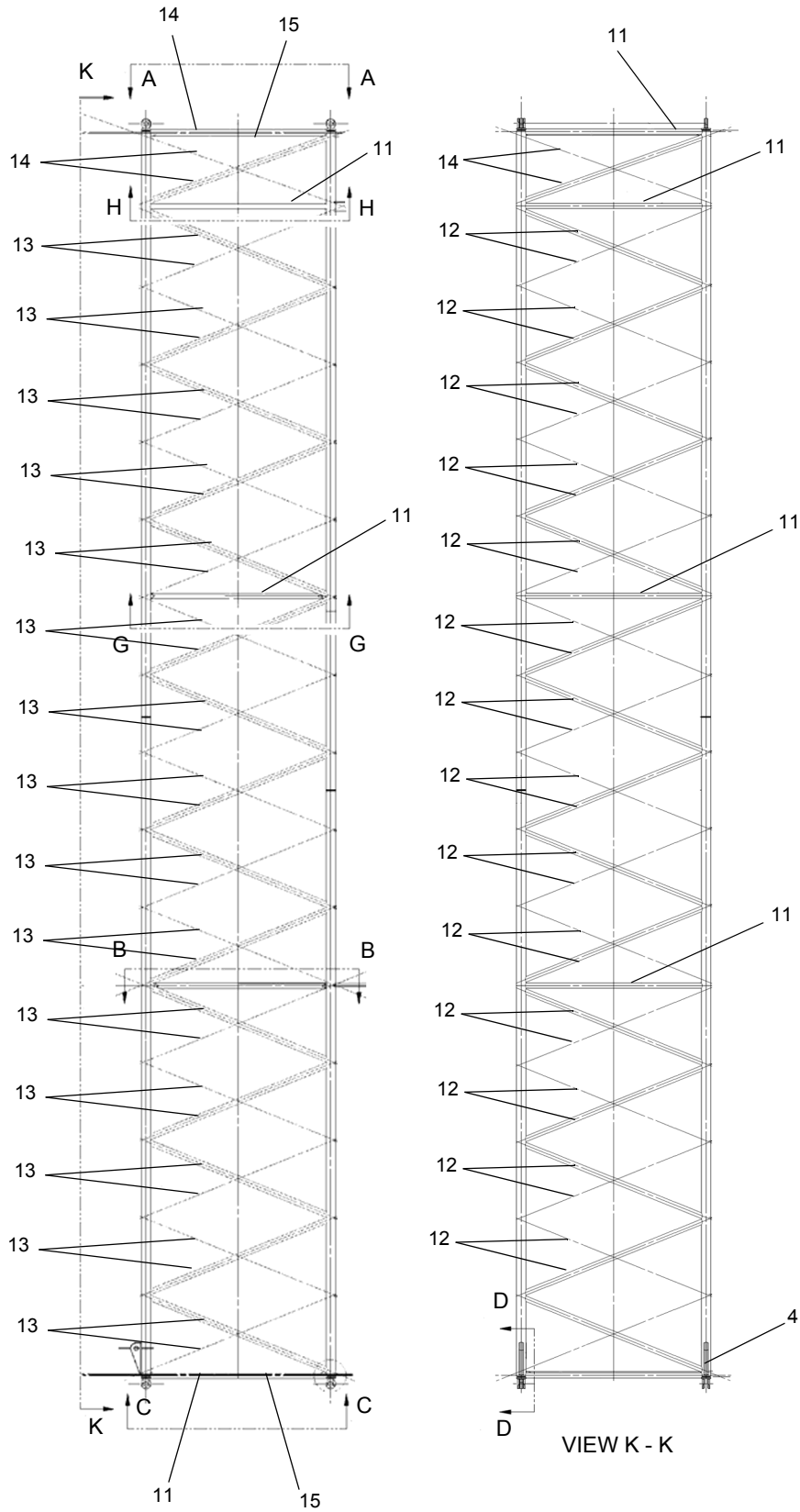
BOOM CENTER ASSY 50' 92ST

9

MODEL HC275

REV NO. ①
SHEET NO. 9 - 11

Courtesy of Crane.Market



HC275 723327

IHI

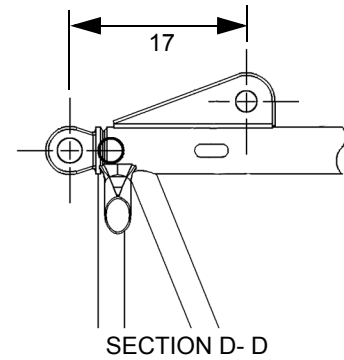
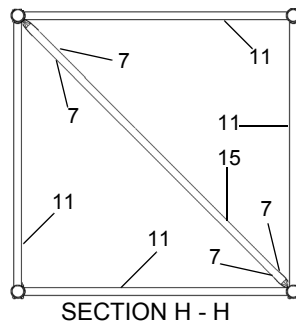
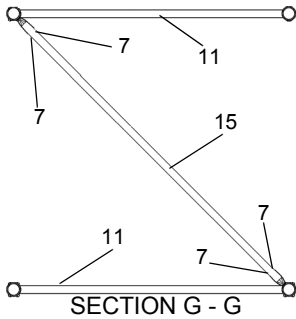
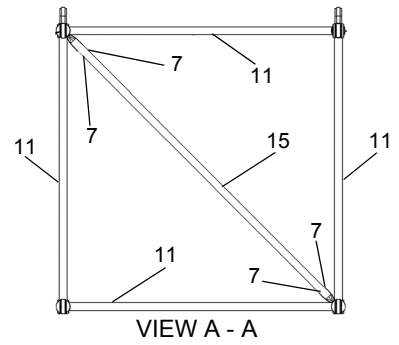
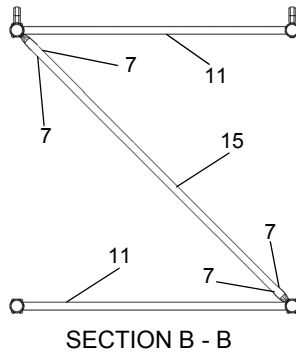
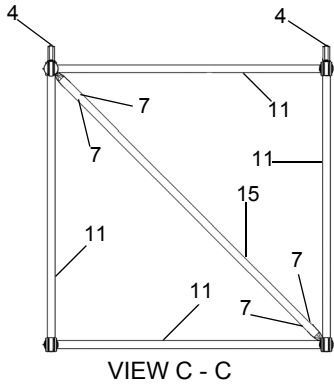
BOOM CENTER WELDMENT 50' 92ST

MODEL HC275

REV NO. ①
SHEET NO. 9 - 11A

9

Courtesy of Crane.Market



KEY NO	PART NO	DESCRIPTION	QTY
0	X 723327	Boom Center Section (50 FT 92ST)	
4	471021	* Bracket WLDT	2
7	451097	* Sheet	20
11	474227	* Tube, Lacing	16
12	414236	* Tube, Lacing	30
13	474237	* Tube, Lacing	30
14	474238	* Tube, Lacing	4
15	474228	* Tube, Lacing	5

NOTE :

HC275 723327

IHI

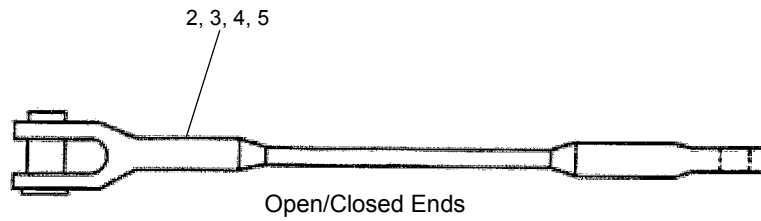
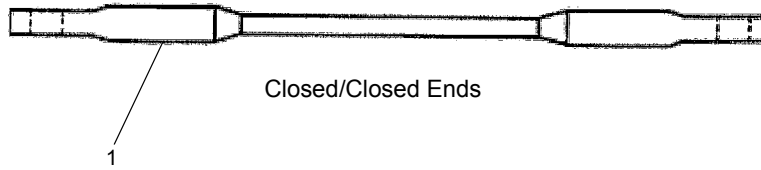
BOOM CENTER WELDMENT 50' 92ST

9

MODEL HC275

REV NO. ①
SHEET NO. 9 - 11A

Courtesy of Crane.Market



KEY NO	PART NO	DESCRIPTION	QTY
0	X Pendants	Boom Suspension Pendants	
1	1187535	* Basic Wraparound Both Ends Closed Length 82' 0"	
2	436349	* 10' Center Section Open Closed Ends Length 10' 0"	
3	1187252	* 15' Center Section Open Closed Ends Length 15' 0"	
4	436345	* 20' Center Section Open Closed Ends Length 20' 0"	
5	436347	* 50' Center Section Open Closed Ends Length 50' 0"	

NOTE :

HC275 PENDANTS

IHI

BOOM SUSPENSION PENDANTS

9

MODEL HC275

REV NO. ①
SHEET NO. 9 - 12



Courtesy of Crane.Market