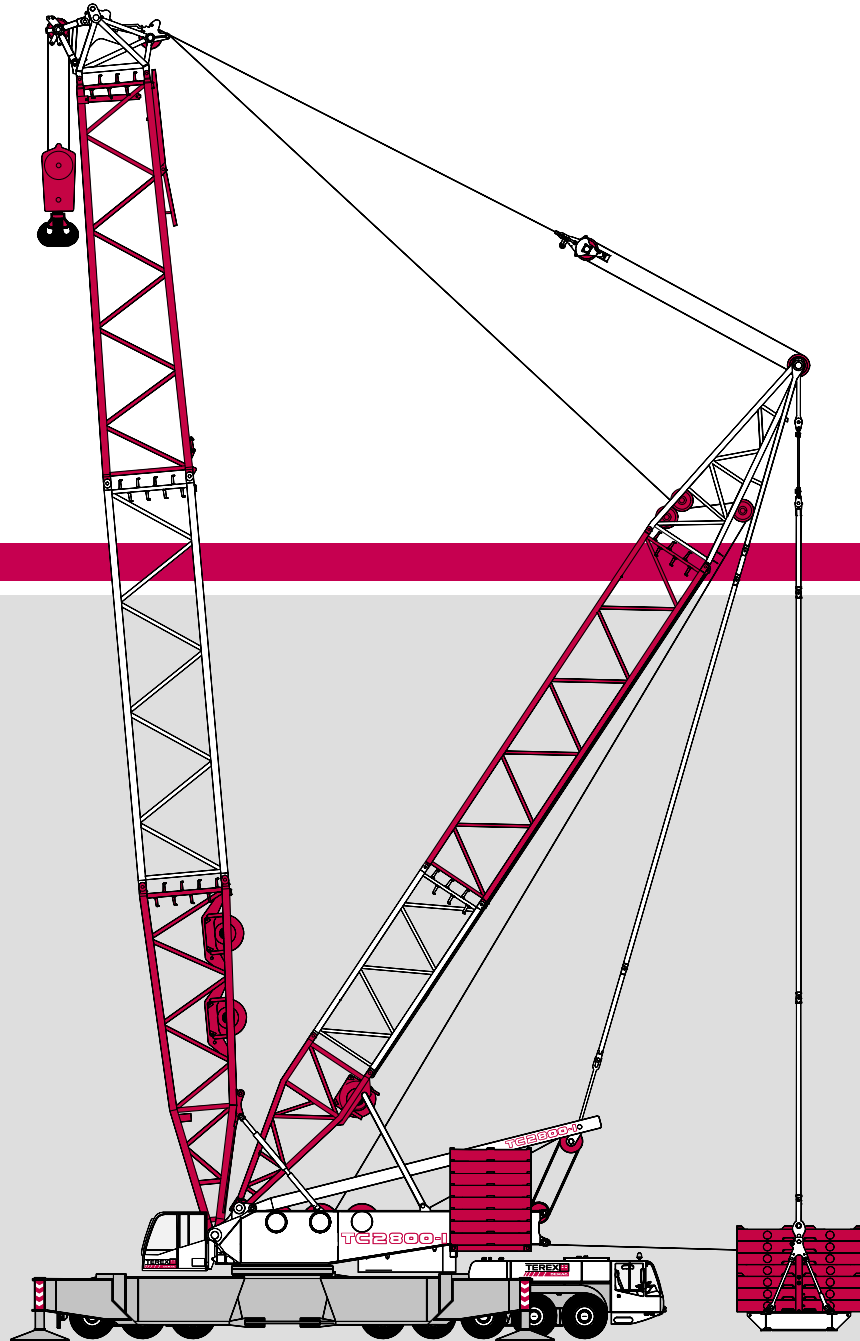


TC 2800-1

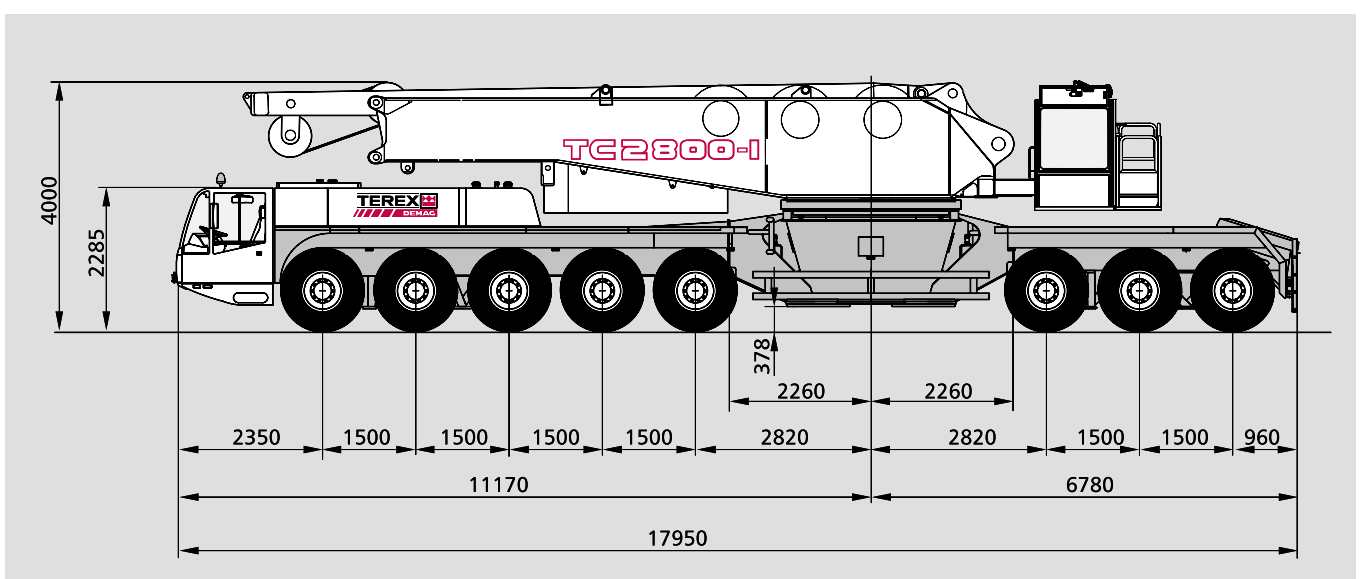
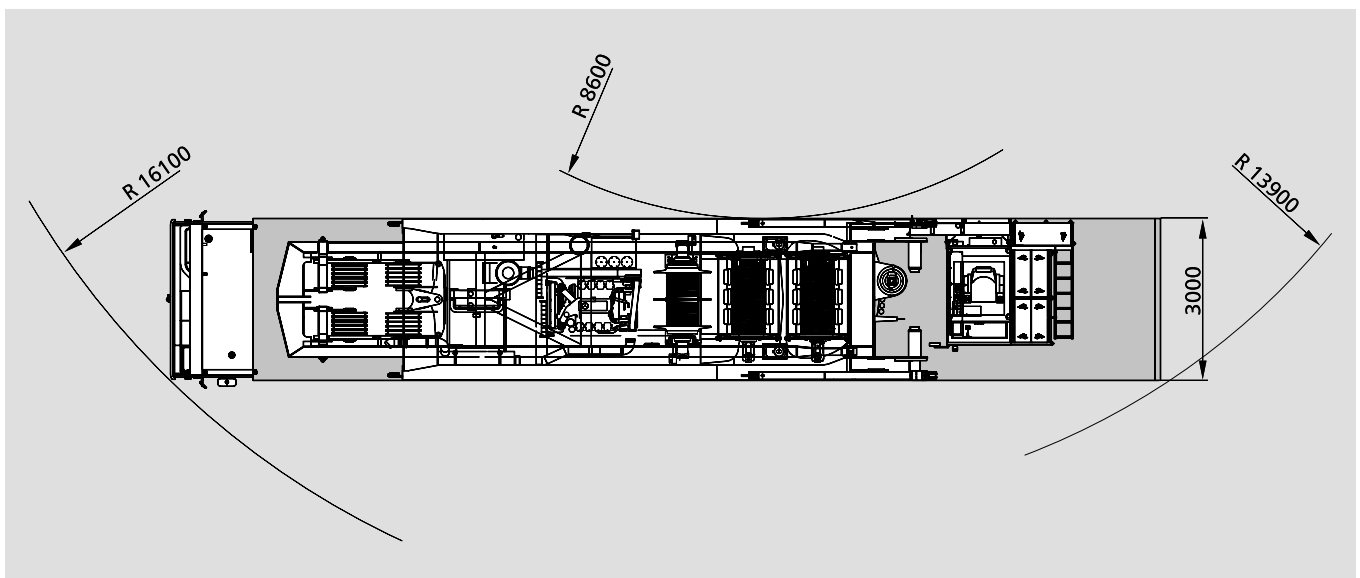



600t

Hook blocks
Unterflaschen
Crochets

Type Typ Type	Possible load Mögliche Traglast Charge possible	Number of sheaves Anzahl der Rollen Nombre de poulies	Number of lines Strangzahl Nombre de brins	Weight Gewicht Poids	„D“
2 x 300 t ¹⁾	600 t	2 x 11	2 x 22	11 500 kg	5,00 m
2 x 200 t ¹⁾	400 t	2 x 7	2 x 14	10 000 kg	4,80 m
160 t	160 t	5	11	4 800 kg	4,50 m
100 t	100 t	3	7	3 600 kg	4,30 m
50 t	48 t	1	3	2 800 kg	4,00 m
16 t	16 t	-	1	900 kg	3,00 m

1) The double hook blocks can be converted into single hook blocks
Die Doppelunterflaschen können in Einzelunterflaschen umgebaut werden
Les crochets bimoufles peuvent être transformés en crochets simples



Specifications (Transport)

Technische Daten (Transport)

Caractéristiques (Transport)

Axle loads
Achslasten
Poids d'essieux

Single axle load
Gewicht pro Achse
Poids par essieu

max. 12 000 kg

Total
Gesamt
Total

92 000 kg

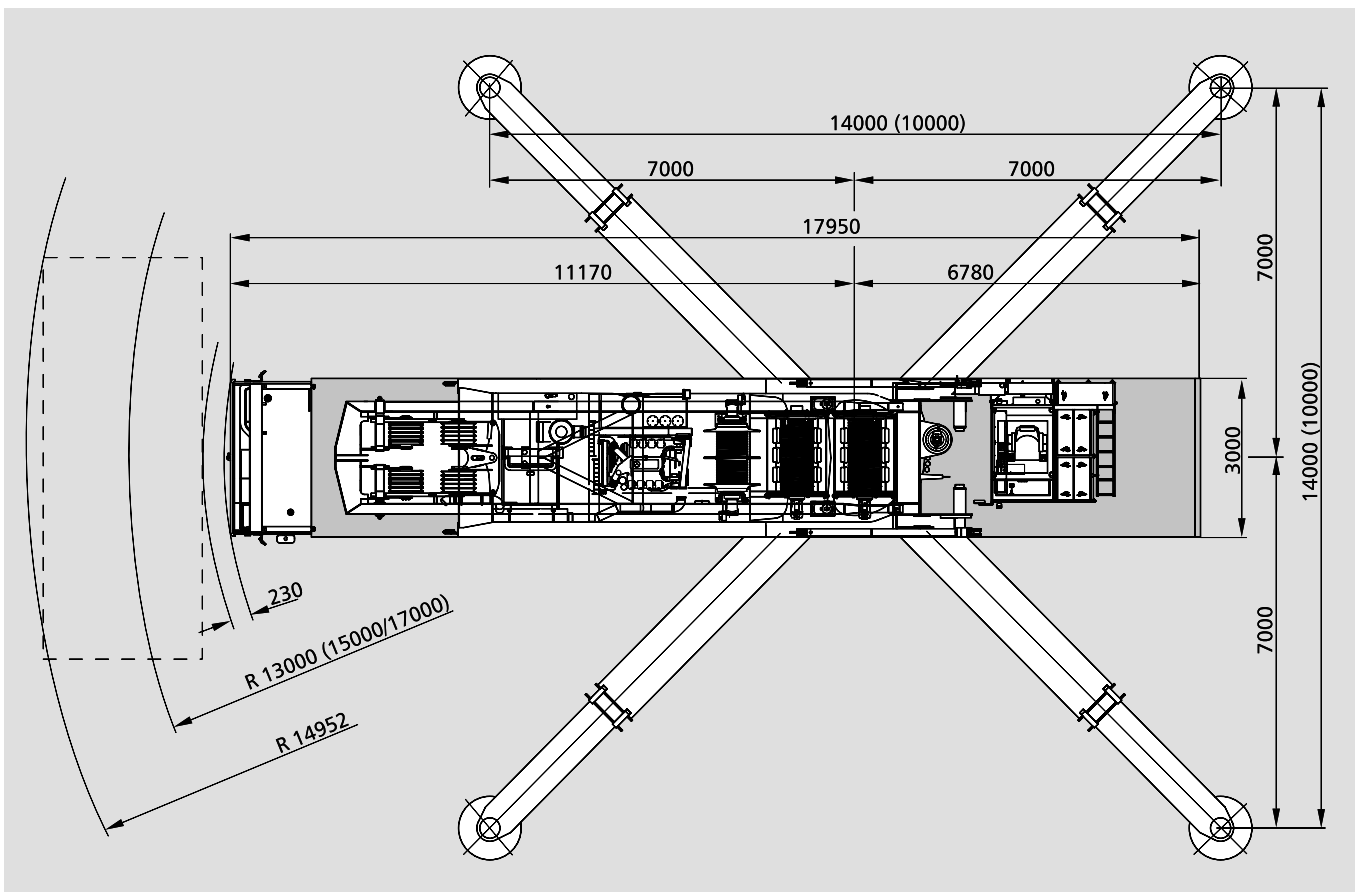
Tyres
Bereifung
Pneumatiques

14.00 R 25

Carrier performance
Fahrleistungen
Performances du porteur

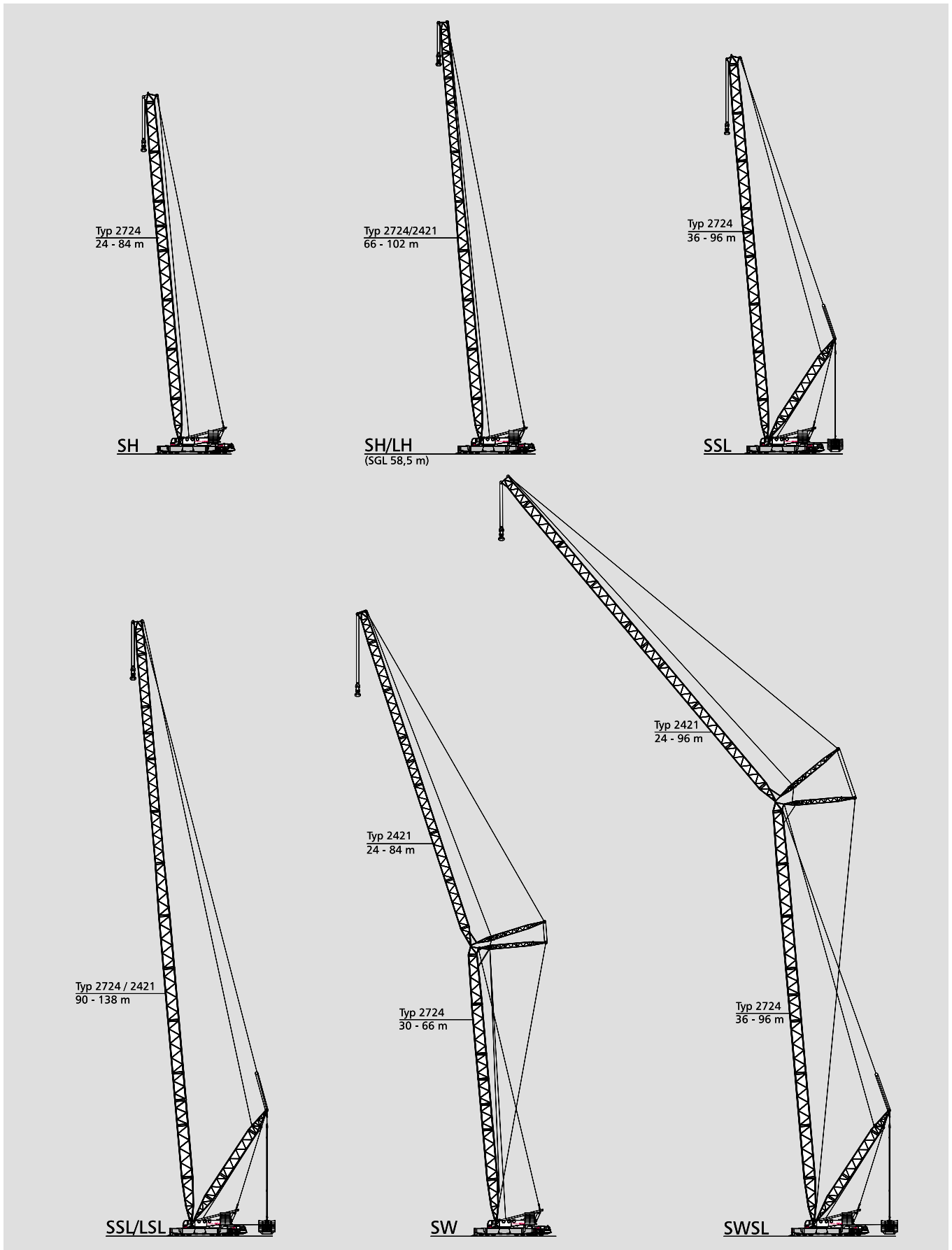
Travel speed
Fahrgeschwindigkeit
Vitesses de translation

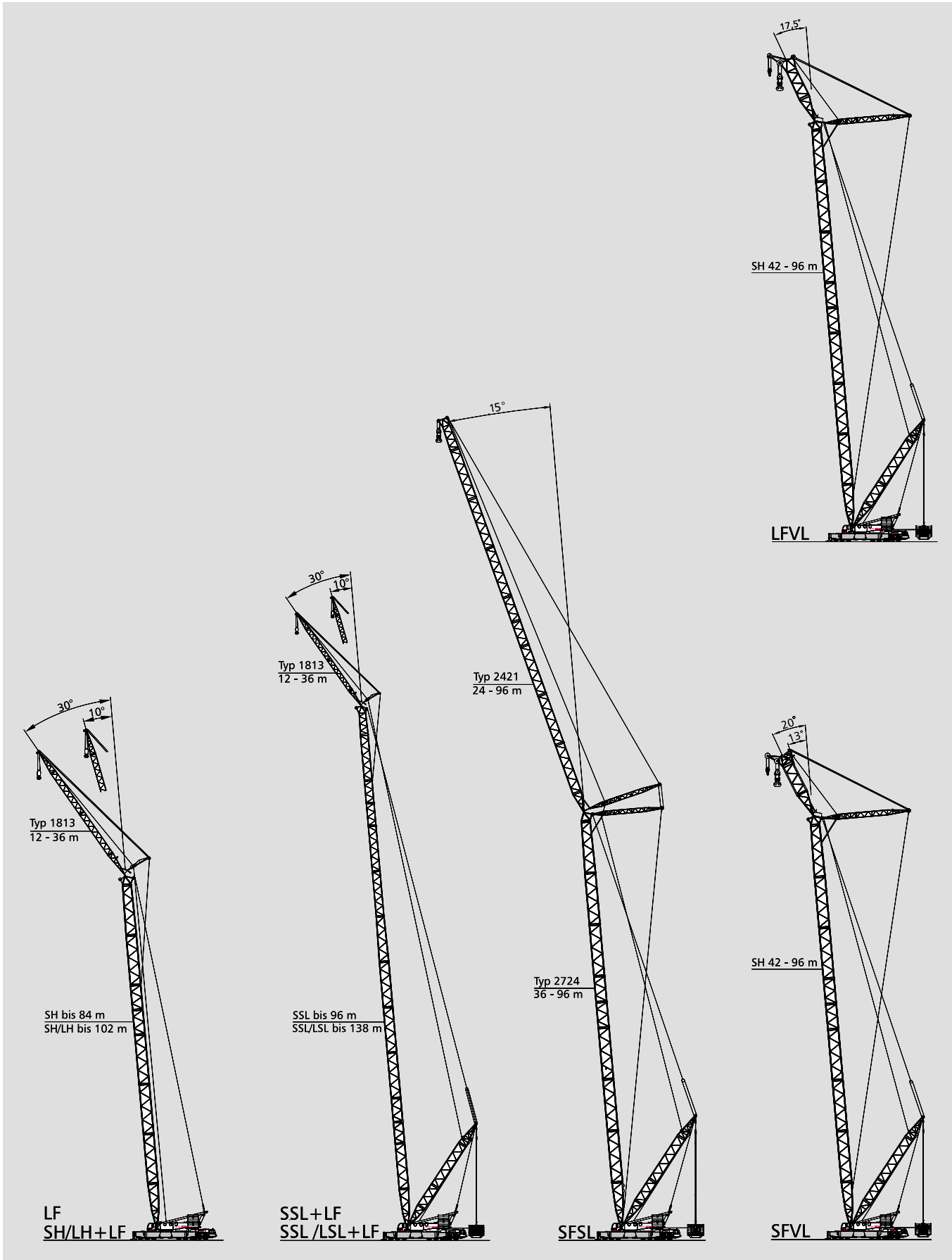
0-62 km / h



TC 2800-1

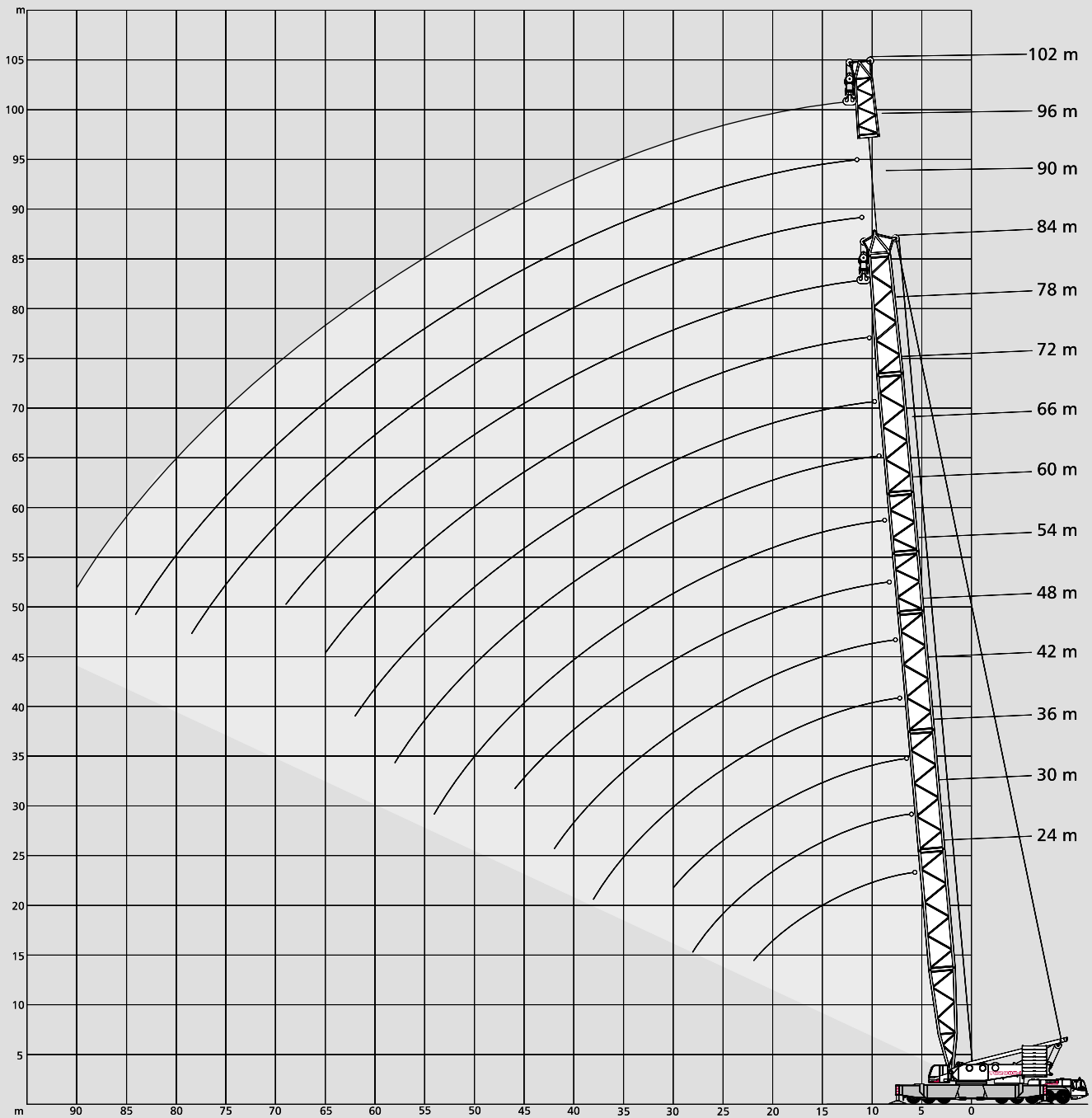
Boom combinations Ausleger-Kombinationen Combinaisons de flèche





Working ranges main boom Arbeitsbereiche Hauptausleger Portées flèche principale

SH, SH/LH



TC 2800-1

Lifting capacities main boom

Tragfähigkeiten Hauptausleger

Capacités de levage flèche principale

200 t 

 14 x 14 m 360°

DIN/ISO

Radius Ausladung		Main boom · Hauptausleger · Flèche principale										
Portée	m	24,0	30,0	36,0	42,0	48,0	54,0	60,0	66,0	72,0	78,0	84,0
		t	t	t	t	t	t	t	t	t	t	t
	6	600,0	-	-	-	-	-	-	-	-	-	-
	7	552,0	549,0	545,0	-	-	-	-	-	-	-	-
	8	508,0	505,0	501,0	498,0	495,0	-	-	-	-	-	-
	9	461,0	457,0	454,0	451,0	449,0	447,0	415,0	-	-	-	-
	10	414,0	411,0	408,0	405,0	403,0	401,0	393,0	343,0	301,0	-	-
	12	337,0	334,0	332,0	329,0	327,0	325,0	324,0	315,0	278,0	256,0	212,0
	14	284,0	281,0	278,0	276,0	274,0	272,0	270,0	269,0	262,0	215,0	210,0
	16	245,0	242,0	239,0	237,0	234,0	232,0	231,0	229,0	228,0	200,0	177,0
	18	214,0	210,0	207,0	204,0	201,0	199,0	198,0	196,0	195,0	185,0	164,0
	20	187,0	186,0	181,0	178,0	176,0	174,0	172,0	170,0	169,0	166,0	152,0
	22	161,0	159,0	157,0	155,0	154,0	153,0	152,0	150,0	148,0	147,0	142,0
SH	24	-	139,0	137,0	135,0	133,0	133,0	132,0	131,0	130,0	130,0	127,0
	26	-	123,0	121,0	119,0	117,0	116,0	115,0	114,0	114,0	113,0	111,0
	28	-	110,0	108,0	106,0	104,0	103,0	102,0	101,0	100,0	99,5	98,0
	30	-	-	97,0	95,0	93,5	92,5	91,5	90,5	89,5	88,5	87,0
	34	-	-	-	78,5	76,5	75,5	74,5	73,5	72,5	71,5	70,0
	38	-	-	-	66,5	64,5	63,0	62,0	60,5	59,5	59,0	57,0
	42	-	-	-	-	55,5	53,5	52,5	51,0	50,0	49,2	47,4
	46	-	-	-	-	-	46,6	45,0	43,7	42,5	41,2	39,2
	50	-	-	-	-	-	-	39,1	37,5	36,0	34,7	32,6
	54	-	-	-	-	-	-	34,2	32,4	30,7	29,3	27,2
	58	-	-	-	-	-	-	28,2	26,3	24,8	22,7	
	62	-	-	-	-	-	-	-	22,7	21,1	18,9	
	66	-	-	-	-	-	-	-	-	18,0	15,7	
	70	-	-	-	-	-	-	-	-	-	15,5	13,0
	74	-	-	-	-	-	-	-	-	-	-	10,8
	78	-	-	-	-	-	-	-	-	-	-	-

160 t 

 14 x 14 m 360°

DIN/ISO

Radius Ausladung		Main boom · Hauptausleger · Flèche principale										
Portée	m	24,0	30,0	36,0	42,0	48,0	54,0	60,0	66,0	72,0	78,0	84,0
		t	t	t	t	t	t	t	t	t	t	t
	6	600,0	-	-	-	-	-	-	-	-	-	-
	7	549,0	545,0	542,0	-	-	-	-	-	-	-	-
	8	496,0	493,0	490,0	487,0	484,0	-	-	-	-	-	-
	9	440,0	437,0	434,0	431,0	429,0	427,0	415,0	-	-	-	-
	10	391,0	388,0	385,0	382,0	380,0	378,0	377,0	343,0	301,0	-	-
	12	318,0	316,0	313,0	310,0	308,0	306,0	305,0	290,0	276,0	256,0	212,0
	14	268,0	265,0	262,0	260,0	258,0	256,0	247,0	237,0	227,0	215,0	208,0
	16	231,0	228,0	225,0	223,0	220,0	215,0	207,0	199,0	191,0	184,0	177,0
	18	189,0	187,0	186,0	184,0	183,0	183,0	177,0	170,0	164,0	158,0	152,0
	20	158,0	156,0	155,0	153,0	152,0	151,0	150,0	148,0	143,0	138,0	133,0
	22	135,0	133,0	132,0	130,0	129,0	128,0	127,0	126,0	126,0	122,0	118,0
SH	24	-	116,0	114,0	112,0	111,0	110,0	109,0	108,0	108,0	107,0	105,0
	26	-	102,0	100,0	98,5	97,0	96,0	95,5	94,5	93,5	93,0	91,5
	28	-	92,0	89,5	87,5	86,0	85,0	84,0	83,0	82,0	81,5	80,0
	30	-	-	80,5	78,5	76,5	75,5	74,5	73,5	73,0	72,0	70,5
	34	-	-	-	64,5	62,5	61,0	60,0	59,0	58,0	57,0	55,5
	38	-	-	-	54,0	52,0	50,5	49,6	48,5	47,5	46,6	44,6
	42	-	-	-	-	44,6	42,9	41,5	40,2	38,9	37,7	35,7
	46	-	-	-	-	-	36,7	34,9	33,4	32,0	30,8	28,7
	50	-	-	-	-	-	-	29,7	28,0	26,5	25,2	23,1
	54	-	-	-	-	-	-	25,5	23,7	22,0	20,6	18,5
	58	-	-	-	-	-	-	20,2	18,3	16,8	14,6	
	62	-	-	-	-	-	-	-	15,3	13,7	11,4	
	66	-	-	-	-	-	-	-	-	11,1	8,8	
	70	-	-	-	-	-	-	-	-	9,0	6,6	

200 t



14 x 14 m

360°

DIN/ISO

Radius Ausladung		Main boom · Hauptausleger · Flèche principale							
Portée	m	66,0	72,0	78,0	84,0	90,0	96,0	102,0	
		t	t	t	t	t	t	t	
	9	298,0	-	-	-	-	-	-	
	10	298,0	268,0	202,0	-	-	-	-	
	12	283,0	268,0	202,0	169,0	154,0	137,0	-	
	14	236,0	220,0	178,0	150,0	154,0	137,0	108,0	
	16	209,0	193,0	158,0	133,0	142,0	127,0	103,0	
	18	184,0	170,0	140,0	119,0	131,0	118,0	98,5	
	20	162,0	150,0	125,0	107,0	123,0	110,0	93,5	
	22	145,0	134,0	112,0	96,0	115,0	104,0	89,0	
	24	134,0	123,0	102,0	87,0	109,0	98,0	84,5	
	26	120,0	114,0	95,0	80,0	103,0	93,0	80,0	
	28	107,0	105,0	88,0	73,0	97,0	89,0	75,5	
SH / LH	30	96,5	96,0	81,5	67,5	92,0	84,0	71,5	
	34	79,0	79,0	69,5	58,0	77,0	76,0	64,0	
	38	66,5	66,0	60,0	49,4	64,5	63,0	57,5	
	42	57,0	56,5	51,0	41,5	54,5	54,0	51,5	
	46	49,3	48,8	45,0	35,0	47,0	46,4	45,6	
	50	43,0	42,0	39,0	31,0	40,6	40,0	39,6	
	54	38,0	37,0	34,0	27,0	35,3	34,5	34,0	
	58	33,8	33,0	30,0	25,0	30,6	29,8	29,3	
	62	-	29,0	26,0	22,0	26,6	25,8	25,2	
	66	-	-	22,0	19,0	23,2	22,4	21,8	
	70	-	-	18,0	16,0	20,3	19,4	18,6	
	74	-	-	-	12,0	17,8	16,9	15,5	
	78	-	-	-	-	15,5	14,6	12,7	
	82	-	-	-	-	-	12,6	10,4	
	86	-	-	-	-	-	-	8,4	
	90	-	-	-	-	-	-	6,8	

2

160 t



14 x 14 m

360°

DIN/ISO

Radius Ausladung		Main boom · Hauptausleger · Flèche principale							
Portée	m	66,0	72,0	78,0	84,0	90,0	96,0	102,0	
		t	t	t	t	t	t	t	
	9	298,0	-	-	-	-	-	-	
	10	298,0	268,0	202,0	-	-	-	-	
	12	283,0	268,0	202,0	169,0	154,0	137,0	-	
	14	236,0	220,0	178,0	150,0	154,0	137,0	108,0	
	16	202,0	193,0	158,0	133,0	142,0	127,0	103,0	
	18	174,0	168,0	140,0	119,0	131,0	118,0	98,5	
	20	152,0	148,0	125,0	107,0	123,0	110,0	93,5	
	22	132,0	131,0	112,0	96,0	115,0	104,0	89,0	
	24	114,0	114,0	102,0	87,0	108,0	98,0	84,5	
	26	100,0	100,0	95,0	80,0	97,5	93,0	80,0	
	28	89,0	89,0	88,0	73,0	87,5	86,0	75,5	
SH / LH	30	79,5	79,5	79,0	67,5	78,0	77,5	71,5	
	34	65,0	64,5	64,5	58,0	63,0	62,5	62,5	
	38	54,0	54,0	53,5	49,4	52,0	51,5	51,0	
	42	46,0	45,6	45,2	41,5	43,8	43,3	42,9	
	46	39,4	39,0	38,6	35,0	37,1	36,5	36,0	
	50	34,1	33,6	33,1	31,0	31,4	30,6	30,1	
	54	29,7	29,0	28,4	27,0	26,6	25,8	25,3	
	58	25,9	25,2	24,5	23,4	22,6	21,8	21,2	
	62	-	21,9	21,2	20,0	19,2	18,4	17,8	
	66	-	-	18,4	17,2	16,3	15,5	14,8	
	70	-	-	16,0	14,7	13,8	12,9	12,3	
	74	-	-	-	12,0	11,7	10,8	10,1	
	78	-	-	-	-	9,8	8,8	8,1	
	82	-	-	-	-	-	7,2	6,4	
	86	-	-	-	-	-	-	4,9	
	90	-	-	-	-	-	-	-	