

# MATERIAL HANDLERS



**WORKS FOR YOU.™**

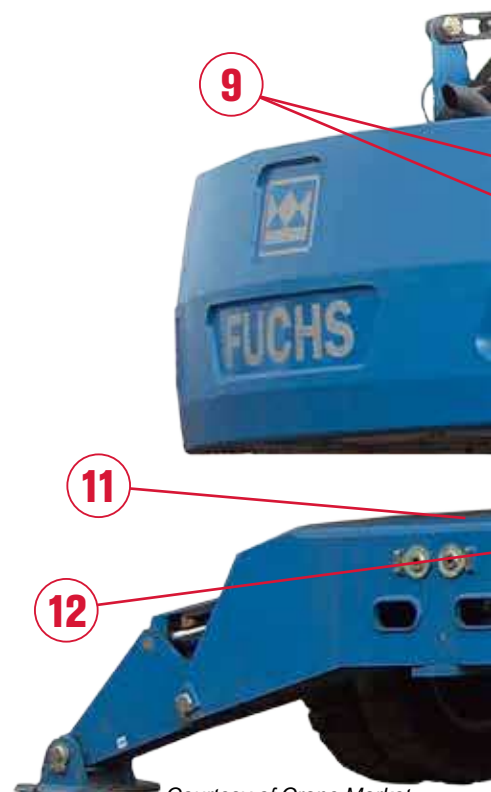
# PURPOSE BUILT TO EXCEL

## DEDICATED TO CUSTOMER SATISFACTION

The Terex® Fuchs brand on your equipment gives you the strength of a world-wide organization that is focused on delivering reliable equipment solutions to your job site. When you select Terex® Fuchs equipment, you also get the dedication and support of the entire Terex Corporation, including engineering, manufacturing, logistics, parts warehouses and financial services. Our dedication to assuring maximum return on your Terex® equipment investment is second-to-none.

## DESIGNED TO DELIVER

1. Hydraulic height-adjustable cabin
2. Spacious cabin with heat, A/C system and color display
3. Protective pipes routed along the boom
4. Quick change hitch for easy attachment changeover
5. Protection on the stick for hydraulic lines
6. Hose rupture valves for boom and stick cylinders
7. Automatic central lubrication system with adjustable intervals
8. Built-in stow away service access steps
9. Separate large surface area coolers for the engine and hydraulic system to maximize efficiency
10. Double-row slewing ring for enhanced durability
11. Symmetrical chassis with continuous structural plates
12. Oscillating rear axle with push button for axle lock release





2

3

5

4

6

7

8

10

# UNRIVALED PRODUCTIVITY

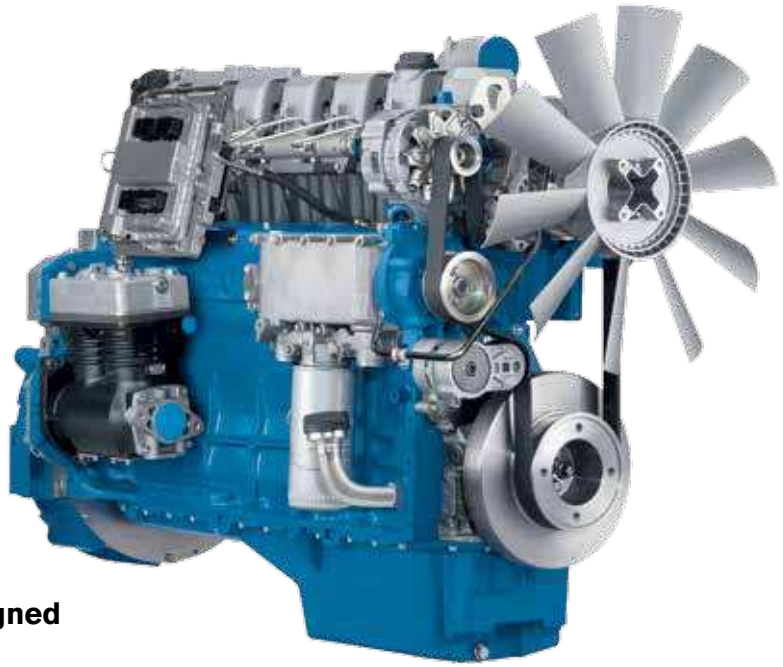
## GET THE POWER TO MOVE MORE

Terex® Fuchs material handlers offer powerful, fuel-efficient engines that are well matched to hydraulic functions delivering loading cycles with speed and precision.

Power management control technology optimizes engine performance across speed ranges.

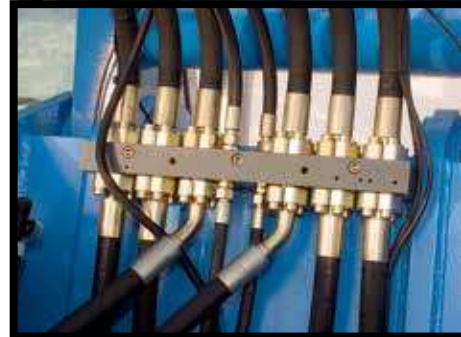
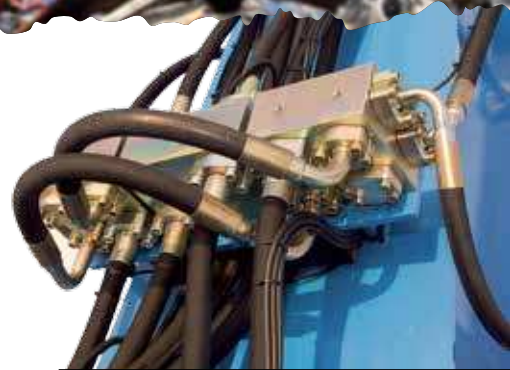
The hydraulic system is specifically designed for the needs of tough material handling operations. With fast cycle times and high load-bearing capacities, Terex® Fuchs material handlers have the power to move more.

To meet demanding market requirements, we use a hydraulic system where it's possible to extend oil change intervals up to 3,000 hours subject to sampling results. Filter elements have been designed to protect the oil when elements are replaced.



### Key Features:

- ▶ High performance turbocharged and water-cooled engines
- ▶ Low noise emissions providing comfortable operating conditions
- ▶ Powers smooth load-sensing hydraulics for efficient and responsive working cycles



## HYDRAULICS

Whether you're dealing with rapid power cycles or unwieldy loads – Terex® Fuchs material handlers provide hydraulic performance as needed when needed.

# INCREASED UPTIME

## SERVICING AND MAINTENANCE MADE SIMPLE

Decrease maintenance downtime with our line of material handlers. Integrated steps lead up to a central upper carriage service platform for convenient access to maintenance points and components. These steps conveniently stow away when not in use.



## OPTIMIZE COOLING EFFICIENCY AND PERFORMANCE

Terex® Fuchs material handlers also feature an easily accessible, large surface hydraulic oil cooler, which is arranged separately from engine cooling systems to optimize efficiency and performance while regulating temperature.

Fluid temperatures, as well as other operating conditions, are easily monitored on the multi-function color display inside the cabin.

### Cooling System Features:

- ▶ Large surface area coolers to maximize heat dissipation
- ▶ Excellent cooling performance with low noise emissions
- ▶ Hydrostatically powered hydraulic oil-cooling fan
- ▶ Thermostatically controlled hydraulic oil-cooling fan speeds
- ▶ Engine fan drive for water and charge air cooling with temperature controlled fan speed





### **SERVICEABILITY**

The easily accessible maintenance platform substantially facilitates servicing; components are located within easy view and reach. Engine cooler and hydraulic oil cooler access panels are lockable and within reach from ground level for service.

### **DURABILITY**

Machines feature a large diameter double-row slewing ring designed for enhanced performance and increased durability.

# MAXIMUM EFFICIENCY AND COMFORT

## CONVENIENT, ACCESSIBLE OPERATOR CONTROLS

In addition to an adjustable color display, our operator's cabin features a joystick control layout purposefully designed with material handling operations in mind. Commands are conveniently grouped on each joystick for optimal control.

Horn, turn signals and magnet buttons are grouped on the left joystick with the slewing brake on the backside. The right joystick incorporates grapple slewing and the flexibility to add options with pressure boost function on back.

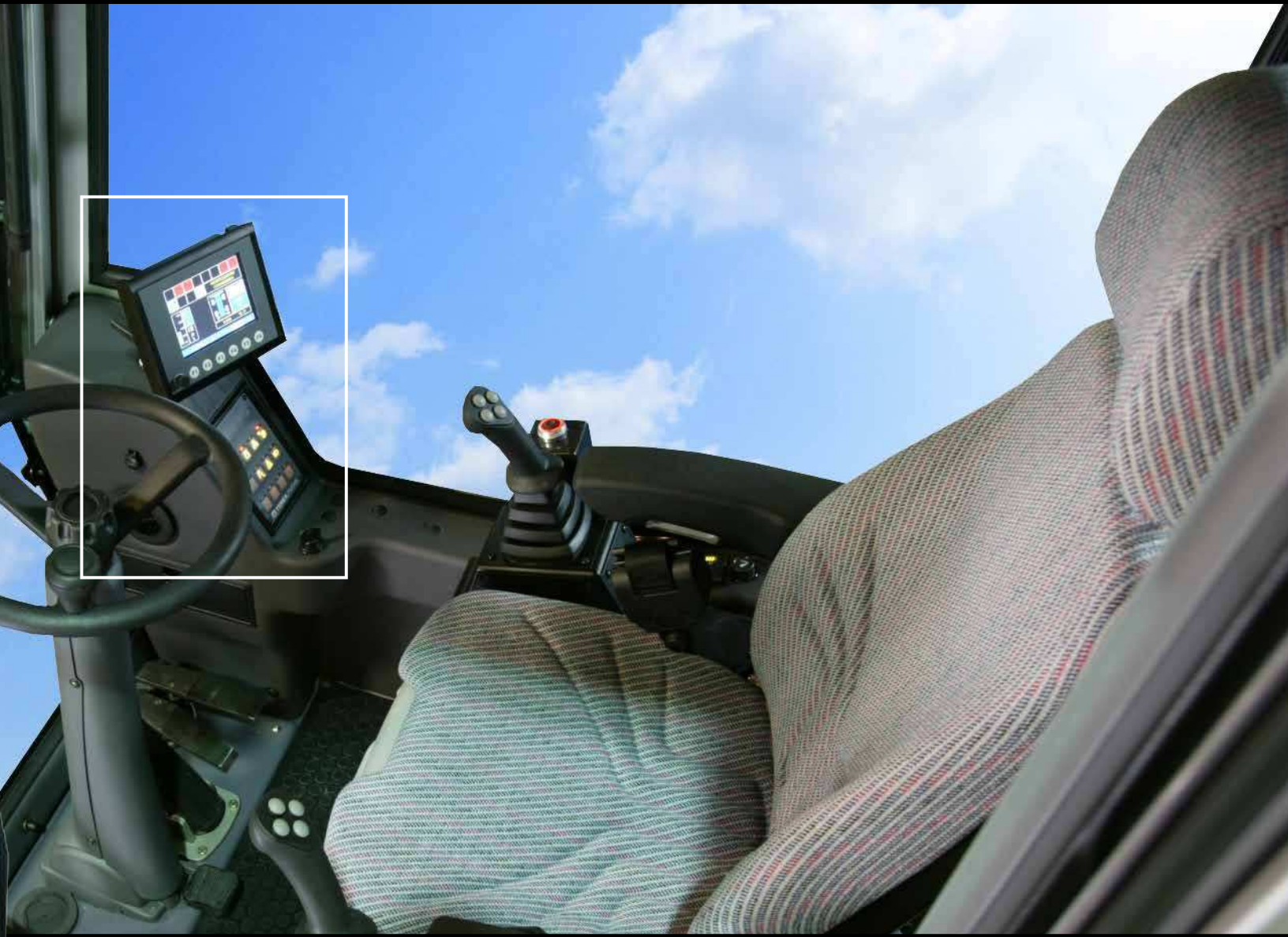
The control console features push buttons with LED indicators for activation of functions.

### Key Cabin Features:

- ▶ Enhanced efficiency and productivity with conveniently accessible controls including push button console with activation lights
- ▶ Large color display for easy viewing
- ▶ Diagnostic messages and indicators visible on screen
- ▶ Ergonomic and versatile joystick controls for operator comfort
- ▶ Multifunction button allows for effortless and smooth throttle control







Horn  
 Turn Signal left and right  
 Magnet



back

Slewing brake



Free for options  
 Grapple slewing left and right  
 Free for options



back

Pressure boost



### MINIMIZING OPERATOR FATIGUE

Terex® Fuchs machines are purpose built to minimize operator fatigue with large panoramic windows and an elevating cabin for enhanced visibility. Our light and spacious interior coupled with an ergonomically designed operator station including a comfort seat adapts to operator needs and not vice versa

# TOUGH AND FLEXIBLE

## OUR MATERIAL HANDLERS ARE ENGINEERED TO MEET A VARIETY OF JOB REQUIREMENTS

The Terex® Fuchs line of material handling machines features flexible loading equipment combinations offering various configurations.

The box-type structural design provides stability and a tremendous load-bearing capacity whether you are working in recycling facilities with multi-purpose sticks for sorting or in portside applications with cranked booms to maximize below grade reach. For high reach and stacking, a standard boom and stick gets the job done.





### IN TRANSIT

Our material handlers can be easily transported without dipperstick removal, and protective plating on the dipperstick protects hydraulic lines during transport and operation.



# MAXIMIZE YOUR INVESTMENT

## WORK ATTACHMENTS MAKE TEREX® FUCHS MATERIAL HANDERS MORE VERSITILE

Terex® Fuchs cactus grabs are specially designed for scrap handling. With their robust design, they are suitable for tough, day-to-day operations. The superior performance of Terex® Fuchs cactus grabs is the result of advanced kinematic design, with high tine-closing forces and a power flow perfectly matching the design. The use of high-quality materials also enhances longevity.

Our electro-magnets are designed for operation in scrap and feeder yards. The powerful field-force over the entire diameter of the magnetic plate enables high handling capacities. Rapid magnetization and demagnetization of material allows for efficient sorting and clean-up work on site.



### QUICK CHANGE ARTIST

With a quick change hitch rapid and convenient changeover between Terex® Fuchs grapples and magnets is possible.



### **CATUS GRABS**

Our 5-tine rotating cactus grabs are available in a variety of sizes and configurations - open, half-closed and closed tine design. Grab cylinders feature integrated protective guards and end of stroke dampening.



### **MAGNET PLATES**

Hydraulically rotating and rigid magnetic plates, and magnet plates with chain suspension are available to meet your application needs.



### **LIFT HOOKS**

The Terex® Fuchs range of lift hooks is available with standard suspension (rigid or rotating) and quick change suspension (rigid or rotating).



# WIDE RANGE OF OPTIONS

## THE RIGHT MACHINE FOR YOUR NEEDS

Be it at scrap yards, recycling plants, transfer stations, inland waterways and sea ports - Terex Fuchs machines always stand for high productivity and efficiency.

We offer scrap and recycling machine models ranging from 114 hp (85 kW) to 366 hp (273 kW) with operating weights from 39,242 lbs (17.8 t) to 198,416 lbs (90 t).

Custom built machines are also possible and can be configured for site-specific job requirements. See your local Terex® Fuchs representative for more information.

Custom Built Machines are tailored to meet individual application requirements.





	<b>MHL320 D</b>	<b>MHL331 D</b>	<b>MHL335</b>
<b>Engine</b>	114 hp (85 kW)	153 hp (114 kW)	153 hp (114 kW)
<b>Weight</b>	39,242-41,888 lbs (17.8-19.0 t)	48,501-51,808 lbs (22.0-23.5 t)	51,808-55,115 lbs (23.5-25.0 t)
<b>Reach</b>	26.9-34.1 ft (8.2-10.4 m)	35.1-39.4 ft (10.7-12.0 m)	35.1-39.4 ft (10.7-12.0 m)
<b>Grapple*</b>	0.52-0.78 yd3 (0.4-0.6 m3)	0.52-0.78 yd3 (0.4-0.6 m3)	0.52-1.0 yd3 (0.4-0.8 m3)
<b>Generator</b>	11 kW	13 kW	13 kW

\*Grapple selection may vary depending on the material being handled, machine lifting capacity and operating conditions.



	<b>MHL340 E</b>	<b>MHL350 E</b>	<b>MHL360 E</b>	<b>MHL380 D</b>
<b>Engine</b>	173 hp (129 kW)	214 hp (160 kW)	254 hp (190 kW)	366 hp (273 kW)
<b>Weight</b>	60,627-63,934 lbs (27.5-29.0 t)	70,548-78,264 lbs (32.0-35.5 t)	97,003-101,413 lbs (44.0-46.0 t)	145,505-147,710 lbs (66.0-67.0 t)
<b>Reach</b>	40.0-45.0 ft (2.2-13.7 m)	45.9-52.5 ft (14.0-16.0 m)	54.1-59.0 ft (16.5-18.0 m)	60.7-72.2 ft (18.5-22.0 m)
<b>Grapple*</b>	0.52-1.0 yd3 (0.4-0.8 m3)	0.78-1.0 yd3 (0.6-0.8 m3)	0.78-1.3 yd3 (0.6-1.0 m3)	1.3-1.8 yd3 (1.0-1.4 m3)
<b>Generator</b>	17 kW	20 kW	30 kW	30 kW

\*Grapple selection may vary depending on the material being handled, machine lifting capacity and operating conditions.



	<b>RHL340 E</b>	<b>RHL350 E</b>	<b>RHL360 E</b>	<b>RHL380 D</b>
<b>Engine</b>	173 hp (129 kW)	214 hp (160 kW)	254 hp (190 kW)	366 hp (273 kW)
<b>Weight</b>	55,115-66,139 lbs (25-30 t)	77,162-81,571 lbs (35-37 t)	108,026-114,640 lbs (49-52 t)	150,355-160,937 lbs (68.2-73.0 t)
<b>Reach</b>	40.0-45.0 ft (12.2-13.7 m)	45.9-52.5 ft (14.0-16.0 m)	54.1-59.0 ft (16.5-18.0 m)	60.7-72.2 ft (18.5-22.0 m)
<b>Grapple*</b>	0.78-1.0 yd3 (0.6-0.8 m3)	0.78-1.0 yd3 (0.6-0.8 m3)	0.78-1.3 yd3 (0.6-1.0 m3)	1.3-1.8 yd3 (1.0-1.4 m3)
<b>Generator</b>	17 kW	20 kW	30 kW	30 kW

\*Grapple selection may vary depending on the material being handled, machine lifting capacity and operating conditions.

## terex.com

Effective Date: March 2013. Product specifications and prices are subject to change without notice or obligation. The photographs and/or drawings in this document are for illustrative purposes only. Refer to the appropriate Operator's Manual for instructions on the proper use of this equipment. Failure to follow the appropriate Operator's Manual when using our equipment or to otherwise act irresponsibly may result in serious injury or death. The only warranty applicable to our equipment is the standard written warranty applicable to the particular product and sale and Terex makes no other warranty, express or implied. Products and services listed may be trademarks, service marks or trade-names of Terex Corporation and/or its subsidiaries in the USA and other countries. All rights are reserved. Terex is a registered trademark of Terex Corporation in the USA and many other countries. © 2013 Terex Corporation.

Terex Construction 8800 Rostin Road, Southaven, MS 38671  
1 888 90 TERE (83739) • [www.terex.com](http://www.terex.com)