

DIESEL ENGINE

| | |
|---------------------|-------------------------------------|
| Manufacturer & type | Deutz-BF6M 1015 C |
| Design | 6-cylinder turbocharged |
| Engine output | 337 HP (248 kW) |
| Nominal speed | 1.800 rpm |
| Displacement | 3.7 US gal (12 l) |
| Cooling system | Water and charge air cooling. |
| Emission standards | COM II/TIER II |
| Air filter design | Two-stage filter with safety valve. |
| Fuel tank | 238 US gal (900 l) |

SWING SYSTEM

| | |
|---------------------------|--|
| Ring gear | Internally toothed ring gear. |
| Drive | 3-stage planetary gear with integrated multi-disc brake. |
| Uppercarriage swing speed | 0 - 6 rpm |

UNDERCARRIAGE

| | |
|---|--|
| <ul style="list-style-type: none"> • Front axle: Rigid mounted steering axle in planetary gear design with integrated drum brakes. Max. steering angle 30°. • Rear axle: Oscillating planetary gear axle with integrated drum brakes and oscillat. axle lock to be engaged if required. | |
| Stabilizers | 4-point stabilizers |
| Twin tires | Solid rubber, elastic tires 14.00 - 24 |

ELECTRICAL SYSTEM

| | |
|-------------------|---|
| Operating voltage | 24 V |
| Batteries | 2 x 12 V / 143 Ah (to EN) |
| Lighting | 2 uppercarriage-mounted headlamps, 2 boom-mounted and 2 dipperstick-mounted working floodlights. Rear side-marker lamps and direction indicators. |
| Option | generator system 30 kW |

BRAKES

| | |
|---------------|--|
| Service brake | Hydraulic single-circuit braking system acting on all four wheel pairs. |
| Parking brake | Hydraulic disc brake on rear axle also acting on the front axle through the propeller shaft. |

TRAVEL DRIVE

| | |
|--|--------------------------|
| <ul style="list-style-type: none"> • Hydrostatic drive through transfer gear with two infinitely variable axial piston motors and directly mounted travel brake valves. | |
| Travel speed / max. gradeability | 7 mp/h (0-11 km/h) / 38% |
| Turning radius | 32.5" (9.9 m) |

HYDRAULIC SYSTEM

| | |
|--|--------------------------------------|
| <ul style="list-style-type: none"> • Single-circuit hydraulic system with load-sensing and flow-on-demand-controls; optimum use of the available engine output through power management control. • Regeneration function for lift and stick cylinders. • Hydraulic oil level sensor provided as standard. • Separate oil cooler with large cooling surface. • Hydraulic filter elements incorporated in oil tank. • Auxiliary pumps: Open circuit for auxiliary consumers. | |
| Max. pump capacity | 247.3 US gal (936 l)/min (1.800 rpm) |
| Max. operating pressure | 5220 psi (360 bar) |
| Hydraulic oil tank | 206 US gal (780 l) |

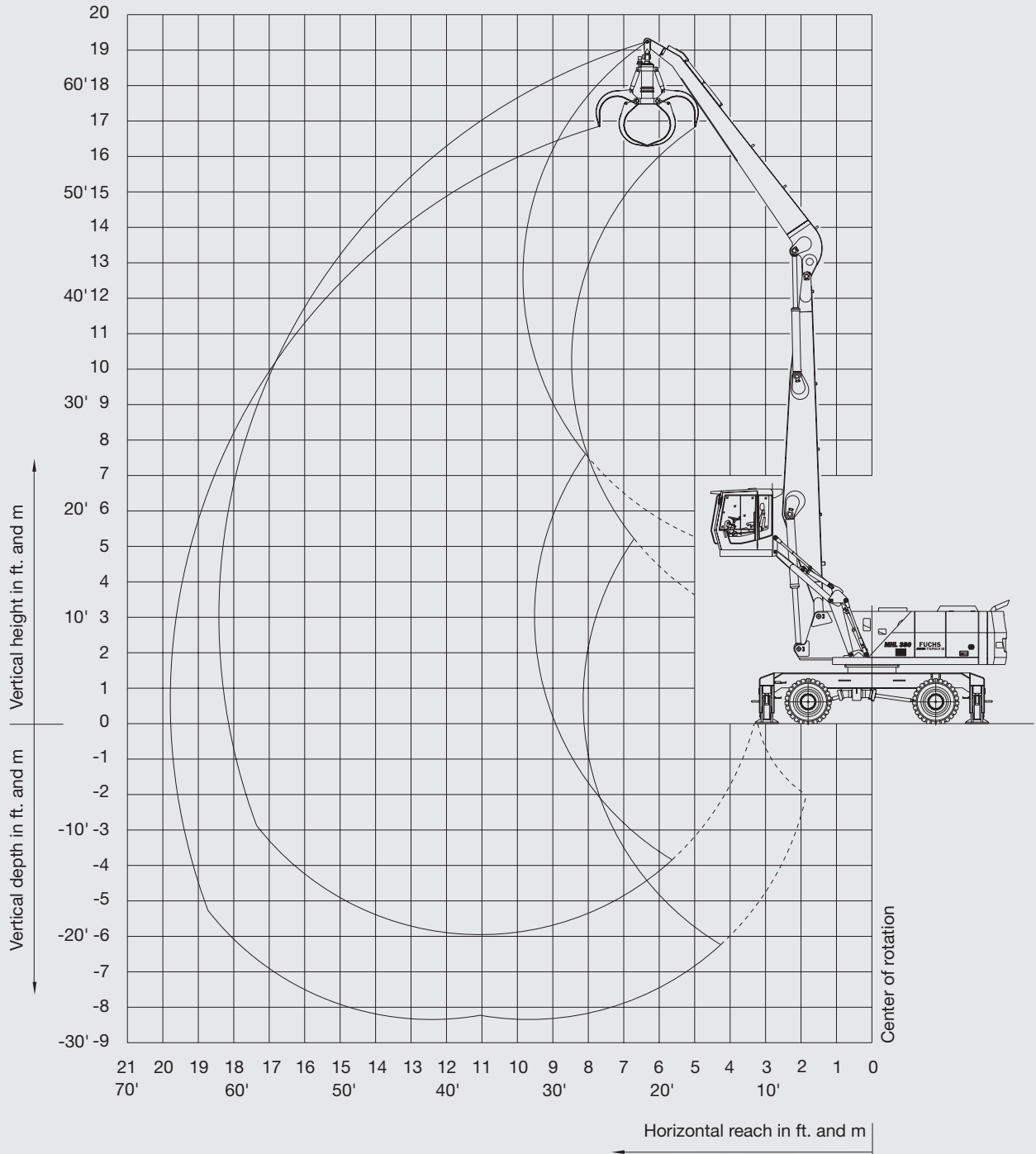
OPERATING WEIGHTS

| | |
|---|-------------------------|
| Basic machine including work equipment (including 1.0 m ³ /1.3 yd ³ cactus grab and generator system) | |
| Reach 60.7" (18.5 m) straight | 143,300 lbs (65.000 kg) |
| Reach 68.9" (21.0 m) straight | 144,402 lbs (65.500 kg) |
| Reach 68.9" (21.0 m) monobloc | 145,505 lbs (66.000 kg) |

WORKING DIAGRAM

MHL 380 (reach 60.7"/18.5 m)

- Work equipment: box-type boom straight 31.5"/9.6 m, dipperstick 26.3"/8.0 m.





LIFTING CAPACITY

MHL 380 (reach 60.7"/18.5 m)

- Work equipment: box-type boom straight 31.5"/9.6 m, dipperstick 26.2"/8.0 m.

| Height in ft. | Undercarriage stabilizers | Reach in ft. | | | | | | | | |
|---------------|---------------------------|-------------------|-------------------|-------------------|-------------------|-------------------|-------------------|-------------------|-------------------|-------------------|
| | | 20 | 25 | 30 | 35 | 40 | 45 | 50 | 55 | 60 |
| 60 | non-supported | | | (20,500*) | | | | | | |
| | 4-pt. supported | | | 20,500* (20,500*) | | | | | | |
| 55 | non-supported | | | | (22,040*) | | | | | |
| | 4-pt. supported | | | | 22,040* (22,040*) | | | | | |
| 50 | non-supported | | | | (25,570) | (20,500) | | | | |
| | 4-pt. supported | | | | 26,670* (26,670*) | 22,040* (22,040*) | | | | |
| 45 | non-supported | | | | (26,010) | (20,720) | (16,970) | | | |
| | 4-pt. supported | | | | 26,450* (26,450*) | 24,690* (24,690*) | 20,940* (20,940*) | | | |
| 40 | non-supported | | | | (26,010) | (20,940) | (16,970) | (14,100) | | |
| | 4-pt. supported | | | | 26,230* (26,230*) | 24,470* (24,470*) | 23,140* (23,140*) | 18,730* (18,730*) | | |
| 35 | non-supported | | | | (25,790) | (20,720) | (16,970) | (14,100) | (11,680) | |
| | 4-pt. supported | | | | 26,670* (26,670*) | 24,910* (24,910*) | 23,140* (23,140*) | 21,600* (21,600*) | 14,330* (14,330*) | |
| 30 | non-supported | | | | (25,350) | (20,500) | (16,750) | (13,880) | (11,680) | |
| | 4-pt. supported | | | | 27,770* (27,770*) | 25,570* (25,570*) | 23,580* (23,580*) | 21,160 (21,820*) | 18,070 (19,180*) | |
| 25 | non-supported | | | (31,300) | (24,690) | (19,840) | (16,530) | (13,660) | (11,680) | |
| | 4-pt. supported | | | 32,400* (32,400*) | 29,100* (29,100*) | 26,230* (26,230*) | 24,250* (24,030*) | 20,940 (22,040*) | 18,070 (20,500*) | |
| 20 | non-supported | | (39,900) | (29,980) | (23,800) | (19,400) | (16,090) | (13,440) | (11,460) | (9,700) |
| | 4-pt. supported | | 41,000* (41,000*) | 35,050* (35,050*) | 30,860* (30,860*) | 27,330* (27,330*) | 24,470* (24,690*) | 20,720 (22,480*) | 17,850 (20,500*) | 14,330* (14,330*) |
| 15 | non-supported | (52,020) | (37,250) | (28,430) | (22,700) | (18,510) | (15,430) | (13,220) | (11,240) | (9,700) |
| | 4-pt. supported | 59,740* (59,740*) | 46,510* (46,510*) | 38,360* (38,360*) | 32,620* (32,620*) | 28,660* (28,660*) | 23,800 (25,350*) | 20,280 (22,700*) | 17,630 (20,720*) | 15,430 (16,750*) |
| 10 | non-supported | (47,170) | (34,610) | (26,690) | (21,600) | (17,850) | (14,990) | (12,780) | (11,020) | (9,470) |
| | 4-pt. supported | 68,560* (68,560*) | 51,140* (51,140*) | 40,780* (40,780*) | 33,730 (34,170*) | 27,770 (29,760*) | 23,360 (26,010*) | 20,060 (23,140*) | 17,410 (20,500*) | 14,990 (17,850*) |
| 5 | non-supported | (31,970*) | (32,180) | (25,350) | (20,500) | (17,190) | (14,550) | (12,340) | (10,800) | (9,470) |
| | 4-pt. supported | 32,180* (32,180*) | 53,350 (53,790*) | 40,780 (42,540*) | 32,620 (35,490*) | 26,890 (30,200*) | 23,920 (26,450*) | 19,620 (23,140*) | 17,190 (20,280*) | 14,990 (17,630*) |
| 0 | non-supported | (24,910*) | (30,420) | (24,030) | (19,840) | (16,530) | (14,100) | (12,120) | (10,580) | (9,250) |
| | 4-pt. supported | 24,910* (24,910*) | 51,360 (54,670*) | 39,460 (43,330*) | 31,710 (35,710*) | 26,230 (30,420*) | 22,260 (26,230*) | 19,400 (22,920*) | 16,970 (19,840*) | 14,990 (16,530*) |
| -5 | non-supported | (24,690*) | (29,540) | (23,360) | (19,180) | (16,090) | (13,660) | (11,900) | (10,360) | |
| | 4-pt. supported | 24,690* (24,690*) | 43,650* (43,650*) | 38,360 (42,540*) | 31,080 (35,490*) | 25,790 (29,980*) | 22,040 (25,570*) | 19,180 (22,260*) | 16,750 (18,950*) | |
| -10 | non-supported | (26,230*) | (29,100) | (22,920) | (18,730) | (15,870) | (13,440) | (11,680) | (10,360) | |
| | 4-pt. supported | 26,230* (26,230*) | 41,220* (41,220*) | 37,910 (40,340*) | 30,640 (33,950*) | 25,570 (28,660*) | 21,820 (24,470*) | 18,950 (20,720*) | 16,750* (16,970*) | |
| -15 | non-supported | | (28,880) | (22,700) | (18,510) | (15,650) | (13,440) | (11,680) | | |
| | 4-pt. supported | | 41,880* (41,880*) | 37,030* (37,030*) | 30,420 (31,080*) | 25,350 (26,010*) | 21,600 (22,260*) | 18,070* (18,070*) | | |

| Height in m | Undercarriage stabilizers | Reach in m | | | | | | | | |
|-------------|---------------------------|---------------|---------------|---------------|---------------|---------------|---------------|-------------|-------------|-------------|
| | | 6 | 7,5 | 9 | 10,5 | 12 | 13,5 | 15 | 16,5 | 18 |
| 18 | non-supported | | | (9.3*) | | | | | | |
| | 4-pt. supported | | | 9.3* (9.3*) | | | | | | |
| 16.5 | non-supported | | | | (10.0*) | | | | | |
| | 4-pt. supported | | | | 10.0* (10.0*) | | | | | |
| 15 | non-supported | | | | (11.6) | (9.3) | | | | |
| | 4-pt. supported | | | | 12.1* (12.1*) | 10.0* (10.0*) | | | | |
| 13.5 | non-supported | | | | (11.8) | (9.4) | (7.7) | | | |
| | 4-pt. supported | | | | 12.0* (12.0*) | 11.2* (11.2*) | 9.5* (9.5*) | | | |
| 12 | non-supported | | | | (11.8) | (9.5) | (7.7) | (6.4) | | |
| | 4-pt. supported | | | | 11.9* (11.9*) | 11.1* (11.1*) | 10.5* (10.5*) | 8.5* (8.5*) | | |
| 10.5 | non-supported | | | | (11.7) | (9.4) | (7.7) | (6.4) | (5.3) | |
| | 4-pt. supported | | | | 12.1* (12.1*) | 11.3* (11.3*) | 10.5* (10.5*) | 9.8* (9.8*) | 6.5* (6.5*) | |
| 9 | non-supported | | | | (11.5) | (9.3) | (7.6) | (6.3) | (5.3) | |
| | 4-pt. supported | | | | 12.6* (12.6*) | 11.6* (11.6*) | 10.7* (10.7*) | 9.6 (9.9*) | 8.2 (8.7*) | |
| 7.5 | non-supported | | | (14.2) | (11.2) | (9.0) | (7.5) | (6.2) | (5.3) | |
| | 4-pt. supported | | | 14.7* (14.7*) | 13.2* (13.2*) | 11.9* (11.9*) | 11.0* (10.9*) | 9.5 (10.0*) | 8.2 (9.3*) | |
| 6 | non-supported | | (18.1) | (13.6) | (10.8) | (8.8) | (7.3) | (6.1) | (5.2) | (4.4) |
| | 4-pt. supported | | 18.6* (18.6*) | 15.9* (15.9*) | 14.0* (14.0*) | 12.4* (12.4*) | 11.1 (11.2*) | 9.4 (10.2*) | 8.1 (9.3*) | 6.5* (6.5*) |
| 4.5 | non-supported | (23.6) | (16.9) | (12.9) | (10.3) | (8.4) | (7.0) | (6.0) | (5.1) | (4.4) |
| | 4-pt. supported | 27.1* (27.1*) | 21.1* (21.1*) | 17.4* (17.4*) | 14.8* (14.8*) | 13.0* (13.0*) | 10.8 (11.5*) | 9.2 (10.3*) | 8.0 (9.4*) | 7.0 (7.6*) |
| 3 | non-supported | (21.4) | (15.7) | (12.2) | (9.8) | (8.1) | (6.8) | (5.8) | (5.0) | (4.3) |
| | 4-pt. supported | 31.1* (31.1*) | 23.2* (23.2*) | 18.5* (18.5*) | 15.3 (15.5*) | 12.6 (13.5*) | 10.6 (11.8*) | 9.1 (10.5*) | 7.9 (9.3) | 6.8 (8.1*) |
| 1.5 | non-supported | (14.6*) | (14.6) | (11.5) | (9.3) | (7.8) | (6.6) | (5.6) | (4.9) | (4.3) |
| | 4-pt. supported | 14.6* (14.6*) | 24.2 (24.4*) | 18.5 (19.3*) | 14.8 (16.1*) | 12.2 (13.7*) | 10.4 (12.0*) | 8.9 (10.5*) | 7.8 (9.2) | 6.8 (8.0*) |
| 0 | non-supported | (11.3*) | (13.8) | (10.9) | (9.0) | (7.5) | (6.4) | (5.5) | (4.8) | (4.2) |
| | 4-pt. supported | 11.3* (11.3*) | 23.3 (24.8*) | 17.9 (19.7*) | 14.4 (16.2*) | 11.9 (13.8*) | 10.1 (11.9*) | 8.8 (10.4*) | 7.7 (9.0*) | 6.8 (7.5*) |
| -1.5 | non-supported | (11.2*) | (13.4) | (10.6) | (8.7) | (7.3) | (6.2) | (5.4) | (4.7) | |
| | 4-pt. supported | 11.2* (11.2*) | 19.8* (19.8*) | 17.4 (19.3*) | 14.1 (16.1*) | 11.7 (13.6*) | 10.0 (11.6*) | 8.7 (10.1*) | 7.6 (8.6*) | |
| -3 | non-supported | (11.9*) | (13.2) | (10.4) | (8.5) | (7.2) | (6.1) | (5.3) | (4.7) | |
| | 4-pt. supported | 11.9* (11.9*) | 18.7* (18.7*) | 17.2 (18.3*) | 13.9 (15.4*) | 11.6 (13.0*) | 9.9 (11.1*) | 8.6 (9.4*) | 7.6 (7.7*) | |
| -4.5 | non-supported | | (13.1) | (10.3) | (8.4) | (7.1) | (6.1) | (5.3) | | |
| | 4-pt. supported | | 19.0* (19.0*) | 16.8* (16.8*) | 13.8 (14.1*) | 11.5 (11.8*) | 9.8 (10.1*) | 8.2* (8.2*) | | |

REMARKS

The values are stated in lbs. or tons (t). The pump pressure for this table is 5220 psi (360 bar). The values amount to 75 % of the static tipping load or 87 % of the hydraulic lifting force (marked *). When the machine is standing on solid and level ground, these values apply to slewing operations through 360°. The values in brackets apply in the lengthwise direction of the undercarriage. The values specified "non-supported" only apply when the load is hoisted above the front or rear axle.

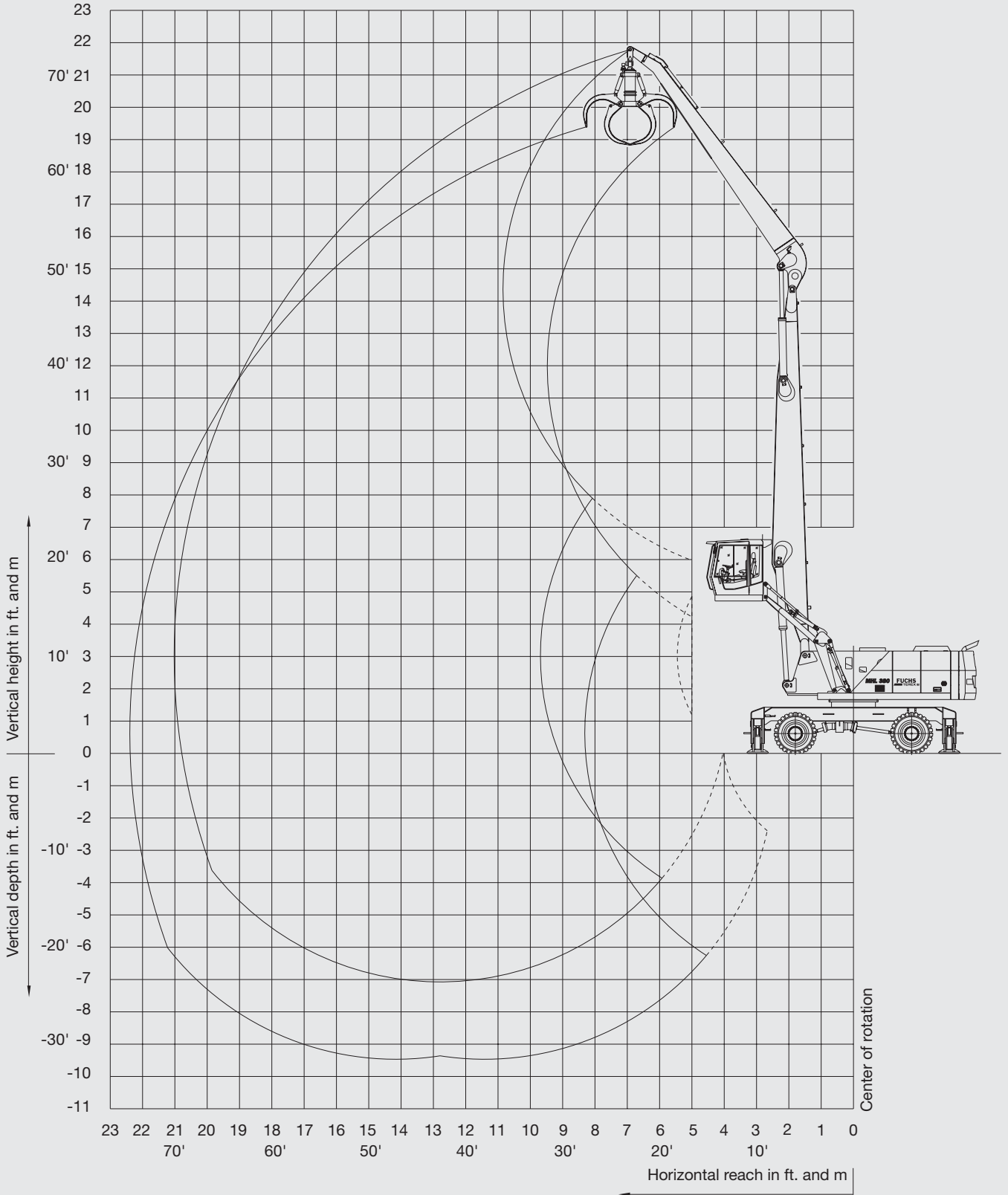
The weight of the attached load hoisting implement (grab, magnet, load hook) must be deducted from the carrying capacity values. If the FUCHS-TEREX quick-attach system is mounted on the boom, carrying capacity values are reduced by 1,763 lbs (800 kg).



WORKING DIAGRAM

MHL 380 (reach 68.9"/21.0 m)

- Work equipment: box-type boom straight 37.2"/11.35 m, dipperstick 29.3"/8.95 m.





LIFTING CAPACITY

MHL 380 (reach 68.9"/21.0 m)

• Work equipment: box-type boom straight 37.2"/11.35 m, dipperstick 29.3"/8.95 m.

Table with columns: Height in ft., Undercarriage stabilizers, Reach in ft. (20, 25, 30, 35, 40, 45, 50, 55, 60, 65). Rows show capacity for heights from 60ft down to 20ft.

Table with columns: Height in m, Undercarriage stabilizers, Reach in m (6, 7.5, 9, 10.5, 12, 13.5, 15, 16.5, 18, 19.5). Rows show capacity for heights from 18m down to 6m.

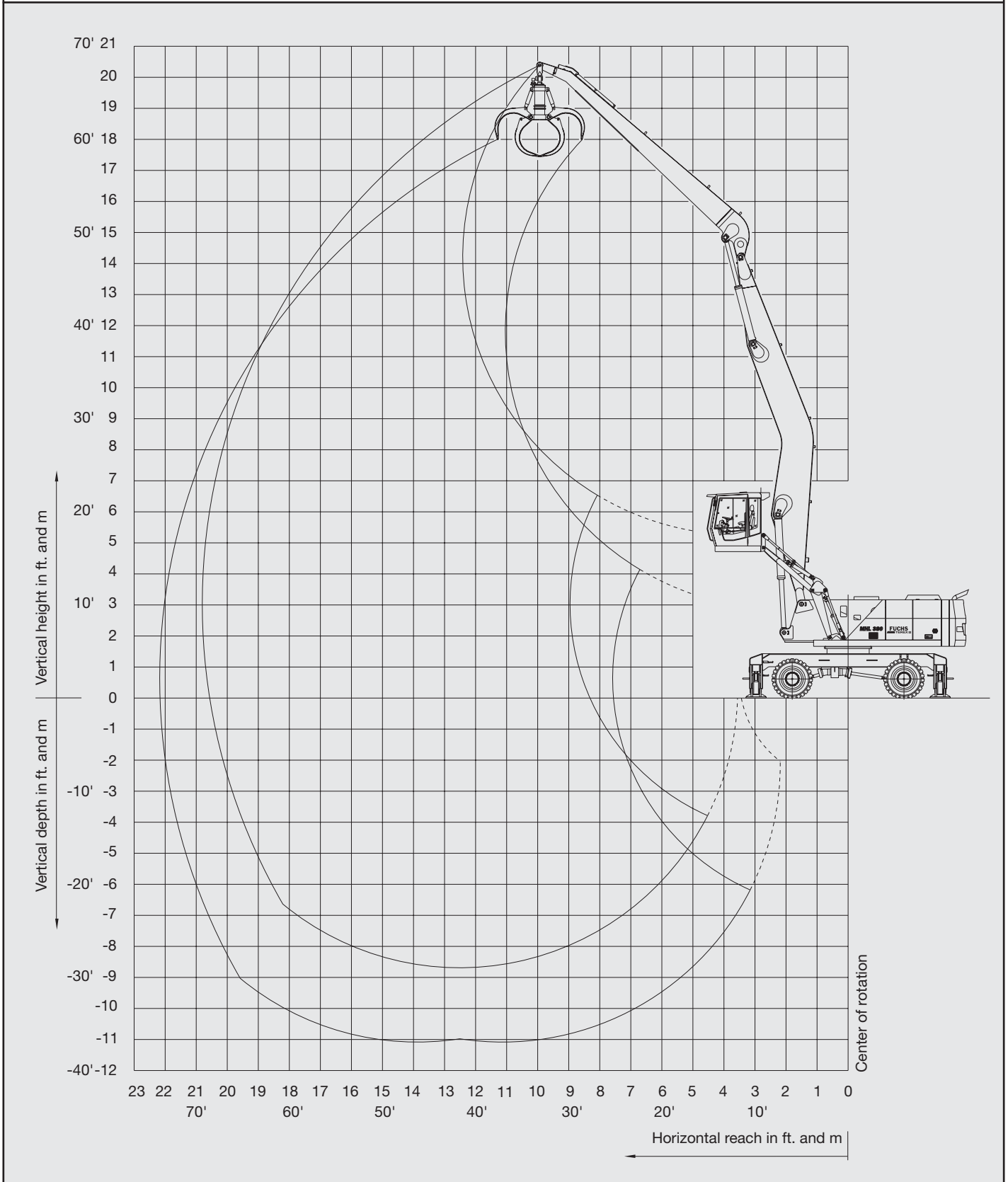
For additional remarks see notes on page 3.



WORKING DIAGRAM

MHL 380 (reach 68.9"/21.0 m)

- Work equipment: box-type boom monobloc 37.2"/11.35 m, dipperstick 29.3"/8.95 m.





LIFTING CAPACITY

MHL 380 (reach 68.9"/21.0 m)

- Work equipment: box-type boom monobloc 37.2"/11.35 m, dipperstick 29.3"/8.95 m.

| Height in m | Undercarriage stabilizers | Reach in ft. | | | | | | | | | | |
|-------------|---------------------------|--------------|----|----|----|-------------------|-------------------|-------------------|-------------------|-------------------|-------------------|--|
| | | 20 | 25 | 30 | 35 | 40 | 45 | 50 | 55 | 60 | 65 | |
| 60 | non-supported | | | | | (18,070*) | | | | | | |
| | 4-pt. supported | | | | | 18,070* (18,070*) | | | | | | |
| 55 | non-supported | | | | | | (17,190) | | | | | |
| | 4-pt. supported | | | | | | 17,850* (17,850*) | | | | | |
| 50 | non-supported | | | | | | (17,410) | (14,330) | | | | |
| | 4-pt. supported | | | | | | 17,410* (17,410*) | 16,750* (16,750*) | | | | |
| 45 | non-supported | | | | | | (17,410*) | (14,330) | (11,680) | | | |
| | 4-pt. supported | | | | | | 17,410* (17,410*) | 16,530* (16,530*) | 15,870* (15,870*) | | | |
| 40 | non-supported | | | | | | (17,410) | (14,330) | (11,900) | (9,700) | | |
| | 4-pt. supported | | | | | | 17,630* (17,630*) | 16,750* (16,750*) | 15,870* (15,870*) | 13,440* (13,440*) | | |
| 35 | non-supported | | | | | | (19,400*) | (16,970) | (14,100) | (11,680) | (9,700) | |
| | 4-pt. supported | | | | | | 19,400* (19,400*) | 18,070* (18,070*) | 16,970* (16,970*) | 15,870* (15,870*) | 15,210* (15,210*) | |
| 30 | non-supported | | | | | | (20,280*) | (16,530) | (13,660) | (11,460) | (9,700) | |
| | 4-pt. supported | | | | | | 20,280* (20,280*) | 18,730* (18,730*) | 17,190* (17,190*) | 16,310* (16,310*) | 15,210* (15,210*) | |
| 25 | non-supported | | | | | | (23,800*) | (19,620) | (16,090) | (13,220) | (9,700) | |
| | 4-pt. supported | | | | | | 23,800* (23,800*) | 21,380* (21,380*) | 19,400* (19,400*) | 17,850* (17,850*) | 16,530* (16,530*) | |
| 20 | non-supported | | | | | | | (18,510) | (15,430) | (12,780) | (10,800) | |
| | 4-pt. supported | | | | | | (35,490*) | (29,100) | (22,920) | (18,510) | (14,330) | |
| 15 | non-supported | | | | | | | (35,490*) | (29,540*) | (25,350*) | (22,480*) | |
| | 4-pt. supported | | | | | | 35,490* (35,490*) | 29,540* (29,540*) | 25,350* (25,350*) | 22,480* (22,480*) | 20,280* (20,280*) | |
| 10 | non-supported | | | | | | | (17,630) | (14,550) | (12,340) | (10,360) | |
| | 4-pt. supported | | | | | | 54,010* (54,010*) | 40,340* (40,340*) | 32,620* (32,620*) | 27,330* (27,330*) | 23,800* (23,800*) | |
| 5 | non-supported | | | | | | | (29,540*) | (31,520) | (24,690) | (19,840) | |
| | 4-pt. supported | | | | | | 29,540* (29,540*) | 44,530* (44,530*) | 35,270* (35,270*) | 29,100* (29,100*) | 24,910* (24,910*) | |
| 0 | non-supported | | | | | | | (17,410*) | (28,430) | (22,700) | (18,510) | |
| | 4-pt. supported | | | | | | 17,410* (17,410*) | 40,340* (40,340*) | 37,250* (37,250*) | 30,640* (30,640*) | 25,350* (25,350*) | |
| -5 | non-supported | | | | | | | (15,870*) | (26,450) | (21,160) | (17,410) | |
| | 4-pt. supported | | | | | | 15,870* (15,870*) | 29,100* (29,100*) | 36,370* (36,370*) | 29,320* (29,320*) | 24,470* (24,470*) | |
| -10 | non-supported | | | | | | | (16,750*) | (25,350) | (20,060) | (16,530) | |
| | 4-pt. supported | | | | | | 16,750* (16,750*) | 26,230* (26,230*) | 35,050* (35,050*) | 28,430* (28,430*) | 23,800* (23,800*) | |
| -15 | non-supported | | | | | | | (18,290*) | (24,690) | (19,620) | (16,090) | |
| | 4-pt. supported | | | | | | 18,290* (18,290*) | 26,010* (26,010*) | 34,390* (34,390*) | 27,770* (27,770*) | 23,140* (23,140*) | |
| -20 | non-supported | | | | | | | (20,060*) | (24,690) | (19,180) | (15,650) | |
| | 4-pt. supported | | | | | | 20,060* (20,060*) | 26,670* (26,670*) | 34,170* (34,170*) | 27,550* (27,550*) | 22,920* (22,920*) | |
| -25 | non-supported | | | | | | | (20,060*) | (24,690) | (19,180) | (15,650) | |
| | 4-pt. supported | | | | | | 20,060* (20,060*) | 26,670* (26,670*) | 34,170* (34,170*) | 27,550* (27,550*) | 22,920* (22,920*) | |

| Height in m | Undercarriage stabilizers | Reach in m | | | | | | | | | | |
|-------------|---------------------------|------------|-----|---|------|----|------|----|------|----|------|---------------|
| | | 6 | 7.5 | 9 | 10.5 | 12 | 13.5 | 15 | 16.5 | 18 | 19.5 | |
| 18 | non-supported | | | | | | | | | | | (8.2*) |
| | 4-pt. supported | | | | | | | | | | | 8.2* (8.2*) |
| 16.5 | non-supported | | | | | | | | | | | (7.8) |
| | 4-pt. supported | | | | | | | | | | | 8.1* (8.1*) |
| 15 | non-supported | | | | | | | | | | | (7.9) |
| | 4-pt. supported | | | | | | | | | | | 7.9* (7.9*) |
| 13.5 | non-supported | | | | | | | | | | | (6.5) |
| | 4-pt. supported | | | | | | | | | | | 7.9* (7.9*) |
| 12 | non-supported | | | | | | | | | | | (6.5) |
| | 4-pt. supported | | | | | | | | | | | 7.9* (7.9*) |
| 10.5 | non-supported | | | | | | | | | | | (6.5) |
| | 4-pt. supported | | | | | | | | | | | 7.9* (7.9*) |
| 9 | non-supported | | | | | | | | | | | (6.2) |
| | 4-pt. supported | | | | | | | | | | | 9.2* (9.2*) |
| 7.5 | non-supported | | | | | | | | | | | (10.8*) |
| | 4-pt. supported | | | | | | | | | | | 9.2* (9.2*) |
| 6 | non-supported | | | | | | | | | | | (10.8*) |
| | 4-pt. supported | | | | | | | | | | | 9.7* (9.7*) |
| 4.5 | non-supported | | | | | | | | | | | (16.1*) |
| | 4-pt. supported | | | | | | | | | | | 16.1* (16.1*) |
| 3 | non-supported | | | | | | | | | | | (13.2) |
| | 4-pt. supported | | | | | | | | | | | 13.2* (13.2*) |
| 1.5 | non-supported | | | | | | | | | | | (12.9) |
| | 4-pt. supported | | | | | | | | | | | 12.9* (12.9*) |
| 0 | non-supported | | | | | | | | | | | (12.0) |
| | 4-pt. supported | | | | | | | | | | | 12.0* (12.0*) |
| -1.5 | non-supported | | | | | | | | | | | (11.5) |
| | 4-pt. supported | | | | | | | | | | | 11.5* (11.5*) |
| -3 | non-supported | | | | | | | | | | | (11.2) |
| | 4-pt. supported | | | | | | | | | | | 11.2* (11.2*) |
| -4.5 | non-supported | | | | | | | | | | | (11.2) |
| | 4-pt. supported | | | | | | | | | | | 11.2* (11.2*) |
| -6 | non-supported | | | | | | | | | | | (11.2) |
| | 4-pt. supported | | | | | | | | | | | 11.2* (11.2*) |
| -7.5 | non-supported | | | | | | | | | | | (11.2) |
| | 4-pt. supported | | | | | | | | | | | 11.2* (11.2*) |

For additional remarks see notes on page 3.

CAB

- Hydraulically height-adjustable cab with max. eye level of 20'6.2 m, independent horizontal advance of 7.2'2.2 m, human-engineered, functional design and excellent all-round visibility.
- Air-cushioned comfort seat with pneumatically adjustable lumbar support, safety belt and headrest. Seat heating available on request. The seat meets EC-safety and health requirements (Directive 89/392/EEC, Paragraph 3.2.2). Seat position, seat inclination and seat cushion multi-adjust-

- table in line with position of armrests and pilot control units.
- 3-setting fan for hot water heating, 4 adjustable defroster nozzles.
- Tilt and height-adjustable steering column; front windshield slideable under cab roof, with pull-down sunblind; lift-up skylight on cab roof.
- Air conditioning as standard.
- Sound power level (guaranteed) $LW(A) = 106 \text{ dB(A)}$.

OFFICIAL HOMOLOGATION

- Certification according to CE regulations.

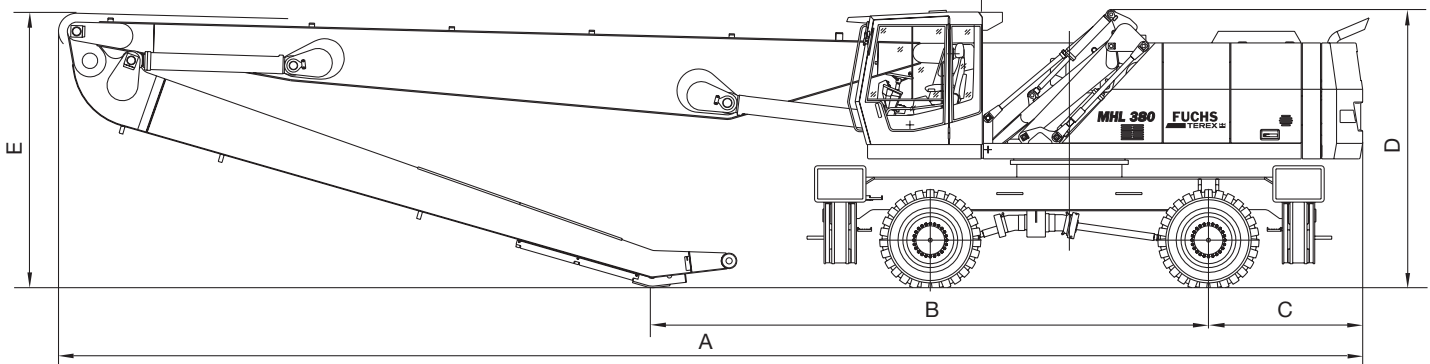
TRANSPORT DIMENSIONS

| Dimension mm/in. | Reach (work equipment) | | |
|---------------------|----------------------------|----------------------------|----------------------------|
| | 60.7'/18.5 m (straight) | 68.9'/21.0 m (straight) | 68.9'/21.0 m (monobloc) |
| A | 590'/15.005 | 665'/16.880 | 656'/16.670 |
| B | 240'/6.085 | 283'/7.195 | 258'/6.555 |
| C | 78'/1.995 | 78'/1.995 | 78'/1.995 |
| D | 142'/3.600 | 142'/3.600 | 142'/3.600 |
| E | 124'/3.165 | 140'/3.555 | 147'/ 3.730 |

GRABS

- Cactus grabs (option) featuring capacities between 1.0 m³/1.3 yd³ up to 1.4 m³/1.8 yd³ in welded design, with internally toothed ring gear and welded grab jaws with wear-resistant tips.
- Clamshell grabs (option) provided according to job-site requirements.

Transport dimensions on flat-bed trailer



TEREX Fuchs

8800 Rostin Road
Southaven, MS 38671
USA

TOLL FREE: 1-888-201-6008
PHONE: 662-393-1800
FAX: 662-393-1700
WEB www.terex.com
EMAIL fuchs@fuchsus.com