

Scrap

ENGINE POWER	190hp (142 kw)
OPERATING WEIGHT	87,082 – 88,185 lbs (39,500 – 40,000 kg)
MAX REACH	44' 4" – 49' 2" (13.5 – 15m)
MAX LIFTING CAPACITY	33,750 – 33,950lbs (15,300 – 15,400 kg)



Specifications

Diesel Engine	
Manufacturer and model	Deutz-BF6M 1013 EC
Engine output	190 HP (142 kW)
Nominal speed	2,000 rpm
Displacement	436 cu in (7.2 l)
Cooling system	Water and charge air cooling
Design	6-cylinder turbocharged
Emission standards	COM II/TIER II
Air filter design	Two-stage filter with safety valve
Fuel capacity (usable)	92 US gallons (350 l)

Operating Weight	
Basic machine	87,082 lbs – 88,185 lbs
with work attachment	(39.5 t – 40 t)

Electrical System	
Operating voltage	24 V
Batteries	2 x 12 V / 100 Ah
Option	Generator system 13/20 kW

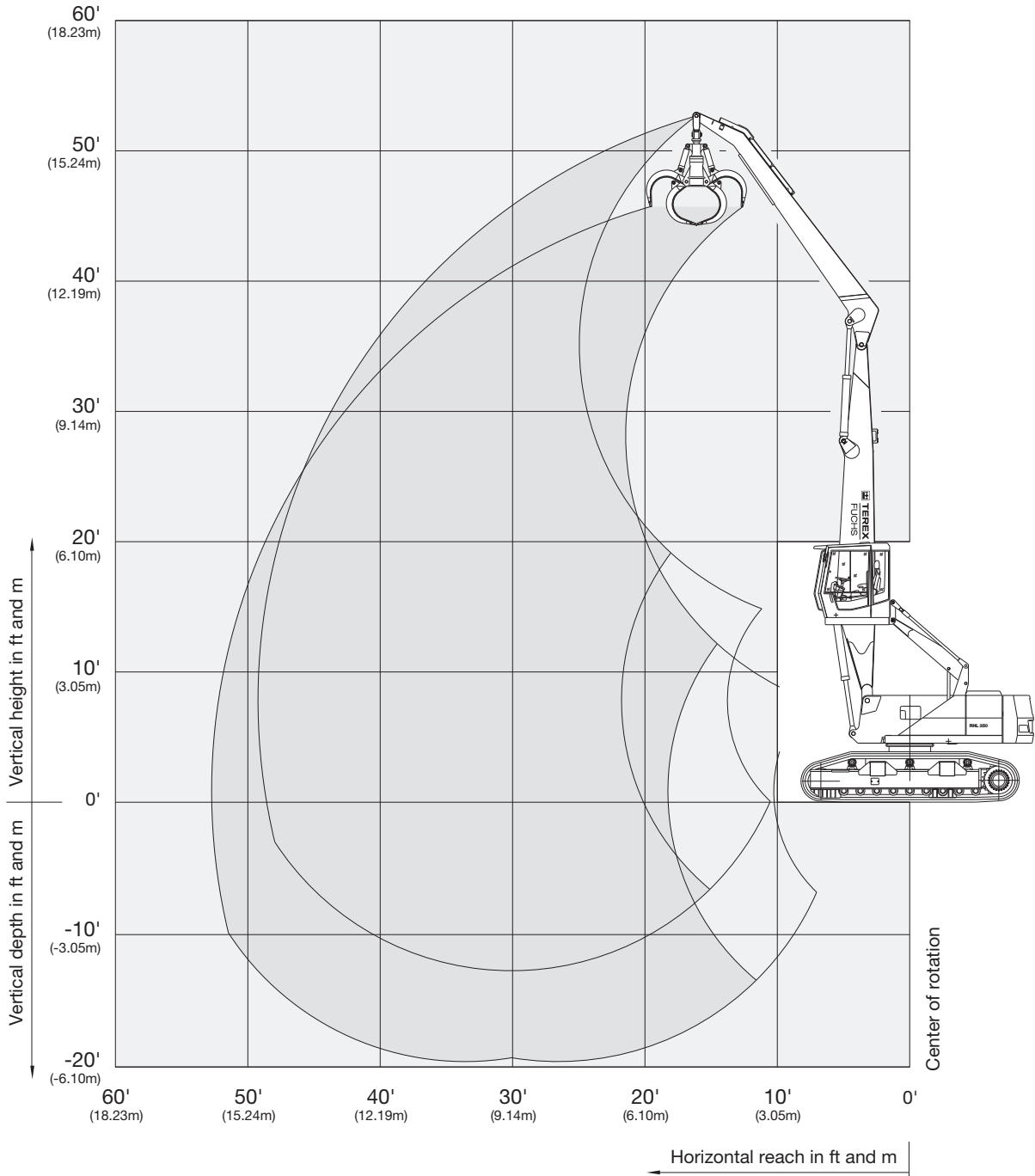
Swing System	
Ring gear	Internally toothed ball ring gear
Drive	Multi-stage planetary gear with integrated multi-disc brake
Upper carriage swing speed	0 – 8 rpm

Undercarriage	
9 track rollers and 3 carrier rollers per side, maintenance free, variable hydraulic drive for both three stage planetary drives. Hydraulic adjustable track width between 800 mm and 3800 mm.	
Travel speed	0 – 2.9 km/h
Ground pressure	8.3 N/cm ²
Automatic clutch brakes	

SCRAP
RHL 350

Working Range Diagram

RHL 350 reach 49' 2.4" (15 m)
 Work equipment: box-type boom 26' 10.8" (8.2 m), dipperstick 21' 3.6" (6.5 m)



Lifting Capacities

RHL 350 reach 49' 2.4" (15 m) (Lifting capacities in lbs)

Work equipment: box-type boom 26' 10.8" (8.2 m), dipperstick 21' 3.6" (6.5 m)

Height in feet	Undercarriage track width	Reach in feet								
		15'	20'	25'	30'	35'	40'	45'	50'	
40'	71"			13,000**	11,240	8,590				
	150"			13,000** (13,000**)	12,120** (12,120**)	11,680** (11,680**)				
35'	71"				11,240	8,810	7,050			
	150"				11,900** (11,900**)	11,240** (11,240**)	9,470 (10,800**)			
30'	71"			13,000**	11,240	8,810	7,050			
	150"			13,000** (13,000**)	11,900** (11,900**)	11,240** (11,240**)	9,700 (10,580**)			
25'	71"			13,440**	11,020	8,590	7,050	5,730		
	150"			13,440** (13,440**)	12,340** (12,340**)	11,460** (11,460**)	9,470 (10,580**)	7,390 (9,920**)		
20'	71"		16,970*	14,100	10,580	8,370	6,830	5,730		
	150"		16,970** (16,970**)	14,990** (14,990**)	13,220** (13,220**)	11,460 (11,900**)	9,470 (10,800**)	7,710 (10,140**)		
15'	71"	26,230**	18,290	13,440	10,360	8,150	6,610	5,510		
	150"	26,230** (26,230**)	20,060** (20,060**)	16,530** (16,530**)	14,100 (14,100**)	11,240 (12,560**)	9,250 (11,240**)	7,710 (10,140)		
10'	71"	25,130	16,970	12,560	9,700	7,930	6,390	5,510	4,620	
	150"	33,730** (33,730**)	23,580** (23,580**)	17,410 (18,290**)	13,440 (15,210**)	10,800 (13,000**)	9,030 (11,680**)	7,490 (9,920)	6,610 (8,590)	
5'	71"	12,340*	15,870	11,900	9,250	7,490	6,170	5,290	4,620	
	150"	12,340* (12,340*)	22,700 (26,230**)	16,750 (19,840**)	13,000 (16,310**)	10,580 (13,660**)	8,810 (11,460)	7,490 (9,700)	6,390 (8,590)	
0'	71"	10,140*	14,990	11,240	9,030	7,270	6,170	5,290		
	150"	10,140* (10,140*)	21,600 (26,670**)	16,090 (20,940**)	12,560 (16,750**)	10,360 (13,660)	8,590 (11,460)	7,270 (9,700)		
-5'	71"	11,240*	14,550	11,020	8,810	7,050	5,950	5,070		
	150"	11,240* (11,240*)	21,160 (22,040**)	15,650 (20,940**)	12,340 (16,530)	10,140 (13,440)	8,590 (11,240)	7,270 (9,700)		
-10'	71"		14,330	10,800	8,590	7,050	5,950			
	150"		21,160 (22,040**)	15,650 (20,060**)	12,340 (16,310**)	9,920 (13,220)	8,370 (11,240**)			

RHL 350 reach 49' 2.4" (15 m) (Lifting capacities in tons)

Work equipment: box-type boom 26' 10.8" (8.2 m), dipperstick 21' 3.6" (6.5 m)

Height in meters	Undercarriage track width	Reach in meters								
		4.5	6	7.5	9	10.5	12	13.5	15	
12	1,800 mm			5.9**	5.1	3.9				
	3,800 mm			5.9** (5.9**)	5.5** (5.5**)	5.3** (5.3**)				
10.5	1,800 mm				5.1	4.0	3.2			
	3,800 mm				5.4** (5.4**)	5.1** (5.1**)	4.3 (4.9**)			
9	1,800 mm			5.9**	5.1	4.0	3.2			
	3,800 mm			5.9** (5.9**)	5.4** (5.4**)	5.1** (5.1**)	4.4 (4.8**)			
7.5	1,800 mm			6.2**	5.0	3.9	3.2	2.6		
	3,800 mm			6.1** (6.1**)	5.6** (5.6**)	5.2** (5.2**)	4.3 (4.8**)	3.6 (4.5**)		
6	1,800 mm		7.8*	6.4	4.8	3.8	3.1	2.6		
	3,800 mm		7.7** (7.7**)	6.8** (6.8**)	6.0** (6.0**)	5.2 (5.4**)	4.3 (4.9**)	3.5 (4.6**)		
4.5	1,800 mm	11.9**	8.3	6.1	4.7	3.7	3.0	2.5		
	3,800 mm	11.9** (11.9**)	9.1** (9.1**)	7.5** (7.5**)	6.4 (6.4**)	5.1 (5.7**)	4.2 (5.1**)	3.5 (4.6)		
3	1,800 mm	11.4	7.7	5.7	4.4	3.6	2.9	2.5	2.1	
	3,800 mm	15.3** (15.3**)	10.7** (10.7**)	7.9 (8.3**)	6.1 (6.9**)	4.9 (5.9**)	4.1 (5.3**)	3.4 (4.5)	3.0 (3.9)	
1.5	1,800 mm	5.6*	7.2	5.4	4.2	3.4	2.8	2.4	2.1	
	3,800 mm	5.6* (5.6*)	10.3 (11.9**)	7.6 (9.0**)	5.9 (7.3**)	4.8 (6.2**)	4.0 (5.2)	3.4 (4.4)	2.9 (3.9)	
0	1,800 mm	4.6*	6.8	5.1	4.1	3.3	2.8	2.4		
	3,800 mm	4.6* (4.6*)	9.8 (12.1**)	7.3 (9.5**)	5.7 (7.6**)	4.7 (6.2)	3.9 (5.2)	3.3 (4.4)		
-1.5	1,800 mm	5.1*	6.6	5.0	4.0	3.2	2.7	2.3		
	3,800 mm	5.1* (5.1*)	9.6 (10.0**)	7.1 (9.5**)	5.6 (7.5)	4.6 (6.1)	3.9 (5.1)	3.3 (4.4)		
-3	1,800 mm		6.5	4.9	3.9	3.2	2.7			
	3,800 mm		9.6 (10.0**)	7.1 (9.1**)	5.6 (7.4**)	4.5 (6.0)	3.8 (5.1**)			

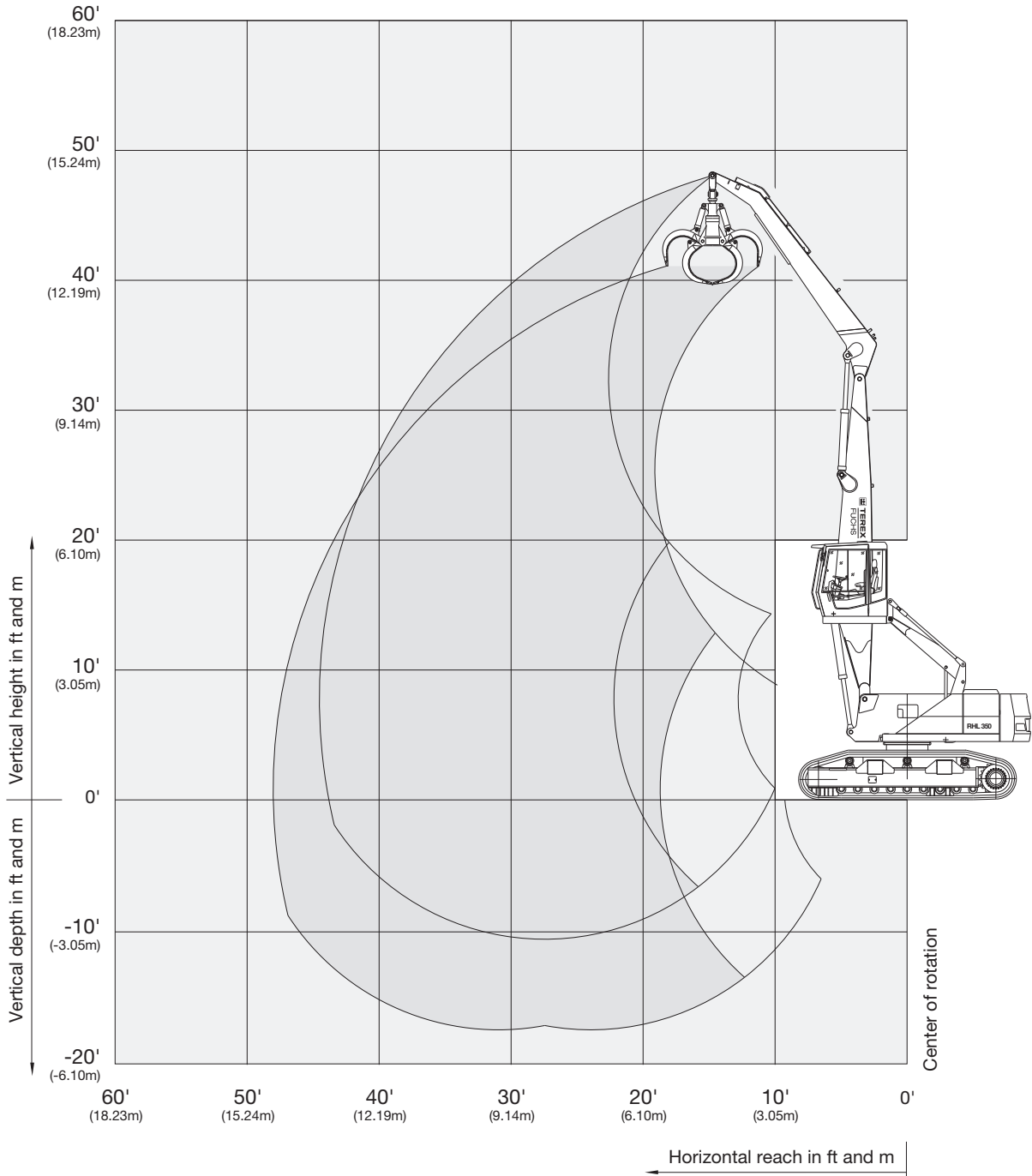
* Limited by dipper stick cylinders

** Limited by lift cylinders

The values are stated in pounds (lbs) or tons (t). The pump pressure for this table is 5220 psi (360 bar). The values amount to 75% of the static tipping load or 87% of the hydraulic lifting force. When the machine is standing on solid and level ground, these values apply to slewing operations through 360°. The values in brackets apply in the lengthwise direction of the undercarriage. The weight of the attached load hoisting implement (grab, magnet, load hook) must be deducted from the carrying capacity values. If the FUCHS-TEREX quick-attach system is mounted on the boom, carrying capacity values are reduced by 661 lbs (300 kg). In accordance with EC guidelines, hose-rupture safety valves on the lift cylinders and an overload warning device are required for crane operations.

Working Range Diagram

RHL 350 reach 44' 3.6" (13.5 m)
 Work equipment: box-type boom 24' 2.4" (7.4 m), dipperstick 19' (5.8 m)



Lifting Capacities

RHL 350 reach 44' 3.6" (13.5 m) (Lifting capacities in lbs)

Work equipment: box-type boom 24' 2.4" (7.4 m), dipperstick 19' (5.8 m)

Height in feet	Undercarriage track width	Reach in feet						
		15'	20'	25'	30'	35'	40'	45'
40'	71"			14,100				
	150"			14,770** (14,700**)				
35'	71"			13,880**	10,800	8,370		
	150"			13,880** (13,880**)	13,000** (13,000**)	10,800* (10,800*)		
30'	71"			13,660**	10,800	8,370		
	150"			13,660** (13,660**)	12,780** (12,780**)	11,460 (12,120**)		
25'	71"			14,330**	10,800	8,370	6,830	
	150"			14,330** (14,330**)	13,220** (13,220**)	11,460 (12,120**)	9,250 (11,460**)	
20'	71"		17,630*	13,880	10,580	8,370	6,610	
	150"		17,630* (17,630**)	15,430** (15,430**)	13,880** (13,880**)	11,240 (12,560**)	9,250 (11,460**)	
15'	71"	26,450**	18,290	13,220	10,140	8,150	6,610	
	150"	26,450** (26,450**)	20,500** (20,500**)	16,970** (16,970**)	13,880 (14,770**)	11,020 (13,000**)	9,030 (11,680**)	
10'	71"	25,350	17,190	12,560	9,700	7,710	6,390	5,290
	150"	33,950** (33,950**)	23,800** (23,800**)	17,410 (18,730**)	13,440 (15,650**)	10,800 (13,660**)	8,810 (11,680)	7,490 (9,920)
5'	71"	18,290*	16,090	11,900	9,250	7,490	6,170	5,290
	150"	18,290* (18,290*)	22,700 (26,670**)	16,750 (20,280**)	13,000 (16,530**)	10,580 (13,880)	8,810 (11,460)	7,490 (9,920)
0'	71"	13,880*	15,210	11,460	9,030	7,270	6,170	
	150"	13,880* (13,880*)	22,040 (27,990**)	16,310 (21,380**)	12,780 (16,970**)	10,360 (13,660)	8,590 (11,460)	
-5'	71"	14,990*	14,770	11,240	8,810	7,270	5,950	
	150"	14,990* (14,990*)	21,600 (27,550**)	15,870 (21,160**)	12,560 (16,530)	10,140 (13,440)	8,590 (11,240)	
-10'	71"			11,020	8,810			
	150"			15,870 (20,060**)	12,340 (16,090**)			

RHL 350 reach 44' 3.6" (13.5 m) (Lifting capacities in tons)

Work equipment: box-type boom 24' 2.4" (7.4 m), dipperstick 19' (5.8 m)

Height in meters	Undercarriage track width	Reach in meters						
		4.5	6	7.5	9	10.5	12	13.5
12	1,800 mm			6.4				
	3,800 mm			6.7** (6.7**)				
10.5	1,800 mm			6.3**	4.9	3.8		
	3,800 mm			6.3** (6.3**)	5.9** (5.9**)	4.9* (4.9*)		
9	1,800 mm			6.2**	4.9	3.8		
	3,800 mm			6.2** (6.2**)	5.8** (5.8**)	5.2 (5.5**)		
7.5	1,800 mm			6.5**	4.9	3.8	3.1	
	3,800 mm			6.5** (6.5**)	6.0** (6.0**)	5.2 (5.5**)	4.2 (5.2**)	
6	1,800 mm		8.0*	6.3	4.8	3.8	3.0	
	3,800 mm		8.0** (8.0**)	7.0** (7.0**)	6.3** (6.3**)	5.1 (5.7**)	4.2 (5.2**)	
4.5	1,800 mm	12.0**	8.3	6.0	4.6	3.7	3.0	
	3,800 mm	12.0** (12.0**)	9.3** (9.3**)	7.7** (7.7**)	6.3 (6.7**)	5.0 (5.9**)	4.1 (5.3**)	
3	1,800 mm	11.5	7.8	5.7	4.4	3.5	2.9	2.5
	3,800 mm	15.4** (15.4**)	10.8** (10.8**)	7.9 (8.5**)	6.1 (7.1**)	4.9 (6.2**)	4.0 (5.3)	3.4 (4.5)
1.5	1,800 mm	8.3*	7.3	5.4	4.2	3.4	2.8	2.4
	3,800 mm	8.3* (8.3*)	10.3 (12.1**)	7.6 (9.2**)	5.9 (7.5**)	4.8 (6.3)	4.0 (5.2)	3.4 (4.5)
0	1,800 mm	6.3*	6.9	5.2	4.1	3.3	2.8	
	3,800 mm	6.3* (6.3*)	10.0 (12.7**)	7.4 (9.7**)	5.8 (7.7**)	4.7 (6.2)	3.9 (5.2)	
-1.5	1,800 mm	6.8*	6.7	5.1	4.0	3.3	2.7	
	3,800 mm	6.8* (6.8*)	9.8 (12.5**)	7.2 (9.6**)	5.7 (7.5)	4.6 (6.1)	3.9 (5.1)	
-3	1,800 mm			5.0	4.0			
	3,800 mm			7.2 (9.1**)	5.6 (7.3**)			

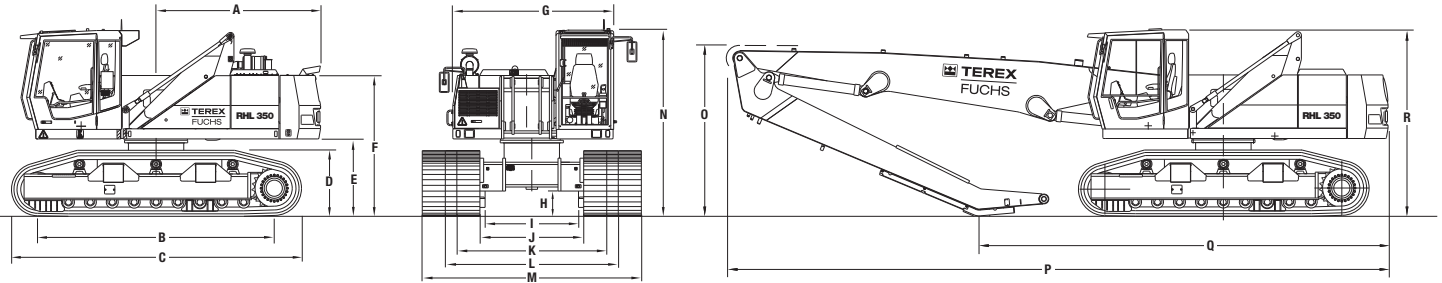
* Limited by dipper stick cylinders

** Limited by lift cylinders

The values are stated in pounds (lbs) or tons (t). The pump pressure for this table is 5220 psi (360 bar). The values amount to 75% of the static tipping load or 87% of the hydraulic lifting force. When the machine is standing on solid and level ground, these values apply to slewing operations through 360°. The values in brackets apply in the lengthwise direction of the undercarriage. The weight of the attached load hoisting implement (grab, magnet, load hook) must be deducted from the carrying capacity values. If the FUCHS-TEREX quick-attach system is mounted on the boom, carrying capacity values are reduced by 661 lbs (300 kg). In accordance with EC guidelines, hose-rupture safety valves on the lift cylinders and an overload warning device are required for crane operations.

Scrap RHL 350

Dimensions/Transport Dimensions



Dimensions

A	112" (2,850 mm)	H	17" (440 mm)
B	161" (4,100 mm)	I	64" (1,620 mm)
C	198" (5,030 mm)	J	71" (1,800 mm)
D	45" (1,145 mm)	K	102" (2,600 mm)
E	53" (1,343 mm)	L	118" (3,000 mm)
F	96" (2,445 mm)	M	150" (3,800 mm)
G	110" (2,790 mm)	N	128" (3,255 mm)

Transport Dimensions

	Maximum Reach	
	49' (15.0 m)	44' (13.5 m)
O	143" (3,650 mm)	118" (3,000 mm)
P	480" (12,200 mm)	450" (11,450 mm)
Q	291" (7,400 mm)	279" (7,100 mm)
R	128" (3,250 mm)	128" (3,250 mm)

Specifications

Hydraulic System

Single-circuit hydraulic system with load-sensing and flow-on-demand controls; optimum use of the available engine output through load sensing control	
Separate oil cooler with large cooling surface	
Hydraulic oil filter integrated in the oil tank	
Central greasing system as standard	
Hydraulic oil tank	100 US gal (380 l)
Maximum pump capacity	153.2 US gal/min (at 2,000 rpm) (580 l/min)
Maximum operating pressure	5220 psi (360 bar)

Brake System

Service brake	Hydraulic single-circuit braking system, acting on all four wheel pairs
Parking brake	Electrically operated disc brake, acting on both front and rear axle

Grabs

0.8 yd³/0.6 m³ cactus grab with cast central case and enclosed swing drive, grab jaws with wear-resistant grab liners and tips

Cab

Cab: Hydraulically height-adjustable cab with max. eye level of 18' 4.8" (5.6 m), human-engineered, functional design and excellent all-round visibility; tilt and height-adjustable steering column; front windshield slideable under cab roof, with pull-down sunblind; lift-up skylight on cab roof

Operator's seat: Air-cushioned comfort seat with pneumatically adjustable lumbar support, safety belt and headrest. Seat heating available on request. The seat meets EC-safety and health requirements (Directive 89/392/EEC, Paragraph 3.2.2). Seat position, seat inclination and seat cushion multi-adjustable in line with position of armrests and pilot control units

Heating: 3-setting fan for hot water heating, 4 adjustable defroster nozzles

Air condition: standard

Options: engine-independent heating, bulletproof glass, cab stone guard, stereo cassette radio

Official Homologation: Certification according to CE-regulations



TEREX Fuchs
8800 Rostin Road
Southaven, MS 38671
USA

Toll-Free: 1-888-201-6008
Phone: 662-393-1800
Fax: 662-393-1700
Web: www.terex.com
Email: sales@terexca.com

For more information, product demonstration or details on purchase, lease and rental plans, please contact your local TEREX Distributor.

Effective date: January 1, 2005. For further information, please contact your local distributor or the TEREX sales office listed. Product specifications are subject to change without notice or obligation. The photographs and drawings in this brochure are for illustrative purposes only. Refer to the appropriate Operator's Manual for instructions on the proper use of this equipment. Failure to follow the appropriate Operator's Manual when using our equipment or to otherwise act irresponsibly may result in serious injury or death. Prices and specifications subject to change without notice. The only warranty applicable is the standard written warranty applicable to the particular product and sale. TEREX makes no other warranty, expressed or implied. Products and services listed may be trademarks, service marks or trade-names of TEREX Corporation and/or its subsidiaries in the USA and other countries and all rights are reserved. "TEREX" is a Registered Trademark of TEREX Corporation in the USA and many other countries. Copyright ©2006 TEREX Corporation.

MHL 350D 2K 0306A Part #109209

Courtesy of Crane.Market