

# MODEL 8 HARBOUR CRANE

**CONSISTENT TOP PERFORMANCE**



**WORKS FOR YOU.™**

# A CARGO HANDLING CRANE IN A CLASS OF ITS OWN

## MODEL 8 HARBOUR CRANE

Terex® Gottwald Model 8 harbour cranes are extremely robust electrically driven cranes for very high-performance applications. As the largest cranes of the large crane family from Terex Port Solutions (TPS), they offer you our most powerful lifting capacity curves with lifting capacities of up to 200 t, impressive working radii of up to 58 m and lifting speeds of up to 140 m/min.

Terex® Gottwald Model 8 harbour cranes are designed for a particularly broad and demanding range of applications. In your universal or special-purpose terminal, they help you on vessels up to super Post-Panamax class to handle:

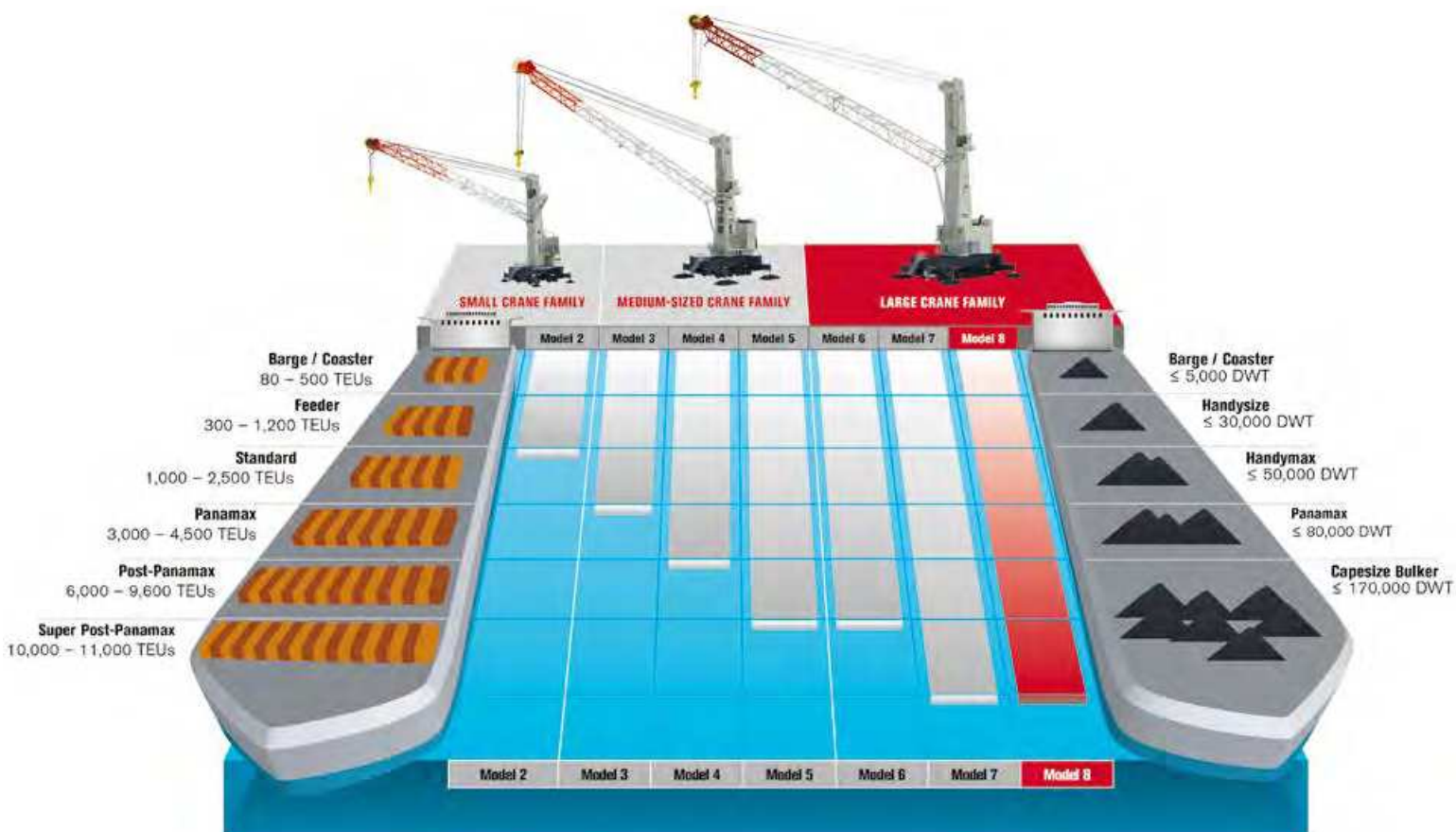
- ▶ containers,
- ▶ general cargo,
- ▶ bulk materials and
- ▶ project cargo.

### Variants for dedicated applications

With Model 8 harbour cranes, you benefit from a number of dedicated two-rope and four-rope grab variants with a wide working radius, e.g. for high-performance container twin-lift operation. High towers also permit handling of the highest container stacks on deck. The handling of extremely heavy project cargo of up to 400 t is carried out in tandem-lift operation. For the professional continuous handling of bulk materials, a 63-t grab curve is available.

Model 8 harbour cranes represent consistent top performance with the features you expect in a handling machine for productive and durable operation. Model 8 cranes are:

- ▶ versatile,
- ▶ easy to maintain,
- ▶ ergonomic and
- ▶ environmentally friendly.





**Model 8 as the four-rope grab variant for professional bulk handling**

# THE RIGHT CRANE FOR EVERY

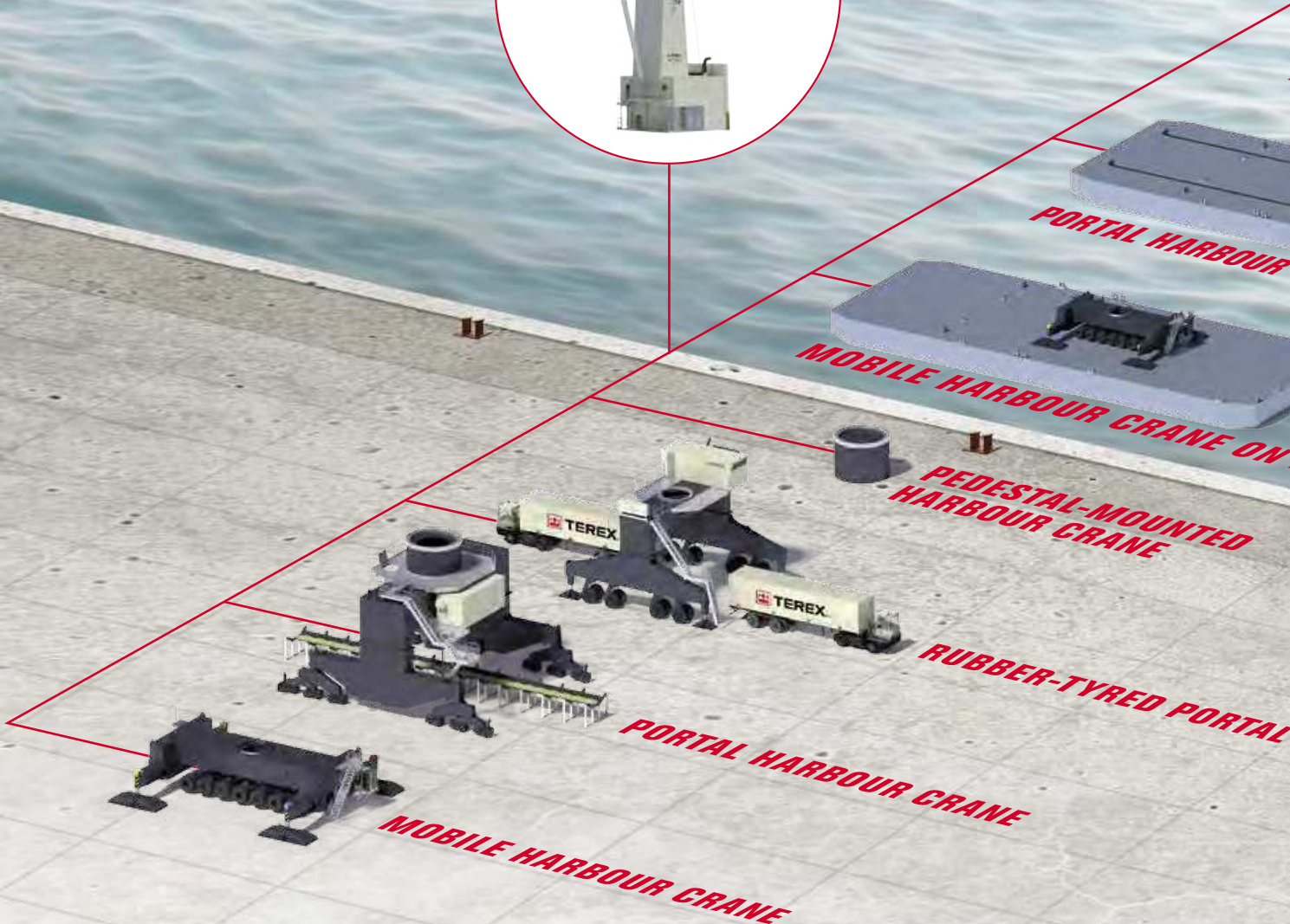
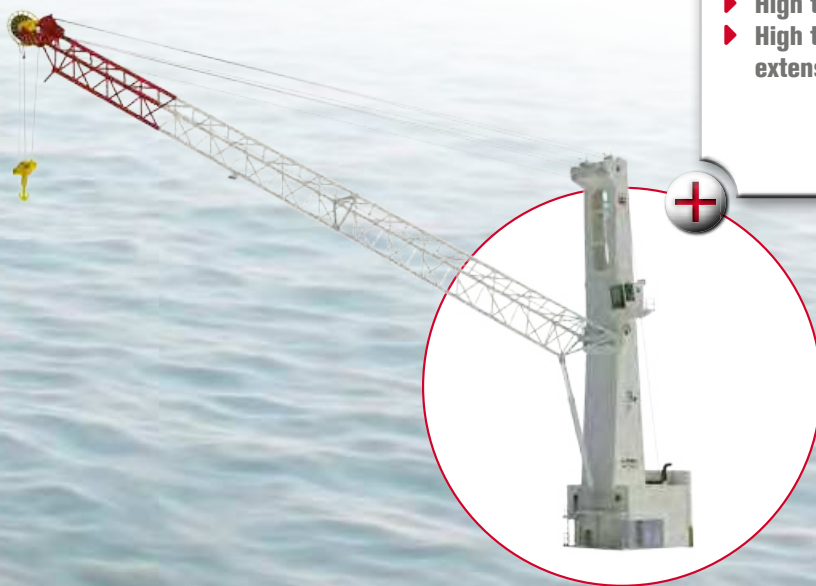
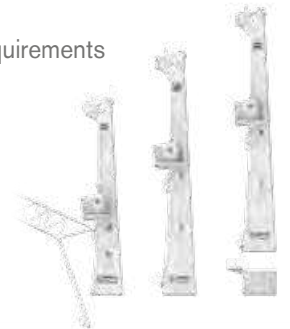
## MODEL 8 TYPES – HARD TO BEAT

The mobile harbour crane technology available from TPS is not restricted to the mobile harbour crane. As the industry's pioneer we create a modular system of harbour crane types on quays, rivers and on the open sea.

### Tower options

To suit individual requirements and applications:

- ▶ Short tower
- ▶ High tower
- ▶ High tower with extension



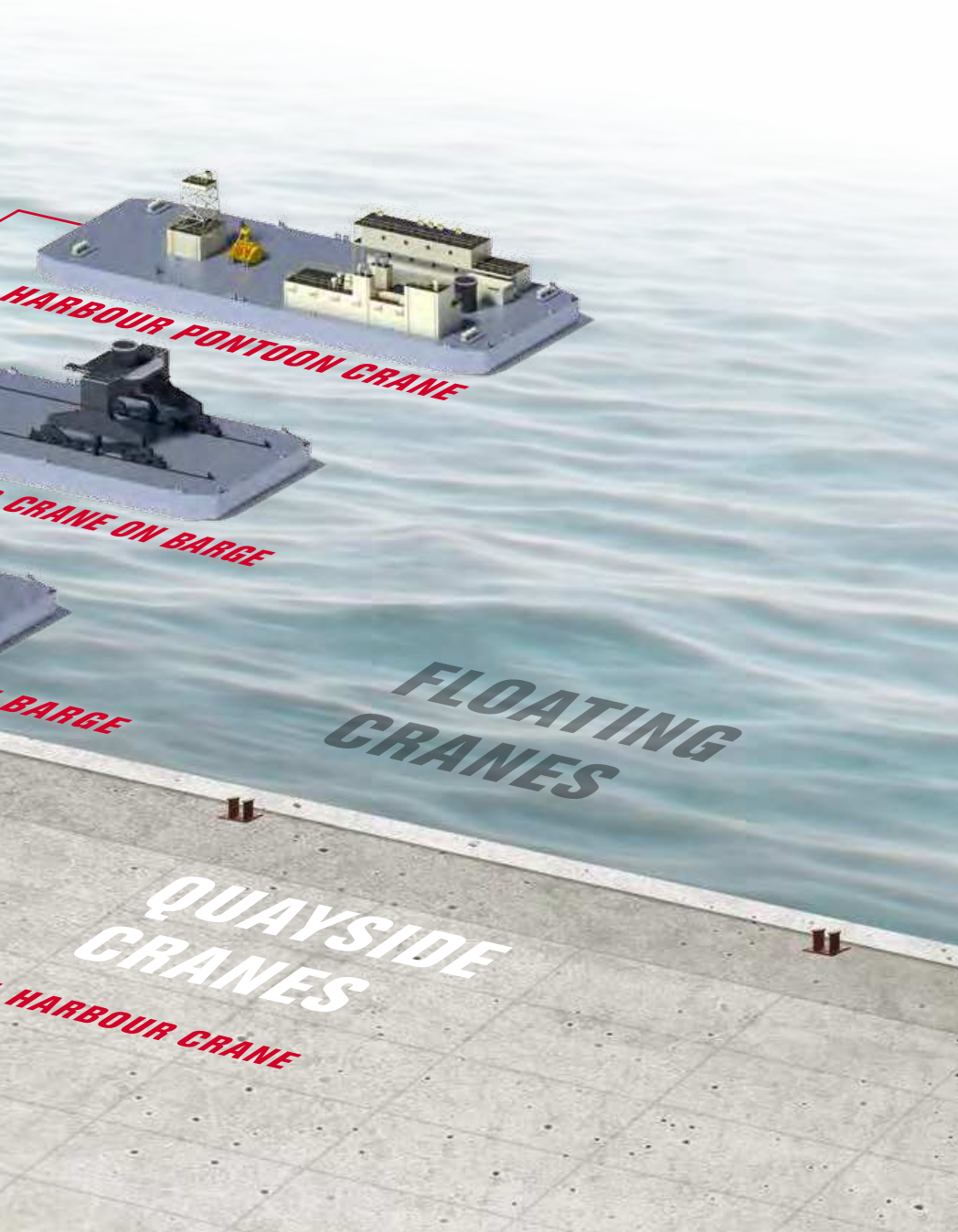
# SITE

## FOR FAST, EFFICIENT CARGO HANDLING

Available in different crane types and variants, the Model 8 crane is a universally applicable machine which can quickly and efficiently handle cargo with a broad range of lifting gear.

Crane types	Variants	Max. lifting capacities [t]				Max. hoisting speeds [m/min]				Max. radius [m]		
		100	150	200	100* 63**	90	100	120	140	50	56	58
G HMK (G HSK) (G HPK)	8710			✓			✓			✓		
	8610		✓			✓				✓		
	8410 standard variant	✓				✓						✓
	8410 high-speed variant	✓					✓					✓
	8410 B				✓				✓	✓		

\* Heavy-load operation (top), four-rope grab operation (bottom)  
 \*\* A7 classification, 50-tonne grab curve in A8 classification

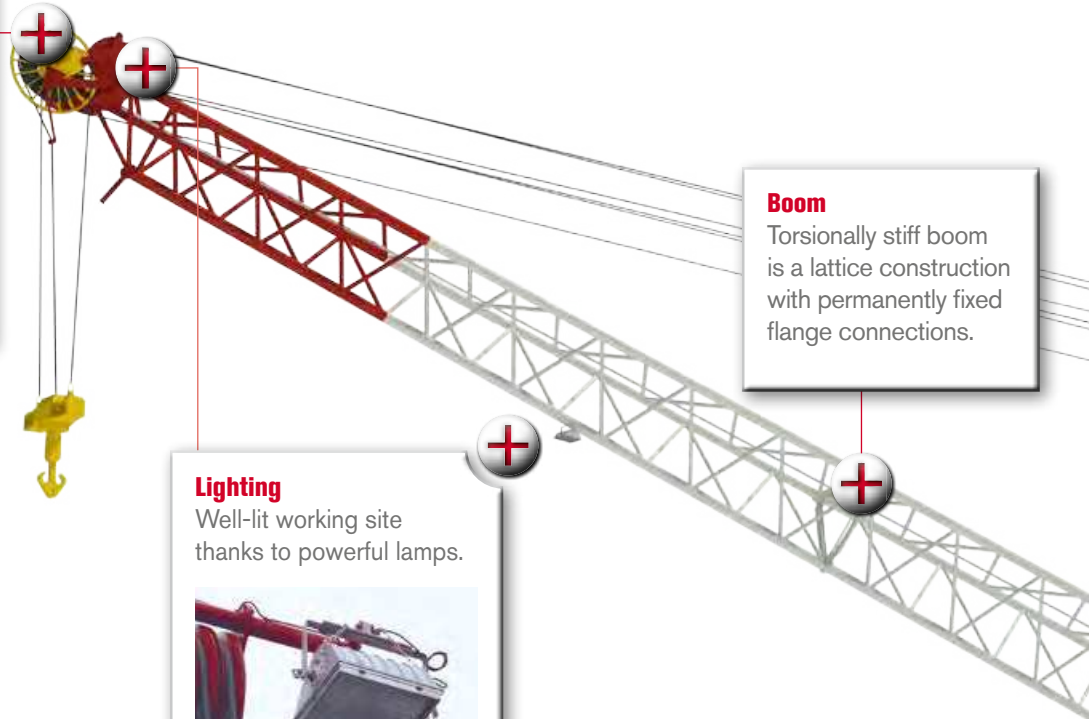


# ALL-ROUND EXCELLENT DESIGN

## MODEL 8 HARBOUR CRANES AT A GLANCE

### Cable reel

Safe cable control and reduced cable loading due to torque-regulated cable reel.



### Boom

Torsionally stiff boom is a lattice construction with permanently fixed flange connections.

### Lighting

Well-lit working site thanks to powerful lamps.



### Propping system

Proven H-type stabilizers including:

- ▶ automated propping system,
- ▶ stabilizer pads chosen for the particular conditions of the quay,
- ▶ optional interlocking stabilizer beams for reduced passage width.



### Superstructure

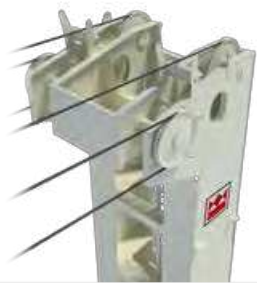
Spacious and service-friendly two floor construction:

- ▶ 2.5 m clear headroom,
- ▶ separate, large rooms for main components,
- ▶ spacious stairways.



### Tower head

Ladders for safe ascent to the tower head. Extended platform for easy access to rope pulleys for maintenance work.



### Tower cab

Ergonomically designed cab affords enhanced comfort.

High crane uptime through enhanced diagnostic via the Visumatic® crane management system.

Excellent view of the work site due to tower cab located high up on the tower. Even better view thanks to the forward-mounted cab (optional).



### Rubber-tyred chassis

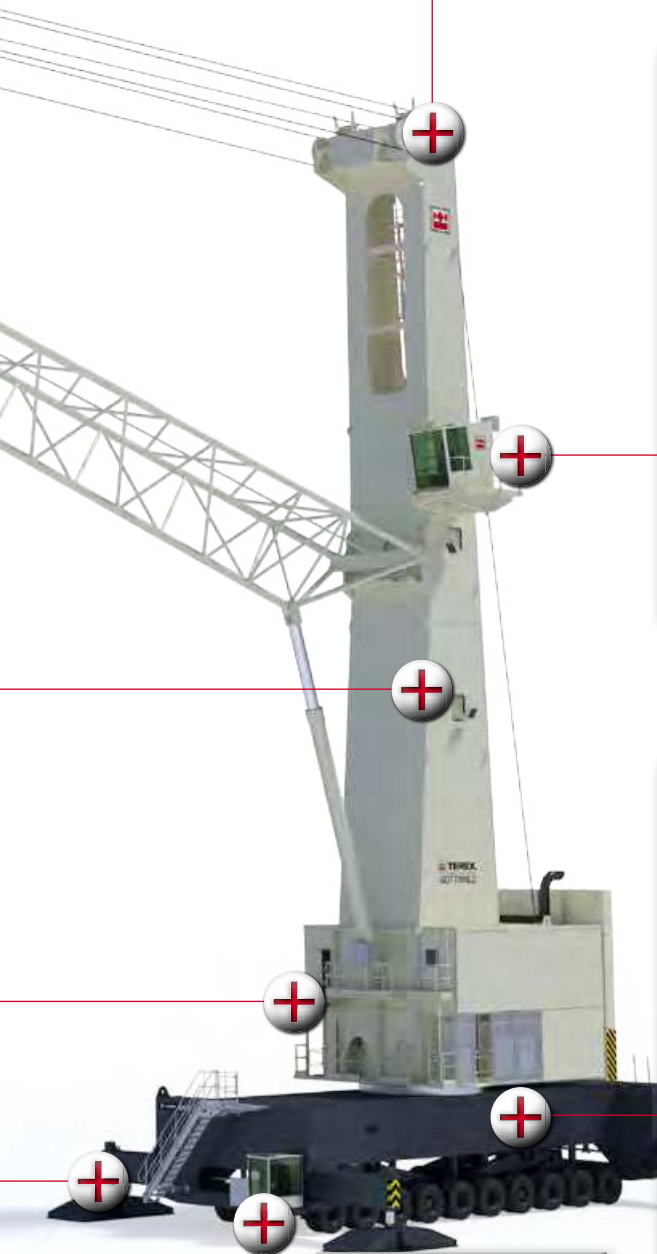
Maintenance-free equalizer beams with vertical compensation of up to +/- 250 mm means the axle load is always evenly distributed.

Tight turning circle and crab steering provide excellent maneuverability.



### Driver cab

Driver cab as standard on the chassis.



# SUPERSTRUCTURE – TOP FLOOR

SPACIOUSLY ARRANGED AND EASILY ACCESSIBLE

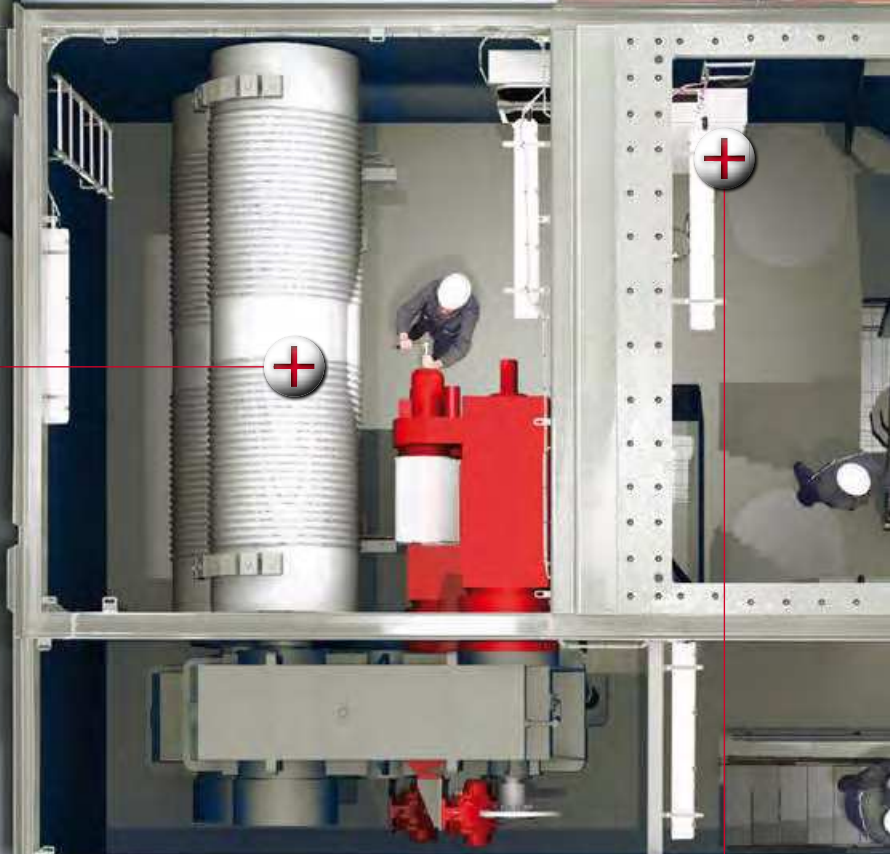
## Electrics room

- ▶ Weatherproof and air-conditioned
- ▶ Contains electrical equipment and control system
- ▶ Clearly divided into function groups
- ▶ Features diagnostics panel to facilitate troubleshooting



## Hoists

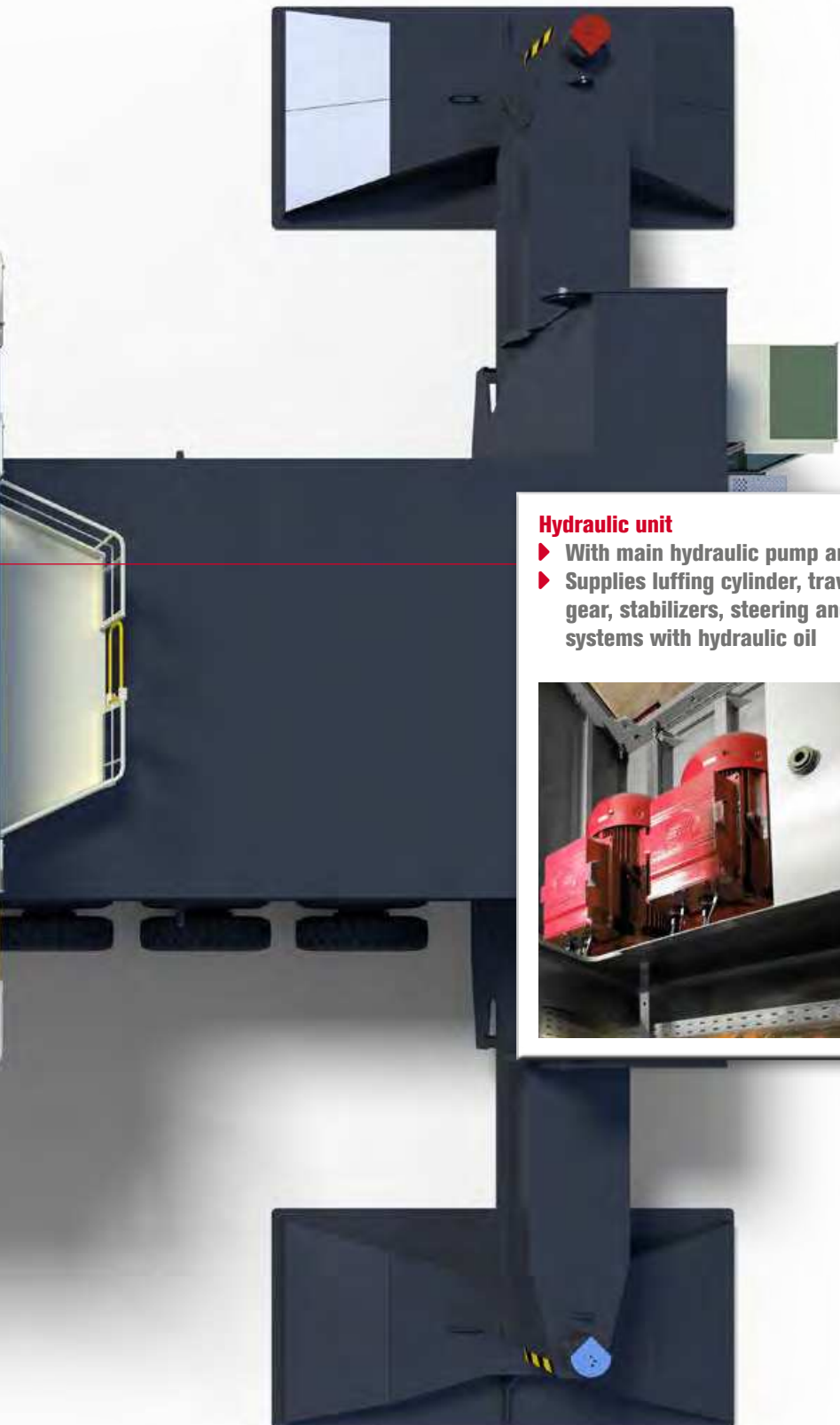
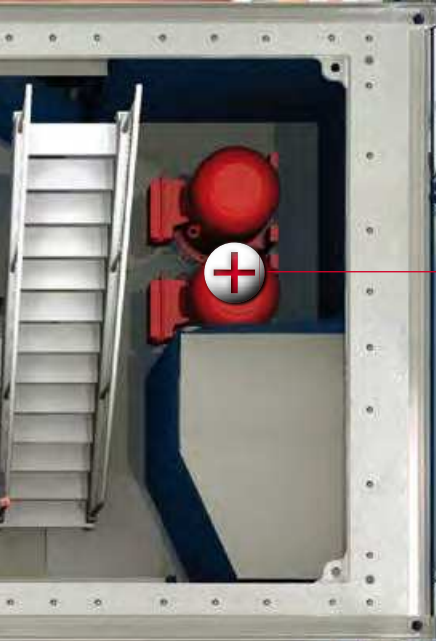
- ▶ Easily accessible
- ▶ Helical gear in a U-shape arrangement
- ▶ DC drive, smooth acceleration and deceleration of the hoisting motion
- ▶ Second hoist for heavy lifting and four-rope grab machines



## Central lubrication system

- ▶ Provides regular and proper lubrication of slew ring, boom root and luffing cylinder bearings
- ▶ Optionally extendable to include chassis and rope pulleys
- ▶ Pinion lubrication using special-purpose, high-performance grease via separate central lubrication system





### Hydraulic unit

- ▶ With main hydraulic pump and tank
- ▶ Supplies luffing cylinder, travel gear, stabilizers, steering and brake systems with hydraulic oil



# SUPERSTRUCTURE – LOWER FLO

**SERVICE-FRIENDLY AND COMPACT**

## Slewing gear units

- ▶ Slewing gear units designed as modular assemblies
- ▶ The number of units is as required for the crane variant and application
- ▶ Proven planetary gear
- ▶ DC drive for smooth acceleration and deceleration of the slewing motion

## Diesel generator

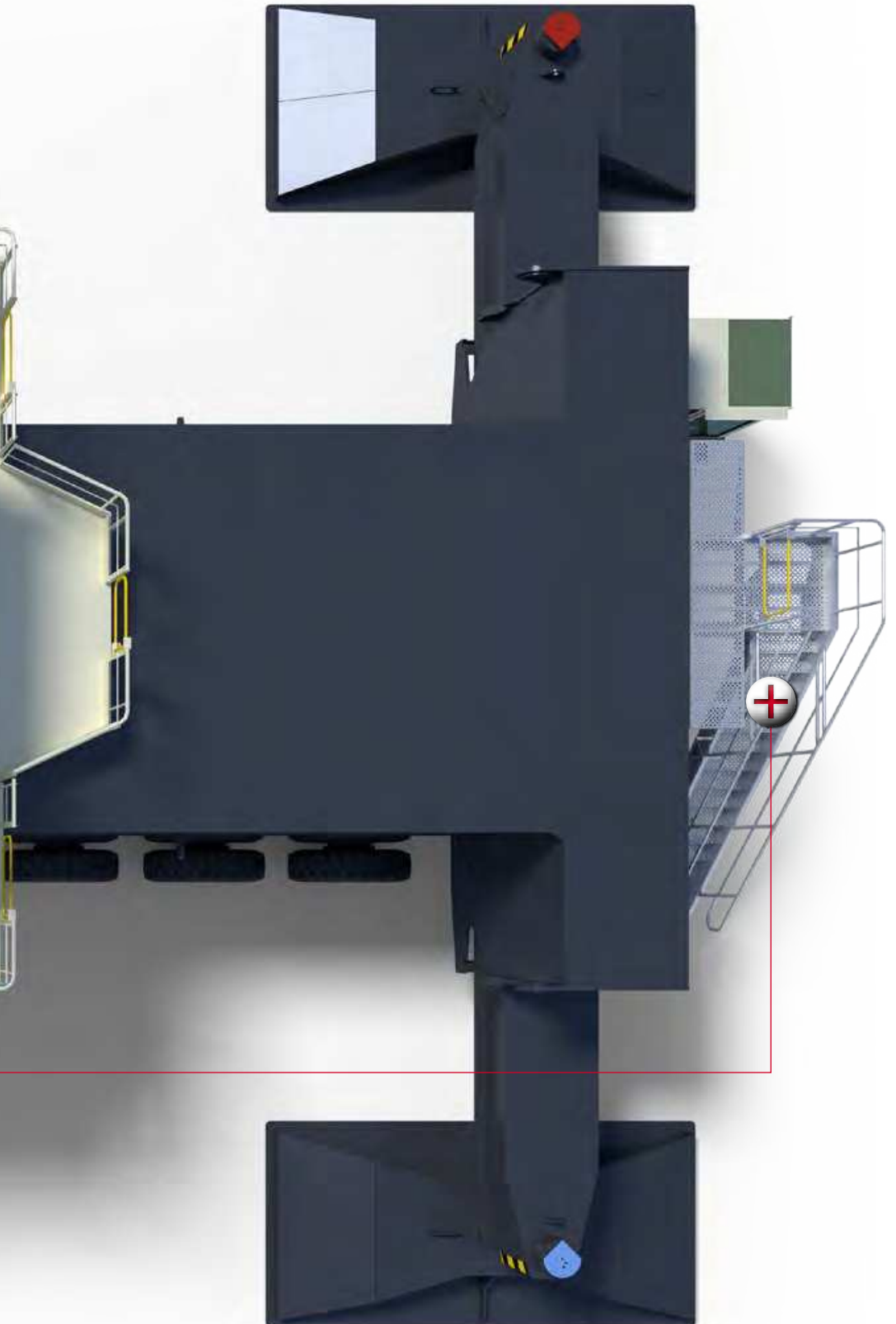
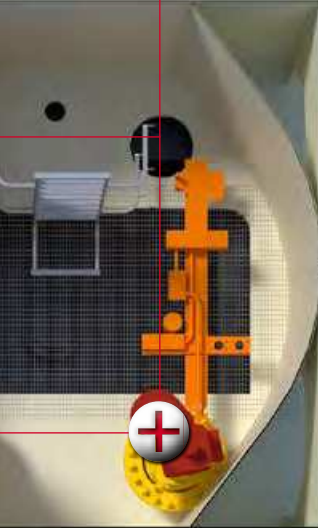
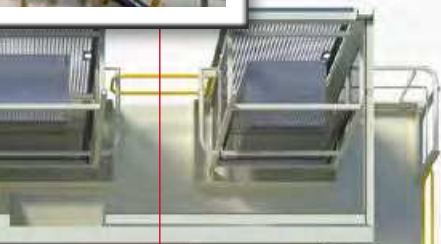
- ▶ Mounted on slide for easy replacement
- ▶ Features drive power based on crane variants and application
- ▶ Provides sufficient power for all crane functions to be performed simultaneously and independently of each other



## Stairways

- ▶ Provide easy access to the tower cab
- ▶ Feature an ergonomic design – with 50° inclination

# OR



# EFFICIENT, ECO-FRIENDLY AND DURABLE

## ELECTRIC DRIVES

The Model 8 harbour crane is powered by electricity. The crane draws its power from:

- ▶ **the on-board diesel-powered generator,**
- ▶ **or from the quayside mains supplying low or medium-voltage electricity.**

### Generating electricity on-board

The diesel-powered generator features low fuel consumption thanks to its outstanding efficiency. Use of state-of-the-art dynamic brake resistors – standard on Terex® Gottwald cranes – can provide savings in primary energy of up to 15% depending on operating conditions and crane capacity.

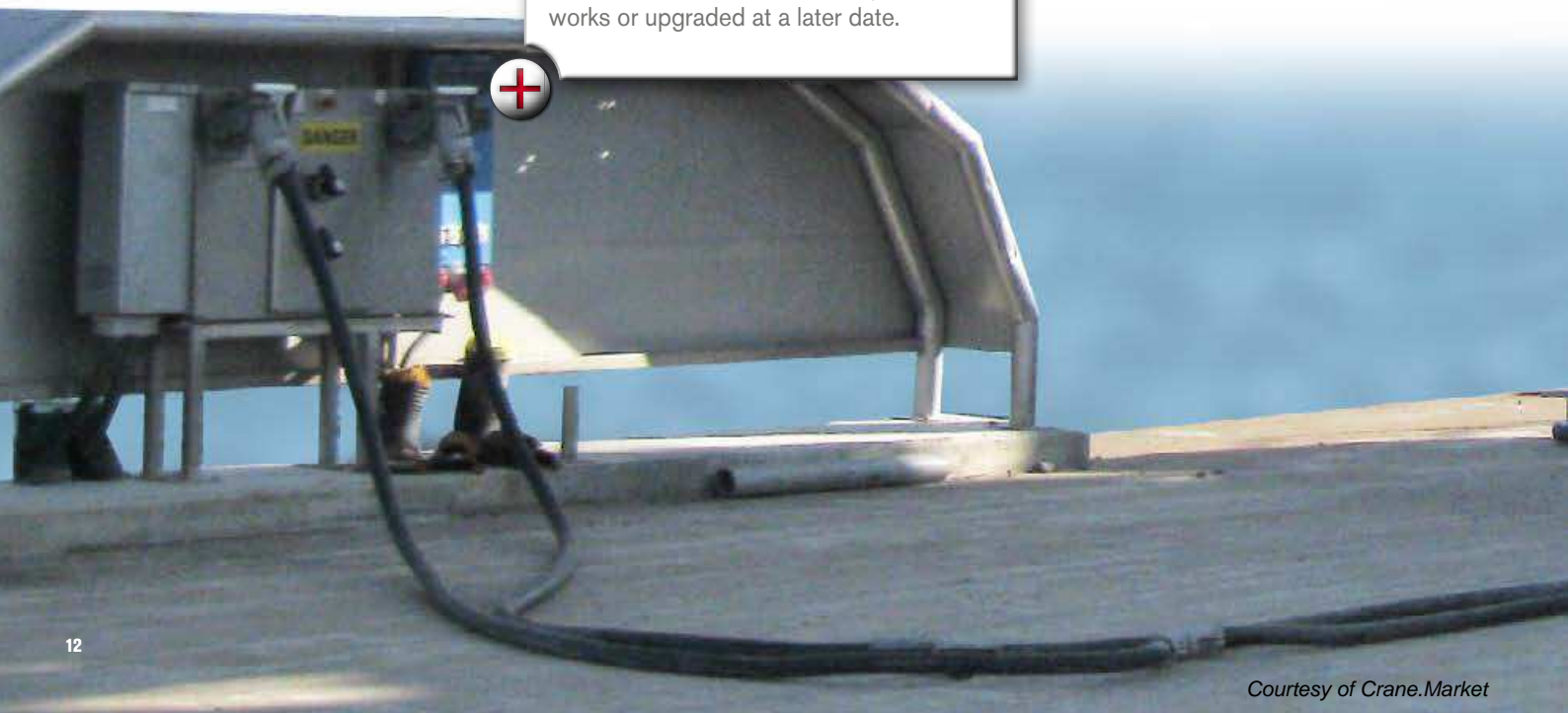
### External power supply

If used with electricity from the harbour mains, your Terex® Gottwald crane offers:

- ▶ **enhanced efficiency throughout the drive train,**
- ▶ **the opportunity to return electricity to the mains,**
- ▶ **savings in overheads,**
- ▶ **zero exhaust emissions in the terminal,**
- ▶ **reduced noise emissions,**
- ▶ **reduced servicing costs.**

### External power supply

Our cranes can make use of low or medium-voltage mains supplies. They may be equipped with the necessary units ex works or upgraded at a later date.





## HYBRID DRIVE

When generating power on-board, the crane is more efficient with the Terex® Gottwald hybrid drive – a combination of the diesel-powered generator and electrostatic short-term storage media. The energy recovered from lowering and braking motions is stored in ultracaps, and is then available to the crane's electric circuits for the next work cycle. The result is a potential reduction in fuel consumption of up to 23% depending on operating conditions and crane capacity.



**Everything under control**

Intuitive operation through user-friendly human-machine interface.



# SMART, USER-FRIENDLY, SAFE

## TEREX® GOTTWALD HARBOUR CRANES

The Model 8 harbour crane is packed with smart technology. TPS always focuses on safety and productivity for both the machine and the crane driver.

### As standard: ergonomic, top-of-the-range equipment

The Model 8 harbour crane includes user-friendly functions as standard. These features include:

- ▶ comfortable, air-conditioned tower cab, with optional air-suspension seat for safe, comfortable work,
- ▶ Visumatic® crane management system with clearly arranged graphic symbols for intuitive operator guidance,
- ▶ camera on the boom tip for a close-up view of the work site via the monitor screen in the cab,
- ▶ ergonomically designed stairways with an inclination of 50° for comfortable, easy access to tower cab, machinery rooms and service points.

## MORE CONTROL – MORE EFFICIENCY



Many optional features enable customers to adapt their Terex® Gottwald Model 8 crane to the exact conditions of use, these features include:

- ▶ radio remote control – to avoid repeated ascent to the tower cab during complex crane maneuvers,
- ▶ automatic point-to-point handling mode to provide efficient support for repetitive load moves,
- ▶ Vertical Lift Assistant to stop the load swinging after being raised and prevent horizontal loads on the boom,
- ▶ Tandem Lift Assistant permits use of full lifting capacities and control of two cranes by only one operator,
- ▶ Grab Fill Level Control to reduce overload cut-outs and to improve the bulk handling performance,
- ▶ Hold Totalization Feature for register and record bulk handling rates per hold and in total,
- ▶ web-based information and diagnostics system to record operating data and provide access to service data.

# PERFECTLY INTEGRATED HANDL

## HIGHLY EFFICIENT SOLUTIONS

TPS offers a comprehensive range of equipment for all points along the logistics chain – to provide integrated handling solutions from a single source.

As an experienced port solutions provider, we meet the needs of the entire logistics chain and its interfaces – whether in container, general cargo or bulk handling.

### The right choice – from the start

We also offer planning and advisory services on all aspects of terminal investments and expansion projects. To help you, we employ state-of-the-art software solutions including simulation and emulation specifically for container handling.

### Bulk handling

We offer comprehensive packages for the quayside infrastructure of bulk terminals, including:

- ▶ cranes,
- ▶ hoppers and
- ▶ conveyor belts.

TPS enhances bulk handling capability by offering:

- ▶ consultancy services and
- ▶ software designed specifically for bulk terminals, developed by our subsidiary DBIS.



Terex® Gottwald harbour cranes are suitable for a complete range of cargo handling applications and are adapted to specific quay infrastructures. Our ever-expanding product range also includes hoppers of various kinds and software developed by our subsidiary, DBIS, specifically for bulk terminals.



### Solutions for terminals with rail infrastructure

Model 8 as portal harbour crane with customized portals in regards to height, span and quay loading.



# ING



Terex® Gottwald Model 8 harbour cranes: Handling containers, general and project cargo as well as bulk materials with motor or four-rope grab.

## Solutions for limited or missing quay infrastructures

We have also made a name for ourselves as a manufacturer of sophisticated, complete floating crane solutions including the barge and the maritime classification.



# IN THE BEST OF HANDS

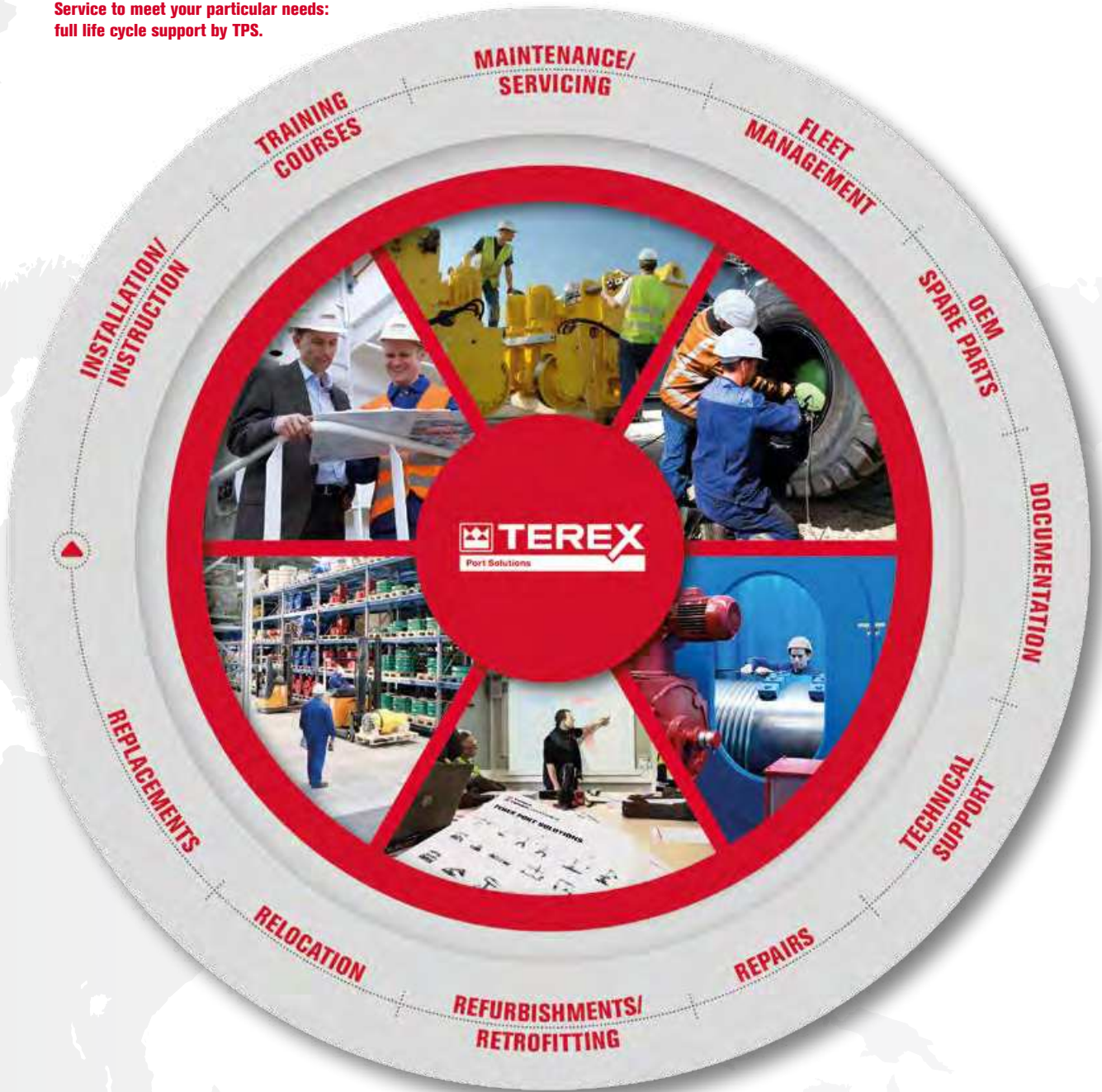
## FULL LIFE CYCLE SUPPORT

For all its port technology products, TPS offers reliable, worldwide, customer-oriented service. This means that your Terex® Gottwald machines have excellent availability while securing the value of your investments.

We have a dedicated, integrated, reliable service network that provides professional troubleshooting to support you efficiently. When you purchase a product bearing the Terex® or Terex® Gottwald brand, we provide a contact responsible in your region. This helps overcome language barriers and time zones and provides help quickly whenever needed.



Service to meet your particular needs:  
full life cycle support by TPS.



[www.terexportsolutions.com](http://www.terexportsolutions.com)

# TEREX PORT SOLUTIONS

## THE BROADEST RANGE OF CARGO HANDLING EQUIPMENT FOR PORTS AND TERMINALS

From ship-to-shore cranes and mobile harbour cranes to reach stackers through to integrated systems for fully automated container handling or professional bulk handling – TPS offers you the right solution from a single source.

With our broad portfolio of products, services and software, sound planning and advisory expertise and a global network, we are your expert for efficient, safe and environmentally aware cargo handling in ports and terminals.



[www.terexportsolutions.com](http://www.terexportsolutions.com)

Effective date: March, 2015. Product specifications and prices are subject to change without notice or obligation. The photographs and/or drawings in this document are for illustrative purposes only. Refer to the appropriate Operator's Manual for instructions on the proper use of this equipment. Failure to follow the appropriate Operator's Manual when using our equipment or otherwise failure to act responsibly may result in serious injury or death. The only warranty applicable to our equipment is the standard written warranty applicable to the particular product and sale and Terex Port Solutions makes no other warranty, express or implied. Terex, the Terex Crown design, Terex Gottwald, DBIS, Visumatic and Works For You are trademarks of Terex Corporation or its subsidiaries. All other trademarks are property of their respective owners. © 2015 Terex Corporation.

Terex MHPS GmbH  
Terex Port Solutions  
PO Box 18 03 43, 40570 Düsseldorf, Germany  
Phone: +49 (0) 211 7102-0  
Fax: +49 (0) 211 7102-3651  
[tps.info@terex.com](mailto:tps.info@terex.com)



**WORKS FOR YOU.**