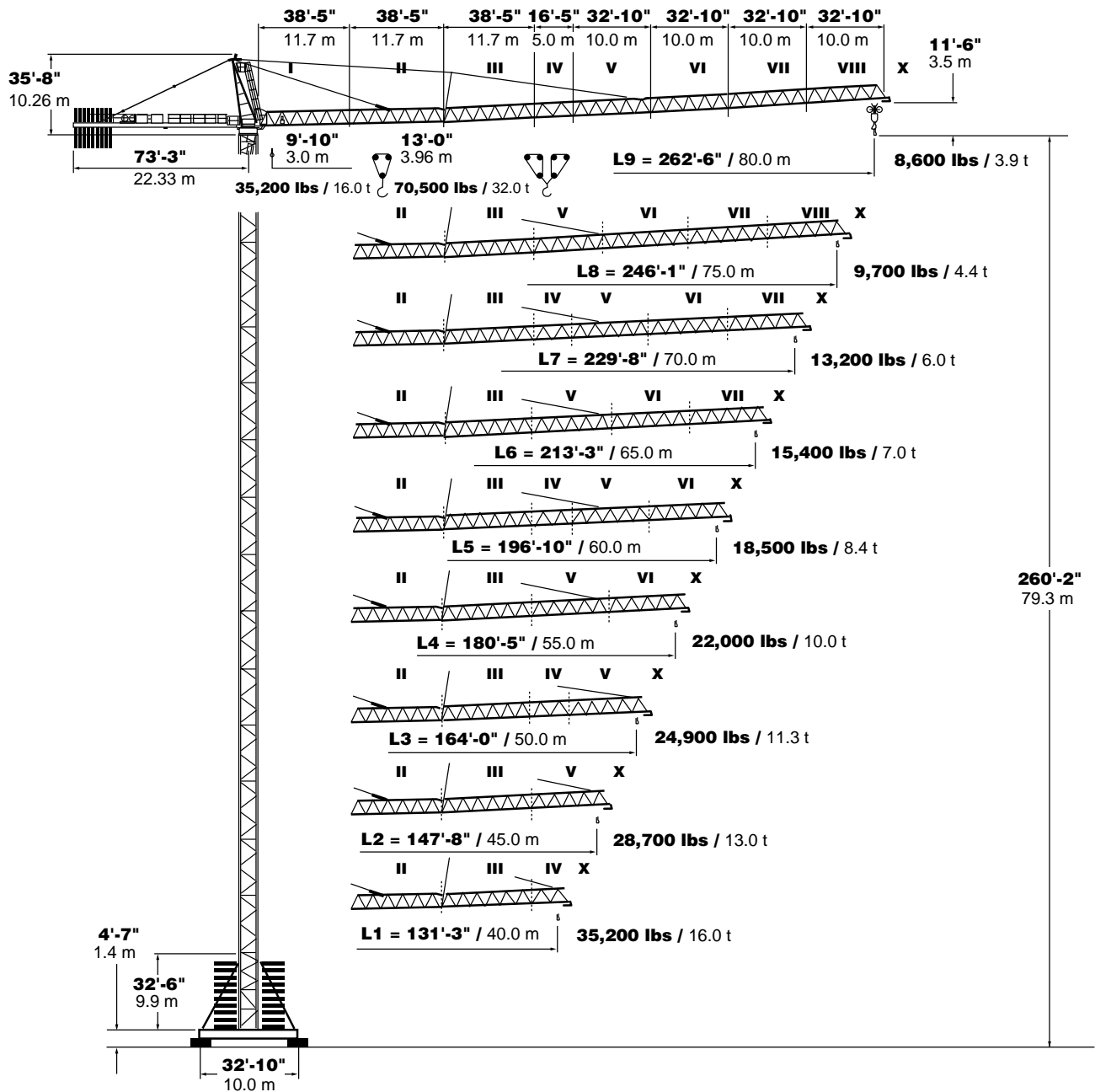




PEINER SK 575

Hammerhead Tower Crane
35,200-70,500 lbs. (16-32 t)
Lifting Capacity

SPECIFICATIONS



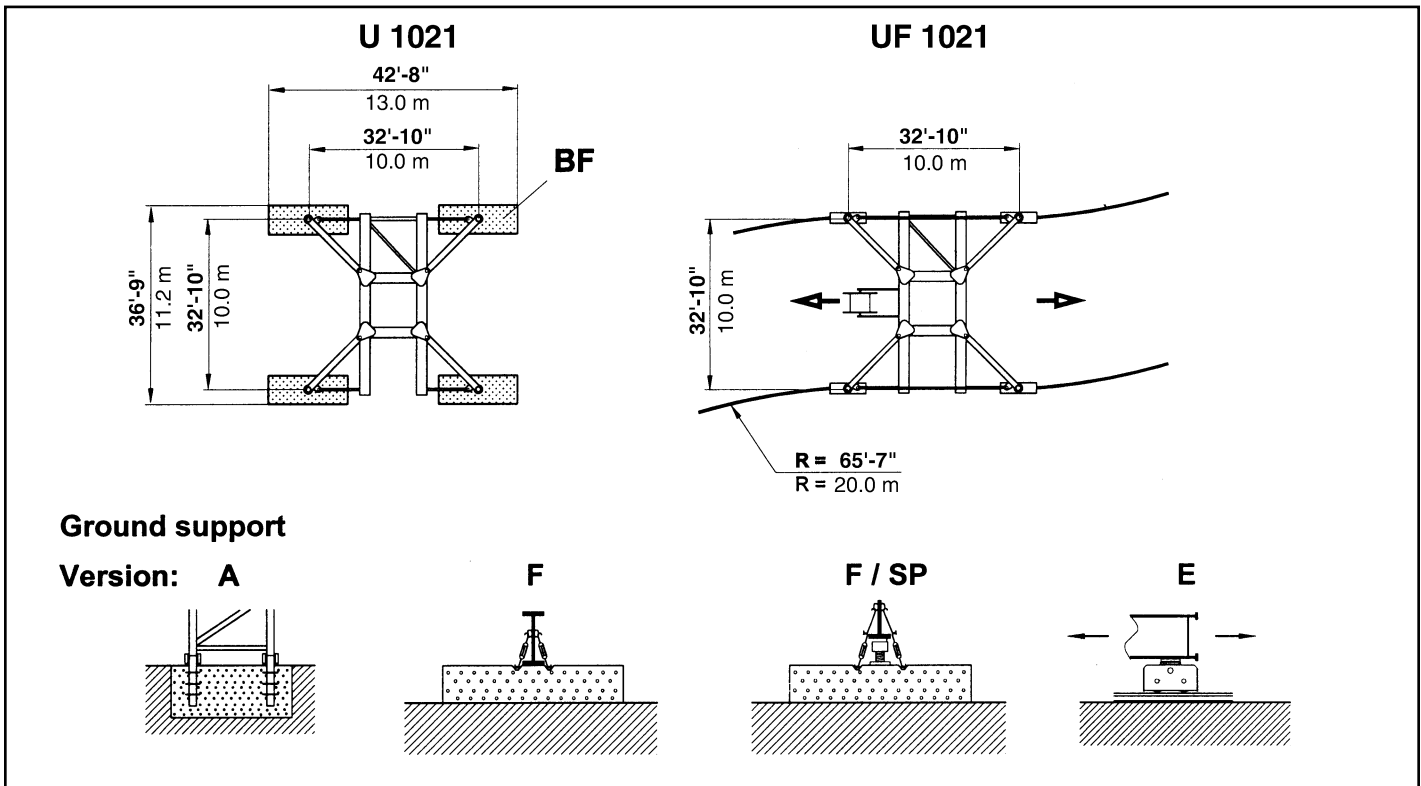
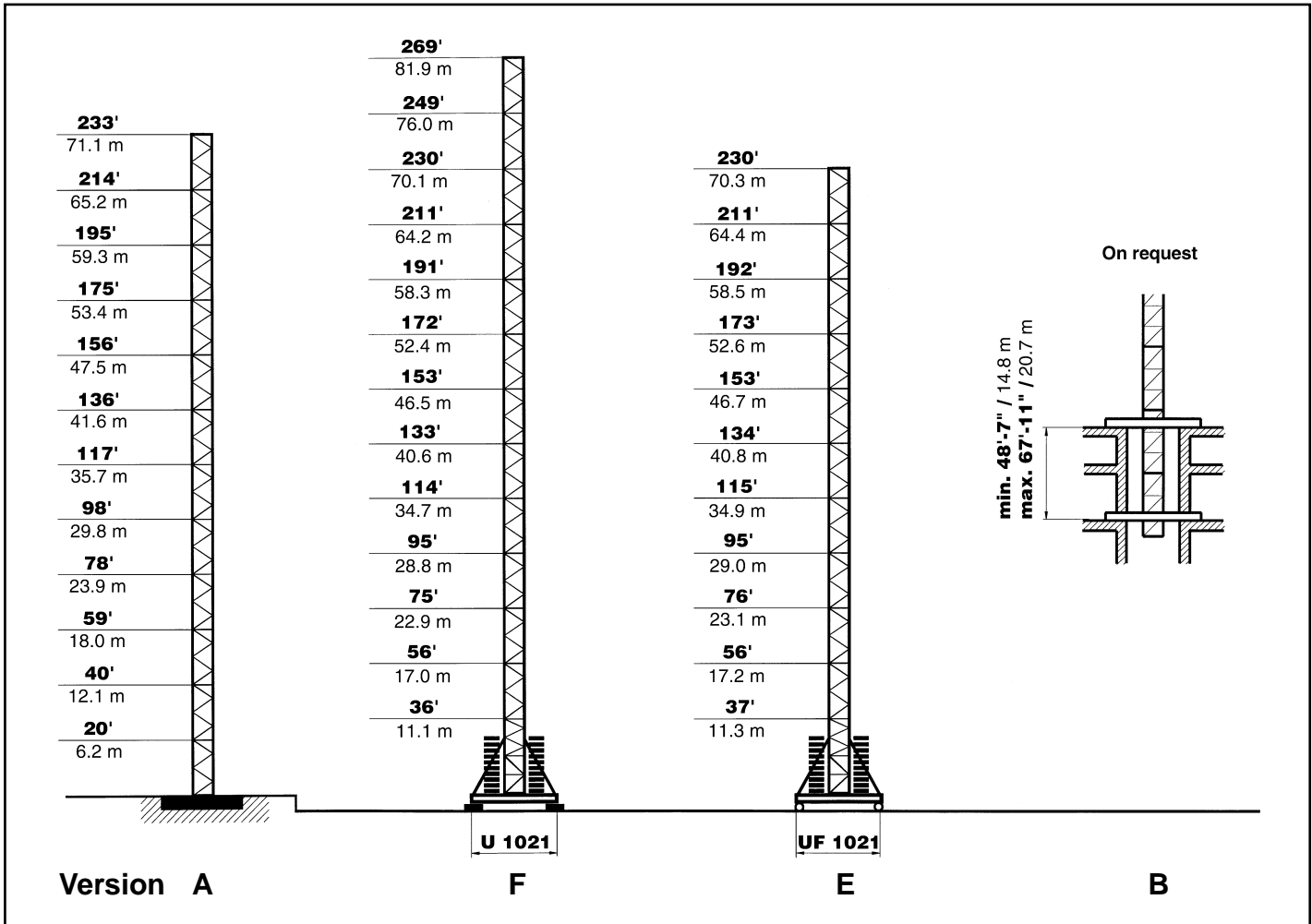
simple, available and
cost effective™

Machines shown may have optional equipment.





Courtesy of Crane.Market

PEINER SK 575

Combinations of tower section, tower heights, base ballast

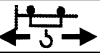





PEINER SK 575 Radius and Capacity

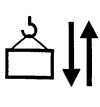


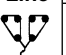

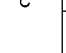


Jib	Max Capacity from		Radius																		
			ft/m	4-Part line max. 70,500 lbs. max 32.0 t							 / 			2-Part line max. 35,200 lbs. max. 16.0 t			Radius – 3'-4"/1.0 m Capacity – 3086 kips/1.41 t				
	9'-10" to 3.0 m to	13'-0" to 3.96 m to	45'-11" 14.0	52'-6" 16.0	59'-1" 18.0	65'-7" 20.0	76'-9" 24.0	91'-10" 28.0	98'-5" 30.0	114'-10" 35.0	131'-3" 40.0	147'-8" 45.0	164'-0" 50.0	180'-5" 55.0	196'-10" 60.0	213'-3" 65.0	229'-8" 70.0	246'-1" 76.0	262'-6" 80.0		
L9	262'-6" 80.0	86'-1" 26.25 m	45'-3" 13.79 m	69224	58862	50882	44533	35494	32760	30247	25243	21495	18607	16314	14440	12875	11552	10428	9458	8598	
L8	246'-1" 75.0	87'-8" 26.72 m	46'-7" 14.20 m	70547	61067	52822	46296	36817	33422	30864	25772	21980	19026	16689	14771	13183	11839	10692	9700		
L7	229'-10" 70.0	102'-4" 31.18 m	53'-0" 16.15 m	70547	70547	61883	54453	43851	35979	35273	30886	26423	22994	20260	18011	16138	14572	13228			
L6	213'-3" 65.0	106'-11" 32.58 m	56'-3" 17.15 m	70547	70547	66578	58542	46958	38911	35714	32498	27844	24250	21362	19026	17086	15432				
L5	196'-10" 60.0	114'-1/2" 34.76 m	60'-1" 18.31 m	70547	70547	70547	63492	50928	42306	38867	34987	30026	26168	23104	20591	18519					
L4	180'-5" 55.0	120'-7" 36.75 m	63'-0" 19.20 m	70547	70547	70547	67240	54012	44907	41292	35273	32011	27954	24691	22046						
L3	164'-1" 50.0	121'-5 1/2" 37.02 m	64'-0" 19.01 m	70547	70547	70547	68563	55115	45833	42152	35273	32297	28175	24912							
L2	147'-8" 15.0	123'-3" 37.56 m	65'-7" 20.00 m	70547	70547	70547	70547	56878	47266	43496	35935	32826	28660								
L1	131'-3" 40.0	124'-0" 37.80 m	86'-10" 20.37 m	70547	70547	70547	70547	57981	48347	44489	36816	35273									

PEINER SK 575 Speeds and Counterweight

Speeds

FU 9-320/4		v = 0 → ~260 fpm (80 m / min.)	1 x 12.2 HP 1 x 9.0 kW
SR 10-190/4		v = 0 → ~120 fpm (36 m / min.)	4 x 12.2 HP 4 x 9.0 kW
K WB 120/4		v = 0 → 0.9 min ⁻¹ (rpm)	L1 - L4
			L5 - L9
		2 x 11.4 HP 2 x 8.4 kW	3 x 11.4 HP 3 x 8.4 kW

 HK max. = 720' / 220 m **5-Layers**

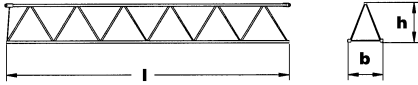
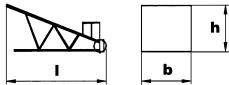

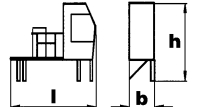
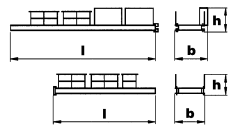
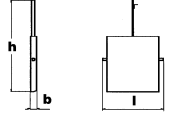
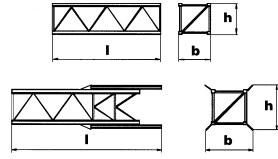
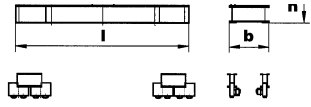
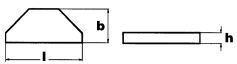

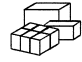
Type SR WB 102-160/4F ~160 HP (120.0 kW)			2-Part Line	→ 490 fpm 150 m/min	7700 lbs 3500 kg	4-Part Line	→ 245 fpm 75 m/min	15,400 lbs 7000 kg	Total motor output without SR 10-190/4 ~ 200 HP ~ 150 kW
			→ 315 fpm 96 m/min	13,200 lbs 6000 kg		→ 158 fpm 48 m/min	26,400 lbs 12 000 kg		
			→ 195 fpm 60 m/min	22,000 lbs 10 000 kg		→ 98 fpm 30 m/min	44,000 lbs 20 000 kg		
			→ 125 fpm 38 m/min	35,300 lbs 16 000 kg		→ 63 fpm 19 m/min	70,600 lbs 32 000 kg		
									Connected power 170 kVA

Counterweight

Jib	L1	L2	L3	L4	L5	L6	L7	L8	L9
Counterweight BG	50,800 lbs 23 150 kg	54,400 lbs 24 800 kg	57,600 lbs 26 250 kg	61,200 lbs 27 900 kg	68,000 lbs 31 000 kg	64,400 lbs 29 350 kg	68,000 lbs 31 000 kg	64,400 lbs 29 350 kg	68,000 lbs 31 000 kg
	1 x 3200 lbs 1 x 1450 kg		1 x 3200 lbs 1 x 1450 kg			1 x 3200 lbs 1 x 1450 kg		1 x 3200 lbs 1 x 1450 kg	
	7 x 6800 lbs 7 x 3100 kg	8 x 6800 lbs 8 x 3100 kg	8 x 6800 lbs 8 x 3100 kg	9 x 6800 lbs 9 x 3100 kg	10 x 6800 lbs 10 x 3100 kg	9 x 6800 lbs 9 x 3100 kg	10 x 6800 lbs 10 x 3100 kg	9 x 6800 lbs 9 x 3100 kg	10 x 6800 10 x 3100 kg

PEINER SK 575 Dimensions and transport weights

See operating manual for mounting weights

	Designation		Dimensions (ft / m)			Weight lbs / t
			l	b	h	
1	Jib		39'-0" 11.89	6'-6" 1.97	6'-11" 2.12	7490 3.40
	Section II		40'-6" 12.34	6'-6" 1.97	7'-3" 2.21	8860 4.02
	Section III		38'-10" 11.84	6'-6" 1.97	7'-7" 2.30	5420 2.46
	Section IV		18'-8" 5.69	6'-6" 1.97	6'-10" 2.09	5360 2.43
	Section V		35'-0" 10.68	6'-6" 1.97	6'-11" 2.11	5200 2.36
	Section VI		35'-5" 10.79	6'-6" 1.97	6'-4" 1.93	4280 1.94
	Section VII		33'-6" 10.20	6'-6" 1.97	6'-3" 1.90	2760 1.25
	Section VIII		33'-5" 10.19	6'-6" 1.97	6'-2" 1.88	1700 0.77
	Jib Tip		6'-8" 2.02	4'-6" 1.37	2'-11" .88	660 0.30
	2		Tower Top cpl.		27'-1" 8.26	6'-5" 1.96
3	Turntable cpl.		11'-9" 3.58	7'-1" 2.17	7'-5" 2.27	24,100 10.93
4	Cab		5'-5" 1.65	3'-7" 1.10	7'-2" 2.18	1040 0.47
	Support, railing, electrical panel		11'-8" 3.55	6'-7" 2.00	6'-5" 1.95	2050 0.93
5	Counterjib		G 2 38'-10" 11.85	7'-5" 2.25	5'-11" 1.80	7500 3.40
			G 1 31'-1" 9.48	6'-8" 2.03	5'-8" 1.72	6030 2.74
6	Counterjib ballast		BG 5'-11" 1.81	0'-8" 0.19	10'-4" 3.14	3200 1.45
			5'-11" 1.81	0'-8" 0.19	15'-4" 4.68	6800 3.10
7	Tower section		TS 213.1 19'-6" 5.95	7'-10" 2.39	7'-10" 2.38	9790 4.44
			TSV 213 39'-4" 12.00	10'-4" 3.15	10'-4" 3.15	31,090 14.10
8	Rail mounted undercarriage with electrical panel		44'-0" 13.40	9'-6" 2.90	3'-9" 1.15	38,440 17.10
9	Central ballast block		13'-5" 4.50	6'-1" 2.05	1'-2" 0.40	14,550 6.60
10	Foundation block		9'-0" 3.00	3'-7" 1.20	2'-6" 0.75	14,550 6.60
11	Accessories					

For more information, product demonstration, or details on lease and rental plans, please contact your local Terex Towers Distributor.

We reserve the right to amend these specifications at any time without notice. The only warranty applicable is our standard written warranty applicable to the particular product and sale. We make no other warranty, expressed or implied.

TEREX TOWERS

202 Raleigh Street
Wilmington, NC 28412 USA
(910) 395-8500 • FAX: (910) 395-8547
E-mail: wilmington@terexlifting.com

www.terexlift.com