



**TEREX®**

# **Master Part Manual**

## **Compact Track Loader**

**PT-30**

Part Number: 2010-680  
Printed (8-12)

*(Revision 3-11-2013)*

# Table of Contents

<p><b>1. Cab (R.O.P.S.) Assembly</b> Serial # DTA 05001-Current* . . . . . <b>1-A</b></p> <p><b>2. Light Bar Assembly</b> Serial # DTA 05001-Current* . . . . . <b>2-A</b></p> <p><b>3. Enclosed Cab (R.O.P.S.) Assembly</b> (Optional) Serial # DTA 05001-Current* . . . . <b>3-A</b></p> <p><b>4. Chassis Assembly</b> Serial # DTA 05001-Current* . . . . . <b>4-A</b></p> <p><b>5. Hood Assembly</b> Serial # DTA 05001-Current* . . . . . <b>5-A</b></p> <p><b>6. Radiator/Oil Cooler Assembly</b> Serial # DTA 05001-Current* . . . . . <b>6-A</b></p> <p><b>7. Hydraulic Reservoir Assembly</b> Serial # DTA 05001-Current* . . . . . <b>7-A</b></p> <p><b>8. Hydraulic Control Assembly</b> Serial # DTA 05001-05572 . . . . . <b>8-A</b> Serial # DTA 05573-Current* . . . . . <b>8-B</b></p> <p><b>9. Drive/Auxiliary Pump Assembly</b> Serial # DTA 05001-05572 . . . . . <b>9-A</b> Serial # DTA 05573-Current* . . . . . <b>9-B</b></p> <p><b>10. Engine Assembly</b> Serial # DTA 05001-Current* . . . . . <b>10-A</b></p> <p><b>11. Fuse Panel Assembly</b> Serial # DTA 05001-Current* . . . . . <b>11-A</b></p> <p><b>12. Torsion Axle Assembly</b> Serial # DTA 05001-05572* . . . . . <b>12-A</b> Serial # DTA 05573-Current* . . . . . <b>12-B</b></p> <p><b>13. Undercarriage Assembly (RT)</b> Serial # DTA 05001-05572 . . . . . <b>13-A</b> Serial # DTA 05573-Current* . . . . . <b>13-B</b></p> <p><b>14. Undercarriage Assembly (LT)</b> Serial # DTA 05001-05572 . . . . . <b>14-A</b> Serial # DTA 05573-Current* . . . . . <b>14-B</b></p> <p><b>15. Lift Arm Assembly</b> Serial # DTA 05001-Current* . . . . . <b>15-A</b></p>	<p><b>16. Lift Arm Tubes and Fittings</b> Serial # DTA 05001-Current* . . . . . <b>16-A</b></p> <p><b>17. Quick Attach Assembly</b> Serial # DTA 05001-Current* . . . . . <b>17-A</b></p> <p><b>18. Quick Attach Adapter Assembly</b> (Accessory) Serial # DTA 05001-Current* . . <b>18-A</b></p> <p><b>19. Cab Heater Assembly</b> (Optional) Serial # DTA 05001-Current* . . . . <b>19-A</b></p> <p><b>20. Safety Decals U.S. (ANSI)</b> Serial # DTA 05001-Current* . . . . . <b>20-A</b></p> <p><b>21. Safety Decals ROW (ISO)</b> Serial # DTA 05001-Current* . . . . . <b>21-A</b></p> <p><b>22. Machine Graphics</b> Serial # DTA 05001-Current* . . . . . <b>22-A</b></p> <p>* Current refers to the machines being produced at the time this manual was printed. See manual cover for print date.</p>
--	--

## GENERAL SERVICE ITEMS & LUBRICANTS

<u>ITEM</u>	<u>MANUFACTURER/DESCRIPTION</u>	<u>PART NUMBER</u>
Engine Oil Filter	Perkins (140517050)	0200-377
Primary Air Filter	Donaldson (P821575)	0304-434
Secondary Air Filter	Donaldson (P822858)	0304-435
Engine Fuel Filter	Perkins (26560017)	0200-213
Fan Belt	Perkins	2010-117
Antifreeze/Coolant (1 gal.)	Ethylene Glycol (long life)	0300-766
Antifreeze/Coolant (Case/6 gal.)	Ethylene Glycol (long life)	0402-841
Engine Oil (1 qt.)	Multi-Grade 10W-30	0300-767
Engine Oil (Case/12 qt.)	Multi-Grade 10W-30	0402-838
Engine Oil (1 gal.)	Multi-Grade 10W-30	0402-839
Engine Oil (Case/6 gal.)	Multi-Grade 10W-30	0402-840
Grease (1 Tube)	Multi-Purpose Lithium	0300-769
Grease (Box/10 Tubes)	Multi-Purpose Lithium	0402-844
Grease (Case/40 Tubes)	Multi-Purpose Lithium	0402-834

## HYDRAULIC SERVICE ITEMS & LUBRICANTS

<u>ITEM</u>	<u>DESCRIPTION</u>	<u>PART NUMBER</u>
Hydraulic Oil Filter	Element,Filter,MP	0200-204
Kit,Seal,Loader Valve & Relief	Flts Loader Valve (P/N:0304-020)	2010-094
Kit,Seal,Bucket/Tilt Cylinder	Flts Cylinder (P/N:2010-274,2010-275)	2010-548
Rod,Bucket/Tilt Cylinder	Flts Cylinder (P/N:2010-274,2010-275)	2010-549
End Gland,Bucket/Tilt Cylinder	Flts Cylinder (P/N:2010-274,2010-275)	2010-550
Nut,Bucket/Tilt Cylinder	Flts Cylinder (P/N:2010-274,2010-275,2010-276)	2010-551
Kit,Seal,Lift Arm Cylinder	Flts Cylinder (P/N:2010-276)	2010-552
End Gland,Lift Arm Cylinder	Flts Cylinder (P/N:2010-276)	2010-553

<u>O-RING</u>	<u>PART NUMBER</u>
# 4, ORB Type	0314-366
# 6, ORB Type	0310-619
# 8, ORB Type	0307-353
# 10, ORB Type	0310-620
# 12, ORB Type	0310-621
# 16, ORB Type	0307-354
# 20, ORB Type	0310-832

**COMPONENT SERVICE ITEMS / HARNESSSES  
PT-30**

**HARNESSSES**

<u>ITEM</u>	<u>LOCATION</u>	<u>PART NUMBER</u>
HARNESS,WIPER,A W/LO		0304-572
HARNESS,WIPER,B		0304-573
HARNESS,HEATER W/LOO		0304-575
HARNESS,JUMPER,QA		2015-042
HARNESS GAUGE 4 UNIT		2030-276
<b>Serial #'s PT-30 05643-CURRENT</b>		
HARNESS MAIN PT30 PW		2010-687
HARNESS CAB PT30 PWR		2010-688
HARNESS AUX PWR ACT		2010-689
<b>Serial #'s PT-30 05001-05642</b>		
HARNESS MAIN PT30 PW		2010-511
HARNESS CAB PT30 PWR		2010-333
HARNESS AUX PWR ACT		2010-441

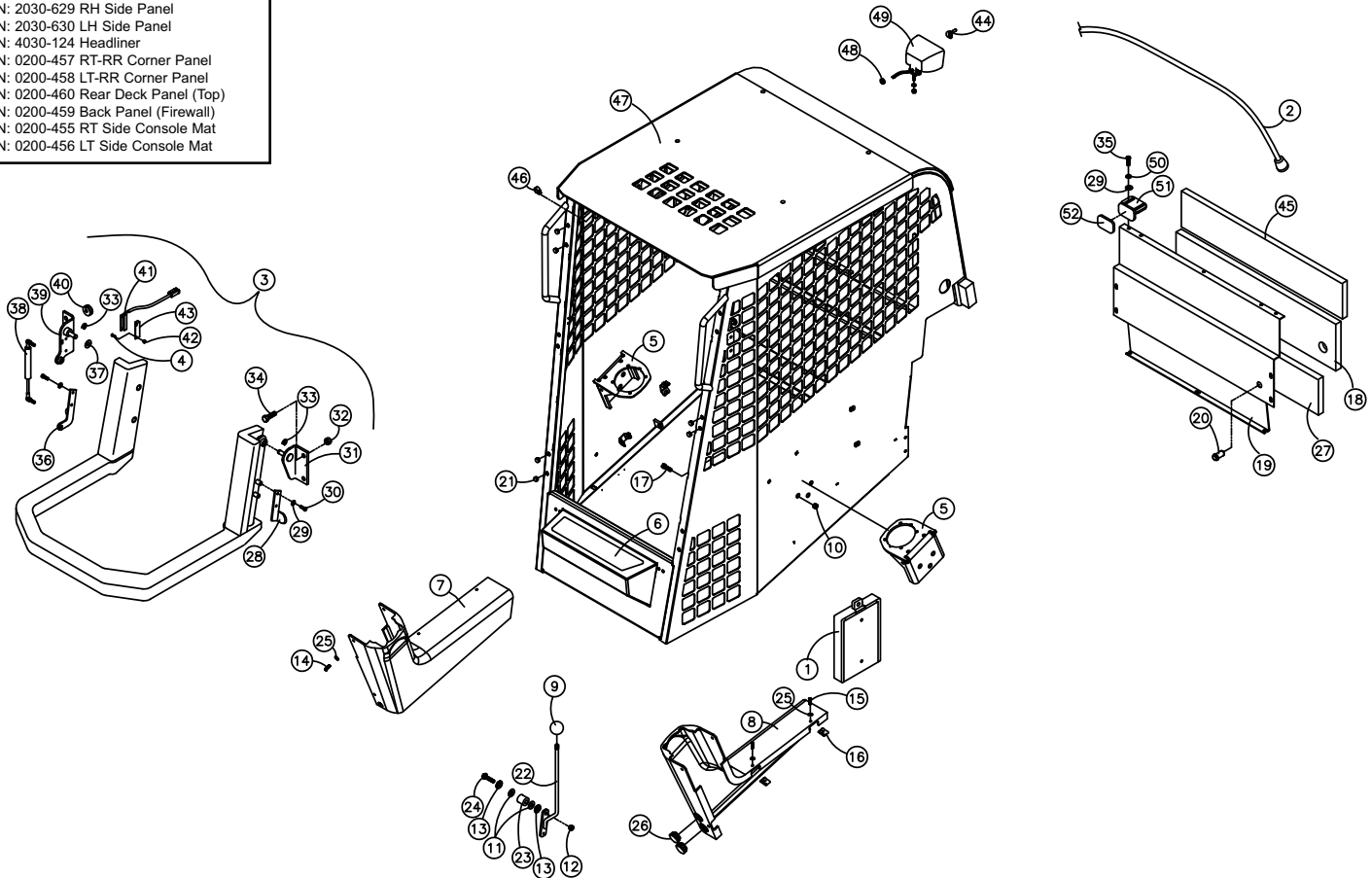
# CAB (R.O.P.S.) ASSEMBLY (SN: DTA 05001-Current)

Section 1

REF. NO.	PART NUMBER	QTY.	DESCRIPTION	REF. NO.	PART NUMBER	QTY.	DESCRIPTION
1	0304-318	1	BOX,OWNERS MANUAL	41	0304-473	1	SENSOR,SWITCH,LAPBAR
2	2010-688	1	HARNESS CAB PT30 PWR ACT	42	0310-308	4	NUT,HEX,NYLOCK 4-40,91831A005
3	0304-019	1	ASSY,LAP BAR	43	0412-036	1	BRACKET LAP BAR ACTIVATION SWITCH
4	0310-307	4	SCREW,MACHINE,4-40x.50 92314A110	44	0200-288	1	BULB,HALOGEN
5	0200-600	2	MNTS JOYSTICK	45	0200-290	1	INSULATION, TOP
6	0304-496	1	PAD,SKID	46	0090-172	5	TIE CABLE TREE MOUNT 50 LB
7	0200-588	1	CONSOLE RH	47	2030-511	1	WROPS PT30/50/60
8	0200-587	1	CONSOLE LH	48	0301-637	1	GROMMET (1840)
9	0302-546	1	KNOB,PLASTIC,1-7/8 DIA,1/2-13	49	0304-247	1	LIGHT,REAR
10	0314-269	6	NUT,FLANGE,TOPLK,3/8-16UNC,GDG,ZN	50	8051-212	5	WASHER,SPRING LOCK,1/4,ZN
11	0303-071	2	WASHER,NYLON,BLACK,1" OD	51	0200-320	2	WLMT,STOP LAP BAR
12	8040-486	1	NUT,HEX,NYLOCK,3/8-16 UNC,ZN	52	0200-321	2	PAD,RUBBER,W/ADHESIVE
13	0303-099	2	WASHER,STAR,3/8,INT/EXT TOOTH				
14	0304-485	4	SCREW,MACH,10-24x3/4,STAINLESS				
15	0090-165	4	SCREW MACHINE #10-24 X 1-1/4" ZN				
16	0090-163	4	NUT U 10-24 UNC				
17	8102-222	6	CAPSCREW,HH,3/8-16 UNCx1.0,GD8,ZN				
18	0200-291	1	INSULATION,MIDDLE				
19	2030-520	1	PLATE,FIREWALL				
20	0200-264	1	HOUSING,POWER SOURCE				
21	0304-579	6	PLUG,HOLE,PLASTIC,5/16				
22	0201-549	1	WLMT,LEVER,THROTTLE				
23	0304-501	1	TUBING, SPACER				
24	8011-227	1	BOLT,CARRIAGE,3/8-16 UNC x 2.0				
25	0090-012	8	WASHER FINISHING #10 SS				
26	2045-510	2	PLUG HOLE 1.375" P				
27	0200-292	1	INSULATION,BOTTOM				
28	0304-466	1	STOP,LAPBAR				
29	8050-240	4	WASHER,STAINLESS,1/4",MS				
30	0304-465	4	CAPSCREW,HH,M6-1.0x16mm				
31	0304-467	1	BRKT,LAPBAR				
32	8040-606	4	NUT,HEX,NYLOCK,1/2-13 UNC,ZN				
33	0304-468	2	RING,SNAP,LAPBAR				
34	8102-404	4	CAPSCREW,HH 1/2-13UNCx1.25 GD8				
35	8102-044	5	CAPSCREW,HH,1/4-20UNCx1.25,GD8				
36	0304-470	1	MNT,LAPBAR				
37	0304-477	2	SPACER,LAPBAR				
38	0304-471	2	SPRING,GAS,ASSIST				
39	0304-472	1	MNT,LAPBAR,SWITCH				
40	0304-476	1	GROMMET,RUBBER				

### Interior Panels

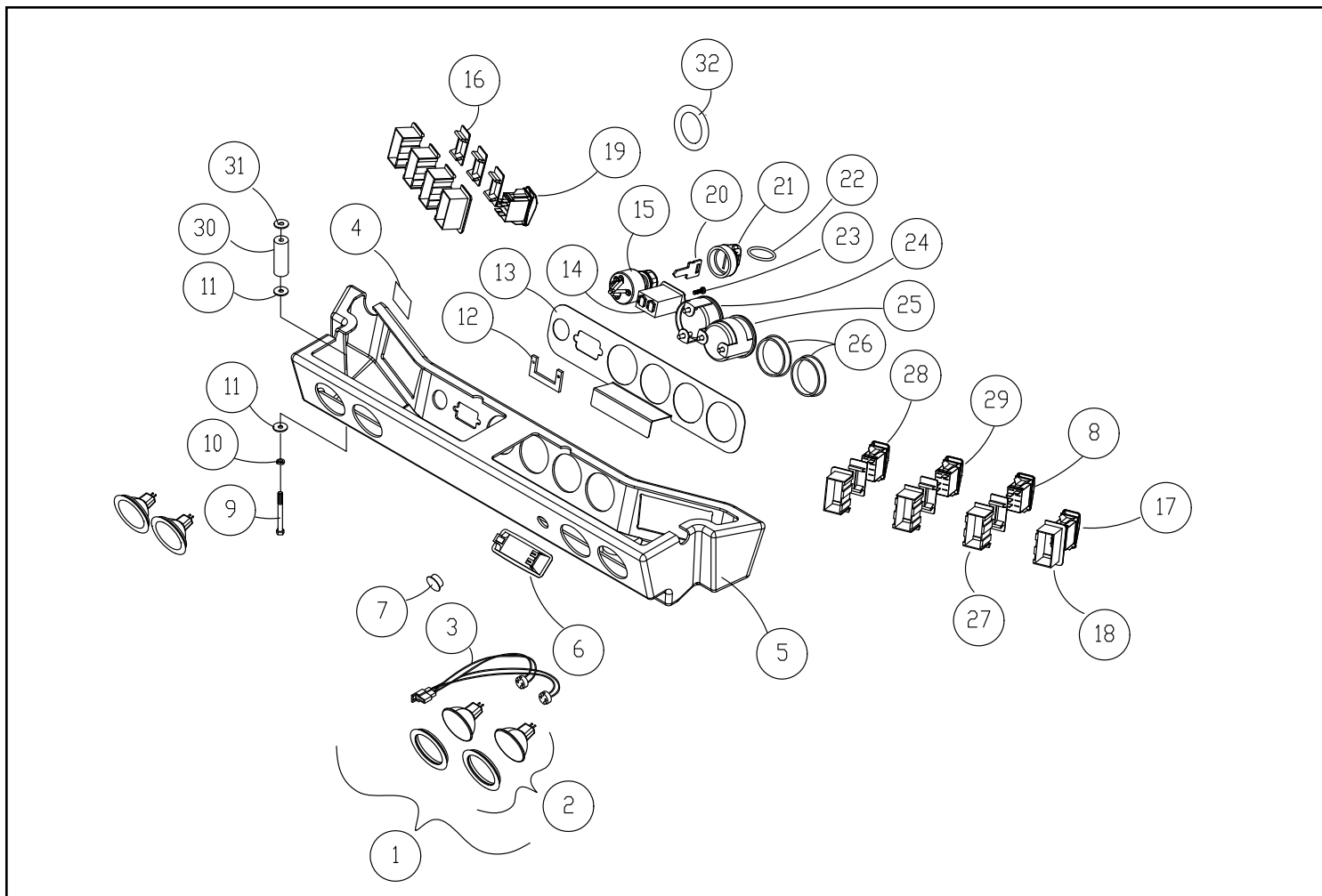
- P/N: 2030-629 RH Side Panel
- P/N: 2030-630 LH Side Panel
- P/N: 4030-124 Headliner
- P/N: 0200-457 RT-RR Corner Panel
- P/N: 0200-458 LT-RR Corner Panel
- P/N: 0200-460 Rear Deck Panel (Top)
- P/N: 0200-459 Back Panel (Firewall)
- P/N: 0200-455 RT Side Console Mat
- P/N: 0200-456 LT Side Console Mat



# LIGHT BAR ASSEMBLY (SN: DTA 05001-Current)

Section 2

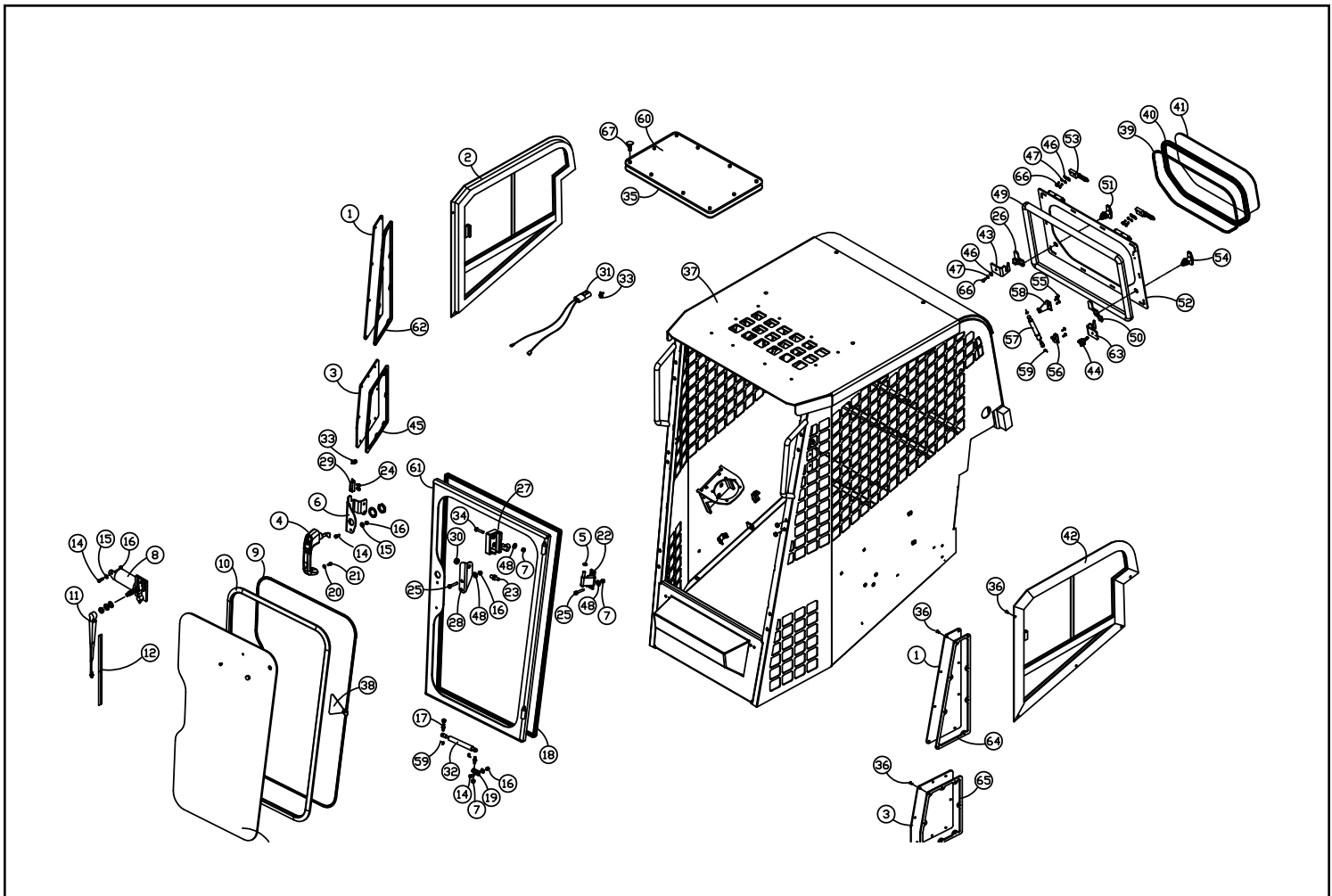
REF. NO.	PART NUMBER	QTY.	DESCRIPTION	REF. NO.	PART NUMBER	QTY.	DESCRIPTION
1	2045-755	4	KIT LIGHTS 35W W/ HARNESS				
2	2045-756	4	LIGHT 35W W/BEZEL				
3	0201-595	2	HARNESS,LIGHT,DOUBLE				
4	2010-159	1	DECAL DASH PANEL				
5	2030-241	1	CONSOLE MACHINED				
6	2030-245	1	LIGHT DOME				
7	0304-411	1	PLUG, HOLE, 3/4", PLASTIC				
8	0310-128	1	SWITCH,HEATER				
9	8102-142	2	CAPSCREW,HH,5/16-18x3.25,GD8				
10	0303-099	2	WASHER,STAR,3/8,				
11	8050-262	4	WASHER,WROUGHT,5/16,STD,ZN				
12	2030-397	1	PLATE MOUNT HOUR METER				
13	2030-272	1	PLATE BACKING GAUGES				
14	2045-502	1	METER HOUR				
15	0304-028	1	SWITCH,IGNITION,RC				
16	0310-138	6	PLUG				
17	0310-126	1	SWITCH,LIGHT				
18	0310-136	4	FRAME,END				
19	0200-252	2	SWITCH,3 POSITION,LOCKING				
20	2045-432	1	KEY IGNITION				
21	2045-792	1	COVER KEY IGNITION				
22	0304-551	1	RING,KEY				
23	8008-217	2	SCREW,MACH#6-32x0.5,PH,PAN				
24	2030-244	1	GAUGE WARNING INDICATION				
25	2030-243	1	GAUGE FUEL				
26	2030-303	2	PLUG FINISHING 2"				
27	0310-137	4	FRAME,MID				
28	0310-133	1	SWITCH,BEACON				
29	0304-123	1	SWITCH,ON/OFF,WIPER				
30	0201-952	2	SPACER .625OD, .38 ID x 2 5/16"				
31	0090-105	2	NUT PUSH 5/16"				
32	2030-431	1	DECAL IGNITION				



# ENCLOSED CAB (R.O.P.S.) ASSEMBLY (SN: DTA 05001-Current)

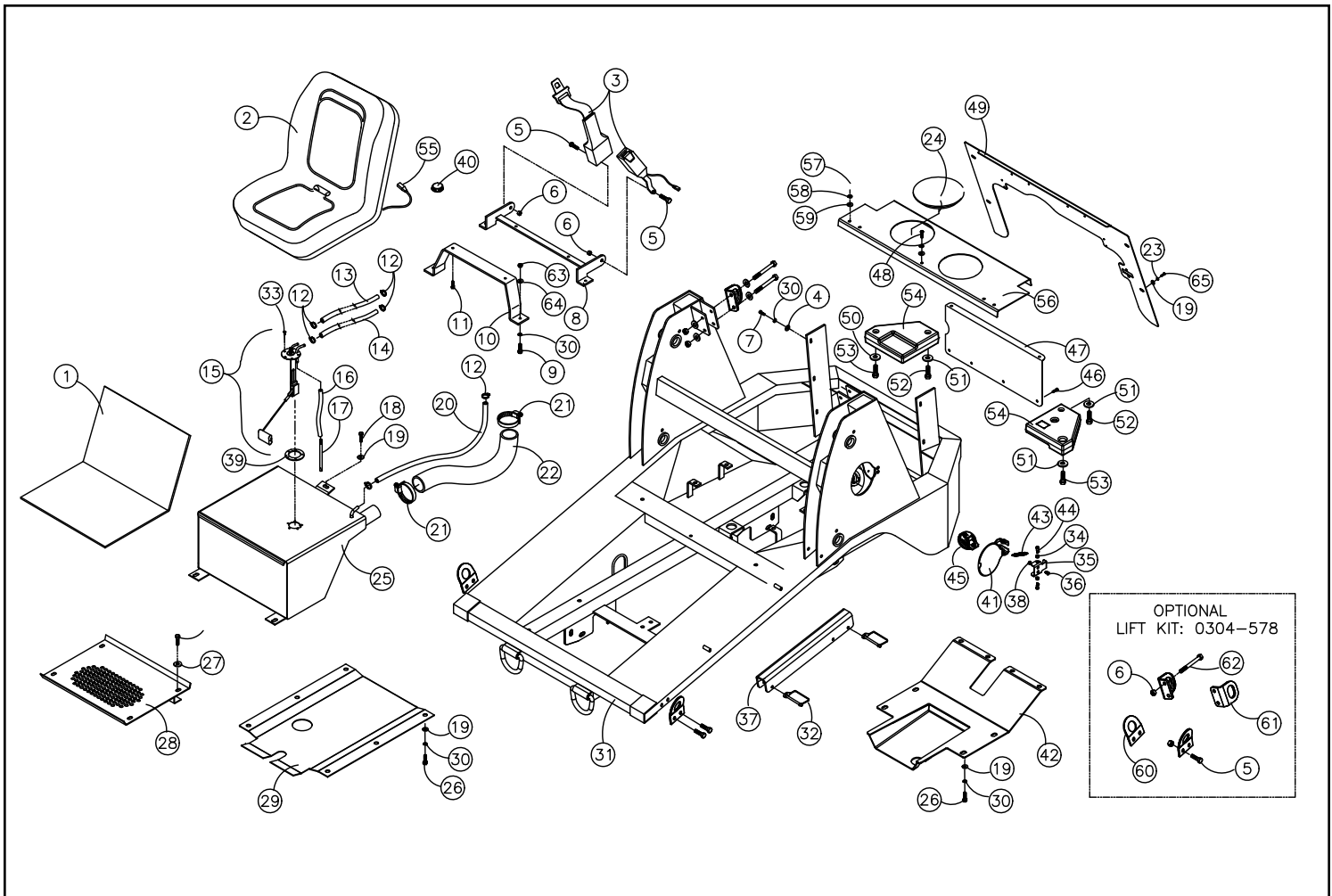
Section 3

REF. NO.	PART NUMBER	QTY.	DESCRIPTION	REF. NO.	PART NUMBER	QTY.	DESCRIPTION
1	0403-762	2	WINDOW UPPER CORNER	41	0403-842	1	WINDOW REAR
2	0402-769	1	GLASS,SLIDER,SINGLE,RH	42	0402-758	1	GLASS,SLIDER,SINGLE,LH
3	4010-125	2	PANEL PLASTIC LOWER SCREENS	43	0403-854	1	CATCH WINDOW RH
4	2075-406	1	HANDLE PUSH BUTTON	44	0090-304	1	KNOB STAR 1.75" RED
5	0314-208	2	BUSHING,HINGE	45	0403-767	1	SEAL RH UPPER WINDOW
6	2075-409	1	MOUNT DOOR LATCH	46	8050-222	5	WASHER,WROUGHT,1/4,STD,ZN
7	8040-426	8	NUT,HEX,NYLOCK,5/16-18 UNC,ZN	47	8051-212	5	WASHER,SPRING LOCK,1/4,ZN
8	0304-619	1	MOTOR,WIPER,85°	48	8050-262	8	WASHER,WROUGHT,5/16,STD,ZN
9	0310-495	12'	STRIP,LOCK	49	0090-055	7'	SEAL BULB 1.00 x 1.00
10	0304-674	1	SEAL,WINDOW,10FT	50	0403-847	1	LATCH ARM LH
11	0402-243	1	ARM,WIPER,15-19"	51	0403-913	1	T-HANDLE NON LOCKING
12	0402-244	1	BLADE,FLAT,18"	52	0403-845	1	WLMT FRAME WINDOW REAR
13	4030-106	1	WINDOW DOOR PT30/60 CE	53	0403-850	2	HINGE REAR WINDOW MALE
14	8102-040	4	CAPSCREW,HH,1/4-20 UNCx.75,GD8	54	0403-846	1	T-HANDLE LOCKING
15	8050-222	4	WASHER,WROUGHT,1/4,STD,ZN	55	8061-604	5	RIVET,ALUMINUM,3/16x.575
16	8040-426	2	NUT,HEX,NYLOCK,5/16-18 UNC,ZN	56	0310-641	1	MOUNT,SHOCK,90°
17	0304-495	2	STUD,BALL,10MM STUD	57	2045-503	1	SPRING GAS ASSIST
18	0304-484	11'	TRIM,CAB	58	0200-552	1	MNT,BRACKET,BALLSTUD
19	2030-348	1	MOUNT SPRING	59	0200-545	4	CLIP,SAFETY,GAS SPRING
20	8050-240	1	WASHER,STAINLESS,1/4",MS	60	0200-606	1	PANEL ROOF LEXAN
21	0304-486	1	CAPSCREW,HH,M6-1.0x14	61	0403-478	1	WLMT,DOOR,W/HINGES
22	0403-481	2	ASSY HINGE DOOR CAST LH	62	0403-766	1	SEAL LH UPPER WINDOW
23	2075-408	1	STRIKE	63	0403-853	1	CATCH WINDOW LH
24	0090-059	2	SCREW MACHINE #10 x .63 PH SELF DRILLING	64	0403-764	1	SEAL LH UPPER WINDOW
25	8102-136	6	CAPSCREW,HH,5/16-18x1.75 ZN GD	65	0403-765	1	SEAL LH LOWER WINDOW
26	0403-848	1	LATCH ARM RH	66	8102-039	5	CAPSCREW,HH,1/4-20UNCx.625,GD8
27	2075-407	1	HANDLE INSIDE	67	0090-347	10	SCREW TH PH 1/4-20 X 1.25 ZN
28	2075-416	1	MOUNT STRIKE				
29	0403-896	1	SWITCH DOOR PUSH BUTTON				
30	0090-135	1	NUT NYLOCK M12 X 1.0 ZC				
31	0304-573	1	HARNES, WIPER, B				
32	0403-630	1	SPRING DAMPENED DOOR				
33	0090-167	4	TIE CABLE MOUNT				
34	8102-135	2	CAPSCREW,HH,5/16-18X1.50ZN,GD8				
35	0200-607	1	SEAL PANEL ROOF				
36	0090-109	32	SCREW TH PH 1/4-20 x 1.00 ZN P				
37	2030-511	1	ROPS PT30/50/60				
39	0310-495	5.1'	STRIP,LOCK				
38	0201-748	2	ASSY,TAG,EMERGENCY EXIT				
40	1059-015	5.1'	SEAL,WINDOW				



# CHASSIS ASSEMBLY (SN: DTA 05001-Current)

REF. NO.	PART NUMBER	QTY.	DESCRIPTION	REF. NO.	PART NUMBER	QTY.	DESCRIPTION
1	2010-181	1	MAT FLOOR	41	2030-317	1	DOOR, FUEL
2	0304-045	1	SEAT	42	2010-107	1	PLATE,SKID,REAR
3	0304-248	1	BELT,SEAT 2" RETRACTABLE	43	2030-320	1	SPRING EXTENSION 2.36"
4	8050-282	6	WASHER,WROUGHT,3/8,STD,ZN	44	0090-137	2	SCREW SHOULDER-HSH 5/16-18 X 1.00
5	8102-404	6	CAPSCREW,HH 1/2-13UNCx1.25 GD8	45	4046-088	1	CAP FUEL YELLOW
6	8040-606	8	NUT,HEX,NYLOCK,1/2-13 UNC,ZN	46	8102-128	7	CAPSCREW,HH 5/16-18UNCx7/8 GR8 ZN
7	8102-224	6	CAPSCREW,HH,3/8-16UNCx1.25,GD8	47	0304-241	1	SCREEN,BACK
8	0304-206	1	WLMT,MNT,SEAT,REAR	48	8102-039	3	CAPSCREW,HH,1/4-20UNCx.625,GD8
9	0200-390	4	CAPSCREW,HH,3/8-16x1.75",GD8	49	2010-457	1	SURROUND, ENGINE
10	2010-434	1	MOUNT SEAT FRONT	50	8050-342	1	WASHER,WROUGHT,1/2,ZN
11	8102-130	4	CAPSCREW,HH 5/16-18x3/4,GR8	51	8050-347	3	WASHER,WROUGHT,1/2,STD,ZN
12	0300-732	6	CLAMP,HOSE,#4	52	8102-412	2	CAPSCREW,HH 1/2-13UNCx3.25
13	0200-361	1	HOSE,FUEL,3/16IDx35.00"	53	8102-409	2	CAPSCREW,HH,1/2-13 UNCx2.5,GD8
14	0304-510	1	HOSE,FUEL,5/16x34"	54	2010-466	2	WEIGHT REAR
15	2010-210	1	ASSY SENDING UNIT	55	0304-662	1	HARNESSEAT
16	0304-447	1	HOSE,7/16X5/16POLY,1.30FT	56	2030-583	1	COVER FIREWALL
17	0301-375	1	WEIGHT,IN-TANK	57	8102-044	4	CAPSCREW,HH,1/4-20UNCx1.25,GD8,ZN
18	8102-130	1	CAPSCREW,HH 5/16-18x3/4,GR8	58	8051-212	2	WASHER,SPRING LOCK,1/4,ZN
19	8050-262	15	WASHER,WROUGHT,5/16,STD,ZN	59	8050-221	5	WASHER,FLAT,1/4,SAE
20	0200-367	1	HOSE,FUEL,VENT,3/8IDx30.00"	60	0304-576	2	BRACKET,LIFT
21	0300-686	2	CLAMP,HOSE,2.0,#32	61	0314-032	2	PLATE,LIFT,FRONT
22	0304-037	1	HOSE,FILL,DIESEL,FUEL	62	8102-414	4	CAPSCREW,HH,1/2-13UNCx4.0,GD8,
23	8051-242	4	WASHER,SPRING LOCK,5/16,ZN	63	0402-263	4	NUT,HEX,NYLOCK5/16-18,INSERT/C
24	0200-437	2	PLUG,HOLE,6"	64	8050-247	4	WASHER,WROUGHT,5/16,SAE,ZN
25	2010-184	1	WLMT FUEL TANK	65	8102-128	4	CAPSCREW,HH 5/16-18UNCx7/8 GR8
26	8102-222	18	CAPSCREW,HH,3/8-16 UNCx1.0,GD8				
27	0300-980	4	WASHER,1.447 x .406 x .125				
28	2010-559	1	WLMT FLOOR PAN				
29	0304-198	1	PLATE,SKID,CENTER				
30	8051-272	24	WASHER,SPRING LOCK,3/8,ZN				
31	2010-150	1	WLMT,CHASSIS,PT-30 (WHITE)				
32	0201-477	2	CPIN,LOCKING,D-RING,3.00"				
33	0304-157	5	SCREW,ORING,3/16-32x1/2,STAINL				
34	0090-139	2	BUSHING PLASTIC .5 OD X .38 ID				
35	2030-315	1	MOUNT,DOOR,FUEL				
36	0090-138	2	SCREW CAP HSFH 5/16-18 X .75 BLK ZC				
37	2010-443	1	STOP LOADER				
38	0090-003	2	NUT,WELD,HEX,5/16-18				
39	0304-617	1	GASKET,TANK,FUEL				
40	2010-127	1	SWITCH,SEAT (TWIST IN STYLE)				

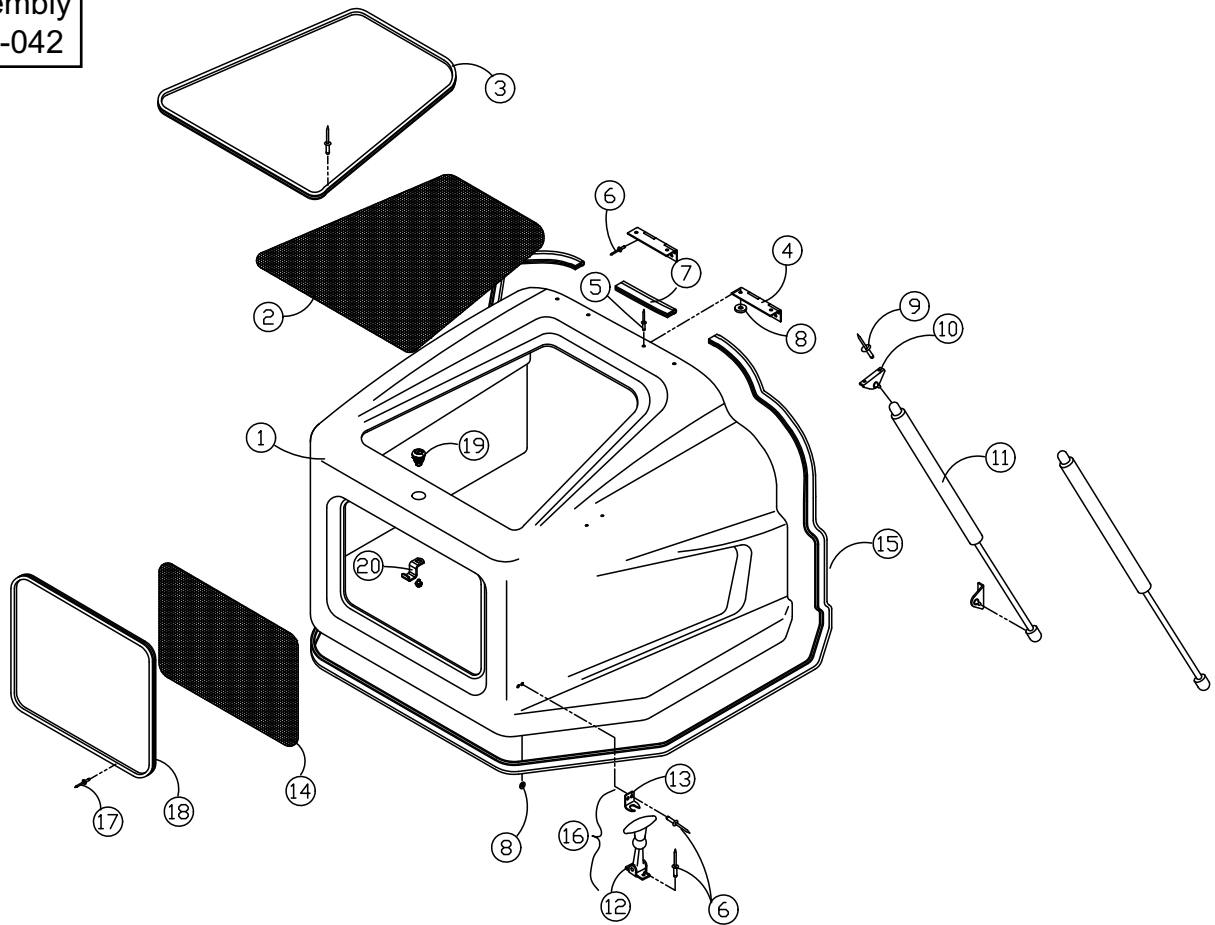




# HOOD ASSEMBLY (SN: DTA 05001-Current)

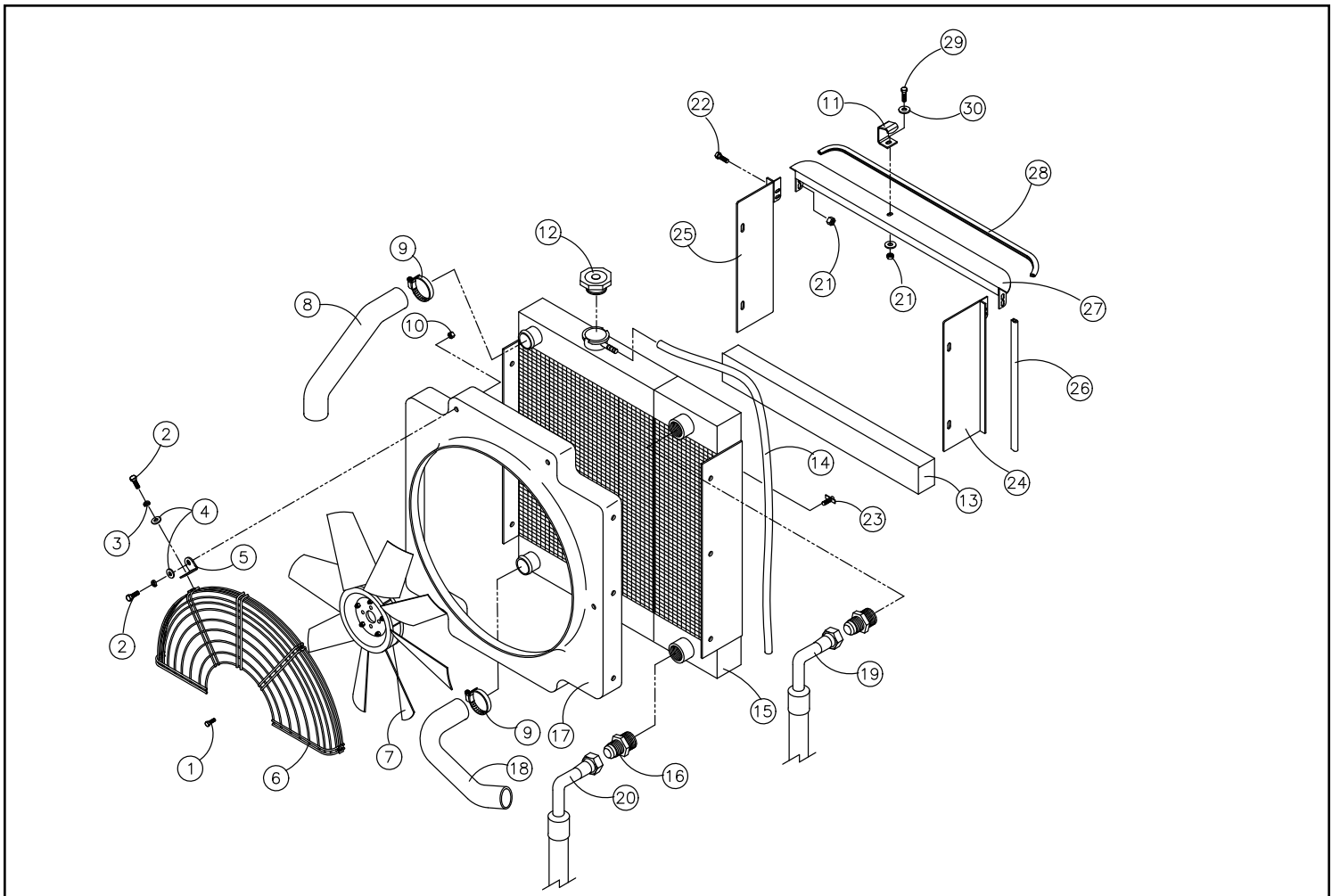
REF. NO.	PART NUMBER	QTY.	DESCRIPTION	REF. NO.	PART NUMBER	QTY.	DESCRIPTION
1	4010-043	1	HOOD PT30				
2	0304-664	1	SCREEN,HOOD,TOP,B				
3	0304-694	1	TRIM,HOOD,5.5'				
4	2010-728	2	HINGE,DETACHABLE				
5	8061-648	4	RIVET,LARGE HEAD,3/16 x .575				
6	8060-728	12	RIVET,BLIND3/16X.550 1Y SSB66S				
7	2010-077	1	TRIM,SEAL,HOOD,MID.				
8	0302-965	8	WASHER,RIVET,#7				
9	8061-648	4	RIVET,LARGE HEAD,3/16 x .575 A				
10	0310-641	4	MOUNT,SHOCK,90^				
11	0200-232	2	SPRING,GAS ASSIST				
12	0403-978	2	PARTIAL (Rubber T Handle				
13	0403-977	2	KEEPER (Metal Retainer				
14	0304-663	1	SCREEN,HOOD,BACK,B				
15	2010-076	2	TRIM,SEAL,HOOD				
16	0302-042	2	LATCH,RUBBER,T-HANDLE				
17	8060-211	28	RIVET,BLIND,ALUM,0.125 x 0.75,				
18	0304-693	1	TRIM,HOOD,5'				
19	2030-387	1	LOCK				
20	2010-196	1	PAWL LOCK				

**Hood Assembly**  
P/N: 4010-042



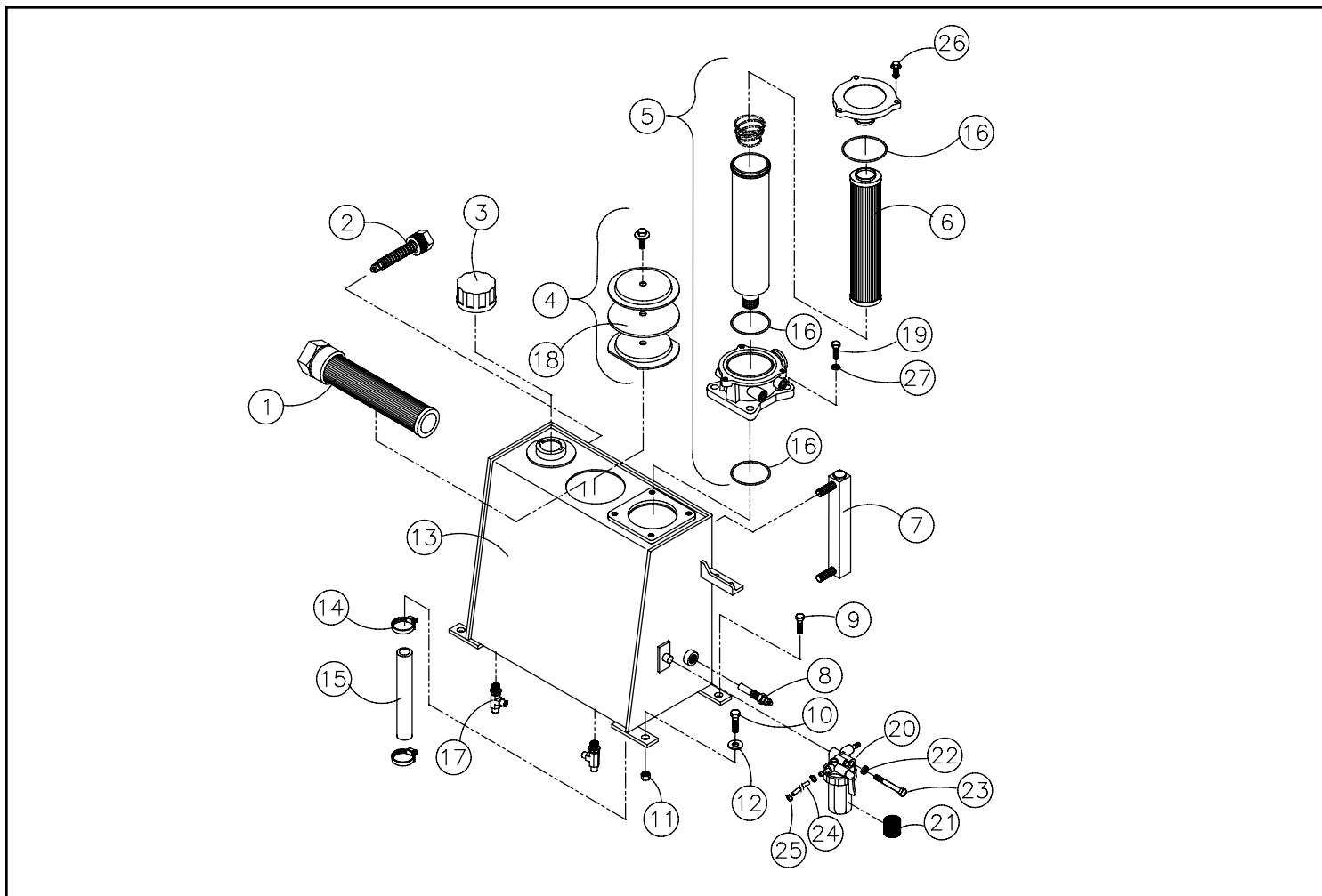
# RADIATOR/OIL COOLER ASSEMBLY (SN: DTA 05001-Current)

REF. NO.	PART NUMBER	QTY.	DESCRIPTION	REF. NO.	PART NUMBER	QTY.	DESCRIPTION
1	0305-011	1	CAPSCREW,HH,M6x1.0x20mm,ZN				
2	8102-040	8	CAPSCREW,HH,1/4-20 UNCx.75,GD8				
3	8051-212	4	WASHER,SPRING LOCK,1/4,ZN				
4	8050-222	8	WASHER,WROUGHT,1/4,STD,ZN				
5	0304-300	4	MNT,FAN GUARD				
6	2010-674	2	GUARD FAN				
7	0304-009	1	FAN,MULTI-WING				
8	0304-035	1	HOSE,RADIATOR, TOP				
9	0300-686	4	CLAMP,HOSE,2.0,#32				
10	8040-366	4	NUT,1/4-20UNC,NYLOK				
11	2010-194	1	BRACKET LOCK				
12	0304-458	1	CAP,RADIATOR,16#				
13	0304-285	1	GASKET,COOLER (LOWER)				
14	0304-444	1	HOSE,7/16 x 5/16 POLY,3FT				
15	0304-014	1	ASSY,COOLER & RESERVOIR				
16	0310-313	2	ADAPTER,12MFFOR-12MB				
17	0304-032	1	SHROUD,FAN,RC-30 (BLACK)				
18	0304-036	1	HOSE,RADIATOR,BOTTOM				
19	2030-079	1	HOSE,12G1,12FFORX90S,12FFORX,64.00"				
20	2010-484	1	HOSE -8 4000PSI 12FFORX90S 12FFORX 45"				
21	8040-366	5	NUT,HEX,NYLOCK,1/4-20 UNC,ZN				
22	8102-039	4	CAPSCREW,HH,1/4-20UNCx.625,GD8				
23	0302-371	1	PETCOCK,RADIATOR				
24	0304-536	1	WLMT,SHIELD				
25	0304-538	1	WLMT,SHIELD				
26	0304-690	2	TRIM,HOOD,17.5				
27	0304-537	1	WLMT, TOP				
28	0304-692	1	TRIM,HOOD,25				
29	8102-040	1	CAPSCREW,HH,1/4-20 UNCx.75,GD8 ZN				
30	8050-222	2	WASHER,WROUGHT,1/4,STD,ZN				



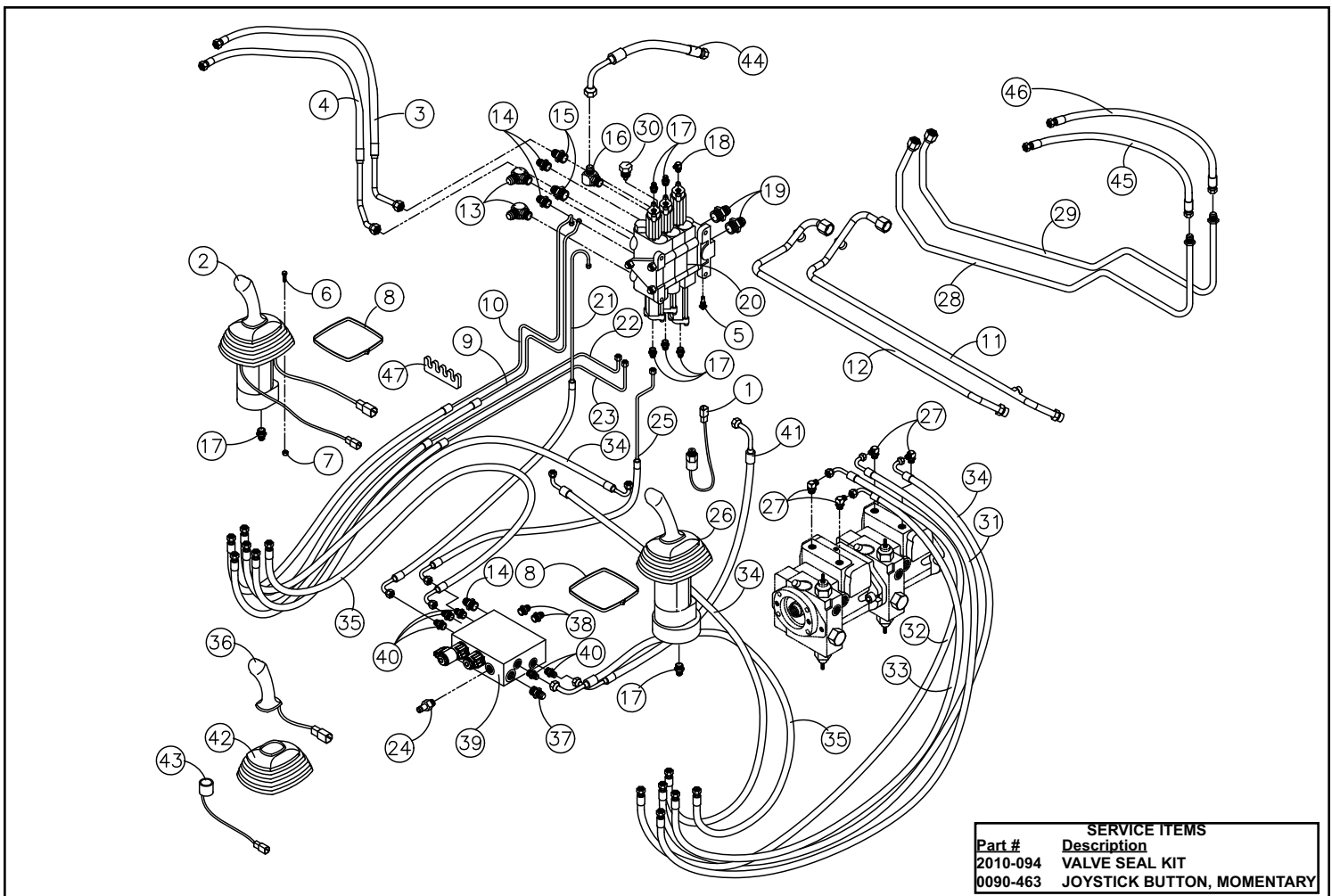
# HYDRAULIC RESERVOIR ASSEMBLY (SN: DTA 05001-Current)

REF. NO.	PART NUMBER	QTY.	DESCRIPTION	REF. NO.	PART NUMBER	QTY.	DESCRIPTION
1	0200-276	1	STRAINER,SUCTION,STEEL				
2	0304-450	1	VALVE,RELIEF,RES.				
3	2030-450	1	HYDRAULIC CAP				
4	0304-452	1	ASSY,COVER,ACCESS				
5	0200-203	1	ASSY,FILTER,HYD,4-BOLT				
6	0200-204	1	ELEMENT,FILTER,MP				
7	0304-642	1	GAUGE,SIGHT 5"				
8	0307-879	1	SWITCH,TEMP,OIL,225° F				
9	8102-134	1	CAPSCREW,HH,5/16-18UNCx1.25GD8				
10	8102-132	3	CAPSCREW,HH,5/16-18UNCx1.0 GD8				
11	8040-426	4	NUT,HEX,NYLOCK,5/16-18 UNC,ZN				
12	8050-262	4	WASHER,WROUGHT,5/16,STD,ZN				
13	2010-191	1	RESERVOIR HYDRAULIC PT30				
14	0304-384	2	CLAMP,HOSE # 16				
15	0304-442	1	HOSE,RES.				
16	0200-325	3	O-RING,FILTER CAP				
17	0090-232	2	ADAPTER TEE				
18	0200-221	1	GASKET,COVER,ACCESS				
19	8104-132	4	CAPSCREW,HH 5/16-24UNFx 1 GD 8				
20	0200-338	1	ASSY,FILTER,WATER				
21	0200-617	1	SCREEN WATER FILTER ASSY				
22	8051-242	1	WASHER,SPRING LOCK,5/16,ZN				
23	8102-137	1	CAPSCREW,HH,5/16-18UNCx2.00				
24	0304-834	1	HOSE,LINE,FUEL,9"				
25	0300-732	2	CLAMP,HOSE #4				
26	2051-143	1	CAPSCREW,HH,M6-1x25				
27	8051-242	4	WASHER,SPRING LOCK,5/16,ZN				



# HYDRAULIC CONTROL ASSEMBLY (SN: DTA 05001-05572)

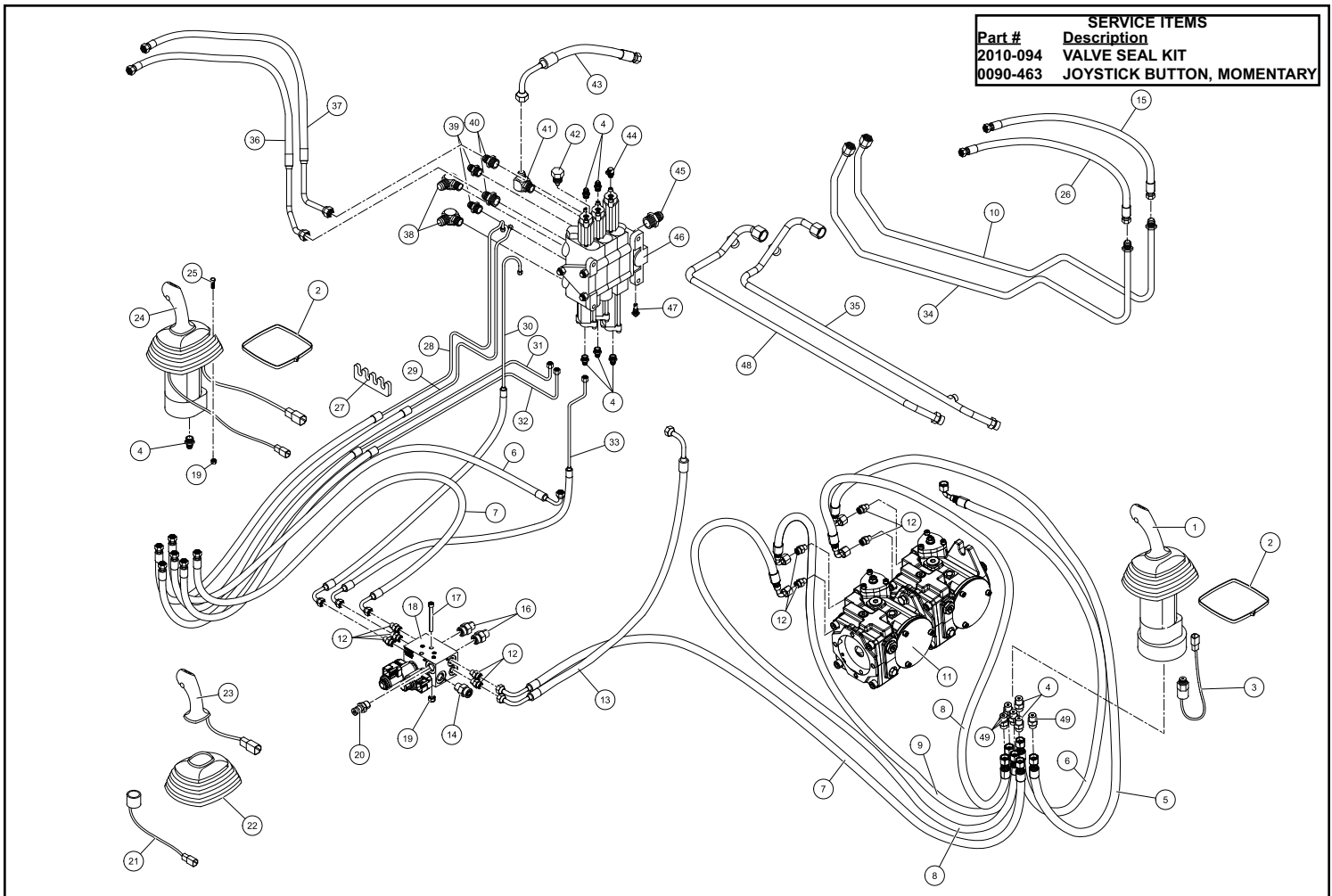
REF. NO.	PART NUMBER	QTY.	DESCRIPTION	REF. NO.	PART NUMBER	QTY.	DESCRIPTION
1	0304-441	1	SWITCH,PRESSURE	41	2030-036	1	HOSE,4G1,4FFORX90M,6FFORX,36.0
2	0201-263	1	ASSY,JOYSTICK,RH	42	0201-775	2	BOOT,JOYSTICK,RH
3	2010-404	1	ASSY TUBE TILT TOP	43	0304-516	1	MAGNET,DETENT
4	2010-405	1	ASSY TUBE TILT BTM	44	2010-470	1	HOSE -8 4000PSI 8FFORXL90 8-12FFORX 13.5
5	2030-640	1	VALVE,RELIEF,PORT,3000PSI	45	2010-485	1	HOSE -8 4000PSI 8FFORX 8FFORX 26
6	8102-040	8	CAPSCREW,HH,1/4-20 UNCx.75,GD8	46	2010-486	1	HOSE -8 4000PSI 8FFORX 8FFORX 28
7	8040-366	8	NUT,HEX,NYLOCK,1/4-20 UNC,ZN	47	0304-395	3	CLAMP,PILOT LINES
8	0307-882	2	TIE,CABLE,BLACK,18.1",W/STL INSERT				
9	2030-062	1	ASSY,LINE,CONTROL,UP,LOADER				
10	2030-059	1	ASSY,LINE,CONTROL,DUMP,BUCKET				
11	2010-418	1	ASSY TUBE BOOM TOP				
12	2010-419	1	ASSY TUBE BOOM BTM				
13	0310-330	2	ADAPTER,10MFFOR-8MB-90				
14	0310-345	3	ADAPTER,8MFFOR--8MB				
15	0310-934	2	ADAPTER,8MFFOR-10MB,8-10 F5OLO-S				
16	0201-668	1	ADAPTER,FF6801-10-10NW0				
17	0201-309	17	ADAPTER,FS6400-04-06-0				
18	0201-319	1	ADAPTER,FS6801-04-06-NW0				
19	0090-234	2	ADAPTER 8FFOR-12MB FS6400-08-12-O				
20	0304-020	1	VALVE,LOADER				
21	2030-067	1	ASSY,LINE,CONTROL, TOP,AUX				
22	2030-057	1	ASSY,LINE,CONTROL,DOWN,LOADER				
23	2030-055	1	ASSY,LINE,CONTROL,CURL,BUCKET				
24	0314-043	1	COUPLING,PORT,TEST,MALE,#6SAE-				
25	2030-064	1	ASSY,LINE,CONTROL,BOTTOM,AUX.				
26	0201-264	1	ASSY,JOYSTICK,LH				
27	0201-314	4	ADAPTER,FS6801-04-04-NW0				
28	2010-469	1	TUBE AUX TOP				
29	2010-468	1	TUBE AUX BTM				
30	0304-842	1	VALVE,ANTI-VOID				
31	2030-051	1	HOSE,4G1,4FFORX90S,4FFORX,41.50"				
32	2030-050	1	HOSE,4G1,4FFORX,4FFORX,51.00"				
33	2030-049	1	HOSE,4G1,4FFORX,4FFORX,47.00"				
34	2030-052	3	HOSE,4G1,4FFORX90S,4FFORX,47.50"				
35	2010-488	2	HOSE -4 4000PSI 4FFORX 4FFORX90L 62"				
36	0201-152	2	GRIP,CONTROL				
37	0310-329	1	ADAPTER,6MFFOR-6MB				
38	0090-236	2	ADAPTER FS6400-04-06-O-R0.035				
39	0304-620	1	MANIFOLD,PILOT				
40	0201-311	5	ADAPTER,FS6400-04-04-0				



Part #	Description
2010-094	VALVE SEAL KIT
0090-463	JOYSTICK BUTTON, MOMENTARY

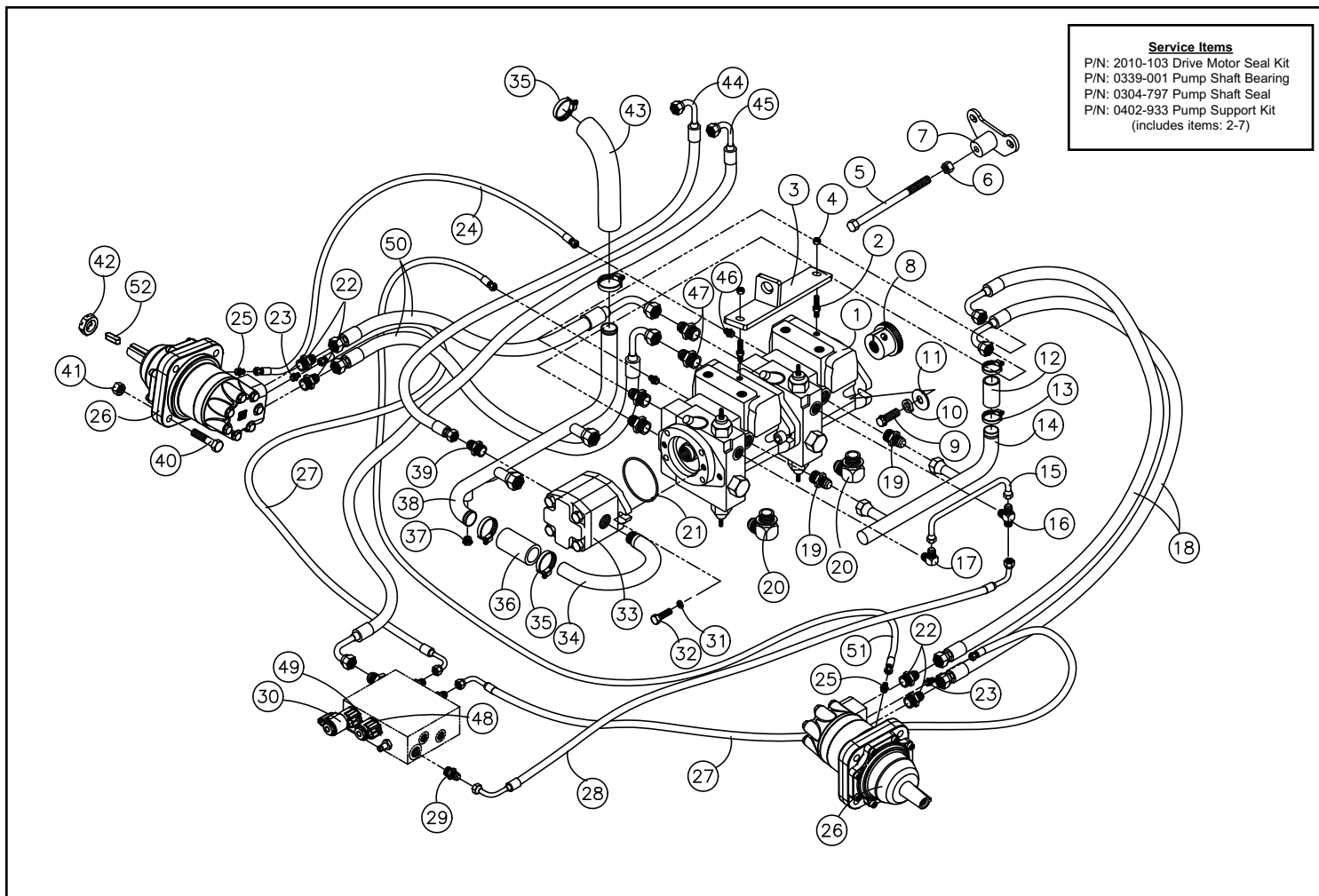
# HYDRAULIC CONTROL ASSEMBLY (SN: DTA 05573-Current)

REF. NO.	PART NUMBER	QTY.	DESCRIPTION	REF. NO.	PART NUMBER	QTY.	DESCRIPTION
1	0201-264	1	ASSY,JOYSTICK,LH	41	0201-668	1	ADAPTER,FS6801-10-10NW0
2	0307-882	2	TIE,CABLE,BLACK,18.1",W/STL INSERT BT-5L	42	0304-842	1	VALVE,ANTI-VOID 5475
3	0304-441	1	SWITCH,PRESSURE NASON	43	2010-470	1	HOSE -8 4000PSI 8FFORXL90 8-12FFORX 13.5
4	0201-309	13	ADAPTER,FS6400-04-06-0	44	0201-319	1	ADAPTER,FS6801-04-06-NW0
5	2010-708	1	HOSE, -4, 500 PSI, 4FFORX, 4FFORX90S, 49	45	0090-234	1	ADAPTER 8FFOR-12MB FS6400-08-12-O
6	2030-052	2	HOSE,4G1,4FFORX90S,4FFORX,47.5	46	0304-020	1	VALVE,LOADER HUSCO 5000-C368
7	2010-488	2	HOSE -4 4000PSI 4FFORX 4FFORX90L 62"	47	2030-640	1	VALVE RELIEF 3000 PSI
8	2010-707	2	HOSE, -4, 500 PSI, 4FFORX, 4FFORX90S, 55	48	2010-419	1	ASSY TUBE BOOM BTM
9	2010-709	1	HOSE, -4, 500 PSI, 4FFORX, 4FFORX90S, 52	49	2010-734	4	ADAPTER ORIFICE .040" FS6400-04-06
10	2010-468	1	TUBE AUX BTM				
11	2010-692	1	PUMP TANDEM 19CC BONDIOLI & PAVESI				
12	0201-311	9	ADAPTER,FS6400-04-04-0				
13	2030-036	1	HOSE,4G1,4FFORX90M,6FFORX,36.0				
14	0310-329	1	ADAPTER,6MFFOR-6MB				
15	2010-486	1	HOSE -8 4000PSI 8FFORX 8FFORX 28				
16	0201-309	2	ADAPTER,FS6400-04-06-0				
17	8005-498	2	CAPSCREW,SOC HD,1/4-20UNCx2.25				
18	2010-638	1	PILOT GEN BLOCK #6 BRAKE PORTS				
19	8040-366	10	NUT,HEX,NYLOCK,1/4-20 UNC,ZN				
20	0314-043	1	COUPLING,PORT,TEST,MALE,#6SAE-M 6V3965				
21	0304-516	1	MAGNET,DETENT				
22	0201-775	2	BOOT,JOYSTICK,RH				
23	0201-152	2	GRIP,CONTROL				
24	0201-263	1	ASSY,JOYSTICK,RH 08350893				
25	8102-040	8	CAPSCREW,HH,1/4-20 UNCx.75,GD8 ZN				
26	2010-485	1	HOSE -8 4000PSI 8FFORX 8FFORX 26				
27	0304-395	3	CLAMP,PILOT LINES				
28	2030-059	1	ASSY,LINE,CONTROL,DUMP,BUCKET				
29	2030-062	1	ASSY,LINE,CONTROL,UP,LOADER				
30	2030-067	1	ASSY,LINE,CONTROL,TOP,AUX				
31	2030-057	1	ASSY,LINE,CONTROL,DOWN,LOADER				
32	2030-055	1	ASSY,LINE,CONTROL,CURL,BUCKET				
33	2030-064	1	ASSY,LINE,CONTROL,BOTTOM,AUX.				
34	2010-469	1	TUBE AUX TOP				
35	2010-418	1	ASSY TUBE BOOM TOP				
36	2010-405	1	ASSY TUBE TILT BTM				
37	2010-404	1	ASSY TUBE TILT TOP				
38	0310-330	2	ADAPTER,10MFFOR-8MB-90				
39	0310-345	2	ADAPTER,8MFFOR--8MB				
40	0310-394	2	TUBE,HYD,FILTER,LF				



# DRIVE/AUXILIARY PUMP ASSEMBLY (SN: DTA 05001-05572)

REF. NO.	PART NUMBER	QTY.	DESCRIPTION	REF. NO.	PART NUMBER	QTY.	DESCRIPTION
1	0304-010	1	PUMP,TANDEM	41	8040-606	8	NUT,HEX,NYLOCK,1/2-13 UNC,ZN
2	0201-672	2	STUD,PLUG,#4	42	0090-229	2	NUT CASTLE 1.0-20 UNEF
3	2010-028	1	WLMT,SUPPORT,TRANS.	43	0304-528	1	HOSE,INTAKE,1.5x9
4	8040-486	2	NUT,HEX,NYLOCK,3/8-16 UNC,ZN	44	2010-475	1	HOSE -8 4000PSI 8FFORX 8FFORX90S 41"
5	8102-417	1	CAPSCREW,HH,1/2-13 UNCx5.5,GD8	45	2010-474	1	HOSE -8 4000PSI 8FFORX90L 8FFORX90S 90^ 42.5"
6	8042-602	1	NUT,HEX,1/2-13 UNC,ZN	46	0090-235	2	ADAPTER FS6400-04-08-O
7	2010-031	1	WLMT,BRKT,TRANS.	47	0310-332	4	ADAPTER,10MFFOR-12MB
8	0304-552	1	COUPLER,DRIVE,PUMP	48	0118-165	1	SPOOL,SOLENOID,2POSITION,3WAY
9	0304-133	2	CAPSCREW,12PT,1/2-13UNC X 1.5"	49	0118-164	1	SPOOL,SOLENOID,3POSITION,4WAY
10	0090-148	2	WASHER SPRING LOCK 1/2 ZN	50	2010-478	2	HOSE PT30 DRIVE RH
11	0304-404	2	WASHER,FLAT ZINC PLATED	51	2010-481	1	HOSE -4 4000 PSI 4FFORX 4FFORX45 43" LH
12	0304-442	1	HOSE,RES.	52	0090-230	2	KEY 1.00 x .375 x .375
13	0304-384	2	CLAMP,HOSE # 16				
14	2010-472	1	TUBE MANIFOLD CASE DRAIN				
15	2010-471	1	TUBE MANIFOLD CHARGE				
16	0201-542	1	ADAPTER,TEE,6FS-6FS-6NWO				
17	0310-328	1	ADAPTER,6MFFOR-6MB-90				
18	2010-479	2	HOSE PT30 DRIVE LH				
19	0310-345	2	ADAPTER,8MFFOR--8MB				
20	0310-324	2	ADAPTER,16MFFOR-12MB-90				
21	0300-696	1	O-RING,AUXILIARY PUMP				
22	2010-501	4	ADAPTER FS7002-10-12-BS				
23	2010-500	2	ADAPTER FS7002-04-04-BS				
24	2010-482	1	HOSE -4 4000 PSI 4FFORX 4FFORX45 47.5				
25	0201-311	2	ADAPTER,FS6400-04-04-0				
26	2010-269	2	MOTOR DRIVE				
27	2010-480	2	HOSE -4 4000 PSI 4FFORX 4FFORX90S 26.5"				
28	2030-046	1	HOSE,6G1,6FFORX90S,6FFORX90L,270^,23.00"				
29	0310-329	1	ADAPTER,6MFFOR-6MB				
30	0200-364	3	SOLENOID,W/DEUTSCH CONNECTOR				
31	8051-272	2	WASHER,SPRING LOCK,3/8,ZN				
32	8102-222	2	CAPSCREW,HH,3/8-16 UNCx1.0,GD8				
33	0304-013	1	PUMP,GEAR,AUXILIARY				
34	0304-258	1	TUBE,MANIFOLD,LOWER				
35	0300-687	4	CLAMP,HOSE,1.5,#24				
36	0304-437	1	HOSE,TRANNY				
37	0304-188	1	PLUG,6 ORING,HH				
38	2010-473	1	TUBE MANIFOLD UPPER				
39	0310-934	1	ADAPTER,8MFFOR-10MB,8-10 F5OLO-S				
40	8102-409	8	CAPSCREW,HH,1/2-13 UNCx2.5,GD8				



**Service Items**

P/N: 2010-103 Drive Motor Seal Kit  
P/N: 0339-001 Pump Shaft Bearing  
P/N: 0304-797 Pump Shaft Seal  
P/N: 0402-933 Pump Support Kit  
(includes items: 2-7)

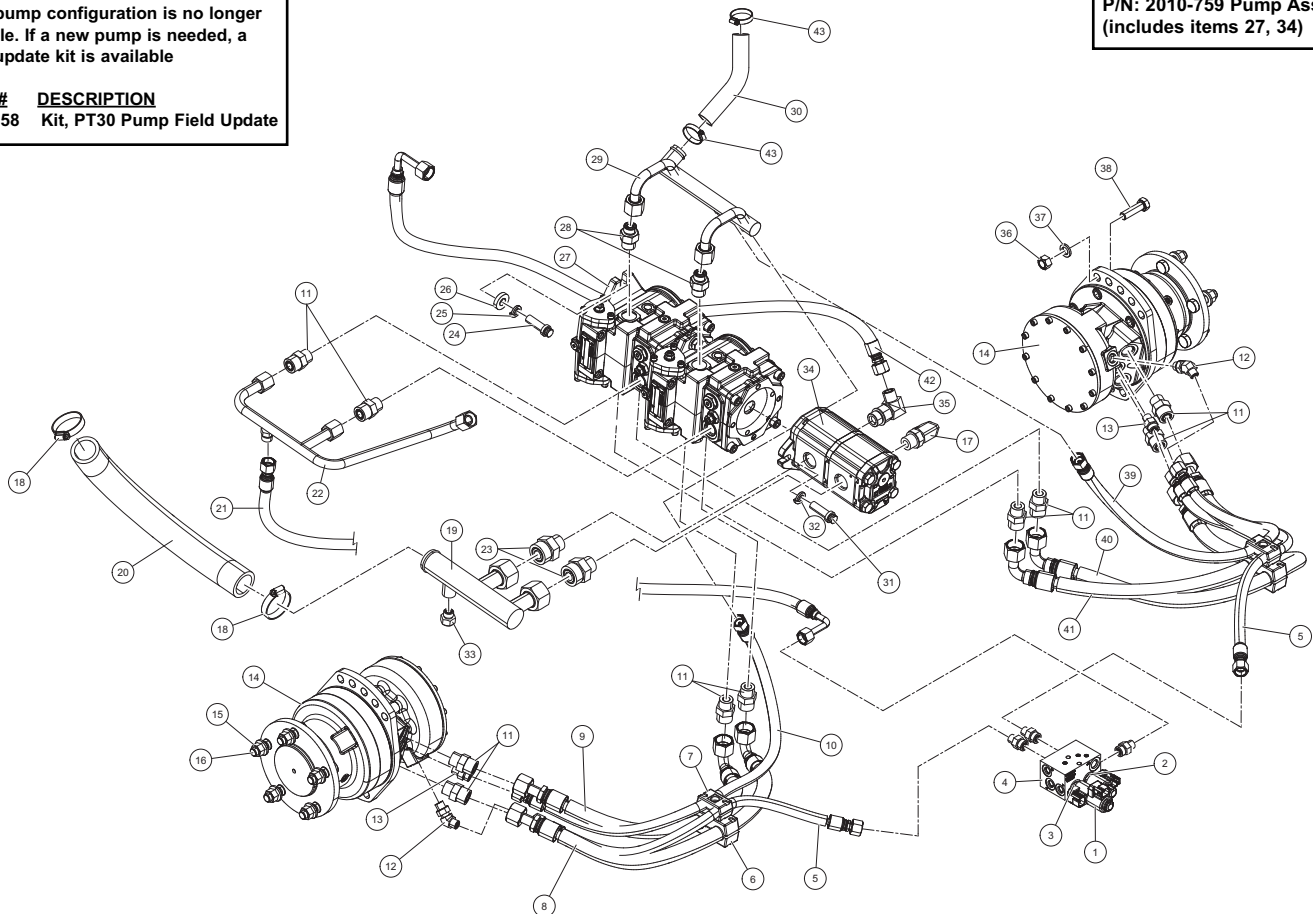
# DRIVE/AUXILIARY PUMP ASSEMBLY (SN: DTA 05573-Current)

REF. NO.	PART NUMBER	QTY.	DESCRIPTION	REF. NO.	PART NUMBER	QTY.	DESCRIPTION
1	7000-625	3	COIL PILOT GEN BLOCK	41	2010-700	1	HOSE, -10, 6000 PSI, 10FFORX, 10FFORX90S
2	2010-737	1	2-POS.3-WAY VALVE W/COIL	42	2010-475	1	HOSE -8 4000PSI 8FFORX 8FFORX90S 41"
3	2010-736	1	3-POS.4-WAY VALVE W/COILS	43	0304-384	2	CLAMP,HOSE # 16
4	2010-638	1	PILOT GEN BLOCK #6 BRAKE PORTS				
5	2010-704	2	HOSE, -6, 500 PSI, 6FFORX, 6FFORX110, 27				
6	0201-226	2	CLAMP,SET,T4100-PP				
7	0310-831	2	CLAMP, SET, T2062-PP BEHRINGER				
8	2010-701	1	HOSE, -10, 6000 PSI, 10FFORX, 10FFORX110				
9	2010-702	1	HOSE, -10, 6000 PSI, 10FFORX, 10FFORX110				
10	2010-705	1	HOSE, -6, 500 PSI, 6FFORX, 6FFORX110, 38				
11	0310-318	10	ADAPTER,10MFFOR-10MB				
12	2045-600	2	ADAPTER FS6802-04-06-NWO				
13	0310-329	2	ADAPTER,6MFFOR-6MB				
14	2010-571	2	MOTOR HYD MCR3F				
15	0200-282	10	NUT,FLANGE,M14x1.5				
16	0210-001	10	STUD,WHEEL,M14x1.5 174862				
17	0201-668	1	ADAPTER,FS6801-10-10NWO				
18	0300-687	2	CLAMP,HOSE,1.5,#24 H24				
19	2010-757	1	TUBE SUCTION				
20	2010-761	1	HOSE INTAKE CHARGE				
21	2010-760	1	HOSE -6 500 PSI 6FFOX90S , 6FFOX90L				
22	2010-758	1	TUBE CHARGE				
23	0310-323	2	ADAPTER,16MFFOR-12MB				
24	0304-133	2	CAPSCREW,12PT,1/2-13UNC X 1.5"				
25	0090-148	2	WASHER SPRING LOCK 1/2 ZN				
26	0304-404	2	WASHER,FLAT,1.125 OD x .5 ID x 1/4,ZN				
27	2010-692	1	PUMP TANDEM 19CC BONDIOLI & PAVESI INC				
28	0310-934	2	ADAPTER,8MFFOR-10MB,8-10 FSOLO-S				
29	2010-695	1	TUBE MANIFOLD CASE DRAIN				
30	2010-730	1	HOSE,RES.				
31	0303-095	2	CAPSCREW M10 x 1.5 x 25 HCS 10.9OZ				
32	0301-781	2	WASHER,SPLIT LOCK,10mm,ZN				
33	0304-188	1	PLUG,6 ORING,HH				
34	2010-765	1	PUMP,TANDEM,GEAR,AUXILIARY				
35	0090-228	1	ADAPTER 8FFORX-10MB-90 NWO FS6801-08-10-				
36	0700-124	10	NUT,TOPLock,1/2-13UNC,ZN,GD8				
37	2035-597	10	WASHER WROUGHT .531 x .886 x 0118 HARD Z				
38	8102-406	10	CAPSCREW,HH,1/2-13UNCx1.75,GD8				
39	2010-703	1	HOSE, -6, 500 PSI, 6FFORX, 6FFORX110, 35				
40	2010-699	1	HOSE, -10, 6000 PSI, 10FFORX, 10FFORX90S				

\* This pump configuration is no longer available. If a new pump is needed, a pump update kit is available

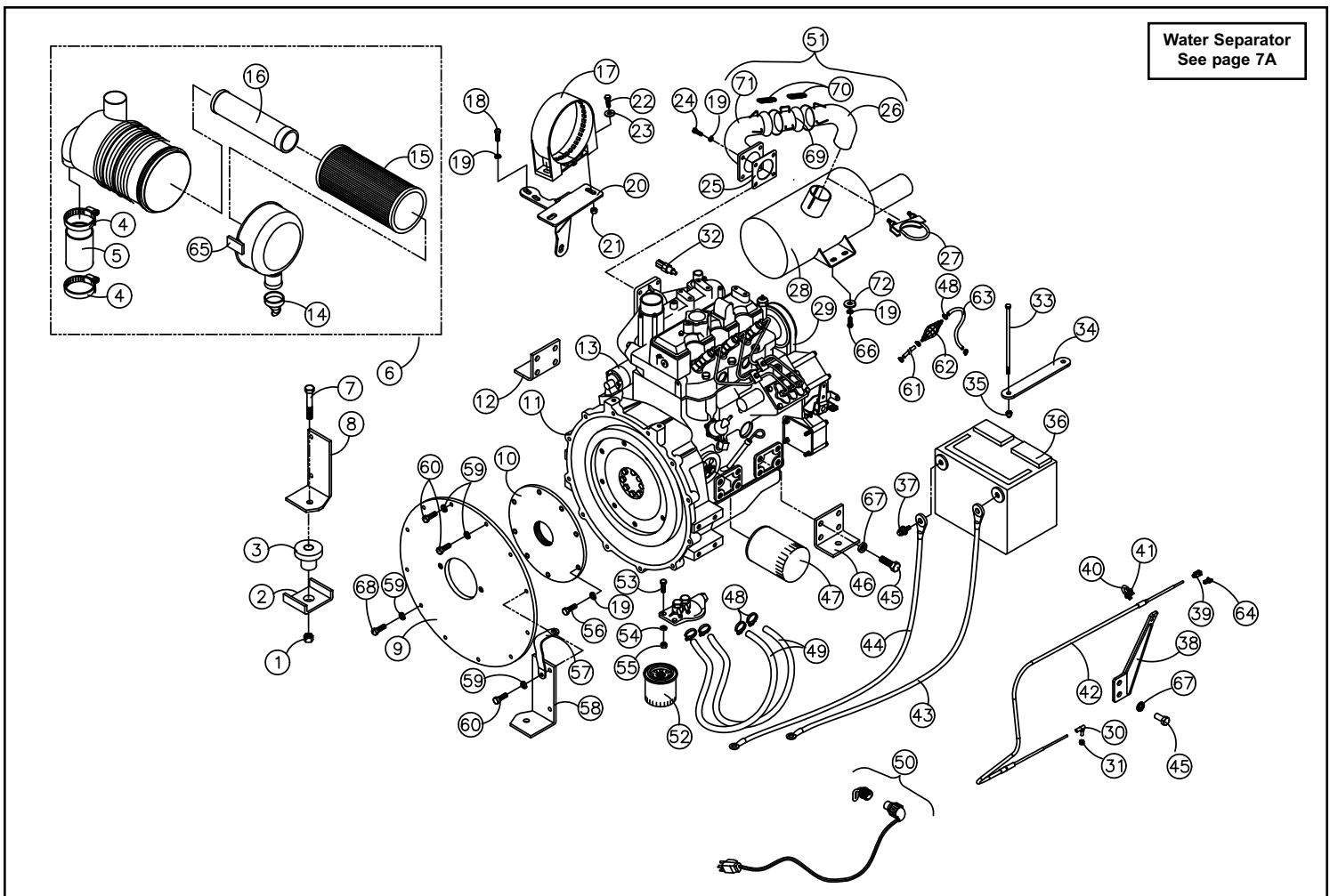
**PART # DESCRIPTION**  
0404-358 Kit, PT30 Pump Field Update

**P/N: 2010-759 Pump Assembly**  
(includes items 27, 34)



# ENGINE ASSEMBLY (SN: DTA 05001-Current)

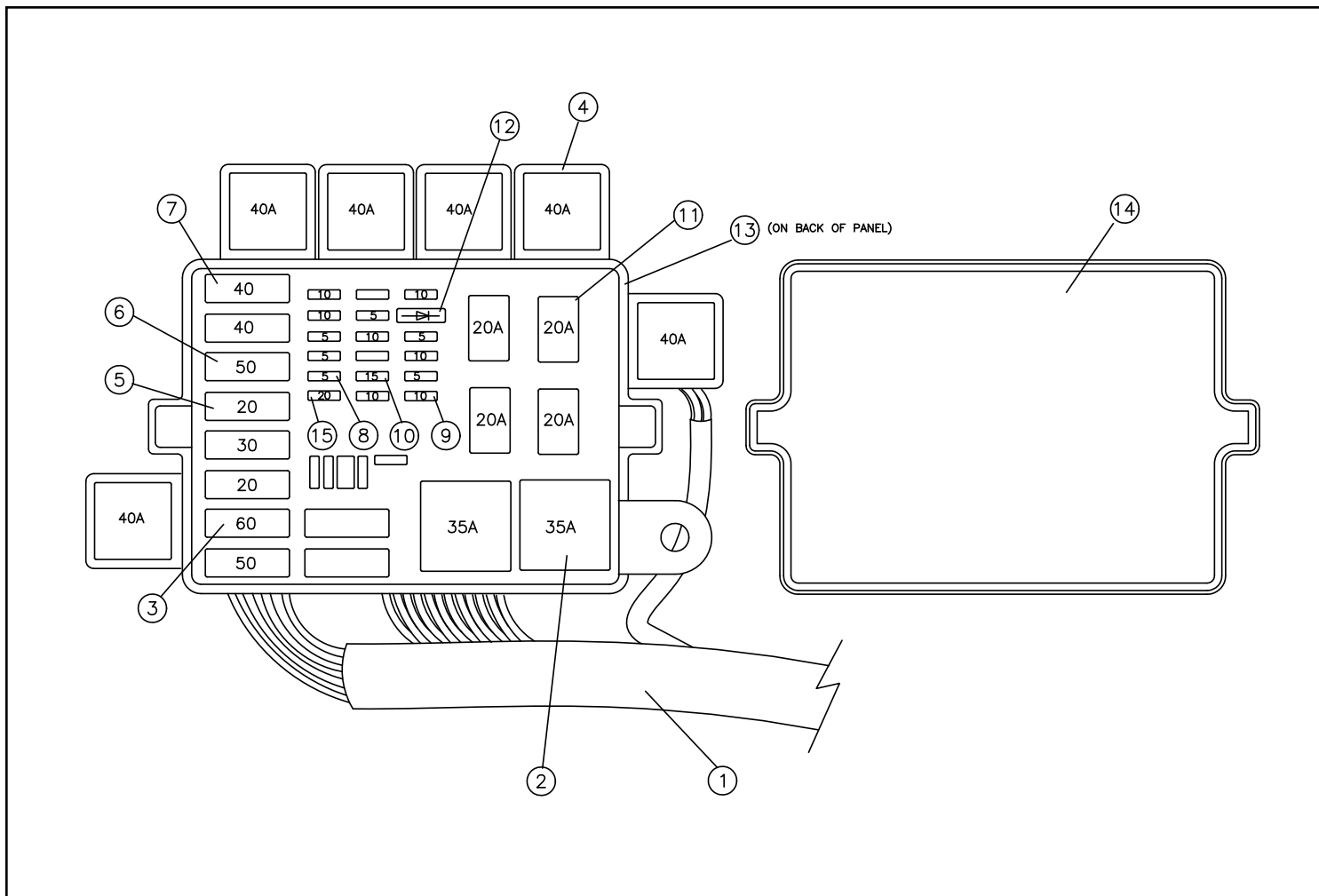
REF. NO.	PART NUMBER	QTY.	DESCRIPTION	REF. NO.	PART NUMBER	QTY.	DESCRIPTION
1	8040-726	4	NUT,HEX,NYLOCK,5/8-11 UNC,ZN	41	8040-366	2	NUT,HEX,NYLOCK,1/4-20 UNC,ZN
2	0304-948	4	LIMITER,MNT,MOTOR	42	0300-455	1	CABLE,THROTTLE
3	0300-458	4	MOUNT,ENGINE,REAR	43	0304-212	1	CABLE,BATTERY,NEGATIVE
4	0300-686	2	CLAMP,HOSE,2.0,#32	44	0304-211	1	CABLE,BATTERY,POSITIVE
5	0304-282	1	HOSE,INTAKE,ID2"x4"	45	0304-131	10	CAPSCREW,HH, M14-1.5 X30MM,GD8
6	0304-034	1	ASSY,AIR CLEANER,3013	46	0304-130	1	WLMT,MNT,ENGINE
7	8102-561	4	CAPSCREW,HH,5/8-11UNCx3.00,GD8	47	0200-377	1	FILTER,OIL,ENGINE
8	0304-128	1	WLMT,MNT,ENGINE	48	0300-732	4	CLAMP,HOSE,#4
9	0304-900	1	MNT,PLATE,PUMP	49	0304-509	2	HOSE,FUEL,5/16x26"
10	0304-507	1	PLATE,FLYWHEEL	50	0304-549	1	HEATER,BLOCK
11	2010-154	1	ENGINE PERKINS 403D-15	51	0200-312	1	ASSY,TAIPIPE
12	0304-129	1	WLMT,MNT,ENGINE	52	0200-213	1	FILTER,FUEL,PERKINS,404C22
13	0200-562	1	STARTER	53	0301-389	2	CAPSCREW,HH,M10 x 1.50 x 30,ZN
14	0304-503	1	VALVE,DUST	54	0301-781	2	WASHER,SPLIT LOCK,10mm,ZN
15	0304-434	1	FILTER, AIR,PRIMARY,3013	55	0301-780	2	NUT,HEX,10mm x 1.5,ZN
16	0304-435	1	FILTER, AIR,SAFETY,3013	56	8102-132	8	CAPSCREW,HH,5/16-18UNCx1.0 GD8
17	0304-038	1	BAND,MNT,AIR CLEANER	57	0300-546	1	CABLE,GROUND,ENGINE
18	0307-720	3	CAPSCREW,HH,M8x1.25x20	58	0304-127	1	WLMT,MNT,ENGINE
19	8051-242	19	WASHER,SPRING LOCK,5/16,ZN	59	8051-272	10	WASHER,SPRING LOCK,3/8,ZN
20	2010-102	1	WLMT,FILTER,AIR	60	8102-225	4	CAPSCREW,HH,3/8-16 UNCx1.5,GD8
21	8040-426	2	NUT,HEX,NYLOCK,5/16-18 UNC,ZN	61	0304-833	1	HOSE,LINE,FUEL,39"
22	8102-134	2	CAPSCREW,HH,5/16-18UNCx1.25GD8	62	0304-835	1	BULB,PRIMER
23	8050-247	2	WASHER,WROUGHT,5/16,SAE,ZN	63	0304-834	1	HOSE,LINE,FUEL,9"
24	0300-211	4	CAPSCREW,M8 x 1.25 x 25MM LG	64	0403-642	1	PIN CLIP
25	0304-511	1	GASKET,MUFFLER	65	0304-819	1	LATCH,COVER,AIR CLEANER
26	0200-334	1	TAILPIPE,OUTLET	66	0300-211	4	CAPSCREW,M8 x 1.25 x 25MM LG
27	0300-263	1	CLAMP,MUFFLER,2"	67	0304-839	10	WASHER,SPRING LOCK,14MM
28	4010-097	1	MUFFLER	68	8102-222	8	CAPSCREW,HH,3/8-16 UNCx1.0,GD8
29	2010-117	1	BELT,FAN	69	0200-333	1	TAILPIPE,CENTER
30	2045-565	1	JOINT BALL SNAP CLIP	70	0200-335	6	SPRING,TAIPIPE
31	8040-396	1	NUT,HEX,NYLOCK,1/4-28 UNF,ZN	71	0200-332	1	TAILPIPE,W/MTG FLANGE
32	2030-313	1	UNIT SENDING ENGINE TEMP W/DUETSCH	72	0300-980	4	WASHER,1.447 x .406 x .125
33	0304-382	2	CAPSCREW,HH 1/4-20UNCx 8.0 GR8				
34	0304-406	1	BRKT,HOLDOWN,BATTERY				
35	8040-366	2	NUT,HEX,NYLOCK,1/4-20 UNC,ZN				
36	0304-202	1	BATTERY,750CCA,RC				
37	0304-335	2	BOLT,BATTERY,SIDEMOUNT				
38	2010-206	1	WLMT BRKT THROTTLE				
39	0403-641	1	CLEVIS				
40	0300-581	1	W/NUTS,U-BOLT,1/4-20				





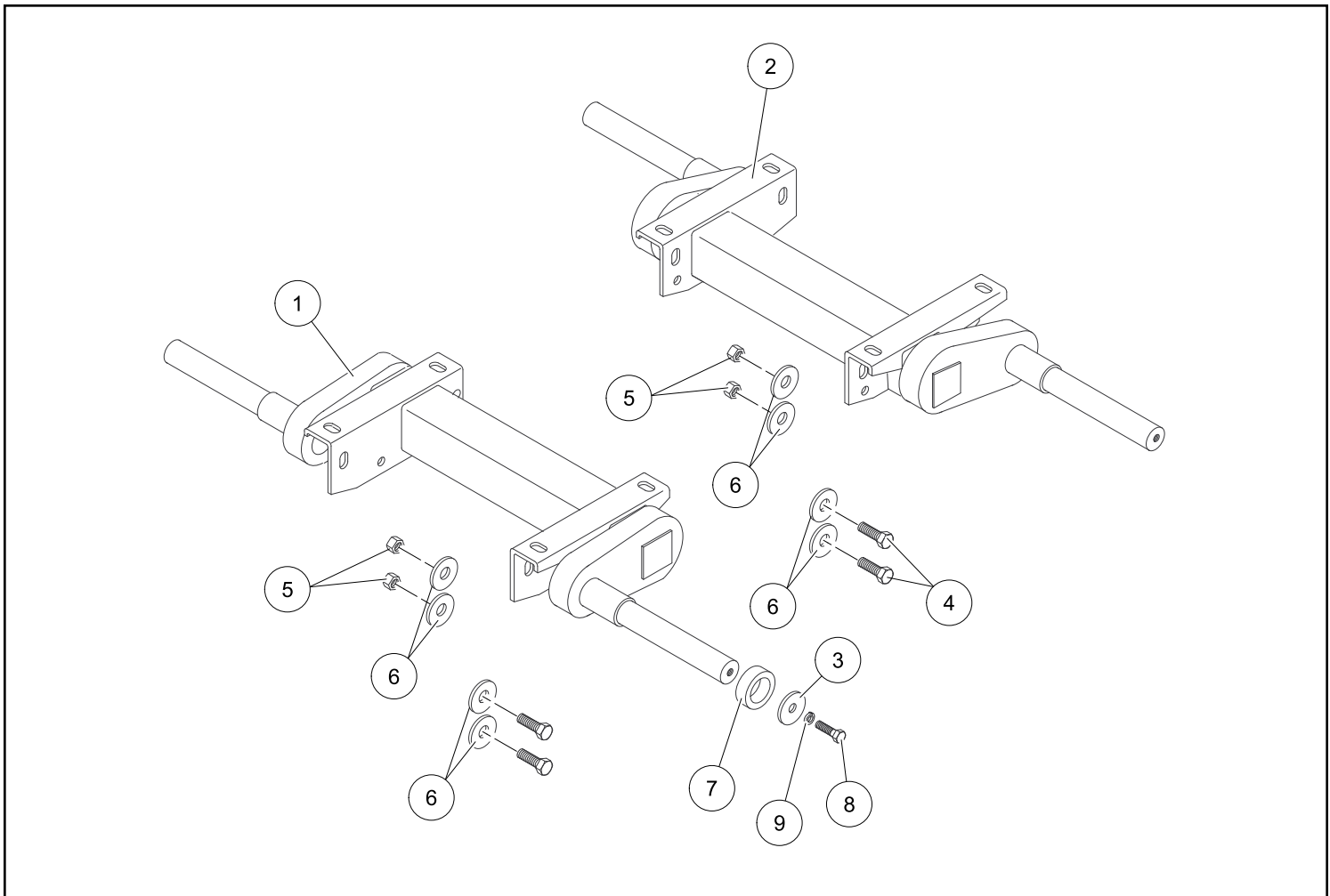
# FUSE PANEL ASSEMBLY (SN: DTA 05001-Current)

REF. NO.	PART NUMBER	QTY.	DESCRIPTION	REF. NO.	PART NUMBER	QTY.	DESCRIPTION
1	-----	1	HARNES MAIN --SEE HARNESSES ON PAGE III				
2	0310-807	2	RELAY,MINI, 35 AMP				
3	0310-804	1	FUSE,MAXI, 60 AMP				
4	0304-519	6	RELAY,PLUG,GLOW				
5	0310-800	2	FUSE,MAXI,20 AMP				
6	0310-803	2	FUSE,MAXI, 50 AMP				
7	0310-802	2	FUSE,MAXI, 40 AMP				
8	0310-794	6	FUSE,MINI, 5 AMP				
9	0310-795	7	FUSE,MINI,10 AMP				
10	0310-796	2	FUSE,MINI,15 AMP				
11	0310-806	4	RELAY,MICRO, 20 AMP				
12	0310-811	1	DIODE, 3 AMP				
13	0200-510	1	RESISTOR,33OHM/3WATT,OHMITE43F				
14	2010-089	1	COVER,PANEL,FUSE,W/DECALS,RC30				
15	0310-797	1	FUSE,MINI,20 AMP				



# TORSION AXLE ASSEMBLY (SN: DTA 05001-05572)

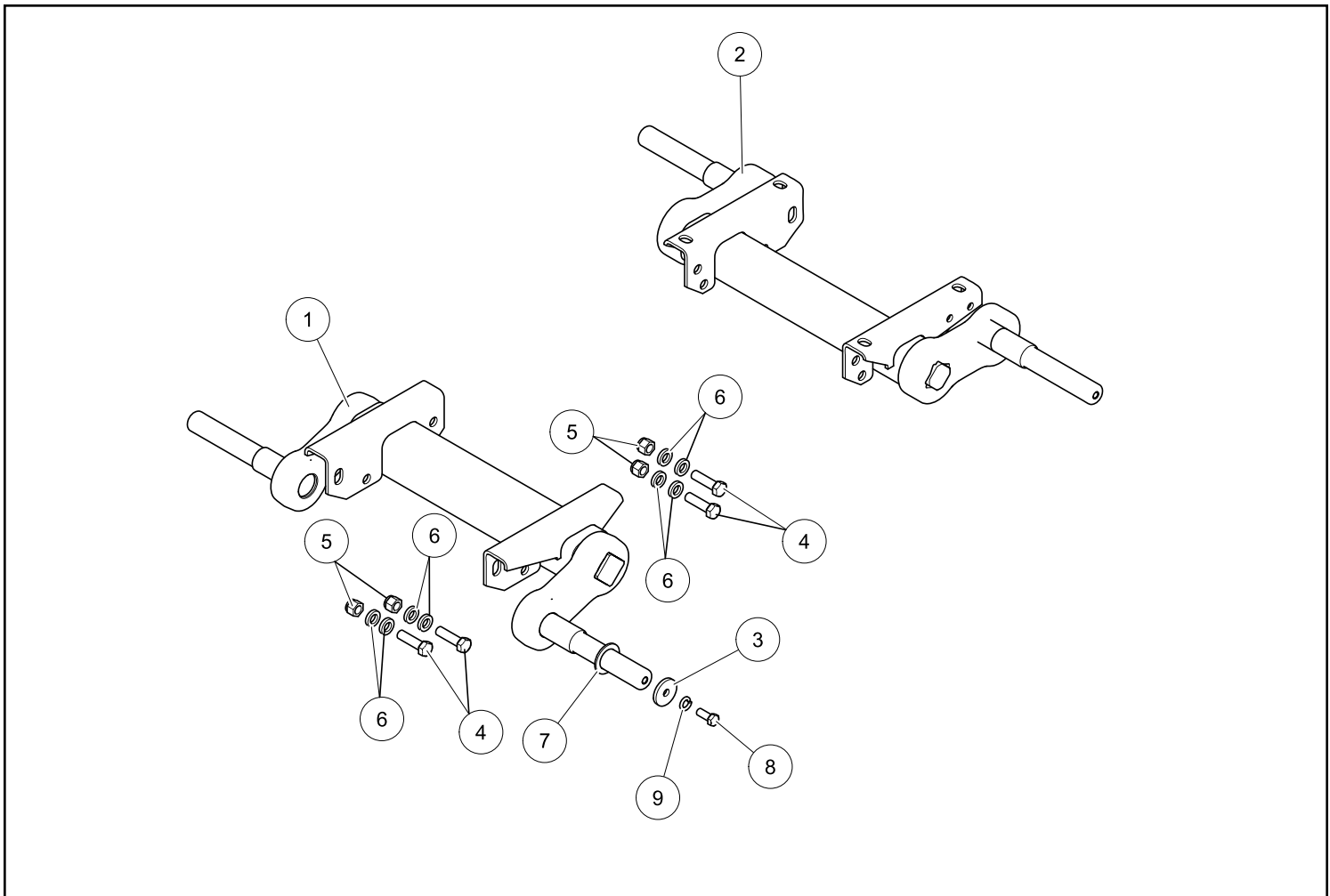
REF. NO.	PART NUMBER	QTY.	DESCRIPTION	REF. NO.	PART NUMBER	QTY.	DESCRIPTION
1	2010-120	1	AXLE,TORSION,FRONT				
2	2010-124	1	AXLE,TORSION,REAR				
3	0304-100	4	WASHER,1/4"THICK				
4	8102-587	16	CAPSCREW,HH 5/8-11UNCx 2.0 GD8,ZN				
5	0402-621	16	NUT,TOP LOCK,STL,5/8-11UNC,ZN				
6	8050-408	32	WASHER,FLAT,5/8,THICK				
7	2010-515	4	SPACER AXLE PT30				
8	8102-404	4	CAPSCREW,HH 1/2-13UNCx1.25 GD8				
9	8051-332	4	WASHER,SPRING LOCK,1/2,ZN				



# TORSION AXLE ASSEMBLY (SN: DTA 05573-Current)

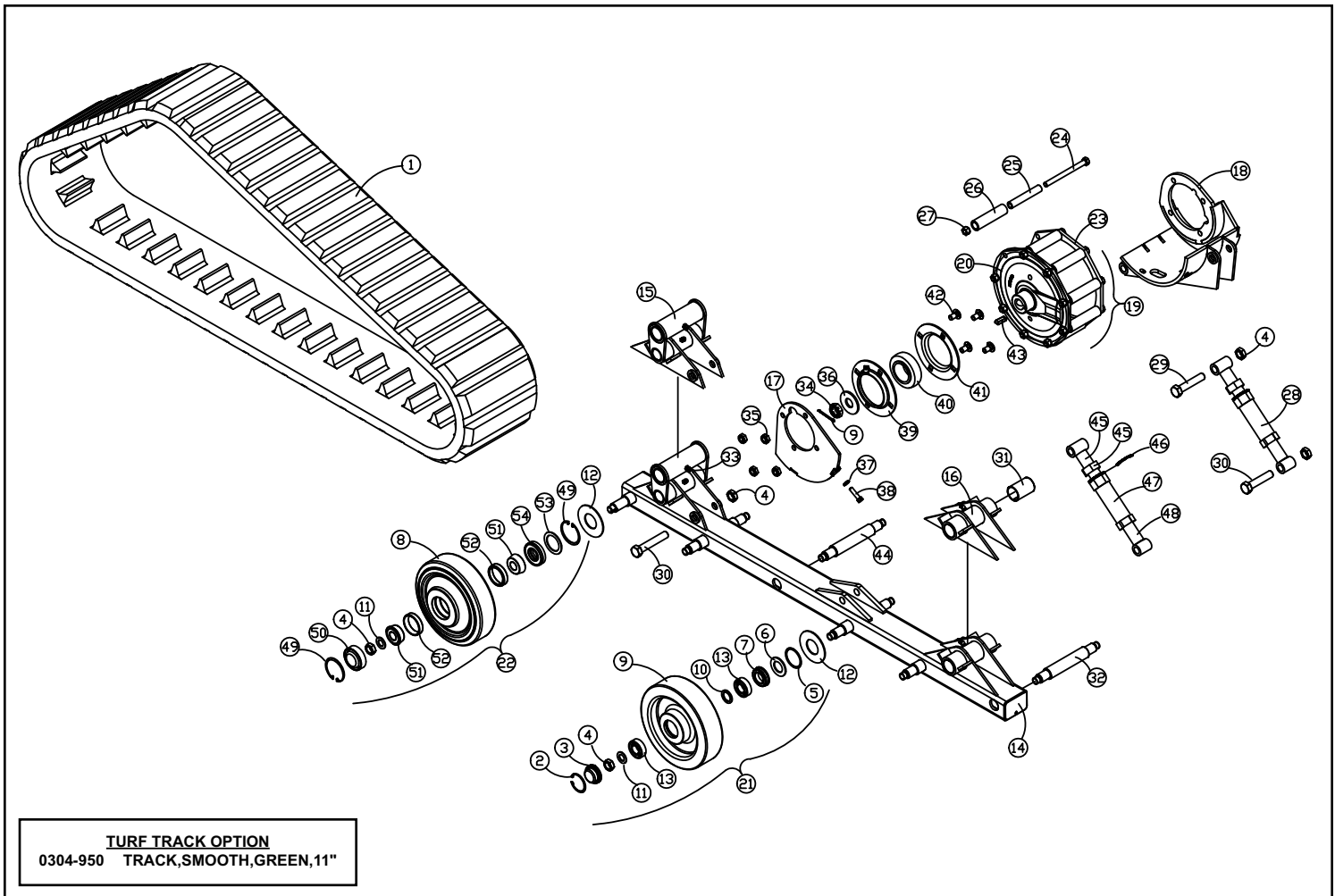
Section 12

REF. NO.	PART NUMBER	QTY.	DESCRIPTION	REF. NO.	PART NUMBER	QTY.	DESCRIPTION
1	2010-671	1	AXLE,TORSION,FRONT				
2	2010-672	1	AXLE,TORSION,REAR				
3	0304-100	4	WASHER,1/4"THICK				
4	8102-587	16	CAPSCREW,HH 5/8-11UNCx 2.0 GD8,ZN				
5	0402-621	16	NUT,TOP LOCK,STL,5/8-11UNC,ZN				
6	0700-287	32	WASHER,16mmX30mmX5mm				
7	2010-669	4	SPACER 1.50 X 2.25 X .134				
8	8102-404	4	CAPSCREW,HH 1/2-13UNCx1.25 GD8				
9	8051-332	4	WASHER,SPRING LOCK,1/2,ZN				



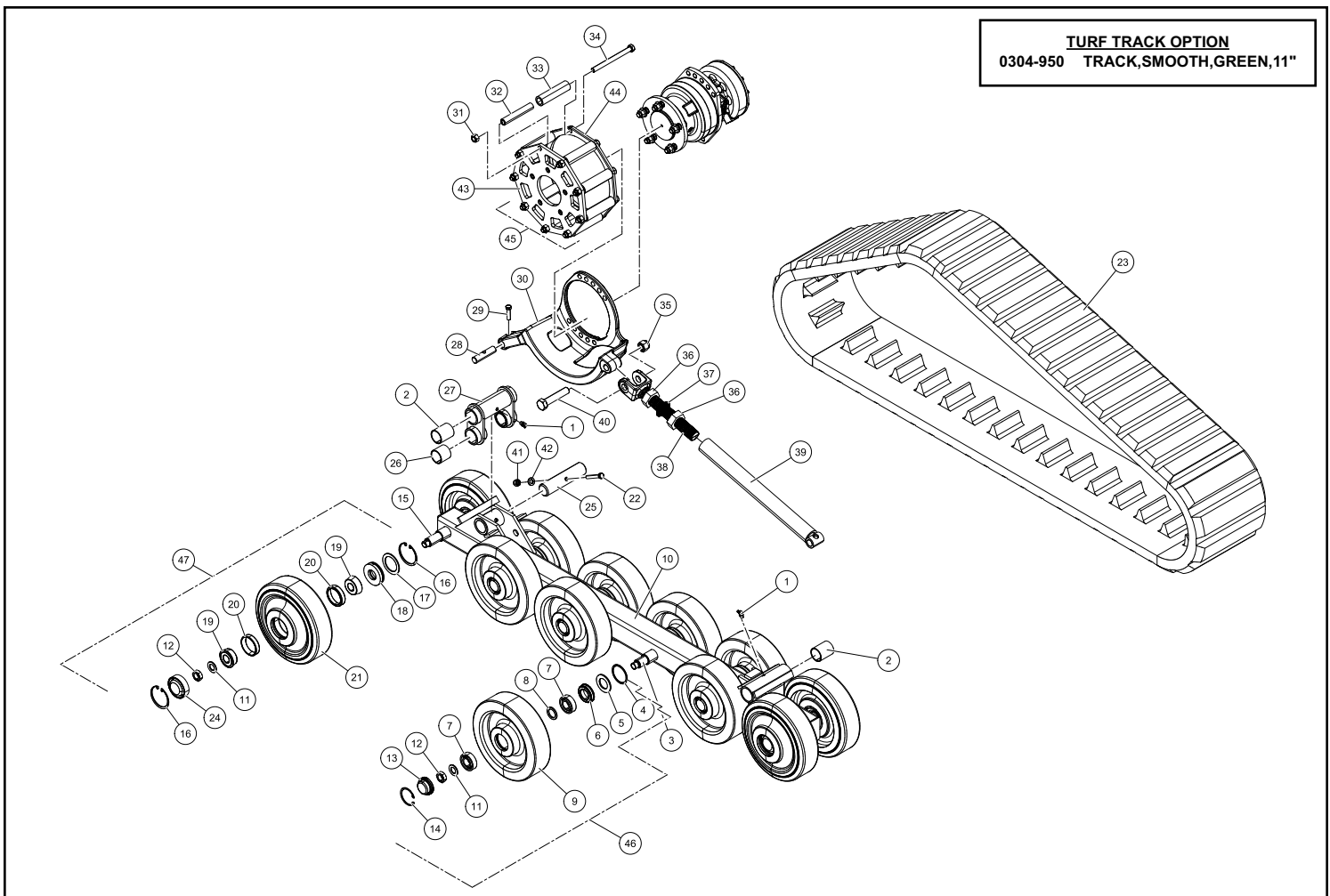
# UNDERCARRIAGE ASSEMBLY RT (SN: DTA 05001-05572)

REF. NO.	PART NUMBER	QTY.	DESCRIPTION	REF. NO.	PART NUMBER	QTY.	DESCRIPTION
1	0304-003	1	TRACK,11"WIDE,PROFILE2	41	2010-246	1	FLANGE BEARING 1.5
2	0304-319	8	RING,SNAP,INNER WHEEL,PLATED	42	8011-402	4	BOLT,CARRIAGE,1/2-13 UNCx1.0,Z
3	2010-142	8	HUB CAP RUBBER BONDED	43	0090-230	1	KEY 1.00 x .375 x .375
4	0304-722	15	NUT,HEX,JAM,LOCKING,3/4-10UNC,	44	2010-238	6	AXLE 1.25 X 9.5
5	0702-114	8	RING,RETAINER,INT	45	2010-047	1	WLMT,THREADED-T,RH
6	0304-117	8	GUARD,BEARING	46	0304-077	1	NUT,HEX,JAM,1 1/4 - 7,RH
7	0303-141	8	SEAL,APY,1.250x2.062x.450	47	2010-045	1	WLMT,TURNBUCKLE
8	0702-200	4	WHEEL,10",W/HUB	48	2010-046	1	WLMT,THREADED-T,LH
9	0304-101	8	WHEEL,10"	49	0702-115	8	RING,SNAP,INT,PLATED
10	0304-097	8	SPACER,BEARING	50	0702-111	4	CAP,WHEEL
11	0090-204	12	WASHER BEARING	51	0702-106	8	BEARING,CONE
12	0304-911	12	WASHER,SPACER	52	0702-105	8	BEARING,CUP
13	0302-591	16	BEARING,BALL,6205 W/O SEALS	53	2010-517	4	WASHER 2.58 x 1.87 x .0897
14	2010-242	1	WLMT RAIL	54	2060-044	4	SEAL 1.25 x 2.635 x .591
15	2010-249	1	WLMT MOUNT REAR SERVICE				
16	2010-248	1	WLMT MOUNT FRONT SERVICE				
17	2010-227	1	WLMT OUTBOARD BEARING				
18	2010-225	1	WLMT TABLE RH				
19	2010-234	1	ASSY SPROCKET 9 TOOTH				
20	2010-223	1	SPROCKET MACHINED				
21	2010-247	8	ASSY PT30 WHEEL SERVICE				
22	2010-525	4	KIT END WHEEL 10" SERVICE				
23	2010-034	1	RING,SPROCKET,10.623				
24	8102-418	9	CAPSCREW,HH,1/2-13UNCx 6.0,GD8				
25	0304-098	9	TOOTH,DRIVE,SPROCKET				
26	0304-806	9	TUBE,SPROCKET				
27	0700-124	9	NUT,TOPLock,1/2-13UNC,ZN,GD8				
28	0304-070	1	TENSIONER,TRACK,RC				
29	0304-408	1	CAPSCREW,HH,3/4-10UNC3.75,GD8				
30	8102-683	2	CAPSCREW,HH,3/4-10UNCx3.5 GD 8				
31	2010-065	4	BUSHING,DU,1.50X1.66X2.00				
32	0702-145	2	AXLE,MACHINED,10.32				
33	0304-427	3	FITTING,GREASE,1/8 NPT x 45°				
34	0090-229	1	NUT CASTLE 1.0-20 UNEF				
35	8041-606	4	NUT,HEX,NYLOCK,1/2-13 UNC,THIN				
36	2010-224	1	WASHER 180x 2.688 x 1.060				
37	0090-104	2	WASHER .402 x .728 x .098 HARD				
38	8102-225	2	CAPSCREW,HH,3/8-16 UNCx1.5,GD8,ZN				
39	2010-245	1	FLANGE W/ZERK				
40	2010-244	1	ASSY BEARING				



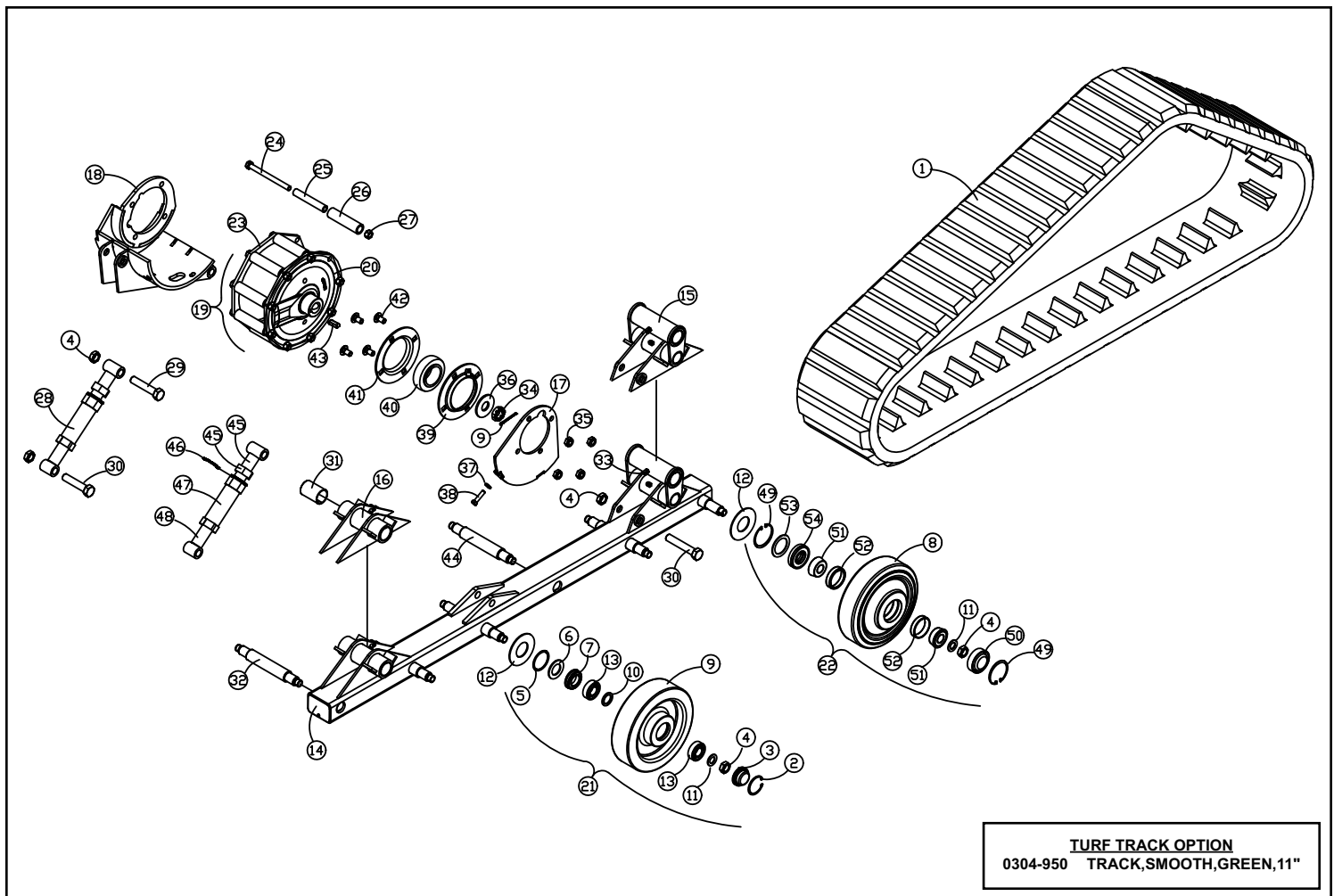
# UNDERCARRIAGE ASSEMBLY RT (SN: DTA 05573-Current)

REF. NO.	PART NUMBER	QTY.	DESCRIPTION	REF. NO.	PART NUMBER	QTY.	DESCRIPTION
1	0304-427	2	FITTING, GREASE, 1/8 NPT x 45"	41	8042-490	1	NUT, HEX, 3/8-16 UNC, GD8
2	2010-065	4	BUSHING, DU, 1.50X1.66X2.00	42	0090-104	1	WASHER .402 x .728 x .098 HARD
3	2010-238	4	AXLE 1.25 X 9.5	43	2010-569	1	RING SPROCKET 10.623
4	0702-114	8	RING, RETAINER, INT	44	2010-034	1	RING, SPROCKET, 10.623
5	0304-117	8	GUARD, BEARING	45	2010-783	1	ASSEMBLY, DRIVE SPROCKET, SERVICE
6	0303-141	8	SEAL, APY, 1.250x2.062x.450	46	2010-247	8	ASSY PT30 WHEEL SERVICE
7	0302-591	16	BEARING, BALL, 6205 W/O SEALS	47	2010-525	4	KIT END WHEEL 10" SERVICE
8	0304-097	8	SPACER, BEARING 1.0 ID X1.5 OD X 1/8 THI				
9	0304-101	8	WHEEL, 10"				
10	2010-572	1	WELDMENT RAIL PT30				
11	0090-204	12	WASHER BEARING				
12	0304-722	12	NUT, HEX, JAM, LOCKING, 3/4-10UNC				
13	2010-142	8	HUB CAP RUBBER BONDED				
14	0304-319	8	RING, SNAP, INNER WHEEL, PLATED				
15	0702-145	2	AXLE, MACHINED, 10.32				
16	0702-115	8	RING, SNAP, INT, PLATED				
17	2010-517	4	WASHER 2.58 x 1.87 x .0897				
18	2060-044	4	SEAL 1.25 x 2.635 x .591				
19	0702-106	8	BEARING, CONE				
20	0702-105	8	BEARING, CUP				
21	0702-200	4	WHEEL, 10", W/HUB				
22	8102-229	1	CAPSCREW, HH 3/8-16UNCx2.5, GD8				
23	0304-003	1	TRACK, 11" WIDE, PROFILE 2				
24	0702-111	4	CAP, WHEEL				
25	2010-579	1	SHAFT SWING JOINT				
26	2010-593	2	BUSHING DU 1.50 x 1.66 x 1.50				
27	2010-582	1	WELDMENT REAR PIVOT JOINT				
28	2035-308	1	PIN, TENSIONER, THREADED				
29	8102-225	1	CAPSCREW, HH, 3/8-16 UNCx1.5, GD8, ZN				
30	2010-522	1	TABLE CAST MOTOR MACHINED RH				
31	0700-124	9	NUT, TOPLOCK, 1/2-13UNC, ZN, GD8				
32	0304-098	9	TOOTH, DRIVE, SPROCKET				
33	0304-806	9	TUBE, SPROCKET				
34	8102-418	9	CAPSCREW, HH, 1/2-13UNCx 6.0, GD8, ZN				
35	8040-786	1	NUT, HEX, NYLOCK, 3/4-10 UNC, ZN				
36	0090-317	2	NUT HEX 1.25-7 UNC JAM ZINC				
37	0090-262	1	WASHER SAFETY S33-1.25"				
38	2035-448	1	CLEVIS END TENSIONER MACHINED				
39	2010-583	1	WELDMENT LOWER TENSIONER				
40	0304-408	1	CAPSCREW, HH, 3/4-10UNC3.75, GD8				



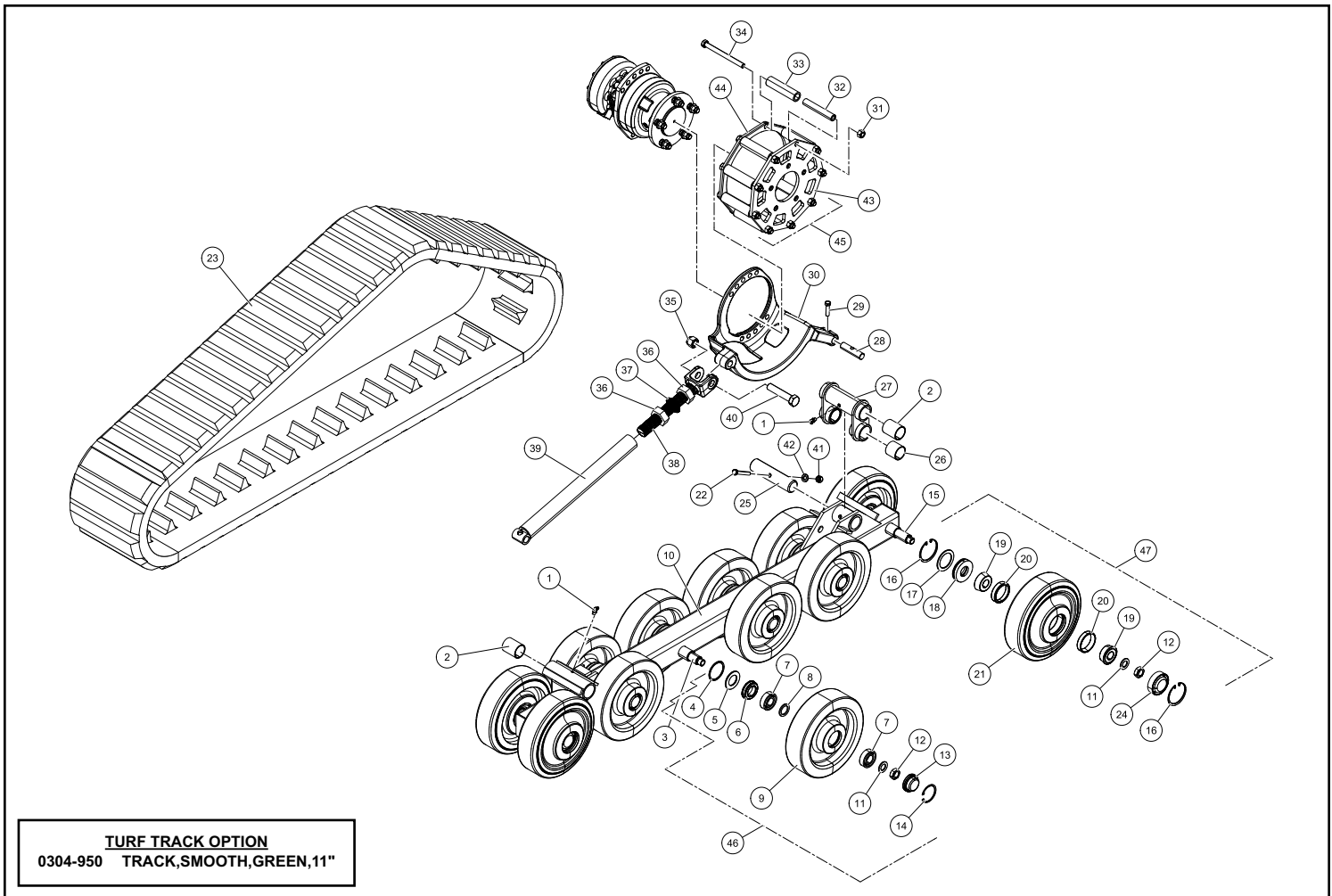
# UNDERCARRIAGE ASSEMBLY LT (SN: DTA 05001-05572)

REF. NO.	PART NUMBER	QTY.	DESCRIPTION	REF. NO.	PART NUMBER	QTY.	DESCRIPTION
1	0304-003	1	TRACK,11"WIDE,PROFILE2	41	2010-246	1	FLANGE BEARING 1.5
2	0304-319	8	RING,SNAP,INNER WHEEL,PLATED	42	8011-402	4	BOLT,CARRIAGE,1/2-13 UNCx1.0,Z
3	2010-142	8	HUB CAP RUBBER BONDED	43	0090-230	1	KEY 1.00 x .375 x .375
4	0304-722	15	NUT,HEX,JAM,LOCKING,3/4-10UNC,	44	2010-238	6	AXLE 1.25 X 9.5
5	0702-114	8	RING,RETAINER,INT	45	2010-047	1	WLMT,THREADED-T,RH
6	0304-117	8	GUARD,BEARING	46	0304-077	1	NUT,HEX,JAM,1 1/4 - 7,RH
7	0303-141	8	SEAL,APY,1.250x2.062x.450	47	2010-045	1	WLMT,TURNBUCKLE
8	0702-200	4	WHEEL,10",W/HUB	48	2010-046	1	WLMT,THREADED-T,LH
9	0304-101	8	WHEEL,10"	49	0702-115	8	RING,SNAP,INT,PLATED
10	0304-097	8	SPACER,BEARING	50	0702-111	4	CAP,WHEEL
11	0090-204	12	WASHER BEARING	51	0702-106	8	BEARING,CONE
12	0304-911	12	WASHER,SPACER	52	0702-105	8	BEARING,CUP
13	0302-591	16	BEARING,BALL,6205 W/O SEALS	53	2010-517	4	WASHER 2.58 x 1.87 x .0897
14	2010-242	1	WLMT RAIL	54	2060-044	4	SEAL 1.25 x 2.635 x .591
15	2010-249	1	WLMT MOUNT REAR SERVICE				
16	2010-248	1	WLMT MOUNT FRONT SERVICE				
17	2010-227	1	WLMT OUTBOARD BEARING				
18	2010-233	1	WLMT TABLE LH				
19	2010-234	1	ASSY SPROCKET 9 TOOTH				
20	2010-223	1	SPROCKET MACHINED				
21	2010-247	8	ASSY PT30 WHEEL SERVICE				
22	2010-525	4	KIT END WHEEL 10" SERVICE				
23	2010-034	1	RING,SPROCKET,10.623				
24	8102-418	9	CAPSCREW,HH,1/2-13UNCx 6.0,GD8				
25	0304-098	9	TOOTH,DRIVE,SPROCKET				
26	0304-806	9	TUBE,SPROCKET				
27	0700-124	9	NUT,TOPLock,1/2-13UNC,ZN,GD8				
28	0304-070	1	TENSIONER,TRACK,RC				
29	0304-408	1	CAPSCREW,HH,3/4-10UNC3.75,GD8				
30	8102-683	2	CAPSCREW,HH,3/4-10UNCx3.5 GD 8				
31	2010-065	4	BUSHING,DU,1.50X1.66X2.00				
32	0702-145	2	AXLE,MACHINED,10.32				
33	0304-427	3	FITTING,GREASE,1/8 NPT x 45°				
34	0090-229	1	NUT CASTLE 1.0-20 UNEF				
35	8041-606	4	NUT,HEX,NYLOCK,1/2-13 UNC,THIN				
36	2010-224	1	WASHER 180x 2.688 x 1.060				
37	0090-104	2	WASHER .402 x .728 x .098 HARD				
38	8102-225	2	CAPSCREW,HH,3/8-16 UNCx1.5,GD8,ZN				
39	2010-245	1	FLANGE W/ZERK				
40	2010-244	1	ASSY BEARING				



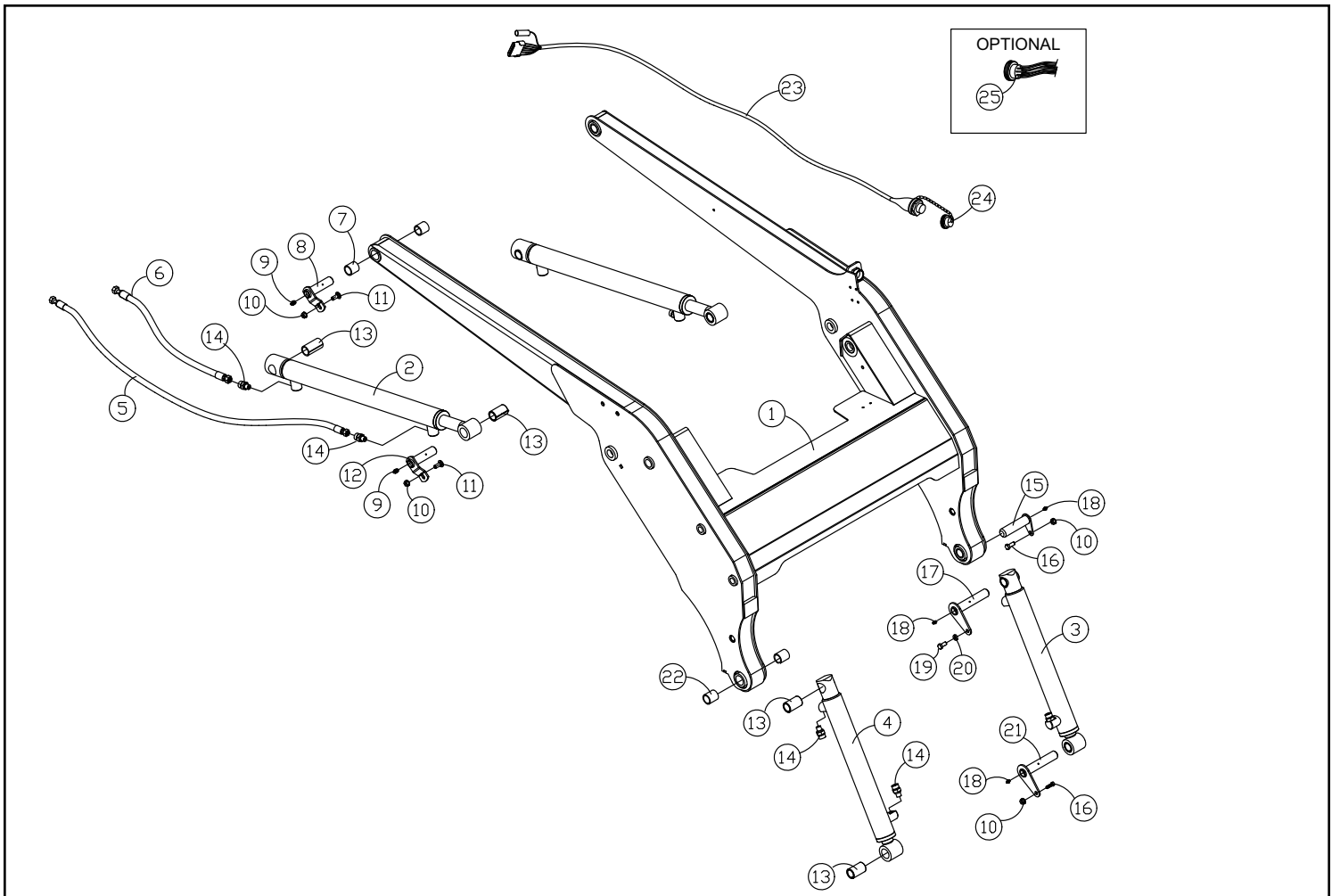
# UNDERCARRIAGE ASSEMBLY LT (SN: DTA 05573-Current)

REF. NO.	PART NUMBER	QTY.	DESCRIPTION	REF. NO.	PART NUMBER	QTY.	DESCRIPTION
1	0304-427	2	FITTING,GREASE,1/8 NPT x 45^	41	8042-490	1	NUT,HEX,3/8-16 UNC,GD8
2	2010-065	4	BUSHING,DU,1.50X1.66X2.00	42	0090-104	1	WASHER .402 x .728 x .098 HARD
3	2010-238	4	AXLE 1.25 X 9.5	43	2010-569	1	RING SPROCKET 10.623
4	0702-114	8	RING,RETAINER,INT	44	2010-034	1	RING,SPROCKET,10.623
5	0304-117	8	GUARD,BEARING	45	2010-783	1	ASSEMBLY, DRIVE SPROCKET, SERVICE
6	0303-141	8	SEAL,APY,1.250x2.062x.450	46	2010-247	8	ASSY PT30 WHEEL SERVICE
7	0302-591	16	BEARING,BALL,6205 W/O SEALS	47	2010-525	4	KIT END WHEEL 10" SERVICE
8	0304-097	8	SPACER,BEARING 1.0 ID X1.5 OD X 1/8 THI				
9	0304-101	8	WHEEL,10"				
10	2010-572	1	WELDMENT RAIL PT30				
11	0090-204	12	WASHER BEARING				
12	0304-722	12	NUT,HEX,JAM,LOCKING,3/4-10UNC				
13	2010-142	8	HUB CAP RUBBER BONDED				
14	0304-319	8	RING,SNAP,INNER WHEEL,PLATED				
15	0702-145	2	AXLE,MACHINED,10.32				
16	0702-115	8	RING,SNAP,INT,PLATED				
17	2010-517	4	WASHER 2.58 x 1.87 x .0897				
18	2060-044	4	SEAL 1.25 x 2.635 x .591				
19	0702-106	8	BEARING,CONE				
20	0702-105	8	BEARING,CUP				
21	0702-200	4	WHEEL,10",W/HUB				
22	8102-229	1	CAPSCREW,HH 3/8-16UNCx2.5,GD8				
23	0304-003	1	TRACK,11"WIDE,PROFILE2				
24	0702-111	4	CAP,WHEEL				
25	2010-579	1	SHAFT SWING JOINT				
26	2010-593	2	BUSHING DU 1.50 x 1.66 x 1.50				
27	2010-582	1	WELDMENT REAR PIVOT JOINT				
28	2035-308	1	PIN,TENSIONER,THREADED				
29	8102-225	1	CAPSCREW,HH,3/8-16 UNCx1.5,GD8,ZN				
30	2010-587	1	TABLE CAST MOTOR MACHINED LH				
31	0700-124	9	NUT,TOPLock,1/2-13UNC,ZN,GD8				
32	0304-098	9	TOOTH,DRIVE,SPROCKET				
33	0304-806	9	TUBE,SPROCKET				
34	8102-418	9	CAPSCREW,HH,1/2-13UNCx 6.0,GD8,ZN				
35	8040-786	1	NUT,HEX,NYLOCK,3/4-10 UNC,ZN				
36	0090-317	2	NUT HEX 1.25-7 UNC JAM ZINC				
37	0090-262	1	WASHER SAFETY S33-1.25"				
38	2035-448	1	CLEVIS END TENSIONER MACHINED				
39	2010-583	1	WELDMENT LOWER TENSIONER				
40	0304-408	1	CAPSCREW,HH,3/4-10UNC3.75,GD8.				



# LIFT ARM ASSEMBLY (SN: DTA 05001-Current)

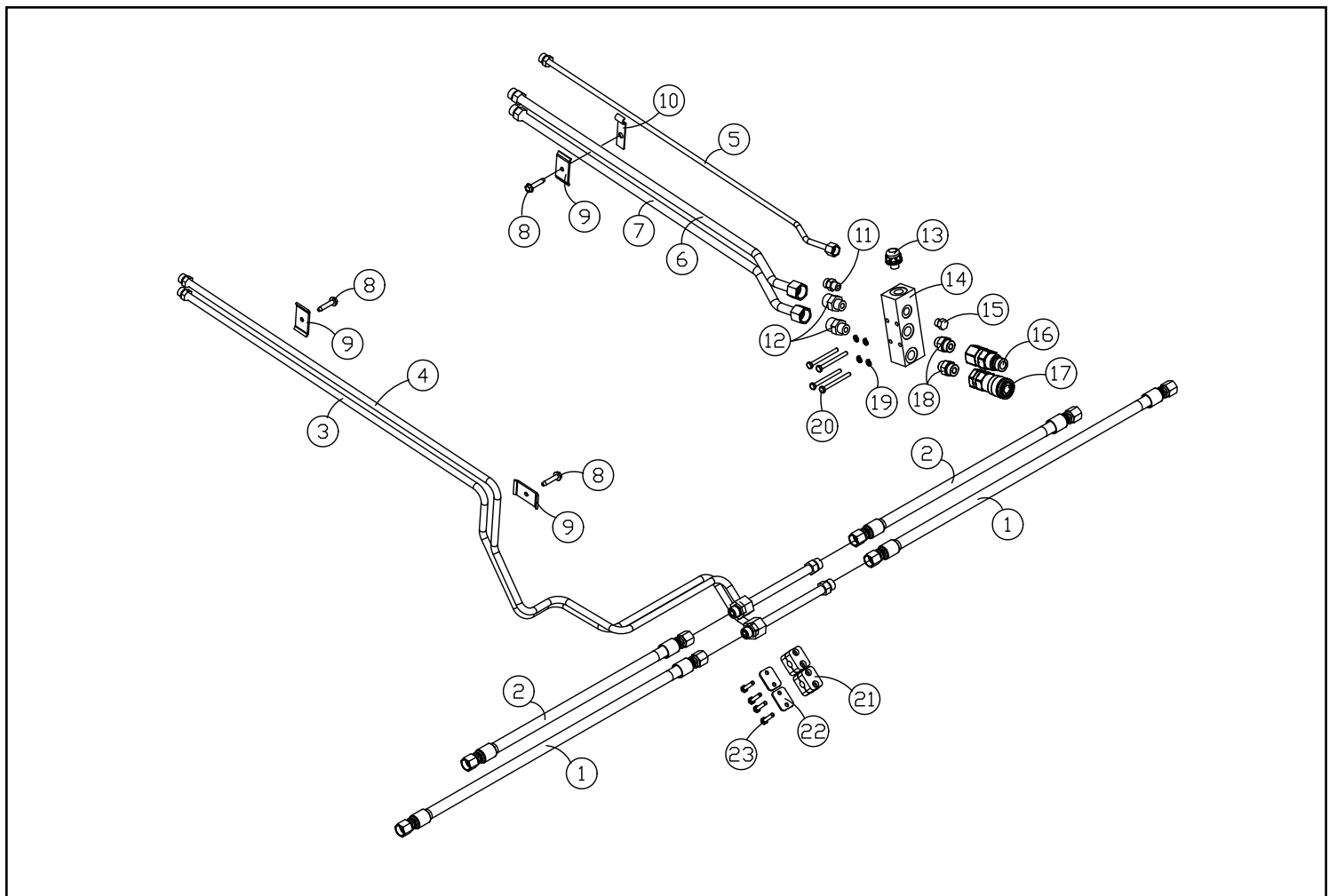
REF. NO.	PART NUMBER	QTY.	DESCRIPTION	REF. NO.	PART NUMBER	QTY.	DESCRIPTION
1	2010-300	1	WLMT LOADER				
2	2010-276	2	CYLINDER BOOM				
3	2010-275	1	CYLINDER TILT LH				
4	2010-274	1	CYLINDER TILT RH				
5	2045-495	2	HOSE,6M4K,38.5"				
6	2010-430	2	HOSE -6 4000PSI 06FFOR 06FFOR 21.5"				
7	2010-272	4	BUSHING, LOADER, TOWER				
8	2010-147	2	WLMT PIN BIG				
9	0300-946	4	FITTING,GREASE,1/8 NPT				
10	0314-269	8	NUT,FLANGE,TOPLK,3/8-16UNC,GDG,ZN				
11	8011-222	4	BOLT,CARRIAGE,3/8-16 UNCx1.0,Z				
12	2010-146	2	WLMT PIN				
13	2010-554	8	BUSHING,LIFT ARM/TILT CYLINDER				
14	0310-567	8	ADAPTER,8MFFOR-6MB				
15	2010-285	2	PIN LOADER WLMT				
16	8011-222	4	BOLT,CARRIAGE,3/8-16 UNCx1.0,ZN				
17	2030-328	2	WLMT PIN BUCKET				
18	0300-607	6	ZERK,GREASE,1/4-28 1103K21				
19	8102-219	2	CAPSCREW,HH 3/8-16x 1/2 GD 8				
20	8051-272	2	WASHER,SPRING LOCK,3/8,ZN				
21	2010-278	2	PIN QA WLMT				
22	2010-273	4	BUSHING, LOADER, QA				
23	2010-689	1	HARNESSES AUX PWR ACT				
24	0201-770	1	CAP,W/CHAIN 82-00840				
25	0201-771	1	HARNESSES,ELEC,AUX,RC100/85/60				





# LIFT ARM TUBES AND FITTINGS (SN: DTA 05001-Current)

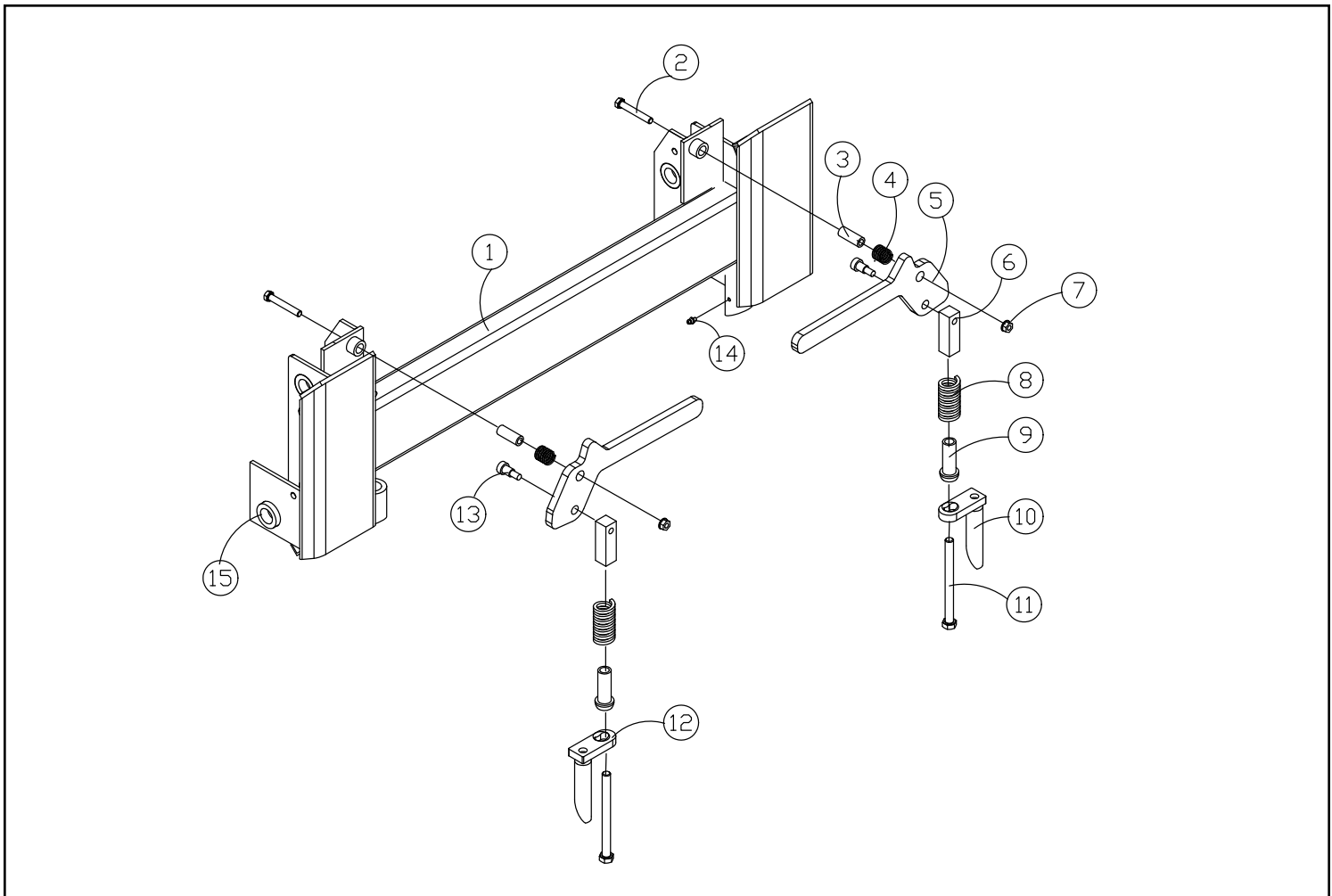
REF. NO.	PART NUMBER	QTY.	DESCRIPTION	REF. NO.	PART NUMBER	QTY.	DESCRIPTION
1	0201-488	2	HOSE,8M4K-8FFORX-8FFORX-23.5"				
2	2010-565	2	HOSE -8 4000PSI 8FFORX 8FFORX 15				
3	2010-423	1	ASSY TUBE LOADER TILT BTM A				
4	2010-422	1	ASSY TUBE LOADER TILT TOP				
5	2010-409	1	ASSY TUBE CASE DRAIN				
6	2010-410	1	ASSY TUBE AUX TOP				
7	2010-411	1	ASSY TUBE AUX BOTTOM				
8	8102-135	3	CAPSCREW,HH,5/16-18X1.50ZN,GD8				
9	0310-584	3	PLATE,COVER TCP-T2 TCP-T2				
10	0304-340	1	CLAMP,OIL LINE,LOADER RC-30 48357 H				
11	0310-329	1	ADAPTER,6MFFOR-6MB				
12	0201-658	2	ADAPTER,10MFFOR-8MB-SV				
13	0304-614	1	VALVE,RELIEF,LOW FLOW,AUX				
14	0304-876	1	MANIFOLD,AUX,HYD				
15	0304-188	1	PLUG,6 ORING,HH				
16	0310-077	1	COUPLER,QUICK,FF,MALE				
17	0310-076	1	COUPLER,QUICK,FF				
18	0200-296	2	ADAPTER,O-RING HEX NIPPLE,10-8				
19	8051-212	4	WASHER,SPRING LOCK,1/4,ZN				
20	8102-049	4	CAPSCREW,HH 1/4-20 x 2.50 GD8				
21	0201-402	2	CLAMP,SET,2050-PP				
22	0201-224	2	COVER,CLAMP,COP-2				
23	8102-044	4	CAPSCREW,HH,1/4-20UNCx1.25,GD8,ZN				



# QUICK ATTACH ASSEMBLY (SN: DTA 05001-Current)

Section 17

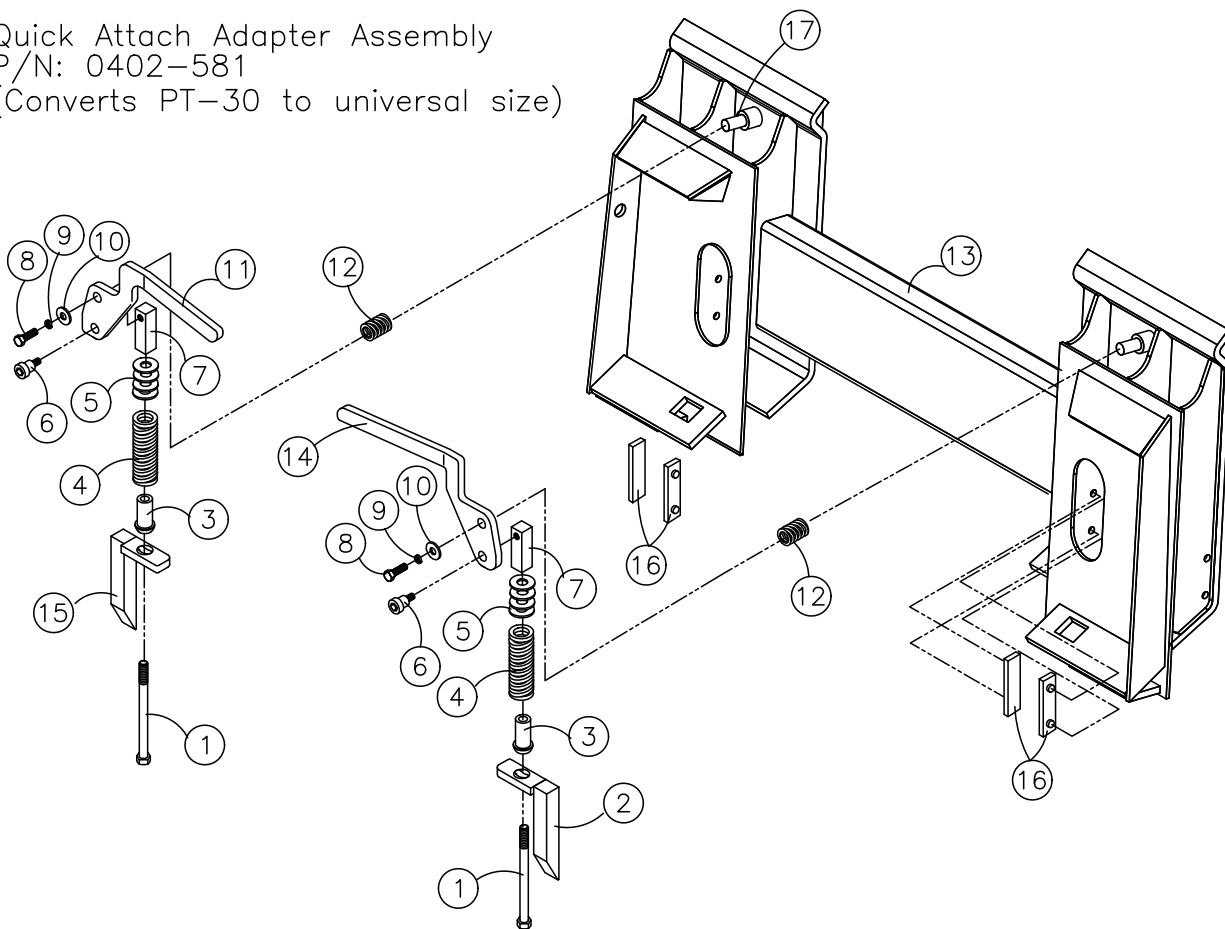
REF. NO.	PART NUMBER	QTY.	DESCRIPTION	REF. NO.	PART NUMBER	QTY.	DESCRIPTION
1	2010-527	1	WLMT QUICK ATTACH				
2	8102-229	2	CAPSCREW,HH 3/8-16UNCx2.5,GD8				
3	2010-538	2	TUBE LATCH				
4	0400-652	2	SPRING,COMPRESSION,.88 x .88 x .091				
5	2010-444	2	HANDLE QUICK ATTACH				
6	0400-617	2	BLOCK,LATCH				
7	8040-486	2	NUT,HEX,NYLOCK,3/8-16 UNC,ZN				
8	0400-651	2	SPRING,COMPRESSION PLATED				
9	0400-621	2	SPOOL,PIVOT				
10	2010-412	1	PIN QA WLMT LH				
11	8102-418	2	CAPSCREW,HH,1/2-13UNCx 6.0,GD8,ZN				
12	2010-413	1	PIN QA WLMT RH				
13	0400-653	2	CAPSCREW,SHOULDER,.5 x.63x3/8-				
14	0300-607	2	ZERK,GREASE,1/4-28				
15	2010-526	8	PIN BOSS				



QUICK ATTACH ADAPTER (SN: DTA 05001-Current)

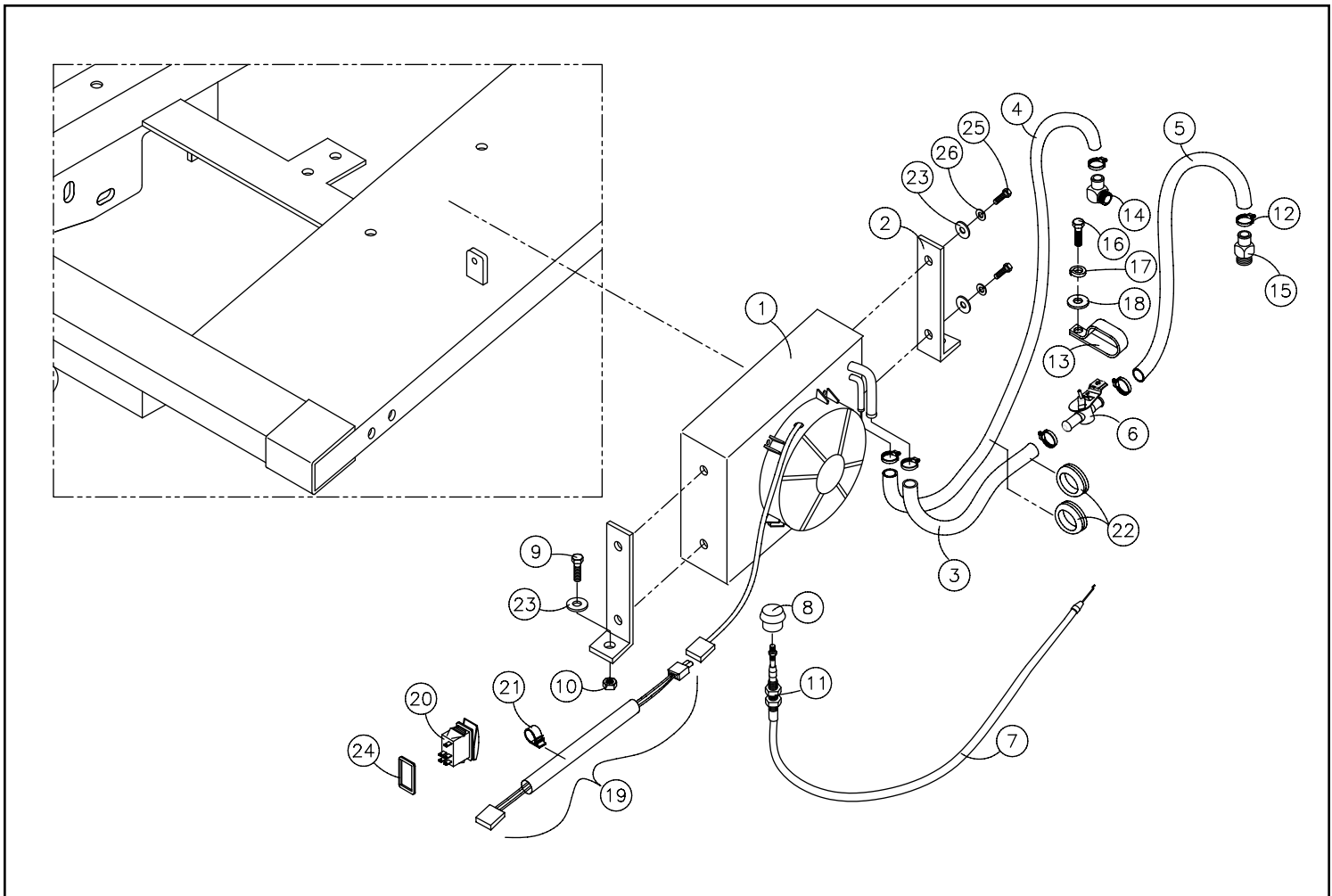
REF. NO.	PART NUMBER	QTY.	DESCRIPTION	REF. NO.	PART NUMBER	QTY.	DESCRIPTION
1	8102-418	2	CAPSCREW,HH,1/2-13UNCx 6.0,GD8				
2	0400-676	1	WLMT,PIN,LATCH,RH				
3	0400-621	2	SPOOL,PIVOT				
4	0400-651	2	SPRING,COMPRESSION				
5	8050-347	8	WASHER,WROUGHT,1/2,STD,ZN				
6	0400-653	2	CAPSCREW,SHOULDER,.5 x.63x3/8-				
7	0400-617	2	BLOCK,LATCH				
8	8102-222	2	CAPSCREW,HH,3/8-16 UNCx1.0,GD8				
9	8051-272	2	WASHER,SPRING LOCK,3/8,ZN				
10	8050-262	2	WASHER,WROUGHT,5/16,STD,ZN				
11	0400-697	1	LEVER,LATCH,LH				
12	0400-652	2	SPRING,COMPRESSION,.88 x .88 x				
13	0304-941	1	CONVERTER,QUICK ATTACH,RC30				
14	0400-698	1	LEVER,LATCH,RH				
15	0400-620	1	WLMT,PIN,LATCH,LH				
16	0400-634	4	SLIDE,PLASTIC,QUICK-ATTACH				
17	0400-629	2	STAND-OFF,LEVER,LATCH				

Quick Attach Adapter Assembly  
P/N: 0402-581  
(Converts PT-30 to universal size)



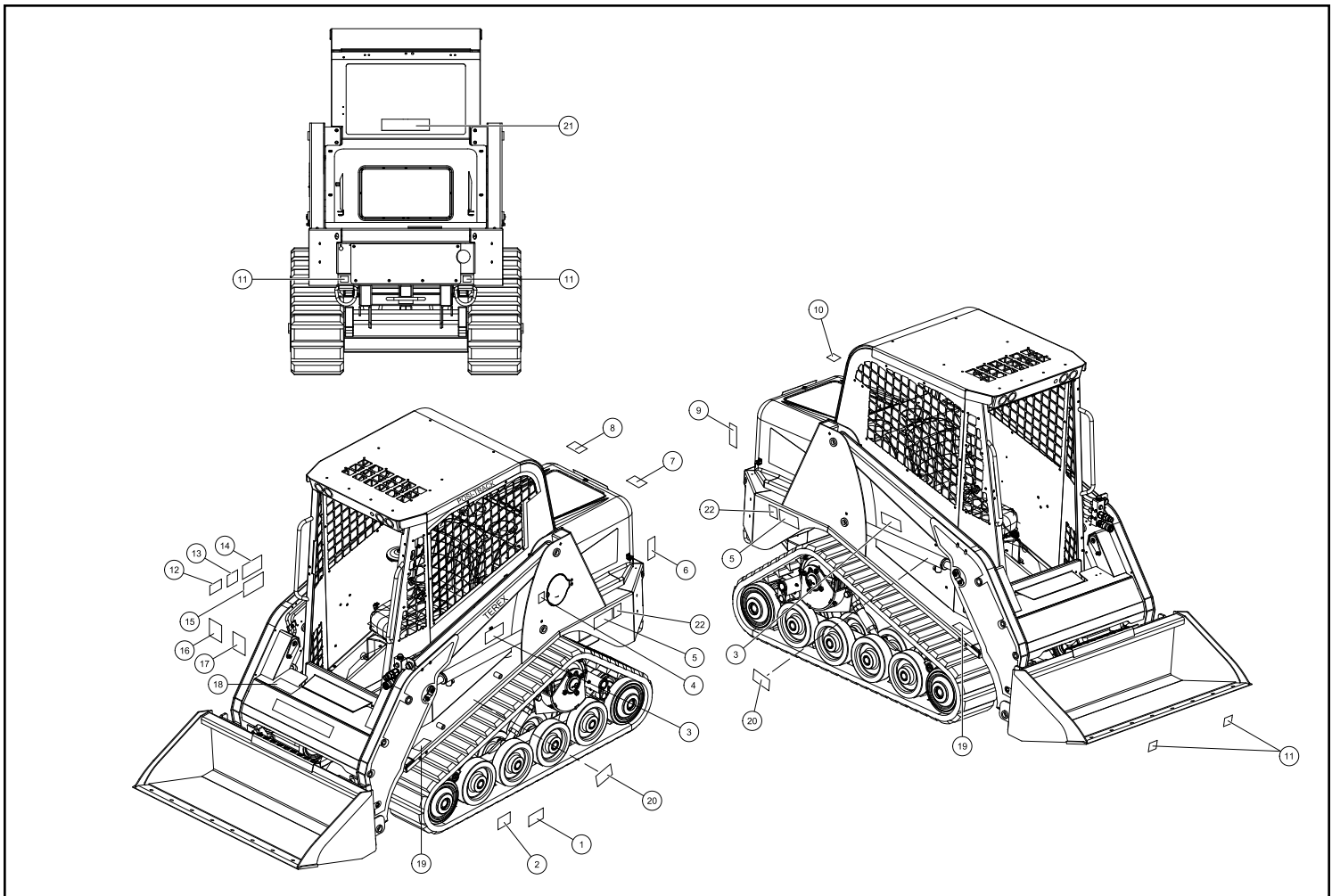
# CAB HEATER ASSEMBLY (SN: DTA 05001-Current)

REF. NO.	PART NUMBER	QTY.	DESCRIPTION	REF. NO.	PART NUMBER	QTY.	DESCRIPTION
1	0304-546	1	HEATER,CAB, RC-30				
2	0304-548	2	MNT,HEATER				
3	0305-214	1	HOSE,HEATER,5/8 x 33"				
4	0304-553	1	HOSE,HEATER,5/8,72"				
5	0304-554	1	HOSE,HEATER,5/8,38"				
6	0301-558	1	VALVE,FLOW,HEATER				
7	0401-975	1	CABLE,PUSH-PULL,HEATER				
8	0301-514	1	KNOB,SWITCH,HEATER				
9	8102-038	2	CAPSCREW,HH 1/4-20UNCx7/8 GRD8				
10	8040-366	2	NUT,HEX,NYLOCK,1/4-20 UNC,ZN				
11	0301-654	1	NUT,JAM,3/8-24 UNF				
12	0301-110	6	CLAMP,HOSE,#8				
13	0310-838	1	CLAMP,TUBE,DOUBLE,1.0				
14	0304-670	1	ADAPTER,5/8BARB-3/8MPT-90^				
15	0304-570	1	ADAPTER,6MP-10HOSE,BARB				
16	0307-720	1	CAPSCREW,HH,M8x1.25x20				
17	8051-242	1	WASHER,SPRING LOCK,5/16,ZN				
18	8050-277	1	WASHER,WROUGHT,3/8,SAE,ZN				
19	0304-575	1	HARNES,HEATER				
20	0304-122	1	SWITCH,ON/OFF,HEATER				
21	0310-587	4	CLAMP,WIRE,3/8,ADHESIVE				
22	2045-748	2	GROMMET,RUBBER,1-3/8"				
23	8050-222	6	WASHER,WROUGHT,1/4,STD,ZN				
24	0310-713	1	GASKET, SWITCH				
25	8102-039	4	CAPSCREW,HH,1/4-20UNCx.625,GD8				
26	8051-212	4	WASHER,SPRING LOCK,1/4,ZN				



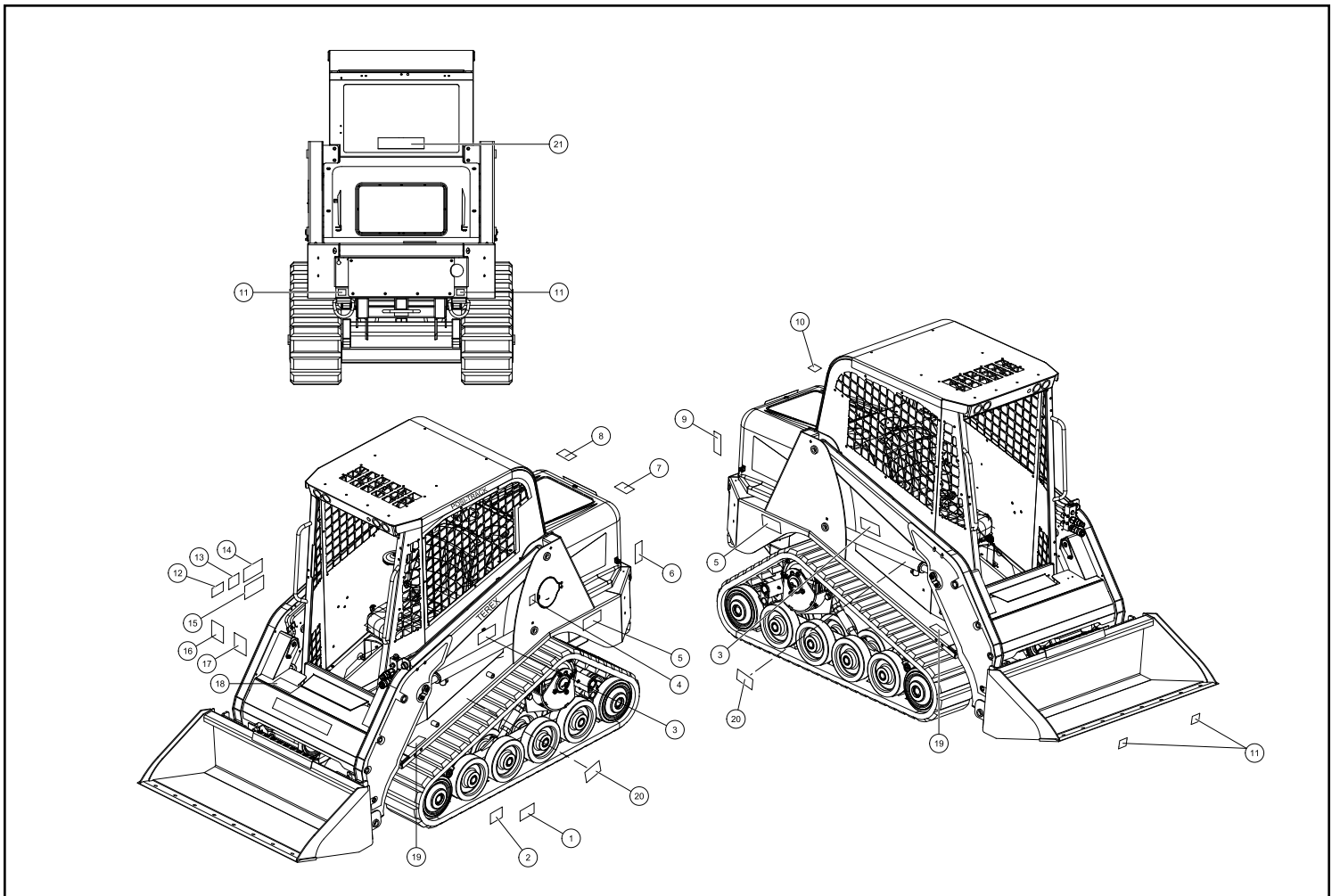
# SAFETY DECALS US (ANSI) (SN: DTA 05001-Current)

REF. NO.	PART NUMBER	QTY.	DESCRIPTION	REF. NO.	PART NUMBER	QTY.	DESCRIPTION
1	0304-320	1	DECAL MANUAL BOX				
2	2030-599	1	DECAL ANSI FIRE HAZARD (BRUSHCUTTING)				
3	2030-602	2	DECAL ANSI SKIN INJECTION HAZARD				
4	4046-078	1	DECAL DIESEL FUEL ONLY				
5	2030-593	2	DECAL ANSI RUN OVER HAZARD				
6	2030-603	1	DECAL ANSI BATTERY EXPLOSION HAZARD				
7	2030-595	1	DECAL ANSI RADIATOR HAZARD				
8	2030-600	1	DECAL ANSI BELT FAN HAZARD				
9	2030-601	1	DECAL ANSI HOT SURFACES HAZARD				
10	4046-079	1	DECAL CE HYDRAULIC OIL ONLY				
11	0310-197	4	DECAL, TIE DOWN 156-5762				
12	0304-305	1	DECAL, THROTTLE				
13	2030-628	1	DECAL ANSI 2 SPEED				
14	2030-598	1	DECAL ANSI READ O&M ROLLOVER FALL HAZARD				
15	2030-596	1	DECAL ANSI ROLLOVER FALL HAZARD				
16	2030-424	1	DECAL CONTROLS RIGHT (NO TEXT)				
17	2030-423	1	DECAL CONTROLS LEFT (NO TEXT)				
18	2030-597	1	DECAL ANSI FALL HAZARD (3 POINT ENTRY)				
19	2030-592	2	DECAL ANSI LOADER CRUSH HAZARD				
20	2030-594	2	DECAL ANSI LIFT ARM BRACE				
21	2010-592	1	DECAL EMERGENCY EXIT ANSI				
22	2085-253	2	DECAL ANSI CLEAN UNDERCARRIAGES NOTICE				



# SAFETY DECALS ROW (ISO) (SN: DTA 05001-Current)

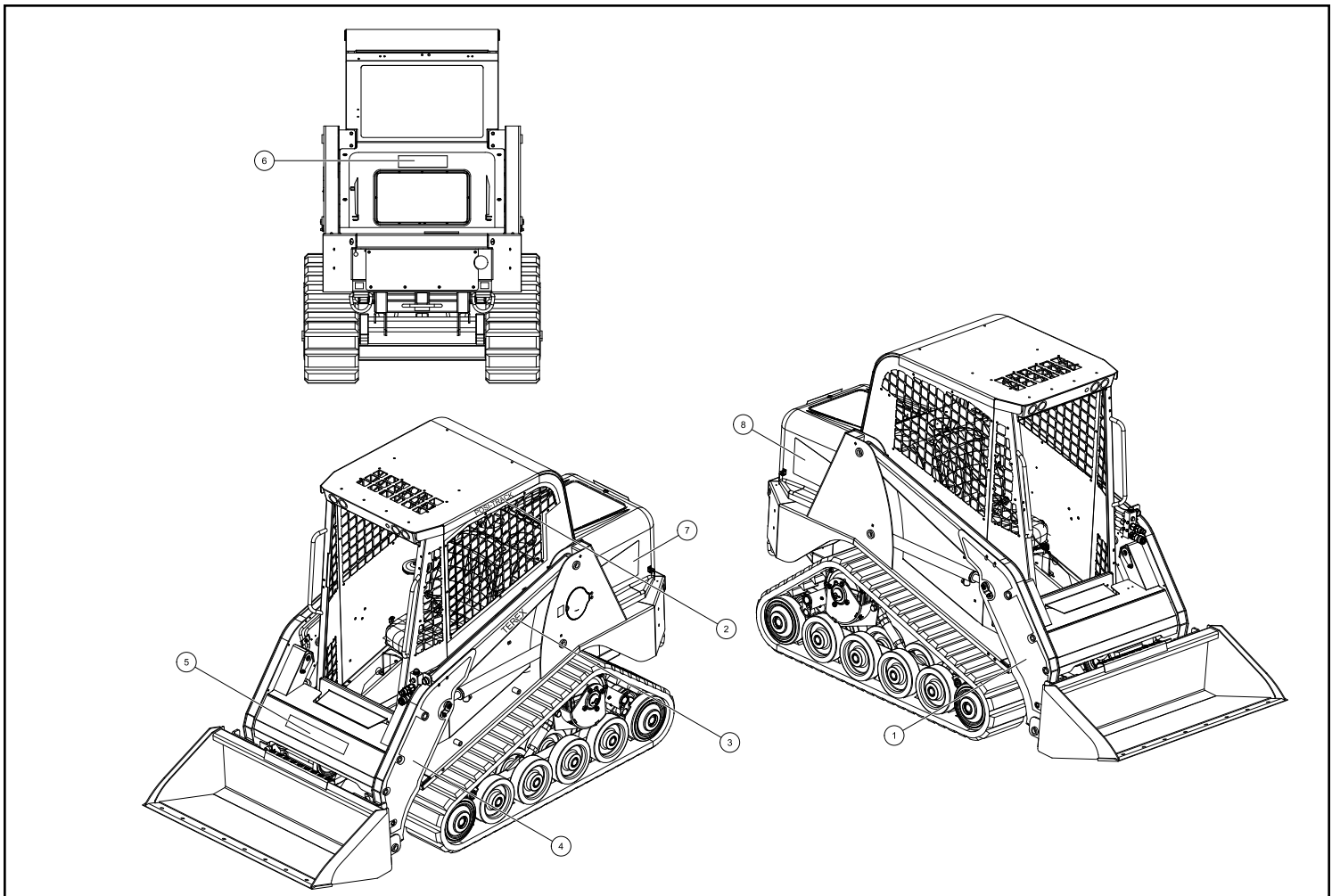
REF. NO.	PART NUMBER	QTY.	DESCRIPTION	REF. NO.	PART NUMBER	QTY.	DESCRIPTION
1	2030-422	1	DECAL,OWNER'S MANUAL				
2	2030-427	1	DECAL BRUSHCUTTING				
3	2030-553	2	DECAL ISO SAFETY SKIN OIL INJECTION				
4	4046-078	1	DECAL DIESEL FUEL ONLY				
5	2030-416	2	DECAL MOVING PARTS (TRACK WARNING)				
6	2030-565	1	DECAL ISO SAFETY BATTERY				
7	2030-418	1	DECAL ENGINE COMPARTMENT				
8	2030-551	1	DECAL ISO SAFETY FAN AND BELT				
9	2030-552	1	DECAL ISO SAFETY EXHAUST HOT				
10	4046-079	1	DECAL CE HYDRAULIC OIL ONLY				
11	0310-197	4	DECAL,TIE DOWN 156-5762				
12	2030-419	1	DECAL THROTTLE (NO TEXT)				
13	2030-428	1	DECAL 2 SPEED				
14	2030-426	1	DECAL NO RIDERS/WORK PLATFORM				
15	2030-420	1	DECAL CARRY LOADS/KEEP INSIDE				
16	2030-424	1	DECAL CONTROLS RIGHT (NO TEXT)				
17	2030-423	1	DECAL CONTROLS LEFT (NO TEXT)				
18	2030-425	1	DECAL 3 POINT (NO TEXT)				
19	2030-415	2	DECAL BOOM CRUSH PT (NO TEXT)				
20	2030-417	2	DECAL LOADER LOCK (NO TEXT)				
21	2010-592	1	DECAL EMERGENCY EXIT ANSI				



# MACHINE GRAPHICS (SN: DTA 05001-Current)

Section 22

REF. NO.	PART NUMBER	QTY.	DESCRIPTION	REF. NO.	PART NUMBER	QTY.	DESCRIPTION
1	4010-080	1	DECAL LOADER FRONT RH PT30				
2	2030-334	2	DECAL POSI TRACK				
3	2010-258	2	DECAL 2" TEREX				
4	4010-082	1	DECAL LOADER FRONT LH PT30				
5	2030-492	1	DECAL CROSS MEMBER BLACK TEREX				
6	2010-261	1	DECAL 1.5" TEREX				
7	2010-265	1	DECAL HOOD LEFT TEREX PT30				
8	2010-264	1	DECAL HOOD RIGHT TEREX PT30				



---

**Terex Construction Americas**

8800 Rostin Road

Southaven, MS 38671

**(888)-201-6008**

**(662)-393-1800**

**[www.terex.com](http://www.terex.com)**