



Product Guide | Boom Truck Cranes 2005



Product Guide

MODELS

STINGER BT2047/57

STINGER BT2857

STINGER BT3063B

STINGER BT/RM3470

STINGER TM3851

STINGER BT/RM4792

STINGER BT7077

STINGER BT/RS70100

If you're in the market for a truck crane, take a long look at **TEREX BOOM TRUCKS**

With more than 12 models to choose from, Terex offers sizes, features and options for every imaginable application.

No other truck crane line can match up!

Terex boasts an unbeatable combination of value and performance. And once you see the Terex Boom Trucks up close, you'll appreciate the heavy-duty construction of every model.

Built for long-term service, Terex Boom Trucks are an easy choice for smart buyers looking to maximize equipment investment dollars.

Better Design.

Hard working truck cranes from Terex Cranes – Waverly, Iowa USA, offer you the best combination of versatility, durability and cost.

Compare Terex Boom Trucks to those offered in today's marketplace and the conclusion is simple. Heavy duty construction and common-sense features and controls make Terex the obvious choice.

TEREX BOOM TRUCK BT2857

SPECIFICATIONS

Maximum Sheave Height: 67' (20.4 m)

Maximum Sheave Height with Jib: 103' (31.4 m)

Maximum Working Height*: 89' (27.1 m)

*with personnel lifting attachment

Available Boom Lengths: 57' (17.4 m)

Capacity at 10 Feet (3.0 m): 14,000 lb (6 350 kg)



TEREX BOOM TRUCK BT3063B

SPECIFICATIONS

Maximum Sheave Height: 73' (22.5 m)

Maximum Sheave Height with Jib: 113' (34.4 m)

Maximum Working Height*: 96' (29.3 m)

*with personnel lifting attachment

Available Boom Length: 63' (19.2 m)

Capacity at 10 Feet (3.0 m): 17,050 lb (7 734 kg)



TEREX BOOM TRUCK BT3470 (RM OPTION)

SPECIFICATIONS

Maximum Sheave Height: 80' (24.4 m)

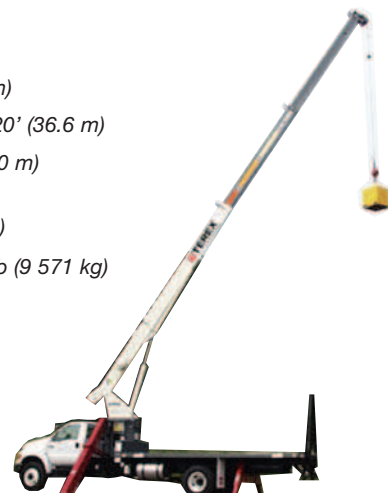
Maximum Sheave Height with Jib: 120' (36.6 m)

Maximum Working Height*: 105' (32.0 m)

*with personnel lifting attachment

Available Boom Lengths: 70' (21.3 m)

Capacity at 10 Feet (3.0 m): 21,100 lb (9 571 kg)



BOOM TRUCK



TEREX BOOM TRUCK TM3851

SPECIFICATIONS

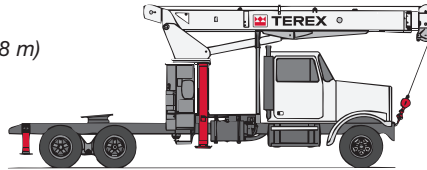
Maximum Sheave Height: 59' (18.0 m)

Maximum Sheave Height with Jib: 88' (26.8 m)

Maximum Working Height*: 77' (23.5 m)
*with personnel lifting attachment

Available Boom Lengths: 51' (15.5 m)

Capacity at 10 Feet (3.0 m): 24,000 lb (10 886 kg)



TEREX BOOM TRUCK BT4792 (RM OPTION)

SPECIFICATIONS

Maximum Sheave Height: 101' (30.8 m)

Maximum Sheave Height with Jib: 144' (43.9 m)

Maximum Working Height*: 145' (44.1 m)
*with personnel lifting attachment

Available Boom Lengths: 92' (28.0 m)

Capacity at 10 Feet (3.0 m): 30,900 lb (14 016 kg)



TEREX BOOM TRUCK BT70100 (RS OPTION)

SPECIFICATIONS

Maximum Sheave Height: 110' (33.5 m)

Maximum Sheave Height with Jib: 163' (49.7 m)

Maximum Working Height*: 164' (50.0 m)
*with personnel lifting attachment

Available Boom Lengths: 100' (30.5 m)

Capacity at 10 Feet (3.0 m):
40,000 lbs. (18,144 kg)



Better Performance.

Terex Cranes knows what the crane operator needs in a truck mounted unit. Consistent, smooth operations. Superior strength to weight ratio. And exceptionally long reaches.

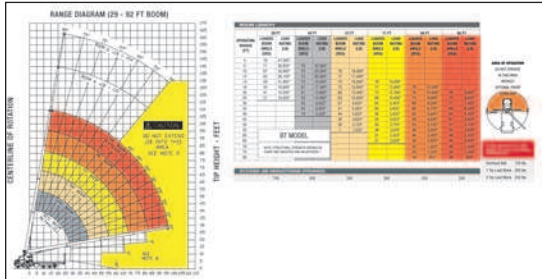
Since 1964, we have introduced a number of benchmark innovations to the boom truck industry including our patented color-coded Boom and Load Chart and the super strong Five-Sided Keel Boom. The end result is more productivity in a versatile package.

Better Quality.

The crane operator wants a hard working truck crane that offers years of dependable service. Field tested durability and precision manufacturing methods mean Terex Cranes add value and versatility to your operation with lower overall operating costs and increased profits.



10 SOLID REASONS TO SELECT



1 Color-Coded Boom and Load Charts

This patented design allows the operator to easily and quickly determine boom extension, boom angle, and load capacity – a Terex Boom Truck exclusive.



3 Overload Capacity Alert

All Terex Boom Truck cranes offer as standard equipment either an *Electronic Capacity Alert* or *Load Moment Indicating System*. Both systems are designed with an audio alarm and functional shut down when the operator encounters an overload situation.



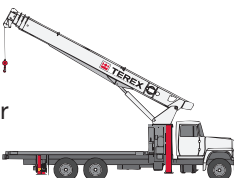
4 Human Engineered Controls

The comfortable workspace of Terex Boom Truck “fit” 95% of all operators. Ergonomically designed for greater operator comfort, low-effort controls provide for smoother and more accurate operation.

6 A Variety of Mounting Configurations

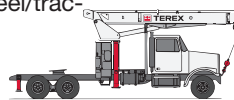
BT-Behind Cab

The most popular mounting configuration. Used not only for its lifting capabilities, but for its mobility as well.



Tractor Mount

Dedicated to those applications where a fifth wheel/tractor-trailer is required.



Rear Mount

Depending on the work application, maximum capacity and/or greater reach can be achieved in close working areas.



7 Dedicated Parts Support

Terex Cranes and its dealer organization offer full after-sales technical service and parts support. With on-line capabilities and a well trained staff, Terex Cranes can offer quick and accurate response on your parts orders.



8 More Options

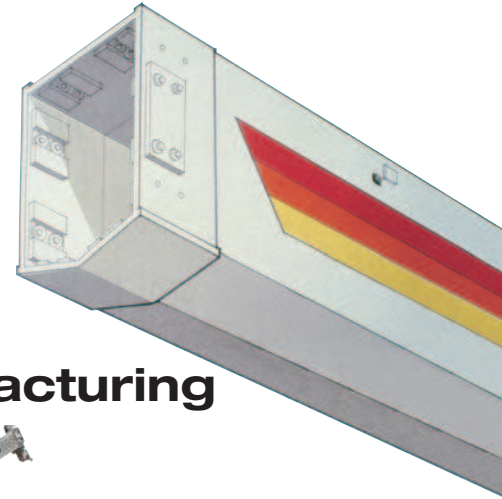
- ▲ Continuous Rotation
- ▲ Single-Stage or Two-Stage Hubs
- ▲ Radio Remote Controls
- ▲ One-Man or Two-Man Baskets
- ▲ Self-Leveling Platforms
- ▲ Front Stabilizer for 360°

These are just a few of the options available to meet a wide range of lifting demands for any work-site application.

GENUINE TEREX CRANES

2 Patented Keel Boom

Another Terex Boom Truck innovation, this exclusive design utilizes a keel-shaped baseplate combined with a deep, four-plate boom section to optimize the strength/rigidity-to-weight ratio and to provide better lateral control when swinging loads.



5 “Built-To-Last” Design and Manufacturing

Mainframe/Turret Assembly

Planetary rotation provides for a full, uninterrupted 370° rotation.

Controls

Fully proportional, excellent metering characteristics means precise boom movements. Independent outrigger controls, a standard Terex Boom Truck feature, allows the crane to be stable and level in rigorous working conditions.

Main Outriggers

Heavy-duty, wide stance, link-type outriggers (either A-frame or out-and-down style) with extra large pads.

Hydraulics

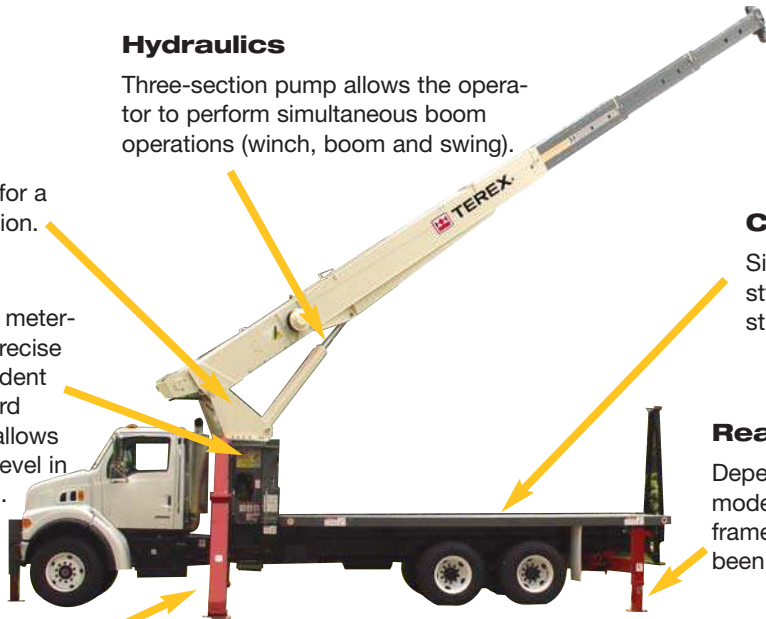
Three-section pump allows the operator to perform simultaneous boom operations (winch, boom and swing).

Construction

Single-fabricated, closed-box style subframe yields greater strength and rigidity.

Rear Outriggers

Depending on the Terex Boom Truck model, auxiliary outriggers (either A-frame or out-and-down style) have been designed for greater stability.



9 12-Month Factory Warranty

We believe in the reliability and performance of our product line. Terex Cranes – will stand behind its Terex Boom Trucks for a full 12 months after the in-service date, with 60 months on the structure.

10 Uncompromising TEREX Quality

For every Terex Cranes model series available, a prototype has been loaded to its limits and subjected to extensive testing, including: strain-gauge testing, stability testing, and cycle testing. Testing procedures include a cycle test with enough boom retraction/extension, swing, and winch-up/winch-down cycles to equal ten years of average service life. After testing, the prototype is disassembled and each component is analyzed for wear. Before shipment, each Terex Boom Truck is put through a 110-point quality inspection to be sure it will surpass your expectations for excellence.

BOOM TRUCK Specifications

| | 2047 | 2057 | 2857 | 3063B | 3470 | 3851 | 4792 | 7077 | 70100 |
|----------------------------|-----------|-----------|-----------|-----------|-----------------------------|-----------|-----------|-----------|-----------|
| PERFORMANCE | | | | | | | | | |
| Maximum Lifting Capacity | 20,000 lb | 20,000 lb | 28,000 lb | 30,000 lb | 34,000 lb | 38,000 lb | 47,000 lb | 70,000 lb | 70,000 lb |
| Standard Crane Weight | 13,000 lb | 13,500 lb | 12,800 lb | 15,900 lb | 16,900 lb | 15,200 lb | 25,200 lb | 28,700 lb | 30,600 lb |
| Maximum Boom Length | 47' | 57' | 57' | 63' | 70' | 51' | 92' | 77' | 100' |
| WINCH | | | | | | | | | |
| Speeds | 2 Speed | 2 Speed | 2 Speed | 2 Speed | 2 Speed | 2 Speed | 2 Speed | 2 Speed | 2 Speed |
| Winch Type | Planetary | Planetary | Planetary | Planetary | Planetary | Planetary | Planetary | Planetary | Planetary |
| First Layer Rope Pull | 7,900 lb | 7,900 lb | 7,900 lb | 11,400 lb | 11,400 lb | 11,400 lb | 11,400 lb | 15,000 lb | 15,000 lb |
| Wire Rope Size | 1/2" | 1/2" | 1/2" | 9/16" | 9/16" | 9/16" | 9/16" | 5/8" | 5/8" |
| Breaking Strength | 26,600 lb | 26,600 lb | 26,600 lb | 33,600 lb | 33,600 lb | 33,600 lb | 33,600 lb | 45,400 lb | 45,400 lb |
| OPERATING SPEED | | | | | | | | | |
| Swing 1 Rotation (secs) | 46 | 46 | 46 | 55 | 55 | 55 | 75 | 75 | 75 |
| Boom Up/Down (secs) | 16/10 | 16/10 | 16/10 | 25/16 | 26/16 | 25/16 | 41/30 | 60/41 | 60/41 |
| Boom Extend/Retract (secs) | 39/30 | 35/27 | 35/27 | 54/26 | 61/29 | 43/20 | 80/36 | 108/50 | 108/50 |
| HYDRAULICS | | | | | | | | | |
| Pump Sections | Three | Three | Three | Three | Three | Three | Three | Three | Three |
| Gallons Per Minute | 12/17/8 | 12/17/8 | 32/17/8 | 32/17/8 | 32/17/8 | 32/17/8 | 32/17/8 | 32/17/8 | 32/17/8 |
| OUTRIGGERS | | | | | | | | | |
| Front Outriggers | Link Type | Link Type | Link Type | Link Type | Link Type | Link Type | Link Type | Out/Down | Out/Down |
| Front Spread | 17'10" | 17'10" | 17'10" | 20'5" | 20'5" | 20'5" | 21'4" | 22'4" | 22'4" |
| Rear Outriggers | A-Frame | A-Frame | A-Frame | A-Frame | A-Frame | A-Frame | Out/Down | Out/Down | Out/Down |
| Rear Spread | 10'2" | 10'2" | 10'2" | 10'2" | 10'2" | 10'2" | 17'6" | 22'4" | 22'4" |
| CHASSIS | | | | | | | | | |
| Front Axle Requirement | 10,000 lb | 10,000 lb | 10,000 lb | 12,000 lb | 12,000 lb (RM 20,000 lb) | 20,000 lb | 20,000 lb | 20,000 lb | 20,000 lb |
| Rear Axle Requirement | 17,500 lb | 17,500 lb | 17,500 lb | 21,000 lb | 21,000 lb (RM 40,000 lb) | 40,000 lb | 40,000 lb | 40,000 lb | 40,000 lb |
| Minimum Section Modulus* | 14.18 | 14.18 | 14.18 | 16.98 | 16.98 (RM 30") | 26 | 30 | 30 | 30 |
| Cab To Axle | 156" | 156" | 156" | 168" | 168" (RM 192") | N/A | 192" | 192" | 192" |
| Wheel Base | 230" | 230" | 230" | 242" | 242" (RM 261") | N/A | 261" | 261" | 261" |

Chassis specifications are minimum for truck crane mount. Not applicable to optional mounting configurations.

*Expressed in inches³.

Specifications subject to change without notice.

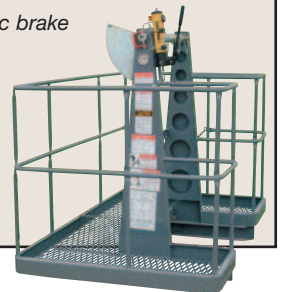
▲ STEEL ONE-MAN PLATFORM

Gravity-leveling with disc brake
Approved for single stage jib installation
Weight: 130 lb
Dimensions:
24" x 24" x 42"
300 lb Capacity



▲ STEEL TWO-MAN PLATFORM

Gravity-leveling with disc brake
Weight: 450 lb
Dimensions:
70" x 47" x 42"
600 lb Capacity



BOOM TRUCK™ options



Terex gives you a wide range of options to customize your truck crane to your exact needs. Your TEREX CRANES dealer can help you choose the combination of optional equipment and accessories that will make your new Boom Truck a perfect fit for your heavy lifting applications.

| | 2047 | 2057 | 2857 | 3063B | 3470 | 3851 | 4792 | 7077 | 70100 |
|----------------------------------|------|------|------|-------|------|------|------|------|------------|
| Shut Down Capacity Alert | STD | STD | STD | STD | STD | STD | STD | STD | STD |
| Single-Stage Jib | ▲ | ▲ | ▲ | ▲ | ▲ | ▲ | ▲ | ▲ | ▲ |
| Two-Stage Jib | ▲ | ▲ | ▲ | ▲ | ▲ | ▲ | ▲ | ▲ | ▲ |
| Three-Section Pump | STD | STD | STD | STD | STD | STD | STD | STD | STD |
| Multi-Part Load Blocks | ▲ | ▲ | ▲ | ▲ | ▲ | ▲ | ▲ | ▲ | ▲ |
| Out/Down Main Outriggers | N/A | N/A | N/A | N/A | N/A | N/A | N/A | STD | STD |
| Mid-Span Main Outriggers | N/A | N/A | N/A | N/A | N/A | N/A | N/A | STD | STD |
| Two-Speed Winch | STD | STD | STD | STD | STD | STD | STD | STD | STD |
| Auxiliary Winch | N/A | N/A | NA | N/A | N/A | N/A | ▲ | ▲ | ▲ |
| Spin-Resistant Load Line | ▲ | ▲ | ▲ | ▲ | ▲ | ▲ | ▲ | ▲ | ▲ |
| Wood Flatbed | ▲ | ▲ | ▲ | ▲ | ▲ | ▲ | ▲ | ▲ | ▲ N/A (RS) |
| Steel Flatbed | ▲ | ▲ | ▲ | ▲ | ▲ | ▲ | ▲ | ▲ | ▲ |
| Extra Heavy Duty Steel Flatbed | ▲ | ▲ | ▲ | ▲ | ▲ | ▲ | ▲ | ▲ | ▲ N/A (RS) |
| Radio Remote Controls | ▲ | ▲ | ▲ | ▲ | ▲ | ▲ | ▲ | ▲ | ▲ |
| One-Man Basket (steel) | ▲ | ▲ | ▲ | ▲ | ▲ | ▲ | ▲ | ▲ | ▲ |
| Two-Man Basket (steel) | ▲ | ▲ | ▲ | ▲ | ▲ | ▲ | ▲ | ▲ | ▲ |
| Self-leveling Work Platform | ▲ | ▲ | ▲ | ▲ | ▲ | ▲ | ▲ | ▲ | ▲ |
| Winch Drum Tensioner | ▲ | ▲ | ▲ | ▲ | ▲ | ▲ | ▲ | ▲ | ▲ |
| Continuous Rotation | ▲ | ▲ | ▲ | ▲ | ▲ | ▲ | ▲ | ▲ | ▲ STD (RS) |
| Tool Boxes | ▲ | ▲ | ▲ | ▲ | ▲ | ▲ | ▲ | ▲ | ▲ |
| Oil Cooler | ▲ | ▲ | ▲ | ▲ | ▲ | ▲ | ▲ | ▲ | ▲ STD (RS) |
| Rear Bumper | STD | STD | STD | STD | STD | STD | STD | STD | STD |
| Single Front Bumper Outrigger | ▲ | ▲ | ▲ | ▲ | ▲ | ▲ | ▲ | ▲ | ▲ STD (RS) |
| Hydraulic Hose Reel | ▲ | ▲ | ▲ | ▲ | ▲ | ▲ | ▲ | ▲ | ▲ |
| Hydraulic Auxiliary Tool Circuit | ▲ | ▲ | ▲ | ▲ | ▲ | ▲ | ▲ | ▲ | ▲ |
| BT: Mount Behind Cab* | STD | STD | STD | STD | ▲ | N/A | ▲ | ▲ | ▲ |
| RM: Rear Mount* | N/A | N/A | N/A | N/A | ▲ | N/A | ▲ | N/A | N/A |
| TM: Tractor Mount* | N/A | N/A | N/A | N/A | N/A | STD | N/A | N/A | N/A |
| RS: Riding Seat* | N/A | N/A | N/A | N/A | N/A | N/A | N/A | ▲ | ▲ |

▲ Indicates option is available

*Depends on your truck chassis specifications. Please contact your Terex Cranes dealer for custom installation information.

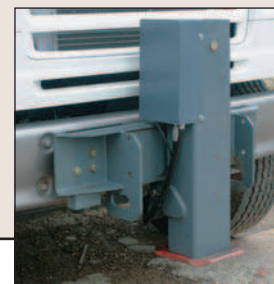
▲ ALUMINUM TWO-MAN PLATFORM

Manually rotatable
Hydraulic self leveling
Weight: 500 lb
Dimensions: 36" x 72" x 42"
600 lb Capacity



▲ SINGLE FRONT BUMPER OUTRIGGER

Operates hydraulically
Tilt system with spring latch
Required for 360° capacity
Contact Terex- for chassis applications





TEREX

Product Guide | Contacts

SALES

Tom Limbach

Sales Director, Terex Cranes
Office: (319) 352-9357
Mobile: (815) 703-3905
Office Fax: (319) 352-9395
Email: tom.limbach@terexwaverly.com

Diane Sheedy

Director of International Sales
Office: (319) 352-9326
Office Fax: (319) 352-9395
Email: diane.sheedy@terexwaverly.com

Bruce Kramer

Sales Manager, Terex Cranes
Office: (319) 352-9347
Mobile: (815) 703-3896
Office Fax: (319) 352-9395
Email: bruce.kramer@terexwaverly.com

Chad Brandenburg

Sales Coordinator, Terex Cranes
Office: (319) 352-9356
Mobile: (910) 367-3152
Office Fax: (319) 352-9395
Email: chad.brandenburg@terexwaverly.com

Angie Scribner

Sales Assistant, Terex Cranes
Office: (319) 352-9309
Office Fax: (319) 352-9395
Email: angie.scribner@terexwaverly.com

SERVICE – PARTS

Roger Jones

Service Manager – Product Support
Office: (910) 395-8504
Mobile: (910) 367-6260
Office Fax: (910) 395-8538
Email: rjones@american-crane.com

Dino Nelson

Service Training Specialist
Office: (319) 352-9338
Mobile: (815) 703-1800
Office Fax: (319) 352-9378
Email: dino.nelson@terexwaverly.com

Jim Chivers (Boom Trucks)

Service Manager – Product Support
Office: (319) 352-9352
Mobile: (815) 703-3901
Office Fax: (319) 352-9378
Email: jim.chivers@terexwaverly.com

Fred Backer (Boom Trucks)

Service Technician
Office: (319) 352-9388
Mobile: (815) 703-6514
Office Fax: (319) 352-9378
Email: fred.backer@terexwaverly.com

Dan Kalkbrenner (RT & T Cranes)

Service Manager - Product Support
Office: (319) 352-9368
Mobile: (815) 703-3900
Office Fax: (319) 352-9378
Email: dan.kalkbrenner@terexwaverly.com

Jim Dawson (RT & T Cranes)

Service Manager - Product Support
Office: (319) 352-9366
Mobile: (815) 703-3899
Office Fax: (319) 352-9378
Email: jim.dawson@terexwaverly.com

PARTS

Peggy Pellican

Director of Aftermarket Sales
Office: (336) 644-0536
Mobile: (336) 442-8348
Office Fax: (336) 644-0495
Fax: (801) 991-8193
Email: ppellican@terexparts.com

QUALITY ASSURANCE

Lee Linderkamp

Quality Assurance Manager
Office: (319) 352-9364
Mobile: (815) 703-3898
Office Fax: (319) 352-9378
Email: lee.linderkamp@terexwaverly.com

Clint Schrage

Warranty Manager
Office: (319) 352-9305
Office Fax: (319) 352-9378
Email: clint.schrage@terexwaverly.com

ENGINEERING

George Green

Director of Engineering
Office: (319) 352-9315
Office Fax: (319) 352-9378
Email: george.green@terexwaverly.com

Dave Schoonover (Boom Trucks)

Project Engineer
Office: (319) 352-9372
Office Fax: (319) 352-9378
Email: dave.schoonover@terexwaverly.com

Brian Thomas (RT Cranes)

Project Engineer
Office: (319) 352-9386
Office Fax: (319) 352-9378
Email: brian.thomas@terexwaverly.com

Dave Frerking (T Cranes)

Project Engineer
Office: (319) 352-9321
Office Fax: (319) 352-9378
Email: dave.frerking@terexwaverly.com

MANAGEMENT

Dan Micheau

Operations Manager, Terex Cranes
Office: (319) 352-9314
Mobile: (815) 703 3903
Office Fax: (319) 352-5727
Email: dan.micheau@terexwaverly.com

TEREX Cranes
106-12th Street S.E.
Waverly, IA 50677-9466 USA

TEL (319) 352-3920
FAX (319) 352-5727
EMAIL inquire@terexwaverly.com
WEB terex.com