

# ROUGH TERRAIN CRANE

**130 Ton Lifting Capacity**



## Highlights:

The jobsite versatility to do more and the durability for long-term service makes the Terex® RT130 an outstanding value. For performance and low cost-of-ownership, add the RT130 to your fleet.

- ▶ 130 T (118 t) Maximum Lifting Capacity
- ▶ 155 ft (47 m) Dual Mode Double Keel Boom
  - Mode 1 – Optimized for Best Capacities on Long Radius
  - Mode 2 – Optimized for Best Capacities on Short Radius
- ▶ Three Mode Steering
- ▶ Purpose Built Frame and Drive Train System

## Applications:

- ▶ Bridge Construction
- ▶ Steel Erection
- ▶ Construction Lift and Place
- ▶ Drill Rig Placement and Service
- ▶ Refinery Refurbishment and Maintenance
- ▶ Rental Services
- ▶ Equipment Unloading and Placement

**WORKS FOR YOU.™**

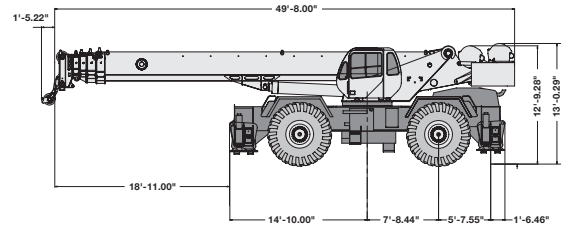
# SPECIFICATIONS

# RT130



- Maximum Lifting Capacity**  
130 T (118 t)
- Maximum Boom Length**  
155 ft (47 m)
- Maximum Tip Height with Jib Extended**  
235 ft (71.6m)

## Dimensions



## Operational Ease

Dual boom function modes match the crane to the work.

- Mode 1 - optimized for best capacities on long radius
- Mode 2 - optimized for best capacities on short radius

Electro Proportional joysticks provide smooth control of machine functions and share the same layout as other Terex cranes.

In-cab electronic monitoring of operator defined work area and load parameters.

Operator cab offers flip-up roof window and removable front cab glass to enhance visibility.

## Strength and Power

Purpose built frame provides outstanding rigidity without adding unnecessary weight.

300 horsepower Cummins diesel engine and 6-speed power shift transmission matched to a 4-wheel drive system provide power and the proper speeds to travel in virtually all site conditions.

Proven double keel boom design provides boom strength for continuous heavy lifts.

Three steering modes allow you to maneuver in confined job sites and position the crane for optimal lifting.

High strength outriggers can be independently positioned for ease of leveling and stability.

## Serviceability







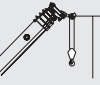

Standard boom wear pads offer long life and are easily adjustable. Pad replacement does not require boom disassembly.

Both the inner and outer boom can be lubricated via easily accessible grease zerks.

Most fluid levels are easily verified by ground level sight gauges.

Fluid and engine filtration is easily accessible with no tools.

## Key Specifications

Weights	 GVW	 F	 R
	103,672 lb (47,025 kg)	69,136 lb (31,360 kg)	34,536 lb (15,665 kg)
	133,272 lb (60,451 kg)	57,411 lb (26,041 kg)	75,861 lb (34,410 kg)
	Lattice type, side stow, bi-fold Pullout extension Angular offsets		28 ft 10 in / 54 ft 11 in (8.8 m / 16.7 m) 17 ft 2 in (5.2 m) 0° / 20° / 40°
	Max. tip height main boom Max. tip height with first jib section swung-on Max. tip height with first and second jib sections swung-on Max. tip height with both jib sections swung-on and pullout extended		164 ft (50 m) 193 ft (59 m) 218 ft (66.5 m) 235 ft (71.6 m)
	Cummins QSC-300 6 cylinders Rated power Maximum gross torque		300 hp (224 kW) @ 2,200 rpm 1,000 ft-lb (1,356 Nm) @ 1,400 rpm

## Optional Equipment

- Side stow jib
- Auxiliary winch
- Selection of hook blocks
- Air conditioning / heat pump
- LP heater
- Cold weather package
- Mirror – provides view of winch
- Tire inflation kit
- Pintle Hook – fit to front and rear of carrier
- Revolving beacon – Amber
- Strobe light – Amber
- Work Light Package – 3 additional lights
- 360-degree spotlight
- Master battery disconnect switch

[www.terexcranes.com](http://www.terexcranes.com)

Effective Date: June 2010. Product specifications and prices are subject to change without notice or obligation. The photographs and/or drawings in this document are for illustrative purposes only. Refer to the appropriate Operator's Manual for instructions on the proper use of this equipment. Failure to follow the appropriate Operator's Manual when using our equipment or to otherwise act irresponsibly may result in serious injury or death. The only warranty applicable to our equipment is the standard written warranty applicable to the particular product and sale and Terex makes no other warranty, express or implied. Products and services listed may be trademarks, service marks or trade-names of Terex Corporation and/or its subsidiaries in the USA and other countries. All rights are reserved. TEREX is a registered trademark of Terex Corporation in the USA and many other countries. © 2010 Terex Corporation. RT130 Sales Flyer-06/10



Terex Cranes, Global Marketing, Dinglerstraße 24, 66482 Zweibrücken, Germany  
 Tel. +49 (0) 6332 830, Email: info.cranes@terex.com, www.terexcranes.com