



RT 230 XL
Rough Terrain Crane
Datasheet
imperial



RT 230 XL

Features:

- ▶ Rated capacity:
30 ton @ 10 ft working radius
- ▶ Maximum boom length:
100 ft
- ▶ Maximum tip height:
140 ft

WORKS FOR YOU.™

Key

| | |
|-------|---|
| | 3 |
|-------|---|

Dimensions

| | |
|------------------------|---|
| Crane dimensions | 4 |
| Crane weights | 5 |

Load Charts

| | |
|--|----|
| Range Diagram – Main Boom – Outriggers fully extended (100%) | 6 |
| Load Chart – Main Boom – Outriggers fully extended (100%) | 7 |
| Range Diagram – Main Boom – Outriggers fully retracted (0%) | 8 |
| Load Chart – Main Boom – Outriggers fully retracted (0%) | 9 |
| Range Diagram – Main Boom – 26 ft offsettable jib | 10 |
| Load Chart – Main Boom – 26 ft offsettable jib | 11 |
| Range Diagram – Main Boom – 43 ft offsettable jib | 12 |
| Load Chart – Main Boom – 43 ft offsettable jib | 13 |
| Range Diagram – Main Boom – On tires | 14 |
| Load Chart – Main Boom – On tires | 15 |

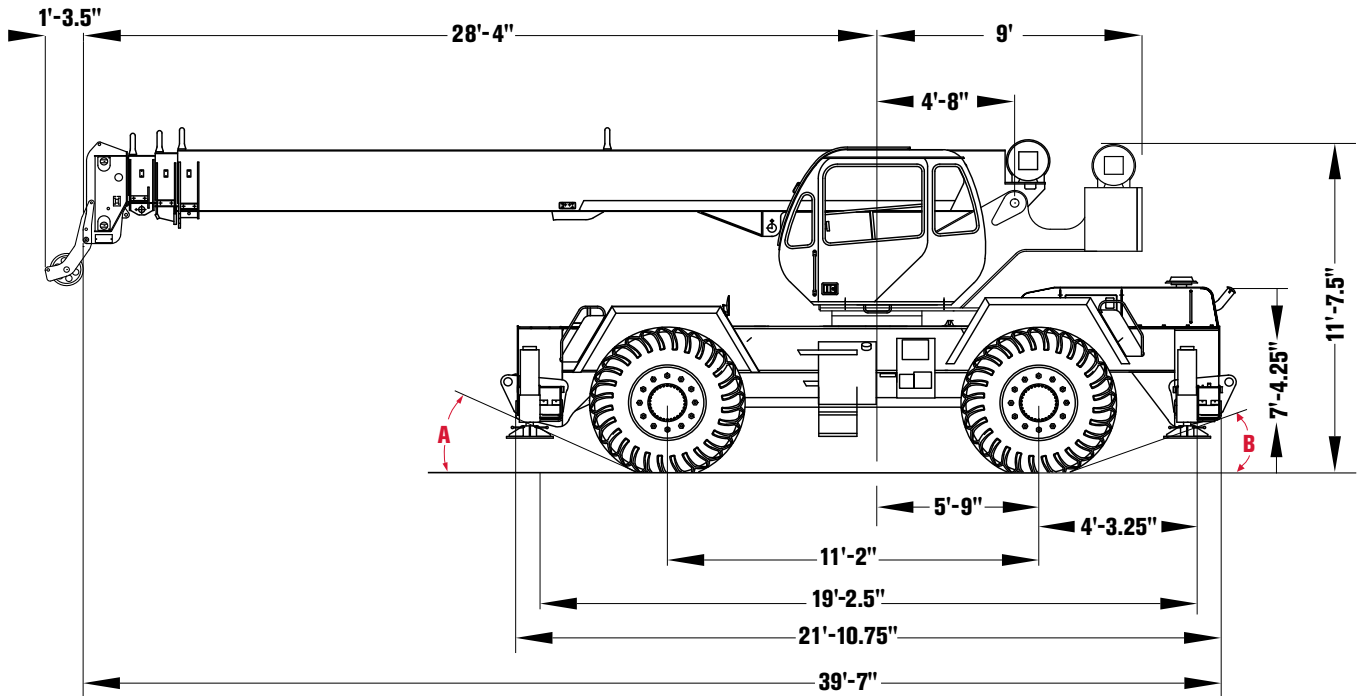
Technical Description

| | |
|--|--------|
| Boom | 16 |
| Hoist, rope and hook | 16, 17 |
| Superstructure | 17 |
| Cab, controls, operator aids and load limiter / load indicator | 17, 18 |
| Carrier, engine, drive-line and hydraulic system | 18, 19 |
| Vehicle performance | 19 |
| Tires | 19 |

| | | | |
|---|--|---|---|
|  | Counterweight |  | General performance |
|  | Main boom |  | Telescoping mode |
|  | Boom length |  | Boom luffing angle |
|  | Tip height |  | Working radius |
|  | Boom with extension |  | Max. boom length with extension |
|  | Main boom with aux head |  | Distance from the hook to the head sheave pin |
|  | Slewing / Allowable slewing range |  | Slewing locked / Slewing locked at specified position |
|  | Slewing brake |  | Slewing gears |
|  | Outriggers / Lifting on outriggers (100/50/0% extended) |  | Lifting on wheels / Pick & Carry |
|  | Main hoist |  | Auxiliary hoist |
|  | Hoist speed |  | Rope length |
|  | Rope - Standard / Optional |  | Max. line pull |
|  | Rope diameter |  | Tire |
|  | Hook block |  | Controls |
|  | Cab |  | Engine |
|  | Operator aids / Load limiter / Load indicator |  | Steering |
|  | Mechanical transmission |  | Speed |
|  | HYDR Hydraulics |  | Heating / Air conditioning |
|  | Working temperature |  | Gradeability |
|  | Lights |  | Gross vehicle weight |
|  | Crane / Crane in standard configuration |  | Weight on front axle |
|  | Crane without counterweight |  | Weight on rear axle |

CRANE DIMENSIONS

RT 230 XL

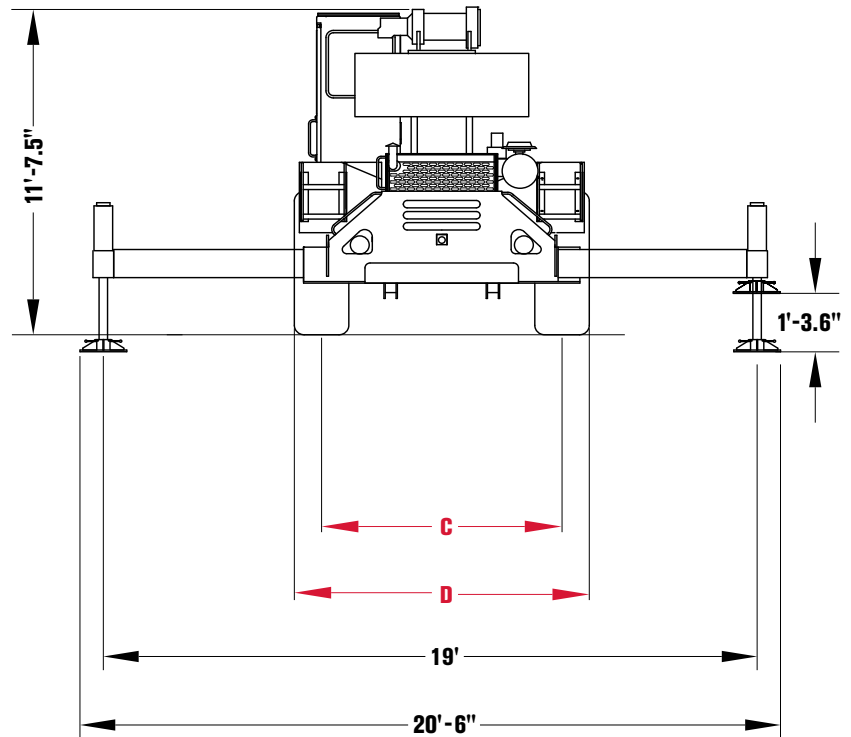


| Tire Variances | 16.00 x 25 | 20.5 x 25 |
|---------------------|------------|-----------|
| A (Approach Angle) | 25.1° | 25.1° |
| B (Departure Angle) | 23.1° | 23.1° |
| C (Tire Track) | 6'-7.5" | 6'-10.5" |
| D (Overall Width) | 8' | 8'-8" |

Note:

All heights are based on 20.5 x 25 tires.


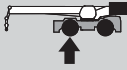
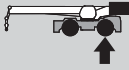
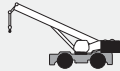







| Outrigger Spread | |
|-------------------------|---------|
| From Jack CL to Jack CL | |
| Fully Extended | 19' |
| Mid-Position | 13'-2" |
| Fully Retracted | 7'-4.5" |



CRANE WEIGHTS

RT 230 XL

Approximate Weights

| | |  |  |  |
|---|------------------------------------|---|--|---|
|  | | 55,930 lb | 28,972 lb | 26,958 lb |
| Add / Subtract for main optional equipment | | | | |
|  | 26 ft to 43 ft swing on jib stowed | + 1500 lb | + 2600 lb | - 1100 lb |
|  | Auxiliary boom head | + 100 lb | + 300 lb | - 200 lb |
|  | Auxiliary hoist* | + 115 lb | - 25 lb | + 140 lb |
|  | 4 sheaves, 30 T | + 655 lb | + 1071 lb | - 416 lb |
|  | 3 sheaves, 30 T | + 670 lb | + 1099 lb | - 429 lb |
|  | 2 sheaves, 25 T | + 682 lb | + 1117 lb | - 435 lb |
|  | 7T Hookball | + 240 lb | + 290 lb | - 50 lb |

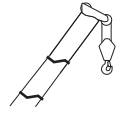
NOTE: Values are subject to 2% variation

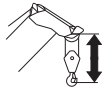
* Weight includes rope

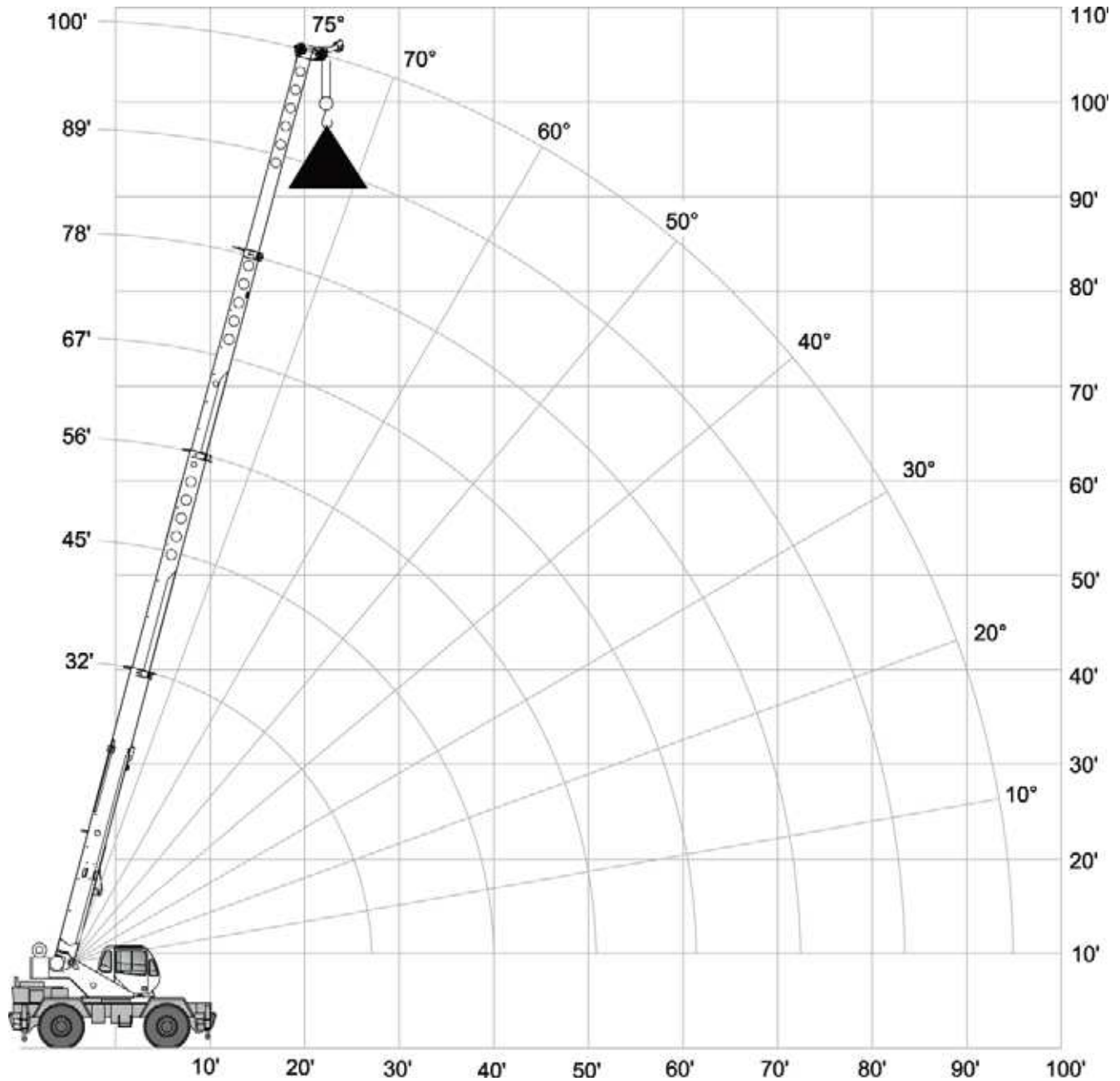
RANGE DIAGRAM - MAIN BOOM

RT 230 XL

Outriggers Fully Extended (100%)



 with hook block:
4 ft 5 in



LOAD CHART – MAIN BOOM

RT 230 XL



Outriggers Fully Extended (100%)

 10,000 lbs

 19 ft (100%)

 360°

Standard ASME
B30.5

|  | Boom Length | | | | | | |  |
|---|-------------|----------|----------|----------|----------|----------|----------|---|
| | 32.29 ft | 44.79 ft | 55.79 ft | 66.79 ft | 77.79 ft | 88.79 ft | 99.79 ft | |
| ft | lbs | lbs | lbs | lbs | lbs | lbs | lbs | ft |
| 10 | 60,000 | 46,500 | | | | | | 10 |
| 12 | 48,900 | 45,100 | 43,000 | | | | | 12 |
| 15 | 42,500 | 39,100 | 37,100 | 35,700 | | | | 15 |
| 20 | 30,000 | 30,900 | 30,300 | 29,000 | 26,900 | | | 20 |
| 25 | 22,400 | 23,400 | 23,800 | 24,100 | 22,600 | 20,300 | 15,000 | 25 |
| 30 | 19,300 | 18,400 | 18,800 | 19,100 | 19,300 | 17,400 | 12,800 | 30 |
| 35 | | 13,800 | 14,300 | 14,500 | 14,700 | 14,800 | 11,100 | 35 |
| 40 | | 10,400 | 11,100 | 11,300 | 11,500 | 11,600 | 9,700 | 40 |
| 45 | | | 8,700 | 9,000 | 9,200 | 9,300 | 8,600 | 45 |
| 50 | | | 6,900 | 7,300 | 7,500 | 7,600 | 7,600 | 50 |
| 55 | | | | 5,900 | 6,100 | 6,200 | 6,300 | 55 |
| 60 | | | | 4,700 | 5,000 | 5,100 | 5,200 | 60 |
| 65 | | | | | 4,100 | 4,200 | 4,300 | 65 |
| 70 | | | | | 3,300 | 3,500 | 3,600 | 70 |
| 75 | | | | | | | 2,900 | 75 |
| 80 | | | | | | | 2,400 | 80 |
| 85 | | | | | | | 1,900 | 85 |
| 90 | | | | | | | 1,400 | 90 |
| 95 | | | | | | | 1,000 | 95 |

Notes to lifting capacity

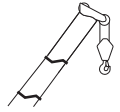
Lifting capacities do not exceed 85% of tipping load. Weight of hook blocks and slings is part of the load, and is to be deducted from the capacity ratings. Consult operation manual for further details.

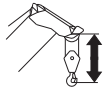
Note: Data published herein is intended as a guide only and shall not be construed to warrant applicability for lifting purposes. Crane operation is subject to the computer charts and operation manual both supplied with the crane.

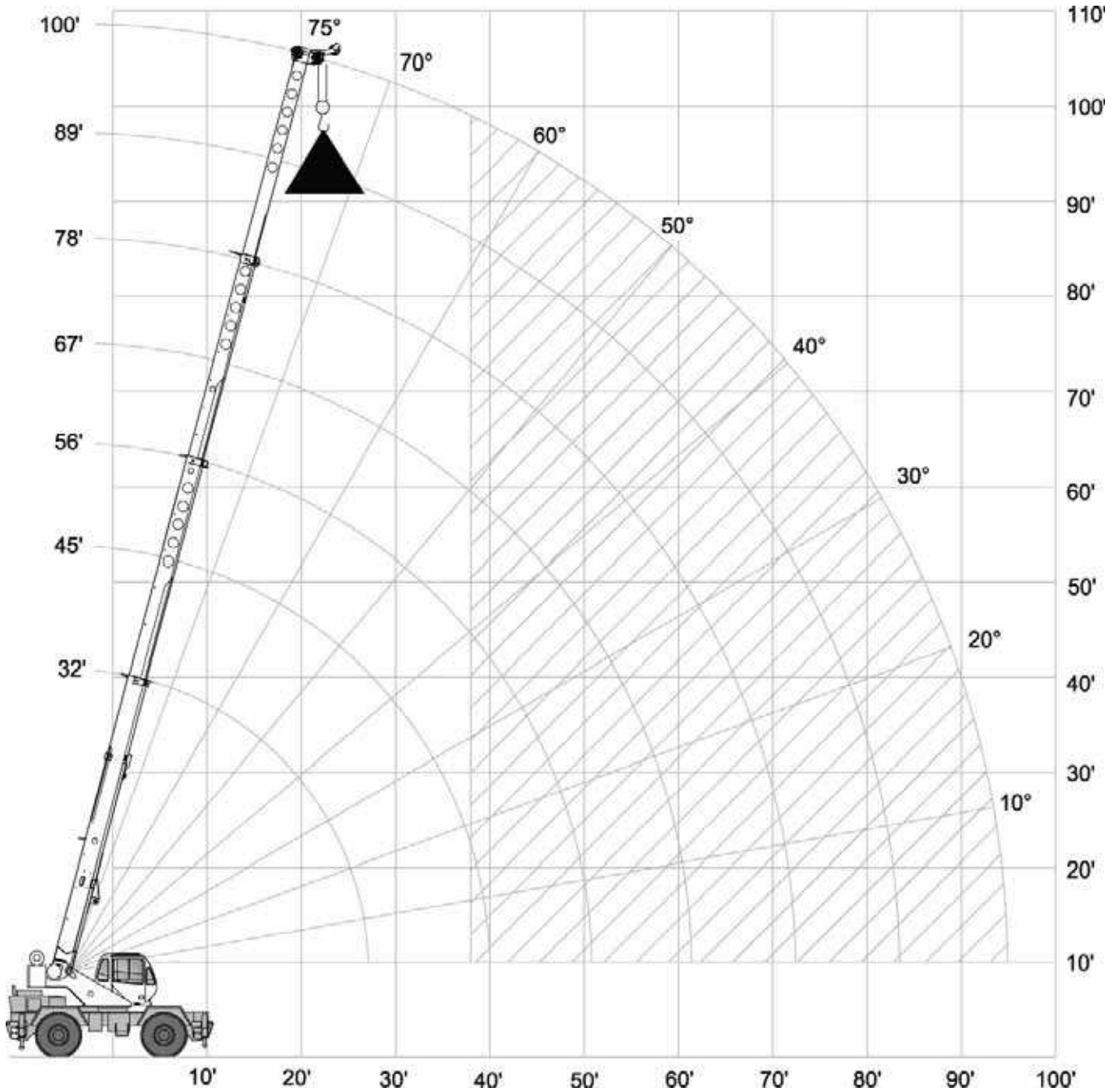
RANGE DIAGRAM - MAIN BOOM

RT 230 XL

Outriggers Fully Retracted (0%)



 with hook block:
4 ft 5 in



LOAD CHART – MAIN BOOM

RT 230 XL



Outriggers Fully Retracted (0%)

 10,000 lbs

 7 ft 4.5 in (0%)

 360°

Standard ASME
B30.5

|  | Boom Length | | | | | | |  |
|---|-------------|----------|----------|----------|----------|----------|----------|---|
| | 32.29 ft | 44.79 ft | 55.79 ft | 66.79 ft | 77.79 ft | 88.79 ft | 99.79 ft | |
| ft | lbs | lbs | lbs | lbs | lbs | lbs | lbs | ft |
| 10 | 34,300 | 35,100 | | | | | | 10 |
| 12 | 24,500 | 25,300 | 25,700 | | | | | 12 |
| 15 | 16,200 | 17,100 | 17,500 | 17,700 | | | | 15 |
| 20 | 9,100 | 10,100 | 10,500 | 10,600 | 10,800 | | | 20 |
| 25 | 5,300 | 6,200 | 6,700 | 6,900 | 7,000 | 7,100 | 7,200 | 25 |
| 30 | 3,700 | 3,900 | 4,300 | 4,500 | 4,700 | 4,800 | 4,900 | 30 |
| 35 | | 2,200 | 2,600 | 2,900 | 3,100 | 3,200 | 3,300 | 35 |
| 40 | | 900 | 1,500 | 1,700 | 1,900 | 2,000 | 2,100 | 40 |
| 45 | | | | 800 | 1,000 | 1,100 | 1,300 | 45 |

Notes to lifting capacity

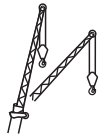
Lifting capacities do not exceed 85% of tipping load. Weight of hook blocks and slings is part of the load, and is to be deducted from the capacity ratings. Consult operation manual for further details.

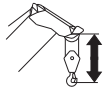
Note: Data published herein is intended as a guide only and shall not be construed to warrant applicability for lifting purposes. Crane operation is subject to the computer charts and operation manual both supplied with the crane.

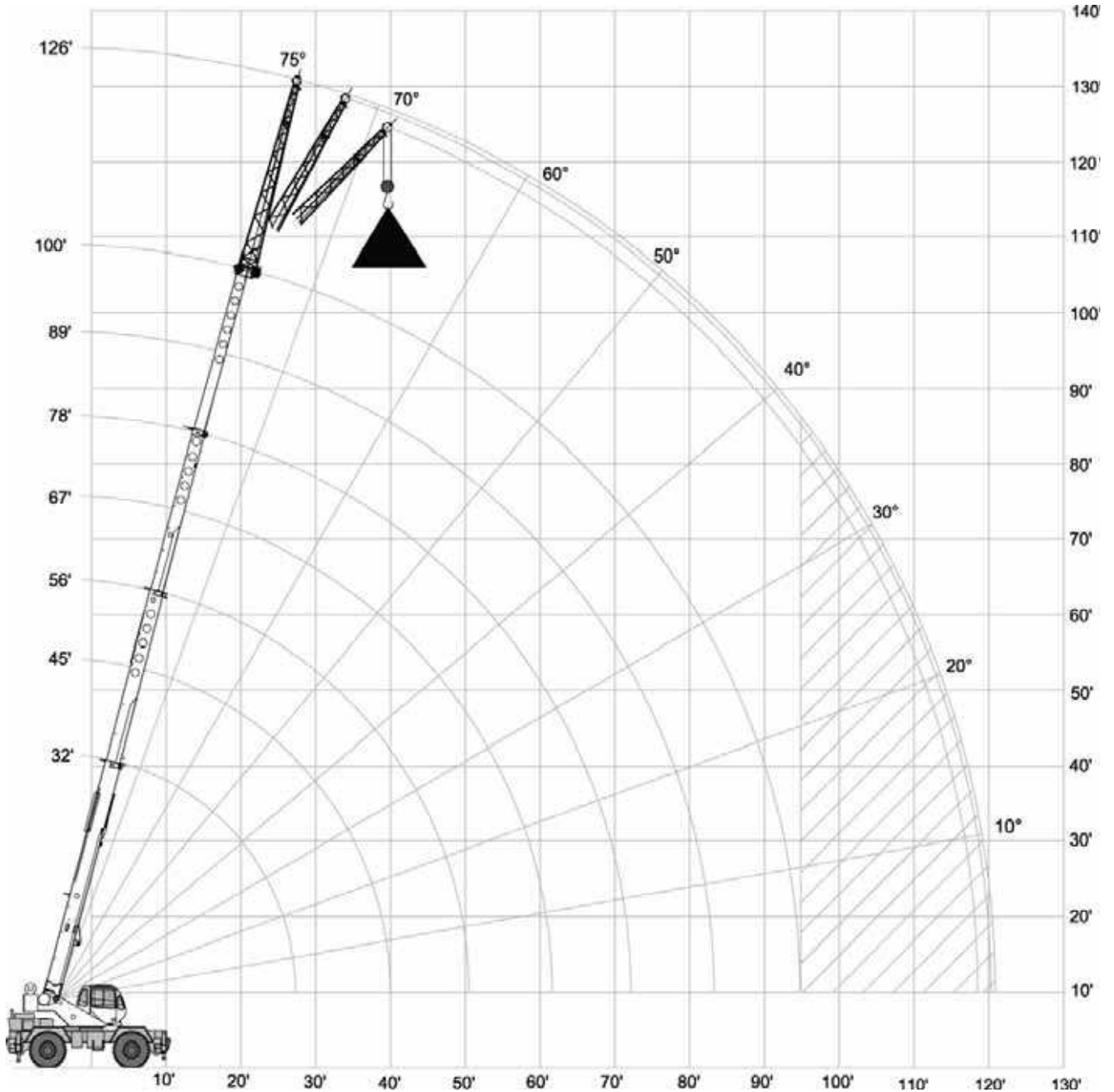
RANGE DIAGRAM - MAIN BOOM

RT 230 XL

With Jib, 26 ft offset



 with hook block:
4 ft 5 in



LOAD CHART – MAIN BOOM

RT 230 XL




With Jib, 26 ft offset

 10,000 lbs

 19 ft (100%)

 360°

Standard ASME
B30.5

| 26 ft Offsettable Jib | | | | | |
|--|-------|--|-------|--|-------|
| 0° | | 15° | | 30° | |
|  ft | lbs |  ft | lbs |  ft | lbs |
| 37 | 9,000 | 43 | 7,300 | 47 | 5,500 |
| 41 | 8,500 | 46 | 6,700 | 51 | 5,200 |
| 44 | 8,000 | 50 | 6,200 | 55 | 4,900 |
| 50 | 7,200 | 55 | 5,500 | 60 | 4,400 |
| 56 | 6,200 | 60 | 5,000 | 65 | 4,000 |
| 61 | 5,400 | 65 | 4,400 | 70 | 3,600 |
| 66 | 3,900 | 70 | 3,800 | 74 | 3,200 |
| 73 | 3,000 | 77 | 3,100 | 80 | 2,700 |
| 80 | 2,400 | 84 | 2,500 | 86 | 2,200 |
| 86 | 1,900 | 90 | 1,900 | 92 | 1,700 |
| 93 | 1,400 | 96 | 1,400 | 98 | 1,300 |
| 100 | 900 | 102 | 900 | 103 | 900 |

Notes to lifting capacity

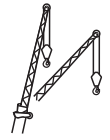
Lifting capacities do not exceed 85% of tipping load. Weight of hook blocks and slings is part of the load, and is to be deducted from the capacity ratings. Consult operation manual for further details.

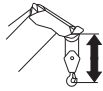
Note: Data published herein is intended as a guide only and shall not be construed to warrant applicability for lifting purposes. Crane operation is subject to the computer charts and operation manual both supplied with the crane.

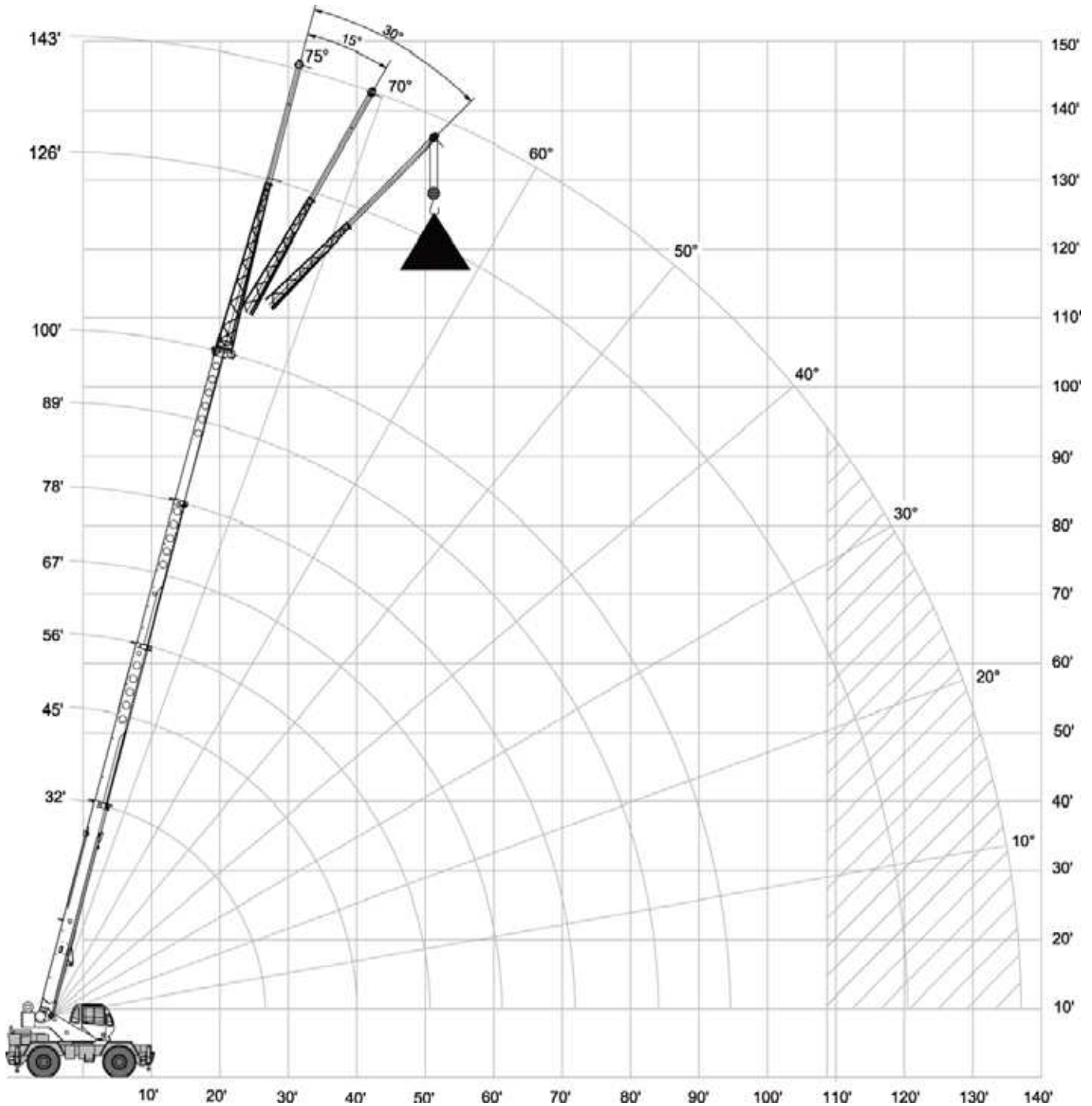
RANGE DIAGRAM – MAIN BOOM

RT 230 XL

With Jib, 43 ft offset



 with hook block:
4 ft 5 in



LOAD CHART – MAIN BOOM

RT 230 XL




With Jib, 43 ft offset

 10,000 lbs

 19 ft (100%)

 360°

Standard ASME
B30.5

| 43 ft Offsettable Jib | | | | | |
|--|-------|--|-------|--|-------|
| 0° | | 15° | | 30° | |
|  ft | lbs |  ft | lbs |  ft | lbs |
| 41 | 5,000 | 51 | 3,300 | 59 | 2,600 |
| 46 | 4,700 | 56 | 3,200 | 63 | 2,600 |
| 51 | 4,400 | 61 | 3,100 | 67 | 2,500 |
| 58 | 4,000 | 67 | 2,900 | 74 | 2,400 |
| 64 | 3,700 | 74 | 2,800 | 80 | 2,400 |
| 70 | 3,500 | 79 | 2,700 | 85 | 2,300 |
| 76 | 3,300 | 85 | 2,600 | 90 | 2,300 |
| 83 | 2,800 | 91 | 2,500 | 96 | 2,200 |
| 90 | 2,200 | 98 | 2,000 | 102 | 1,900 |
| 98 | 1,800 | 106 | 1,600 | 108 | 1,500 |
| 106 | 1,300 | 112 | 1,200 | 114 | 1,100 |
| 115 | 900 | 119 | 800 | | |

Notes to lifting capacity

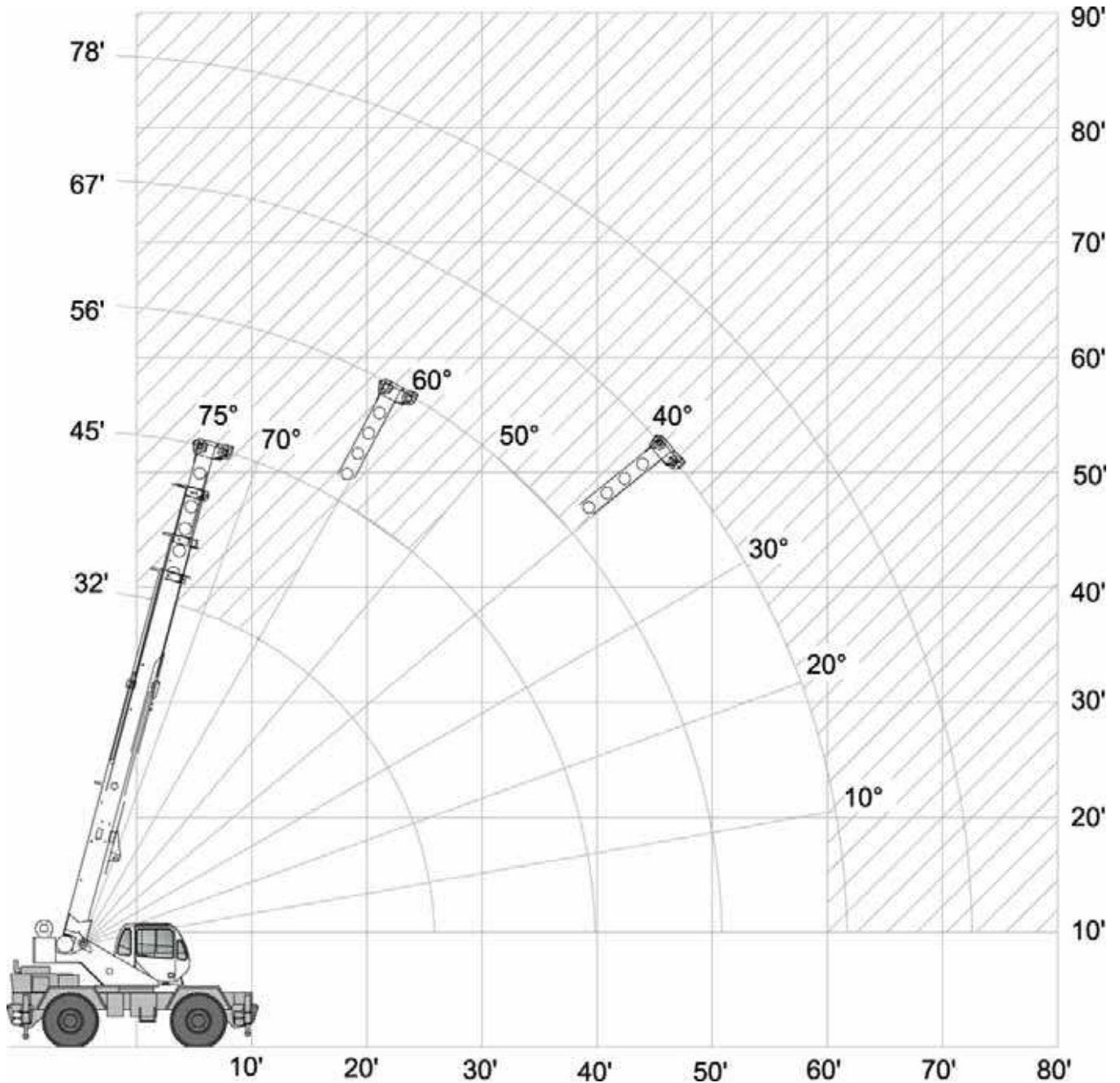
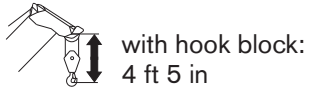
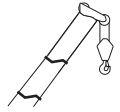
Lifting capacities do not exceed 85% of tipping load. Weight of hook blocks and slings is part of the load, and is to be deducted from the capacity ratings. Consult operation manual for further details.

Note: Data published herein is intended as a guide only and shall not be construed to warrant applicability for lifting purposes. Crane operation is subject to the computer charts and operation manual both supplied with the crane.

RANGE DIAGRAM – MAIN BOOM

RT 230 XL

On Tires

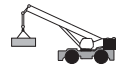


LOAD CHART – MAIN BOOM

RT 230 XL



On Tires

 10,000 lbs



On tires
20.50 x 25-24 PR

Standard ASME
B30.5








| Boom | |  Stationary 360° | Travel Speed Boom straight over front | |  |
|--------|--------|--|--|---------|---|
| Radius | Length | 0 mph | Creep | 2.5 mph | |
| ft | ft | lbs | lbs | lbs | |
| 10 | 32 | 26,600 | 34,300 | 23,300 | |
| 12 | 32 | 19,900 | 29,400 | 19,700 | |
| 15 | 32 | 13,900 | 23,900 | 15,600 | |
| 20 | 45 | 8,100 | 17,400 | 11,000 | |
| 25 | 45 | 5,300 | 11,000 | 7,800 | |
| 30 | 45 | 3,400 | 7,700 | 5,600 | |
| 35 | 56 | 2,100 | 5,900 | 4,300 | |
| 40 | 56 | 1,300 | 4,500 | 3,300 | |
| 45 | 56 | 700 | 3,500 | 2,500 | |
| 50 | 67 | | 2,700 | 1,800 | |
| 55 | 67 | | 2,000 | 1,300 | |
| 60 | 67 | | 1,400 | 800 | |

Notes to lifting capacity







Lifting capacities do not exceed 85% of tipping load. Weight of hook blocks and slings is part of the load, and is to be deducted from the capacity ratings. Consult operation manual for further details.

Note: Data published herein is intended as a guide only and shall not be construed to warrant applicability for lifting purposes. Crane operation is subject to the computer charts and operation manual both supplied with the crane.

Boom




| Standard configuration: | |
|---|--|
|  | 4 sections hydraulic actuated boom |
|  | Full power mechanically synchronized |
|  | Min. / Max. 32 ft / 100 ft |
|  | Boom elevation angle range (min. / max.) -4° / 76° |
| Optional configuration: | |
|  | Single sheave |
|  | One section, side stowable Angular offsets 0, 15 and 30 degrees |
|  | With one section jib 120 ft With two section jib 147 ft |

Hoist, Rope and Hook




| Standard configuration: | |
|---|--|
|  | Grooved drum Storage capacity 598 ft |
|  | Two speed ratios Without load in 6th layer (low range / high range) 297 ft/min / 475 ft/min Without load in 1st layer (low range / high range) 205 ft/min / 329 ft/min |
|  | 6 x 19 IWRC XIPS, right regular lay, preformed |
|  | 5/8 in |
|  | 479 ft |
|  | Max. line pull; 1st layer low-range 35,800 lbs Max. line pull permissible 9,000 lbs |

| Optional configuration: | | |
|---|--|-------------------------|
|  | Hook and ball | 7 ton |
| | 2 sheaves | 25 ton |
| | 3 sheaves | 30 ton |
| | 4 sheaves | 30 ton |
|  | Grooved drum Storage capacity | 598 ft |
|  | Without load in 6th layer (low range / high range) | 205 ft/min / 329 ft/min |
| | Without load in 1st layer (low range / high range) | 297 ft/min / 475 ft/min |
|  | Rotation resistant compacted strand 18 x 19 or 19 x 19 | |
|  | | 5/8 in |
|  | | 479 ft |
|  | Minimum breaking strength | 35,800 lbs |
| | Max. line pull permissible | 9,000 lbs |

Superstructure

| Standard configuration: | | |
|---|---|-------|
|  | Non stop | 360° |
| | Maximum rotation speed without load | 3 rpm |
|  | Hydraulic motor Planetary reducer | |
|  | Foot actuated pedal – provides variable braking force | |
| | Travel Lock – 360° house lock | |

Cab, Controls, Operator aids and Load limiter / Load indicator

| Standard configuration: | | |
|---|--|--|
|  | Sliding door | |
| | Tinted safety glass throughout | |
| | Six way adjustable seat | |
|  | Armrest mounted dual axis electro-proportional joysticks | |
| | Steering wheel column with gear selector on the left and directional light selector on the right | |
| | Dashboard mounted switches for outrigger operation | |
|  | Graphic interface for load indicator | |

Optional configuration:



Heater
Air conditioner
Work lights
Rotating beacon

Carrier, Engine, Drive-line and Hydraulic system

Standard configuration:



Hydraulic, independent extension:

Diameter of outrigger pads 24 in
Area of outrigger pads 254 in²



Tier 4i

Cummins QSB4.5 4 cylinders
Rated power 130 hp @ 2,200 rpm
Maximum gross torque 457 ft·lb @ 1,500 rpm
Intake: turbocharger with intercooler
Fuel type Ultra Low Sulfur Diesel (ULSD, max 15 ppm)
Fuel tank capacity 50 gallons

Tier 3

Cummins QSB4.5 4 cylinders
Rated power 130 hp @ 2,200 rpm
Maximum gross torque 457 ft·lb @ 1,500 rpm
Intake: turbocharger with intercooler
Fuel type Diesel
Fuel tank capacity 50 gallons



6 x 6 powershift transmission with integral torque converter

Full time 4WD (Four-Wheel Drive)
Rigid mounted front axle
Oscillating rear axle
Differential lock on front axle and rear axle
Rear axle oscillation lock – manual or automatic actuation
Air-over-hydraulic disc brakes
Parking brake on front axle
Hydraulic oil cooler on carrier

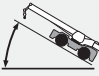



Hydraulic power steering



Front wheel steering
Four wheel steering concentric
Four wheel steering crab
Optional rear wheel steering package

| | | |
|----------------------------------|---------------------------------------|------------------------|
| HYDR | Hydraulic Pumps: | |
| | Tandem pumps: | |
| | Boom lift / Telescope | 39 gal/min @ 3,500 psi |
| | Power steering / Outriggers and Swing | 21 gal/min @ 2,500 psi |
| | Single pump: | |
| | Main and auxiliary hoist pump | 53 gal/min @ 3,500 psi |
| Hydraulic oil reservoir capacity | | 94 gallons |
| Hydraulic oil suction filter | | 250 microns |
| Hydraulic oil return filter | | 5 microns |

Vehicle performance

| | | |
|---|------------------------------|----------|
| Standard configuration: | | |
|  | Max. in 1 st gear | 112 % |
| | Max. in 6 th gear | 3 % |
|  | Max. (6 th gear) | 24.5 mph |

Tires

| | | |
|---|-------------------------------------|------------------|
| Standard configuration: | | |
|  | Wide tread earth mover pattern (E3) | 20.5 x 25-24 PR |
| Optional configuration: | | |
|  | Wide tread earth mover pattern (E3) | 16.00 x 25-28 PR |
| | Spare wheel | 20.5 x 25-24 PR |

A large rectangular area with a light gray background and horizontal white lines, intended for taking notes.

A large rectangular area consisting of 20 horizontal grey lines, serving as a template for handwritten notes.

Effective Date: November 2013.

Product specifications and prices are subject to change without notice or obligation. The photographs and/or drawings in this document are for illustrative purposes only. Refer to the appropriate Operator's Manual for instructions on the proper use of this equipment. Failure to follow the appropriate Operator's Manual when using our equipment or to otherwise act irresponsibly may result in serious injury or death. The only warranty applicable to our equipment is the standard written warranty applicable to the particular product and sale and Terex makes no other warranty, express or implied. Products and services listed may be trademarks, service marks or trade-names of Terex Corporation and/or its subsidiaries in the USA and other countries. All rights are reserved. Terex® is a registered trademark of Terex Corporation in the USA and many other countries.

Copyright Terex Cranes 2013

Terex Cranes, Global Marketing, Dinglerstraße 24, 66482 Zweibrücken, Germany
Tel. +49 (0) 6332 830, Email: info.cranes@terex.com, www.terexcranes.com



www.terexcranes.com

Brochure Reference: TC-DS-I-E-RT230XL-11/13



TEREX®

WORKS FOR YOU.™

Courtesy of Crane.Market