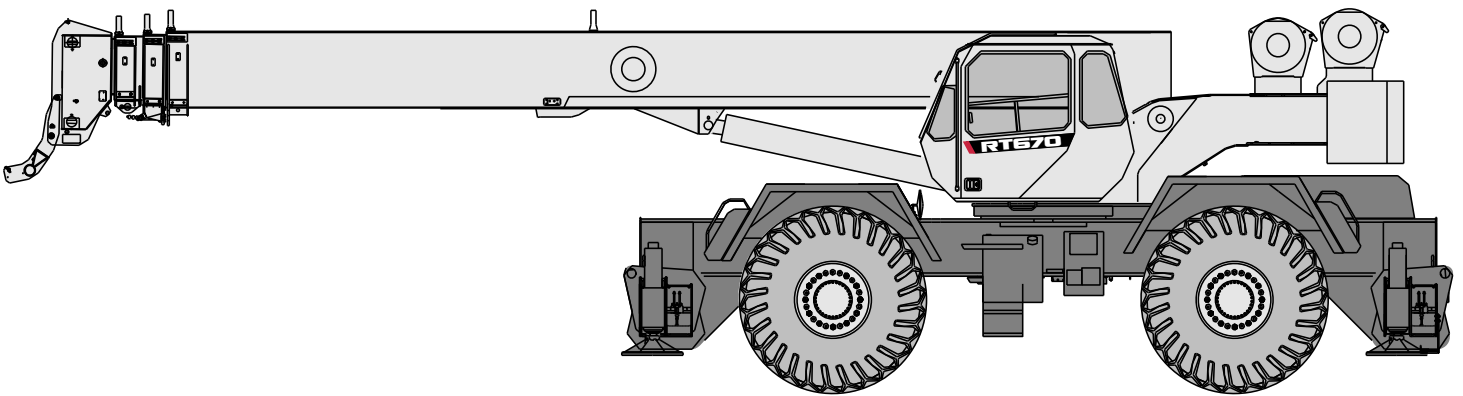




RT670 | Rough Terrain Crane 70 US ton Lifting Capacity



IMPERIAL

RT670

ROUGH TERRAIN CRANE

Courtesy of Crane.Market

CONTENTS

	Page:
Key	
.....	3
Dimensions	
Crane dimensions	5
Transport dimensions	5
Crane weights	6
Steering dimensions	7
Load charts	
Range graph main boom	8
Load chart main boom	9
Load chart pick & carry	11
Range graph jibs	12
Load chart jibs	13
Technical description	
Boom	14
Winch, rope and hook	14, 15
Upper structure	15
Cab, controls and safety devices	15
Understructure, engine, drive-line and hydraulic	16
Vehicle performances	16
Tires	16
Other optionals	16

KEY			
	Counterweight		General performance
	Main boom		Telescoping mode
	Boom length		Boom elevation angle
	Tip height		Working radius
	Boom with extension		Max. boom length with extension
	Main boom with aux head		Distance from the hook to the head sheave axle
	Slewing / Allowable slewing range		Slewing locked / Slewing locked at specified position
	Slewing brake		Slewing gears
	Outriggers / Lifting on outriggers (100/50/0% extended)		Lifting on wheels / Pick & Carry
	Main winch		Auxiliary winch
	Winch speed		Rope length
	Rope - Standard / Optional		Max. line pull
	Rope diameter		Tires
	Hook block		Controls
	Cab		Engine
	Load limiter / Load indicator		Steering
	Mechanical transmission		Speed
	Hydraulics		Heating / Air conditioning
	Working temperature		Gradeability
	Lights		Gross vehicle weight
	Crane / Crane in standard configuration		Weight on front axle
	Crane without counterweight		Weight on rear axle

HIGHLIGHTS

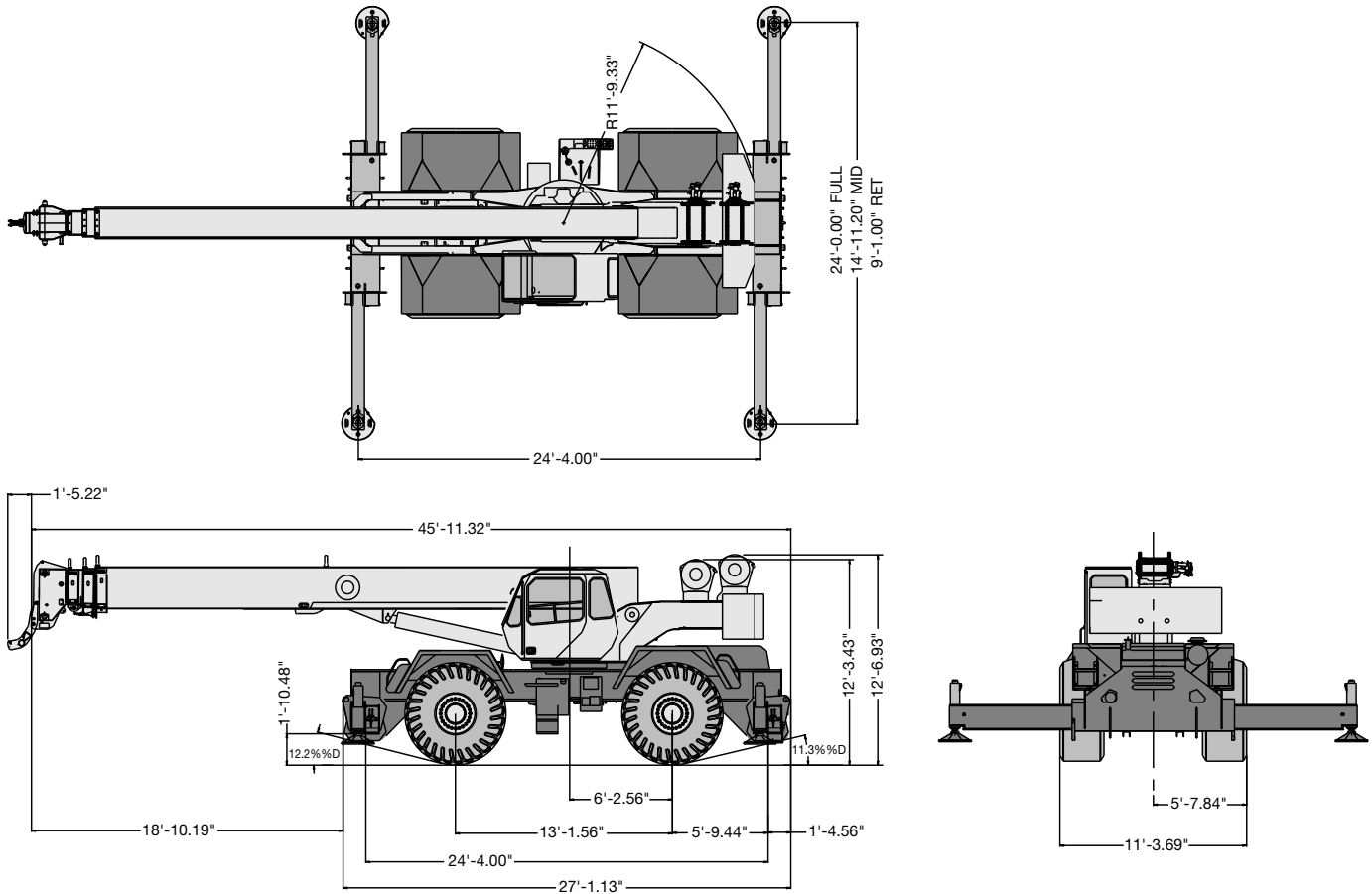
RT670

HIGHLIGHTS

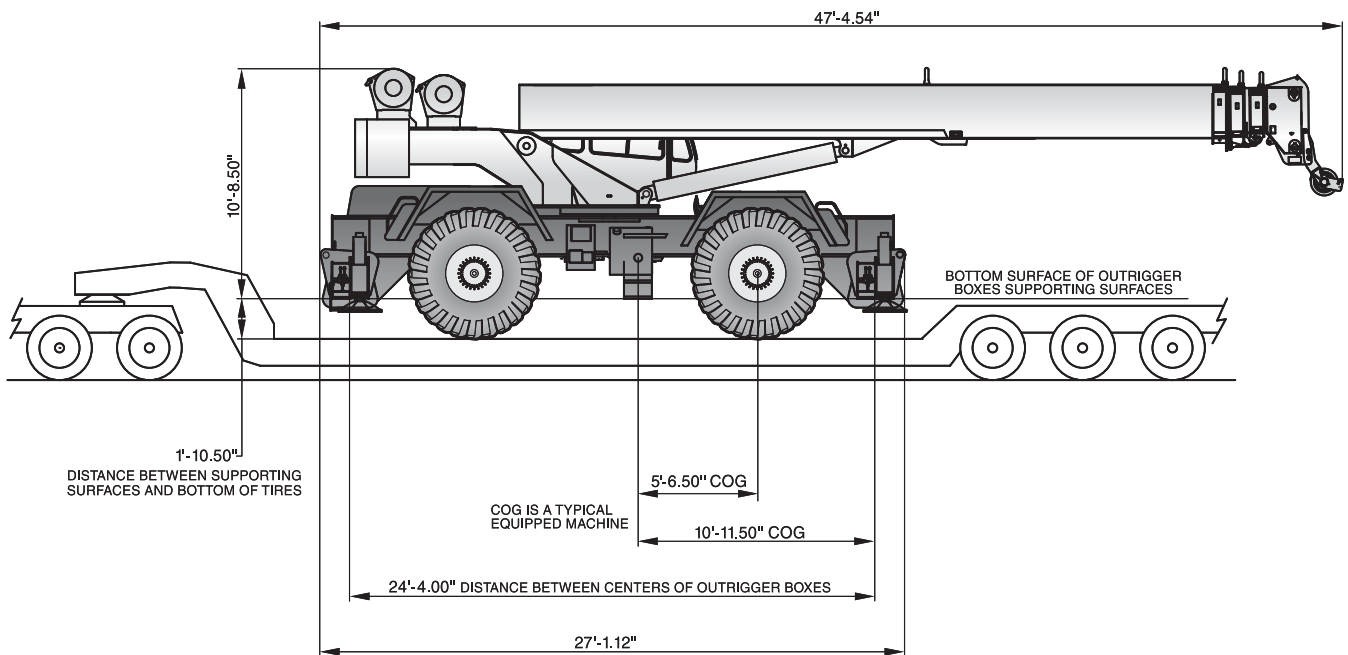
- Rated capacity:
70 ton @ 9 ft
- Maximum boom length:
111 ft
- Maximum hook height:
164 ft




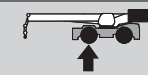
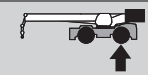






CRANE DIMENSIONS



TRANSPORT DIMENSIONS



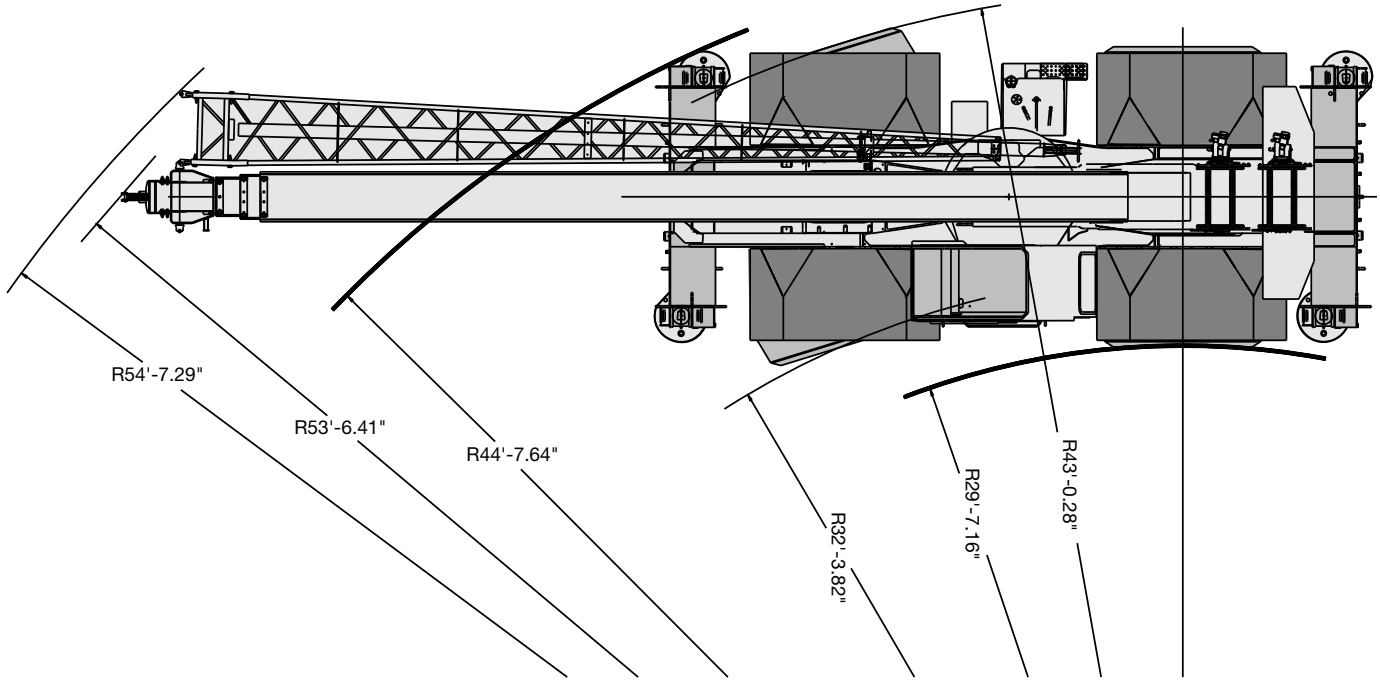
CRANE WEIGHTS
WEIGHTS

				
		85694 lb	45238 lb	40456 lb
	Stowed aside the boom: 32 ft	+ 1270 lb	+ 2205 lb	- 935 lb
	Stowed aside the boom: 32-57 ft	+ 2170 lb	+ 3580 lb	- 1410 lb
		+ 125 lb	+ 365 lb	- 240 lb
	2 With optional rope	+ 584 lb	- 30 lb	+ 614 lb
	5 sheaves, 75 ton	+ 1040 lb	+ 1972 lb	- 931 lb
	5 sheaves, 60 ton	+ 1024 lb	+ 2233 lb	- 1029 lb
	Hook ball, 12 ton	+ 722 lb	+ 749 lb	- 27 lb

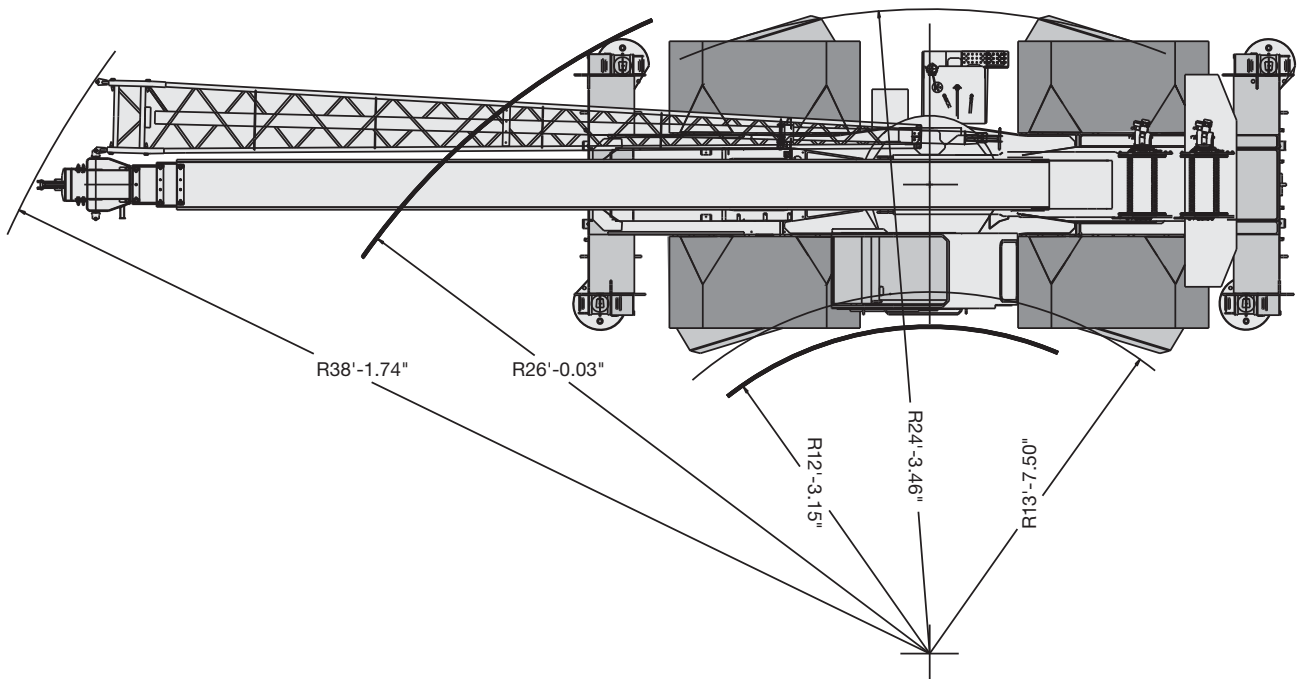
Weights are for Terex supplied equipment and are subject to 2% variation due to manufacturing tolerances.

STEERING DIMENSIONS

TWO WHEEL STEER

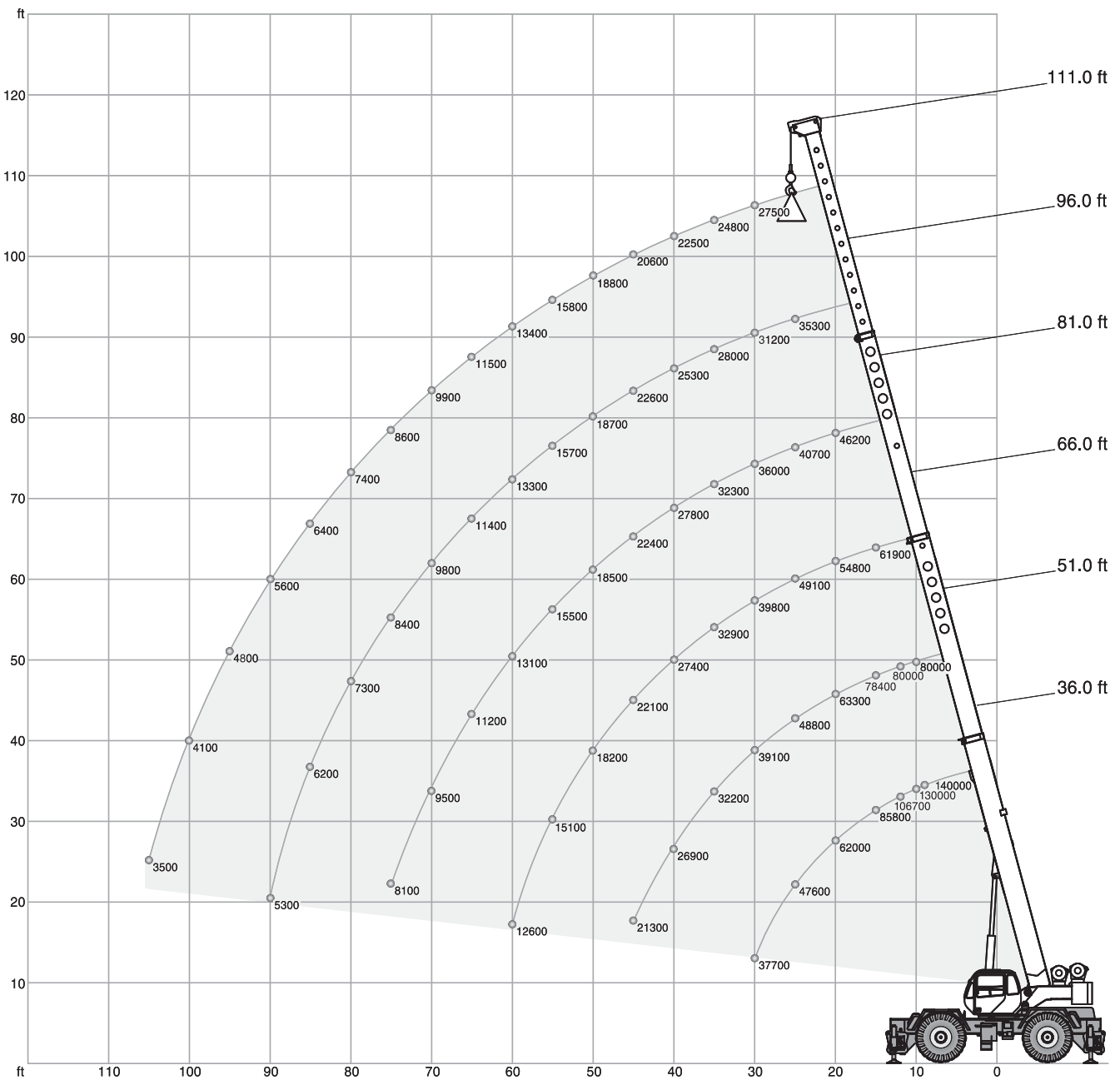


FOUR WHEEL STEER

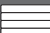








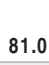




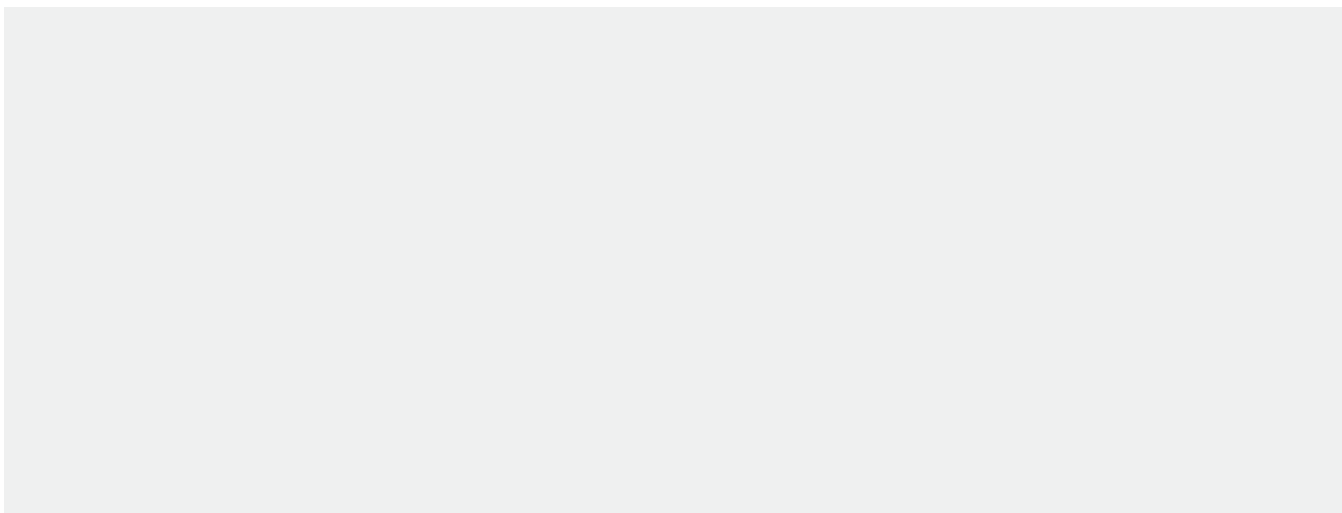
with hook ball: 4.7 ft
with hook block: 6.8 ft





 7.1 ton
  24 ft x 24.3 ft
  360°
 AMERICAN STANDARD ASME B30.5

							
ft	36.0 ft	51.0 ft	66.0 ft	81.0 ft	96.0 ft	111.0 ft	ft
9	140000	-	-	-	-	-	9
10	130000	80000	-	-	-	-	10
12	106700	80000	-	-	-	-	12
15	85800	78400	61900	-	-	-	15
20	62000	63300	54800	46200	-	-	20
25	47600	48800	49100	40700	35300	-	25
30	37700	39100	39800	36000	31200	27500	30
35	-	32200	32900	32300	28000	24800	35
40	-	26900	27400	27800	25300	22500	40
45	-	21300	22100	22400	22600	20600	45
50	-	-	18200	18500	18700	18800	50
55	-	-	15100	15500	15700	15800	55
60	-	-	12600	13100	13300	13400	60
65	-	-	-	11200	11400	11500	65
70	-	-	-	9500	9800	9900	70
75	-	-	-	8100	8400	8600	75
80	-	-	-	-	7300	7400	80
85	-	-	-	-	6200	6400	85
90	-	-	-	-	5300	5600	90
95	-	-	-	-	-	4800	95
100	-	-	-	-	-	4100	100
105	-	-	-	-	-	3500	105
110	-	-	-	-	-	-	110



NOTES TO LIFTING CAPACITY

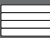


Lifting capacities do not exceed 85% of tipping load.




Weight of hook blocks and slings is part of the load, and is to be deducted from the capacity ratings.

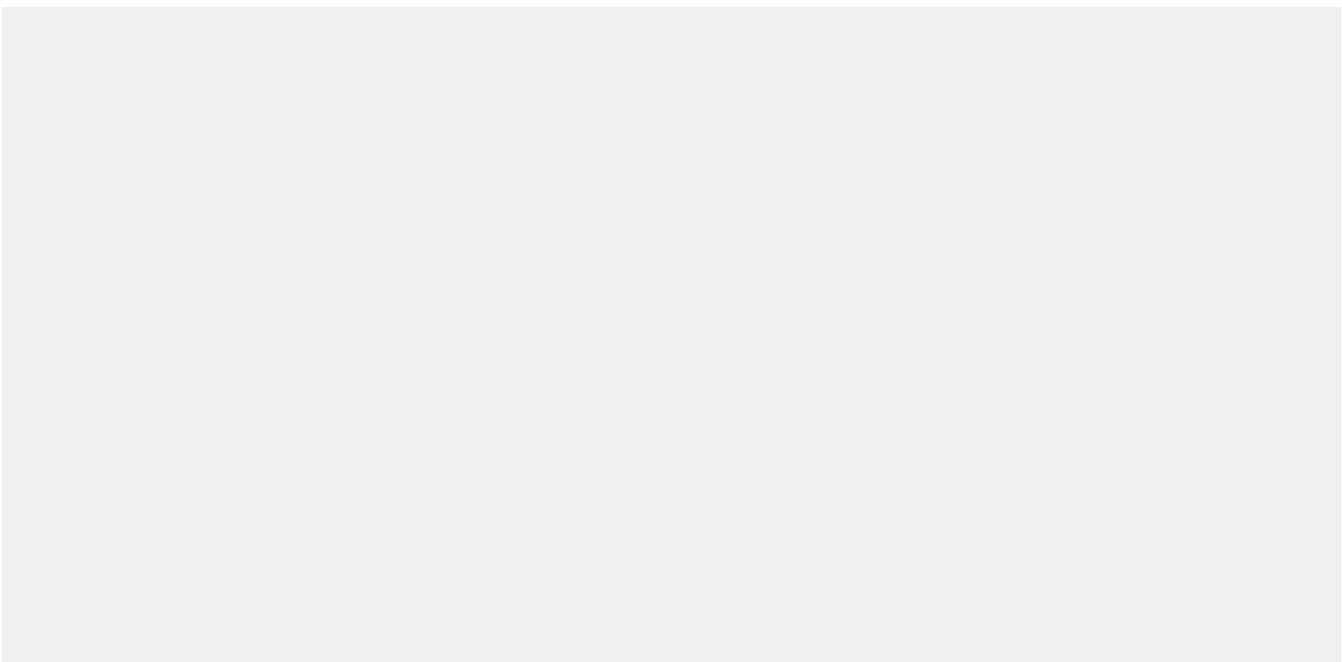
Consult operation manual for further details.

Note: Data published herein is intended as a guide only and shall not be construed to warrant applicability for lifting purposes. Crane operation is subject to the computer charts and operation manual both supplied with the crane.



 7.1 ton
  14.9 ft x 24.3 ft
  360°
 AMERICAN STANDARD ASME B30.5

			36.0 ft	51.0 ft	66.0 ft	81.0 ft	96.0 ft	111.0 ft	
ft									ft
9			-	-	-	-	-	-	9
10			121100	80000	-	-	-	-	10
12			106700	80000	-	-	-	-	12
15			85900	78400	61900	-	-	-	15
20			48700	49800	50300	46200	-	-	20
25			31200	32600	33100	33400	33600	-	25
30			21700	23300	23800	24100	24300	24400	30
35			-	17400	18000	18200	18400	18500	35
40			-	13200	14000	14200	14400	14500	40
45			-	10200	11000	11300	11500	11600	45
50			-	-	8700	9100	9300	9400	50
55			-	-	6900	7300	7500	7700	55
60			-	-	5300	5800	6100	6200	60
65			-	-	-	4600	4900	5100	65
70			-	-	-	3600	3900	4100	70
75			-	-	-	2700	3000	3200	75
80			-	-	-	-	2300	2500	80



NOTES TO LIFTING CAPACITY

Lifting capacities do not exceed 85% of tipping load.


Weight of hook blocks and slings is part of the load, and is to be deducted from the capacity ratings.

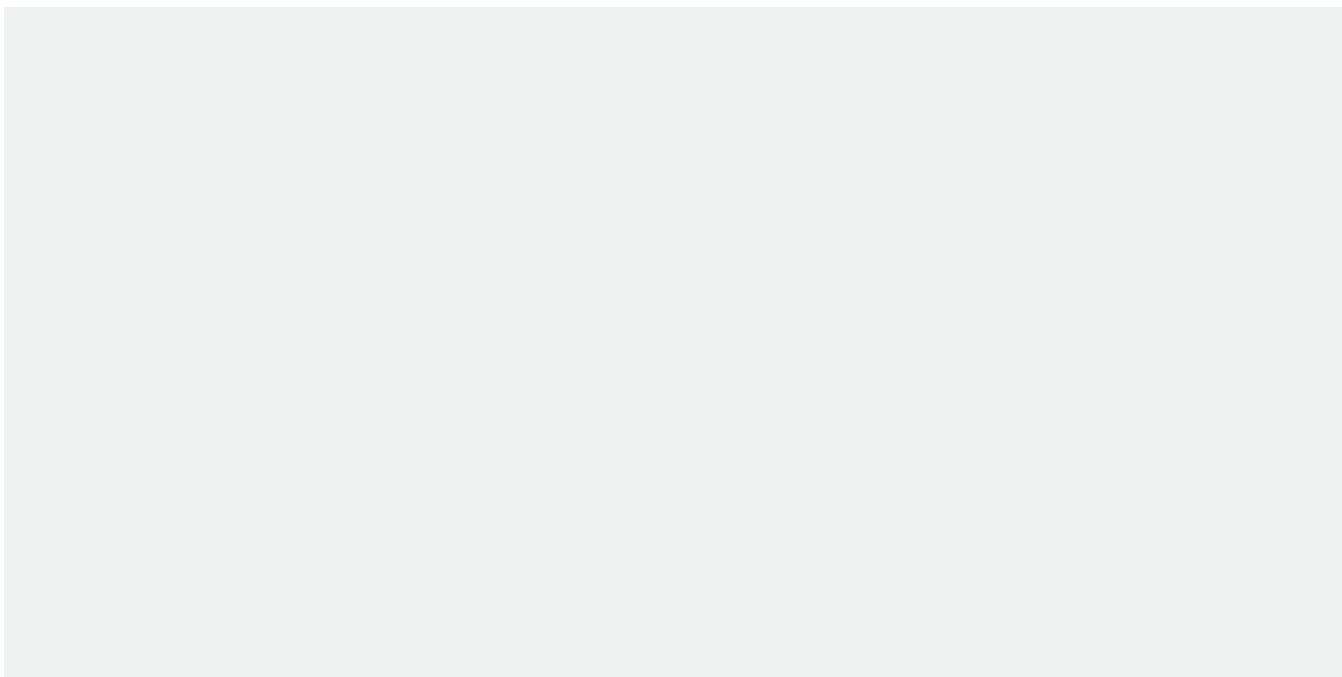
Consult operation manual for further details.

Note: Data published herein is intended as a guide only and shall not be construed to warrant applicability for lifting purposes. Crane operation is subject to the computer charts and operation manual both supplied with the crane.



7.1 ton 0° AMERICAN STANDARD ASME B30.5

ft	 (mph)			ft
	0	creep	2.5	
10	55600	68700	51800	36
12	42700	60400	45300	36
15	29400	50700	37600	36
20	17500	37200	28700	36
25	11700	22500	22500	51
30	7900	15600	15600	51
35	5600	12600	12600	51
40	4000	10100	10100	51
45	2800	8000	8000	66
50	1800	6400	6400	66
55	-	5100	5100	66
60	-	4100	4100	81
65	-	3300	3300	81
75	-	2600	2600	81
80	-	-	-	-



NOTES TO LIFTING CAPACITY

Lifting capacities do not exceed 85% of tipping load.

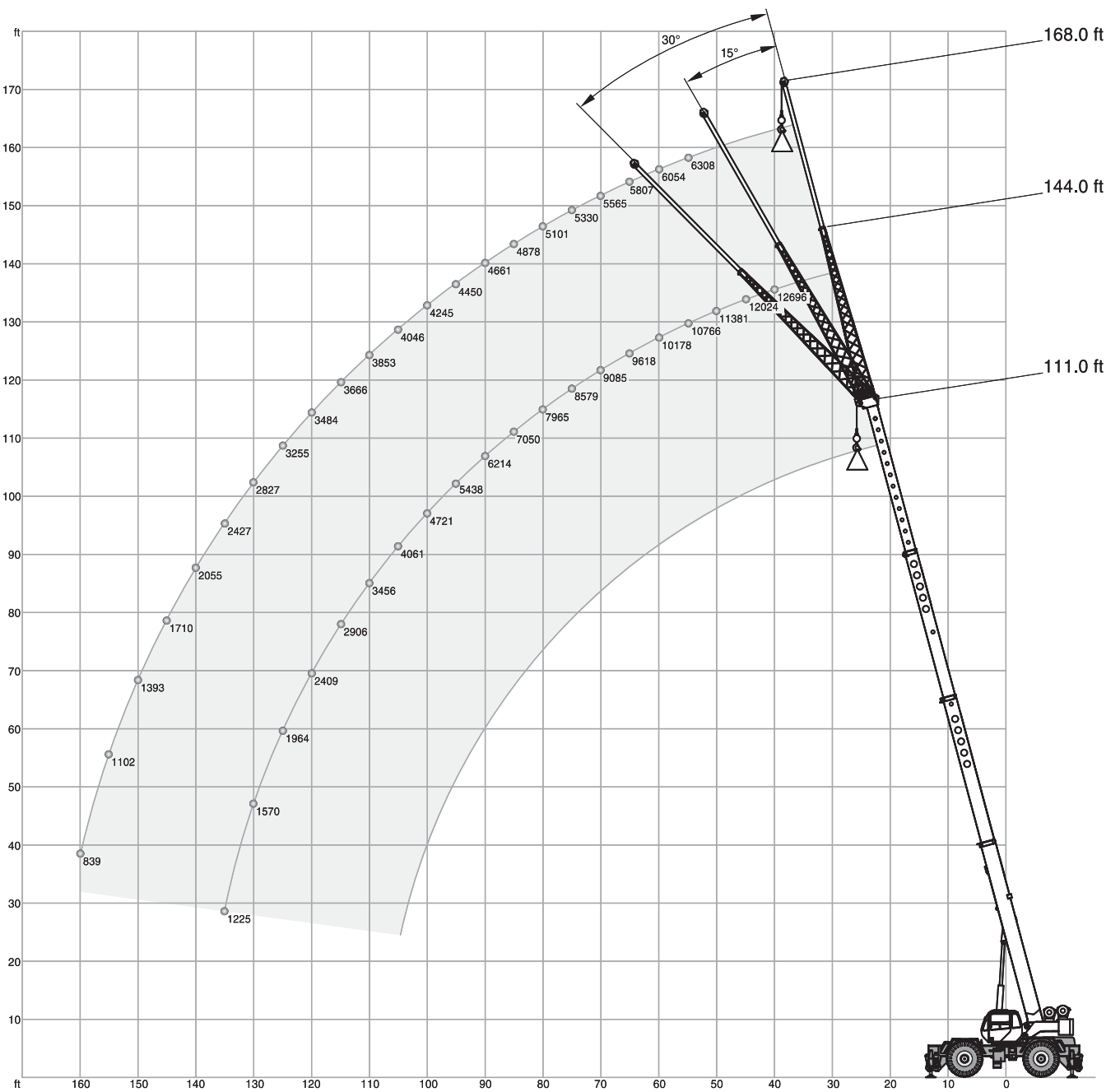
Weight of hook blocks and slings is part of the load, and is to be deducted from the capacity ratings.

Consult operation manual for further details.




Note: Data published herein is intended as a guide only and shall not be construed to warrant applicability for lifting purposes. Crane operation is subject to the computer charts and operation manual both supplied with the crane.



with hook ball: 4.7 ft
with hook block: 6.8 ft

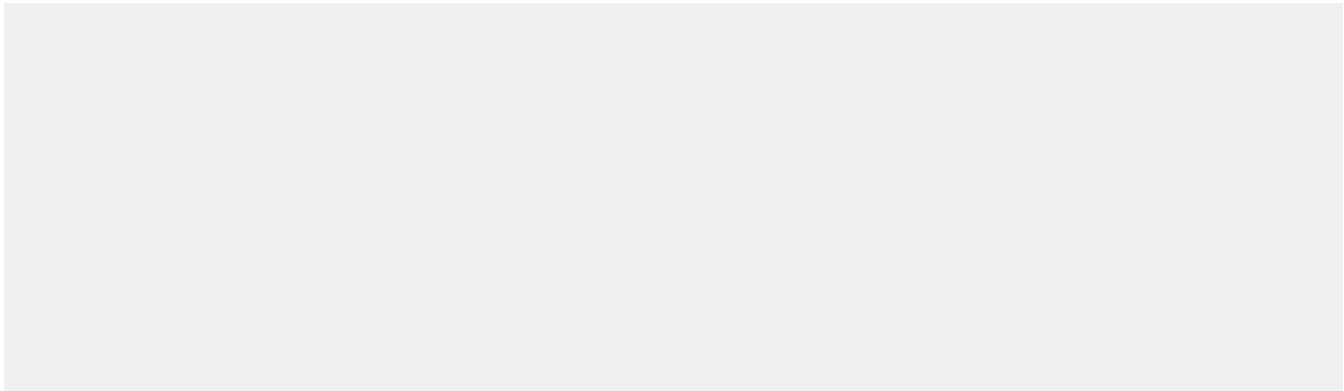




 7.1 ton
  24 ft x 24.3 ft
  360°
 AMERICAN STANDARD ASME B30.5

 111 ft

ft	0°	32 ft		33 ft			57 ft			ft
		15°	30°	0°	15°	30°	0°	15°	30°	
40	12572	-	-	12696	-	-	-	-	-	40
45	11892	-	-	12024	-	-	-	-	-	45
50	11246	8340	-	11381	8340	-	-	-	-	50
55	10632	7982	6459	10766	7984	6500	6308	-	-	55
60	10052	7665	6278	10178	7665	6305	6054	-	-	60
65	9504	7377	6108	9618	7375	6142	5807	4475	-	65
70	8988	7111	5948	9085	7107	5988	5565	4282	-	70
75	8504	6861	5796	8579	6858	5836	5330	4102	3291	75
80	8050	6625	5649	7965	6624	5685	5101	3935	3195	80
85	7797	6400	5509	7050	6402	5535	4878	3780	3105	85
90	6893	6182	5372	6214	6190	5386	4661	3635	3021	90
95	6080	5972	5240	5438	5673	5237	4450	3500	2942	95
100	5346	5780	5111	4721	5003	5000	4245	3374	2869	100
105	4682	5140	4985	4061	4370	4607	4046	3256	2801	105
110	4079	4531	4550	3456	3775	3978	3853	3146	2738	110
115	3530	3954	3967	2906	3216	3384	3666	3043	2681	115
120	3029	3407	3383	2409	2694	2798	3484	2946	2628	120
125	2571	2890	2800	1964	2208	2217	3255	2856	2581	125
130	2152	2404	-	1570	1758	-	2827	2772	2539	130
135	1768	1947	-	1225	1343	-	2427	2700	2501	135
140	-	-	-	-	-	-	2055	2267	2469	140
145	-	-	-	-	-	-	1710	1874	2012	145
150	-	-	-	-	-	-	1393	1497	1483	150
155	-	-	-	-	-	-	1102	1135	-	155
160	-	-	-	-	-	-	839	786	-	160



NOTES TO LIFTING CAPACITY

Lifting capacities do not exceed 85% of tipping load.

Weight of hook blocks and slings is part of the load, and is to be deducted from the capacity ratings.






Consult operation manual for further details.

Note: Data published herein is intended as a guide only and shall not be construed to warrant applicability for lifting purposes. Crane operation is subject to the computer charts and operation manual both supplied with the crane.







TECHNICAL DESCRIPTION

BOOM

Standard configuration:


	4 sections full power	
	Fully synchronized	
	Min. / Max.	36 ft / 111 ft
	Max. main boom	115 ft
	Boom elevation angle range (min. / max.)	-4° / +76°
	Boom raising / lowering time	54 s / 50 s
	Boom extension / retraction time	87 s / 70 s
	Single sheave	
	Max. tip height	126 ft

Optional:

	Lattice type, side stow Angular offsets	32 ft 0° / 15° / 30°
	Max. with 32 ft jib	143 ft
	Max. with 32 ft jib	146 ft
	Lattice type with pullout extension, side stow with (pullout retracted / pullout extended) Angular offsets	33 ft / 57 ft 0° / 15° / 30°
	Max. with 33 ft jib	144 ft
	Max. with 33 ft jib and pullout extended	168 ft
	Max. with 33 ft jib	147 ft
	Max. with 33 ft jib and pullout extended	170 ft

WINCH, ROPE AND HOOK

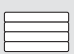



Standard configuration:

	Two speeds Grooved drum Storage capacity	561 ft
	Maximum without load	431 ft / min
	Two speeds Grooved drum Storage capacity	561 ft
	Maximum without load	431 ft / min
	Type: IWRC, XIPS, right regular layer	





TECHNICAL DESCRIPTION

		0.75 in
		600 ft
	Minimum breaking strength Max. line pull permissible	58800 lb 13800 lb
Optional:		
	Type: rotation resistant compacted strand 34 x 7 grade 1960	
		0.75 in
		600 ft
	Minimum breaking strength Max. line pull permissible	70800 lb 13800 lb
	5 sheaves 5 sheaves	60 ton 75 ton

UPPER STRUCTURE

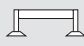
Standard configuration:		
	Weight	7.1 ton
	Non stop Maximum speed without load	360° 1.9 rpm
	Hydraulic motor Planetary reducer	
	Foot pedal actuated Possibility to set up a partial and constant braking force	


CAB, CONTROLS AND SAFETY DEVICES


Standard configuration:		
	Sliding door on the left side Sliding window on the right side Tilting skylight glass hinged tinted Removable front windshield Six ways adjustable seat	
	Armrest mounted dual axis electro-proportional joysticks Controls for winch and winch rotation indicator, slewing, boom elevation Foot controls for boom telescoping, swing brake and engine throttle Dashboard mounted switches for steering mode, outriggers	
	Electronic load indicator and limiter with graphic interface	
Optional:		
	Hydraulic driven heater and defroster Hydraulic driven heater / AC and defroster LP auxiliary heater	


TECHNICAL DESCRIPTION

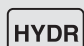
UNDERSTRUCTURE, ENGINE, DRIVE-LINE AND HYDRAULIC


	Standard configuration:	
	Hydraulic independent:	
	100 % extended outrigger footprint area	583 ft ²
	50 % extended outrigger footprint area	362 ft ²
	0 % extended outrigger footprint area	220.7 ft ²
	Floating ground bearings diameters (area)	9 in (254 in ²)
	Single outrigger jack extending and retracting time	9 s
Single outrigger beam extending and retracting time	15 s	
Access steps to the deck from any side		


	Cummins QSC-300 6 cylinders	
	Rated power	215 HP @ 22500 rpm
	Maximum gross torque	655 ft-lb @ 1500 rpm
	Intake: turbocharged with intercooler Diesel	
	Fuel type	Diesel
	Fuel tank capacity	50 gallons

	6 x 6 powershift with torque converter	
	4WD if traveling when low range is engaged	
	Rigid mounted front axle	
	Oscillating mounted rear axle	
	Automatic rear axles oscillation lock when superstructure is swung by 10° from centerline in either directions	
	Air over hydraulic service brake	


	3 modes hydraulic power steering	
	Front wheels mode – minimum steering curb clearance radius	43 ft
	All wheels concentric steering mode – minimum steering curb clearance radius	24.3 ft
	All wheels crab steering mode	


	Gear pump for main and auxiliary winch	
	Gear pump for boom hoisting and telescoping	
	Gear pump for steering, outriggers and slewing	
	Hydraulic oil tank capacity	116 gallons
	Hydraulic oil filters	250 µm


	Optional:	
	Cold environment kit	

	Optional:	
	4 th steering mode: rear wheel steer	

VEHICLE PERFORMANCES

	Standard configuration:	
	Max. in 1 st gear	127.6 %
	Max. in 6 th gear	5.9 %

	Max. (6 th gear)	23.4 mph
---	-----------------------------	----------

	Max.	+ 125 °F
	Min.	-20 °F

TIRES

	Standard configuration:	
	Wide earth moving style thread (E3)	29.5 x 25 28PR

OTHER OPTIONALS

- Revolving amber light (1 light mounted on the cab)
- Yellow strobe light (1 light mounted on the cab – used in place of revolving amber light)
- Work light package (3 lights mounted on the base of the boom, front of the cab, and superstructure)
- 360-degree spotlight
- Tire inflation kit
- Mirror for viewing hoist
- Battery disconnect switch
- Front and / or rear pintle hook
- Special paint



Developed by Global Marketing

Terex Cranes

Global Marketing

Dinglerstraße 24

66482 Zweibrücken

Germany

Tel. +49 (0) 6332 830

Email info.cranes@terex.com

www.terexcranes.com

YOUR CONTACT INFORMATION

Effective Date: February 2010. Product specifications and prices are subject to change without notice or obligation. The photographs and/or drawings in this document are for illustrative purposes only. Refer to the appropriate Operator's Manual for instructions on the proper use of this equipment. Failure to follow the appropriate Operator's Manual when using our equipment or to otherwise act irresponsibly may result in serious injury or death. The only warranty applicable to our equipment is the standard written warranty applicable to the particular product and sale and Terex makes no other warranty, express or implied. Products and services listed may be trademarks, service marks or trade-names of Terex Corporation and/or its subsidiaries in the USA and other countries. All rights are reserved. Terex® is a registered trademark of Terex Corporation in the USA and many other countries.