



PRODUCT RANGE

SITE DUMPERS



LEADING THE FIELD

In a class of their own

With over sixty year's design and manufacturing expertise, Terex® site dumpers are created from generations of hard work in the toughest conditions. They're rugged, robust machines that are "rental tough" and get the job done.

Easy to operate and maintain with unrivalled strength and reliability, Terex site dumpers provide increased uptime at a reduced cost. With class leading skip strengths, strong chassis designs and user friendly controls, it's easy to see why the Terex site dumper is the first choice for material movement and tipping on any site.

The range of Terex site dumpers offers three types of skip configurations:

Terex Power Swivel site dumpers offer the ability to tip the skip forward or through 90 degrees to each side of the machine.

Terex Power Tip site dumpers feature a forward tipping mechanism designed for accurate placement of high volume materials.

Terex High Discharge site dumpers provide the ability to raise the skip to over 1.5 metres and tip over obstacles into skips.

We are committed to enhancing your profitability, that's why we focus on uptime and productivity. You need a site dumper that just keeps going, no matter what and no matter where. With a Terex site dumper you get that plus a low cost of ownership and strong residual values.

From 850 kilos up to 10 tonne payloads, the extensive line up of Terex site dumpers offers the perfect fit for your needs.



MORE THAN JUST A DUMPER

High performance and reliable water cooled diesel engines for smooth and economical operation

Large opening service doors for best in class service access

Transmissions that provide optimum power transfer

High performance braking with oil immersed disc brakes





Folding ROPS as standard on all models for ease of transportation

Simple dashboard designed for operator comfort and ease of use

Large skip capacities move more material per load

Wide range of tip types enable the right machine to be selected for the job

Heavy duty chassis fabrications and centre articulation and oscillation for high strength and reliability on the toughest work sites

Superb off road performance with high ground clearance for site accessibility

POWERFUL PERFORMERS

High and mighty

Terex Power Tip site dumpers are designed with one thing in mind – to move as much bulk material as speedily, safely and economically as possible.

With an impressive displacement option ranging from 2 tonnes up to a mighty 10 tonnes, these “rental tough” machines deliver outstanding power and performance.

All Power Tip machines are equipped with heavy duty, damage resistant articulated chassis and skips.

Speed and power

All Terex site dumper skips provide excellent longevity for increased uptime and productivity. The latest designs deliver superior strength via the thick steel side walls and heavy duty steel front and base plates.

The forward tipping mechanism is designed to allow for smooth accurate placement of high volume materials.

What this means for you

- ▶ Large heaped skip capacities up to 5,050 litres
- ▶ Rental – proof designs to keep you working in the toughest of conditions
- ▶ High ground clearance, low centre of gravity for superb stability and site accessibility
- ▶ Exceptional service access for ease of maintenance







SMOOTH MOVERS

Increase your versatility

The Terex range of Power Swivel (swing tip) site dumpers adds another dimension to your job site versatility.

Power Swivel machines allow the load to be rotated through 90 degrees to each side of the machine and tipped. This makes these versatile machines the ideal choice for back filling trenches and working within a confined site area.

With payload options ranging between 2 to 6 tonnes with Terex Power Swivel site dumpers your job site flexibility is much enhanced. The high quality slew ring bearings enable Terex Power Swivel site dumpers to provide ease of operation as well as smooth movement in the precision placement of loads.

Safe and secure

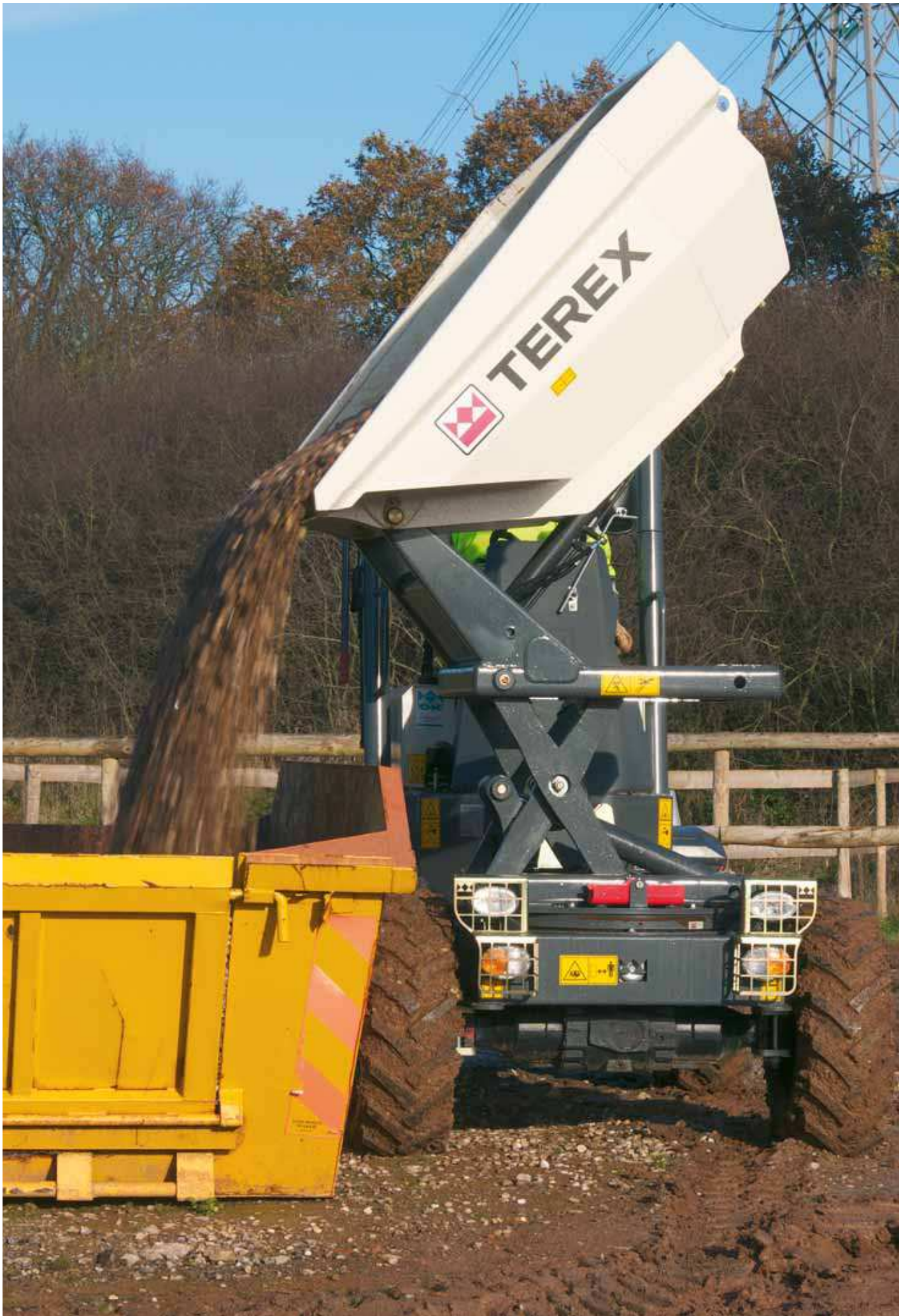
All Power Swivel site dumpers feature a heavy duty swing tip locking device which locks the skip in the straight ahead position whilst on the move.

Intelligent design means full protection is given to hose routings and hydraulics without compromising on access for routine maintenance.

What this means for you

- ▶ Large heaped skip capacities for high productivity
- ▶ Impressive turning radius for precision and efficiency
- ▶ Environmentally friendly engines delivering superb power management
- ▶ Power swivel skips enable effective placement of load either side
- ▶ High speed operation with full skip loads





HIGH ACHIEVER

Elevate your performance

The Terex range of High Discharge site dumpers is designed for superior versatility and performance when tipping over obstacles and into skips.

From 850kg up to 2,000kg, these machines are ideal for house building sites and landscaping environments or any job site with space restrictions.

All models deliver an impressive discharge height clearance of over 1.5 meters. Stability is provided by the robust chassis and skip design ensuring the unit remains well balanced and secure when tipping.

Fold down – move in

The folding ROPS enables high discharge dumpers to gain access into interior spaces. The smallest models in the range the TA0.8EH and TA1EH are capable of passing through a standard 1 meter doorway. All Terex High Discharge Dumpers offer 'Narrow Width' designs to increase their on-site access and maneuverability as well as increasing the range of transportation options.

What this means for you

- ▶ Operating payloads from 850 to 2000kg
- ▶ 1.5m minimum discharge height – can tip into standard skip
- ▶ Narrow design enables machines to pass through a standard 1m doorway TA0.8EH and TA1EH only when fitted with optional narrow tyres



SITE DUMPERS

TIPPING THE BALANCE

Rental tough means easy to maintain

To build a rental proof machine, service access is fundamental. All Terex site dumpers feature superb service access from ground level to facilitate ease of maintenance. The chassis and engine canopies are designed to give maximum access to all areas.

Engine panels are all mounted on heavy-duty hinges, which can be locked with high specification latches for added security.

Built for any conditions

As with all Terex site dumpers the high ground clearance makes operation on the roughest terrain possible. Designed to be rental tough the Terex site dumper just keeps on performing.

Large oscillation angles help to maximise wheel to ground contact. This means that greater traction is achieved resulting in excellent off – road performance and higher productivity.

Access all areas

In line with EU legislation, a folding ROPS frame is fitted as a standard on all Terex site dumpers.

In addition to providing protection for the operator, folding ROPS reduce the transportation height on larger models and enable smaller models to gain access into interior spaces.



SITE DUMPING JUST GOT EASIER

Total control at the flick of a switch

Terex site dumpers now feature hydrostatic transmissions – the latest technological innovation from Terex designed to enhance your productivity.

The hydrostatic system delivers smooth, uninterrupted power for the operator and high travel speed.

Simple user-friendly controls help all operators adapt quickly to the new hydrostatic driving experience

High performance – high output

This exciting new range has an exceptional off-road performance thanks to a high specification hydrostatic design that smoothly delivers power to the wheels for excellent ground holding and safety.

What this means for you

- ▶ Active Hydrostatic braking technology provides significant operational benefit when working on gradients
- ▶ No gear stick or clutch pedal ensures increased operator comfort levels and improved operator access
- ▶ Superb off road performance with maximum power transferred to the wheels
- ▶ Simple automotive style controls enable less experienced operators to use the machine



SPECIFICATIONS

PERFORMANCE

	TA0.8EH	TA1EH	TA1.2EH	TA2	TA2E	TA2S	TA2SE	TA2H	TA2EH	TA2SH	TA2SEH
Payload (Kg)	850	1000	1200	2000	2000	2000	2000	2000	2000	2000	2000
Unladen Weight (Kg)	1290	1310	1375	1898	1974	2016	2100	1964	2040	2082	2166
Tipping Type	Forward Tip - High Discharge	Forward Tip - High Discharge	Forward Tip - High Discharge	Forward Tip	Forward Tip - High Discharge	Swivel Tip	Swivel Tip - High Discharge	Forward Tip	Forward Tip - High Discharge	Swivel Tip	Swivel Tip - High Discharge
Skip Capacity - Water (litres)	280	320	390	750	750	750	750	750	750	750	750
Skip Capacity - Struck (litres)	400	450	560	1000	1000	1000	1000	1000	1000	1000	1000
Skip Capacity - Heaped (litres)	470	540	680	1200	1200	1200	1200	1200	1200	1200	1200
Engine	Kubota D905					Kubota D1703M					
- Number of Cylinders	3					3					
- Gross Power - kW (hp)	16.4 (22)					24.5 (32.6)					
- Displacement (cc)	898					1647					
- Maximum Torque (Nm)	50					105					
- Aspiration	Naturally Aspirated					Naturally Aspirated					
- Emission Compliance	EU Stage IIIA										

TRANSMISSION / DRIVE

Transmission Type	Hydrostatic Motor (Poclain Twinlock) to 4 Hydraulic Wheel Motors	Manual Gearbox via Transfer Box to Front & Rear Axles	Hydrostatic Motor via Transfer Box to Front & Rear Axles
Tyre Size	7.0 x 12 (option 10.0 / 75 x 15.3)	10.0 / 75 x 15.3 (option 7.0 x 12)	10.0 / 75 x 15.3 (10 ply)
Drive	Hydrostatic 1/1	Manual - 3 Forward / 1 Reverse	2 / 2 (High & Low Range - Forward & Reverse) Hydrostatic - Permanent 4WD
Max. Travel Speed - mph (kph)	6.8 (11.0)	11.8 (19.0)	10.0 (16.0)
Gradeability (Maximum Slope Gradient)	20% (1 in 5)	25% (1 in 4)	19.5% (1 in 5)

CAPACITIES

Fuel Tank Capacity (litres)	42	23
Hydraulic Tank Capacity (litres)	27	25

ENVIRONMENTAL

Noise Emission (to ISO 4871) - Sound Pressure (L _p AD)	80.2 dB	84.8 dB	86.1 dB
Noise Emission (to ISO 4871) - Sound Pressure (L _w AD)	101 dB	101 dB	101 dB
Noise Compliance	Noise - Equipment Used Outdoors Directive 2000/14/EC		
Vibration - Hand Arm (as defined in EN474-1 all operations)	<2.5 m/s ²		
Vibration - Whole Body (as defined in ISO/TR 25398 - Work Cycle)	0.529 rms (0.264 m/s ² Uncertainty)		

TA3	TA3S	TA3H	TA3SH	TA3.5SH	TA5	TA5S	TA6	TA6S	TA7	TA9	TA10
3000	3000	3000	3000	3500	5000	5000	6000	6000	7000	9000	10000
2280	2330	2290	2340	2340	4070	4215	4205	4240	4245	4875	4920

Forward Tip	Swivel Tip	Forward Tip	Swivel Tip	Swivel Tip	Forward Tip	Swivel Tip	Forward Tip	Swivel Tip	Forward Tip	Forward Tip	Forward Tip
1250	1000	1250	1000	1000	1620	1500	1950	1603	2100	2360	2490
1600	1520	1600	1520	1520	2450	2300	2740	2495	3020	4065	4140
1950	1880	1950	1880	1880	3100	2973	3780	3245	3850	4560	5050

Kubota V2203M				Perkins 1104D-44T							
4				4							
32.4 (43.5)				62.5 (84)				74.5 (100)			
2197				4400							
147				353				393			
Naturally Aspirated				Turbocharged							

EU Stage IIIA

Manual Gearbox via Transfer Box to Front & Rear Axles	Hydrostatic Motor via Transfer Box to Front & Rear Axles	Powershuttle via Transfer Box to Front & Rear Axles	
11.5 / 80 x 15.3 (14 ply)	12.0 x 18 (12 ply)	405/70 - 20 - 14PR	500/60 x 22.5 (16 ply) High Flotation
Manual - 3 Forward / 1 Reverse	2 / 2 (High & Low Range - Forward & Reverse) Hydrostatic - Permanent 4WD	4 / 4 Forward and Reverse - Permanent 4WD	
11.8 (19.0)	15.5 (25.0)	16.8 (27.0)	17.4 (28.0)
25% (1 in 4)	25% (1 in 4)	20% (1 in 5)	

37	67	64
37	50	71

84 dB	84 dB	84 dB	86 dB
101 dB	101 dB	101 dB	102 dB

Noise - Equipment Used Outdoors Directive 2000/14/EC

<2.5 m/s²

0.529 rms (0.264 m/s² Uncertainty)

BRAKING SYSTEM

	TA0.8EH	TA1EH	TA1.2EH	TA2	TA2E	TA2S	TA2SE	TA2H	TA2EH	TA2SH	TA2SEH
Working Brake	Hydrostatic Dynamic Braking on Rear Wheel Motors					Orbitrol hydrostatic steering unit powering central hydraulic steering ram					
Parking Brake	Hydrostatic Dynamic Braking on Rear Wheel Motors					Over Centre Handbrake - Oil Immersed Discs on Front Axle					

HYDRAULIC SYSTEM

Pump Type	Gear										
Flow Rate (l/min)	24					21					
Operating Pressure (bar)	130					210					
Steering System	Orbitrol hydrostatic steering unit powering central hydraulic steering ram					Orbitrol hydrostatic steering unit powering central hydraulic steering ram					

ELECTRICAL SYSTEM

Voltage (V)	12					12					
Battery (Ah)	74					74					
Alternator (A)	45					55					

DIMENSIONS

Total Length (mm)	2959	2959	2959	3570	3570	3550	3550	3570	3570	3550	3550
Total Width [Max] (mm)	998* / 1120	998* / 1120	1310	1492	1492	1492	1492	1492	1492	1492	1492
Wheelbase (mm)	1440	1440	1440	1900	1900	1900	1900	1900	1900	1900	1900
Ground Clearance (mm)	241	241	241	184	184	184	184	184	184	184	184
Height to Front Lip of Skip [untipped] (mm)	1175	1175	1175	1323	1454	1360	1522	1323	1454	1360	1522
Height to Front Lip of Skip [tipped] (mm)	1558 (raised)	1595 (raised)	1595 (raised)	916	1074 (lowered) / 1572 (raised)	983	1142 (lowered) / 1640 (raised)	916	1074 (lowered) / 1572 (raised)	983	1142 (lowered) / 1640 (raised)
Turning Radius to Outside of Skip (mm)	-	-	-	3680	3680	3680	3680	3680	3680	3680	3680
Steering Angle (degrees)	-	-	-	+/- 30.6							
Oscillation (degrees)	-	-	-	+/- 10.5							
Height to Top of ROPS [raised] (mm)	2483	2483	2483	2727 (+ 200 over beacon)							
Height to Top of Steering Wheel (mm)	1745	1745	1745	1937	1937	1937	1937	1937	1937	1937	1937

TA3	TA3S	TA3H	TA3SH	TA3.5SH	TA5	TA5S	TA6	TA6S	TA7	TA9	TA10
Orbitrol hydrostatic steering unit powering central hydraulic steering ram						Foot Brake - Oil immersed discs on front/rear					
Over Centre Handbrake - Oil Immersed Discs on Front Axle					Over Centre parking brake - dry disc in gearbox						

Gear											
			30						60		
172	210	172	210	210				172			

Orbitrol hydrostatic steering unit powering central hydraulic steering ram

				12				12			
				74				90			
				55				95			

3725	3952	3725	3952	3952	4270	4550	4320	4590	4320	4330	4420
1957	1846	1957	1846	1846	2250	2075	2350	2095	2500	2500	2550
1939	1939	1939	1939	1939	2450	2450	2450	2450	2450	2450	2450
279	279	279	279	279	308	308	380	380	380	410	410
1371	1467	1371	1467	1467	1500	1602	1630	1671	1630	1722	1760
208	762	208	762	762	365	1160	360	1229	360	430	440
4711	4553	4711	4553	4553	5400	5660	5600	5730	5600	6000	6017
				+/- 30				+/- 30			
				+/- 10.5				+/- 10.5			
				2690 (+ 230 over beacon)				2835 2835 2910 2910 2910 3342 3375			
1862	1862	1862	1862	1862	2070	2070	2160	2160	2160	2530	2630

STANDARD EQUIPMENT AND OPTIONS

	TA0.8EH	TA1EH	TA1.2EH	TA2	TA2E	TA2S	TA2SE	TA2H	TA2EH	TA2SH	TA2SEH
Folding ROPS Frame		Standard							Standard		
Reversing Alarm		Standard							Standard		
Flashing Beacon		Standard							Standard		
Leg Guard		Option							Standard		
Towing/Recovery Bracket		-							Standard		
Hour Meter						Standard					
Road Lights (RTA) including Front Light Guards		Option							Option		
Rear View Mirror						Option (standard in some markets - check with your local Terex Dealer)					
KOSRAN Anti-Theft Immobiliser							Option				
CESAR Datatag Security							Option				
Spare Wheel							Option				
Fan Guard		-				Option (standard in some markets - check with your local Terex Dealer)					
Special Paint							Option				
Seat Belt (Orange)							Standard				
Seat (adjustable fore/aft, operator weight and back angle)							Standard				
Heavy Duty Articulation Lock							Standard				
Narrow Tyres (7.00 x 12)	Standard	Option	-	-	-	-	-	-	-	-	-
Wide Tyres (10.0 / 75 x 15.3)	Option	Standard	Standard	-	-	-	-	-	-	-	-
Turf Tyres	-	-	-						Option		

TA3	TA3S	TA3H	TA3SH	TA3.5SH	TA5	TA5S	TA6	TA6S	TA7	TA9	TA10
					Standard						
					Standard						
					Standard						
		Standard			Option (standard in some markets - check with your local Terex Dealer)					-	-
					Standard						
					Standard						
					Option						
					Option (standard in some markets - check with your local Terex Dealer)						
					Option						
					Option						
					Option (standard in some markets - check with your local Terex Dealer)					-	-
					Option						
					Standard						
					Standard						
					Standard						
-	-	-	-	-	-	-	-	-	-	-	-
-	-	-	-	-	-	-	-	-	-	-	-
-	-	Option	Option	-	-	-	Option	Option	-	-	-

www.terexconstruction.com

Effective Date: November 2012. Product specifications and prices are subject to change without notice or obligation. The photographs and/or drawings in this document are for illustrative purposes only. Refer to the appropriate Operator's Manual for instructions on the proper use of this equipment. Failure to follow the appropriate Operator's Manual when using our equipment or to otherwise act irresponsibly may result in serious injury or death. The only warranty applicable to our equipment is the standard written warranty applicable to the particular product and sale and Terex makes no other warranty, express or implied. Products and services listed may be trademarks, service marks or trade-names of Terex Corporation and/or its subsidiaries in the USA and other countries. All rights are reserved. Terex is a registered trademark of Terex Corporation in the USA and many other countries. © 2013 Terex Corporation. (R2_200312)

Ref. n°: TEREX513EN

Central Boulevard, ProLogis Park
Coventry, England CV6 4BX
Tel +44 (0) 2476 339400
Email: construction@terex.com www.terex.com



WORKS FOR YOU.™

Courtesy of Machine.Market