



| | |
|-------------------------|----------------------------------|
| OPERATING WEIGHT | 15,820 lbs (7,191 kg) |
| NET ENGINE POWER | 75/86 hp (SAE J 1349) (56/64 kW) |
| DIG DEPTH (STD) | 14' 8" (4.5 m) |
| DIG DEPTH (EXT) | 19' 3" (5.9 m) |



TX750/760 TRACTOR LOADER BACKHOE



Flow compensated, closed-center control valve on the backhoe provides unmatched controllability

Narrow backhoe boom provides better visibility into the trench

Wide stabilizer spread increases stability when operating to the side

Single, center mounted loader dump cylinder has fewer wear points

Tilt up hood and grill provides excellent serviceability

Dry, wear compensated extendable dipperstick requires less maintenance

ENGINE

| Manufacturer, model | PERKINS, Model 1 1004-40 T | |
|---|-----------------------------|-----------------------------|
| | TX750 | TX760 |
| Induction | Norm asp | Turbo |
| Gross power rating @ 2,200 rpm (SAE J 1349) | 75 hp (56 kW) | 86 hp (64 kW) |
| Net power rating @ 2,200 rpm (SAE J 1349) | 69 hp (52 kW) | 80 hp (60 kW) |
| Net torque @ 1,400 rpm (SAE J 1349) | 212 lbf (287 Nm) | 254 lbf (345Nm) |
| Displacement | 258 in ³ (4.2 L) | 244 in ³ (3.9 L) |

High torque back-up for lugging ability. High power-to-weight ratio. Low operating speed gives a long life. Key stop/start with thermostart. Replaceable valve seat inserts. Helical inlet ports. Self-priming fuel injection system. Two-stage dry air cleaner. FASTRAM combustion system ensures quick starting, fuel economy and minimizes exhaust emissions.

ELECTRICAL SYSTEM

| | |
|----------------------------------|----------------------------------|
| Alternator (95 amps on AC units) | 70 A |
| Battery (Single) | 770 CCA, 115 amp/hr - 12 V |
| Battery (Double) | 590 CCA - each, 72 amp/hr - 12 V |

Battery step-mounted for good access. Low maintenance battery. Connectors sealed against water and dust. 33 circuit fuses. 25 circuit relays.

TRANSMISSION & GROUND SPEEDS

TURNER transmission. 4-speed synchro shuttle gearbox. Single-stage torque converter with 2.87:1 stall ratio. High transport speed reduces highway travel times. High tractive effort in first and second gears for high loader performance. Modulated forward and reverse clutch packs enable smooth direction changes. TX750 with 2WD standard and 4WD optional. Front console switch allows effortless engagement of 4WD on the move.

| | | |
|---------------------|----------------------------|-------------------------------|
| Tires: front | 11Lx16 12 ply front tires | 12.5/80x18 10 ply front tires |
| rear | 16.9x28 10 ply rear tires: | 19.5Lx24 10 ply rear tires |

| Travel speeds | TX750 | | TX760 | |
|---------------|---------------------|-------------|--------------|-------------|
| | Forward Gear | | | |
| 1 | 3.3 mph | (5.3 km/h) | 3.0 mph | (4.8 km/h) |
| 2 | 5.4 mph | (8.6 km/h) | 4.9 mph | (7.9 km/h) |
| 3 | 12.2 mph | (19.6 km/h) | 11.2 mph | (18.0 km/h) |
| 4 | 24.6 mph | (39.4 km/h) | 22.5 mph | (36.2 km/h) |

TURNING CIRCLE

| | Over tires | Over bucket |
|----------------|-------------------|--------------------|
| Without brakes | 26' 11" (8.2 m) | 35' 9" (10.9 m) |
| With brakes | 21' 4" (6.5 m) | 31' 10" (9.7 m) |

Depending on tire size

AXLES

| | Front | Rear |
|-----------------------|------------------------|------------------------|
| Static loading rating | 28,300 lbs (12,863 kg) | 32,498 lbs (14,772 kg) |
| SAE J 43 | 17,570 lbs (7,986 kg) | 15,153 lbs (6,888 kg) |

Outboard planetary final drives for easier servicing. Foot-actuated differential lock for ease of operation. 16° front axle oscillation to maintain maximum ground contact and traction.

BRAKES

High capacity long life sealed wet disk brakes. Self-equilizing and self-adjusting. Friction area per brake assembly 113 in² (728 cm²). Selectable 2 or 4 wheel braking.

FLUID CAPACITIES

| | | |
|-------------------------------|----------|----------|
| Fuel tank | 31.7 gal | (120 L) |
| Engine coolant | 4.2 gal | (16 L) |
| Engine oil (including filter) | 2.8 gal | (10.7 L) |
| Transmission | 4.0 gal | (15 L) |
| Rear axle (4WD) | 4.6 gal | (17.5 L) |
| Front axle (4WD) | 3.3 gal | (12.5 L) |
| Hydraulic system | 23.8 gal | (90 L) |

HYDRAULIC SYSTEM

| | | |
|----------------------------|-----------|-----------|
| Main pump @ 2,200 rpm | 21 gpm | (80 Lpm) |
| Secondary pump @ 2,200 rpm | 16.5 gpm | (62 Lpm) |
| System main relief setting | 3,250 psi | (225 bar) |
| Unloader settings | 3,000 psi | (207 bar) |

Closed center-load sensing flow sharing system. Twin gear pumps for reliability. Power Boost to match digging power and speed to application. Automatic or manually activated to give more precise control as required. Single pedal operation of auxiliary circuit and extending dipper (opt). Hydraulic oil cooler reduces operating temperatures. Hydraulic tank and filter easily accessed from ground level. COMMERCIAL hydraulic pumps. HUSCO hydraulic valves. PACOMA hydraulic cylinders.

CAB

TIM cab. Wide opening door with self cleaning steps and large grab rails. Large windows, lowline curved hood and full depth rear window enhance all around visibility. Door windows can be partially or fully opened for ventilation. Raised rear window provides ventilation and protection from the rain. Backlit, touch-operated switches. Adjustable tilt steering wheel. Two front and rear defrosting vents. Powerful 3 speed heater with two forward and three rear vents. Adjustable rear working lights. Noise emission ambient L_{WA} 78 dB (A) A/C option available.

WEIGHT CONFIGURATIONS

| | | |
|---|-----------|------------|
| Total machine weight | 15,820 lb | (7,191 kg) |
| Add/delete the following weights to the base machine: | | |
| 7-in-1 Multi-Purpose* | + 860 lb | (391 kg) |
| 7-in-1 Multi-Purpose Fork Kit ** | + 355 lb | (161 kg) |
| Deep Dig Dipper | + 427 lb | (194 kg) |
| ROPS Frame | - 287 lb | (130 kg) |
| 2 WD | - 727 lb | (330 kg) |

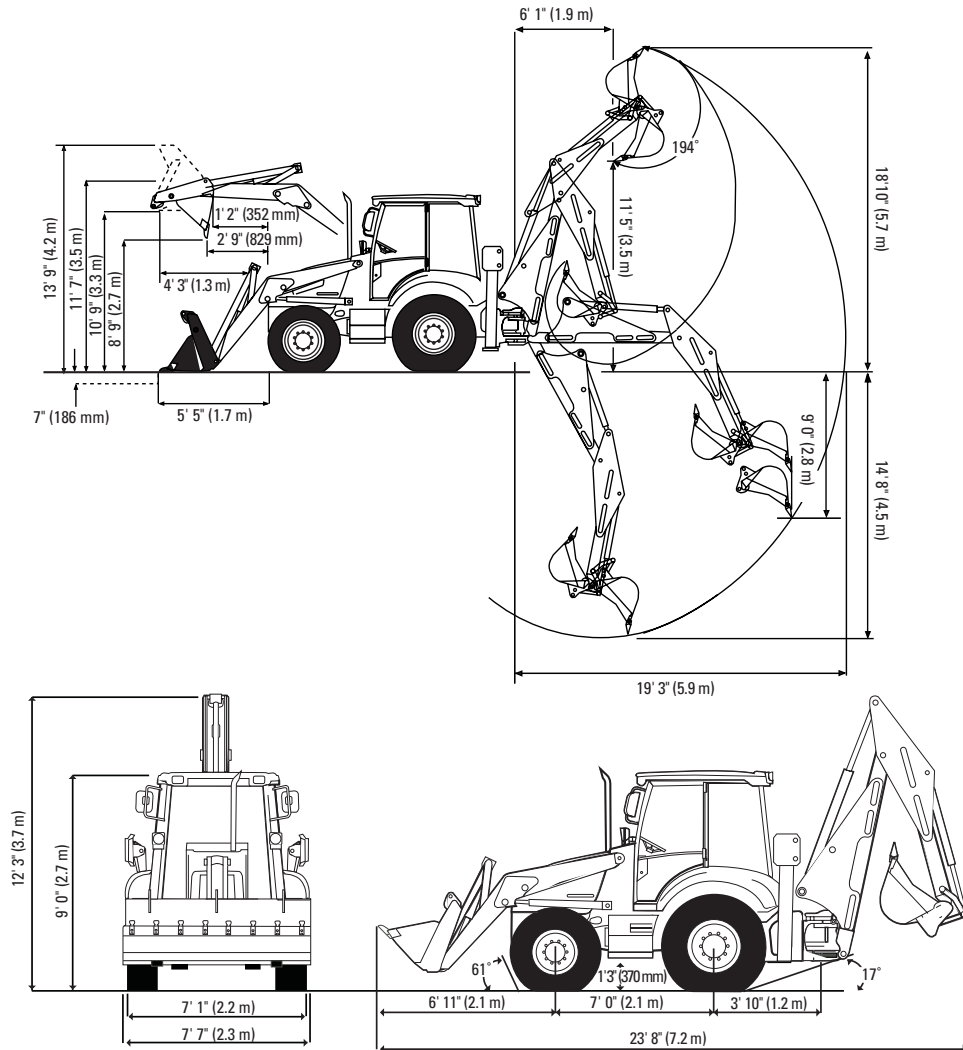
LOADER DIMENSIONS

| | Standard Bucket | 7-in-1 Bucket |
|-----------------------------------|------------------------|----------------------|
| Dump clearance at 45° | 8' 9" (2.68 m) | 8' 9" (2.68 m) |
| Dump height (fully dumped) | 8' 6" (2.56 m) | 8' 6" (2.60 m) |
| Loadover height | 10' 9" (3.28 m) | 10' 9" (3.28 m) |
| Hinge pin height | 11' 7" (3.52 m) | 11' 7" (3.52 m) |
| Pin forward reach | 1' 2" (352 mm) | 1' 2" (352 mm) |
| Reach at ground | 5' 5" (1.65 m) | 5' 5" (1.65 m) |
| Max. reach at full height | 4' 3" (1.28 m) | 4' 3" (1.28 m) |
| Reach at full height - 45° | 2' 9" (829 mm) | 2' 9" (829 mm) |
| Reach at full height fully dumped | 2' 1" (645 mm) | 2' 1" (645 mm) |
| Dig depth | 7" (186 mm) | 7" (186 mm) |
| Rollback at ground | 45° | 45° |
| Max dump angle | 57° | 57° |
| Overall operating height | 13' 9" (4.20 m) | 13' 11" (4.25 m) |

LOADER PERFORMANCE

| | Standard Bucket | 7-in-1 Bucket |
|------------------------------|------------------------|------------------------|
| Bucket breakout | 10,485 lbf (4,756 kgf) | 10,097 lbf (4,580 kgf) |
| Arms breakout | 10,329 lbf (4,685 kgf) | 9,579 lbf (4,345 kgf) |
| Lift capacity to full height | 7,604 lbf (3,449 kgf) | 6,742 lbf (3,058 kgf) |

TX750/760 LOADER



BACKHOE DIMENSIONS

| | Standard Dipper | Deep Dig Dipper (Ret.) | Deep Dig Dipper (Ext.) |
|----------------------------------|------------------|------------------------|------------------------|
| Dig depth | | | |
| SAE | 14' 8" (4.46 m) | 14' 8" (4.46 m) | 19' 3" (5.86 m) |
| 2 ft flat bottom SAE | 14' 7" (4.45 m) | 14' 7" (4.45 m) | 19' 0" (5.80 m) |
| Reach ground level to swing post | 19' 3" (5.87 m) | 19' 3" (5.87 m) | 23' 5" (7.14 m) |
| Loading reach | 6' 1" (1.86 m) | 6' 1" (1.86 m) | 9' 2" (2.79 m) |
| Operating height | 18' 10" (5.75 m) | 18' 10" (5.75 m) | 22' 1" (6.73 m) |
| Loading height SAE | 11' 5" (3.48 m) | 11' 5" (3.48 m) | 14' 8" (4.46 m) |
| Max load height | 12' 3" (3.74 m) | 12' 3" (3.74 m) | 15' 6" (4.72 m) |
| Maximum straight wall dig depth | 9' 0" (2.75 m) | 9' 0" (2.75 m) | 13' 6" (4.11 m) |
| Bucket rotation | | | |
| Speed | 194° | 194° | 194° |
| Power | 163° | 163° | 163° |
| Side reach from stabilizers | 12' 10" (3.91 m) | 12' 10" (3.91 m) | 17' 0" (5.18 m) |
| Stabilizer spread | 11' 3" (3.43 m) | 11' 3" (3.43 m) | 11' 3" (3.43 m) |
| Maximum levelling angle | 15° | 15° | 15° |

BACKHOE PERFORMANCE

| | Standard Dipper | Deep Dig Dipper (Ret.) | Deep Dig Dipper (Ext.) |
|----------------|---------------------------|---------------------------|---------------------------|
| Swing torque | 11,875 lbf•ft (16,100 Nm) | 11,875 lbf•ft (16,100 Nm) | 11,875 lbf•ft (16,100 Nm) |
| Dipper tearout | 8,329 lbf (3,778 kgf) | 8,329 lbf (3,778 kgf) | 5,580 lbf (2,531 kgf) |
| Bucket tearout | | | |
| Speed | 10,082 lbf (4,573 kgf) | 10,082 lbf (4,573 kgf) | 10,082 lbf (4,573 kgf) |
| Power | 12,516 lbf (5,677 kgf) | 12,516 lbf (5,677 kgf) | 12,516 lbf (5,677 kgf) |



OPERATING WEIGHT 15,820 lbs (7,191 kg)
NET ENGINE POWER 75/86 hp (SAE J 1349) (56/64 kW)
DIG DEPTH (STD) 14' 8" (4.5 m)
DIG DEPTH (EXT) 19' 3" (5.9 m)



TX750/760 TRACTOR LOADER BACKHOE

LOADER ATTACHMENTS

| | Standard Bucket | | 7-in-1 Bucket | |
|----------|----------------------|-----------------------|----------------------|-----------------------|
| Width | 7' 7" | (2.31 m) | 7' 7" | (2.31 m) |
| Capacity | 1.32 yd ³ | (1.0 m ³) | 1.32 yd ³ | (1.0 m ³) |
| Weight | 873 lbs | (397 kg) | 1,733 lbs | (788 kg) |

FORKS

| | Standard Bucket |
|---------------------------|----------------------|
| Fork Length | 3' 6" (1.07 m) |
| Section Width | 3" (80 mm) |
| Assembly Weight | 355 lbs (161 kg) |
| Max. Operating Height | 10' 1" (3.07 m) |
| Reach at Ground Level | 8' 11" (2.71 m) |
| Reach at Full Height | 7' 4" (2.23 m) |
| S.W.L. at 20" Load Center | 2,204 lbs (1,000 kg) |

LIFTING PERFORMANCE

| Bucket Pin HT Above/Below lbs (kg) | BOOM LIFT | | | | DIPPER LIFT | | | CRANING LIFT | | | |
|---------------------------------------|---------------|---------------|---------------|---------------|---------------|---------------|---------------|---------------|---------------|---------------|---------------|
| | Extending | | | | Extending | | | Extending | | | |
| | Ground | Std | Ret | Ext | Std | Ret | Ext | Std | Ret | Ext | |
| +18' | - | - | - | - | - | - | - | - | - | - | 2,840 (1,288) |
| +16' | - | - | - | 1,830 (830.1) | - | - | 2,346 (1,064) | - | - | - | 2,840 (1,288) |
| +14' | 3,126 (1,418) | 2,877 (1,305) | 1,889 (856.8) | 3,814 (1,730) | 3,752 (1,418) | 2,152 (976) | 4,314 (1,956) | 4,295 (1,948) | 2,813 (1,276) | | |
| +12' | 3,212 (1,457) | 2,895 (1,313) | 1,975 (895.8) | 3,404 (1,544) | 3,131 (1,418) | 1,995 (904) | 3,999 (1,813) | 3,909 (1,773) | 2,791 (1,266) | | |
| +10' | 3,212 (1,457) | 2,800 (1,270) | 1,947 (883.1) | 3,307 (1,500) | 2,932 (1,418) | 1,896 (860) | 3,924 (1,779) | 3,873 (1,756) | 2,791 (1,266) | | |
| +8' | 3,164 (1,435) | 2,760 (1,251) | 1,914 (868.2) | 3,466 (1,572) | 3,051 (1,418) | 1,995 (904) | 3,955 (1,794) | 3,909 (1,773) | 2,892 (1,311) | | |
| +6' | 3,029 (1,373) | 2,685 (1,217) | 1,914 (868.2) | 4,012 (1,819) | 3,638 (1,418) | 2,385 (1,081) | 4,630 (2,100) | 4,418 (2,004) | 3,225 (1,462) | | |
| +4' | 2,952 (1,339) | 2,579 (1,169) | 1,914 (868.2) | - | - | 2,914 (1,321) | - | - | - | 3,713 (1,684) | |
| +2' | 2,857 (1,296) | 2,463 (1,117) | 1,909 (865.9) | - | - | 3,876 (1,758) | - | - | - | 4,301 (1,950) | |
| 0 | 2,743 (1,244) | 2,425 (1,100) | 1,799 (816.0) | - | - | 4,398 (1,994) | - | - | - | 4,967 (2,253) | |
| -2' | 2,703 (1,226) | 2,394 (1,085) | 1,786 (810.1) | - | - | - | - | - | - | - | - |
| -4' | 2,646 (1,200) | 2,463 (1,117) | 1,786 (810.1) | - | - | - | - | - | - | - | - |
| -6' | 2,690 (1,220) | 2,482 (1,125) | 1,786 (810.1) | - | - | - | - | - | - | - | - |
| -8' | 2,866 (1,300) | 2,531 (1,148) | 2,072 (939.8) | - | - | - | - | - | - | - | - |
| -10' | - | - | 2,584 (1,172) | 2,315 (1,050) | - | - | - | - | - | - | - |

- Lift capacities shown are 87% of maximum lift force per SAE definition J31, and are not stability limited unless marked with an*.
- Figures stated apply within 90° either side of machine.
- Figures stated are determined by static tests and do not include dynamic factors.
- Figures stated are without bucket fitted.
- Boom is angled at 78° for dipper lift capacities.
- Loader bucket is on ground.
- Crane capacity determined with hydraulic boom lock-up feature selection.



- COMPACT EXCAVATORS
- WHEEL LOADERS
- TRACTOR LOADER BACKHOES
- SOIL COMPACTORS
- RIGID HAUL TRUCKS
- ARTICULATED HAUL TRUCKS
- SCRAPERS
- TELEHANDLERS

Terex
 8800 Rostin Road
 Southaven MS 38671
 662.393.1800 phone 662.393.1700 fax
 sales@terexca.com
 www.terex.com



Terex reserves the right to change specifications without notice. Illustrations shown and described may include optional equipment, accessories or product specifications which may vary from country to country, see your local agent for details.



All Parts and Service Support is U.S. Based

TX04.TX750/760.01.1102.05.PRAD