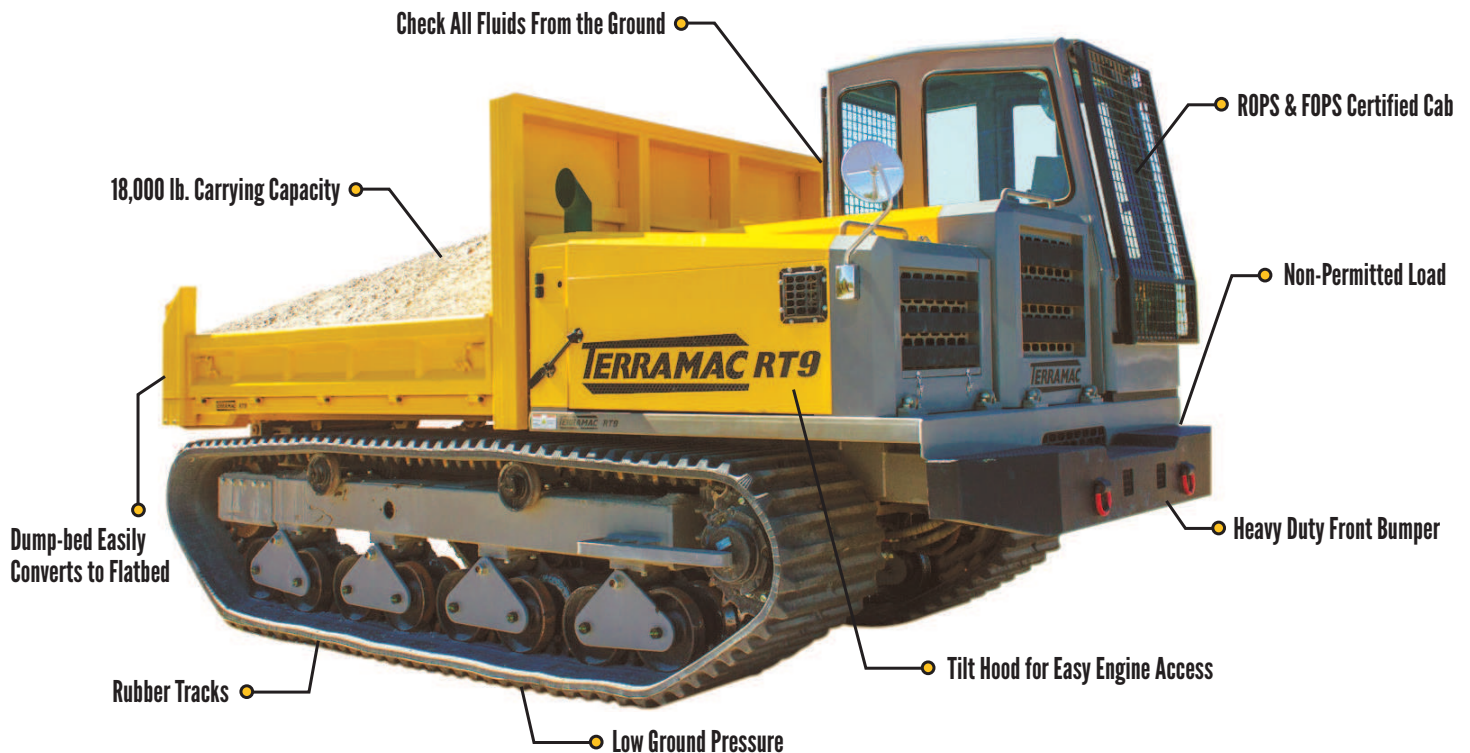




TERRAMAC® RT9 RUBBER TRACK CARRIER



DISCOVER THE DIFFERENCE

Terramac® Offers Full-Line Dealership Support Which Means Superior Service for Your Customers

Benefits:

- Minimal Maintenance
- Does Not Require an Oversized Permit to Transport
- Domestic Parts Availability
- North American Made
- Automatic Downshift

Markets Served:

- Pipeline
- General Construction
- Environmental
- Restoration & Reclamation
- Utility

Customization Options:

- Bark Blowers
- Hydroseeders
- Vacuum Excavators
- Welding Tac Units
- Personnel Carriers
- Fuel Tanks
- Cranes
- Sand Blasters
- Digger Derricks
- Boom Lifts

630-365-4800 | info@terramac.com | www.terramac.com

TERRAMAC® RT9 RUBBER TRACK CARRIER

Standard RT9 Specs

The Terramac® RT9 is easily maneuvered over rough, soft and steep ground conditions. Wherever your job site may be, the RT9 will lead the way. Customizable attachments available, contact your local Dealer or Terramac® factory for more details.

PERFORMANCE

| | |
|---------------------------------|-------------|
| Max. Carrying Capacity | 18,000 lbs. |
| Travel Speed - 1st Gear | 2.5 mph |
| Travel Speed - 2nd Gear | 6 mph |
| Gradeability (unloaded) | 32% |
| Turning Radius | 10 ft |
| Ground Pressure (full capacity) | 5.1 PSI |
| Ground Pressure (unloaded) | 3.0 PSI |

HYDRAULICS

| | |
|---------------------------|-------------------|
| Transmission | HST |
| Piston Pump Capacity (x2) | 43 gpm / side |
| Relief Valve Piston Pump | 5,600 PSI |
| Tandem Gear Pump Capacity | |
| Front Section (HST Drive) | 20 gpm @ 500 PSI |
| Rear Section (Aux Output) | 25 gpm @ 2500 PSI |
| Optional Pump Drive | 25 gpm @ 2500 PSI |

ENGINE

| | |
|-------------------|------------------|
| Manufacturer | Cummins |
| Model | QSB 6.7 |
| Displacement | 409 cu. in. |
| Horsepower | 230 HP |
| Electrical System | 12 VDC |
| Battery | 8D with 1400 CCA |
| Fuel Capacity | 42 gallons |

DIMENSIONS

| | |
|---------------------------|-------------|
| Full Length | 20' |
| Full Width | 8' 5" |
| Wheel Base | 12' 9" |
| Min Ground Clearance | 20" |
| Front Overhang | 2' 6" |
| Track Width | 27" |
| Track Length | 32' 2" |
| Full Height | 9' 3" |
| Height of Dump Bed | 4' 8" |
| Height of Dump Side | 14" |
| Length of Dump Bed | 11' 3" |
| Width of Dump Bed | 8' 4" |
| Dumping Angle | 48° |
| Machine Weight (no bed) | 21,500 lbs. |
| Machine Weight (with bed) | 26,000 lbs. |



11/2015