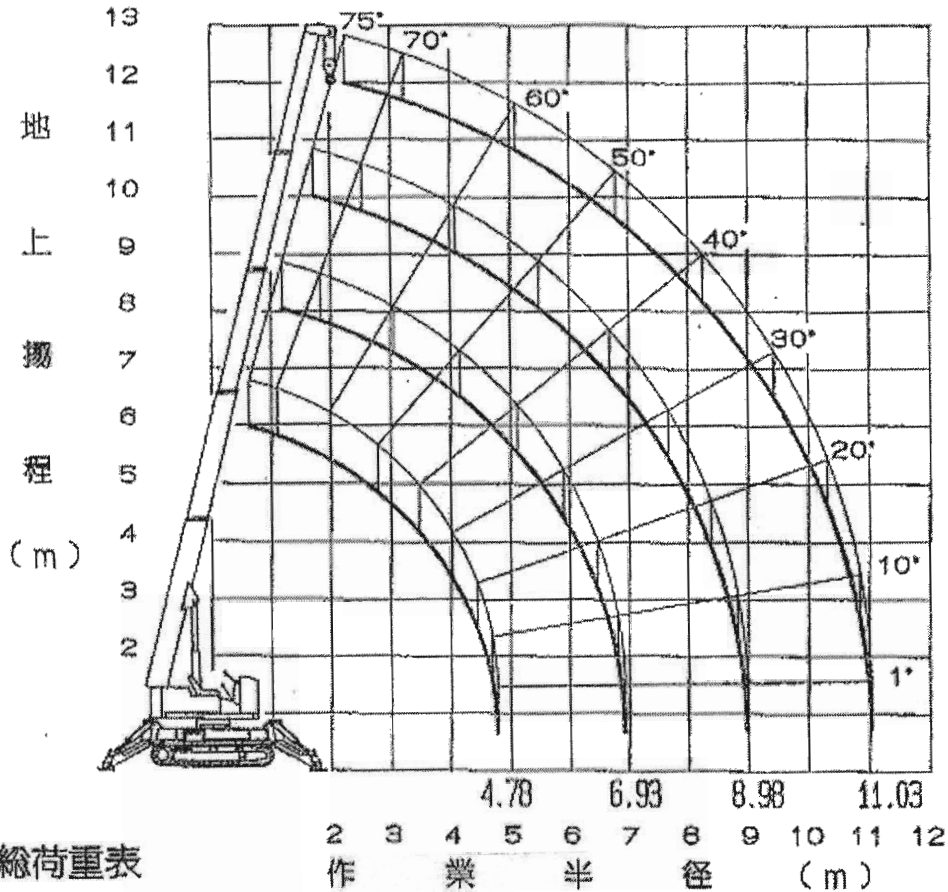


TC335S形トローアミニクレーン

作業範囲図



定格総荷重表

フームA及びAB使用時

LOAD CHART RATE

Boom A & AB Working Radius

Working Radius (m)	2.0	2.5	3.0	3.5	4.0	4.5	4.78
Rated Load (ton)	2.98	2.45	2.0	1.64	1.36	1.11	1.0

Boom A, B, C (Please follow belows chart when extend Boom "C" any length)

Working Radius (m)	2.5	3.0	3.5	4.0	4.5	5.0	5.5	6.0	6.5	6.93
Rated Load (ton)	2.3	2.0	1.6	1.36	1.11	0.92	0.75	0.65	0.56	0.5

Boom A, B, C, D (Please follow belows chart when extend Boom "D" any length)

Working Radius (m)	3.0	4.0	5.0	6.0	7.0	8.0	8.98
Rated Load (ton)	1.0	1.0	0.8	0.65	0.49	0.39	0.32

Boom A, B, C (Please follow belows chart when extend Boom "E" any length)

Working Radius (m)	3.0	4.0	5.0	6.0	7.0	8.0	9.0	10.0	11
Rated Load (ton)	0.6	0.6	0.5	0.4	0.32	0.3	0.25	0.22	0.19

This chart include the weight of Hook 25kg.