

# UR-W546C

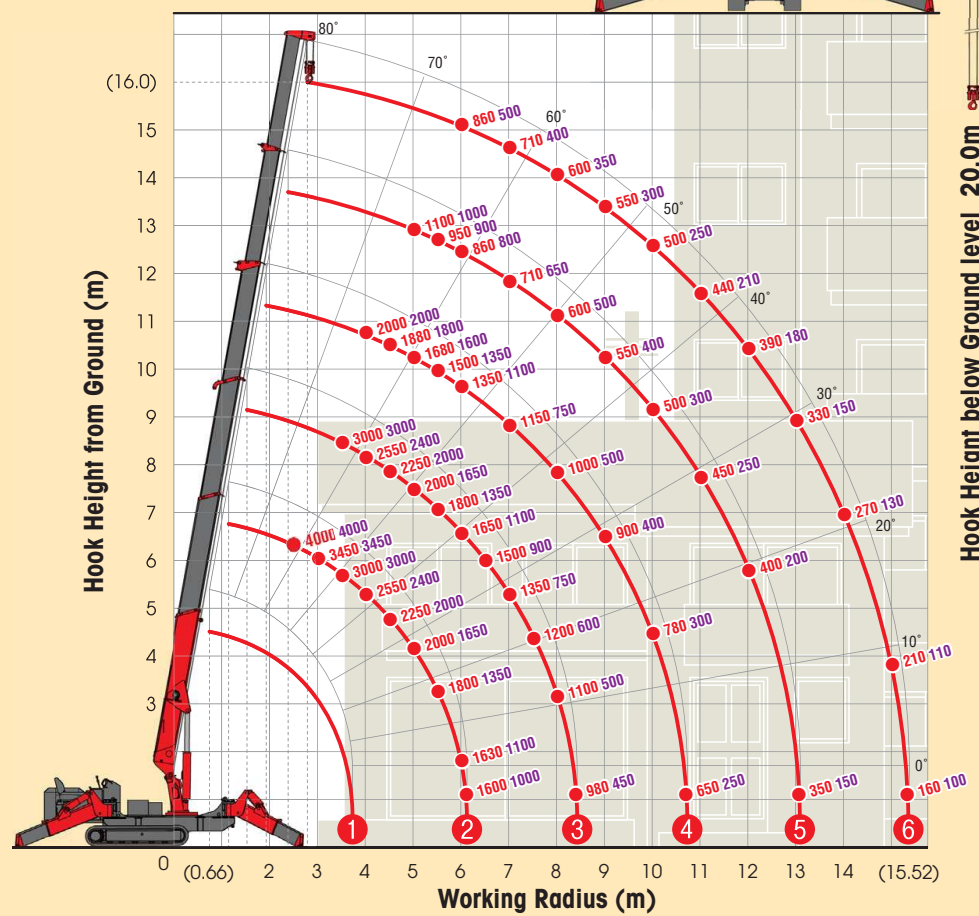
UR-W546C features maximum 4.05t lifting power to allow heavy load lifting operation.

It is capable of lifting maximum 4.05t at 2.5m with a size of only 1400mm wide. It offers a combination of fantastic accessibility and heavy lifting capacity. Standard Automatic stop for overloading device provides the benefit of overloading prevention for safety.



## WORKING RANGE & NET RATED LOADS (kg)

Outrigger ● Max-extended NOT max-extended



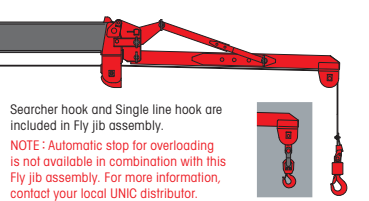
## Automatic stop for overloading (KM-100)



## Three colored lamp



## Fly jib assembly (Options)

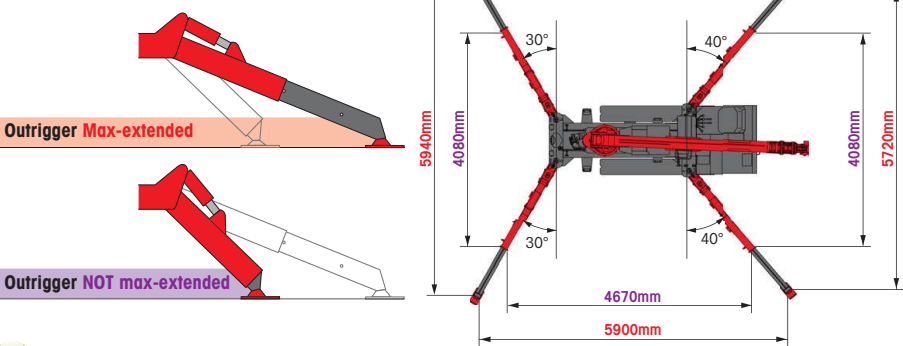


Length	2.0m
Lifting capacity	Max. 700kg
Tilt angles	0°, 20°, 40°, 60°

## SPECIFICATIONS

Crane model	UR-W546C2
Lifting capacity	Max. 4.05t at 2.5m
Working radius	Min. 0.68m, Max. 15.52m
Hook height (Approx.)	Max. 16.0m
Length	Max. 20.0m with 4-part line Min. 3.93m to Max. 15.71m
Boom	Extending speed [with electric power unit] [50Hz] 11.78m / 35.0 sec. [60Hz] 11.78m / 48.0 sec. Raising angle / speed [with electric power unit] [50Hz] 0° to 80° / 18.0 sec. [60Hz] 0° to 80° / 25.0 sec. Structure 6-section box beam type telescoping boom
Winch	Single line speed [with electric power unit] [50Hz] 44.0 m/min (at 4th layer) [60Hz] 40.0 m/min (at 4th layer) Hook speed [with electric power unit] [50Hz] 11.0 m/min (at 4th layer with 4-part line) [60Hz] 10.0 m/min (at 4th layer with 4-part line) Structure Hydraulic motor driven, spur gear reduction, with automatic mechanical brake and wire rope retaining roller Wire rope Construction : XP IWRC 6 x WS(26) / Diameter x Length : 8mm x 91.5m / Breaking strength : 47.1kN [4800 kgf] Hook block 4.00t capacity, 2 sheaves with safety latch
Slewing	Range 360° continuous rotation on a ball bearing race Speed [with electric power unit] 2.5 rpm [50Hz] 2.0 rpm [60Hz] 2.3 rpm Structure Hydraulic motor driven, worm gear reduction, and worm self-locking brake (supported by ball bearings)
Outriggers	Horizontal, Vertical A double acting hydraulic cylinder, direct pushing type (Directly connected with hydraulic automatic lock device)
Hydraulic pump	Type Variable delivery piston pump Rated pressure 21.6 MPa [220 kgf/cm <sup>2</sup> ] Rated delivery 60 liters/min Rated revolution 2500 rpm
Hydraulic oil tank capacity	75 liters
Safety devices	Pressure relief valve for hydraulic circuit / Counterbalance valves for boom raising and boom telescoping cylinders / Pilot-operated check valves for outrigger cylinders (Horizontal) Double pilot-operated check valves for outrigger cylinders (Vertical) / Boom angle indicator with load indicator / Hook safety latch / Automatic mechanical brake for winch Automatic stop for overwinding / Overwinding alarm / Automatic stop for leaving minimum wire rope / Emergency stop button / Inter-lock device of crane and crawling levers Inter-lock device of crane and outriggers / Level / Automatic stop for overloading (KM-100) / Digital load meter / Three colored lamp / Headlight / Boom outrigger monitor lamp

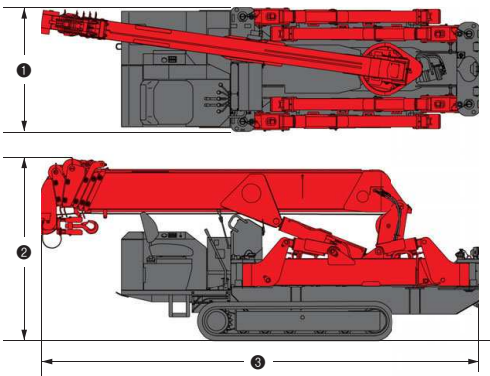
## OUTRIGGER POSITIONS



## CRAWLING GEAR

Crane model	UR-W546C2
Crawling speed [with electric power unit]	0~3.0 km/h, forward / reverse [50Hz] 0~1.3 km/h [60Hz] 0~1.5 km/h
Hill climbing ability	23°
Tread length	1750mm
Ground contact pressure [with electric power unit]	46.1 kPa [0.47 kgf/cm <sup>2</sup> ] 47.1 kPa [0.48 kgf/cm <sup>2</sup> ]
Engine manufacturer / model	Yanmar / 3TNV76
Displacement	1115cc
Maximum output	15.17kW(20.6PS) / 2500 rpm, Rated output
Fuel	Diesel
Fuel tank capacity	40 liters
Steering	Hydraulic drive independent of left / right
Starter	Starter motor

## DIMENSIONS



Crane model	UR-W546C2
① Total width	1380mm
② Total height	2035mm
③ Total length	4870mm
Mass of crane	4920kg [5070kg] [with electric power unit]

## Electric power unit specifications

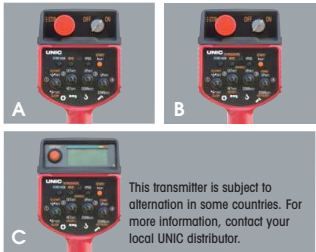
Rated power	7.5kW (3-phase 4 poles)
Voltage	AC 200V or 400V (50Hz / 60Hz) 3 phase 4P

\*Not included any cables.



Standard equipments and Options

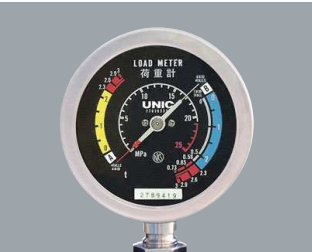
UNIC MINI-CRAWLER CRANE



1 Radio remote control  
A W094C, W295C  
B W376C, W546C, W547C, W706C  
C W1006C



2 Cable remote control



3 Load meter



4 Digital load meter  
Load indication is each 20kg (0.02t).



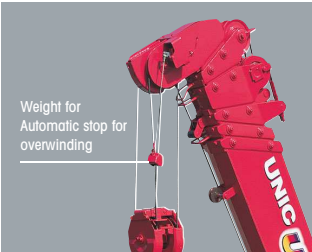
5 Automatic stop for overloading  
KM-100 W376C, W546C, W547C



6 Automatic stop for overloading  
ML-300 W706C



7 Safe load indicator



8 Automatic stop for overwinding



9 Automatic stop for leaving minimum wire rope



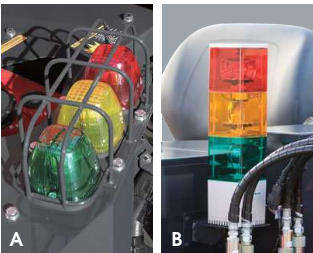
10 Emergency stop button  
A W094C, W295C  
B W376C, W546C, W547C, W706C, W1006C



11 Level



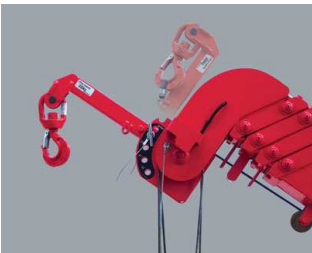
12 Turn over prevention device



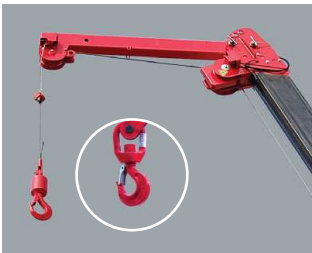
13 Three colored lamp  
A W295C  
B W376C, W546C, W547C, W706C, W1006C



14 Boom outrigger monitor lamp



15 Searcher hook assembly



16 Fly jib assembly



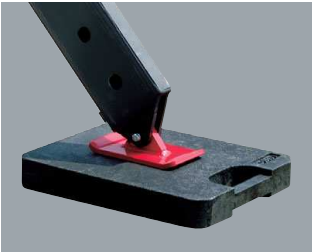
17 Single line hook



18 Working light



19 Headlight



20 Outrigger mats



21 Black crawler belt



22 White crawler belt



23 White crawler belt (as spare)



24 Rubber Pad

25 20M cable for motor (200V)

26 20M cable for motor (400V)

STANDARD EQUIPMENTS / OPTION [★ Standard ● Option — Not available]

Crane model	UR-W094C		UR-W295C		UR-W295C1		UR-W376C2		UR-W546C2		UR-W547C2		UR-W706C2		UR-W1006C2		Crane model
	UR-W094CP2E		UR-W295CP2A	UR-W295CP2AM	UR-W295C1A	UR-W295C1AM	UR-W376C2A	UR-W376C2AM	UR-W546C2A	UR-W546C2AM	UR-W547C2A	UR-W547C2AM	UR-W706C2A	UR-W706C2AM	UR-W1006C2A	UR-W1006C2AM	
Engine manufacturer / model	Mitsubishi / GB300LE		Mitsubishi / GB400LE	Mitsubishi / GB400LE	Kubota / Z482-E3B	Kubota / Z482-E3B	Yanmar / 3TNV76	Yanmar / 3TNV76	Yanmar / 3TNV76	Yanmar / 3TNV76	Yanmar / 3TNV76	Yanmar / 3TNV76	Mitsubishi / S4L2	Mitsubishi / S4L2	Yanmar / 4TNV88	Yanmar / 4TNV88	Engine manufacturer / model
Fuel	Petrol		Petrol	Petrol	Diesel	Diesel	Diesel	Diesel	Diesel	Diesel	Diesel	Diesel	Diesel	Diesel	Diesel	Diesel	Fuel
Electric motor	—		—	AC 200V or 400V	—	AC 200V or 400V	—	AC 200V or 400V	—	AC 200V or 400V	—	AC 200V or 400V	—	AC 200V or 400V	—	AC 400/400-440V	Electric motor
1 Radio remote control	★		★	★	★	★	★	★	★	★	★	★	★	★	★	★	Radio remote control
2 Cable remote control	●		●	●	●	●	●	●	●	●	●	●	●	●	●	●	Cable remote control
3 Load meter	★		★	★	★	★	—	—	—	—	—	—	—	—	—	—	Load meter
4 Digital load meter	—		●	●	●	●	★	★	★	★	★	★	★	★	★	★	Digital load meter
5 Automatic stop for overloading (KM-100)	—		●	●	●	●	★	★	★	★	★	★	—	—	—	—	Automatic stop for overloading (KM-100)
6 Automatic stop for overloading (ML-300)	—		—	—	—	—	—	—	—	—	—	—	★	★	—	—	Automatic stop for overloading (ML-300)
7 Safe load indicator	—		—	—	—	—	—	—	—	—	—	—	—	—	★	★	Safe load indicator
8 Automatic stop for overwinding	★		★	★	★	★	★	★	★	★	★	★	★	★	★	★	Automatic stop for overwinding
9 Automatic stop for leaving minimum wire rope	★		★	★	★	★	★	★	★	★	★	★	★	★	★	★	Automatic stop for leaving minimum wire rope
10 Emergency stop button	★		★	★	★	★	★	★	★	★	★	★	★	★	★	★	Emergency stop button
11 Level	★		★	★	★	★	★	★	★	★	★	★	★	★	★	★	Level
12 Turn over prevention device	—		★	★	★	★	●	●	—	—	—	—	—	—	—	—	Turn over prevention device
13 Three colored lamp	—		●	●	●	●	★	★	★	★	★	★	★	★	★	★	Three colored lamp
14 Boom outrigger monitor lamp	—		—	—	—	—	★	★	★	★	★	★	★	★	★	★	Boom outrigger monitor lamp
15 Searcher hook assembly	—		●	●	●	●	●	●	●	●	●	●	—	—	—	—	Searcher hook assembly
16 Fly jib assembly	—		●	●	●	●	●	●	●	●	—	—	●	●	★	★	Fly jib assembly
17 Single line hook	—		●	●	●	●	—	—	—	—	—	—	—	—	—	—	Single line hook
18 Working light	●		●	●	●	●	●	●	●	●	●	●	●	●	—	—	Working light
19 Headlight	—		—	—	—	—	★	★	★	★	★	★	★	★	★	★	Headlight
20 Outrigger mats	●		●	●	●	●	●	●	●	●	●	●	●	●	—	—	Outrigger mats
21 Black crawler belt	★		★	★	★	★	★	★	★	★	★	★	★	★	—	—	Black crawler belt
22 White crawler belt	●		●	●	●	●	●	●	—	—	—	—	—	—	—	—	White crawler belt
23 White crawler belt (as spare)	●		●	●	●	●	●	●	—	—	—	—	—	—	—	—	White crawler belt (as spare)
24 Rubber Pad	—		—	—	—	—	—	—	—	—	—	—	—	—	★	★	Rubber Pad
25 20M cable for motor (200V)	—		—	●	—	●	—	●	—	●	—	●	—	●	—	—	20M cable for motor (200V)
26 20M cable for motor (400V)	—		—	●	—	●	—	●	—	●	—	●	—	●	—	—	20M cable for motor (400V)