

URW-094 (0.995t x 1.5m)

MINI SPIDER CRANE

- Total width 0.595m
- Max working radius 5.17m
- Petrol powered, optional LPG dual fuel
- Multi-position configurable outriggers
- Intelligent voice warning system
- Radio remote control as standard
- Intelligent throttle activation for economy and ecology



The URW-094 is the world's smallest and lightest mini crane. At only 595mm wide and weighing 1000kg it is ideal for manoeuvring into the most confined working areas and is narrow enough to allow access through a standard doorframe. Once in position, the URW-094 is capable of lifting heavy loads of almost 1 tonne with its 5.49m long boom allowing a maximum hook height of 5.6m.

ADDITIONAL FEATURES



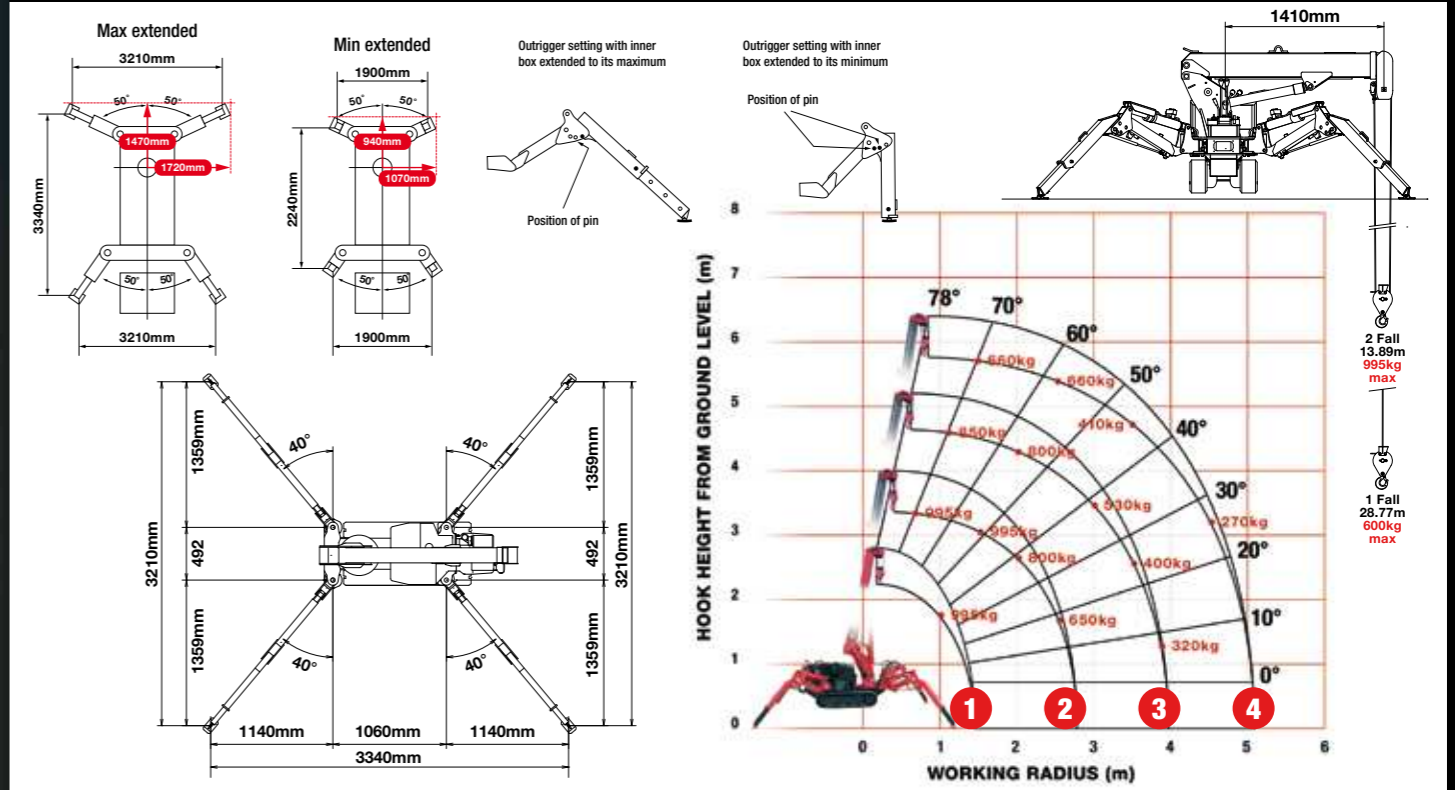
Radio remote control



Optional full safe load indicator

| CRANE SPECIFICATIONS | | |
|------------------------|---|--|
| Crane capacity | capacity: | 0.995t x 1.5m |
| Max working radius | max: | 5.17m |
| Max lifting height | approx: | 5.6m |
| Rope length | max: | 13.89m (2 fall), 28.77m (1 fall) |
| Dimensions | folded: | 1870mm (l) x 595mm (w) x 1290mm (h) |
| Weight | unladen: | 1000kg |
| Point loadings | Due to the many variables involved, point loadings are only available on request | |
| Hook speed | approx: | 8.5m/min (with 3 layers and 2 falls) |
| Telescopic system | boom length: | 1.73 - 5.49m |
| | telescoping speed: | 3.76m/17 seconds |
| | boom type: | 4 section hydraulically telescoping boom, 4 sided box beam |
| Derricking angle/speed | approx: | 0 - 78° / 6.5 seconds |
| Swivelling angle/speed | approx: | 360° (continuous) 1.5min rpm |
| Traction system | drive: | hydrostatic, stepless forward and reverse |
| | travel speed: | 0 - 2.2km/h |
| | gradability: | 20° |
| | track ground length: | 900mm |
| | track ground pressure: | 36.3kPa (0.37kg/cm ²) |
| | track width: | 150mm |
| Engine | manufacturer: | Mitsubishi |
| | fuel: | petrol (LPG dual option) |
| | maximum output: | 5.5kW (7.5PS) / 1800min rpm |
| | starting method: | electric and recoil start as standard |
| | tank capacity: | 6 litres |
| Standard equipment | radio remote control, overwinding alarm, computer controlled intelligent voice warning system, multi-function operation by radio remote control, intelligent throttle activation, automatic hook slow | |
| Optional equipment | 1 fall hook block, LPG dual power, low marking tracks, optional safe load indicator (note: with this SLI option the outriggers must be pinned in their standard position of 50°) | |

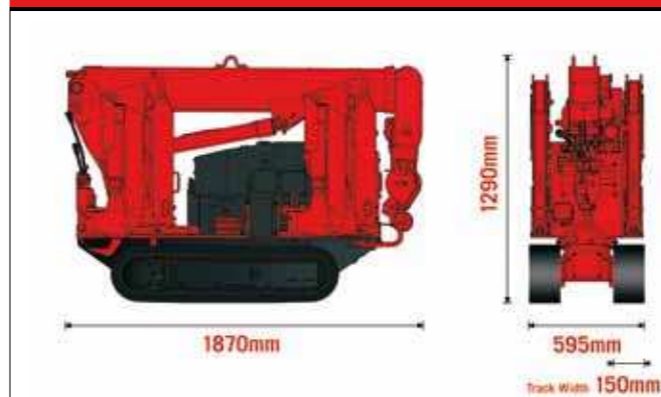
RATED LOADS & OUTRIGGER POSITIONS



| FIRST STAGE EXTENDED 1.73M BOOM LENGTH | | | | | | | | | | | |
|--|--------------|-----------|-----|-----|-----|------|-----|------|------|------|-----|
| Working radius | m | up to 1.0 | 1.1 | 1.2 | 1.3 | 1.41 | | | | | |
| Outrigger | Max-extended | kg | 995 | 995 | 995 | 995 | 995 | | | | |
| | Min-extended | kg | 800 | 800 | 750 | 700 | 650 | | | | |
| SECOND STAGE EXTENDED 1.73 - 3.01M BOOM LENGTH | | | | | | | | | | | |
| Working radius | m | up to 1.0 | 1.1 | 1.3 | 1.5 | 2.0 | 2.5 | 2.69 | | | |
| Outrigger | Max-extended | kg | 995 | 995 | 995 | 995 | 800 | 650 | 580 | | |
| | Min-extended | kg | 800 | 800 | 700 | 600 | 410 | 285 | 230 | | |
| THIRD STAGE EXTENDED 3.01 - 4.25M BOOM LENGTH | | | | | | | | | | | |
| Working radius | m | up to 1.0 | 1.8 | 2.0 | 2.5 | 2.8 | 3.0 | 3.5 | 3.93 | | |
| Outrigger | Max-extended | kg | 850 | 850 | 800 | 650 | 580 | 530 | 400 | 320 | |
| | Min-extended | kg | 500 | 500 | 410 | 285 | 215 | 190 | 145 | 115 | |
| FOURTH STAGE EXTENDED 4.25 - 5.49M BOOM LENGTH | | | | | | | | | | | |
| Working radius | m | up to 2.4 | 2.5 | 2.8 | 3.0 | 3.5 | 4.0 | 4.5 | 5.1 | 5.17 | |
| Outrigger | Max-extended | kg | 660 | 660 | 580 | 530 | 410 | 330 | 270 | 210 | 200 |
| | Min-extended | kg | 360 | 320 | 220 | 190 | 145 | 105 | 80 | 65 | 65 |



DIMENSIONS



OUTRIGGER POSITIONS

