

URW-245 (2.4t x 1.5m)

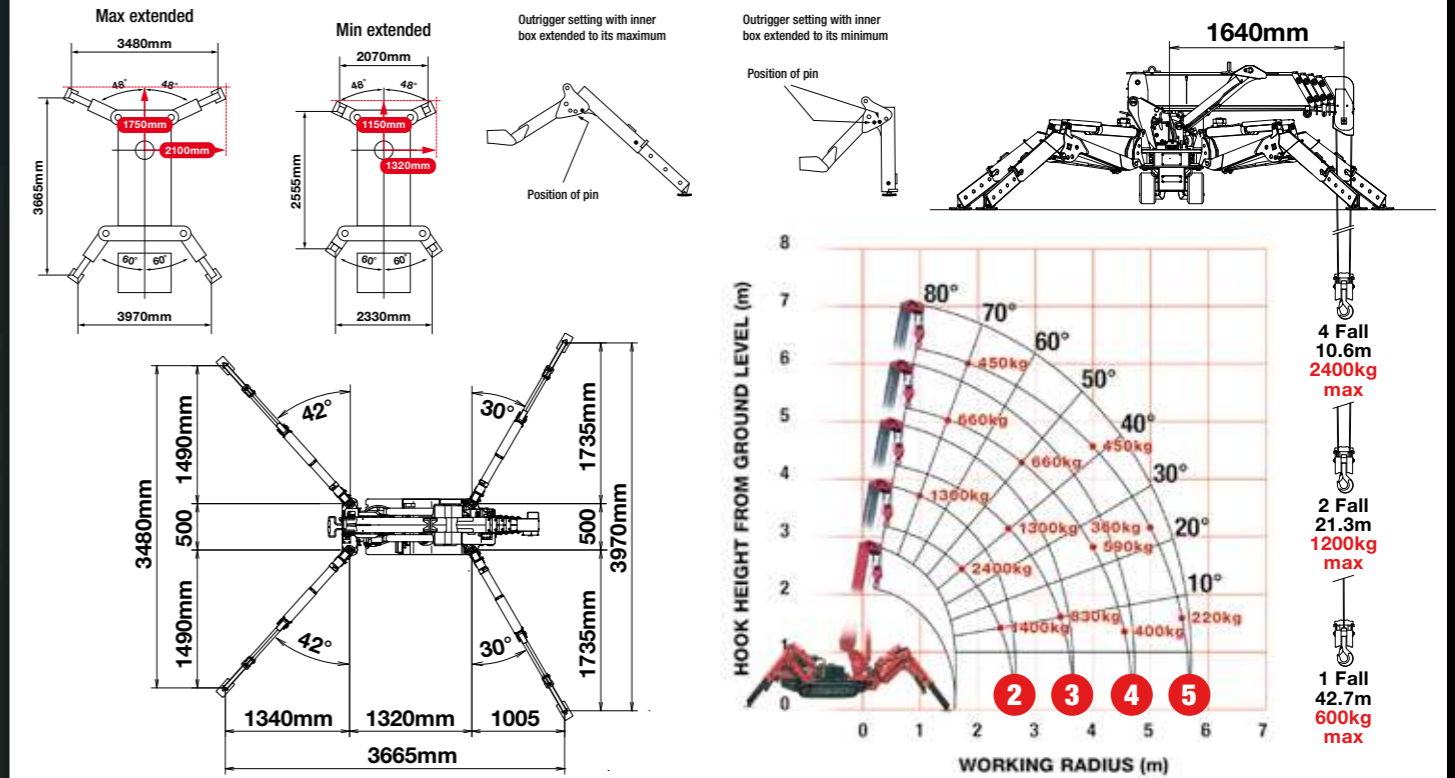
MINI SPIDER CRANE



- Total width 0.6m
- Max working radius 5.85m
- Petrol powered, optional LPG dual fuel
- Operator control of outrigger extension
- Radio remote control as standard
- Working area limitation
- Slew limitation (optional)
- Intelligent throttle activation for economy and ecology



RATED LOADS & OUTRIGGER POSITIONS



The newest addition to the UNIC range offers unrivalled lifting power with its class-beating minimal dimensions and weight. The URW-245 is the ideal machine for in-between floor operations and fits easily into goods lifts without the need for disassembly.

ADDITIONAL FEATURES



Radio remote control



Full safe load indicator

CRANE SPECIFICATIONS

Crane capacity	capacity:	2.4t x 1.5m
Max working radius	max:	5.85m
Max lifting height	approx:	6.3m
Rope length	max:	10.6m (4 fall), 21.3m (2 fall), 42.7m (1 fall),
Dimensions	folded:	2150mm (l) x 600mm (630mm with 180mm tracks) (w) x 1320mm (h)
Weight	unladen:	1500kg
Point loadings	Due to the many variables involved, point loadings are only available on request	
Hook speed	approx:	13m/min (with 3 layers and 4 falls)
Telescopic system	boom length:	1.98 - 6.19m
	telescoping speed:	4.21m/14 seconds
	boom type:	5 section hydraulically telescoping boom, hexagonal box construction
Derricking angle/speed	approx:	0 - 80°/10 seconds
Stewing angle/speed	approx:	360° (continuous) 2.0min rpm
Traction system	drive:	hydrostatic, step-less forward and reverse
	travel speed:	0 - 2.1km/h (low), 0 - 3.8km/h (high)
	gradability:	20°
	track ground length:	1050mm
	track ground pressure:	47kPa (0.48kg/cm ²) (with 150mm tracks) 39kPa (0.40kg/cm ²) (with optional 180mm tracks)
	track width:	150mm, 180mm
Engine	manufacturer:	Mitsubishi
	fuel:	petrol (LPG dual option)
	maximum output:	6.6kW (9PS) / 1800min rpm
	starting method:	electric and recoil start as standard
	tank capacity:	6 litres
Standard equipment	computer controlled moment limiter (safe load indicator), radio remote control, overwinding alarm, computer controlled intelligent voice warning system, multi-function operation by radio remote control, intelligent throttle activation, automatic hook stow, overload warning alarms, overload warning lamps	
Optional equipment	1 fall hook block, 2 fall hook block, LPG dual power, low marking tracks, 180mm tracks, searcher hook	

SECOND STAGE EXTENDED 1.98 - 3.05M BOOM LENGTH							
Working radius	m	up to 1.3	1.5	1.8	2.0	2.5	2.71
Outrigger	kg	2,400	2,400	1,960	1,760	1,400	1,350
	kg	1,150	1,150	700	550	330	310
THIRD STAGE EXTENDED 3.05 - 4.11M BOOM LENGTH							
Working radius	m	up to 1.5	2.0	2.6	3.0	3.5	3.77
Outrigger	kg	1,300	1,300	1,300	1,060	830	710
	kg	350	350	350	230	170	150
FOURTH STAGE EXTENDED 4.11 - 5.15M BOOM LENGTH							
Working radius	m	up to 2.5	3.0	3.7	4.0	4.5	4.81
Outrigger	kg	660	660	660	590	420	400
	kg	170	170	170	150	100	80
FIFTH STAGE EXTENDED 5.15 - 6.19M BOOM LENGTH							
Working radius	m	up to 3.5	4.0	4.5	5.0	5.5	5.85
Outrigger	kg	450	450	400	360	250	220
	kg	150	150	100	80	60	50



DIMENSIONS

