



VO-36-I/N

Articulated Overcenter Aerial



FEATURES INCLUDED IN THE VO-36-I/N

PLATFORM

The closed fiberglass platform is 24 in. x 24 in. x 42 in. (.61m x .61 m x 1.07m) with an inside and outside step for easy access. Leveling is automatic by a totally enclosed #60 chain and 1/2" diameter fiberglass rod parallelogram system.

BOOM ASSEMBLY

The lower boom consists of a 6 in. x 8 in. (.15m x .20m) rectangular steel section. The lower boom articulates from horizontal to 40° past vertical for a total range of 130°. The upper boom consists of a 6 in. x 6 in. (.15m x .15m) steel section. The upper boom articulates 190° relative to the lower boom. The upper boom is actuated at the knuckle by a hydraulic cylinder and a four bar linkage. Non-lube bushings are used at all pivot points. The hydraulic hoses are protected in all areas of boom movement by woven nylon hose protectors.

PEDESTAL/HYDRAULIC OIL RESERVOIR

The pedestal is a tubular shape with an access opening on both sides. The top plate is 1-1/4 in (32 mm) thick and machined flat to support the rotation bearing. The hydraulic oil reservoir is an integral part of the pedestal. Sight gauges are provided to check the fluid level. The capacity of the reservoir is 12 gallons (45 L).

CYLINDERS

Cylinders are threaded end cap design and equipped with dual holding valves recessed into the base of each cylinder to prevent movement in case of hose failure. Bleed down ports are provided in case of hydraulic failure.

ROTATION

Rotation is 370° non-continuous with a mechanical stop. Rotation is accomplished by a hydraulically driven worm and spur gear set acting on a shear-ball rotation bearing. The critical bolts holding the turret to the rotation bearing and the bearing to the pedestal are SAE grade 8. These critical bolts are marked with a torque seal indicator to provide a quick means to inspect for loosening. A slotted adjustment is provided for pinion and rotation gear clearances. An external hex drive is provided for manual rotation in case of hydraulic failure.

CONTROL VALVES

Full pressure control valves at the platform and the turret control the rotation and the upper/lower boom assembly movements. The individual control levers at the platform have self centering locking handles. The optional Unitrol single lever control with a safety trigger is available. An emergency stop valve is also located at the platform controls. The turret controls are equipped with a manual selector valve to override the platform controls and they also serve as the emergency stop from lower controls.

ELECTRICAL INSULATION SPECIFICATIONS

The upper boom is tested and certified for electrical work at 46 KV and below in accordance with ANSI A92.2 requirements.

LUBRICATION

Non-lube bearings are used at all points of motion. The rotation bearing and leveling system are the only components that require lubrication.



VO-36-I/N

Articulated Overcenter Aerial



GENERAL SPECIFICATIONS

(Based on 40 in. (1.02m) Frame Height)

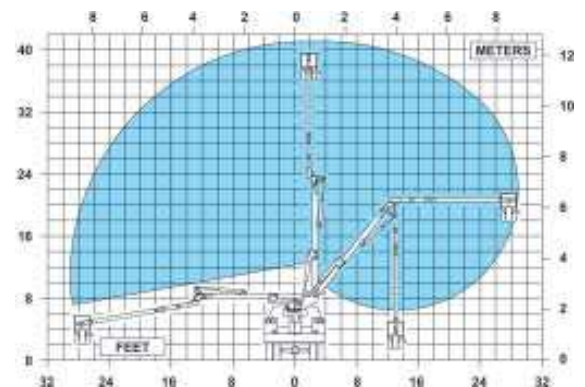
	VO-36-I	VO-36-N
Horizontal Reach Overcenter and Non-overcenter	29 ft. 1 in. (8.85 m)	29 ft. 1 in. (8.85 m)
Standard Platform Capacity	300 lbs. (136 kg)	300 lbs. (136 kg)
Maximum Platform Capacity	400 lbs. (181 kg)	400 lbs. (181 kg)
Lower Boom Lift Eye Capacity	700 lbs. (318 kg)	700 lbs. (318 kg)
With Standard Pedestal		
Height to Bottom of Platform	36 ft. 4 in. (11.07 m)	36 ft. 4 in. (11.07 m)
Working Height	41 ft. 4 in. (12.60 m)	41 ft. 4 in. (12.60 m)
Stowed Travel Height	10 ft. 4 in. (3.15 m)	10 ft. 4 in. (3.15 m)
Weight of Lift	2180 lbs. (989 kg)	2315 lbs. (1050 kg)
Hydraulic System		
Operating Pressure	2500 PSI (176 kg/cm ²)	2500 PSI (176 kg/cm ²)
Flow Rate	3 GPM (11.4 lpm)	3 GPM (11.4 lpm)
Filtration	10 micron return 100 mesh suction	10 micron return 100 mesh suction
System Type	Open center	Open center
Power Source	PTO pump Belt Drive System	PTO Pump Belt Drive System

NOTE: 1. Specifications may vary without prior notification.
2. Required GVWR can vary significantly with chassis, lift mounting location, service body, accessories, and desired payload.

Options

- Various Platforms, Liners & Covers
- Continuous and Unrestricted Rotation
- Two-Speed Manual Throttle-Control
- Emergency Power
- Category B Dielectric Testing & Certification
- Outrigger Boom Interlock System
- Hydraulic Tool Circuit at the Platform
- Outriggers and Torsion Bars
- Hydraulic Tool Power at the Ground Controls
- Lower Boom Insert for 12" Insulation Gap (VO-36-I)

VO-36 Platform Travel



TIME
MANUFACTURING COMPANY
P. O. Box 20368
Waco, TX 76702-0368
Tel.: 254-399-2100
Fax: 254-399-2651
www.timefmg.com



Articulation allows for easy accessibility.



Compact travel height in stowed position.