

**NEW!**



# VST-36/40/47/52-I

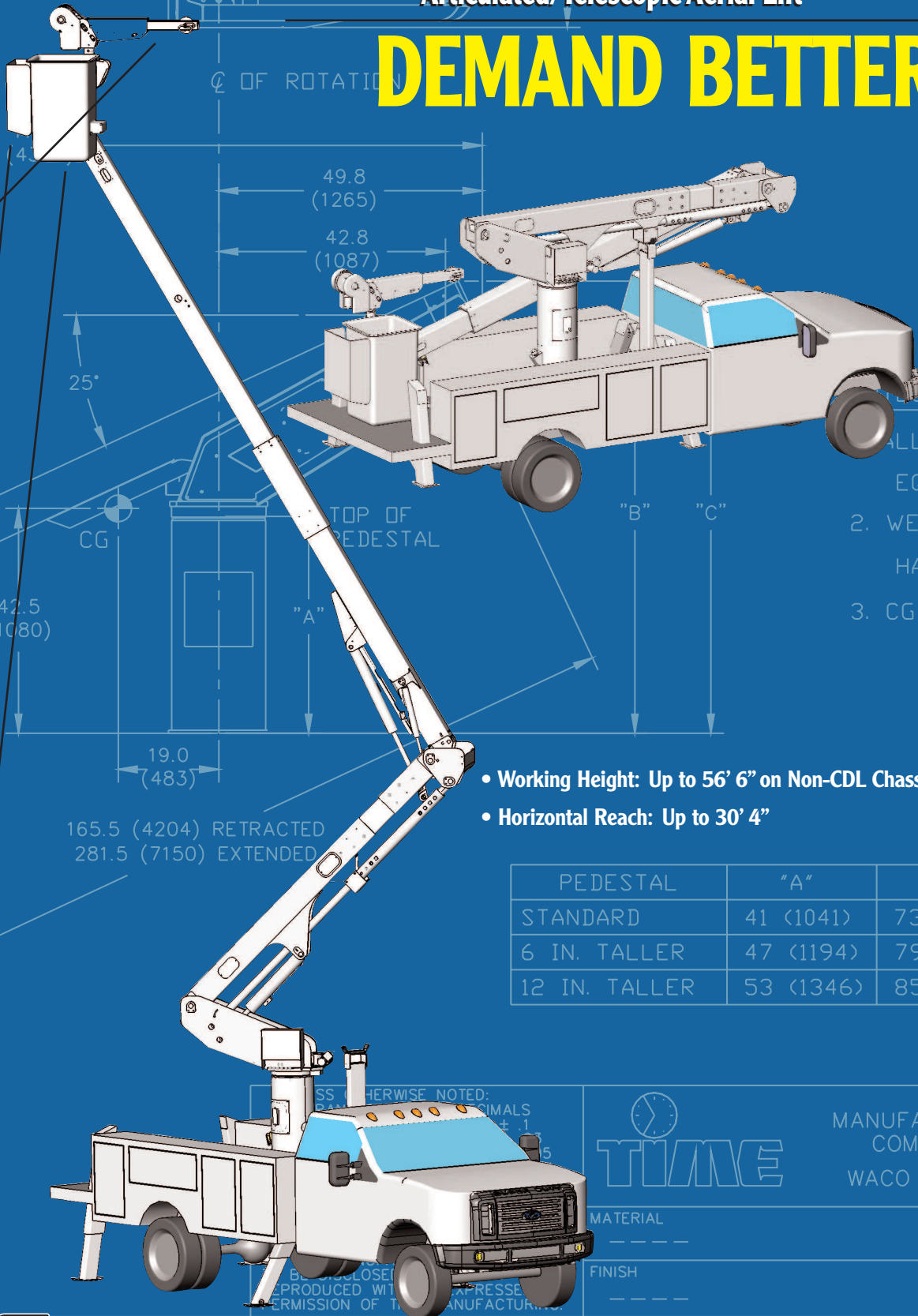
Articulated/Telescopic Aerial Lift

## DEMAND BETTER

Up to 1000 lbs.  
of Jib Capacity

Up to 600 lbs.  
of Platform  
Capacity  
w/out Jib

180° Hydraulic  
Platform Rotation



- Working Height: Up to 56' 6" on Non-CDL Chassis
- Horizontal Reach: Up to 30' 4"

| PEDESTAL      | "A"       | "B"         |
|---------------|-----------|-------------|
| STANDARD      | 41 (1041) | 73.6 (1870) |
| 6 IN. TALLER  | 47 (1194) | 79.6 (2027) |
| 12 IN. TALLER | 53 (1346) | 85.6 (2178) |

UNLESS OTHERWISE NOTED:  
DIMENSIONS ARE IN INCHES AND DECIMALS  
ARE TO THE NEAREST .1

**TIME**

MANUFACTURING  
COMPANY  
WACO, TEXAS

MATERIAL

FINISH



For more information about the All-New VST-I series or any of the other outstanding VERSALIFT machines, contact your authorized VERSALIFT Distributor or call 1.800.825.1085



# VST-36/40/47/52-I

## Articulated/Telescopic Aerial Lift

### GENERAL SPECIFICATIONS

(Based on 40" frame)

|                           | VST-36-I  | VST-40-I  | VST-47-I  | VST-52-I  |
|---------------------------|-----------|-----------|-----------|-----------|
| Horizontal reach          | 26'-2"    | 30'-2"    | 30'-9"    | 30'-4"    |
| Max platform capacity     | 600 lbs.  | 600 lbs.  | 500 lbs.  | 500 lbs.  |
| Platform rotation         | 180°      | 180°      | 180°      | 180°      |
| Max jib capacity          | 1000 lbs. | 1000 lbs. | 1000 lbs. | 1000 lbs. |
| Bottom of platform height | 36'-4"    | 40'-4"    | 46'-10"   | 51'-6"    |
| Working height            | 41'-4"    | 45'-4"    | 51'-10"   | 56'-6"    |
| Stowed travel height      | 10'-6"    | 10'-6"    | 11'-0"    | 11'-6"    |

### BOOM ACTION

|                               |             |             |             |             |
|-------------------------------|-------------|-------------|-------------|-------------|
| Outer/Inner boom articulation | -25 to +85° | -25 to +85° | -25 to +85° | -25 to +85° |
| Inner boom extension          | 79"         | 103"        | 103"        | 53"         |
| Lower boom articulation       | 0 to 87°    | 0 to 87°    | 0 to 84°    | 0 to 84°    |
| Rotation                      | 360°        | 360°        | 360°        | 360°        |

### INSULATION (where applicable)

|                           |     |     |     |     |
|---------------------------|-----|-----|-----|-----|
| Upper boom insulation gap | 46" | 46" | 64" | 64" |
| Lower boom insulation gap | 12" | 12" | 12" | 12" |

### VEHICLE REQUIREMENTS

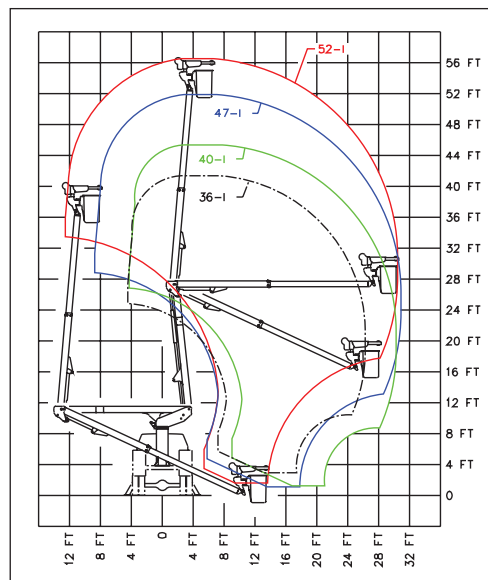
|                       |             |             |             |             |
|-----------------------|-------------|-------------|-------------|-------------|
| Cab to axle (minimum) | 60"         | 84"         | 84"         | 102"        |
| GVWR                  | 17,500 lbs. | 17,500 lbs. | 17,500 lbs. | 24,000 lbs. |

#### NOTE:

- Specifications may vary without prior notification.
- Required GVWR can vary significantly with chassis, lift mounting location, service body, accessories, and desired payload.

### OPTIONS

- Auxiliary Outriggers
- Second Set of Tool Power Ports
- Lifting Eye
- Emergency Power
- Two-Speed Manual Throttle Control
- Hydraulic or Manual Jib and Winch Available
- Various Pedestal Heights



  
**TIME**  
 MANUFACTURING COMPANY  
 P.O. Box 20368  
 Waco, TX 76702-0368  
 254.399.2100  
 Fax: 254.399.2651  
 1.800.825.1085  
 www.timemfg.com