



VST-7500

Articulated/Telescopic Aerial Lift



Up to 800 lb.
Platform Capacity



Up to 2,000 lbs.
Material Handling
Available

DEMAND BETTER

- Working Height: Up to 80'
- Horizontal Reach: Up to 46' 10"
- Jib Capacity: Up to 2,000 lbs.
- Platform Capacity: Up to 800 lbs.

108" Upper Boom Insulation Gap

24" Lower Boom Insert



For more information about the VST-7500 or any of the other outstanding VERSALIFT machines, contact your authorized VERSALIFT Distributor or call 1.800.825.1085.



VST-7500

Articulated/Telescopic Aerial

GENERAL SPECIFICATIONS

Horizontal Reach	VST-7500 46 ft. 10 in. (14.3 m)
Maximum Platform Capacity	800 lbs. (360 kg)
Lower Boom Lift Eye Capacity	1,500 lbs. (680 kg)
Maximum Jib Capacity (Optional)	2,000 lbs. (907 kg)

STANDARD PEDESTAL

(Based on 40 in. (1.01 m) Frame Height)

Height to Bottom of Platform	75 ft. 0 in. (22.9 m)
Working Height	80 ft. 0 in. (24.4 m)
Stowed Travel Height	12 ft. 5 in. (3.8 m)
Weight of Lift without Outriggers	8,500 lbs (3,850 kg)

HYDRAULIC SYSTEM

Operating Pressure	3,000 psi (205 Bars)
Flow Rate	10 gpm (38 lpm)
Filtration	10 micron return 100 mesh suction
System Type	Open Center
Power Source	PTO Pump

BOOM ACTION

Outer Boom Travel	-25° to +75°
Inner Boom Extension	138 in. (3.5 m)
Lower Boom Travel	0° to +88°3
Rotation	360° Continuous

INSULATION GAPS

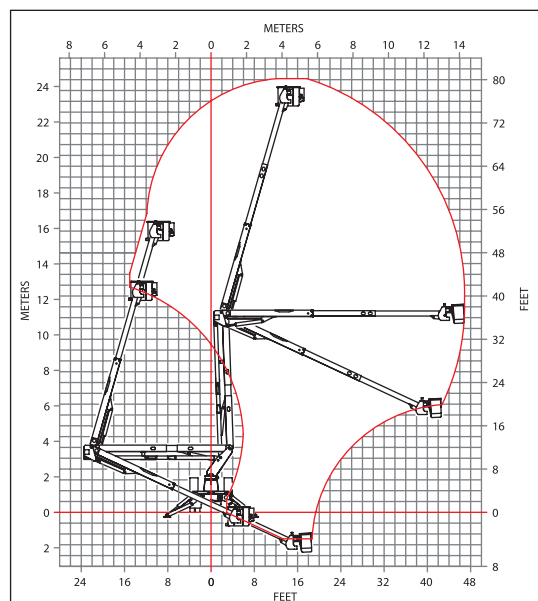
Upper Boom	108 in. (2.7 m)
Lower Boom	24 in. (0.61 m)

NOTE:

- Specifications may vary without prior notification.
- Required GVWR can vary significantly with chassis, lift mounting location, service body, accessories, and desired payload.
- Boom articulation is +/- 2°.



- Multiple Outrigger Options
- Second Set of Tool Power Ports
- Lifting Eye
- Outrigger/Boom Interlock System
- Emergency Power
- Material Handling Jib & Winch with Hydraulic Extension and Articulation
- Two-Speed Manual Throttle Control




TIME
 MANUFACTURING COMPANY
 P.O. Box 20368
 Waco, TX 76702-0368
 254.399.2100
 Fax: 254.399.2651
 1.800.825.1085
 www.timemfg.com