



Volvo Construction Equipment

# SD75, SD115, SD135

VOLVO SINGLE DRUM COMPACTOR 8-14.4 t 75 - 110 kW



Courtesy of Machine.Market

# Powered to perform.

Volvo proudly introduces the SD75, SD115 and SD135 soil compactors – powerful machines designed to deliver superior compaction. A choice of amplitude, variable frequencies, centrifugal force and a heavy drum weight all combine to deliver high density levels in less time. Experience quality compaction at its best with Volvo.



## Drum forces

Whether you're compacting thin soil layers or thick lifts, experience superior results in all applications and material depths by simply flipping a switch and selecting high or low amplitude.



## Frequency choices

Easily adjust the vibration frequency from the operator console to compensate for changing soil types and conditions – increasing productivity and performance. Two frequency settings are standard and for even greater versatility, five choices are optional.



## Padfoot shell

With minimal tools and equipment, the compactor is quickly and easily converted from smooth to padfoot drum by clamping on a padfoot shell. This allows the machine to work in different applications and increases versatility.



## Gradeability

The Volvo traction system provides excellent climbing and traction capabilities in difficult applications such as steep inclines or slippery surfaces. The system prevents wheel or drum spin, improving gradeability, performance and productivity.



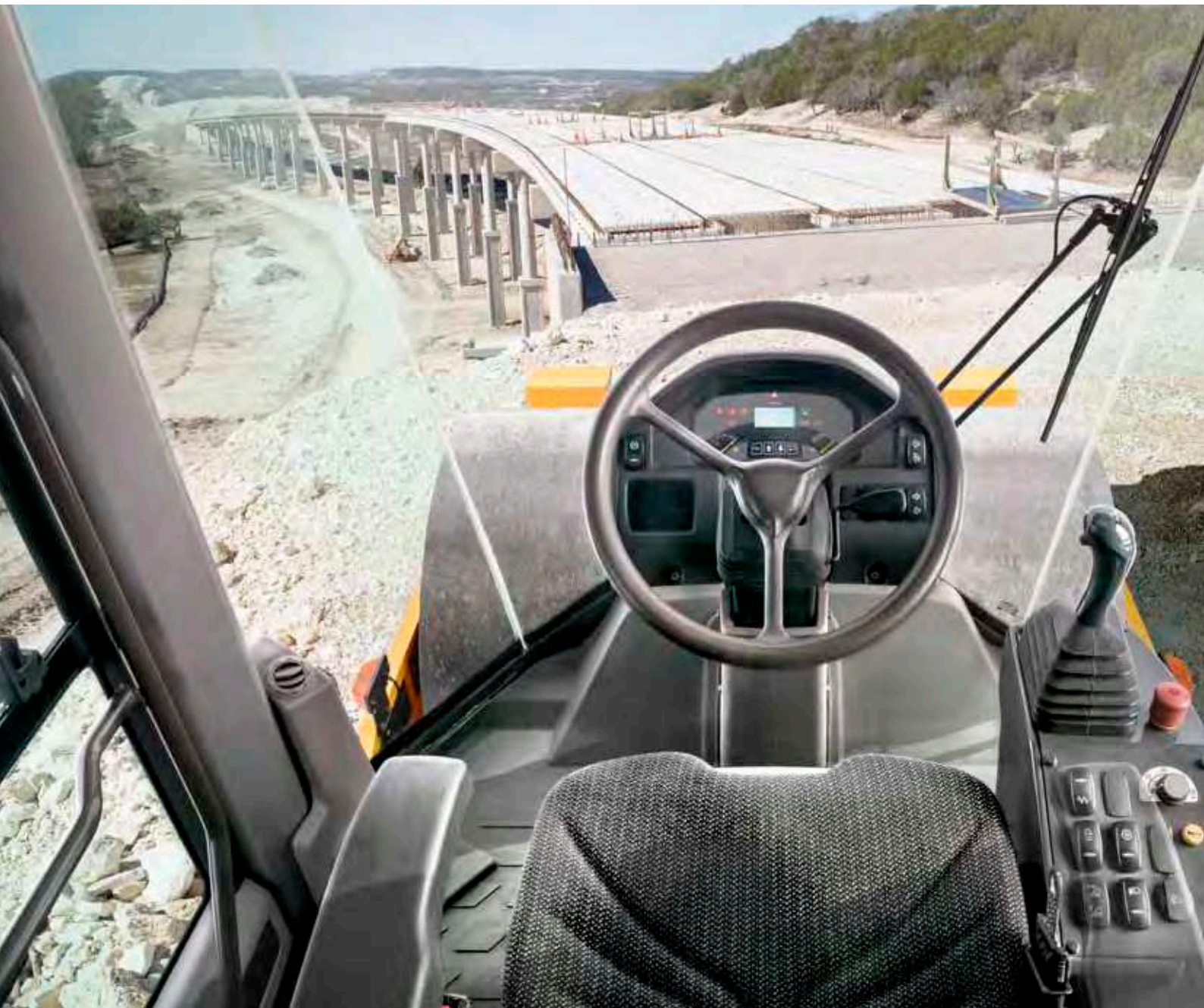


#### Centrifugal force

The combination of high centrifugal force and heavy drum weight facilitates excellent compaction – allowing you to achieve material target density in fewer passes.



# The Volvo experience.



## Volvo cab

The ROPS/FOPS certified cab provides a safe and comfortable working environment with an efficient heating and air conditioning system and all-around visibility from large glazed areas. With floor to ceiling cab glass, the operator has an excellent forward drum view as well as superior front and rear visibility.

Step inside the premium Volvo designed cab and experience class-leading low noise levels, ultimate comfort and a productive working environment. Safe, spacious and with excellent all-around visibility, operators will work efficiently with less fatigue in a Volvo compactor. See more and do more in comfort with Volvo.



### Display

The conronic instrument panel continuously monitors the machine's operation and performance in real time. Key diagnostic and operational information is clearly presented to the operator – reducing the need for regular physical checks and increasing uptime.



### Ample space

The spacious operator environment features ample storage and leg room, ergonomic controls, an adjustable seat and a cup holder – all adding up to more comfort and reduced fatigue.



### Work in comfort

The Volvo cab offers class-leading low noise levels. The moulded roof, wall segments and large surfaces are made of soft, noise-absorbing material. Shock absorbing cab mounts reduce vibration and noise levels for increased comfort.



# Packed with performance.

## Volvo Contronics

The conronic instrument panel continuously monitors the machine's operation and performance in real time.



### Centrifugal force

High centrifugal force and heavy drum weight facilitates excellent compaction and target density in fewer passes.

## Clamp-on padfoot

For increased versatility, easily convert the compactor from smooth to padfoot drum by clamping on a padfoot shell.



### Drum forces

Simply select high or low amplitude depending on the application and material depth.

## Maneuverability

Articulation joint provides up to +/- 17 degree oscillation angle and a frame articulation of +/- 38 degrees, for greater stability and maneuverability.





#### Volvo cab

The ROPS/FOPS certified cab provides a safe and comfortable working environment with excellent all-around visibility.

#### Smart power\*

Operate in smart power mode for up to 30% reduced fuel consumption, lower engine noise levels and emissions.



#### Volvo engine

Volvo's premium Stage IIIB engine delivers high torque at low rpm for superior performance and low fuel consumption.

#### Daily check points

Key service check points are grouped on one side of the compactor.

#### Gradeability

The Volvo traction system provides excellent climbing and traction capabilities in difficult applications such as steep inclines or slippery surfaces.



#### Frequency choices

Easily change the vibration frequency from the operator console to compensate for changing soil types and conditions.

\* Available on SD115 and SD135.

# Volvo efficiency.

Volvo delivers powerful and efficient compaction. Capitalize on Volvo's smart power mode and benefit from a 30% reduction in fuel consumption. The high performance, premium Volvo engine supplies all the power you need to compact thick lifts and the most difficult materials. Reduce fuel consumption and save money with Volvo.

## Serviceability

Key service check points are grouped on one side of the compactor to ensure regular maintenance is straightforward and uptime is maximized.



## Service Network

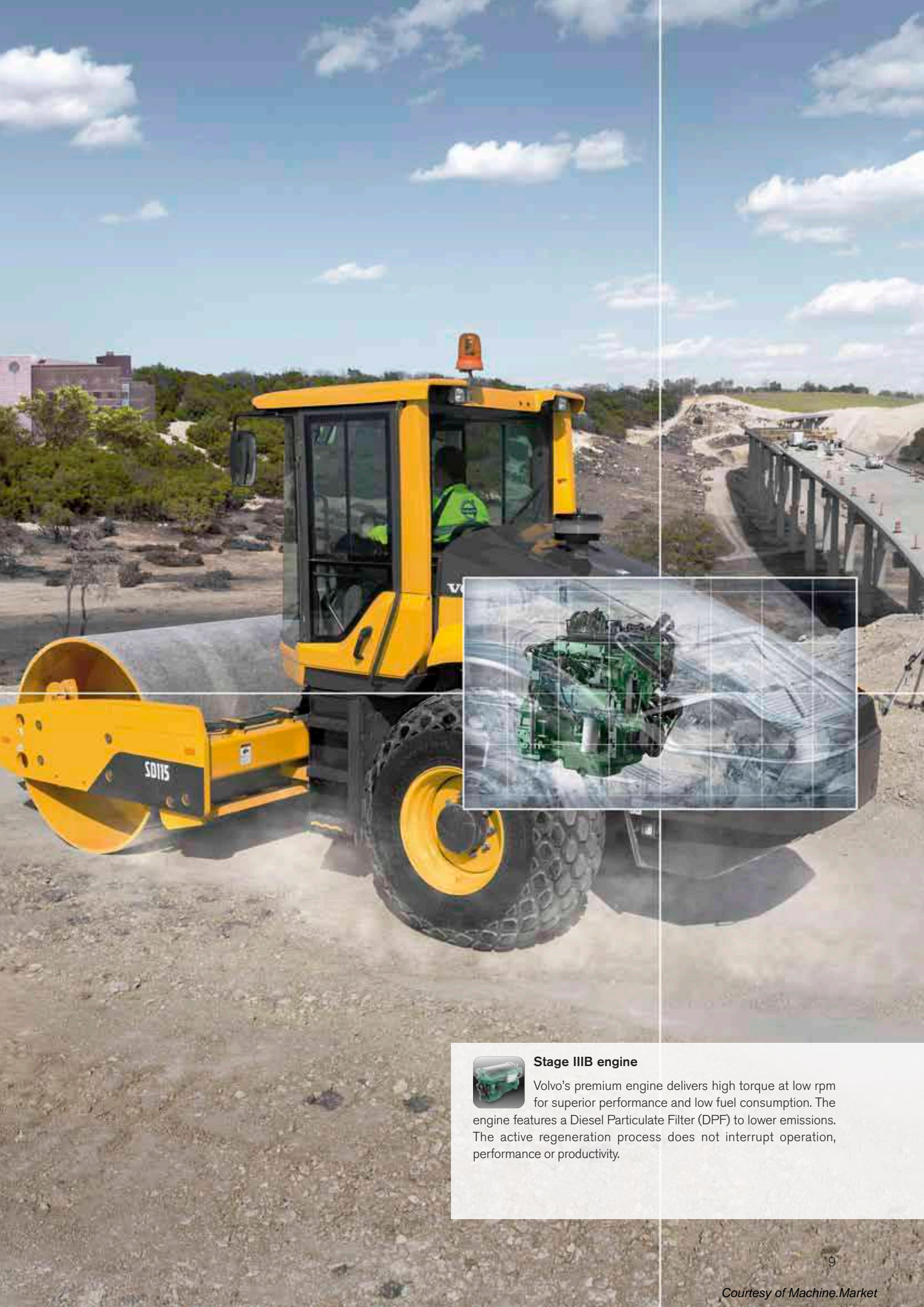
In order to respond to your needs faster, a Volvo expert is on the way to your job site from one of our Volvo facilities. With our extensive infrastructure of technicians, workshops and dealers, Volvo has a comprehensive network to fully support you using local knowledge and global experience.

## Smart power\*

Operate in smart power mode for up to 30% reduced fuel consumption. This efficient mode significantly reduces engine noise levels and emissions without impacting compaction performance. The operator easily switches between modes via a switch on the control panel.

\*Available on SD115 and SD135.





#### **Stage III B engine**

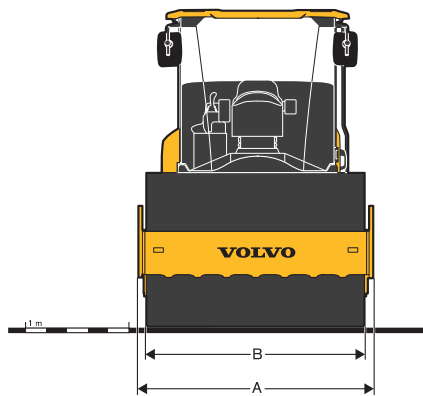
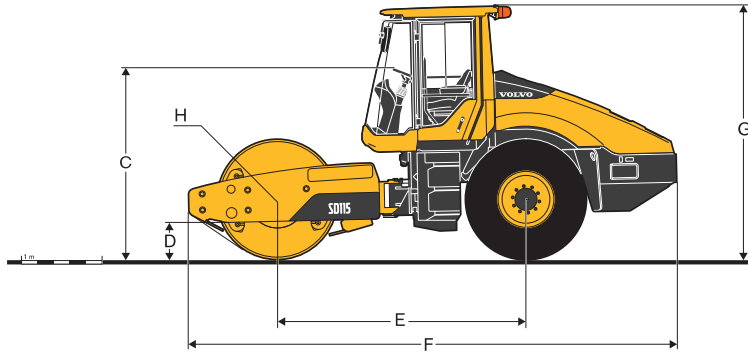
Volvo's premium engine delivers high torque at low rpm for superior performance and low fuel consumption. The engine features a Diesel Particulate Filter (DPF) to lower emissions. The active regeneration process does not interrupt operation, performance or productivity.

# Specifications.

	SD75		SD115		SD135		
	Smooth	Padfoot	Smooth	Padfoot	Smooth	Padfoot	
<b>Machine Weights (inc. cab &amp; inside scraper) Per ISO 6013 &amp; EN474(ISO 20474)</b>		<b>D3.8</b>		<b>D4</b>		<b>D4</b>	
Operating Weight (CECE)	kg	7 860	8 210	12 050	12 390	12 700	13 090
Static Weight @ Drum	kg	3 900	4 250	6 500	6 890	7 200	7 590
Static Weight @ Tyres	kg	3 960	3 960	5 550	5 500	5 500	5 500
Shipping Weight	kg	7 750	8 100	11 920	12 260	12 570	12 960
<b>Drum</b>							
Width	mm	1 676	1 676	2 134	2 134	2 134	2 134
Diameter	mm	1 219	1 219	1 500	1 295	1 510	1 510
Shell Thickness	mm	22	22	25	25	30	30
Diameter Over Pad Feet	mm		1 372		1 550		1 764
Pad Feet	number of	-	84	-	112	-	120
Pad Height	mm	-	75	-	127	-	127
Pad Tip Area	cm <sup>2</sup>	-	125	-	135.3	-	135.3
<b>Vibration</b>							
Frequency	Hz	30.8/33.8	27.5/33.8	30.8/33.8	27.5/33.8	30.8 / 33.8	27.5/33.8
Optional 5 Frequency ( High Amp )	Hz	22.5 - 30.8	22.5 - 27.5	23.3 - 30.8	22.5 - 27.5	23.3 - 30.8	22.5 - 27.5
Centrifugal Force	High Amp	kN	143	133	258	270	281
	Low Amp	kN	104	135	207	264	206
Nominal Amplitude	High Amp	mm	1.98	1.98	1.92	2.22	1.9
	Low Amp	mm	1.2	1.33	1.29	1.44	1.17
<b>Propulsion</b>							
Type	Hydrostatic						
Tyre	14.9-24 R3 6PR TT	14.9-24 R1 6PR TL	23.1-26 R3 8PR TT	23.1-26 R1 8PR TL	23.1-26 R3 8PR TT	23.1-26 R1 8PR TL	
Drum Drive	LSHT Motor		Planetary Gear Box		Planetary Gear Box		
<b>Travel Speed</b>							
High	km/h	0-13.4	0-11.7	0-10.1	0-9.7	0-12.9	0-14.1
Low	km/h	0-8.5	0-7.8	0-6.2	0-5.7	0-5.0	0-5.4
<b>Engine</b>							
Make / Model	Volvo D3.8 Tier IV			Volvo D4 Tier IVi			
Engine Type	Turbocharged 4 cylinder			Turbocharged 4-cylinder			
Rated Power @ 2200 rpm	kW	75			110		
<b>Electrical System</b>							
Voltage (Negative ground)	Volt	12			24		
Alternator	Ah	100			120		
Batteries	CCA	1 x 785			2 x 1125		
<b>Brakes</b>							
Service	Hydrostatic						
Parking / Secondary	Spring-applied, hydraulically released on drum & axle						
<b>Miscellaneous</b>							
Articulation Angle	°	+/- 38			+/- 38		
Oscillation Angle	°	+/- 15			+/- 17		
Fuel Capacity	L	197			256.2		
Hydraulic Oil Capacity	L	81			106		
Gradeability (theoretical)	%	65	60	65	60	65	55

Product improvement is a continuing goal at Volvo. Designs and specifications are subject to change without notice or obligation.





**DIMENSIONS**

	Smooth drum	Padfoot drum
<b>SD75</b>		
	mm	mm
A Machine Width	1 830	1 830
B Drum Width	1 676	1 676
C Top of steering wheel	2 225	2 301
D Curb Clearance	385	445
E "Wheel" Base	2 677	2 677
F Overall Length	5 044	5 044
G Height with Cab	2 950	3 026
H Rolling/Drum Radius	610	696
<b>SD115</b>		
A Machine Width	2 286	2 286
B Drum Width	2 134	2 134
C Top of steering wheel	2 346	2 346
D Curb Clearance	478	478
E "Wheel" Base	3 095	3 095
F Overall Length	6 068	6 068
G Height with Cab	3 090	3 090
H Rolling/Drum Radius	750	750
<b>SD135</b>		
A Machine Width	2 286	2 286
B Drum Width	2 134	2 134
C Top of steering wheel	2 351	2 346
D Curb Clearance	483	610
E "Wheel" Base	3 095	3 095
F Overall Length	6 068	6 068
G Height with Cab	3 090	3 090
H Rolling/Drum Radius	755	882

**SELECTION OF VOLVO OPTIONAL EQUIPMENT**

Traction control / Flow divider



Impact Meter and VPM



Padfoot drum



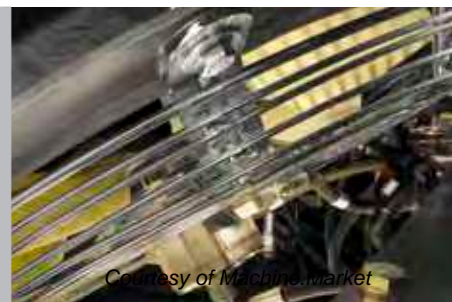
CompAnalyzer



Diamond tread and traction tire



Reversible fan



**VOLVO**

**Volvo Construction Equipment**  
[www.volvoce.com](http://www.volvoce.com)