

VOLVO SINGLE DRUM COMPACTOR

SD75

7.5-8.4 t 99 hp



POWERFUL PERFORMANCE.

The SD75 provides the energy, reliability and strength you need, when you need it. Powerful drum performance enables you to achieve high density levels in a shorter amount of time. More power, greater efficiency: it's standard with the SD75.



Frequency choices

Vibration frequency is easily modified to compensate for changing soil types and conditions – increasing productivity and performance. For even greater versatility, a unique five frequency feature is also available.



Drum forces

Dynamic drum forces are increased or decreased with the flip of a switch to adapt to a range of conditions – from thin soil layers and easy-to-compact materials to thick lifts of more difficult-to-compact materials and for cohesive or granular soils.



5 Frequencies



High amplitude

Low amplitude

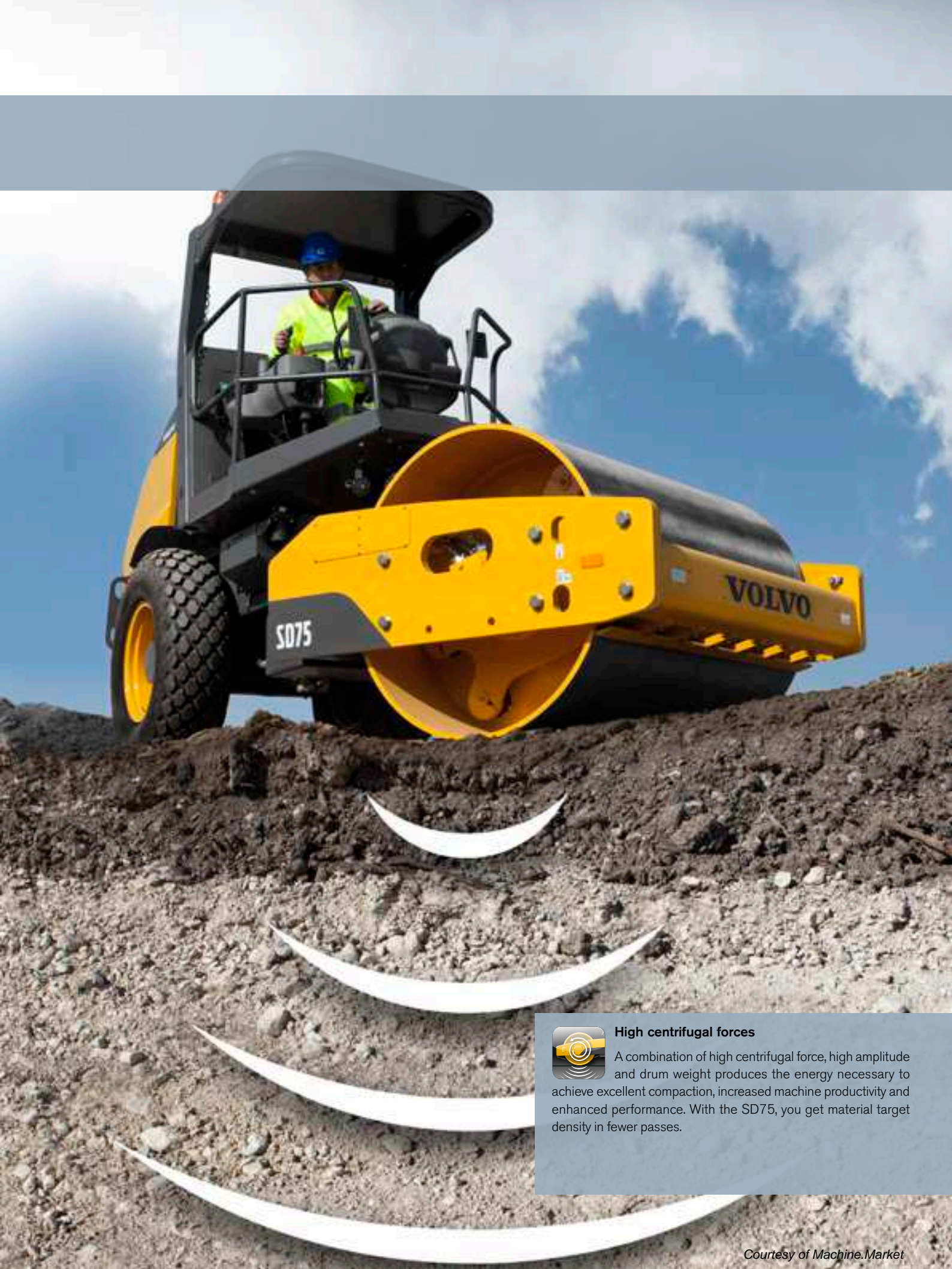


Articulation/oscillation joint

The center joint provides +/- 38 degrees of articulation left and right for maneuverability and +/- 15 degrees of drum frame to tractor frame oscillation for stable, flexible and uniform machine performance and greater operator comfort over rough terrain. Because the drum stays in full contact with the material surface, compaction is uniform.

Axle and Ultra-Grade® Traction System

Heavily constructed axle is integrated in the drive train for efficient rear-wheel drive. No-Spin® differential axle increases traction and precludes tire slippage, improving gradeability, performance and productivity. With the optional, unique Ultra-Grade® Traction System, the SD75 is surefooted and steady when operating on steep inclines or slippery surfaces.



High centrifugal forces

A combination of high centrifugal force, high amplitude and drum weight produces the energy necessary to achieve excellent compaction, increased machine productivity and enhanced performance. With the SD75, you get material target density in fewer passes.

THE VOLVO EXPERIENCE.

The SD75 is designed with all of your compaction applications in mind. With features to help you tackle even the most demanding jobs, the SD75 gives you the quality, reliability and safety that you expect from Volvo. Compaction becomes easier, more efficient and more effective.

All-around visibility

The seated operator has 1 meter by 1 meter visibility, increasing jobsite safety and decreasing the possibility of equipment damage due to bumps and scrapes.

New Volvo display

Centrally located LCD display panel provides clear and easy to understand information to the operator. A user friendly diagnostic system is also integrated into the panel.



Leveling blade

Optional steel blade with wear-hardened cutting edge handles leveling and backfilling jobs, increasing machine utility and versatility and eliminating the need for extra equipment on site.

Clamp-on padfoot shell

Optional two-piece shell kit and easily interchanged scraper bar easily convert the smooth drum into a versatile padfoot drum for changing job applications. Installation can be completed in less than one hour with few tools and minimal equipment.

Angled drum frame

The angled drum frame ensures clearance in the approach to steep slopes and when loading. The design eliminates the possibility of digging into the slope and prevents damage to the machine.



Cab

The optional industry-leading enclosed ROPS/FOPS cab provides comfort and flexibility for the operator, along with excellent all-around visibility. Controls and instruments are well-designed and ideally located.



Inside scraper

For those applications that require increased drum-cleaning capabilities, an additional scraper can be mounted to the inside of the drum frame. Available for smooth or padfoot drum.



Beacon and lights

Available as an option, work lights enable machine operation to continue after dark, increasing uptime while enhancing visibility for greater safety. Road lights allow safer machine transport, while the beacon promotes caution on the jobsite.

PACKED WITH BENEFITS.

ROPS/FOPS safety

Provides peace of mind and safety by protecting the operator in the event of machine rollover and/or overhead falling objects.

Two-speed transmission

Hydrostatic axle drive is equipped with a two-speed, variable piston transmission, for optimum work and transport speeds.



High Centrifugal Forces

Easily and variably adjustable from the operator's console, allowing versatile adjustment of force due to soil types and conditions.



High and low drum amplitude

Control panel switch provides a choice between high and low amplitude for application or material depth flexibility.

Clamp-on padfoot shell

Optional shell with scraper bar easily converts the smooth drum into a padfoot drum.



Variable frequencies

Two frequencies (five frequencies optional) are easily adjustable from the console for different soil types and conditions.



Stable maneuvering

Articulation joint provides +/- 17-degree oscillation angle and frame articulation of +/- 38 degrees, for greater stability and maneuverability.





All-around visibility

Excellent all-around visibility increases jobsite safety between personnel and decreases possibility of equipment damage.

Back-up alarm

Alarm automatically sounds when the machine is put in reverse, providing greater operator and site safety.

Powerful Volvo engine

The emission regulations certified Volvo Tier 4i engine delivers powerful, dependable performance.

No-Spin® axles

Heavy-duty, No-Spin® differential axles provide increased traction and gradeability by restricting the two wheels to the same rotational speed.

Seat switch with delay

Seat switch will shut down the engine if the operator leaves the seat for more than five seconds.



Daily checkpoints

Key daily checkpoints are conveniently and accessibly positioned for easy maintenance.

INTUITIVE MAINTENANCE.

Taking care of your compactor shouldn't be complicated. Volvo makes maintenance straightforward with helpful features including a machine-mounted service chart and comprehensive, detailed operations manuals. And with the SD75, environmental care is built right in – from the powerful Tier 4i engine down to the newly designed hydraulic fill.



Maintenance checkpoints

Key checkpoints are conveniently located within easy reach at ground level so that important maintenance tasks don't go overlooked. Sight gauges permit inspection of fluid levels and eliminate the need to open tank caps to perform simple checks.



Engine hood

The redesigned rear-hinged engine hood gives excellent, unobstructed ground-level access to the engine and major hydraulic components.

Dealer support comes standard

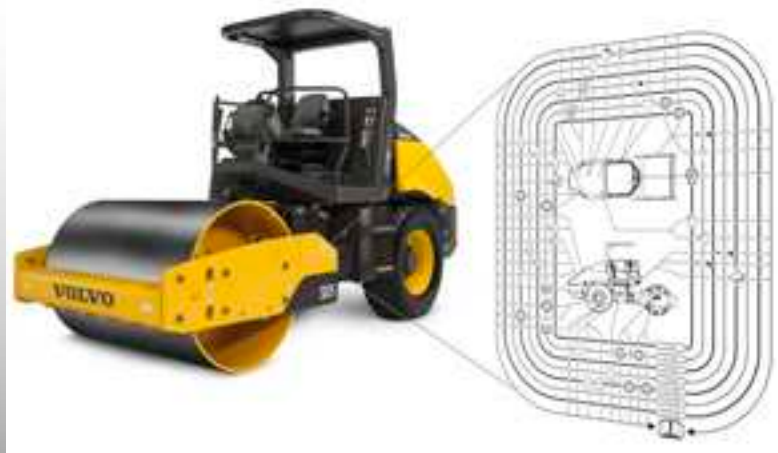
Your local Volvo dealer backs you and your operation with a ready supply of genuine Volvo parts that are perfectly matched to your machine. Your dealer is also ready to help you keep working with expert, trained service and support.

Tier 4i engine

The powerful engine you expect from Volvo now comes Tier IV certified. Perfectly matched power trains and components maximize performance in any application, all while achieving excellent fuel economy.

Service chart

Easy to understand and mounted to the fuel tank, the service chart details service intervals, checkpoints and lubrication information. Ensures that proper lubrication and maintenance procedures are followed on time and as directed, contributing to long life of the machine.



Tiltable operator platform

The forward-tilting operator platform provides convenient, unobstructed access at ground-level for easier hydraulic repairs.

Hydraulic test ports

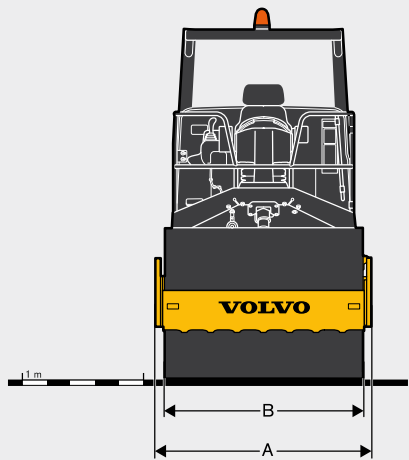
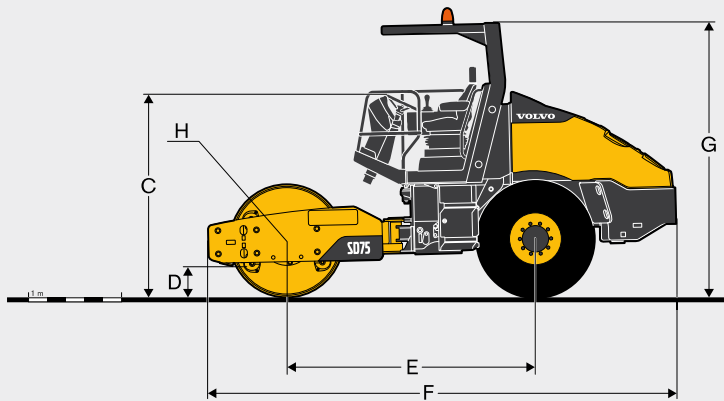
Hydraulic test ports are conveniently grouped and located, improving the quality of troubleshooting and decreasing the time of pressure testing. Eliminate the need to open the hydraulic circuit, therefore preventing contamination or possible leaks.

SPECIFICATIONS.

Model			SD75				
Drum type			Smooth		Padfoot		
Machine Weights (inc. ROPS)*							
Operating Weight (CECE)	kg	lb	7 528	16,596	8 403	18,525	
Static Weight @ Drum	kg	lb	3 672	8,095	4 099	9,037	
Static Weight @ Tires	kg	lb	3 856	8,501	4 304	9,489	
Shipping Weight	kg	lb	7 415	16,347	8 291	18,279	
Drum							
Width	mm	in	1 676	66	1 676	66	
Diameter	mm	in	1 219	48	-	-	
Shell Thickness	mm	in	22	0.87	-	-	
Diameter Over Pad Feet	mm	in	-	-	1 372	54	
Pad Feet	number of		-	-	84		
Pad Height	mm	in	-	-	76	3	
Pad Tip Area	cm2	sq in	-	-	125	19	
Vibration							
Frequency	Hz	vpm	31.5/33.5	1,890/2,010	27.5/34	1,650/2,025	
Optional 5 settings	Hz (vpm)		20.4/23.8/27.1/30.4/33.8 (1,225/1,425/1,625/1,825/2,025)				
Centrifugal Force	High	kN	lb	143	32,100	113	25,500
	Low	kN	lb	106	23,900	104	23,300
Nominal Amplitude	High	mm	in	1.98	0.078	1.69	0.066
	Low	mm	in	1.36	0.054	1.02	0.040
Propulsion							
Type System	Hydrostatic, two-speed motor on planetary axle w/ No-Spin® differential and two-speed drum with planetary gear reduction						
Tire Size	14.9-24 R3, 6PR TT						
Drum Drive	Planetary gear reduction						
Travel Speed							
	High	km/h	mph	13.8	8.7	12.5	7.9
	Low	km/h	mph	0-8.6	0-5.4	0 – 7.8	0-4.9
Engine							
Make / Model	Volvo D4 E4B Tier 4i						
Engine Type	Turbocharged 4-cylinder						
Rated Power @ Installed Speed	kW	hp	74	99.2	74	99.2	
Electrical System							
Positive grounded	Volt		12				
Alternator	100 Amps						
Batteries	CCA		1 x 785				
Brakes							
Service	Hydrostatic						
Parking / Secondary	Spring-applied, hydraulically released on axle and drum						
Miscellaneous							
Articulation Angle	°		+/- 38				
Oscillation Angle	°		+/- 15				
Fuel Capacity	L	gal	200	52.8	200	52.8	
Hydraulic Oil Capacity	L	gal	91	24	91	24	
Gradeability (theoretical)	%		75		60		

Product improvement is a continuing goal at Volvo. Designs and specifications are subject to change without notice or obligation.

* Weight with cab installed: 7 800 kg / 17,200 lb



DIMENSIONS

	Smooth drum		Padfoot drum		
	mm	in	mm	in	
A	1830	72	1830	72	
B	1676	66	1676	66	
C	2250	89	2250	89	
D	385	14	385	14	
E	2677	105	2677	105	
F	5044	199	5044	199	
G	2922	115	2922	115	
H	610	24	610	24	

SELECTION OF VOLVO OPTIONAL EQUIPMENT

Enclosed scraper



First aid kit and extinguisher brackets



Impact meter & VPM



Padfoot drum



Diamond tread and traction tires



VOLVO CONSTRUCTION EQUIPMENT

Volvo Construction Equipment is different. Our machines are designed, built and supported in a different way. That difference comes from an engineering heritage of over 180 years. A heritage of thinking first about the people who actually use the machines. About how to help them be safer, more comfortable, more productive. About the environment we all share. The result of that thinking is a growing range of machines and a global support network dedicated to helping you do more. People around the world are proud to use Volvo.

Not all products are available in all markets. Under our policy of continuous improvement, we reserve the right to change specifications and design without prior notice. The illustrations do not necessarily show the standard version of the machine.

VOLVO

Volvo Construction Equipment
www.volvoce.com

Ref. No 20032717-B
2012.11
Volvo, Global Marketing

English-22
COS

Courtesy of Machine.Market