

www.xcmg.com

TWCC75履带起重机

TWCC75 CRAWLER CRANE

本印刷品所包含的数据，会随着产品的不断升级而改变，请以实际产品为准
Pictures and data in this catalog will change with the update and modification of products, so please take the actual vehicle as reference.



TWCC75履带起重机

TWCC75 CRAWLER CRANE



015020

徐工集团 工程机械股份有限公司建设机械分公司

XCMG CONSTRUCTION MACHINERY CO., LTD. BUILDING MACHINERY CO.

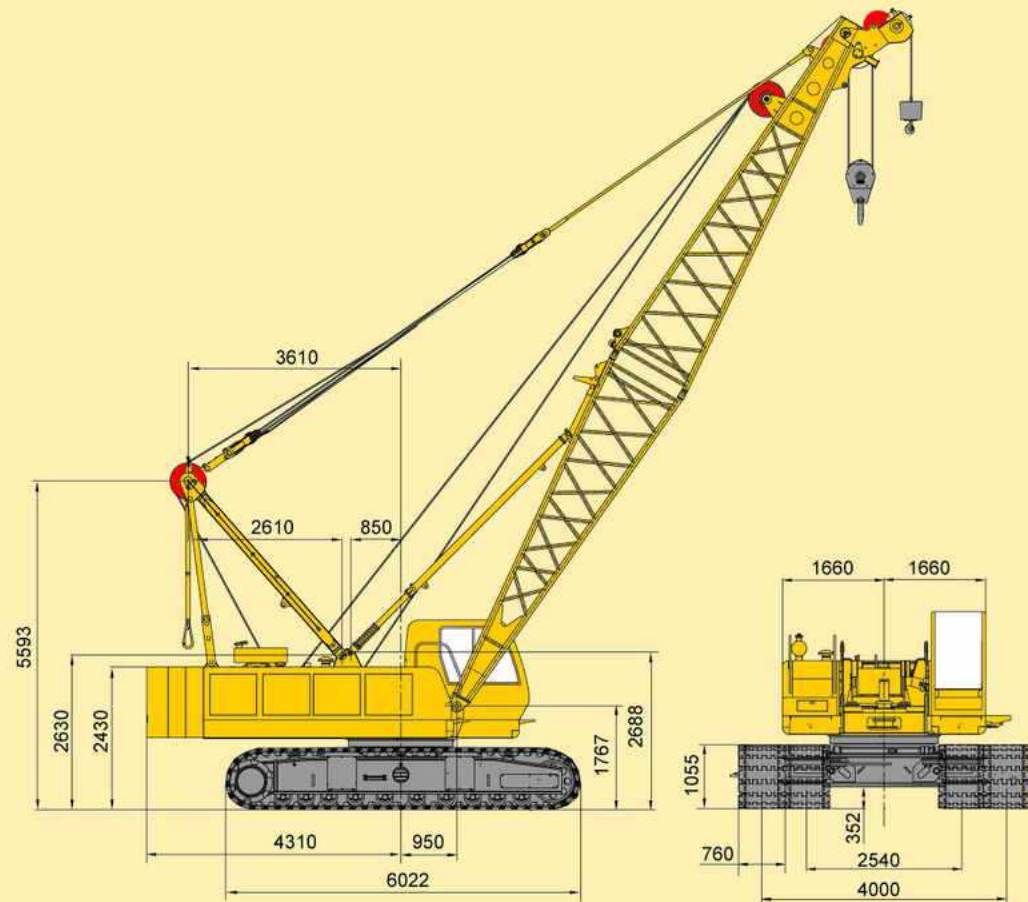
技术性能参数/整机基本尺寸 Technical Specification/Overall Dimension

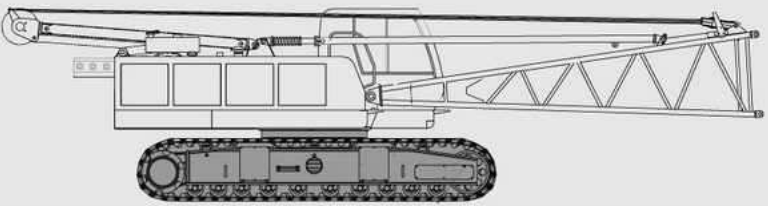
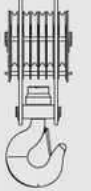

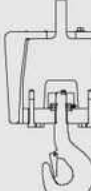
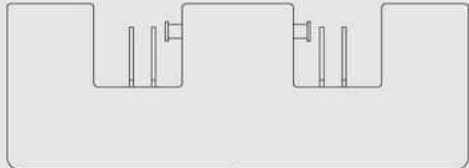
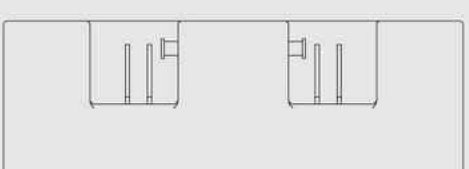
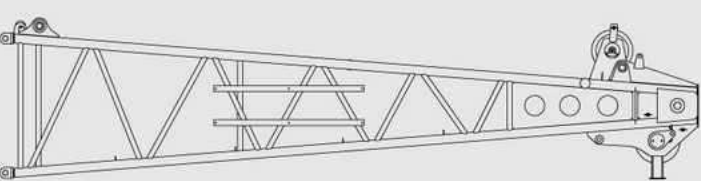
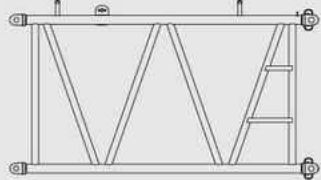
主要零部件 Main Parts

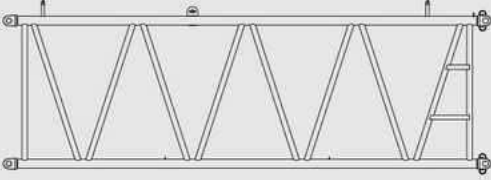
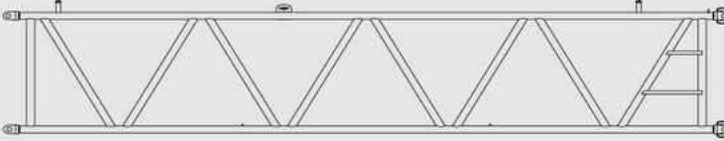
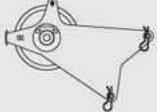
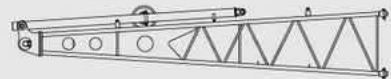
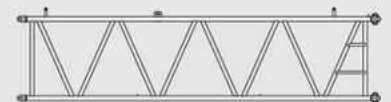
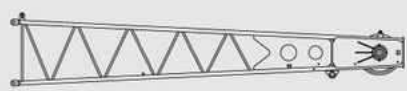
目录 CONTENTS

主要零部件 Main Parts	1
详细介绍 Brief Introduction	3
自拆装 Self Assembly & Disassembly	7
主臂臂节组合/主臂工况 Boom Combinations/Boom Working Condition	8
主臂作业范围 Boom Working Area	9
主臂工况载荷表 Boom Working Condition and Lifting Load Chart	10
副臂臂节组合/副臂工况 Fixed Jib Combinations/Jib Working Condition	11
副臂作业范围 Fixed Jib Working Area	12
副臂工况载荷表 Fixed Jib Working Condition and Lifting Load Chart	14

项目 Items	单位 Unit	数值 Data
最大额定起重量 Max. rated lifting capacity	t	75
基本型主臂 Basic boom	t	6.5
固定副臂 Fixed jib	t.m	280
最大起重力矩 Max. load moment	m	13~58
主臂长度 Main boom length	°	-3~80
主臂变幅角度 Main boom Luffing angle	m	9~18
固定副臂长度 Fixed jib length	m/min	120
起升机构最大单绳速度 (空载、第五层) Winch max. single line speed (no load, at 5th layer)	m/min	57
主臂变幅机构最大单绳速度 (第一层) Boom luffing gear max. single line speed (at 1st layer)	r/min	2.4
最大回转速度 Max. slewing speed	km/h	1.2
最高行驶速度 Max. travel speed	%	30
爬坡能力 Grade ability	MPa	0.087
平均接地比压 Mean ground pressure	kW	200
发动机功率 Engine output power	t	61
整机质量(主吊钩, 13米臂) Gross vehicle mass (including main hook block and 13m boom)	t	39
运输状态单件最大质量 Max. weight of single unit in travel configuration	m	12.6×3.32×3.23
运输状态单件(主机)最大尺寸 (长×宽×高) Max. dimension of single unit(basic machine) in travel configuration (L×W×H)		



	主机 Basic Machine	× 1
	长L	12600mm
	宽W	3320mm
	高H	3230mm
	重量Weight	39000kg
	75t吊钩 75t Capacity Hook Block	× 1
	长L	1690mm
	宽W	690mm
	高H	770mm
	重量Weight	660kg
	30t吊钩 30t Capacity Hook Block	× 1
	长L	1500mm
	宽W	730mm
	高H	300mm
	重量Weight	300kg
	8t吊钩 8t Capacity Hook Block	× 1
	长L	750mm
	宽W	400mm
	高H	400mm
	重量Weight	235kg
	上车1号配重 Counterweight 1 on Crane Superstructure	× 2
	长L	3320mm
	宽W	294mm
	高H	1200mm
	重量Weight	7000kg
	上车2号配重 Counterweight 2 on Crane Superstructure	× 1
	长L	3320mm
	宽W	358mm
	高H	1200mm
	重量Weight	6500kg
	主臂顶节臂 Boom Top	× 1
	长L	6950mm
	宽W	1486mm
	高H	1575mm
	重量Weight	1090kg
	主臂3米节 3m Boom Insert	× 1
	长L	3110mm
	宽W	1486mm
	高H	1575mm
	重量Weight	330kg

	主臂6米节 6m Boom Insert × 1 长 L 6110mm 宽 W 1486mm 高 H 1575mm 重量 Weight 600kg
	主臂9米节 9m Boom Insert × 4 长 L 9110mm 宽 W 1486mm 高 H 1575mm 重量 Weight 800kg
	主臂臂端单滑轮 Boom Head Single Sheave × 1 长 L 1200mm 宽 W 900mm 高 H 800mm 重量 Weight 200kg
	固定副臂底节臂 Fixed Jib Butt × 1 长 L 4500mm 宽 W 900mm 高 H 800mm 重量 Weight 770kg
	固定副臂中间节 Fixed Jib Insert × 2 长 L 4500mm 宽 W 900mm 高 H 800mm 重量 Weight 210kg
	固定副臂顶节臂 Fixed Jib Insert × 1 长 L 4500mm 宽 W 900mm 高 H 800mm 重量 Weight 325kg

说明 Notes

- 以上零部件运输形状为示意图，所标尺寸为设计值，不包括包装。
The above parts dimension is only for illustration, the dimension shown is design value, and does not include the package.
- 重量为设计值，由于制造误差，可能稍有不同。
The weight is design value, may have slight difference due to error in manufacture.

上车

发动机

采用上柴D6114ZLG1B电控发动机，额定功率200kW，额定转速为1800rpm，最大输出扭矩1100 N·m。排放符合欧洲工程机械第二阶段排放标准。

控制

智能化计算机集成式可编程控制系统，是该产品的关键核心技术，采用PLC可编程控制器，并与常规电气相结合，完成系统的逻辑控制与电比例控制功能，实现起重机的自动控制，大大提高起重机的作业安全性、可靠性和作业效率。本机的操作可以通过电脑的屏幕显示出来，很方便的实现了人机对话。

液压系统

采用液比例控制，开式液压系统，恒功率变量泵系统。
液压系统组成：起升系统，变幅系统，回转系统，行走系统，辅助安装系统。

特点：起升系统、变幅系统、行走系统采用开式系统，主泵为恒功率变量泵，具有功率限制，压力切断功能，可以满足多个执行元件动作要求。回转系统采用开式系统，响应快，控制精准，起制动、换向平稳，无冲击。可以满足频繁换向，微动操作。

起升机构

主、副起升型号相同，单独驱动，双泵合流供油；片式常闭制动器。主、副起升机构与转台采用销轴连接，便于组装。驱动马达、起升钢丝绳均为国产，平衡阀为德国进口，最大速度可达120m/min.，具有优良的微速性能。起升机构还具有换油方便、低噪音、高效率、长寿命等特性。

变幅机构

主臂变幅机构采用内藏式减速机，片式常闭制动器。卷筒设有棘轮锁止装置，以实现机械制动，安全可靠。主臂变幅机构与转台采用销轴连接，便于组装。驱动马达、起升钢丝绳为国产，平衡阀为德国进口。

回转机构

回转机构布置在转台内侧前面，由一个行星减速机组成，与回转支承内啮合。液压缓冲，具有自由滑转功能。行星齿轮减速机，可控常闭、片式制动器，工作可靠，维修方便。

回转支承

采用徐州罗特艾德公司的三排滚柱式回转支承，质量稳定可靠。

上车配重

上车1号配重：7.0t：共2块；
上车2号配重：6.5t：共1块；

Crane Superstructure

Engine

Shanghai Diesel D6114ZLG1B engine with electronic control, rated output power 200kW, rated speed 1800 rpm., max. out torque 1100N.m, emission in compliance with European Construction Machinery Stage II.

Control System

Intelligent computer integrated program control system is the key technology of the crane. PLC program controller is used, with combination of conventional electrics, to realize the function of logic control and electronic proportional control of the system, greatly improving safety, reliability and efficiency for crane operation. Crane operation can be shown by a larger computer display, and easy for man-machine interaction.

Hydraulic System

Hydraulic proportional control, open type circuit hydraulic system, constant power and variable displacement pump system. Hydraulic system: winch, luffing gear, slewing gear, tower jib backstop, travel gear, auxiliary assembly system.

Features: winch, luffing gear, travel gear are of open type system, main pump is constant power and variable displacement pump, with function of power limit and pressure cut-off, may satisfy the requirement of multiple actuator movement. Slewing gear is open type system, quick response, accurate control, stable starting, braking and direction change, no impact, may satisfy operation of frequent direction change and fine motion.

Winch

Main/auxiliary winch has same model, with independent drive and combination of two pumps for oil supply; disc type constant closed brake; main/auxiliary winch and turntable connected by pin shaft, easy for assembly. Drive motor, winch wire rope made in China, and counterbalance valve imported from Germany, max. line speed 120m/min., with good fine speed performance. Winch also features easy oil replacement, low noise, high efficiency and long service life.

Luffing Gear

Boom luffing gear has built-in speed reducer, and disc type constant closed brake; winch drum has a ratchet locking device to realize mechanical braking, safe and reliable. Boom luffing gear and turntable connected by pin shaft, easy for assembly. Drive motor, winch wire rope made in China, and counterbalance valve imported from Germany.

Slewing Gear

Slewing gear is arranged inside the front of turntable, made up by a planetary reducer, and internal meshed with slewing ring, hydraulic buffering, and with the function of free swing. Planetary reducer has a controllable constant-closed disc brake, working reliable and easy for maintenance.

Slewing Ring

Slewing ring is a 3-row roller type slewing bearing made by Xuzhou Rothe Erde, with reliable quality.

Superstructure Counterweight

Superstructure Counterweight 1: 7.0t, 2 slabs
Superstructure Counterweight 2: 6.5t, 1 slab

详细介绍

Brief Introduction

操纵室

操纵室采用钢制框架结构，正面配置有整体式夹层玻璃，其余玻璃均为钢化玻璃。装有可调式座椅、按人机工程学布置的全套操纵仪表和控制装置，配置冷暖空调、音响等操作舒适，并配置有灭火装置、破碎锤等安全工具。

转台

转台采用箱型与单腹板混合的结构，该结构整体稳定性好。转台是联系上下车的关键承载结构件。转台通过回转支承与下车进行连接。驾驶室、起升机构、变幅机构、发动机、人字架、臂架及配重等分别与转台在不同部位进行连接。

下车

下车包括车架、履带架、行走机构。车架和履带架采用插入式连接。履带架靠油缸驱动，实现伸缩。转运时，履带架不用拆下，和转台、车架一起运输。

车架

车架采用高强度钢板、H型结构，中间设置横隔板，加强其抗扭刚度，结构简单，承载能力强，刚性好。

履带架

包括履带梁和四轮一带。履带梁采用箱形结构，和车架连接部位局部加强，中间设置横隔板。两个履带架对称布置，装有宽度为0.76m的履带板。

行走机构

履带行走驱动采用内藏式行星齿轮减速机，液压释放行走制动器，每个减速机由国产轴向柱塞变量马达驱动，可同步操作，也可单独操纵，以实现直行和转弯。

行走速度

变量马达可以实现无级变速，最高速度1.2公里/小时。行走时，设备运行平稳，可实现快速行走。

作业装置

起重臂包括主臂、固定副臂。结构型式为中间等截面，两端变截面的四弦杆空间桁架结构，主臂主弦杆、腹杆采用国产优质管材，提高了臂架抗弯曲的能力。

主臂

主臂为中间等截面、两端变截面的空间桁架式结构，钢管焊接，臂架顶部与根部用钢板加强，以利于传递载荷。主臂配置臂端单滑轮机构，主臂长度为13~58m。
组成：底节臂6.5m、中间节臂3m×1、中间节臂6m×1、中间节臂9m×4、顶节臂6.5m。

Operator's Cabin

Operator's cabin is steel frame structure, front windshield has overall type safety glass, other glass is hardened glass, equipped with adjustable seat, all kinds of ergonomic designed instruments and controls, air-conditioner and CD player, and also with safety tools such as fire extinguisher and breaker.

Turntable

Turntable is structure of box type and single web plate, with good overall stability. Turntable is key structural part linked with crane superstructure and crane carrier for load bearing, with many mechanisms arranged on it, such as operator's cabin, winch, luffing gear, engine, gantry, boom and counterweight.

Crane Carrier

Crane carrier comprises car-body, crawler track, and travel gear. Car-body and crawler track is inserted for connection, crawler track extension and retraction is driven by hydraulic cylinder. When transporting, crawler track needs not be removed, and can be transported together with turntable and car-body.

Car-body

Car-body is made of high strength steel, H-shaped structure, with cross panel installed in the middle to strengthen its stiffness of torsion resistance, simple structure, high loading capacity and well rigidity.

Crawler Track

Crawler track consists of track beam, drive sprocket, idler wheel, upper roller, lower roller and track. Crawler beam is box-shape structure, the connection place to frame is strengthened partially, and cross panel is installed in the middle of it. Two crawler tracks are symmetrically arranged, with 0.76m track pads.

Travel Gear

Travel gear drive has built-in planetary gear reducer and hydraulic release service brake, each reducer is driven by domestic manufactured axial piston variable displacement motor, can be operated synchronously or independently to realize straight travel and turning around.

Travel Speed

Variable displacement motor can realize infinitely variable drive, max. speed 1.2 km/h, stable and fast travel.

Lifting Operation Parts

Lifting boom comprises main boom and fixed jib, the structural type is lattice structure of four tubular chords with intermediate equal section and two end variable section, main boom chord and web rod are made of domestic high quality tube, with the ability for improving torsion resistance.

Boom

Main boom is lattice structure of intermediate equal section and two end variable section, welded by steel tube, boom top and boom foot reinforced by steel plate for load transfer, equipped with boom head single sheave, boom length: 13m~58m.
Construction: boom butt 6.5m, boom insert 3m×1, boom insert 6m×1, boom insert 9m×4, boom top 6.5m.

详细介绍

Brief Introduction

固定副臂

固定副臂为中间等截面、两端变截面的空间桁架式结构，钢管焊接，臂架顶部与根部用钢板加强，以利于传递载荷。
固定副臂可在主臂长13~43米范围内进行作业，其作业长度为9~18m，含10°及30°两种安装角。
固定副臂通过支架及固定副臂前、后拉索与主臂连为一体，随着主臂变幅机构的起与落来达到固定副臂的工作幅度。固定副臂支架结构为A形双肢箱形结构，抗轴压稳定性好，该支架长度为4.25m。
组成：底节臂4.5m、中间节臂4.5m×2、顶节臂4.5m。

人字架

人字架是重要结构件之一，前足采用箱形双肢结构，后足采用可折叠式拉板。

吊钩

标准配置：75t吊钩、30t吊钩、8t吊钩

安全装置

安全装置包括力矩限制器、转台回转锁销装置、起重臂防后翻装置、起升高度限位装置、风速仪、水平仪、液压系统的溢流阀、平衡阀、双向液压锁、回转警告等。

力矩限制器

检测功能：力矩限制器能自动检测出起重臂的角度、起重载荷，显示功能：实时的显示当前实际载荷，工作半径，起重臂角度。
警告功能：如果检测到实际载荷超过额定载荷，起重臂超过极限角度，力矩限制器发出报警并限制当前动作。

主、副提升过卷装置

当主、副卷扬上升到一定高度时候，仪表上的过卷保护指示灯亮，同时力矩限制器停止起升动作。

主、副提升过放装置

此保护功能由安装在卷筒内部接近开关检测到卷筒上的钢丝绳剩下三卷时候，仪表上的指示灯亮，同时力矩限制器自动停止起升落动作。

棘爪锁止装置

该功能用于锁定变幅卷扬，起重臂降落的时候必须打开该装置，否则不能降落，用于保护臂架在非工作时安全停放。

Fixed Jib

Fixed jib is lattice structure of intermediate equal section and two end variable section, welded by steel tube, jib top and jib foot reinforced by steel plate for load transfer.
Fixed jib can be operated within the range of boom length 13~43m, and lifting operation length is 9~18m, with two offset angle of 10° and 30°.
Fixed jib is connected with boom by strut and front and rear guy cable, and reach its working radius with raising and lowering of boom luffing gear. Fixed jib strut is A-shaped two chords box type structure with good stability, strut length is 4.25m.
Construction: jib butt 4.5m, jib insert 4.5m×2, jib top 4.5m.

Gantry

Gantry is one of the important structural parts, the front foot is box-type structure of twin tubular chord, and the rear foot is folded pendant.

Hook Block

Standard equipment: 75t capacity hook block, 30t capacity hook block, 8t capacity hook block

Safety Devices

Safety devices comprise: load moment limiter, turntable lock pin, boom backstop, hoist limit switch, anemometer, level gauge, hydraulic overflow valve, counterbalance valve, two-way hydraulic lock, slewing warning lamp, etc.

Load Moment Limiter

Detection function: automatically detect boom angle and lifting load.
Display function: real time display current actual load, working radius and boom angle.
Warning function: automatically send out warning and stop crane operation when detecting actual load exceed rated load, boom out of limit angle.

Main/Auxiliary Winch Over-Wound Protection Device

When main/auxiliary winch hoists up to a certain lifting height, an over-wound warning lamp on instrument panel lights on, at the same time, load moment limiter stops crane operation.

Main/Auxiliary Winch Over-Release Protection Device

When access switch in winch drum detects only three turns of wire rope left on the drum, an over-release warning lamp on instrument panel lights on, at the same time, load moment limiter stops crane operation.

Winch Ratchet Locking Device

Winch drum has a ratchet locking device, and it must be turned on when lowering boom, otherwise boom cannot be lowered. The device is used to stow the boom for safety.

详细介绍 Brief Introduction

自拆装 Self Assembly/Disassembly

主、副提升过放装置

此保护功能由安装在卷筒内部接近开关检测到卷筒上的钢丝绳剩下三卷时候，仪表盘上的指示灯亮，同时力矩限制器自动停止起升落动作。

Main/Auxiliary Winch Over-Release Protection Device

When access switch in winch drum detects only three turns of wire rope left on the drum, an over-release warning lamp on instrument panel lights on, at the same time, load moment limiter stops crane operation.

棘爪锁止装置

该功能用于锁定变幅卷扬，起重臂降落的时候必须打开该装置，否则不能降落，用于保护臂架在非工作时安全停放。

Winch Ratchet Locking Device

Winch drum has a ratchet locking device, and it must be turned on when lowering boom, otherwise boom cannot be lowered. The device is used to stow the boom for safety.

起重臂角度限制

主起重臂仰角在80°时，起重臂被停止起升，由力矩限制器和行程开关双级控制。主起重臂在仰角小于30°时停止起重臂降落，由力矩限制器控制。

Boom Angle Limit

When boom angle is more than 80°, load moment limiter and hoist limit switch stop boom raising. When boom angle is less than 30°, hoist limit switch stops boom lowering.

声光报警器

在履带起重机做回转动作的时候灯闪烁并且发出声音报警。

Audio/Video Warning

When crawler crane is slewing, the device blinks and warns.

力限器三色报警灯

由三种颜色组成，负载在90%以下时“绿灯”亮，表示起重机在安全区域运行，负载在90%-100%的时候“黄灯”亮，表示起重机在已接近额定载荷范围，负载在100%-105%以上时“红灯”和“黄灯”同时亮，表示起重机已经超载，在危险区域，控制系统自动切断起重机向危险的方向运行。

Tricolor Warning Lamp

The lamp comprises 3 colors, when crane loading is below 90% of total rated lifting load, "Green Lamp" lights on to indicate crane is running in safety area; when crane loading is in 90%~100% of total rated lifting load, "Yellow Lamp" lights on to indicate crane is close to total rated lifting load; when crane loading is above 100%~105% of total rated lifting load, "Red Lamp" and "Yellow Lamp" light on at the same time to indicate crane is overload; In dangerous area, control system can automatically cut off crane movement to dangerous direction.

照明灯

装置在转台前方、臂架上和操纵室内，用于夜间工作提供照明。

Illumination Lamp

There are illumination lamps at front of turntable, on boom and inside operator's cabin for night operation.

示高灯

安装在臂架顶部，作为高空警示。

Height Mark Lamp

Boom tip has a height mark lamp for high level operation warning.

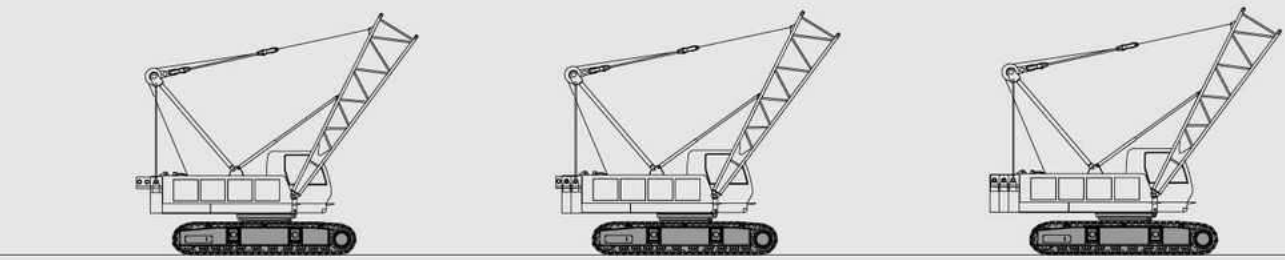
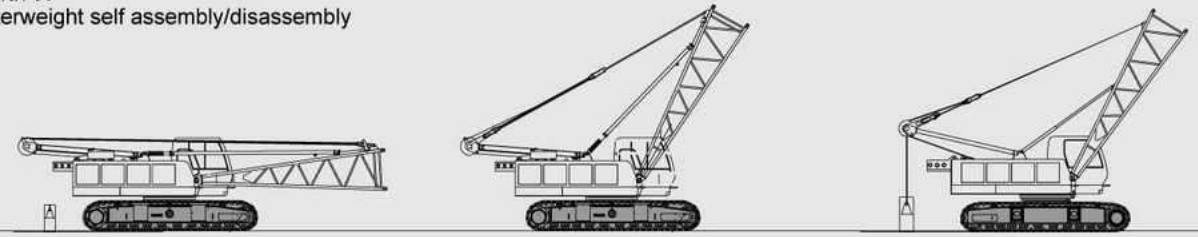
风速仪

实时检测当前风速，传送到操纵室的监视器上，提醒司机操作的安全。

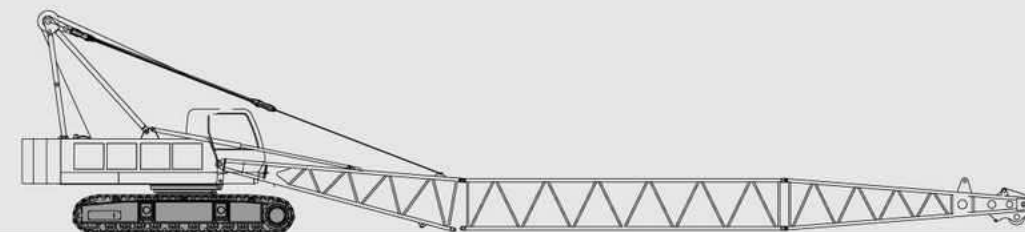
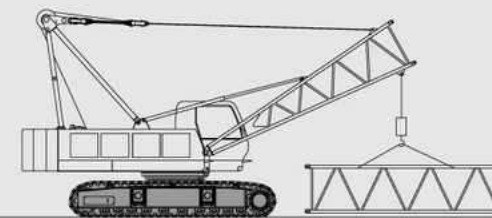
Anemometer

Anemometer at boom head can detect current wind speed and send wind signal to a monitor in operator's cabin to alert operator for safety.

配重自拆装 Counterweight self assembly/disassembly

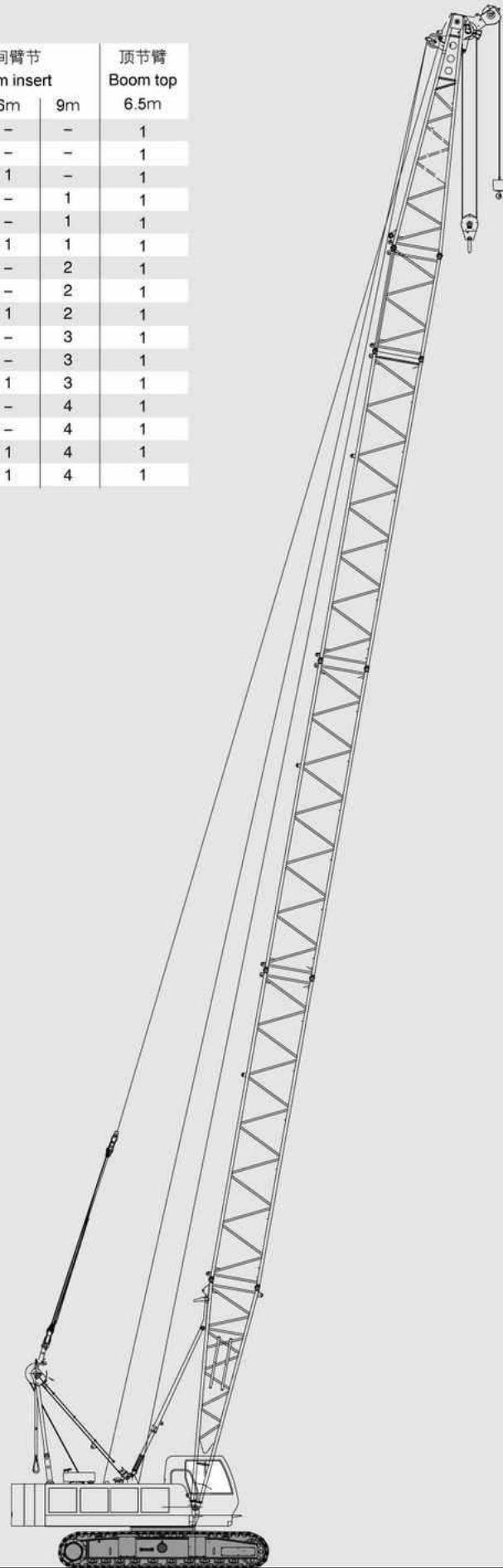


臂架自拆装 Boom self assembly/disassembly

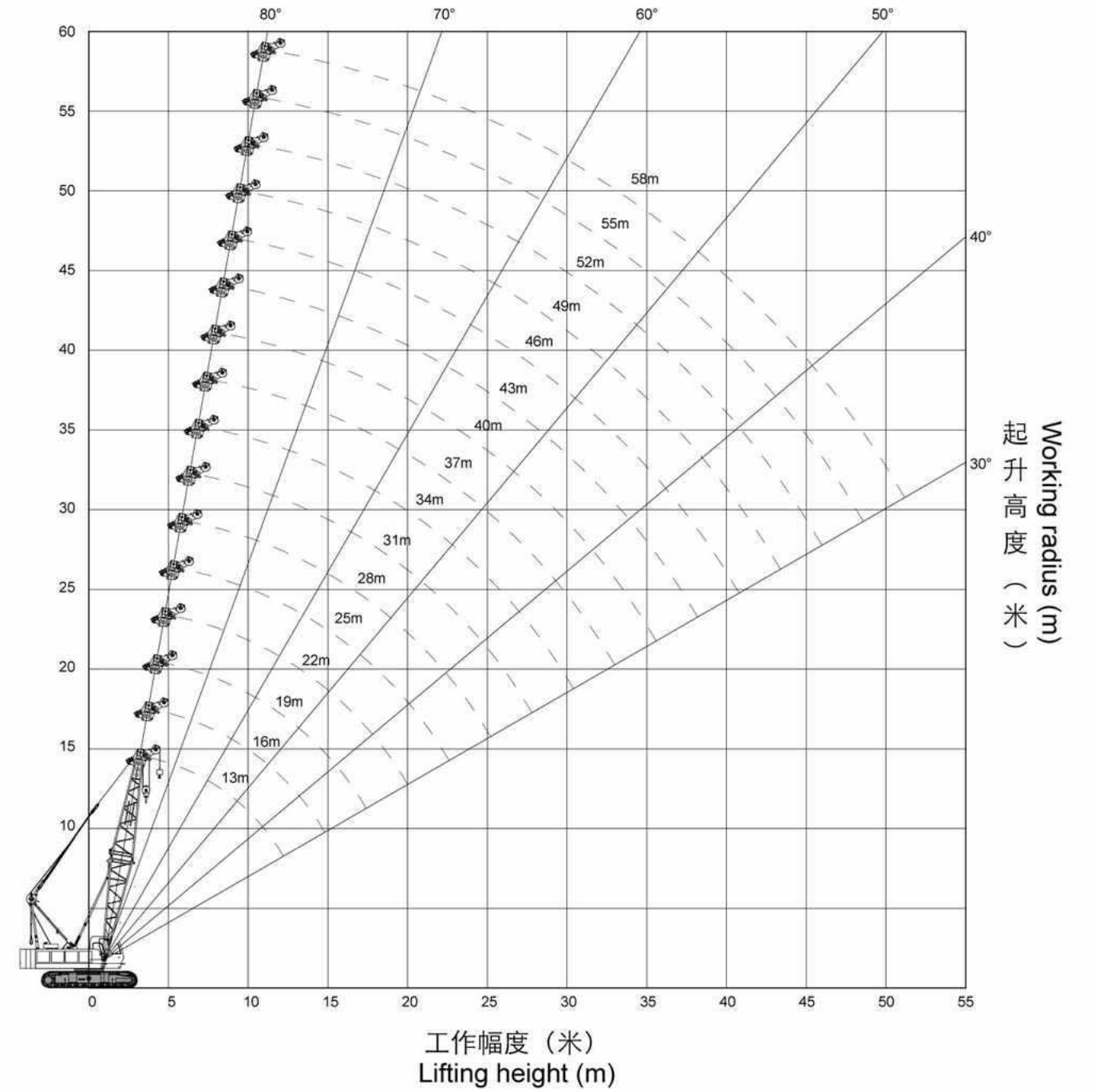


主臂臂节组合/主臂工况 Boom Combinations/Boom Working Condition

臂长 Boom length (m)	底节臂 Boom but 6.5m	中间臂节 Boom insert			顶节臂 Boom top 6.5m
		3m	6m	9m	
13	1	-	-	-	1
16	1	1	-	-	1
19	1	-	1	-	1
22	1	-	-	1	1
25	1	1	-	1	1
28	1	-	1	1	1
31	1	-	-	2	1
34	1	1	-	2	1
37	1	-	1	2	1
40	1	-	-	3	1
43	1	1	-	3	1
46	1	-	1	3	1
49	1	-	-	4	1
52	1	1	-	4	1
55	1	-	1	4	1
58	1	1	1	4	1



主臂作业范围 Boom Working Area



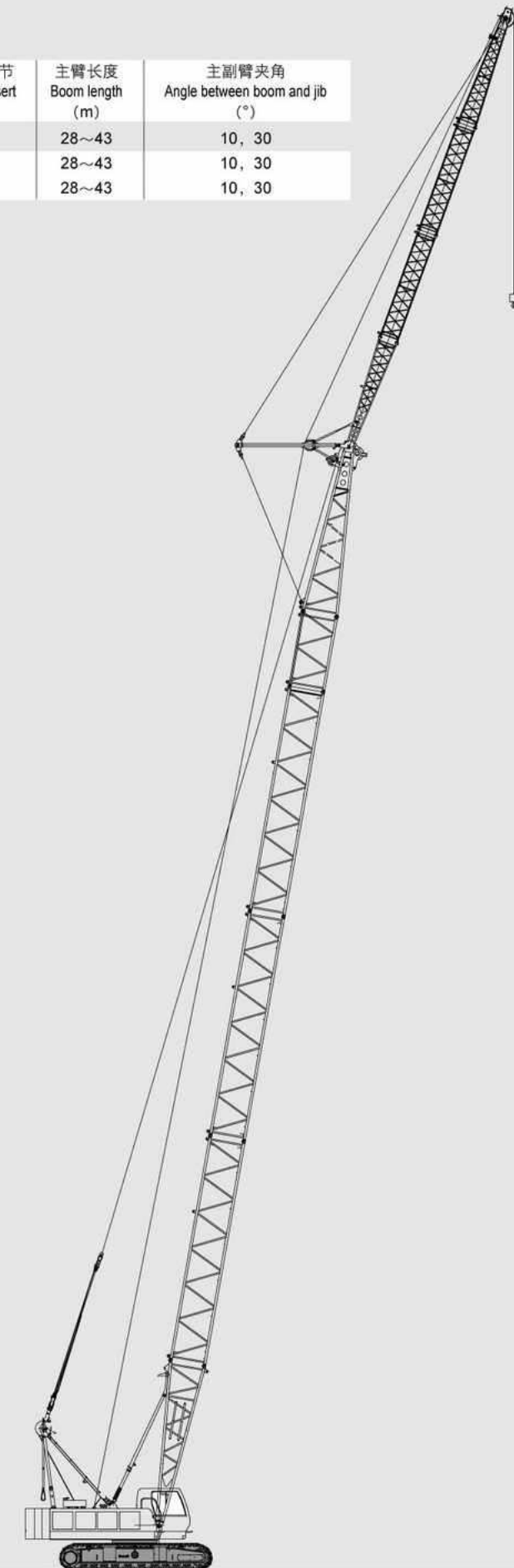
主臂工况载荷表 Boom Working Condition and Lifting Load Chart

幅度 Radius (m)	臂长Boom length (m)							
	13	16	19	22	25	28	31	34
3.5	75.00							
4	70.00	70.00/4.10	55.00/4.60					
5	53.60	52.30	51.00	48.60	40.60/5.60			
6	40.90	40.10	39.30	38.50	37.70			
7	33.30	32.60	31.90	31.20	30.60	36.20	31.50/6.60	
8	27.50	27.40	26.90	26.30	25.80	25.30	24.80	24.30
9	23.30	23.30	23.20	22.80	22.20	21.80	21.40	21.00
10	20.30	20.20	20.20	20.00	19.50	19.20	18.80	18.40
12	15.90	15.90	15.80	15.80	15.70	15.40	15.00	14.70
14		12.90	12.90	12.90	12.80	12.60	12.50	12.10
16			10.90	10.90	10.70	10.60	10.50	10.20
18				9.13	9.10	9.10	9.00	8.80
20				8.00	7.90	7.90	7.70	7.60
22					6.70	6.90	6.80	6.60
24						6.10	5.90	5.80
26						5.90	5.30	5.10
28							4.70	4.60
30								4.00

幅度 Radius (m)	臂长Boom length (m)							
	37	40	43	46	49	52	55	58
7	24.70/7.70							
8	23.90	23.40	19.90/8.80					
9	20.60	20.20	19.80	18.40/9.20	16.90/9.80			
10	18.00	17.70	17.30	17.00	16.60	15.70/10.30	13.10/10.80	10.90/11.30
12	14.30	14.00	13.70	13.50	13.20	13.30	13.10	10.70
14	11.80	11.60	11.30	11.00	10.80	10.90	10.70	10.00
16	10.00	9.80	9.50	9.20	9.00	9.10	9.00	8.80
18	8.70	8.40	8.10	7.90	7.70	7.70	7.59	7.50
20	7.50	7.30	7.00	6.90	7.10	6.60	6.60	6.40
22	6.50	6.50	6.20	5.90	6.60	5.80	5.80	5.50
24	5.70	5.70	5.40	5.30	5.70	5.00	5.00	4.90
26	5.00	5.00	4.90	4.70	4.90	4.40	4.40	4.29
28	4.40	4.40	4.20	4.20	4.30	3.90	3.85	3.63
30	4.00	3.90	3.80	3.60	3.50	3.30	3.30	3.19
32	3.60	3.50	3.30	3.20	3.30	2.90	2.86	2.75
34		3.10	2.90	2.80	2.90	2.50	2.53	2.31
36			2.70	2.50	2.50	2.30	2.09	1.98
38			2.40	2.30	2.10	2.00	1.70	1.65
40				2.00	1.80	1.70	1.40	1.43
42					1.70	1.43	1.32	1.21
44						1.30	1.21	1.10
46						1.00	1.20	1.00

固定副臂臂节组合/副臂工况 Fixed Jib Combinations/Jib Working Condition

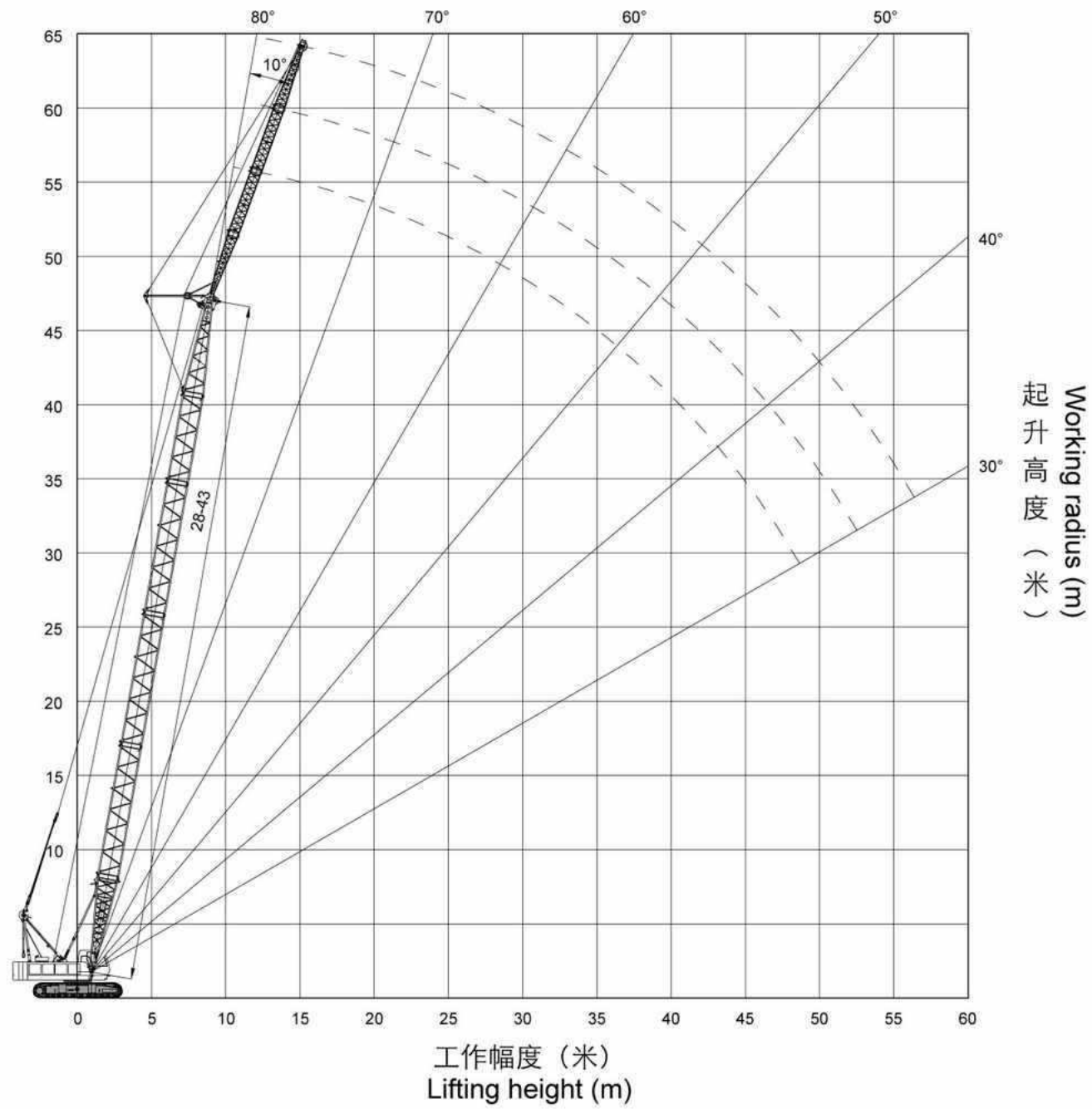
副臂长度 Jib length (m)	中间节 Jib insert	主臂长度 Boom length (m)	主副臂夹角 Angle between boom and jib (°)
9	-	28~43	10, 30
13.5	1	28~43	10, 30
18	2	28~43	10, 30



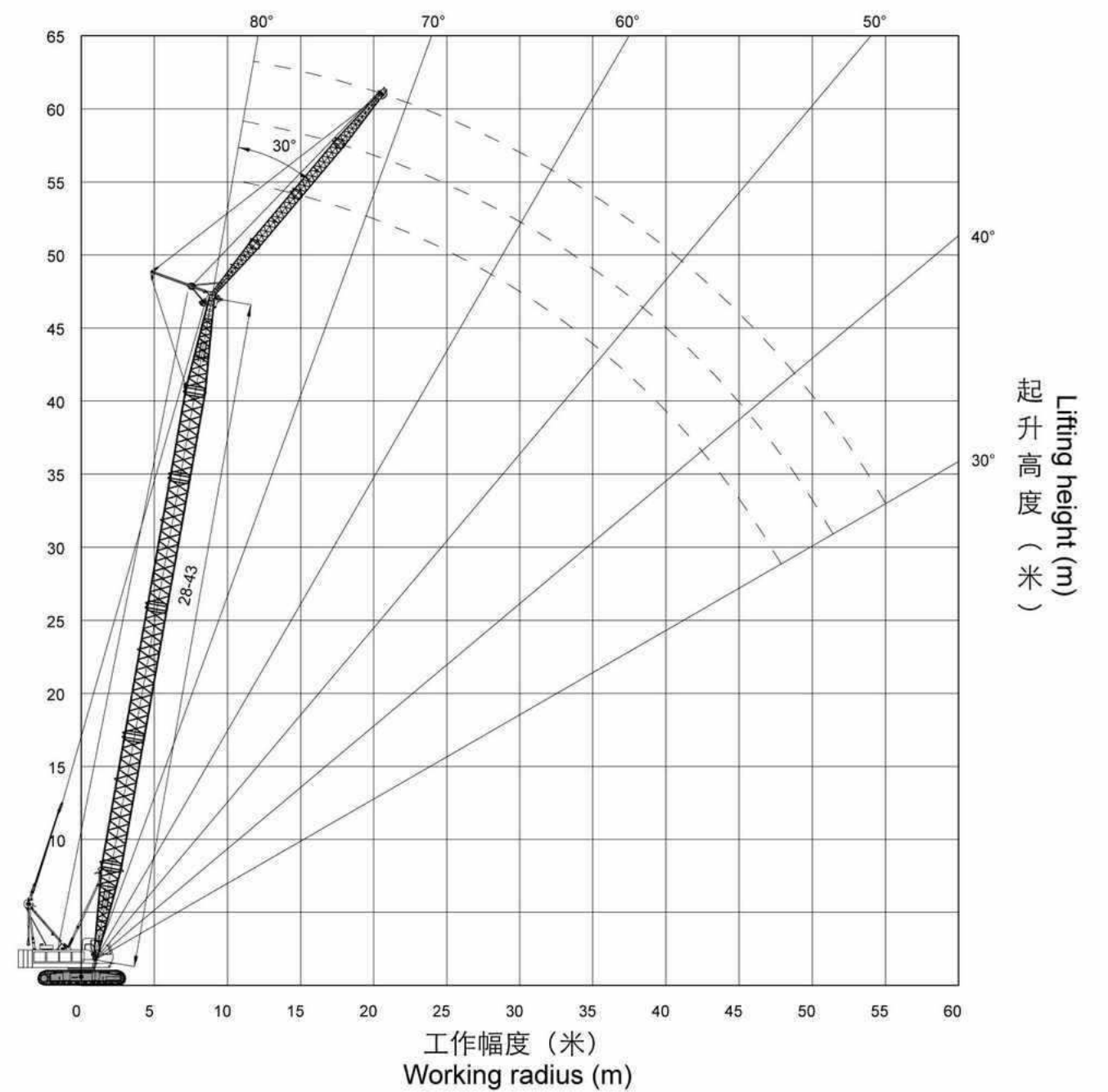
固定副臂作业范围
Fixed Jib Working Area

固定副臂作业范围
Fixed Jib Working Area

副臂10°时Jib at 10°



副臂30°时Jib at 30°



固定副臂工况载荷表 Fixed Jib Working Condition and Lifting Load Chart

主臂长度 Boom length (m)	主臂28米 Boom length 28m			主臂31米 Boom length 31m			主臂34米 Boom length 34m		
	9	13.5	18	9	13.5	18	9	13.5	18
副臂长度 Jib length (m)	副臂安装角Jib angle (°)								
幅度 Radius (m)	10	10	10	10	10	10	10	10	10
9	6.50			6.50					
10	6.50	6.50		6.50	6.50		6.50		
12	6.50	6.50	6.50	6.50	6.50	6.50	6.50	6.50	6.50
14	6.50	6.50	6.50	6.50	6.50	5.30	6.50	6.50	5.40
16	6.50	6.50	6.50	6.50	6.50	5.30	6.50	6.50	5.30
18	6.50	6.50	6.50	6.50	6.50	5.10	6.50	6.50	5.30
20	6.50	6.50	6.50	6.50	6.50	5.00	6.50	6.50	5.00
22	6.50	6.50	6.50	6.50	6.50	4.90	6.40	6.40	4.90
24	5.90	5.90	6.00	5.80	5.90	4.90	5.70	5.60	4.90
26	5.20	5.30	5.30	5.10	5.20	4.80	5.00	5.00	4.90
28	4.70	4.70	4.80	4.50	4.60	4.60	4.40	4.50	4.50
30	4.20	4.20	4.30	4.10	4.10	4.20	3.90	4.00	4.00
32	3.70	3.80	3.80	3.60	3.70	3.70	3.50	3.50	3.60
34	3.40/33.00	3.40	3.50	3.30	3.30	3.40	3.10	3.20	3.30
36		3.10	3.10	2.90	3.00	3.10	2.80	2.90	2.90
38		2.80/37.00	2.80		2.70	2.80	2.50	2.50	2.60
40			2.60		2.40	2.50		2.30	2.40
42			2.30/41.00			2.30		2.00	2.20
44						2.00/43.00			1.90
46									1.70

主臂长度 Boom length (m)	主臂28米 Boom length 28m			主臂31米 Boom length 31m			主臂34米 Boom length 34m		
	9	13.5	18	9	13.5	18	9	13.5	18
副臂长度 Jib length (m)	副臂安装角Jib angle (°)								
幅度 Radius (m)	30	30	30	30	30	30	30	30	30
12	6.50			6.50			6.50/13.00		
14	6.50	6.50		6.50	6.50		6.50	6.50/15.00	
16	6.50	6.50	6.50	6.50	6.50		6.50	6.50	
18	6.50	6.50	6.50	6.50	6.50	5.00	6.50	6.50	6.50
20	6.50	6.50	6.50	6.50	6.50	4.70	6.50	6.50	4.70
22	6.50	6.50	6.50	6.50	6.50	4.70	6.50	6.50	4.70
24	6.00	6.20	6.30	5.90	6.10	4.70	5.80	5.90	4.70
26	5.30	5.50	5.60	5.20	5.40	4.60	5.10	5.20	4.60
28	4.70	4.90	5.00	4.60	4.80	4.60	4.50	4.70	4.60
30	4.20	4.30	4.50	4.10	4.30	4.40	4.00	4.10	4.30
32	3.70	3.90	4.00	3.60	3.80	3.90	3.50	3.70	3.80
34	3.30/33.00	3.50	3.60	3.20	3.40	3.50	3.10	3.30	3.40
36		3.10	3.20	2.90	3.00	3.10	2.80	2.90	3.00
38		2.80/37.00	2.90		2.70	2.80	2.40	2.60	2.70
40			2.60		2.40	2.50		2.30	2.40
42			2.30			2.30		2.00	2.20
44						2.00			1.90
46									1.70
48									1.40

固定副臂工况载荷表 Fixed Jib Working Condition and Lifting Load Chart

主臂长度 Boom length (m)	主臂37米 Boom length 37m			主臂40米 Boom length 40m			主臂43米 Boom length 43m		
	9	13.5	18	9	13.5	18	9	13.5	18
副臂长度 Jib length (m)	副臂安装角Jib angle (°)								
幅度 Radius (m)	10	10	10	10	10	10	10	10	10
10	6.50/10.50								
12	6.50	6.50		6.50	6.50		6.50	6.50	
14	6.50	6.50	6.50	6.50	6.50	6.50	6.50	6.50	6.50
16	6.50	6.50	6.50	6.50	6.50	6.50	6.50	6.50	5.40
18	6.50	6.50	6.50	6.50	6.50	6.50	6.50	6.50	5.20
20	6.50	6.50	6.50	6.50	6.50	6.50	6.50	6.50	5.10
22	6.20	6.30	6.10	6.00	6.20	5.90	5.90	6.10	5.10
24	5.50	5.50	5.40	5.30	5.40	5.20	5.10	5.30	5.00
26	4.90	4.90	4.80	4.70	4.70	4.60	4.50	4.60	4.60
28	4.30	4.30	4.30	4.20	4.20	4.20	4.00	4.10	4.20
30	3.80	3.90	3.90	3.70	3.70	3.80	3.50	3.60	3.70
32	3.40	3.40	3.50	3.30	3.30	3.40	3.10	3.20	3.30
34	3.00	3.10	3.10	2.90	2.90	3.00	2.80	2.80	2.90
36	2.70	2.70	2.80	2.60	2.60	2.70	2.40	2.50	2.60
38	2.40	2.40	2.50	2.30	2.30	2.40	2.20	2.20	2.30
40	2.10	2.20	2.30	2.00	2.10	2.10	1.90	1.90	2.00
42		2.00	2.00	1.80	1.80	1.90	1.60	1.70	1.80
44		1.70	1.80		1.60	1.70	1.40	1.50	1.60
46		1.50/45.50	1.60		1.40	1.50	1.20	1.30	1.40
48			1.40			1.30		1.10	1.20
50			1.20			1.20		0.90	1.10
52									1.90

固定副臂工况载荷表 Fixed Jib Working Condition and Lifting Load Chart

主臂长度 Boom length (m)	主臂37米 Boom length37m			主臂40米 Boom length40m			主臂43米 Boom length43m			
	副臂长度 Jib length (m)	9	13.5	18	9	13.5	18	9	13.5	18
幅度 Radius (m)	副臂安装角Jib angle (°)									
	30	30	30	30	30	30	30	30	30	30
12	6.50/13.00									
14	6.50			6.50				6.50		
16	6.50	6.50		6.50	6.50			6.50	6.50	
18	6.50	6.50	6.50	6.50	6.50	5.20/18.50	6.50	6.50		
20	6.50	6.50	4.80	6.50	6.50	5.00	6.50	6.50	4.90	
22	6.40	6.50	4.70	6.20	6.40	5.00	6.10	6.30	4.70	
24	5.60	5.70	4.70	5.50	5.60	5.00	5.30	5.50	4.70	
26	5.00	5.10	4.70	4.80	4.90	5.00	4.60	4.80	4.60	
28	4.40	4.50	4.60	4.30	4.40	4.50	4.10	4.20	4.30	
30	3.90	4.10	4.10	3.80	3.90	4.00	3.60	3.70	3.90	
32	3.40	3.60	3.70	3.40	3.50	3.60	3.20	3.30	3.40	
34	3.00	3.20	3.30	3.00	3.10	3.20	2.80	2.90	3.10	
36	2.70	2.80	3.00	2.60	2.80	2.90	2.50	2.60	2.70	
38	2.40	2.50	2.60	2.30	2.40	2.60	2.20	2.30	2.40	
40	2.10	2.20	2.30	2.00	2.10	2.30	1.90	2.00	2.10	
42	1.80/41.00	2.00	2.10	1.70	1.90	2.00	1.60	1.80	1.90	
44		1.70	1.80		1.60	1.80	1.40	1.50	1.70	
46		1.50	1.60		1.40	1.50	1.20	1.30	1.40	
48			1.40		1.20	1.30		1.10	1.20	
50			1.20			1.20		0.90	1.10	
52			1.00			1.00			0.90	
54									0.80	

载荷表说明：

- 表中额定起重量，指在给定的臂架长度、工作幅度条件下，重物自由悬挂，在坚实、平坦地面作业所能保证的最大起重量。作业者须视各种不良条件（如地面松软或不平、风力、侧面负荷、摆动作用、多台起重机合力起吊）限制或降低起重机的起重量；
- 表中额定起重量包括吊钩、钢丝绳、和其它所有吊具的重量；
- 表中没有列出额定值的空白区，不允许将起重机用于该区所对应的起重作业；
- 表中起重量为带上车全配重和下车全配重的起重重量；
- 使用主臂可以配置臂端单滑轮机构，臂端单滑轮机构的起重量为性能表中相应的额定起重量减去臂端单滑轮机构、8t吊钩和吊具的重量；
- 臂端单滑轮机构的最大起重量（包括吊钩、吊具和起升钢丝绳）不准超过6.5t，性能表中的额定起重量小于6.5t时按性能表起吊。

Notes on Lifting Load Chart:

- The total rated lifting loads shown in above tables are the max. lifting capacity based on the condition that crane set up on firm and level ground with given boom length, radius and load, crane operator shall limit or reduce lifting loads according to variable working conditions (soft or uneven ground, wind, side loading, slewing action, lifting with one more cranes).
- The total rated lifting loads include the weight of hook block, wire rope and other slings.
- The blank area in above tables means crane operation is not allowed corresponding to these areas.
- The total rated lifting loads are the lifting capacity for the crane with superstructure counterweight and carrier counterweight.
- Boom can be equipped with a boom tip single sheave, which lifting load is the total rated lifting loads in above table decrease the weight of single sheave, 12t capacity hook block and slings.
- The max. rated lifting load for single top is 12t (include the weight of hook block, slings and hoist wire rope), if rated lifting load in above tables is less than 12t, load lifting is according to the table.