



Truck Crane Type: XCT100

Basic technical specification

Lifting capacity	
Max. lifting load	100t
Dimension	
Overall length	15295mm
Overall width	3000mm
Overall height	3820mm
In travel configuration	
Total weight	55000Kg
1st axle	10000Kg
2nd axle	10000Kg
3rd axle	13000Kg
4th axle	13000Kg
5th axle	9000Kg
Performance	
Max. travel speed	80Km/h
Max. gradeability	45%
boom	6section, 13.1m~61m
Boom+ Jib Length	79.1m
Max. lifting height of boom	61.2m
Max. lifting height of boom + Jib	78m

Xuzhou Heavy Machinery CO., LTD

Features and advantages of XCT100 Truck Crane

XCT100 is a new generation crane of 100-ton crane designed by XCMG, based on K series mature product technology in recent ten years. It is fully draw all terrain truck cranes and most advanced product technology, integration of a number of the latest scientific and technological achievements of XCMG, improve product intrinsic quality, which build a boutique models for users.

XCT100 adopt 5-axle truck crane chassis, six U-shaped main boom, two lattice jib. Built-in double independent winch, external gear type rotary mechanism, combined counterweight, open hydraulic system. Main pump adopt variable pump and supplemented by dosing pumps., Lifting using variable motor, slewing adopt displacement motor to meet different needs. Load sensitive system can improve work efficiency. Computer integrated control technology to support multi-condition detection function, which makes the job safer. The new XCT Series appearance, hangar hierarchical surfaces, operator's cab configuration monolithic large curved console, highlight the atmospheric qualities. XCT100 has a wide range of operations, powerful lifting performance and is easier to use, safe and reliable.

(1) New generation of 100 tons of products, which has excellent lifting performance and driving performance.

The machine uses the latest technology to optimize matches, five axles truck chassis, six high-intensity U-shaped boom. It can travel with jib. Full-length boom is leading at home and abroad in tonnage products, lifting performance promote by 30%, the operating efficiency promote by 15%, which has a better pass ability.

(2) Leading technology boom

Boom adopt imported high-strength steel, six U-shaped cross-section main boom, optimized sectional aspect ratio, reducing the reverse hoists, the lateral bending phenomena; plug-in slider to increase the effective length of the boom, eliminate the slider contact with the boom by point contact or line phenomenon, can effectively prevent local buckling phenomenon; compact telescopic boom tail structure improved the ratio boom, effectively increasing the length of the whole fully boom.

(3) Self-developed full load sensitive valve-controlled technology, contribute to low failure rate, manipulate smooth and inching movement.

Using of large displacement high-voltage electronic unauthorized power control variable pump, providing a strong power for the vehicle while maintaining system pressure, flow stability, avoiding jitter caused by the impact. Adopt with imported multi-way valve,

We reserve the right to modify the design without notice for improvement

using load-sensitive filtering technology to improve the operating speed of the superstructure action to improve the user operating efficiency of 15%. Multiple valve using V-groove, matching electric proportional joystick controls optimized strategies to achieve smooth lifting manipulation and inching moving.

(4) XCT100 adopt single cylinder telescoping system which is upgraded, using mechanical, electro-hydraulic three kinds of protection that dramatically improves the telescopic system reliability.

XCT100 adopt high precision length measuring cylinder sensor with a new guide to improve detection accuracy boom length, looking for booms-bit precision, which improve the success rate of automatic telescope. Automatic telescope uses intelligent switching control of big pump and small pump. Which ensure the high-speed telescopic. It can achieving pull the pin in a low speed when approaching boom position. Using mechanical, electrical, hydraulic triple protection, which can eliminating cylinder hyperextension, off road and other failures. Telescopic cylinders dovetail groove structure optimized to avoid human errors.

(5) Lifting System is reliable and safety.

XCT100 adopt high-precision pressure shut-off valve to prevent pressure surges occur during the operation. Which can eliminate shock in the high-temperature. It improves the reliability of lifting operations. Large displacement starting motor with special winch up the oil circuit and precise brake control, millisecond response time, with stall protection, eliminate secondary lifting decline.

(6) Using of engine limit power matching technology can protect the engine from overload, save fuel.

Engine limit power matching technology automatically adjusted according to the actual size of the engine speed torque, smooth torque variation, reduce engine shocks, which ensure the crane is no flame, avoid the role overload, extended engine life. Displacement pump according to the engine speed adaptive regulation, no-load and light load effectively reduce energy use, to save fuel.

(7) New power platform, the perfect fusion of high performance and low fuel consumption

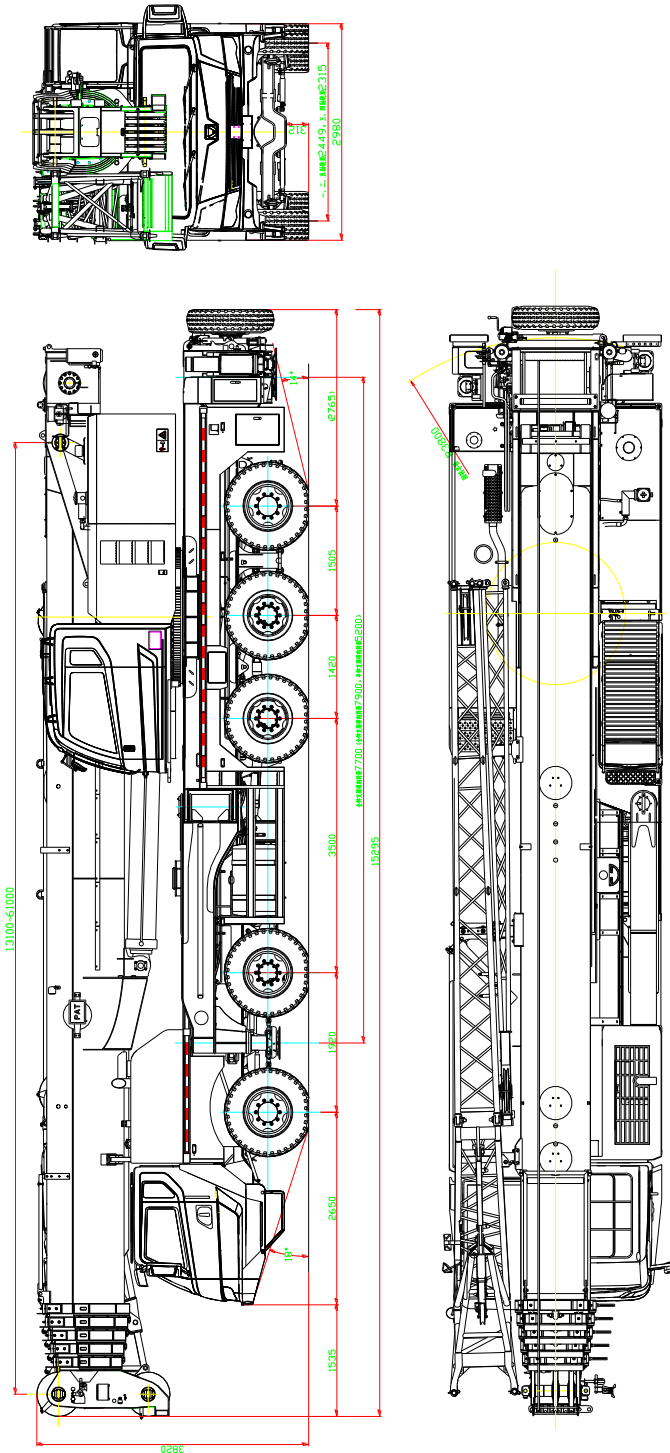
Low speed high torque engines and large ratio, overdrive gearbox as the core of a new power platform, has a strong driving performance, high load capacity, good stability, which can achieve a high dynamic performance and low fuel consumption perfect fusion.

(8) Rear axle steering servo hydraulic control technology, turning mode driving and

small radius steering modes, to ensure stable and reliable vehicle at high speed, flexibility at low speed.

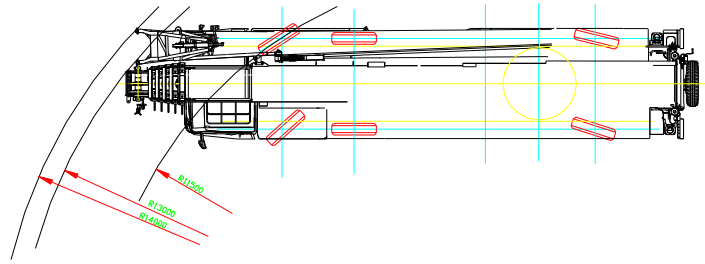
(9) Front disk and back drum braking system, has a good heat resistance, thermal recession, long life, easy maintenance, to ensure that vehicles in poor road conditions after repeated braking has higher braking efficiency, braking stability and reliability at high speed.

Outline in travel configuration



We reserve the right to modify the design without notice for improvement

Turning track of crane in travel configuration



Turning radius trajectories

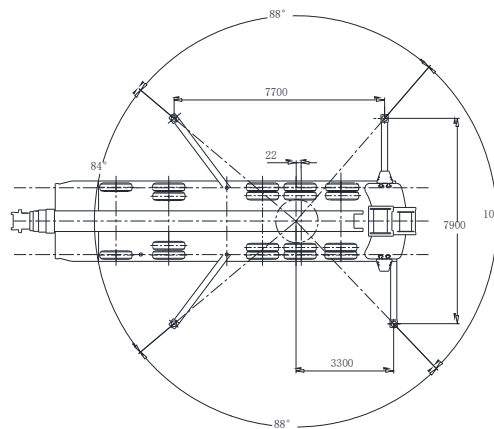


Figure legs fully extended operating range state

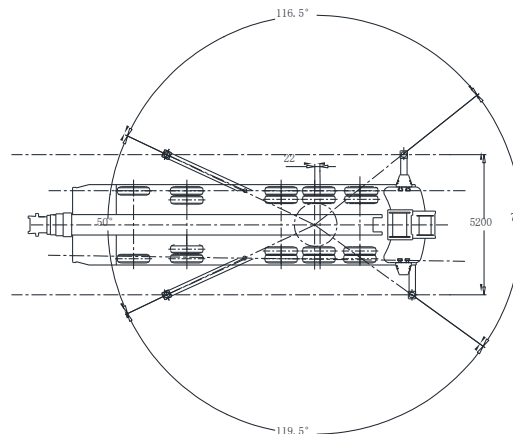


Figure legs half-extended operating range state

Note: This picture shows the schematic diagram, rather than drawing (turning radius trajectories must include: tire turning radius, boom head turning radius, maximum turning radius and corresponding trajectories for multi-axle steering if the product must contain each axle steering wheel trajectories; activities included working range diagram outrigger legs fully extended and legs stretched half the state)

We reserve the right to modify the design without notice for improvement

Technical specifications of superstructure

Type XCT100

Engine

Model	BF6M1013EC	TAD720VE
Type	In line、 6 cylinder、 Water cooled、 Booster、 Intercooled	
Manufacture	Dalian DEUTZ	Volvo
Power/kw/rpm	174/2300	
Torque/N.m/rpm	854/1400	
Displacement/ml	7150	
Fuel consumption/g/kw.h	234	230
Fuel tank capacity/L	About 250L	
Emission standard	China national II	
Remarks		

Hydraulic system

Hydraulic pump.....Engine in the superstructure driven variable displacement piston pump for hoisting, luffing, telescoping and rotating.

Control valve.....Load Sensitive Proportional electro-proportional pilot hydraulic oil control multi-valve.

Oil.....Air-cooled hydraulic oil cooler, which can reduce the oil temperature Effectively.

Oil tank capacity.....about 1100L

Boom

Telescopic boom with anti-twist design adopt high-strength structural steel, six telescopic main boom, boom section is U-shaped arc angle, so that the boom has a very high stability, the up slider support the main boom can be adjusted. Using of single cylinder telescoping bolt approach can achieve a variety of combinations of conditions. Boom

length.....13.1m~61m
Speed of telescope.....fully extended 61m to 420s

Jib

Composed by frame, rotating frame and truss two sections folding lattice jib, with 0 °, 15 °, 30 ° three installation angle can be selected, close beside the main boom.

Length of jib.....10.6m/18.1m

Single top
(must be installed)
(boom auxiliary
pulley)

Single pulley fixed on the boom top used in Condition of lifting with single wire rope.
The lifting performance installed single top is same with installed 10.6 jib at 0° angle.

Elevating system

Single cylinder luffing, gravity-down mode, save fuel.
Elevating speed.....from-2°to +81° 60s

Main hoisting system

Hydraulic control speed adjustment, equipped with rope reel slots, by a hydraulic motor through a planetary gear reducer drive, built-in brake and with a balancing valve normally closed.
Operate independently with auxiliary winch.
Lifting mechanism has a high speed at light load, low speed at heavy load.

Single line pull.....104KN
Single line speed(no load) 130m/min
Dimension × length..... φ22mm×265m

Auxiliary winch
system

Hydraulic controlled speed regulation, with groove drum equipped, driven by hydraulic quantitative motor through planetary gear reducer, and with built-in constant closed brake and balance valve

fitted.
 Main and auxiliary winch systems are operated separately.
 It has features of high speed with light load and low speed with heavy load.
 Single line pull..... 74KN
 Single line speed(no load)105m/min
 Dimension × length.....φ22mm×175m

Hook block

No.	Type of hook block	Lifting capacity (t)	Pulley group	Ratio	Weight (kg)	Qty	Remarks
1	Main hook	110t	6	12	1017	1	Double hooks
2	Medium length hook	60t	3	6	538	1	Single hook
3	Auxiliary hook	7t	—	1	251	1	Single hook

Slewing system

Three-row roller type slewing ring driven by hydraulic motor drive planetary gear reducer rotating mechanism , which make it continuous rotation in 360° possible.
 Has the power to control or free sliding function,
 Which make variable speed is possible.
 Slewing speed.....0~2r/min

Operating mode

Superstructure adopt electric pilot proportion control, the use of PLC integrated intelligent control technology, control bus CAN-BUS network, in addition to conventional control functions, it also has real-time monitoring system, automatic fault diagnosis, fuzzy query conditions and wireless remote counterweight hook function (optional).

Operator’s cab

The new steel cab, sealing and corrosion resistance, safe and comfortable, fully enclosed, air-free vision dead prospect

We reserve the right to modify the design without notice for improvement

windows, safety glass, window visor fitted, sliding doors, the operator can tilt the seat back position joystick mounted on the boomrest of the seat on both sides of the stage. With sliding pedal facilitate personnel access. Roof windows fitted with front window wiper. Standard steering control components and indicators, ergonomically rational distribution.

Safety devices

Hydraulic system: Hydraulic balance valve, Hydraulic relief valve, Hydraulic double-way valve make hydraulic system steady and safety.

The control system uses advanced microprocessor technology. It is embedded operating systems, which is small power consumption, powerful function, high sensitivity, easy to operate. Touching screen LCD display with Chinese and graphically displays the percentage of torque, rated lifting load, amplitude, boom length, angle, maximum lifting height, working code, rate, limiting angle, information codes and other lifting operation parameters. It has completed with pre-alboom, overload alboom, system overload control output can effectively prevent the occurrence of dangerous lifting operation. Unique features make working angle limit under complex operating conditions more reliable, the system also has a memory function for overloading (black box).

Security system including a display, a central controller, the length / angle sensor, over hoist switch, oil sensor.

Over discharge limit switch can make three times the rope reel maintain.

Height limit switch can make lifting height does not exceed the highest limit.

LMI

The safety protection device is installed in operator's cab, Which has the functions of pre-warning, overload warning and overload control output, complete system self-checking and fault code display, as well as overloading memory (black box) function.

The function of displaying constantly:

Moment percentage
 Actual lifting load
 Rated lifting load
 Radius
 Boom length
 Angle
 Max. lifting height
 Working condition code
 Parts of line
 Limit angle
 Information code

counterweight

Total weight 36t。
 Combined weight:0、 6.5、 15、 25、 36 5combined mode

Specific combined mode:

Working condition	Total weight(t)	Combined order
1	36	①+②+③+④×2
2	25	①+②+③
3	15	①+②
4	6.5	①
5	0	0

Specific weight, quantity as follows:

Name	Counterweight①	Counterweight②	Counterweight③	Counterweight④
weight (t)	6.5	8.5	10	5.5
Quantity	1	1	1	2

Centralized lubrication system of superstructure

Computer programming control, centralized lubrication systems.
 Centralized lubrication points are slewing bearing main and auxiliary hoisting, luffing cylinder up and down hinge points, flip cab cylinder hinge point, boom back hinge point.

We reserve the right to modify the design without notice for improvement

Color

chassis, rim: black;

cab, superstructure, main boom: yellow.

Technical specification of chassis

Type Left-hand drive steering wheel, drive/steering type is 10×6×6.
2nd、3rd、4th driving, 1st、2nd、5th steering.

Frame Designed and manufactured by ourselves, with all covered walking surface, anti-torsion box structure design, made of imported high strength steel.

Engine

Model	ISM11E4 440	WP12.430 E40
Type	In line、6 cylinder、 four-stroke、 Turbocharged 、 Water cooled、 Diesel engines	
Manufacture	Xi'an Cummins Ltd.	Weichai Power Co., Ltd.
Power/kw/rpm	318/1900	316/1900
Torque/N.m/rpm	2080/1200	2060/1000-1400
Displacement/ml	10800	11596
Fuel consumption/g/kw.h	203.7	
Fuel tank capacity/L	About 360L	
Emission standard	China national IV	
Remarks	Standard	Optional

Chassis hydraulic system Fixed-displacement pump open type system, hydraulic pump is connected to transmission by PTO, and controls the movement of outriggers.

Transmission Xi'an Cummins engine is equipped with imported American Allison 6-speed automatic transmission; Weichai engine is equipped with Shaanxi gear manual transmission, 12 forward gears, 2 reverse, stable and reliable.

Clutch Pull-type (Shaanxi Gear) 。

Transfer case German ZF transfer case (Cummins), with high and low stalls, differential lock. Germany Kaisi Lan transfer case (Weichai).

We reserve the right to modify the design without notice for improvement

<u>Steering</u>	1st、 2nd、 5th axle mechanical steering+ rear axle hydraulic control servo steering.
<u>Axle</u>	5 axle chassis, 2nd、 3rd、 4th axle driving, 1st、 2nd、 5th axle steering, High strength bearing bridge, introduce foreign advanced technology and design, manufactured by famous manufacturers which has a reliable performance. 1st axle: single tire, for steering; 2nd axle: single tire, for steering and driving; 3rd axle: double tires, for driving; 4th axle: double tires, for driving; 5th axle: single tire, for steering.
<u>Driving axis</u>	End tooth coupling type drive axis, which has a big transmission torque. Optimized power transmission, make drive axis drive smooth and reliable.
<u>Suspension</u>	The front suspension uses leaf springs spring balance suspension, rear suspension with double leaf spring suspension structure balance, can jumping up and down to increase the axle, improve pass ability of the vehicle, to achieve the best results of the constraints on the axle.
<u>Brake system</u>	Service brake: Pedal-operated double-circuit air brake. A first circuit acting on, two-axis wheel, a second circuit acting on three, four, five-axis wheels. Parking brake: Bleed brake, acting on the back of four shaft, through the spring of each storage chamber axis work. Auxiliary brake: Engine exhaust brake.
<u>Hydraulic system</u>	Outrigger hydraulic system is quantitative open circuit, quantitative gear pump coupled to the transmission through PTO. Horizontal, vertical and swing cylinders off solenoid valve control: 1 Front leg swing activities control, retractable rear outrigger activities control;

2 Outrigger piping form is more reasonable, more than 30 percent increase efficiency.

Outrigger

Front-swing and back-level outrigger structure which is supported by 4 points. It is operated by full hydraulic, steering console is installed on both sides of the chassis, console mounted spirit level for leveling the crane. Outrigger feet with the ball hinge device accommodating vertical leg. Outrigger designed to lift the entire crane to enable the crane body in a variety of working conditions better work.

Outrigger span:

Longitudinal × lateral.....7.7m×7.9m

Size of outrigger plate.....diameter 450mm

Outrigger reaction force at max. lifting load.....94400N

Electric system

24V DC, negative ground, two batteries, lighting by Chinese road traffic standards, including headlamps, fog lamps, reversing lights and so on. Chassis CAN bus systems, data centralized display device using LCD display; This intelligent system has the data fast, stable, accurate, and can be integrated braking system management and integrated fault diagnosis and boom.

Driver's cab

The new composite structure full width cab, fully enclosed, equipped luxurious comfort. Performance: excellent sealing and anti-corrosion, shock-proof design; wide field of front windshield safety glass, mirrors, electric control scrubbers, electronic doors and lifts, defrost the windshield with indoor air heater, single cold air conditioning, cassette player and other income. Main drive using air suspension seat copilot using simple sleeper meet manipulate ride comfort and convenience of staff. Modeling: coordination symmetry type surface segmentation, feature clear, modern and strong. Bump-surface modeling enhancements cab level, more sophisticated door handles, step ladder painting designs. A pillar rear side windows and decorative uses to make modeling more simple black coating. Sharp headlights and

grille enhance the cab sedate atmosphere, sporty temperament.

Tires

12.00R24-20PR, Suitable for heavy-duty truck, has a strong versatility.

Tool box

There is a maintenance tools in the vehicle.

Overweight decomposition transportation component size list

No.	Name	weight kg	Total weight t	dimensions m	Remarks	
1	Single top	107	0.107	870×822×612	Basic Configuration	
2	Auxiliary hoist system (including rope)	1920	1.920	1250×920×850	Basic Configuration	
3	Counterweight	Counterweight A	6500	36	2.95×1.648×0.208	Basic Configuration
4		Counterweight B	10000		2.95×1.648×0.350	
5		Counterweight C	8500		2.95×1.648×0.324	
6		Counterweight D	5500		1.18×1.056×0.892	
7	Hook block	Main hook	1040	1.830	1794×730×560	Basic Configuration
		Long boom hook	539		1456.5×730×306	
8		Auxiliary hook	251		740×426×426	

Main component parts list

(subject to the actual configuration of products)

No.	Name	Manufacturer
1	Engine of chassis	Xi'an Cummins
		Weichai Power Co., Ltd.
2	Engine of superstructure	Volvo DEUTZ Dalian
3	Transmission	America ALLISON
		Shaanxi Fast Gear Co., Ltd.
4	Steering	Global Steering Gear Manufacturing Co., Ltd. Nantong Steering Gear Co., Ltd. Jiangmen City, Xing Jiang
5	Transfer gear	Germany Kai Silan
		Germany ZF
6	axle	Xuzhou Meritor Axle Co., Ltd.
7	Tire	Double Coin Holdings Ltd subsidiary of Double Coin truck tires / Guizhou Tyre Co., Ltd. / Double Coin Holdings (Rugao) Tire Co., Ltd. / Double Coin Holdings (Chongqing) Tire Co., Ltd.
8	Pump on the chassis	Liyuan Hydraulic Co., Ltd. Xuzhou Branch
9	Pump on the superstructure	Bosch Rexroth
10	Outrigger control valve on the chassis	Eaton Fluid Power Shanghai Co., Ltd.
11	Multi-way valve on the superstructure	Buch, Germany
12	Slewing ring	Xuzhou Rothe Erde
13	Slewing motor	Beijing Howard、Guizhou Liyuan
14	Slewing reducer	Dalian Huarui
15	Main hoisting motor	Bosch Rexroth
		American Sam
16	Main hoisting reducer	Dalian Huarui
17	Main hoisting rope	Portugal OLIVEIRA、France ArcelorMittal
18	Auxiliary winch motor	Bosch Rexroth American Sam
19	Auxiliary hoisting	Dalian Huarui

	reducer	
20	Auxiliary hoisting rope	Portugal OLIVEIRA、 France ArcelorMittal
21	Luffing cylinder	Chengdu into a cylinder Hydraulic Equipment Manufacturing Co., Ltd. XCMG Xuzhou Hydraulic Co.
22	Telescopic cylinders	Chengdu into a cylinder Hydraulic Equipment Manufacturing Co., Ltd. XCMG Xuzhou Hydraulic Co.
23	LMI	Xuzhou Hirschmann Electronics Co., Ltd.
24	Board of boom	Sweden SSAB
25	Vehicle hydraulic system fittings	American Parker
26	Electric pilot handle	Britain P+G (Shanghai faction Fen agent)

Main technical parameters

Main technical parameters in travel status

(Compliance to technical improvements)

Category	Item		Unit	parameter	
Dimensions Parameter	Overall length		mm	15295	
	Overall width		mm	3000	
	Overall height		mm	3820	
	Wheel base		mm	1920+3500+1420+1505	
	Tread		mm	2449/2449/2315/2315/2449	
	Front suspension		mm	2650	
	Rear suspension		mm	2705	
Weight parameter	Total weight in travel status		kg	55000	
	Axle load	1 st	kg	10000	
		2 nd	kg	10000	
		3 rd	kg	13000	
		4 th	kg	13000	
		5 th	kg	9000	
Dynamic parameters	Engine model of chassis			ISME 420 ISM11E4 440	WP12.430 E40 WP12.430N
	Rated power		kw/(r/min)	306/1900 318/1900	316/1900 316/1900
	Rated torque		N.m/(r/min)	2010/1200 2080/1200	2060/1000-1400 2060/1000~1400
	Engine model of superstructure			BF6M1013EC	TAD720VE
	Rated power		kw/(r/min)	174/2300	
	Rated torque		N.m/(r/min)	854/1400	
Driving parameters	Driving speed	Max. speed	km/h	80	
		Min. speed	km/h	3	
	Turning	Min. turning diamete	m	23	

We reserve the right to modify the design without notice for improvement

diameter	Min. turning diameter of boom	m	28
	Min. ground clearance	mm	312
	Approach angle	°	18
	Departure angle	°	13
	Braking distance (at 30 km/h)	m	≤10
	Max. grade ability	%	45
	Oil consumption per 100km	L	65 (Xi'an Cummins)
			72 (Weichai power)
	Exterior noise level	dB(A)	≤88
	Noise level at operator's cab	dB(A)	≤90

Main technical data table for lifting operation

(Compliance to technical improvements)

Category	Item		Unit	Parameter	
Main Lifting Performance	Max. total rated lifting capacity		t	100	
	Min. rated working radius		m	3	
	Turning radius at turntable tail	Counterweight	mm	4500	
		Auxiliary winch	mm	5000	
	Max. load moment	Base boom	kN.m	4380	
		Longest boom	kN.m	1960	
		Longest + jib	kN.m	840	
	Outrigger span (fully extended)	Longitudinal	m	7.7	
		Transverse	m	7.9	
	Lifting height	Base boom	m	13.5	
		Longest boom	m	61.2	
		Longest + jib	m	78	
	Boom length	Base boom	m	13.1	
		Longest boom	m	61	
Longest + jib		m	79.1		
Jib offset angle			°	0、15、30	
Working Speed parameters	Boom elevating raising time	Boom up	s	60	
	Boom extend time	Fully stretch / Fully shrink	s	420	
	Max. swing speed		m/min	2	
	Outrigger extending and retracting time	Outrigger beam	Extending at the same time	s	20
			Retracting at the same time	s	20
		Outrigger jack	Extending at the same time	s	50
			Retracting at the same time	s	40
	Lifting speed(single line, fourth layer)	Main winch system	m/min	130	
Auxiliary winch system		m/min	105		
Work noise	Exterior noise level		dB (A)	≤122	
	Noise level at operator's cab		dB (A)	≤90	

We reserve the right to modify the design without notice for improvement

Lifting Performance Table

XCT100 truck crane lifting performance table of main boom unit: t

Fully extended 7.9m counterweight 36t												
Radius m	Length m											
	13.1	17.5	21.9	26.3	30.7	35.1	39.5	43.9	48.4	52.8	57.2	61
3	100.0	91.0										
3.5	100.0	89.0										
4	97.0	86.5	81.0	65.0								
4.5	90.0	82.5	76.0	65.0								
5	84.0	75.0	70.0	64.0	52.0							
6	73.0	69.0	63.0	62.0	50.0	43.3						
7	60.0	62.0	56.0	59.0	48.0	35.0	33.2					
8	54.0	52.0	52.0	53.0	43.5	32.0	28.0	25.0				
9	46.0	45.5	47.0	48.0	40.0	29.0	27.0	24.0	23.0			
10	39.5	40.0	39.0	43.8	37.0	26.5	25.5	23.5	20.0	18.0		
12		33.9	33.6	34.5	32.0	23.0	22.0	22.5	19.0	16.5	14.0	11.4
14		26.1	25.5	26.7	27.5	20.0	19.0	19.0	18.0	15.0	12.5	10.5
16			20.5	21.3	22.1	17.5	16.0	16.8	16.5	13.7	11.5	10.0
18			16.6	17.4	18.2	15.4	14.5	15.4	15.3	12.8	10.7	9.5
20				14.4	15.2	13.5	13.0	14.5	14.0	12.0	10.0	9.0
22				12.1	12.9	12.4	12.0	13.0	13.0	11.0	9.4	8.5
24					11.0	10.5	10.5	11.3	11.5	10.0	8.6	8.0
26					9.4	8.9	9.7	9.7	9.9	9.2	8.1	7.4
28						7.6	8.3	8.3	8.6	8.5	7.5	7.0
30						6.4	7.2	7.2	7.4	7.7	7.1	6.4
32							6.2	6.2	6.4	6.7	6.7	6.0
34							5.3	5.3	5.6	5.9	6.2	5.6
36								4.6	4.8	5.1	5.5	5.1
38									4.1	4.5	4.9	4.7
40									3.6	3.9	4.3	4.3
42										3.4	3.7	3.8
44										2.9	3.3	3.3
46											2.8	2.9
48											2.5	2.5
50												2.1
52												1.9
hook	110t						60t					
Parts of line	12	10	9	7	6	5	4	3	2			

We reserve the right to modify the design without notice for improvement

XCT100 truck crane lifting performance table of main boom (without counterweight) unit: t

XCT100 main boom performance fully extended 7.9m counterweight 0t												
Radius m	Length m											
	13.1	17.5	21.9	26.3	30.7	35.1	39.5	43.9	48.4	52.8	57.2	61
3	100.0	91.0										
3.5	100.0	89.0										
4	97.0	86.5	81.0	65.0								
4.5	90.0	82.5	76.0	65.0								
5	84.0	75.0	70.0	64.0	52.0							
6	51.9	52.1	51.7	52.8	50.0	40.0						
7	36.0	36.2	35.8	36.8	38.0	35.0	31.0					
8	26.8	27.0	26.6	27.6	28.6	28.0	28.0	24.5				
9	19.7	20.0	19.6	20.7	21.9	21.2	22.3	22.2	21.5			
10	16.0	15.2	14.9	15.8	16.9	16.2	17.3	17.3	17.6	17.5		
12		9.4	9.1	9.9	10.9	10.3	11.3	11.2	11.4	11.9	12.4	11.0
14		5.9	5.7	6.5	7.4	6.8	7.7	7.7	7.9	8.3	8.7	8.8
16			3.5	4.2	5.0	4.6	5.3	5.3	5.6	5.9	6.4	6.4
18			1.9	2.6	3.4	3.0	3.7	3.7	4.0	4.2	4.7	4.8
20				1.4	2.3	1.8	2.5	2.5	2.7	3.1	3.4	3.5
22					1.3		1.5	1.5	1.8	2.1	2.4	2.5
24										1.4	1.7	1.7
26												
28												
Hook	110t						60t					
Parts of line	12	10	9	7	6	5	4	3		2		

XCT100 truck crane lifting performance table of jib

unit: t

XCT100 performance of jib fully extended 7.9m counterweight 36t																		
Boom length m	52800			57200			61000			52800			57200			61000		
Jib length m	10600									18100								
radius\angle	0	15	30	0	15	30	0	15	30	0	15	30	0	15	30	0	15	30
16	7.0																	
18	7.0	5.4		7.0			7.0											
20	6.8	5.2	3.5	6.8	5.2		6.4	5.2		3.2								
22	6.3	4.9	3.3	6.3	4.9	3.3	6.0	4.9	3.3	3.0	2.4		3.2			3.2		
24	5.9	4.7	3.3	5.9	4.7	3.3	5.6	4.7	3.3	3.0	2.2		3.0			3.0		
26	5.6	4.4	3.2	5.6	4.4	3.2	5.4	4.4	3.2	2.8	2.2	1.8	2.8	2.2		2.8	2.2	
28	5.3	4.2	3.2	5.3	4.2	3.2	5.2	4.2	3.2	2.8	2.2	1.8	2.8	2.2	1.8	2.8	2.2	
30	5.1	4.0	3.0	5.1	4.0	3.0	4.9	4.0	3.0	2.6	2.0	1.8	2.6	2.0	1.8	2.6	2.0	1.8
32	4.7	3.9	3.0	4.7	3.9	3.0	4.6	3.9	3.0	2.6	2.0	1.8	2.6	2.0	1.8	2.6	2.0	1.8
34	4.5	3.7	2.8	4.5	3.7	2.8	4.2	3.7	2.8	2.4	2.0	1.6	2.4	2.0	1.6	2.4	2.0	1.6
36	4.2	3.6	2.8	4.2	3.6	2.8	3.9	3.5	2.8	2.4	2.0	1.6	2.4	2.0	1.6	2.4	2.0	1.6
38	4.0	3.5	2.7	4.0	3.5	2.7	3.8	3.4	2.7	2.2	1.8	1.6	2.2	1.8	1.6	2.2	1.8	1.6
40	3.7	3.4	2.7	3.6	3.4	2.7	3.5	3.2	2.7	2.2	1.8	1.6	2.2	1.8	1.6	2.2	1.8	1.6
42	3.5	3.3	2.7	3.2	3.3	2.7	3.2	3.1	2.7	2.2	1.8	1.6	2.0	1.8	1.6	2.0	1.8	1.6
44	3.2	3.2	2.5	2.9	3.0	2.5	2.9	3.0	2.5	2.0	1.8	1.6	2.0	1.8	1.6	1.8	1.8	1.5
46	2.9	2.9	2.5	2.6	2.7	2.5	2.6	2.6	2.5	2.0	1.8	1.6	1.9	1.8	1.6	1.3	1.5	1.5
48	2.6	2.6	2.4	2.3	2.4	2.5	2.3	2.4	2.5	2.0	1.6	1.6	1.6	1.5	1.6	1.3	1.4	1.3
50	2.3	2.4	2.3	2.0	2.1	2.2	2.0	2.1	2.2	2.0	1.6	1.5	1.5	1.5	1.4	1.3	1.4	1.2
52	2.0	2.1	2.2	1.8	1.9	2.0	1.7	1.9	2.0	1.8	1.6	1.4	1.5	1.5	1.4	1.2	1.3	1.1
54	1.8	1.9	1.9	1.6	1.7	1.7	1.5	1.7	1.7	1.8	1.6	1.4	1.5	1.5	1.4	1.2	1.2	1.1
56				1.4	1.4	1.4	1.4	1.4	1.4	1.7	1.6	1.4	1.4	1.5	1.4	1.0	1.0	1.1
58							1.1	1.2	1.3	1.5	1.5	1.4	1.2	1.2	1.2			1.0
60										1.3	1.4	1.3		1.1	1.2			
Telescopic way	12222			22222			33333			12222			22222			33333		

We reserve the right to modify the design without notice for improvement

XCT100 truck crane lifting performance table of jib (without counterweight)**unit: t**

XCT100 performance of jib fully extended 7.9m counterweight 0t																		
Boom length m	52800			57200			61000			52800			57200			61000		
Jib length m	10600									18100								
radius\angle	0	15	30	0	15	30	0	15	30	0	15	30	0	15	30	0	15	30
16	5.8																	
18	4.4	5.0		4.1			4.0											
20	3.4	3.8	3.5	3.1	3.5		3.0	3.5		3.2								
22	2.6	3.0	3.3	2.3	2.7	3.1	2.3	2.7	3.1	2.8	2.4		2.5			2.4		
24	2.0	2.3	2.6	1.7	2.0	2.4	1.7	2.0	2.4	2.2	2.2		1.8			1.8		
26	1.4	1.8	2.0	1.1	1.5	1.8	1.1	1.5	1.8	1.7	2.2	1.8	1.3	2.0		1.3	1.9	
28	1.1	1.4	1.6		1.1	1.3		1.1	1.3	1.2	1.7	1.8		1.4	1.8		1.4	
30			1.1								1.3	1.7		1.1	1.5		1.0	1.4
32												1.3			1.1			1.1
34												1.0						

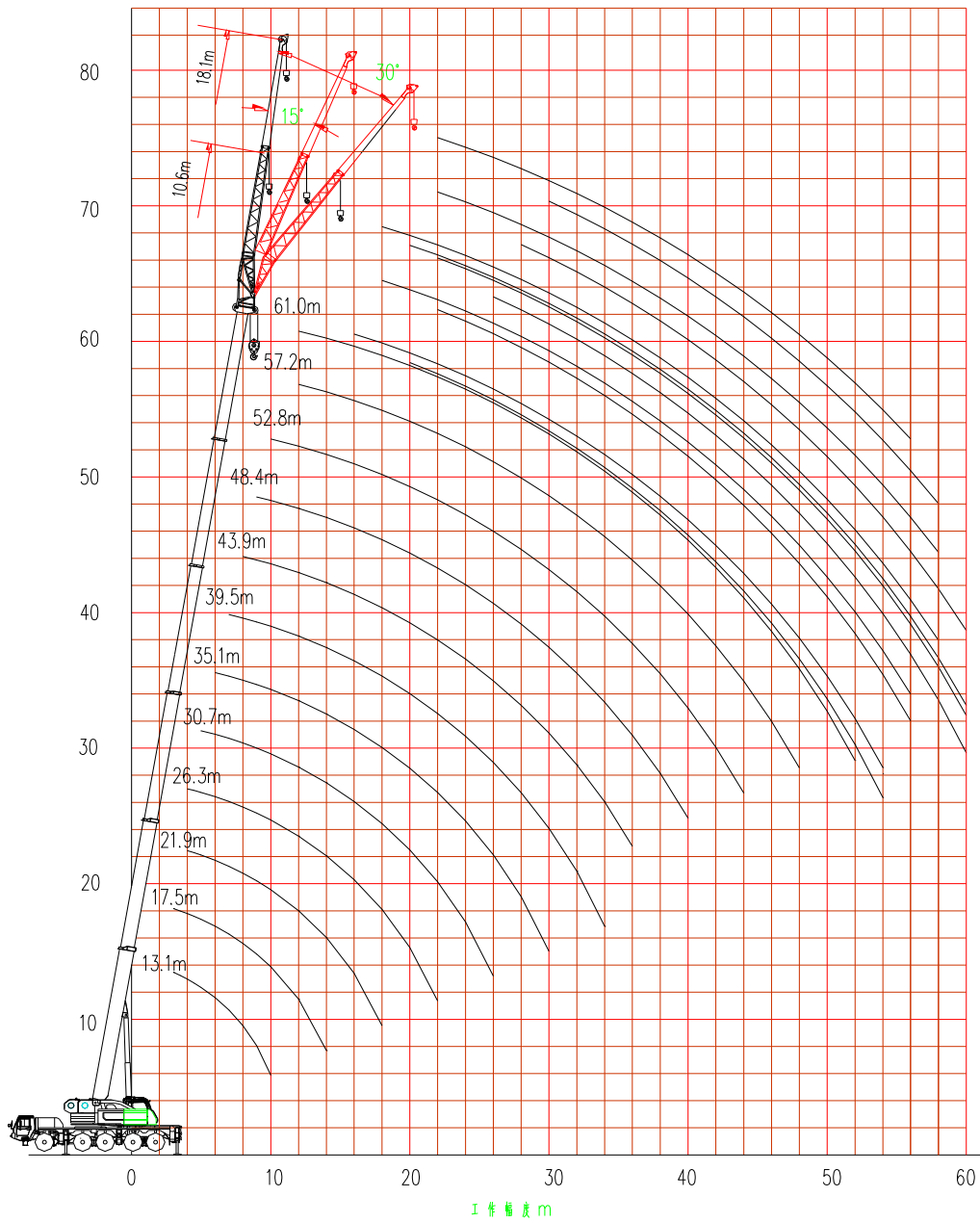
- 1) The total nominal value of lifting the table is the largest total on a flat solid surface of the crane can guarantee starting weight, including the weight of the hook and spreader.
- 2) Work table amplitude lifting heavy objects off the ground when the magnitude of the actual values, including the lifting boom, including the amount of deformation, and thus should be considered before lifting boom deformation.
- 3) Only allowed in five (3s when the average instantaneous wind speed from 14.1m / s, pressure 125N / m²) wind carried the following operations.
- 4) Before lifting the weight of the operator and the scope of work must select the appropriate object after understanding the working condition beyond values in the table is strictly prohibited. When the magnitude and boom length between two adjacent values should be determined based on the lesser of the two numerical values of the lifting operation.
- 5) The scope of work should be the main boom elevation, even unloaded, nor should the main boom elevation in the range, but beware of the

We reserve the right to modify the design without notice for improvement

machine tipping.

- 6) Table telescopic main boom length shall be the rate of the sections boom stretched out.
- 7) Lifting the performance of a single pulley boom end with the main boom lifting performance, but maximum weight not exceeding 7000kg.
- 8) The parameters listed in the table refers to the rated time without jib from the weight, when the main boom head is equipped with jib boom, boom rated lifting capacity based on the actual situation, you should subtract 5000kg.

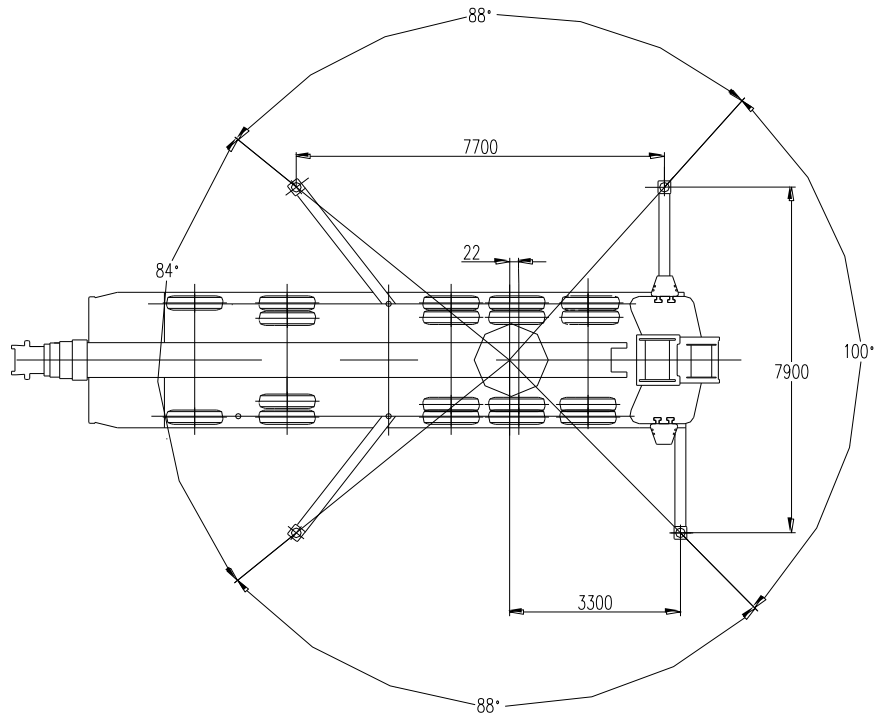
Lifting height curves



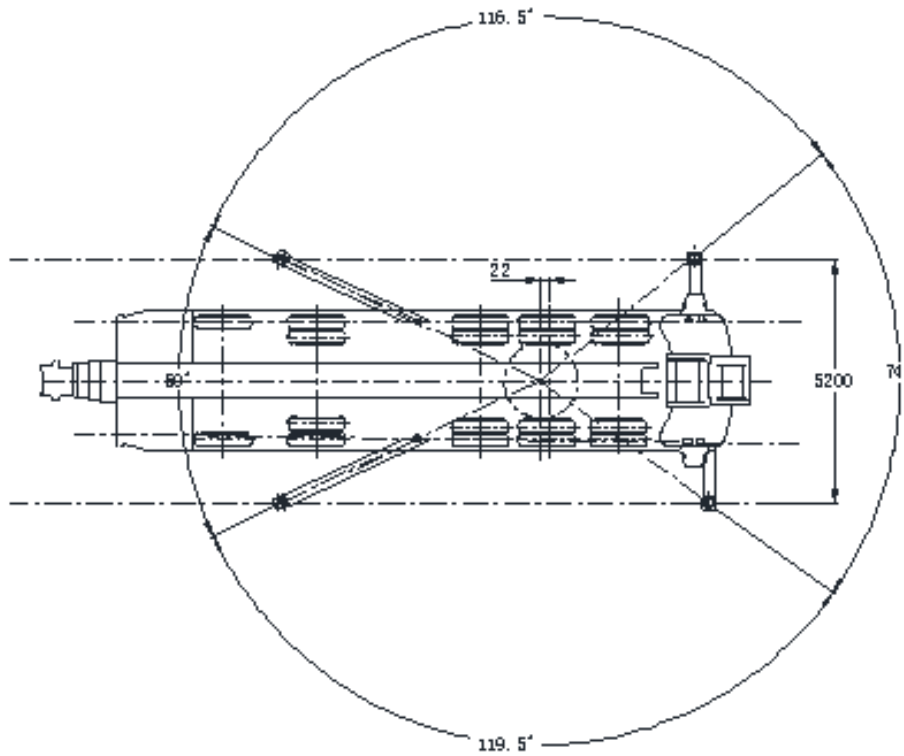
We reserve the right to modify the design without notice for improvement

Outrigger working range

Working areas with outrigger fully-extended



Working areas with outrigger half-extended



We reserve the right to modify the design without notice for improvement

Packing List of XCT100

Xuzhou Heavy Machinery Co., Ltd.	Packing list				1 page totally
					Page 1
Product Type	XZ5557JQZ100				
VIN (Serial number)					
Host					
Name	Name	Name	Name	Name	
Truck crane	Truck crane	Truck crane	Truck crane	Truck crane	
Files as the vehicle					
No.	Name	Unit	Quantity	Remarks	
1	Motor vehicle product certification		1		
2	Product Manual		2		
3	Product warranty		1		
4	Maintenance Manual		1		
5	Vehicle Certificate of Conformity		1		
6	LMI (User Manual)		1		
7	Diesel product certification		1		
8	Diesel manual		1		
9	Transmission product certification		1		
10	Manual of transmission		1		
11	Manual of air conditioning		1		
12					
13					
14					
15					
16					
17					
18					

Supplied tools list of XCT100

No.	SAP Material code	Name and Specification	Quantity	Remarks
1	819904309	NST-402 tool box	1	
2	840500694	Hexagon wrench 2.5	1	Installed in the NST-402 toolbox tools
3	840500695	Hexagon wrench 3	1	
4	840500696	Hexagon wrench 4	1	
5	840500268	Hexagon wrench 5	1	
6	840500698	Hexagon wrench 6	1	
7	840500699	Hexagon wrench 8	1	
8	840500700	Hexagon wrench 10	1	
9	840500701	Hexagon wrench 12	1	
10	840500702	Hexagon wrench 14	1	
11	840500452	Double-ended spanner 6×7	1	
12	840500703	Double-ended spanner 8×10	1	
13	840500704	Double-ended spanner 9×11	1	
14	840500689	Double-ended spanner 12×14	1	
15	840500764	Double-ended spanner 13×15	1	
16	840500208	Double-ended spanner 16×18	1	
17	840500690	Double-ended spanner 17×19	1	
18	840500766	Double-ended spanner 22×24	1	
19	840500691	Double-ended spanner 27×30	1	
20	840500692	Double-ended spanner 32×36	1	
21	840500693	Double-ended spanner 41×46	1	
22	840500777	Double ring spanner 12×14	1	
23	840500763	Double ring spanner 17×19	1	
24	840500767	Cruciform screwdriver 100×6	1	
25	840500768	Screwdriver 100×6	1	Installed in the NST-402
26	801500802	Square head hammer hand 0.5kg	1	
27	840500674	Wire cutters L=150	1	

28	840500675	Wrench 150×18	1	toolbox tools
29	840500676	Wrench 300×36	1	
30	819904310	Grease Gun (Leveraged) 120CC	1	
31	819904311	Inflating Gun GAS-1	1	
32	840500677	Manual socket wrench Sleeve 10mm	1	
33	840500678	Manual socket wrench Sleeve 11mm	1	
34	840500679	Manual socket wrench Sleeve 12mm	1	
35	840500680	Manual socket wrench Sleeve 14mm	1	
36	840500681	Manual socket wrench Sleeve 17mm	1	
37	840500682	Manual socket wrench Sleeve 19mm	1	
38	840500683	Manual socket wrench Sleeve 22mm	1	
39	840500684	Manual socket wrench Sleeve 24mm	1	
40	840500685	Manual socket wrench Sleeve 27mm	1	
41	840500686	Manual socket wrench Sleeve 30mm	1	
42	840500687	Manual socket wrench Sleeve32mm	1	
43	840500688	Knurled ratchet wrench 10"	1	
44	801500777	Sliding head handle 10"	1	
45	819904312	Quick rocker 16-1/4"	1	
46	801500780	Arbors 5"	1	
47	801500781	Arbors 10"	1	
48	803112493	Cheer hose PUH-12B(8×12×9m)	1	
49	803602649	Air reservoir connectorM14×1.5	1	
50	859938149	Pipe clamp 14"	1	
51	840500225	Single-head wrench 50"	1	
52	803500007	Working Light 24V	1	
53	840500758	T971110 Tire wrench	1	
54	840500761	T971120 Afterburner rod	1	
55	819900454	AK-120 First-aid kit	1	

56	840500775	YF2004-1 Warning triangle	1	
57	840500435	Single-head wrench 41	1	
58	819900607	Data distribution trolley bag	1	
59	859900168	Large inflatable air cock 151-013	1	
60	819901698	Tire inflator gun 151-018	1	

Supplied spare parts list of XCT100

No.	SAP Material code	Name and Specification	Quantity	Remarks
1	801100610	O-RING 6.5×1.5	2	
2	801100611	O-RING 8×1.5	6	
3	801100588	O-RING 10×1.5	2	
4	801100612	O-RING 12×2.0	2	
5	801100613	O-RING 15×2.0	4	
6	801100615	O-RING 20×2.0	4	
7	801100437	O-RING 26×2.0	2	
8	801100256	O-RING 32×2.5	4	
9	801100439	O-RING 38×2.5	2	
10	801100614	O-RING 16.3×2.4	4	
11	801100617	O-RING 25.3×2.4	4	
12	803109538	Pressure measuring device PGB.0631.060-1000	1	
13	803109537	Pressure measuring device PGB.0631.400-1000	1	
14	803601014	Rocker Switch JK932-006	1	
15	803600725	Relays JQ202S-FLO	1	
16	803500196	24V Lamp Parts 6SQZ.359.001	2	
17	803108863	Oil filter cartridge	1	Apply engine TAD720VE/BF6M 1013EC only
18	803108862	Diesel fuel filter element (fine filter)	2	
19	800100179	Diesel fuel filter element (coarse filter)	1	
20	803000515	DC pump BYPASS2000-2	1	
21	803100328	H type hose fittings 16×12000 18L 18L 21MPa	2	
22	803109675	GE18LR3/4EDOMDA3C fitting imported	2	
23	803602171	6603-12-12 quick-change female connector imported	2	
24	803200421	6659-12 dust plug imported	2	
25	840700036	Color nylon sling 2T*2.5M (Two buckle)	1	

Easily damaged spare parts list in 2000 hours of XCT100

(5% percent of total price of product)

Easily damaged spare parts schedule in 2000 hours of XCT100				
Item	Material code	Name	ENGLISH	Quantity
ITEM		NAME		QTY
1	QAY200.02.1.38	Slider		3
2	QY130K.02.1-4	Slider		50
3	QAY180.02.1-9	Slider		2
4	QAY180.02.1.15	Slider assembly		2
5	QAY200.02.1.38	Slider		3
6	QY130K.02.1-4	Slider		46
7	QAY180.02.1-9	Slider		2
8	QAY180.02.1.15	Slider assembly		2
9	XCT100.02.2-2	Slider		2
10	XCT100.02.2-3	Slider		2
11	XCT100.02.2-6	Slider		2
12	XCT100.02.2-7	Slider		2
13	XCT100.02.2-2	Slider		2
14	XCT100.02.2-3	Slider		2
15	XCT100.02.2-6	Slider		2
16	XCT100.02.3-2	Slider		2
17	QAY180.02.1.15	Slider assembly		2
18	QAY180.02.1-9	Slider		2
19	QY130K.02.1-4	Slider		42
20	QAY200.02.1.38	Slider		3
21	XCT100.02.2-2	Slider		2
22	XCT100.02.4-2	Slider		2
23	XCT100.02.2-6	Slider		2
24	XCT100.02.4-3	Slider		2
25	QAY180.02.1.15	Slider assembly		2
26	QAY180.02.5-5	Slider		2
27	QY130K.02.1-4	Slider		40
28	QAY200.02.1.38	Slider		3
29	XCT100.02.2-2	Slider		2
30	XCT100.02.5-2	Slider		2
31	XCT100.02.5-3	Slider		2
32	XCT100.02.5-4	Slider		2
33	QAY180.02.5.4	Slider assembly		2
34	QAY180.02.5-5	Slider		2
35	QY130K.02.1-4	Slider		36
36	QAY200.02.1.38	Slider		3
37	XCT100.02.2-2	Slider		2
38	XCT100.02.6-2	Slider		2
39	XCT100.02.6-3	Slider		2
40	XCT100.02.6-4	Slider		2
41	QAY125.14.1.16-1	Pulley		1
42	QY100K.14.1.5-1	Pulley		1
43	QUY100.01.1.10-1	Pulley		1

We reserve the right to modify the design without notice for improvement

44	DC5028NR	Bearing	2
45	SL04 5028-PP	Bearing	2
46	QY100K.14.3-2	Wheel	3
47	QY100K.14.1-13	Wheel	2
48	QY100K.14.1-17	Wheel	2
49	RFA-800X20F-Y	Return filter	1
50	TF-800X180F-Y	Suction filter	1
51		All the O-RING	1
52		Telescopic cylinder repair kits	1
53		Luffing cylinder repair kits	1
54	6-QAW-180D	Battery	1
55	2.5*100	Ties	50
56	192900-0344	Wire hoop (24)	5
57	192900-0056	Male plug(12-19)	1
58	192900-0425	Male plug(0-48)	1
59	192900-0077	Female plug (12-19)	1
60	192900-0437	Female plug (0-48)	1
61	192900-0074	Female plug (4-28)	1
62	192900-0266	Female plug (0-12)	1
63	192900-0508	Female plug (2-13)	1
64	15366067	Gasket [U.S.]	40
65	192900-0402	Gasket (16)	5
66	192900-0458	Gasket(24)	5
67	192900-0457	Gasket(14)	2
68	11080031010	Electronic accelerator pedal	1
69	HSK-1	Rear outline marker lamps	2
70	GF-185	Counter	1
71	1GA 998 522-011	Work Light [Germany HELLA]	1
72	8GH002090-251	Light bulb	2
73	DJ7021-6.3-21	Two core composite socket	8
74	DJ7081-6.3-21	Eight-pin socket jacket	3
75	15326678	Two pin plug [U.S.]	20
76	15326623	Three pin plug [U.S.]	20
77	15326633	Four core composite plug	3
78	15326640	Six core composite plug	2
79	15304732	Male terminal [U.S.]	40
80	15305170	Blind block [U.S.]	40
81	15317832	Insert [U.S.]	20
82	15326922	Fourteen core composite plug	2
83	15326679	Two core composite socket [U.S.]	28
84	15304720	Female terminal [U.S.]	40
85	15326614	Three core composite socket [U.S.]	20
86	15326631	Four core composite socket	4
87	15326910	Twelve core composite socket	2
88	15326917	Fourteen core composite socket	2

We reserve the right to modify the design without notice for improvement

89	A2B-Z	Heavy hammer lifting height limiter	1
90	A2B-Z	Heavy hammer lifting height limiter	1
91	JQ202S-KLO	Relays	2
92	DW-AD-603-M18-120	Proximity Switch	2
93	DW-AS-623-M12	Proximity Switch	2
94	121668-0002	Male terminal(power)	50
95	121668-0102	Female terminal(power)	50
96	PLC-RSC-24DC/21-21	Relay import	1
97	BID2-G180-AP6-H141/S212	Proximity Switch [Germany TURCK]	2
98	TCP 25/DC32V	Insurance tablets25A	2
99	TCP 30/DC32V	Insurance tablets30A	2
100	UK 6-FSI/C-LED24	Fuse Base	10
101	TCP 10/DC32V	Insurance tablets10A	2
102	TCP 15/DC32V	Insurance tablets15A	2
103	192990-2530	Female terminal(signal)	50
104	192990-2490	Male terminal(signal)	50
105	TCP 5/DC32V	Insurance tablets5A	2
106	15326678	Two core composite plug	35
107	DL229G	Electric horn	1
108	AE-TM56B	LCD color display	1
109	AE-CM103	Webcam	2
110	SG253	Flasher relay	2
111	KF-1PW	Foot Switch	1
112	DAVS300/3401	Oil pressure sensor	1