

CRAWLER CRANE ZCC800H



ZOOMLION

Zoomlion Heavy Industry Science & Technology Co.,Ltd.

Add:Zoomlion Overseas Building, No.613, 3rd Section, Furong Middle Road, Yuhua District, Changsha, Hunan, P.R.China 410205

Copyright © 2015 Zoomlion. All rights reserved. Reproduction and copying of any part of the Contents is not allowed for any purposes without Zoomlion's written approval.
Note: No product coating appearance shall be subject to sample.



Printed in China. VN : EV-MC-201509-01

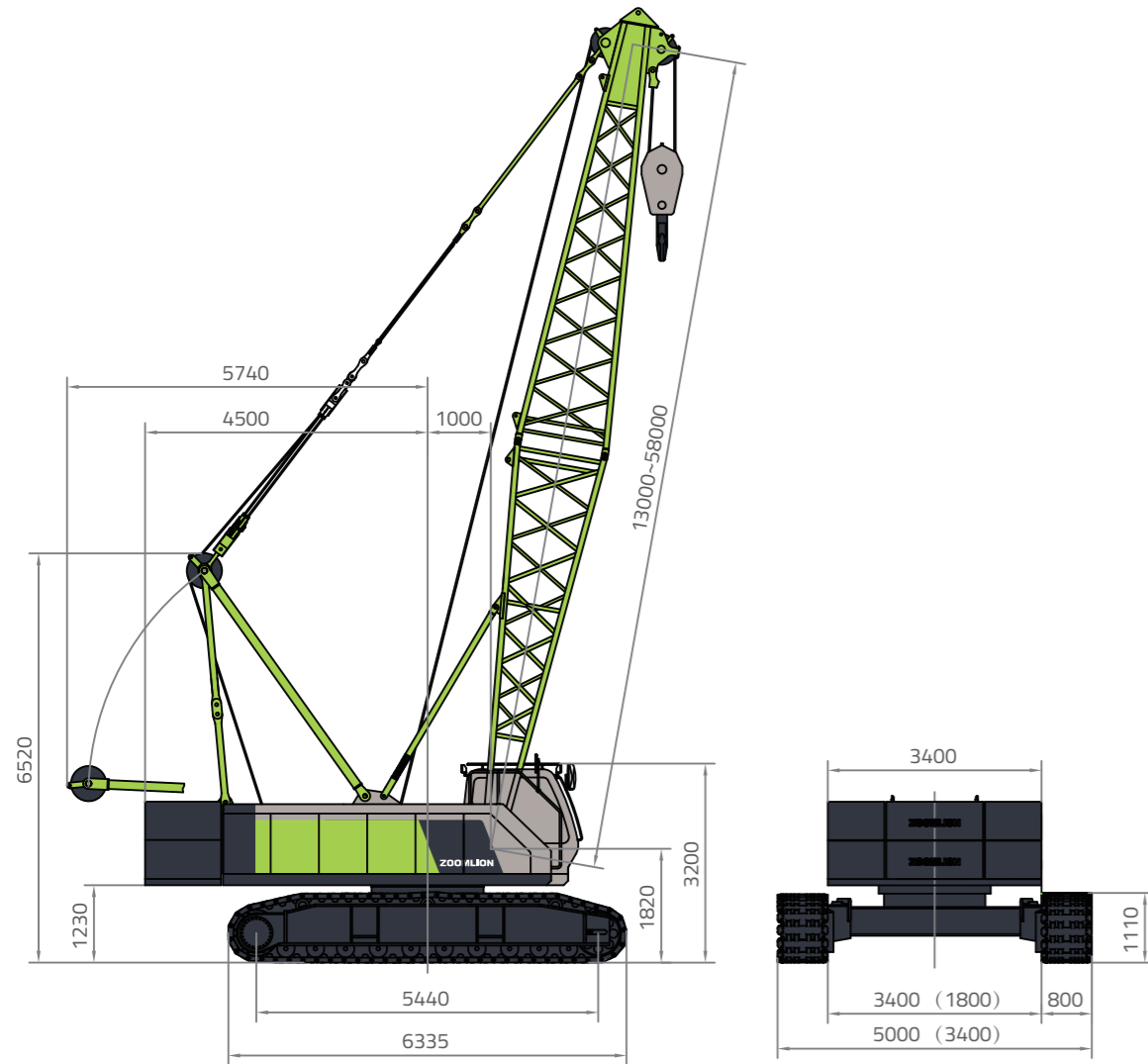
ZOOMLION

en.zoomlion.com

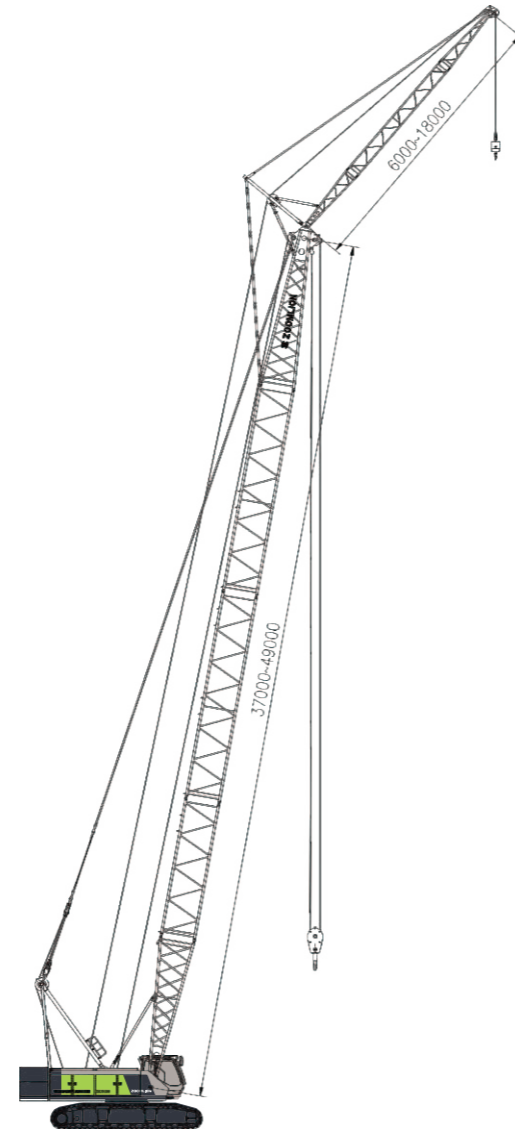
Courtesy of Crane.Market

Overall Dimensions And Main Parameters

Overall dimensions of S boom



Overall dimensions of SF boom



Main Technical Parameters

Item	Unit	Value	Remarks	
Max. lifting capacity × radius	t×m	80×4		
Max. lifting capacity on fixed jib	t	7		
Max. lifting capacity on luffing jib	t	15		
Main boom length	m	13-58		
Fixed jib length	m	6-18		
Max. length of main boom with fixed jib	m	49+18		
Luffing jib length	m	16m-34m		
Max. length of main boom with luffing jib	m	43.5m+34m		
Main boom angle	°	30-80		
Fixed jib angle	°	10, 30		
Single rope speed of winches	Hoisting winch 1(normal/with free-fall function)	m/min	125/110	With optional free-fall function
	Hoisting winch2	m/min	125	
	Derricking winch	m/min	93	
Slewing speed	rpm	0-2		
Traveling speed	km/h	0-1.57		
Max. gradeability	%	30	With basic boom and counterweight over front	
Ground pressure	MPa	0.083		
Deadweight	t	72.8	With basic boom	
Crane counterweight	t	27		
Overall dimensions(L × W × H)	mm	13500×5000(3400)×3200	With A-frame and main boom pivot section	
Engine	Model		WP10.270N	Weichai Power
	Rated power / rotational speed	kW/rpm	199/1900	
	Max.output torque / rotational speed	Nm/rpm	1270/1200- 1500	
	Exhaust emission	/	National Stage III	
Distance between track center × crawler contact length × crawler width	mm	2600×5440×800	Crawler carrier retracted	
	mm	4200×5440×800	Crawler carrier extended	
Noise	Noise level outside the operator's cab during operation	dB	≤ 107	
	Noise level in the operator's cab during operation	dB	≤ 79	

Boom Configuration Description



Main boom
Maximum lifting capacity:80t×4m
Main boom length:13m-58m

Main boom with fixed jib
Maximum lifting capacity:26.9t×9m
Main boom length:37m-49m

Main boom with fixed jib
Maximum lifting capacity:7t×24m
Main boom length:37m-49m
Fixed jib length:6m-18m

Main boom with fixed jib (with main load hook)
Maximum lifting capacity:6.2t×12m
Main boom length:37m-49m
Fixed jib length:6m-18m

Main boom with luffing jib
Maximum lifting capacity:15t×14m
Main boom length:37m-49m
Fixed jib length:6m-18m

Assembly of main boom

Main boom length(m)	Main boom pivot section(6.5m)	Main boom extension(3.0m)*	3m main boom intermediate section(3.0m)	6m main boom intermediate section(6.0m)	9m main boom intermediate section(9.0m)	Head section (1.0m)*
25.5	1	1	0	1	1	1
28.5	1	1	0	0	2	1
31.5	1	1	1	0	2	1
34.5	1	1	0	1	2	1
37.5	1	1	0	0	3	1
40.5	1	1	1	0	3	1
43.5	1	1	0	1	3	1

Note: Main boom sections marked with the sign “*” are the exclusive components of main boom in luffing jib configuration.

Assembly of luffing jib

Luffing jib length(m)	Main boom pivot section(6.5m)	3m main boom intermediate section(3.0m)	6m main boom intermediate section(6.0m)	9m main boom intermediate section(9.0m)	Head section (1.0m)
16	1	0	1	0	1
19	1	0	0	1	1
22	1	1	0	1	1
25	1	0	1	1	1
28	1	1	1	1	1
31	1	0	2	1	1
34	1	1	2	1	1

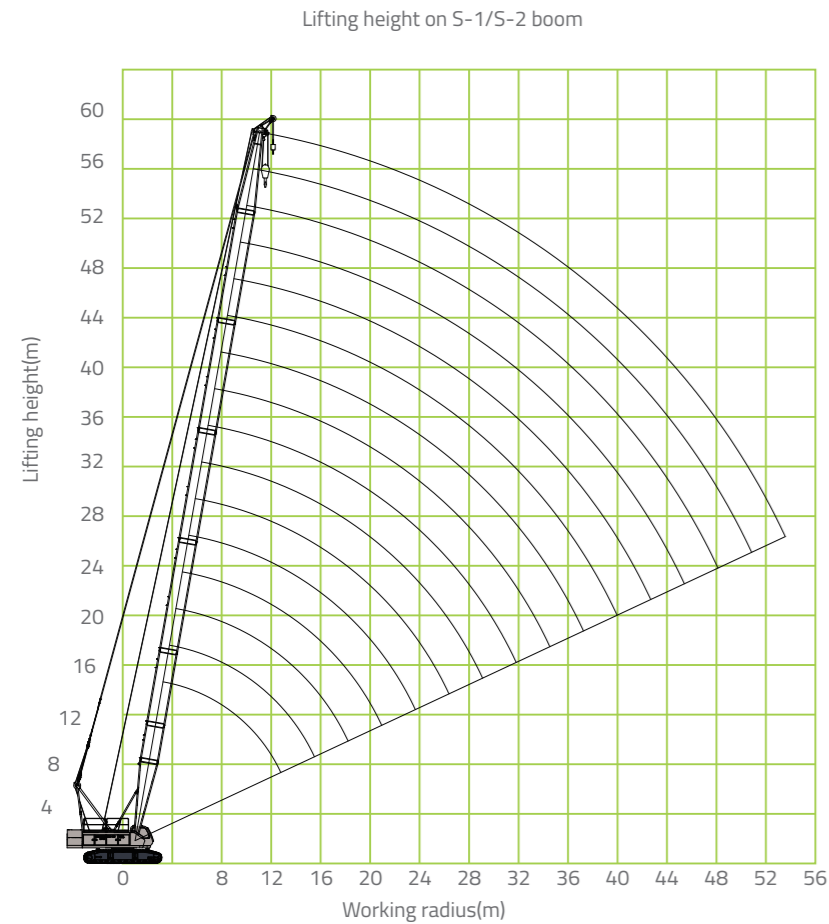
Boom combination and main boom angle permitted under Luffing jib configuration

Main boom length	Luffing jib length	16m	19m	22m	25m	28m	31m	34m
		25.5m	65°-85°	65°-85°	65°-85°	-	-	-
28.5m	65°-85°	65°-85°	65°-85°	65°-85°	-	-	-	
31.5m	65°-85°	65°-85°	65°-85°	65°-85°	65°-85°	-	-	
34.5m	65°-85°	65°-85°	65°-85°	65°-85°	65°-85°	65°-85°	-	
37.5m	65°-85°	65°-85°	65°-85°	65°-85°	65°-85°	65°-85°	65°-85°	
40.5m	65°-85°	65°-85°	65°-85°	65°-85°	65°-85°	65°-85°	65°-85°	
43.5m	65°-85°	65°-85°	65°-85°	65°-85°	65°-85°	65°-85°	65°-85°	
Hook	16T	√	√	√	√	√	√	×
	8T	√	√	√	√	√	√	√

Note:The sign “—” indicates that luffing jib length is not available during folding assembly of luffing jib.

Lifting Performance

Lifting performance on S-1/S-2 boom



S-1	Main Boom Length (m)								
	13	16	19	22	25	28	31	34	37
Radius(m)	13	16	19	22	25	28	31	34	37
4	80								
5	68	66.8							
6	52.3	52	51.8	51.7					
7	42.3	42	41.9	41.7	40	39.5			
8	35.5	35.2	35	34.8	34.6	33.97	33.8	33.5	
9	29.5	29.3	29.2	29.1	29	28.9	28.8	28.6	28.4
10	26.7	26.4	26.2	26	25.7	25.3	25	24.8	24.6
12	19.5	19.4	19.3	19.2	19.1	19	18.9	18.8	18.7
14		17.2	17	16.9	16.6	16.2	16	15.8	15.5
16			14.37	14.2	13.9	13.6	13.4	13.1	12.9
18				12.2	11.9	11.6	11.4	11.1	11
20					10.3	10	9.8	9.7	9.5
22						8.5	8.45	8.4	8.3
24							7.7	7.65	7.5
26								6.8	6.75
28									6
30									5.5
32									4.2

Unit:t

Lifting Performance

Lifting performance on S-1/S-2 boom

S-1	Main Boom Length (m)						
	40	43	46	49	52	55	58
9							
10	23.8	23.2	22.6				
12	18.6	18.6	18.2	17.8	17.8		
14	15.5	15.2	15	14.7	14.5	14.3	14
16	12.8	12.7	12.5	12.3	12.1	12	11.5
18	10.9	10.7	10.5	10.3	10.2	10	9.9
20	9.4	9.3	9.2	9	8.9	8.8	8.6
22	8.2	8.2	8.1	8	7.9	7.7	7.5
24	7.45	7.2	7.1	7	6.9	6.8	6.6
26	6.6	6.5	6.4	6.2	6	5.8	5.7
28	5.8	5.7	5.6	5.55	5.5	5.4	5.1
30	5.3	5.2	5.1	5	4.8	4.6	4.5
32	4.2	4.2	4.1	4	4	4	3.8
34	4.1	4.1	4	3.9	3.8	3.7	3.4
36		3.8	3.7	3.5	3.4	3.2	2.9
38			3.2	3.1	3.05	3	2.9
40				2.8	2.7	2.6	2.5
42					2.3	2.3	2.2
44						2	1.8
46							1.6
48							1.5
50							0.8

Unit:t

S-2	37m main boom					
	Fixed jib length(m)					
	6		12		18	
Fixed jib angle (°)	10	30	10	30	10	30
Radius(m)						
9	26.9	26.7	26.7	26.4	26.5	26.1
10	23.1	23	22.9	22.7	22.7	22.4
12	17.7	17.6	17.5	17.4	17.4	17.1
14	14	13.9	13.9	13.7	13.7	13.5
16	11.4	11.3	11.3	11.1	11.1	10.9
18	9.5	9.5	9.4	9.3	9.2	9.1
20	7.9	7.9	7.8	7.7	7.7	7.5
22	6.6	6.6	6.5	6.4	6.4	6.3
24	5.5	5.5	5.4	5.3	5.3	5.2
26	4.7	4.7	4.6	4.6	4.5	4.4
28	3.9	3.9	3.8	3.8	3.7	3.6
30	3.2	3.2	3.1	3.1	3	3
32	2.7	2.7	2.6	2.6	2.5	2.5

Note:

- (1)The rated load must comply with the EN 13000 standard.
- (2)The rated load is applicable to 360° working range.
- (3)The radius is the horizontal distance from central axle of slewing ring to centerline of lifting load.
- (4)The weight of load hook,wire rope and other load handling device subtracted from the rated load is the actual load.
- (5)When the crane is working with rated load, the ground must be flat and solid and its gradient must be less than 1%.
- (6)If the working radius of rated load and boom length are not listed in the table above,never operate the crane.
- (7)The boom configurations and relevant anchoring rods combination must be performed in accordance with the requirements in Operator's Manual.
- (8)A-frame must be erected in working conditions.
- (9)The tilting-back supports must be installed in any boom configurations.
- (10)The boom must be raised in front of crawler rather than the side of crawler.
- (11)The operation of crane must comply with the instructions in Operator's Manual.
- (12)In S-1 boom configuration,main boom can be fitted with tip boom,whose rated load is the same as that on main boom.But the maximum lifting capacity on tip boom can not exceed 7t.
- (13)The rated lifting capacity in the chart, which is obtained from the calculation when the load is suspended,is the reserved allowance for various operating factors such as the influence of wind load,ground gradient. The operating speed or any other condition may impose bad influences on safe operation of the crane.As a result, the crane operator must judge the present conditions and reduce the lifting load and operating speed correspondingly.
- (14)The notes here are also applicable to the following boom configurations.

Lifting Performance

Lifting performance on SF-1/SF-2 boom

unit:t

S-2	40m main boom					
	Fixed jib length (m)					
	6		12		18	
Fixed jib angle Radius(m)	10	30	10	30	10	30
10	22.3	22.2	22.1	21.9	22	21.6
12	17.5	17.4	17.4	17.2	17.2	16.9
14	14	13.9	13.9	13.7	13.7	13.5
16	11.3	11.3	11.2	11.1	11.1	10.9
18	9.4	9.4	9.3	9.2	9.2	9
20	7.9	7.9	7.8	7.7	7.7	7.5
22	7	7	6.9	6.8	6.8	6.7
24	5.9	5.9	5.8	5.8	5.7	5.6
26	5.1	5.1	5	5	4.9	4.8
28	4.3	4.3	4.2	4.2	4.1	4.1
30	3.8	3.8	3.7	3.7	3.6	3.6
32	3.3	3.3	3.2	3.2	3.1	3.1
34	2.6	2.6	2.5	2.5	2.4	2.4
36	2.6	2.5	2.4	2.4	2.3	2.3

unit:t

S-2	43m main boom					
	Fixed jib length (m)					
	6		12		18	
Fixed jib angle Radius(m)	10	30	10	30	10	30
10	21.7	21.6	21.5	21.3	21.4	21
12	17.1	17	17	16.8	16.8	16.5
14	13.7	13.7	13.6	13.4	13.5	13.2
16	11.2	11.2	11.1	11	11	10.8
18	9.2	9.2	9.1	9	9	8.8
20	7.8	7.8	7.7	7.6	7.6	7.5
22	6.8	6.8	6.7	6.6	6.6	6.5
24	5.7	5.7	5.6	5.6	5.5	5.4
26	5	5	4.9	4.9	4.8	4.7
28	4.2	4.2	4.1	4.1	4	4
30	3.5	3.5	3.4	3.4	3.3	3.3
32	3.3	3.2	3.2	3.1	3	3
34	2.7	2.6	2.6	2.5	2.5	2.4
36	2.4	2.3	2.3	2.2	2.2	2.1
38	1.8	1.8	1.7	1.6	1.6	1.5
40	1.6	1.6	1.5	1.4	1.4	1.3

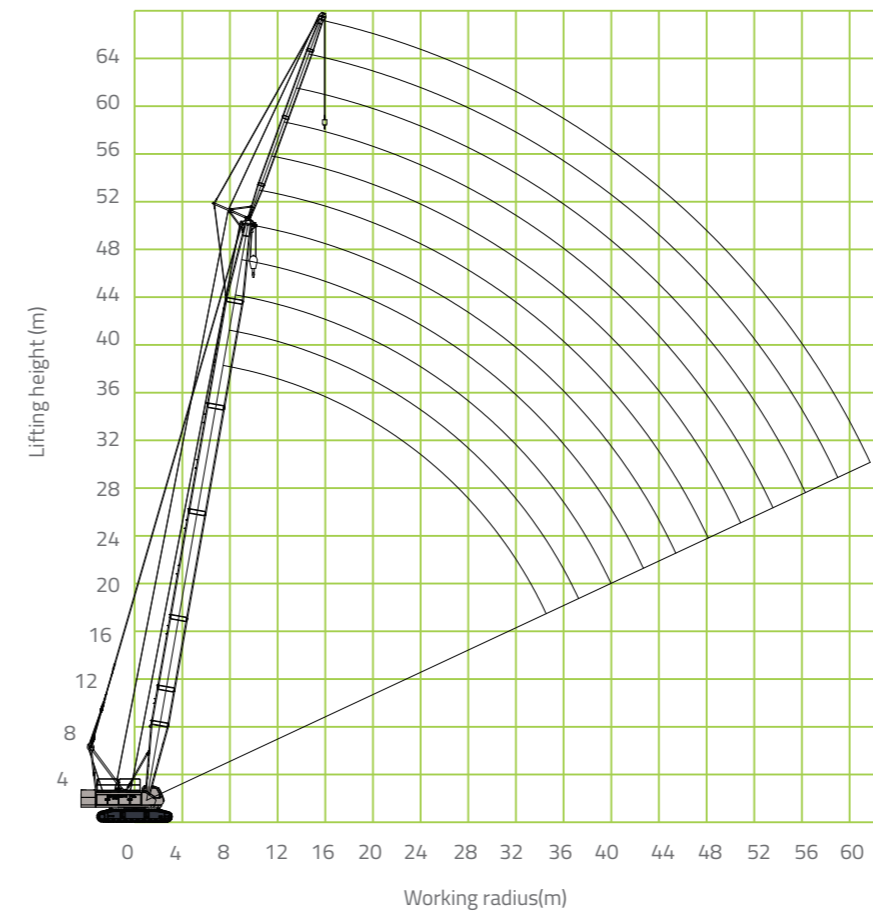
unit:t

S-2	46m main boom					
	Fixed jib length (m)					
	6		12		18	
Fixed jib angle Radius(m)	10	30	10	30	10	30
10	21.1	21	21	20.7	20.8	20.5
12	16.7	16.6	16.6	16.4	16.4	16.1
14	13.5	13.4	13.4	13.2	13.3	13
16	11	11	10.9	10.8	10.8	10.6
18	9	9	8.9	8.8	8.8	8.6
20	7.7	7.7	7.6	7.5	7.5	7.4
22	6.6	6.6	6.5	6.5	6.4	6.3
24	5.6	5.6	5.5	5.5	5.4	5.3
26	5.1	5	4.9	4.9	4.8	4.7
28	4.2	4.1	4.1	4	3.9	3.9
30	3.7	3.6	3.6	3.5	3.5	3.4
32	3.2	3.1	3.1	3	3	2.9
34	2.6	2.5	2.5	2.4	2.4	2.3
36	2.3	2.2	2.2	2.1	2	2
38	1.8	1.8	1.7	1.7	1.6	1.5
40	1.6	1.6	1.5	1.5	1.4	1.4

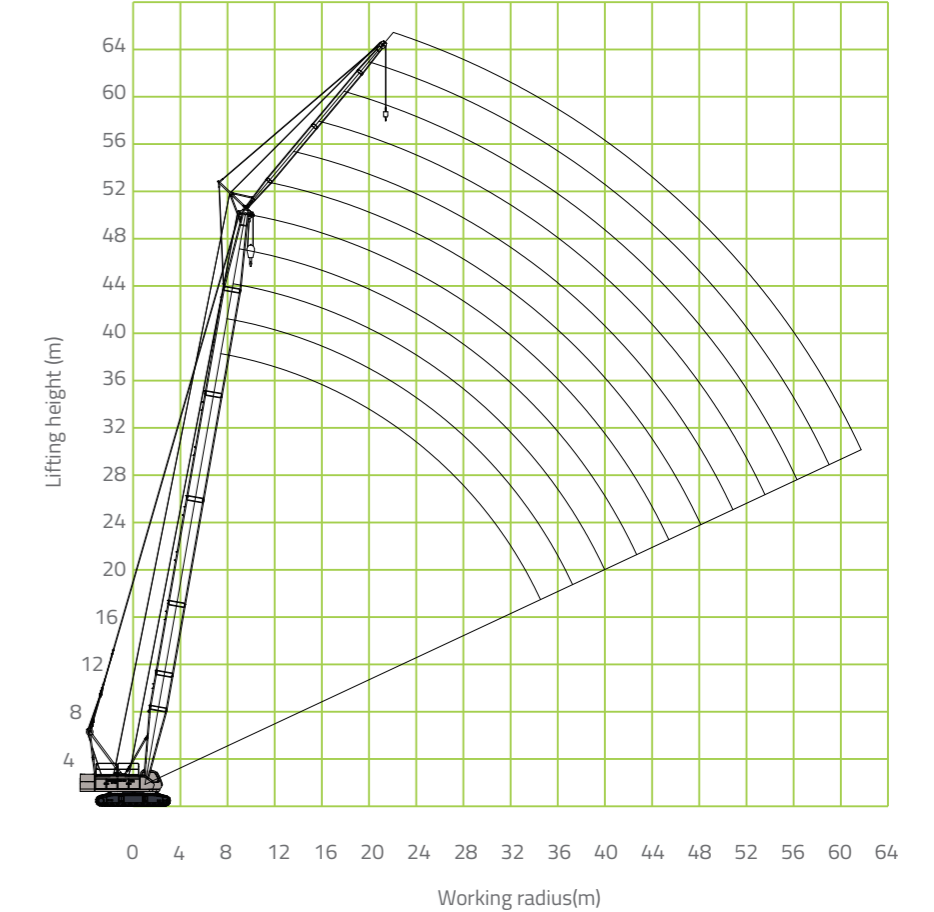
unit:t

S-2	49m main boom					
	Fixed jib length (m)					
	6		12		18	
Fixed jib angle Radius(m)	10	30	10	30	10	30
12	16.3	16.2	16.2	16	16	15.7
14	13.3	13.2	13.2	13	13	12.8
16	10.8	10.8	10.7	10.6	10.6	10.4
18	8.8	8.8	8.7	8.6	8.6	8.4
20	7.5	7.5	7.4	7.3	7.3	7.2
22	6.5	6.5	6.4	6.4	6.3	6.2
24	5.6	5.5	5.4	5.4	5.3	5.2
26	4.8	4.7	4.7	4.6	4.6	4.5
28	4.2	4.1	4.1	4	4	3.9
30	3.7	3.6	3.6	3.5	3.5	3.4
32	3.1	3	3	2.9	2.9	2.8
34	2.6	2.5	2.5	2.4	2.4	2.3
36	2.1	2	2	1.9	1.9	1.8
38	1.8	1.8	1.7	1.7	1.6	1.6
40	1.3	1.3	1.2	1.2	1.1	1.1
42	1.1	1.1	1	1	0.9	0.8

Lifting height on SF-1/SF-2 boom(Fixed jib angle=10°)



Lifting height on SF-1/SF-2 boom(Fixed jib angle=30°)



Lifting Performance

Lifting capacity on SF-1 boom

Main Boom Length(m)	37						40					
	6		12		18		6		12		18	
	Fixed jib angle(°)											
Radius(m)	10	30	10	30	10	30	10	30	10	30	10	30
10	7	6					7					
12	7	6	7				7	6	7			
14	7	6	7		5.5		7	6	7		5.5	
16	7	6	7	6	5.5		7	6	7	6	5.5	
18	7	6	7	6	5.5		7	6	7	6	5.5	
20	7	6	7	6	5.5	4	7	6	7	6	5.5	4
22	7	6	7	6	5.5	4	7	6	7	6	5.5	4
24	7	6	7	6	5.5	4	7	6	7	6	5.5	4
26	6.7	6	6.7	6	5.5	4	6.4	6	6.1	5.4	5.5	4
28	6.1	5.5	6.1	5.5	5.5	3.5	5.5	5.5	5.5	4.8	5	3.7
30	5.4	4.8	5.4	4.8	5	3.5	5.2	5	5	4.2	5	3.7
32	4.9	4.4	4.9	4.4	4	3.3	4.4	4.3	4.3	4	4	3.5
34	4.3	4	4.3	4	4	3.2	4	3.9	3.9	4	4	3.5
36			3.9	3.7	3.7	3.2	3.6	3.5	3.6	3.5	3.8	3.3
38			3.5	3.4	3.5	3.1		3.1	3.2	3	3.2	3.1
40				3.2	3.2	3			2.7	2.7	2.6	2.5
42										2.4	2.5	2.3

Main Boom Length(m)	43						46					
	6		12		18		6		12		18	
	Fixed jib angle(°)											
Radius(m)	10	30	10	30	10	30	10	30	10	30	10	30
12	7						7					
14	7	6	7				7	6	7			
16	7	6	7	6	5.5		7	6	7		5.5	
18	7	6	7	6	5.5		7	6	7	6	5.5	
20	7	6	7	6	5.5	4	7	6	7	6	5.5	
22	7	6	7	6	5.5	4	7	6	7	6	5.5	4
24	7	6	7	6	5.5	4	6.5	6	7	6	5.5	4
26	6.3	5.5	6.3	6	5.5	4	6	5.8	5.9	4.7	5.5	4
28	5.5	4.7	5.5	5.4	5.4	4	5	4.9	5	4.9	5	4
30	4.8	4.3	4.8	4.7	5	4	4.7	4.6	4.6	4.5	4.8	4
32	4.2	4.2	4.2	4.1	4.5	4	4	4.3	4	4	4.4	3.8
34	4	4	4	4	4	3.5	4	3.7	4	3.7	3.8	3.5
36	3.6	3.6	3.7	3.6	3.6	3.5	3.5	3.5	3.5	3.5	3.5	3.3
38	3.3		3.3	3.4	3.4	3.3	3.2	3.2	3.2	3.2	3.2	3.2
40			3.1	3	3.1	3.1	2.9	2.9	2.9	3	3	3
42			2.7	2.7	2.7	2.7		2.6	2.5	2.6	2.5	2.5
44				2.5	2.5	2.5				2.5	2.4	2.4

Main Boom Length(m)	49					
	6		12		18	
	Fixed jib angle(°)					
Radius(m)	7	30	10	30	10	30
12	7					
14	7	6	7			
16	7	6	7			5.5
18	7	6	7	6	5.5	
20	7	6	7	6	5.5	
22	6.5	6	7	6	5.5	4
24	5.7	6	6.5	6	5.5	4
26	5.1	5.5	5.7	5.5	5.5	4
28	4.5	5	5	5	4.9	4
30	4	4.4	4.6	4.4	4.5	4
32	4	4	4	4	4	3.7
34	3.4	4	3.6	3.6	3.5	3.5
36	3	3.3	3.3	3.4	3.2	3.3
38	2.8	3	3	3.2	3	3.2
40	2.5	2.8	2.8	2.8	2.8	3
42		2.5	2.5	2.5	2.5	2.7
44		2.2	2.2	2.3	2.3	2.3
46			1.9	1.9	1.9	1.8

Lifting Performance

Lifting capacity on SF-2 boom

Radius(m)	Main boom length(m)					
	37					
	6		12		18	
	Fixed jib angle(°)					
	10	30	10	30	10	30
10	6					
12	6	5.1	6.2			
14	5.9	5.1	6.1		4.8	
16	5.9	5.1	6.1	5.3	4.8	
18	5.9	5	6.1	5.3	4.8	
20	5.9	5	6.1	5.3	4.7	3.5
22	5.9	5	6.1	5.2	4.7	3.4
24	5.9	5	6.1	5.2	4.7	3.4
26	5.6	5	5.8	5.2	4.7	3.4
28	5	4.4	5.2	4.7	4.7	2.8
30	4.3	3.7	4.5	3.9	4.2	2.8
32	3.8	3.3	3.9	3.5	3.2	2.6
34	3.2	2.9	3.3	3.1	3.2	2.5
36			2.9	2.8	2.9	2.5
38			2.5	2.5	2.7	2.3
40				2.3	2.3	2.2

Radius(m)	Main boom length(m)					
	40					
	6		12		18	
	Fixed jib angle(°)					
	10	30	10	30	10	30
10	6					
12	6	5.1	6.2			
14	5.9	5.1	6.1			
16	5.9	5	6.1	5.3	4.8	
18	5.9	5	6.1	5.3	4.7	
20	5.9	5	6.1	5.2	4.7	3.5
22	5.9	5	6.1	5.2	4.7	3.4
24	5.9	5	6.1	5.2	4.7	3.4
26	5.3	5	5.2	4.6	4.7	3.3
28	4.4	4.4	4.9	3.9	4.2	3
30	4.1	3.9	4	3.3	4.2	3
32	3.3	3.2	3.3	3.1	3.2	2.8
34	2.9	2.8	2.9	3.1	3.1	2.8
36	2.5	2.4	2.6	2.6	2.9	2.5
38		2	2.2	2.1	2.3	2.3
40			1.7	1.8	1.7	1.7
42				1.4	1.6	1.5

Radius(m)	Main boom length(m)					
	43					
	6		12		18	
	Fixed jib angle(°)					
	10	30	10	30	10	30
12	5.9					
14	5.9	5.1	6.1			
16	5.9	5	6.1	5.3	4.7	
18	5.9	5	6.1	5.3	4.7	
20	5.9	5	6.1	5.2	4.7	3.5
22	5.9	5	6.1	5.2	4.7	3.4
24	5.9	5	6	5.2	4.7	3.4
26	5.2	4.4	5.3	5.2	4.7	3.3
28	4.4	3.6	4.5	4.5	4.6	3.3
30	3.7	3.2	3.8	3.8	4.1	3.3
32	3.1	3.1	3.2	3.2	3.6	3.3
34	2.9	2.9	3	3.1	3.1	2.7
36	2.5	2.5	2.7	2.7	2.7	2.7
38	2.2	2.2	2.3	2.5	2.5	2.5
40			2.1	2.1	2.2	2.3
42			1.7	1.7	1.8	1.9
44				1.5	1.6	1.7

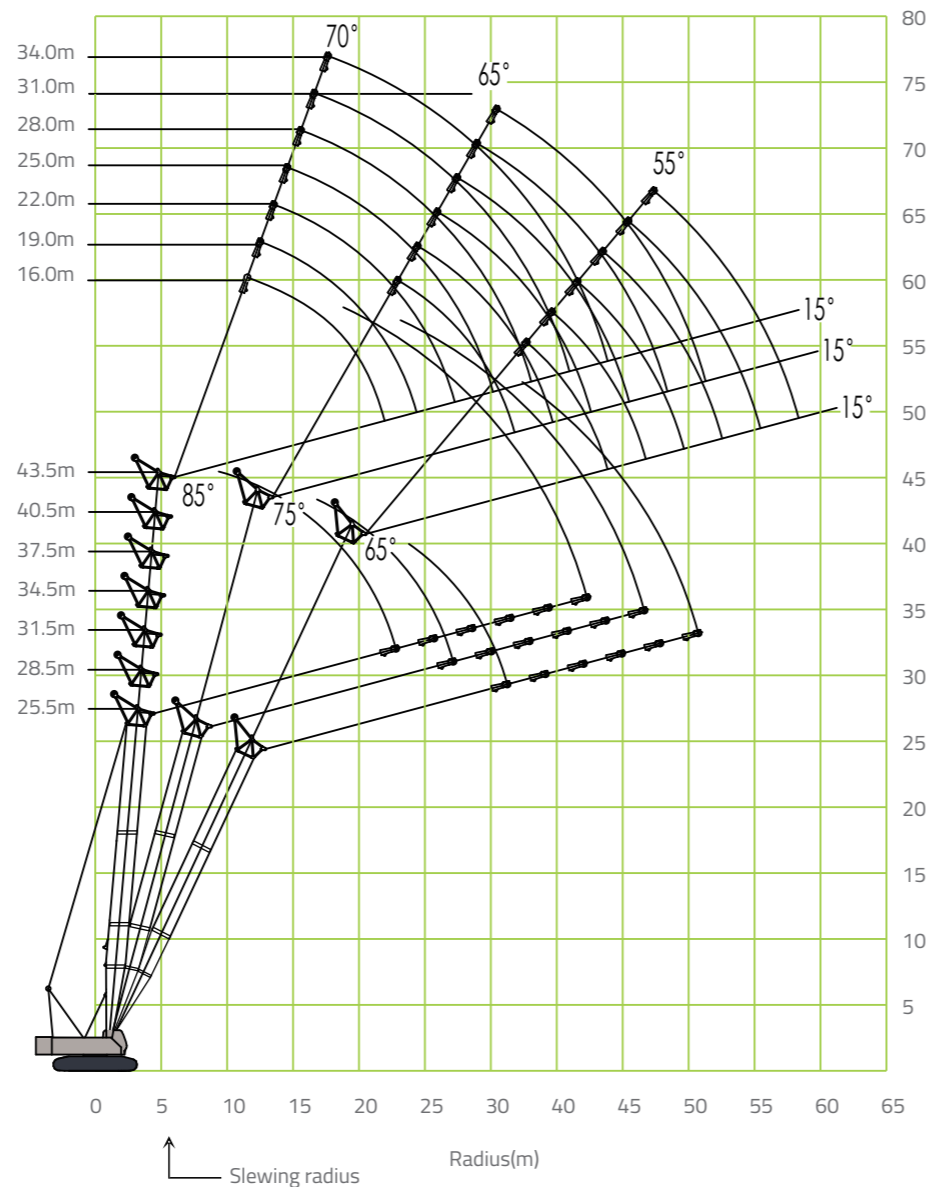
Radius(m)	Main boom length(m)					
	46					
	6		12		18	
	Fixed jib angle(°)					
	10	30	10	30	10	30
12	5.9					
14	5.9	5.1	6.1			
16	5.9	5	6.1			
18	5.9	5	6.1	5.3		
20	5.9	5	6.1	5.2	4.7	
22	5.9	5	6	5.2	4.7	3.4
24	5.4	5	6	5.2	4.7	3.4
26	4.9	4.7	4.9	4.8	4.6	3.3
28	3.9	3.8	4	4	4.1	3.3
30	3.6	3.5	3	3.6	3.9	3.3
32	2.9	3.2	3	3.1	3.5	3.1
34	2.9	2.6	3	2.8	2.9	2.7
36	2.4	2.4	2.5	2.6	2.6	2.5
38	2.1	2.1	2.2	2.3	2.3	2.4
40	1.8	1.8	1.9	2	2.1	2.2
42		1.5	1.5	1.6	1.6	1.7
44			1.5	1.5	1.5	1.6

Lifting Performance On SW Boom

49 m main boom

Radius(m)	Main boom length(m)						
	49						
	Fixed jib length(m)						
	6		12		18		
Fixed jib angle(°)							
10		30		10		30	
12	5.9						
14	5.9	5.1					
16	5.9	5	6.1				
18	5.9	5	6.1	5.3			
20	5.9	5	6	5.2	4.7		
22	5.9	5	6	5.2	4.6	3.4	
24	5.4	5	5.5	5.2	4.6	3.4	
26	4.6	4.4	4.7	4.6	4.6	3.3	
28	4	3.9	4	4.1	4	3.3	
30	3.4	3.3	3.6	3.5	3.6	3.3	
32	2.9	2.9	3	3.1	3.1	3	
34	2.9	2.9	2.6	2.7	2.6	2.7	
36	2.3	2.2	2.3	2.5	2.3	2.5	
38	1.9	1.9	2	2.3	2.1	2.4	
40	1.7	1.7	1.8	1.8	1.9	2.2	
42	1.3	1.4	1.5	1.5	1.6	1.9	
44		1.1	1.2	1.3	1.4	1.5	
46			0.9	0.9	1	1	

unit:t



Lifting Capacity On SW Boom

Main boom :25.5m

Luffing jib length(m)	16			19			22		
Main boom angle(°)	85	75	65	85	75	65	85	75	65
9	15.0			15.0					
10	15.0			15.0			15.0		
12	15.0			15.0			15.0		
14	15.0			15.0			15.0		
16	14.3	13.4		14.3	12.4		14.2		
18	12.4	11.7		12.4	11.6		12.3	11.6	
20	11.7	10.3		11.7	10.2		10.8	10.2	
22		9.2	8.6	9.7	9.1		9.7	9.1	
24		8.7	7.7	8.2	7.7		8.7	8.2	
26			6.9	7.4	6.9	8.3	7.4	6.8	
28				6.7		6.3	6.7	6.3	
30					5.8		6.4	5.8	
32								5.3	
34									5.1

unit:t

Main boom :28.5m

Luffing jib length(m)	16			19			22			25		
Main boom angle(°)	85	75	65	85	75	65	85	75	65	85	75	65
9	15.0											
10	15.0			15.0						15.0		
12	15.0			15.0						15.0		
14	15.0			15.0						15.0		
16	14.3	13.2		14.2			13.9			13.8		
18	12.4	11.4		12.3	11.4		12.3	10.6		12.2		
20	11.6	10.1		10.9	10.1		10.8	9.9		10.8	9.8	
22		9.1	7.9	9.7	8.9		9.7	8.9		9.6	8.8	
24		8.1	7.6	8.1	7.1	8.7	8.1			8.7	7.9	
26			6.8	7.3	6.7	8.3	7.3	6.3	7.8	7.2		
28			6.2	6.9	6.2		6.7	6.1	7.2	6.6	6.1	
30			5.9		5.7		6.1	5.6		6.1	5.6	
32					5.2			5.2		5.6	5.1	
34								4.8		5.3	4.7	
36											4.3	
38												4.2

unit:t

Main boom :31.5m

Luffing jib length(m)	16			19			22			25			28		
Main boom angle(°)	85	75	65	85	75	65	85	75	65	85	75	65	85	75	65
9	15.0														
10	15.0			15.0						15.0					
12	15.0			15.0						15.0				15.0	
14	15.0			15.0						15.0				14.4	
16	14.2	12.1		13.9			13.7			13.6				13.3	
18	12.3	11.3		12.3	11.1		12.1			11.9				11.7	
20	11.6	9.9		10.8	9.9		10.8	9.7		10.7	9.1			10.4	
22		8.9		9.7	8.8		9.7	8.7		9.6	8.6			9.4	8.4
24		7.9	6.9		7.9		8.7	7.8		8.7	7.8			8.6	7.6
26		7.6	6.6		7.2	6.6	8.2	7.2		7.8	7.1			7.8	6.9
28			6.1		6.6	5.9		6.6	5.9	7.2	6.4			7.1	6.4
30			5.6			5.4		5.9	5.4		5.9	5.3		6.6	5.8
32						5.1		5.7	4.9		5.4	4.9		6.3	5.4
34								4.8			5.3	4.6		5.1	4.4
36									4.3			4.2		4.7	4.2
38												3.9			3.8
40												3.8			3.6
42															3.4

unit:t

Main boom :34.5m

Luffing jib length(m)	16			19			22			25			28			31		
Main boom angle(°)	85	75	65	85	75	65	85	75	65	85	75	65	85	75	65	85	75	65
9	15.0																	
10	15.0			15.0						15.0								
12	15.0			15.0						15.0								
14	15.0			15.0						15.3								
16	13.9			13.7						13.2								
18	12.3	10.9		12.1	10.2		11.9			11.7								
20	10.8	9.8		10.8	9.6		10.7	9.4		10.4								
22		8.7		9.7	8.7		9.6	8.4		9.4	8.3							
24		7.8		9.1	7.8		8.7	7.7		8.6	7.6							
26			6.4		7.1		8.2	7.1		7.8	6.9							
28			5.8		6.4	5.8		6.4	5.4	7.1	6.3							
30			5.3		5.3		5.9	5.2		5.8	4.9							
32			5.2		4.8		5.7	4.8		5.3	4.7							
34					4.6			4.4		4.9	4.3							
36								4.1		4.1	4.1							
38								3.9		3.8	3.8							
40										3.6	3.6							
42																		
44																		
46																		

unit:t

Lifting Capacity On SW Boom

unit:t

Main boom :37.5m																					
Luffing jib length(m)	16			19			22			25			28			31			34		
Main boom angle(°)	85	75	65	85	75	65	85	75	65	85	75	65	85	75	65	85	75	65	85	75	65
10	15.0			15.0			15.0														
12	15.0			15.0			15.0						14.9								
14	15.0			15.0			15.0						14.9						12.6		10.8
16	13.7			13.4			13.2						12.9						12.0		10.3
18	12.1	9.9		11.9			11.7						11.4						11.1		9.8
20	10.8	9.4		10.7	9.2		10.4	8.6					10.2						9.8		9.4
22		8.6		9.6	8.3		9.4	8.2					9.3	7.9					8.9		8.7
24		7.7		9.1	7.6		8.6	7.4					8.4	7.2					8.3	7.1	6.6
26		6.9	5.9		6.9		7.8	6.8					7.8	6.6					7.6	6.4	6.3
28			5.7		6.3	5.3		6.3					7.1	6.1					8.1	6.6	6.6
30			5.2		6.1	5.1		5.8	4.8				7.1	5.9					8.9	7.9	7.9
32			4.8			4.7		6.8	5.7				6.4	5.4					8.9	7.9	7.9
34						4.7		5.3	4.6				5.3	4.4					9.8	8.9	8.9
36						4.3		4.3	4.3				4.8	4.1					8.9	8.1	8.1
38						4.2		3.9	3.8				4.4	3.7					8.9	8.1	8.1
40								3.7	3.6				4.2	3.4					8.9	8.1	8.1
42									3.6				4.2	3.4					8.9	8.1	8.1
44									3.3				3.3	3.3					8.9	8.1	8.1
46									3.3				3.1	2.9					8.9	8.1	8.1
48													2.9	2.8					8.9	8.1	8.1
50														2.7					8.9	8.1	8.1
52																			8.9	8.1	8.1

unit:t

Main boom :40.5m																					
Luffing jib length(m)	16			19			22			25			28			31			34		
Main boom angle(°)	85	75	65	85	75	65	85	75	65	85	75	65	85	75	65	85	75	65	85	75	65
10	15.0			15.0			15.0														
12	15.0			15.0			15.0						15.0								
14	15.0			15.0			14.9						14.6						12.6		10.6
16	13.4			13.2			12.9						12.7						12.1		10.3
18	11.9	9.6		11.7			11.4						10.9						10.8		9.9
20	10.7	9.1		10.4	8.4		10.2						9.8						10.8		9.9
22		8.2		9.4	8.1		9.3	7.8					9.1	7.3					9.7		9.4
24		7.4		9.1	7.3		8.4	7.1					8.9	7.3					9.7		9.4
26		6.8			6.7		7.8	6.6					8.1	6.4					9.7		9.4
28		6.6	5.3		6.2			6.6					7.4	6.2					9.7		9.4
30			4.9		5.7	4.8		6.1	5.8				7.4	6.2					9.7		9.4
32			4.6			4.4		5.2	4.3				7.4	6.2					9.7		9.4
34			4.2			4.2		4.9	3.9				7.4	6.2					9.7		9.4
36						3.8		3.7	3.6				7.4	6.2					9.7		9.4
38						3.7		3.6	3.6				7.4	6.2					9.7		9.4
40								3.4	3.4				7.4	6.2					9.7		9.4
42									3.2				7.4	6.2					9.7		9.4
44									2.9				7.4	6.2					9.7		9.4
46													7.4	6.2					9.7		9.4
48													7.4	6.2					9.7		9.4
50													7.4	6.2					9.7		9.4
52													7.4	6.2					9.7		9.4

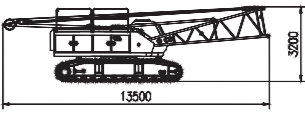
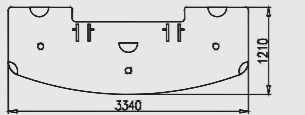
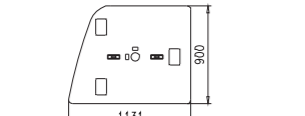
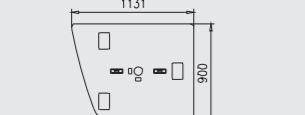
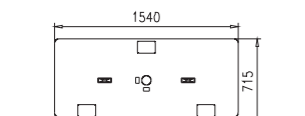
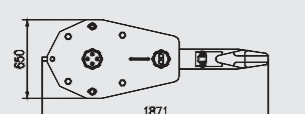
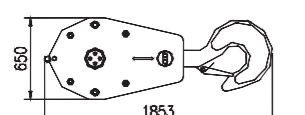
Lifting Capacity On SW Boom

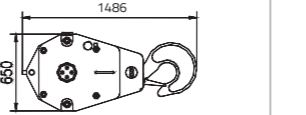
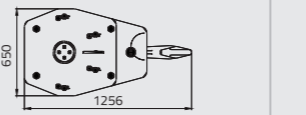
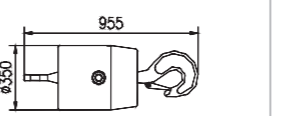
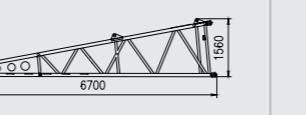
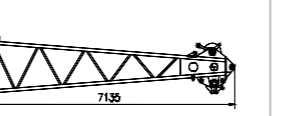
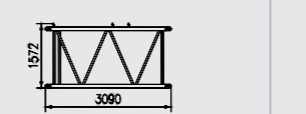
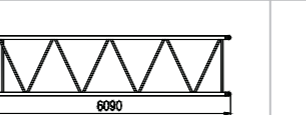
unit:t

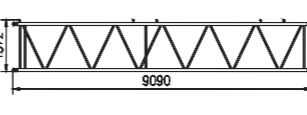
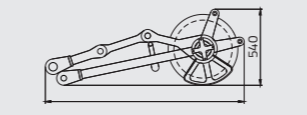
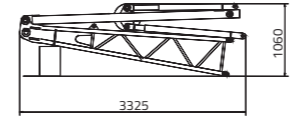
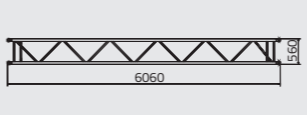
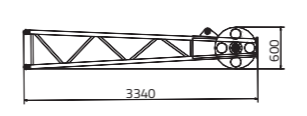
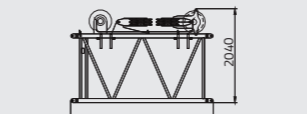
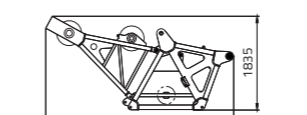
Main boom :43.5m																					
Luffing jib length(m)	16			19			22			25			28			31			34		
Main boom angle(°)	85	75	65	85	75	65	85	75	65	85	75	65	85	75	65	85	75	65	85	75	65
10	15.0			15.0																	
12	15.0			15.0									14.9								
14	15.0			15.0									14.9						12.6		10.8
16	13.7			13.4									12.9						12.0		10.3
18	12.1	9.9		11.9									11.4						11.1		9.8
20	10.8	9.4		10.7	9.2								10.2						9.8		9.4
22		8.6		9.6	8.3								9.3	7.9					8.9		8.7
24		7.7		9.1	7.6								8.4	7.2					8.3	7.1	6.6
26		6.9	5.9		6.9								7.8	6.6					7.6	6.4	6.3
28			5.7		6.3	5.3							7.1	6.1					8.1	6.6	6.6
30			5.2		6.1	5.1							7.1	5.9					8.9	7.9	7.9
32			4.8			4.7							6.4	5.4					8.9	7.9	7.9
34						4.3							5.3	4.4					9.8	8.9	8.9
36						4.2							4.8	4.1					8.9	8.1	8.1
38													4.4	3.7					8.9	8.1	8.1
40													4.2	3.4					8.9	8.1	8.1
42													4.2	3.4					8.9	8.1	8.1
44													3.3	3.3					8.9	8.1	8.1
46													3.3	3.3					8.9	8.1	8.1
48													3.1	2.9					8.9	8.1	8.1
50													2.9	2.8					8.9	8.1	8.1
52														2.7					8.9	8.1	8.1

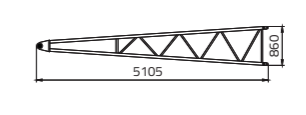
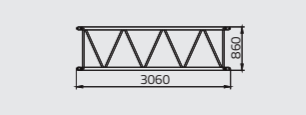
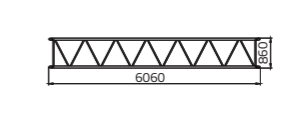
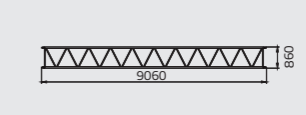
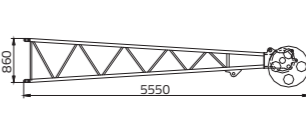
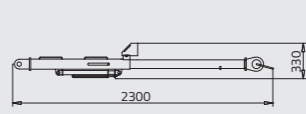
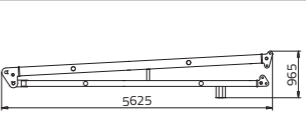
*The lifting capacity charts mentioned above is only for reference. For actual lifting capacity, please see Operator's Manual and the data shown in the load moment limiter.

Transport dimensions and weights of main components

Names of the components	Dimensions(mm)	Weight(t)	Qty.	Remarks(mm)
Basic machine		41.8	1	Width:3400
Counterweight base plate		2.7	1	Height:705
Counterweight plate		3.825	2	Height:620
Counterweight plate		3.825	2	Height:620
Counterweight plate		4.5	2	Height:620
Load hook (80t)		1.25	1	Width:650
Load hook (50t)		0.92	1	Width:582

Names of the components	Dimensions(mm)	Weight(t)	Qty.	Remarks(mm)
Load hook (30t)		0.605	1	Width:504
Load hook (16t)		0.5	1	Width:504
Load hook (6t)		0.264	1	Width:350
Main boom pivot section		0.93	1	Width:1700
Main boom head (with tip boom)		1.195	1	Width:1700
3m main boom intermediate section		0.30	1	Width:1700
6m main boom intermediate section		0.58	1	Width:1700

Names of the components	Dimensions(mm)	Weight(t)	Qty.	Remarks(mm)
9m main boom intermediate section		0.68	4	Width:1700
Tip boom		0.14	1	Width:700
Fixed jib pivot section (with FA-frame front and rear tilting-back supports)		0.70	1	Width:740
6m fixed jib intermediate section		0.17	1	Width:560
Fixed jib head		0.31	1	Width:560
3m main boom extension		0.75t	1	1700mm
Head section		0.97t	1	1700mm

Names of the components	Dimensions(mm)	Weight(t)	Qty.	Remarks(mm)
Luffing jib pivot section		0.36t	1	1700mm
3m luffing jib intermediate section		0.12t	1	1060mm
6m luffing jib intermediate section		0.24t	2	1060mm
9m luffing jib intermediate section		0.35t	1	1060mm
Luffing jib head		0.43t	1	1060mm
Luffing jib tilting-back support		0.09t	2	200mm
WA-frame		1.1t	1	1700mm